

A Revision of the Species of *Hydrangea* (Hydrangeaceae) Described by Siebold and Zuccarini, Part 2

Hideaki Ohba^{1*} and Shinobu Akiyama²

¹Department of Botany, the University Museum, the University of Tokyo,
Hongo 7–3–1, Bunkyo-ku, Tokyo 113–0033, Japan

²Department of Botany, National Museum of Nature and Science,
Amakubo 4–1–1, Tsukuba, Ibaraki 305–0005, Japan

*E-mail: ohba@um.u-tokyo.ac.jp

(Received 6 August 2013; accepted 18 December 2013)

Abstract An enumeration of *Hydrangea* of Japan (part 2) is presented.

Key words: *Hydrangea*, Japanese flora, lectotypification, Siebold collections, Zuccarini.

This is the part 2 treating *Hydrangea* of Japan except the taxa attributing to *H. serrata* (Thunb.) Ser. (cf. Ohba and Akiyama, 2013).

10) ***Hydrangea azisai*** Siebold in Nova Acta Phys.-Med. Acad. Caes. Leop.-Carol. Nat. Cur. 14(2): 689 (1828). Siebold & Zucc., Fl. Jap. 1: 104, t. 51 (1839); in Abh. Math.-Phys. Cl. Königl. Bayer. Akad. Wiss. 4(2): 191 (1845).

Original material: Japonia. Hb. von Siebold (L 0043369) with Siebold's annotation "*Hydrangea azisai*. Sieb." [Category 2] and Zuccarini's annotation "*Hydrangea Azisai*. S. & Z." and note "Exemplar authenticum, ad floram Japon. digerendam quod interviit" [lower branch: Fl. Jap. 1: t. 51] (Fig. 15). Legit in Japonia et Communicavit Siebold anno 1839 (M 0153951), Herbarium Zuccarinii [Category 2b]. In Japonia legit Bürger Communicavit d. Siebold (M 0153952), Herb. Zuccarinii [Category 2b].

Additional specimen: Japonia. Communicat. ex Herb. Lugduno-Batavo (M 0153953). Bürger (M 0153956), determined as *H. belzonii* Siebold & Zucc.

All specimens cited have glabrous leaves, particularly on the midvein on the upper surface and the axils of lateral veinlets on the lower surface.

Hydrangea azisai represents well the normal form of *H. macrophylla* (Thunb.) Ser., now named *f. normalis* (E.H.Wilson) H.Hara. Although Siebold and Zuccarini mentioned that it grew in Japan and China, it is actually indigenous in a narrow range in the central part of Honshu on the Pacific Ocean side from the Boso Peninsula southwestward to the Izu Peninsula through Miura Peninsula, and also on the Izu and Volcano islands. The specimen (L 0043369) has entirely glabrous leaves and inflorescences with sparse hairs.

The specimen (L 0043369) is designated as the lectotype by Hara (1955) (Fig. 15). The specimen bears Siebold's annotation "*Hydrangea azisai*. Sieb." [Category 2] and Zuccarini's annotation "*Hydrangea Azisai*. S. & Z." and also the note "Exemplar authenticum, ad floram Japon. digerendam quod interviit" [Fl. Jap. 1: t. 51].

Siebold and Zuccarini described a variegated form as var. *foliis aureo-variegatis* (Siebold & Zucc., Fl. Jap. 1: 105, 1839). A specimen (Hb. von Siebold, L 0103039), with annotation "*Hydrangea azisai* S. & Z. var. *foliis auro-maculatis*" probably in the hand of Schultes bis, represents it (Fig. 16).

Siebold (1828) recorded "Ajisai," or sometimes as "Azisai," as the Japanese name of this

species, but that name is now applied to *Hydrangea macrophylla* f. *macrophylla*, while “Gaku-ajisai” is used for f. *normalis*.

11) **Hydrangea bracteata** Siebold & Zucc., Fl. Jap. 1: 176, t. 92 (1841); in Abh. Math.-Phys. Cl. Königl. Bayer. Akad. Wiss. 4(2): 192 (1845).

Original material: Japonia. Hb. von Siebold (L 0043367) [Category 5 (*Fl. Jap.* 1: t. 92) (Fig. 17)].

McClintock (1957) selected t. 92 in Siebold and Zuccarini’s *Flora Japonica* as the lectotype, but we found a specimen in L that corresponds well with the illustration of t. 92 in *Flora Japonica*. The illustration of t. 92 is considered to be based on this specimen (L 0043367). We therefore designate this specimen (L 0043367) as the lectotype (Fig. 17). *Hydrangea bracteata* is a synonym of *H. petiolaris* Siebold & Zucc. (Tsuru-ajisai in Japanese).

12) **Hydrangea cordifolia** Siebold & Zucc., Fl. Jap. 1: 113, t. 59. II (1839); in Abh. Math.-Phys. Cl. Königl. Bayer. Akad. Wiss. 4(2): 192 (1845).

Original material: Japonia. Communicavit Bürger, Hb. von Siebold (L 0043365) with Siebold’s annotation “*Hyd. cordifol* and *Hyd. petiolaris*?” [Category 2] (Fig. 18). Legit in Japonia Bürger. Communicavit d. Siebold (M 0153957), Herbarium Zuccarini, with Zuccarini’s annotation “*Hydrangea cordifolia* S & Z” [Category 2]. In Japonia legit Bürger. Communicavit d. Siebold (M 0153958), Herb. Zuccarini [Category 2b]. In Japonia legit Bürger. Communicavit d. Siebold (M 0153959), Herb. Zuccarini [Category 2b]. In Japonia legit Bürger. Communicavit d. Siebold (M 0153960), Herb. Zuccarini [Category 2b].

In *Flora Japonica* Siebold and Zuccarini described three species with climbing stems and deciduous leaves. These three undoubtedly fall within the range of variation of a single species, *H. petiolaris* (Ohba, 2001).

Although McClintock (1957) stated that no type specimen exists, and that the plate in *Flora Japonica* may be considered the type, five specimens cited are considered to be original material. The specimen (L 0043365) with Siebold’s annota-

tion “*Hyd. cordifol* [olia] and *Hyd. petiolaris*?” is designated here as the lectotype (Fig. 18).

13) **Hydrangea hirta** (Thunb.) Siebold & Zucc., Fl. Jap. 1: 117, t. 62 (1839); in Abh. Math.-Phys. Cl. Königl. Bayer. Akad. Wiss. 4(2): 192 (1845).

This combination is based on *Viburnum hirtum* Thunb. (*Fl. Jap.*: 124, 1784), known as Ko-ajisai in Japan.

14) **Hydrangea hortensia** Siebold in Nova Acta Phys.-Med. Acad. Caes. Leop.-Carol. Nat. Cur. 14: 688 (1828).

Original material: Specimens considered to be original material were not found in L or M.

This is believed to be a superfluous name for *Hydrangea hortensis* J.Sm. because Siebold cited this name and also *Hortensia speciosa* Pers. and *H. opuloides* Lam. in synonymy, all of which were published validly before the publication of *H. hortensia* Siebold. The epithet *hortensis* is derived from the generic name proposed by Lamarck.

Although Siebold made valuable comments on ornamental plants introduced from China and cultivated in Japan, such as *Wisteria floribunda*, he possibly thought that *Hydrangea hortensis* and/or *H. otaksa* were also introduced from China. *Hydrangea hortensis* is undoubtedly *Hydrangea macrophylla* (Thunb.) Ser. *Hydrangea macrophylla* is a direct derivative of *H. macrophylla* f. *normalis* native to the Izu Peninsula and adjacent regions and mentioned above under *H. azisai*. The glabrous nature and the size of the flowers and leaves are shared by both *H. macrophylla* and *H. hortensis*. Since the Muromachi Era (1336–1573), at least before Carl Peter Thunberg visited Japan in 1776, *Hydrangea macrophylla* had been cultivated as an ornamental plant not only in eastern Japan but also in western Japan, including Kyoto and Nagasaki, and was possibly carried to China.

15) **Hydrangea involucrata** Siebold in Nova Acta Phys.-Med. Acad. Caes. Leop.-Carol. Nat. Cur. 14: 691 (1828). Siebold & Zucc., Fl. Jap. 1:

118, t. 63, 64 (1839); in Abh. Math.-Phys. Cl. Königl. Bayer. Akad. Wiss. 4(2): 192 (1845).

Original material: Japonia. Hb. von Siebold (L 0043366) with Siebold's annotation "*Hydrangea involucrata*, S." [Category 2] and Japanese name "ギンガサウ [Gingasō in Japanese] [upper branch with double petaled flowers: *Fl. Jap.* 1: t. 63] (Fig. 19). Japonia. Hb. von Siebold, in July to Aug. (L 0101479) with Siebold's annotation "*Hydrangea involucrata*, S." [Category 2] [lower branch with single petaled flowers: *Fl. Jap.* 1: t. 64 branch of right side]. Japonia. Hb. von Siebold (L 0103032) with Siebold's annotation "*H. involucrata*" [Category 2] and note "flor. pleno." [middle branch with double petaled flowers: *Fl. Jap.* 1: t. 64 left-hand branch]. Legit in Japonia et Communicavit Siebold anno 1839 (M 0153961), Herbarium Zuccarini, with Zuccarini's annotation "*Hydrangea involucrata* S. & Z." [Category 2b].

McClintock (1957) wrote that the type was presumably in L but she did not cite it. The specimen (L 0043366) is designated here as the lectotype because it has Siebold's annotation and the lower branch with single petaled flowers appears to be the basis of the drawing of t. 64 [a branch of right side] (Fig. 19).

Although Siebold (1828) distinguished two forms by the color of the corolla, "Ginbaisoo" with lilac colored corolla and "Kinbaisoo" with yellowish (flavescens) corolla, the color is variable and difficult to distinguish clearly.

16) ***Hydrangea otaksa*** Siebold & Zucc., *Fl. Jap.* 1: 105, t. 52 (1839); in Abh. Math.-Phys. Cl. Königl. Bayer. Akad. Wiss. 4(2): 192 (1845).

Original material: Japonia: Hb. Siebold (L 0103146) with Zuccarini's annotation "*Hydrangea Otaksa* S. & Z. flor. japon. t. 52" [Category 2] (Fig. 20). Japonia. Hb. Siebold, in July (L 0328086) with Siebold's annotation "*Hydrangea Belzonii*, *Sonogi*, S." [Category 2]. Legit in Japonia Bürger. Communicavit d. Siebold (M 0153965), Herbarium Zuccarini, with Zuccarini's annotation "*Hydrangea Otaksa* S & Z" [Category 2]. In Japonia legit Bürger. Communicavit d. Siebold (M 0153966),

Herb. Zuccarini [Category 2b].

Additional specimen: Japonia. Textor s.n. (L 0421816) (Fig. 21).

The left hand branch of Textor s.n. (L 0421816) has the inflorescence with many normal flowers, and widely elliptic leaves at the second and third nodes below the inflorescence (Fig. 21). The shape of the leaves differs from all other specimens (i.e. obovate or oblong or oblong-obovate). The branch indicates derivation of the hortensia type inflorescence from *Hydrangea macrophylla* f. *normalis*.

Hydrangea otaksa is close to typical *H. macrophylla*, but the former differs in having semi-globose inflorescences consisting mostly of ornamental flowers and thick herbaceous leaves with short acuminate or cuspidate apex and short petiole. Taxonomically *H. otaksa* is regarded as a synonym of *H. macrophylla* but horticulturally it is recognized as a distinct cultivar with the name *H. macrophylla* 'Otaksa' because of its unique semi-globose inflorescence. The specific epithet, *otaksa*, is derived from the name of Siebold's wife, Kusumoto Taki. The word "*Sonogi*" written by Siebold on the specimen (L 0328086) is her alternative name as musician or dancer and makes clear his dedication to her.

The specimen (L 0103146) with Zuccarini's annotation "*Hydrangea Otaksa* S. & Z. flor. japon. t. 52," is designated here as the lectotype (Fig. 20).

17) ***Hydrangea paniculata*** Siebold in Nova Acta Phys.-Med. Acad. Caes. Leop.-Carol. Nat. Cur. 14(2): 691 (1828). Siebold & Zucc., *Fl. Jap.* 1: 115, t. 61 (1839); in Abh. Math.-Phys. Cl. Königl. Bayer. Akad. Wiss. 4(2): 192 (1845).

Original material: Japonia. Hb. von Siebold (L 0043375) with Siebold's annotation "*Hydrangea paniculata* S." [Category 2] and Zuccarini's annotation "*Hydrangea paniculata* S. & Z." (Fig. 22). Legit Bürger in Japonia. Communicavit d. Siebold (M 0153968), Herbarium Zuccarini, with Zuccarini's annotation "*Hydrangea paniculata* S. & Z." [Category 2b]. In Japonia legit Bürger. Communicavit d. Siebold (M 0153969), Herb. Zuccarini [Category 2b].

This species, known as Nori-utsugi or Norinoki in Japanese, is widely distributed throughout Japan. Siebold and Zuccarini (1839) illustrated it well, with fine dissections of the flower and fruit with seed. The specimen (L 0043375) is designated here as the lectotype (Fig. 22).

18) **Hydrangea petiolaris** Siebold & Zucc., Fl. Jap. 1: 108, t. 54 (1839); in Abh. Math.-Phys. Cl. Königl. Bayer. Akad. Wiss. 4(2): 192 (1845).

Original material: Japonia. Hb. von Siebold, in July (L 0043364) with Siebold's annotation "*Hydrangea Jamademari*, S." [Category 3] and Zuccarini's annotation "*Hydrangea petiolaris* S. & Z." [Category 2] (Fig. 23).

Additional specimens: Japonia. Bürger (L 0103029, 0103028). In declitate montis Fuzi ins. Nippon, Pierot 590 (L 0103027) as *H. cordifolia*.

The original material corresponds well with the illustration in t. 54 in *Flora Japonica* (1839) and is designated here as the lectotype (Fig. 23). Siebold and Zuccarini (1839) cited "Jama demari" as the Japanese name.

Hydrangea petiolaris has wide range of variations, particularly in the shape of leaves. Among three names proposed by Siebold and Zuccarini for this species, *H. petiolaris* (Fig. 23) represents an extraordinary and rare form with extremely long petiole. *Hydrangea bracteata* (Fig. 17) and *H. cordifolia* (Fig. 18) are typical and common forms throughout the range.

19) **Hydrangea virens** (Thunb.) Siebold in Nova Acta Phys.-Med. Acad. Caes. Leop.-Carol. Nat. Cur. 14(2): 690 (1828). Siebold & Zucc., Fl. Jap. 1: 114, t. 60 (1839); in Abh. Math.-Phys. Cl. Königl. Bayer. Akad. Wiss. 4(2): 192 (1845).

Representative specimens: Japonia. von Siebold, legit Ito Keiske ex Owari (L 0103066)*. Hb. von Siebold (L 0103067) with Siebold's annotations "*Viburnum virens*, Th... *Hydrangea virens*, Sieb." and "*Hydrangea viridis*, Sieb., *Viburnum*, Th." and Japanese names "ヤマトーシン [Yama-tōshin]" and "イヨーラクツ、ジ [Iyōraku-tsutsuji]" (Fig. 24). Bürger (L 0103072, 0103073, 0103076) with Bürger's annotation

"*Hydrangea virens*, Sieb." Hb. Bürger (L 0103074) with Bürger's annotation "*Hydrangea virens*, Sieb." Hb. Bürger (L 0103075). Maximowicz [ex Bürger] (L 0103078) with Bürger's annotation "*Hydrangea virens*, Sieb." In Volcano Wunzen. Hb. von Siebold (L 0103069)* with ?Siebold's annotation "*Hortentia virens*, S." and a Japanese name "ヤマトーシン [Yama-tōshin]" (Fig. 25). Hb. von Siebold (L 0103071) with Siebold's annotation "*Hydrangea virens*, S." and "*Viburnum virens*, Th" and note "flos. Majo 1829." Hb. von Siebold (L 0103070). In monte ignivomo Wunzen ins. Kiu Siu, Pierot no. 589 (L 0103077, 0103079). Textor s.n. (L 0421792) with note "花三月 [flowers in March by the lunar calendar]." Textor s.n. (L 0421793, 0421794). Legit Bürger [or Siebold] in Japonia. Communicavit d. Siebold (M 0153971, 0153972), Herbarium Zuccarini, with Zuccarini's annotation "*Hydrangea virens* S. & Z." Japonia. Bürger (M 0153973), Herb. Zuccarini, with Miquel's annotation as *Hydrangea virens* Siebold.

Hydrangea virens is based on *Viburnum virens* Thunb. [in Murray, Syst. Veg. ed. 14: 294 (1874); Fl. Jap.: 123 (1874)]. Based on Thunberg collection from Japan, Linnaeus f. published *Viburnum scandens* in 1781, while Thunberg (1784) later described *V. virens*. The type of *Hydrangea virens* (\equiv *Viburnum virens*) is undoubtedly *H. scandens* (L.f.) Ser. The Japanese names Gaku-utsugi and Konteri-gi, and Jama-dōsin [Yama-tōshin] and Kana-utsuki, were recorded by Siebold and Zuccarini and are still used locally.

The specimens cited, except the two with an asterisk, are *H. luteovenosa* Koidz. not *H. scandens* (L.f.) Ser. The illustration, t. 60, under *H. virens* in *Flora Japonica* (1839) is also referred to *H. luteovenosa*. *Hydrangea luteovenosa* is distinguished from *H. scandens* in having small narrowly oblong to narrowly elliptic or narrowly oblanceolate leaves 2.5–3 (–3.5) cm long, with a yellowish white band mainly along the midvein on the upper surface. The two specimens with an asterisk consist of *H. luteovenosa* and *H. scandens*. These specimens indicate that Siebold (1828) and Siebold and Zuccarini (1839) were not aware

of differences between the two species.

An enumeration of *Hydrangea* of Japan (part 2)

[Additional synonyms see Ohba (2001)]

2. *Hydrangea petiolaris* Siebold & Zucc., Fl. Jap. 1: 108, t. 54 (1839); in Abh. Math.-Phys. Cl. Königl. Bayer. Akad. Wiss. 4(2): 192 (1845). Lectotype (designated here): Japonia. Herb. Siebold (L 0043364).

H. bracteata Siebold & Zucc., Fl. Jap. 1: 176, t. 92 (1841); in Abh. Math.-Phys. Cl. Königl. Bayer. Akad. Wiss. 4(2): 192 (1845). Lectotype (designated here): Japonia. Herb. Siebold (L 0043367).

Hydrangea cordifolia Siebold & Zucc., Fl. Jap. 1: 113, t. 59. II (1839); in Abh. Math.-Phys. Cl. Königl. Bayer. Akad. Wiss. 4(2): 192 (1845). Lectotype (designated here): Japonia. Herb. Siebold (L 0043365).

3. *Hydrangea sikokiana* Maxim. in Bull. Acad. Imp. Sci. St.-Petersbourg 31: 42 (1887). Type: Nippon australi: prov. Kii (ex adverso insulae Sikoku, [Y.] Tanaka 475 (LE)).

4. *Hydrangea involucrata* Siebold in Nova Acta Phys.-Med. Acad. Caes. Leop.-Carol. Nat. Cur. 14: 691 (1828). Siebold & Zucc., Fl. Jap. 1: 118, t. 63, 64 (1839); in Abh. Math.-Phys. Cl. Königl. Bayer. Akad. Wiss. 4(2): 192 (1845). Lectotype (designated here): Japonia. Siebold (L 0043366).

4a. var. *involucrata*

4b. var. *idzuensis* Hayashi in J. Geobot. (Kanazawa) 11: 117 (1963); in Bull. Gov. Forest Exp. Sta. no. 170: 80 (1964). Type: [Japan] Hondo, Prov. Idzu, Kitō. Yasaka Hayashi on 20 Aug. 1950 (TNS).

4c. var. *tokarensis* M.Hotta & T.Shiuchi in J. Jap. Bot. 71: 184 (1996). Type: [Japan] Kagoshima Pref., Kuchinoshima Isl. T. Shiuchi no. 5630 (KAGS, TI-iso).

5. *Hydrangea paniculata* Siebold in Nova Acta Phys.-Med. Acad. Caes. Leop.-Carol. Nat. Cur. 14(2): 691 (1828). Siebold & Zucc., Fl. Jap. 1: 115, t. 61 (1839); in Abh. Math.-Phys. Cl.

Königl. Bayer. Akad. Wiss. 4(2): 192 (1845). Lectotype (designated here): Japonia. Herb. Siebold (L 0043375).

6. *Hydrangea macrophylla* (Thunb.) Ser. in DC., Prodr. 4: 15 (1830). Ohba in Iwatsuki *et al.* (eds.), Flora of Japan 2b: 87 (2001).

Viburnum macrophyllum Thunb. in Murray, Syst. Veg. ed. 14, 295 (May-June 1784); Fl. Jap. 125 (August 1784). Lectotype (designated here): Thunberg β (UPS) [see Hara (1953 (fig. 30) and 1955)].

6a. f. *macrophylla*: Japanese name: Ajisai.

H. hortensia Siebold in Nova Acta Phys.-Med. Acad. Caes. Leop.-Carol. Nat. Cur. 14: 688 (1828), a superfluous name for *Hydrangea hortensis* J. Sm. [Icones Pietae Plantarum Rariorum, 12, t. 12 (1792)].

H. otaksa Siebold & Zucc., Fl. Jap. 1: 105, t. 52 (1839); in Abh. Math.-Phys. Cl. Königl. Bayer. Akad. Wiss. 4(2): 192 (1845). Lectotype (designated here): Japonia. Herb. Siebold (L 0103146).

6b. f. *normalis* (E.H.Wilson) H.Hara in J. Jap. Bot. 30: 277 (1955).

H. macrophylla (Thunb.) Ser. var. *normalis* E.H.Wilson in J. Arnold Arbor. 4: 234 (1923). Type: Japan. Suzuki in July 1917 (A).

H. azisai Siebold in Nova Acta Phys.-Med. Acad. Caes. Leop.-Carol. Nat. Cur. 14(2): 689 (1829). Siebold & Zucc., Fl. Jap. 1: 104, t. 51 (1839); in Abh. Math.-Phys. Cl. Königl. Bayer. Akad. Wiss. 4(2): 191 (1845). Lectotype (Hara 1955): Japonia. Herb. Siebold (L 0043369).

H. maritima Haworth-Booth, The *Hydrangea*, 38 (1950), an illegitimate new name for *H. macrophylla* var. *normalis* E.H.Wilson.

H. macrophylla (Thunb.) Ser. var. *hattoriana* Kitam., Acta Phytotax. Geobot. 26: 5 (1974). Lectotype (designated here): Japan. Island Kitaiwojima (J. Toyoshima, KYO).

7. *Hydrangea hirta* (Thunb.) Siebold & Zucc., Fl. Jap. 1: 117, t. 62 (1839); & in Abh. Math.-Phys. Cl. Königl. Bayer. Akad. Wiss. 4(2): 192 (1845).

Viburnum hirtum Thunb., Fl. Jap.: 124 (1784). Type: Thunberg (UPS). Japanese name: Ko-ajisai.

8. *Hydrangea liukiensis* Nakai in Bot. Mag.

(Tokyo) 25: 63 (1911). Type: [Ryukyu] In insula Okinawa, S. Tanaka [no. 1187] (TI). Japanese name: Ryūkyū-konterigi.

9. *Hydrangea scandens* (L.f.) Ser. in DC., Prodr. 4: 15 (1830). Japanese name: Gaku-utsugi.

Viburnum scandens L.f., Suppl. 184 (1781). Type: [Japonia] Thunberg labeled *Viburnum scandens* (LINN-J. E. Smith collection).

V. virens Thunb. in Murray, Syst. Veg. ed. 14, 294 (1874); Fl. Jap. 123 (1784), nom. superfl. Type: the type of *Viburnum scandens* L.f.

H. virens (Thunb.) Siebold in Nova Acta Phys.-Med. Acad. Caes. Leop.-Carol. Nat. Cur. 14(2): 690 (1828). Siebold & Zucc., Fl. Jap. 1: 114, t. 60 (1839); in Abh. Math.-Phys. Cl. Königl. Bayer. Akad. Wiss. 4(2): 192 (1845), nom. illegit.

10. *Hydrangea luteovenosa* Koidz. in Bot. Mag. (Tokyo) 39: 4 (1925). Lectotype (designated here): [Japan] Prov. Suwo, Yamaguchi [Kojodake]. J. Nikai no. 2979 (TI). Japanese name: Ko-gaku-utsugi.

Hydrangea virens (Thunb.) Siebold in Nova Acta Phys.-Med. Acad. Caes. Leop.-Carol. Nat. Cur. 14(2): 690 (1829), pro parte.

11. *Hydrangea kawageana* Koidz. in Bot. Mag. (Tokyo) 32: 138 (1918). Lectotype (Ohba and Akiyama 1990): [Japan] Kiusiu, insl. Nakanoshima. S. Kawageo no. 60 (TI).

11a. var. *kawageana*: Japanese name: Tokara-ajisai.

11b. var. *grosseserrata* (Engl.) Hatus. in J. Jap. Bot. 26: 372 (1951).

Hydrangea grosseserrata Engl. in Pfl.-fam., ed. 2, 18a: 204 (1930). Type: [Japan] Ins. Yakushima. Faurie, no. 3934 (B; G-iso). Japanese name: Yakushima-ajisai, Yakushima-konterigi.

12. *Hydrangea chinensis* Maxim. in Mém. Acad. Imp. Sci. Saint. Pétersbourg 10(16): 7 (1867). Lectotype (McClintock, 1957): [Taiwan] Tamsuy Oldham no. 110 (NY). Japanese name: Kara-konterigi.

12a. var. *koidzumiana* H. Ohba & S. Akiyama in Iwatsuki *et al.* (eds.), Fl. Jap. 2b: 93 (2001). Type: [Japan] Ryukyu, Iriomote-jima. T. Yahara,

S. Akiyama & H. Nagamasu no. 873002 (TI). Japanese name: Yaeyama-konterigi, Shima-konterigi.

Acknowledgments

We greatly appreciate Dr. David E. Boufford's, Harvard University Herbaria, critical reading of the manuscript. We express our appreciation to the directors of the herbaria mentioned in the paper for permitting us to study their valuable collections. This study was supported by a Grant-in-Aid for Scientific Research from the Japan Society for the Promotion of Science (no. 24405014 to H.O.), and the Toshiba International Foundation (Support for Research to Promote Understanding of Japan in 2008–2011).

References

- Hara, H. 1955. Critical notes on some type specimens of East-Asiatic plants in foreign herbaria (5). Journal of Japanese Botany 30: 271–278.
- McClintock, E. 1957. A monograph of the genus *Hydrangea*. Proceedings of the California Academy of Sciences 29: 147–256.
- Ohba, H. 2001. *Hydrangea*. In: Iwatsuki, K., Boufford, D. E. and H. Ohba (eds.), Flora of Japan, 2b: 84–94, Kodansha, Tokyo.
- Ohba, H. and S. Akiyama. 2013. A revision of the species of *Hydrangea* (Hydrangeaceae) described by Siebold and Zuccarini, part 1. Bulletin of the National Museum of Nature and Science, Series B 39: 173–194.
- Siebold, P. F. 1828. Synopsis *Hydrangeae* generis specierum Japonicarum. Nova Acta Physico-Medica Academiae Caesareae Leopoldino-Carolinae Naturae Curiosorum 14: 686–692.
- Siebold, P. F. and J. G. Zuccarini. 1835–1841. Flora Japonica, vol. 1 (*Hydrangea*, pp. 101–119 and 172 in 1839 and 1841).

[Correction]

We selected the lectotypes of *Hydrangea acuminata*, *H. acuminata* var. *buergeri* (\equiv *H. buergeri*), *H. cuspidata*, and *H. serrata* in Bull. Natl. Mus. Nat. Sci., Ser. B, 39, pp. 173–194 (2013), however the lectotypification was already done by Hara in J. Jap. Bot. 36, pp. 271–278 (1955).



Fig. 15. Lectotype of *Hydrangea azisai* Siebold. Hb. von Siebold (L 0043369).

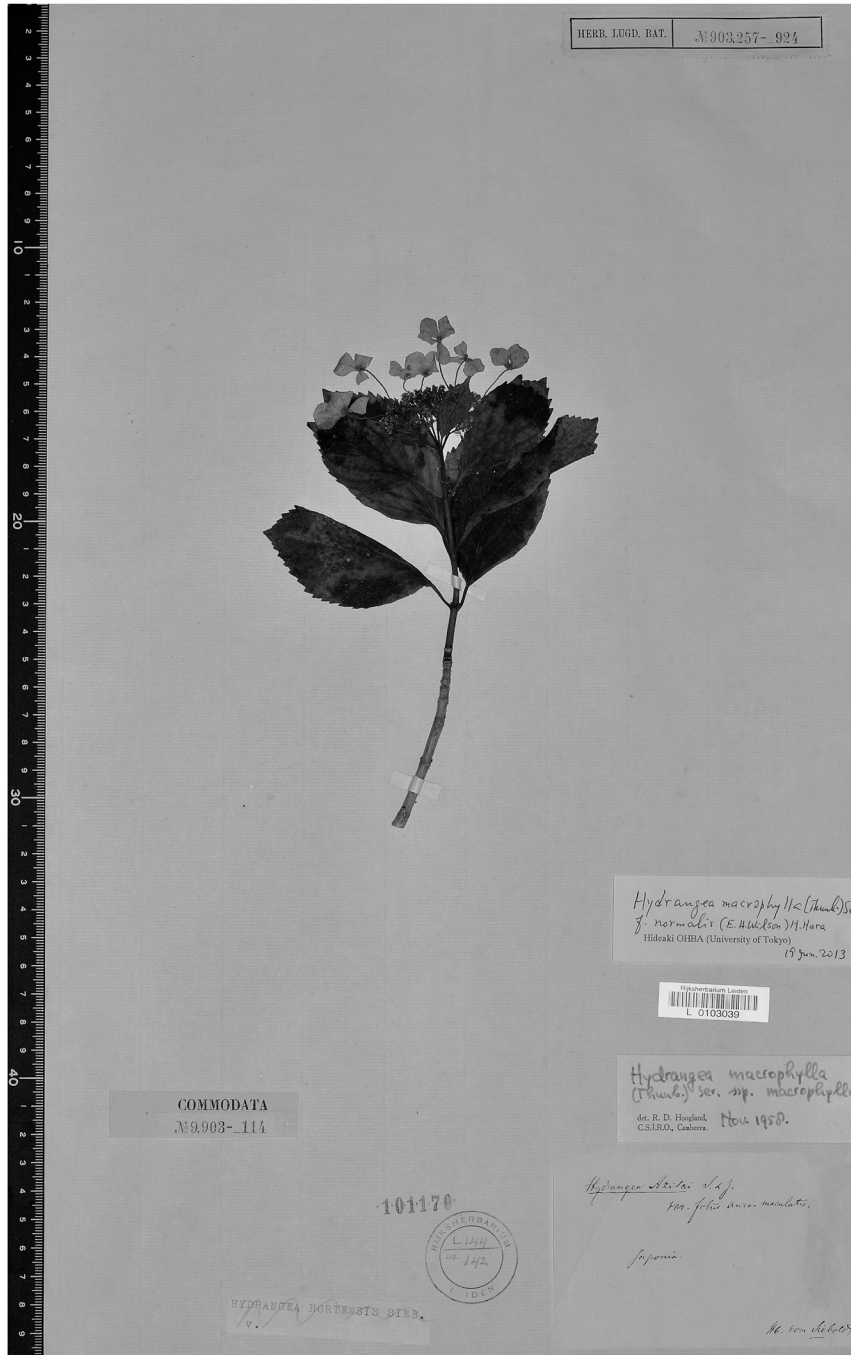


Fig. 16. *Hydrangea azisai* Siebold var. *foliis aureo-variegatis* Siebold & Zucc. Hb. von Siebold (L 0103039).



Fig. 17. Lectotype of *Hydrangea bracteata* Siebold & Zucc. Hb. von Siebold (L 0043367).

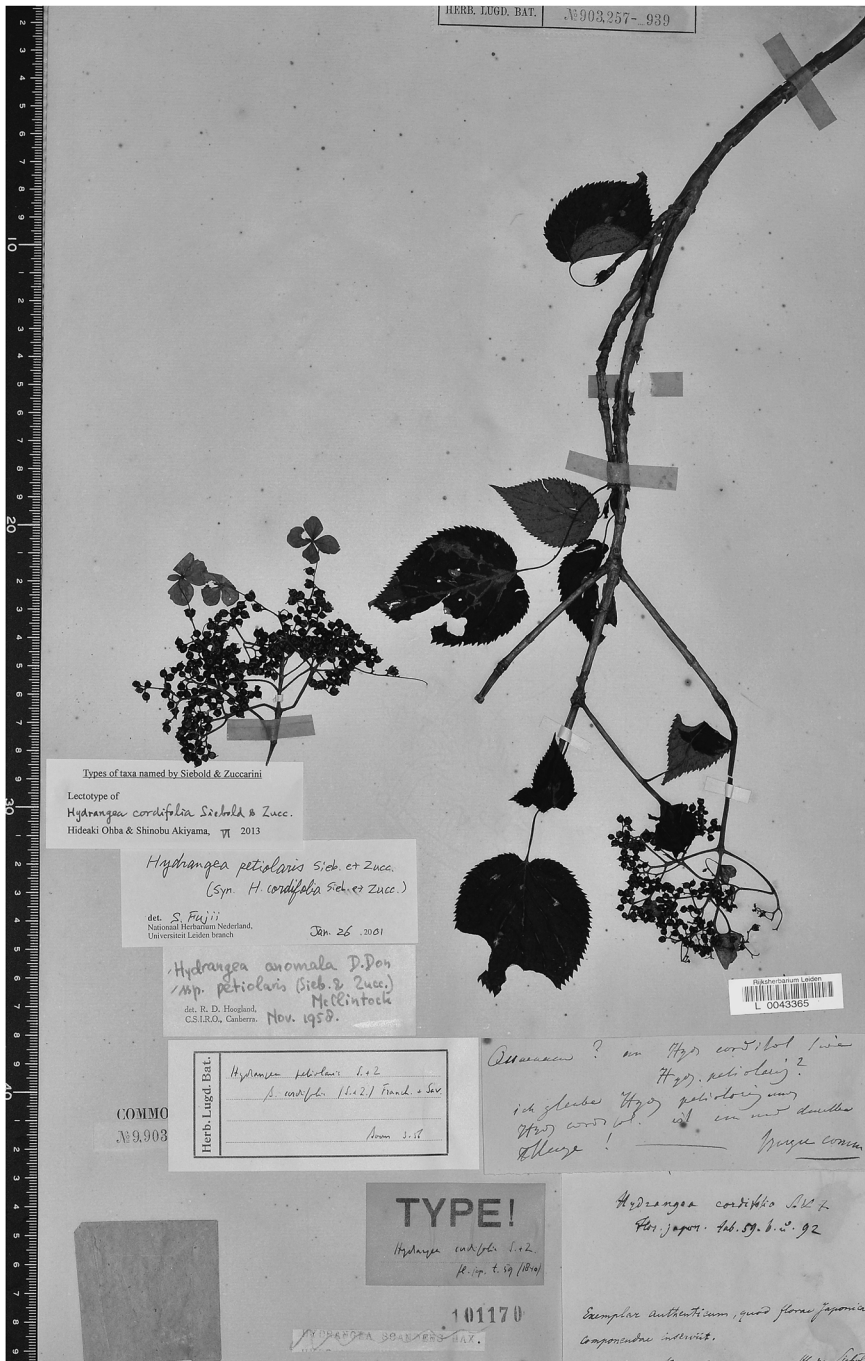


Fig. 18. Lectotype of *Hydrangea cordifolia* Siebold & Zucc. Communicavit Bürger, Hb. von Siebold (L 0043365).

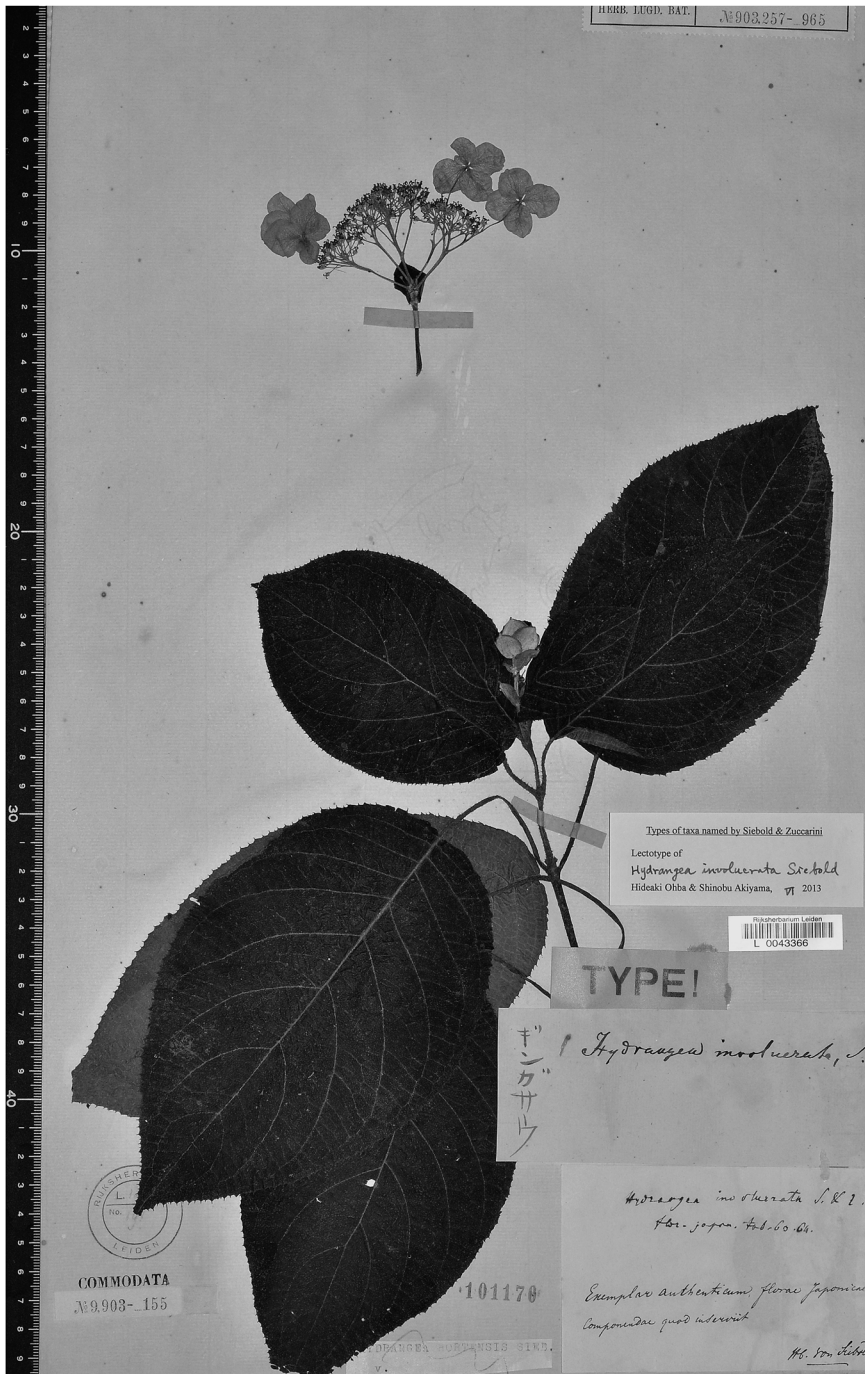


Fig. 19. Lectotype of *Hydrangea involucrata* Siebold. Hb. von Siebold (L 0043366).

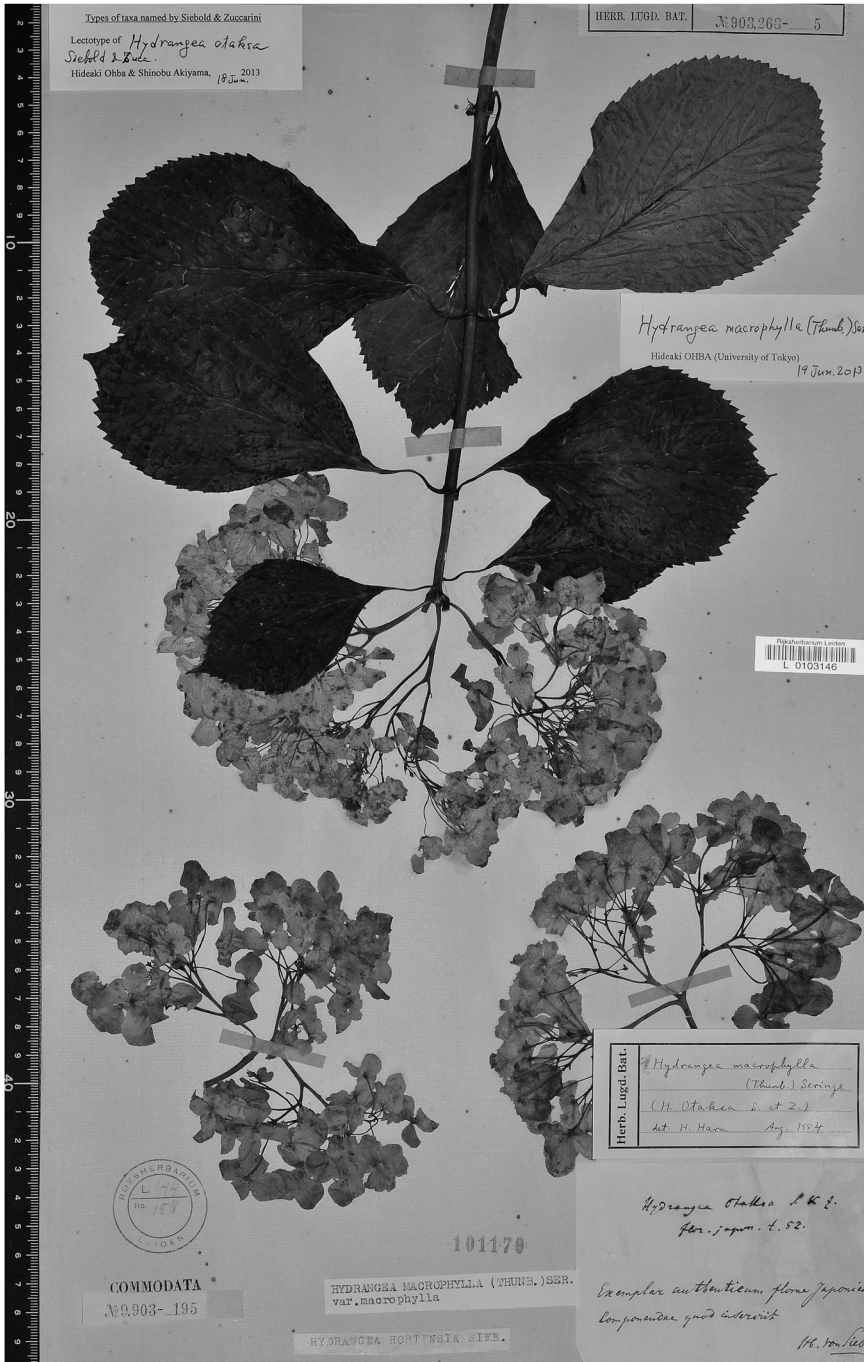


Fig. 20. Lectotype of *Hydrangea otaksa* Siebold & Zucc. Hb. Siebold (L 0103146).



Fig. 21. *Hydrangea otaksa* Siebold & Zucc. Textor (L 0421816).



Fig. 22. Lectotype of *Hydrangea paniculata* Siebold. Hb. von Siebold (L 0043375).

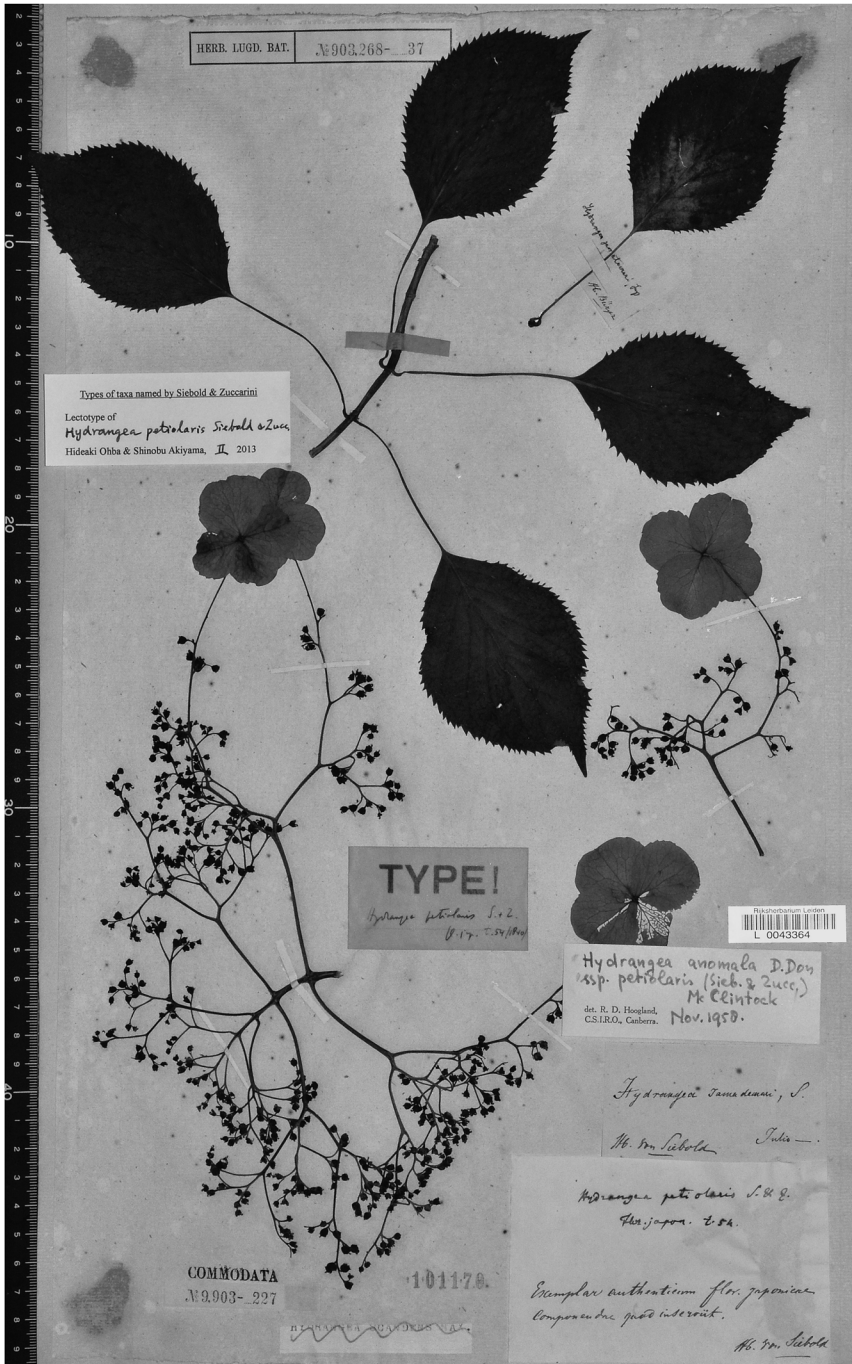


Fig. 23. Lectotype of *Hydrangea petiolaris* Siebold & Zucc. Hb. von Siebold, in July (L 0043364).

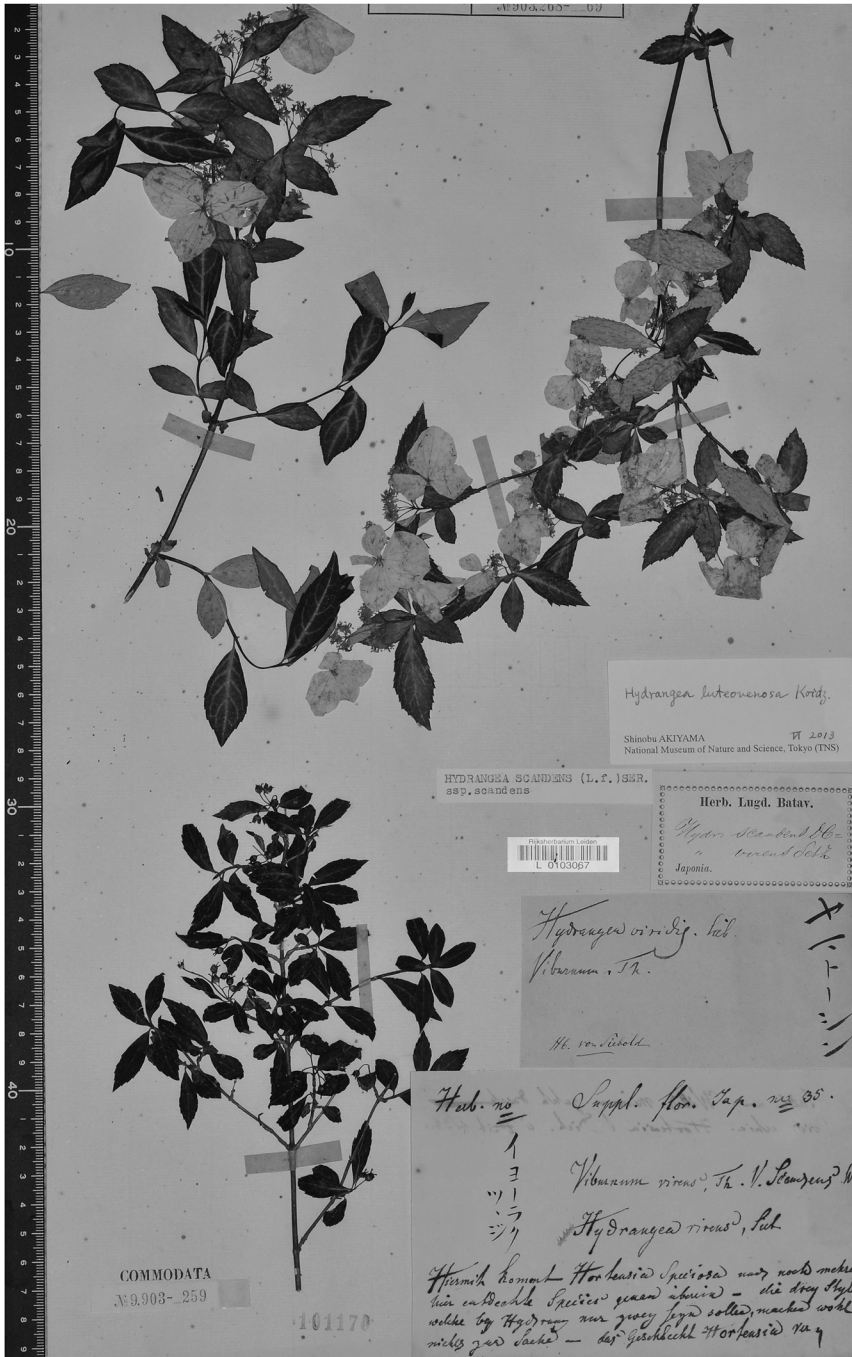


Fig. 24. *Hydrangea luteovenosa* Koidz. An authentic specimen of *H. virens* (Thunb.) Siebold (L 0103067).



Fig. 25. *Hydrangea scandens* (L.f.) Ser. [upper] and *H. luteovenosa* Koidz. [middle and lower]. An authentic specimen of *H. virens* (Thunb.) Siebold (L 0103069).