

Help save the narrow-leaved plectranthus

Scientific name: *Plectranthus allopectus*

Conservation status in NSW: Endangered

Commonwealth status: N/A

Species profile:

<http://www.environment.nsw.gov.au/threatenedspeciesapp/profile.aspx?id=10637>

Saving our Species aims to conserve as many threatened species as possible. This conservation project aims to conserve the narrow-leaved plectranthus in the long-term. The project was developed by experts who identified the minimum number of necessary management sites and conservation actions required to conserve the species.



Three sites have been identified in NSW (ordered north to south). They are:

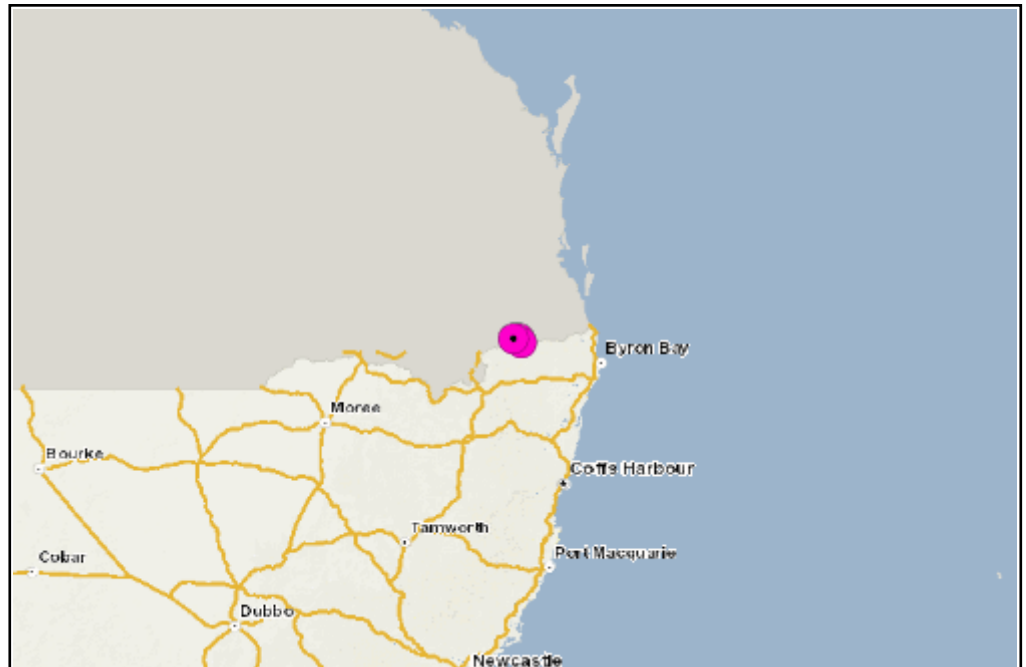
- Mt Clunie National Park in Tenterfield LGA
- Koreelah National Park in Tenterfield LGA
- Little Plain in Tenterfield LGA

More information about each site is provided on the following pages.

All conservation work being undertaken to conserve the narrow-leaved plectranthus around the state is vital to its recovery. If you are working on one of the sites identified in this conservation project, or on a site elsewhere, please contact us at www.environment.nsw.gov.au/savingourspecies/contactus.htm

Map of narrow-leaved plectranthus key management sites

Legend	
	Key Management Site
	Additional Management Site



Site 1: Mt Clunie National Park

Boundary of Mt Clunie National Park.

Total site area (ha): 1,429.00



LGA: Tenterfield

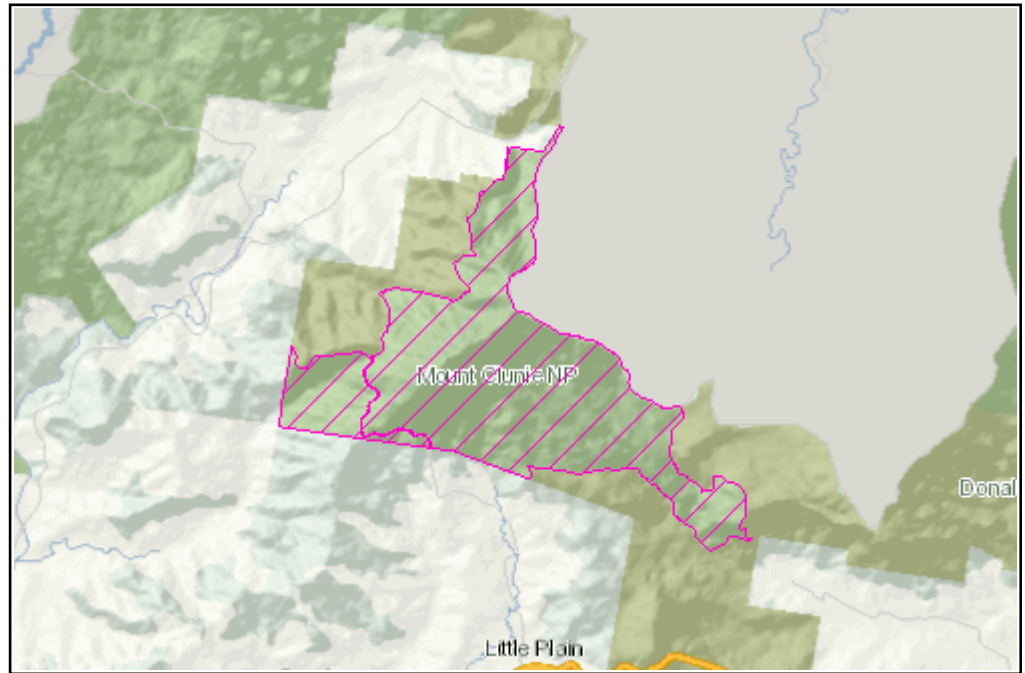
NPWS reserve: Mount Clunie National Park

Occurs on private land: No

Estimated population size: Unknown

Management site map

Legend	
	Key Management Site
	Additional Management Site



Management activities to protect the narrow-leaved plecranthus at the site

Threat name	Objective	Action
Inappropriate fire regime	Maintain appropriate fire regime for the species	Liaise with government agency
Lack of distributional information	Identify additional population(s)	Population and threat assessment

Monitoring actions

Regular monitoring of species abundance, extent and condition on the site will be conducted to determine population trends through time. The extent and severity of threats is proposed to be monitored to assess the effectiveness of management actions.

Site 2: Koreelah National Park

All of Koreelah National Park.

Total site area (ha): 5,287.00



LGA: Tenterfield

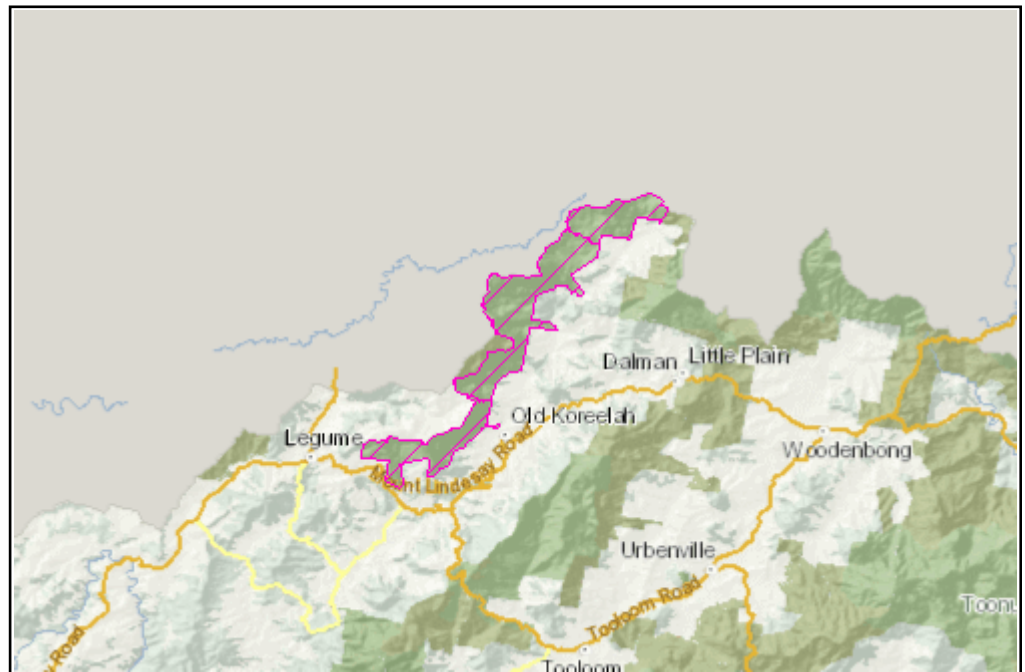
NPWS reserve: Koreelah National Park

Occurs on private land: No

Estimated population size: Unknown

Management site map

Legend	
	Key Management Site
	Additional Management Site



Management activities to protect the narrow-leaved plecranthus at the site

Threat name	Objective	Action
Disturbance from recreational users	Minimise impacts of recreational activities	Liaise with government agency
Inappropriate fire regime	Maintain appropriate fire regime for the species	Liaise with government agency
Lack of distributional information	Determine area of occupancy of the species	Population and threat assessment
Mixed weeds	Reduce and maintain weed densities at low levels	Site-based weed control

Monitoring actions

Regular monitoring of species abundance, extent and condition on the site will be conducted to determine population trends through time. The extent and severity of threats is proposed to be monitored to assess the effectiveness of management actions.

Site 3: Little Plain

Bald Knob State Forest, near Mt Lindsay Road.

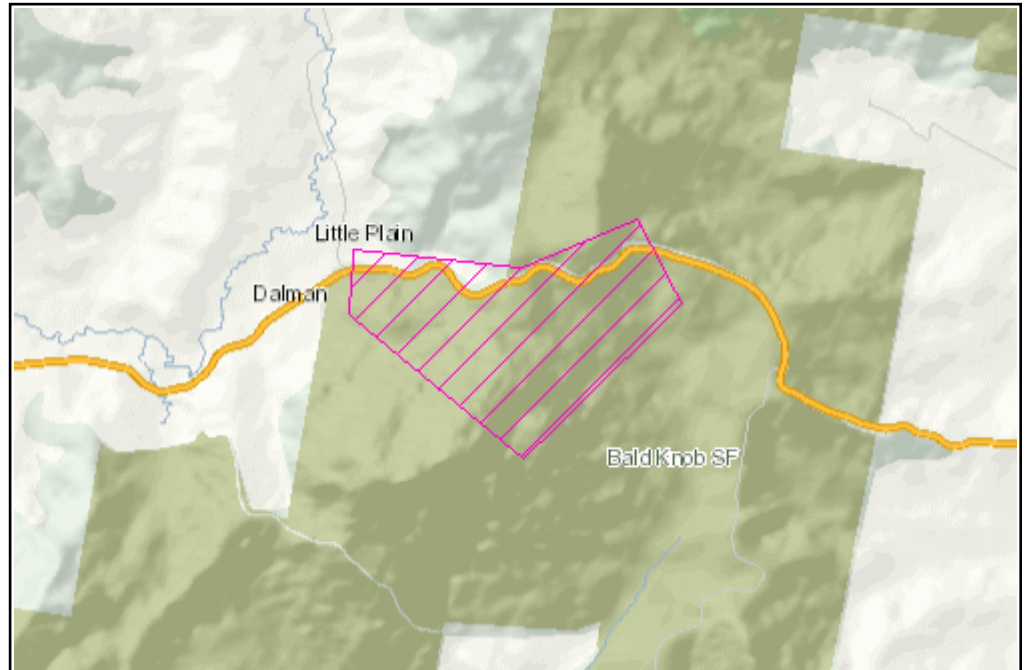
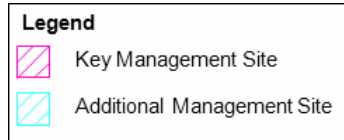
Total site area (ha): 273.00

LGA: Tenterfield

Occurs on private land: No

Estimated population size: 16

Management site map



Management activities to protect the narrow-leaved plectranthus at the site

Threat name	Objective	Action
Inappropriate fire regime	Maintain appropriate fire regime for the species	Liaise with government agency
Disturbance from recreational users	Minimise impacts of recreational activities	Facilitate seed production

Monitoring actions

Regular monitoring of species abundance, extent and condition on the site will be conducted to determine population trends through time. The extent and severity of threats is proposed to be monitored to assess the effectiveness of management actions.

Are you helping to save threatened species?

Tell us about the work you're doing, and find out more about our program - visit <http://www.environment.nsw.gov.au/savingourspecies>.