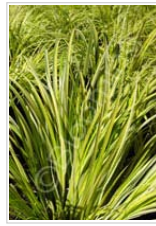




Acorus gramineus 'Oborozuki'
Striped Sweet Flag (Code: 4326)
 Grassy evergreen leaves with bright yellow stripes glimmer in the landscape. A graceful choice for moist soil or water's edge. (12" x 12") Zn6.



Acorus gramineus 'Ogon'
Sweet Flag (Code: 4254)
 The tufting, golden, evergreen foliage makes a striking border or accent plant. It even tolerates standing water. A "Great Plant Pick" for the Pacific Northwest! (12" x 12") Zn6.



Agropyron magellanicum
Blue Wheat Grass (Code: 3261)
 Clumping grass with striking metallic blue foliage. A great accent in perennial borders and containers. (12-18" x 12-18") Zn5.



Andropogon gerardi 'Lord Snowdon'
Big Bluestem (Code: 4423)
 Purple-hued flower spikes top striking silvery-blue blades in fall. The foliage turns an attractive soft plum after frost. (4-6' x 2') Zn4.



Arrhenatherum elatius bulbosum 'Variegatum'
Bulbous Oat Grass (Code: 2153)
 Short, bright white and green-striped foliage is topped by pure white seedheads in summer. It makes a nice spreading groundcover where temperatures are moderate. (12" x 24-36") Zn5.



Baumea rubiginosa
Golden Sword (Code: 6995)
 Fabulous foliage! Upright, leathery leaves are striped green and gold, making it an excellent vertical accent. Needs full to part sun and moisture. Excellent for containers and pond edges. (18" x 10") Zn7.



Bouteloua gracilis 'Blonde Ambition' *New*
Blue Gramma, Mosquito Grass (Code: 7804)
 The brush-like flowers rise up out of the blue-green foliage in mid-summer and are suspended horizontally for months on stiff, weather-resistant stems. The flowers turn chartreuse by fall and then mature to long-lasting blonde seed heads. Larger-growing than the native Blue Gramma. (24-36" x 24-36") Zn4. PPAF



Calamagrostis arundinacea brachytricha
Feather Reed Grass (Code: 2278)
 Upright fluffy flower spikes emerge briefly in early summer in Oregon, then bloom again in fall. A graceful and arching grass that grows well in moist locations. (3-4' x 3') Zn5.



Calamagrostis x acutiflora 'Avalanche'
Feather Reed Grass (Code: 5999)
 Medium-sized clumps showcase dramatically-striped foliage. Airy, rose-tinged plumes take on warm golden hues later in the season. (3-5' x 3-5') Zn5.



Calamagrostis x acutiflora 'Karl Foerster'
Feather Reed Grass (Code: 5160)
 Upright soft green leaves are topped by tall, vertical, rose-colored plumes that mature to a golden-wheat color. This 2001 Perennial Plant Association Plant of the Year is also a "Great Plant Pick" for the Pacific Northwest! (5' x 2') Zn4.



Calamagrostis x acutiflora 'Overdam'
Feather Reed Grass (Code: 6007)
 Arching, green and white-striped leaves are topped by upright bronze flower spikes that gradually fade to buff. The foliage takes on a green-to-red tinge in the fall. (3' x 2') Zn5.



Carex buchananii
Leather Leaf Sedge (Code: 2328)
 Copper-bronze leaves with curly tops make a dramatic accent in the mixed border or container. The graceful, upright form looks best contrasted with silver foliage or with brightly colored flowers. (24" x 18") Zn7.



Carex buchananii 'Viridis'
Leather Leaf Sedge (Code: 5655)
 This graceful, finely-textured, evergreen grass forms an upright clump of curly-topped light green leaves. It makes a striking accent for the perennial border or container. (18-24" x 18") Zn7.



Carex comans 'Frosted Curls'
New Zealand Hairy Sedge (Code: 2511)
 Very graceful, finely-textured, pale silver-green leaves form a low arching mound of foliage. It makes a beautiful, soft-textured evergreen groundcover when planted in groups. (12" x 16") Zn7.





Carex comans 'Milk Chocolate'
New Zealand Hairy Sedge (Code: 4236)
 Delicious milk chocolate-colored, evergreen grass with long thin blades that curve gracefully outward. Similar to C. 'Frosted Curls' but with a rich brownish-red hue. (12" x 12-24") Zn7.



Carex dolichostachya 'Kaga nishiki'
Gold Fountain Sedge (Code: 4805)
 Fine green leaves have a gold stripe along each edge. Low and fountain-like, this sedge works well in drifts, as a formal border or specimen. Tolerant of many conditions and exposures. (12" x 24") Zn5.



Carex elata 'Bowler's Golden'
Golden Sedge (Code: 6285)
 This incandescent, golden grass makes a gorgeous foliage accent for the mixed border or pond perimeter. A "Great Plant Pick" for the Pacific Northwest! (24-36" x 24-36") Zn5.



Carex flacca
Blue Sedge (Code: 3734)
 Evergreen chalky-blue blades spread to form a groundcover that will tolerate shade. Blue flowers on blue stems appear in early summer. (15" x 15") Zn4.



Carex flacca 'Blue Zinger'
Carex (Code: 4239)
 Tufted bluish-gray, grassy foliage slowly spreads to form an evergreen groundcover. Very versatile and easy to grow. (10-18" x 12-16") Zn5.



Carex flagellifera
Weeping Brown Sedge (Code: 2281)
 This graceful and finely-textured grass has arching mounds of orange-bronze foliage. It makes a nice contrast with silver foliage and brightly colored flowers. (18" x 24") Zn7.



Carex flagellifera 'Kiwi'
Sedge (Code: 4941)
 A soft fountain-like evergreen with finely-textured pale green blades and yellow highlights. Perfect for containers and borders. Golden highlights appear in fall. (18" x 18") Zn7.



Carex morrowii 'Aureovariegata'
Variegated Sedge (Code: 2329)
 This easy-to-grow evergreen grass forms a mounding clump of butter-yellow-striped leaves with green edges. A truly beautiful sedge, useful as an accent, in groups as a groundcover, or as a container subject. (12" x 15") Zn5.



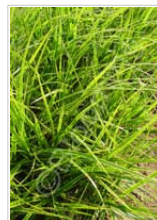
Carex morrowii 'Ice Dance'
Variegated Sedge (Code: 6653)
 Dark green leaves with white edges form arching mounds of evergreen foliage. It will spread to form a groundcover that's easy to control. A "Great Plant Pick" for the Pacific Northwest! (12" x 18") Zn5.



Carex morrowii 'Silver Sceptre'
Sedge (Code: 4752)
 Green leaves with silver-white edges form dense, creeping tufts. Pale and wispy flowers appear in late spring. An excellent evergreen groundcover among Hostas, ferns or bamboo. (18" x 42") Zn6.



Carex muskingumensis 'Ice Fountains'
Palm Leaf Sedge (Code: 6190)
 Slender blades have distinct white interiors. The white variegation gradually turns to pale green by midsummer. It spreads slowly to form a small colony in moist soils. (28" x 18") Zn3.



Carex muskingumensis 'Oehme'
Palm Leaf Sedge (Code: 4166)
 Abundant narrow green leaves in spring resemble a miniature palm tree. The narrow leaves have vivid yellow margins by summer. (24" x 24") Zn4.



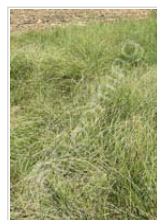
Carex nigra 'Variegata'
Variegated Sedge (Code: 6297)
 Light green blades to 12" are softly edged in yellow. This vigorous groundcover is good for partial shade. It will also tolerate drier soils. (12" x 18") Zn5.



Carex oshimensis 'Evergold'
Sedge (Code: 3890)
 This popular clump-forming sedge has light yellow blades with green edges. The evergreen foliage is a standout in the garden any time of year. (10-12" x 12") Zn5.



Carex phyllocephala 'Sparkler'
Sedge (Code: 4528)
 Whorls of boldly variegated green and white blades will literally stop traffic. Exciting and exotic, this tough garden jewel will add a bright spot to any landscape or mixed planter. (12-18" x 12-18") Zn7.



Carex subfusca
Rusty Sedge (Code: 7419)
 This native western US sedge is found everywhere from the sea to the desert. Low growing with narrow, upright, dark green leaves, it spreads to form a low maintenance lawn or groundcover. Easy to grow in almost any situation. (4-10" x 18-36") Zn5.



Carex testacea
Copper Hair Sedge (Code: 5540)
 Unusual, finely-textured bronzy blades turn nearly orange in sun and almost olive-green in shade. It forms a rounded mound of arching foliage that is excellent for rock gardens, massing, or container plantings. (16" x 12") Zn6.



Carex trifida 'Rekoku Sunrise'
Sedge (Code: 4527)
 Bold strap-like foliage has green centers elegantly edged in gold. This newcomer from New Zealand is sure to add a distinctive flair to mixed containers and patios, and competes well with other tropicals. (12-18" x 12-18") Zn7. PPAF Propagation Prohibited.



Carex tumulicola
Berkeley Sedge (Code: 6823)
 Very narrow bright green blades form evergreen dumps. Use as a groundcover under trees or in moist areas. It reseeds readily. Native to the Pacific Northwest. (12" x 18") Zn7.



Chasmanthium latifolium
Woodland Sea Oats (Code: 2374)
 Clusters of flattened, nodding spikelets top arching stems. The attractive seedheads persist through winter. In the Pacific Northwest, it needs a sunny site that stays moist in summer. Despite the name, it is not a dune grass. (3' x 2-3') Zn5.



Chasmanthium latifolium 'River Mist'
Woodland Sea Oats (Code: 6648)
 The striking green and white variegated foliage makes this a great specimen plant. Late summer and early fall brings dangling oat-like spikelets that provide interest well into the winter as they dry out. (30-36" x 24-30") Zn5. PPAF Propagation Prohibited



Chionochloa rubra
Red Tussock Grass (Code: 4701)
 Wonderful strong red-copper foliage color. This grass is fine-textured with a graceful mounding form and makes a gorgeous accent plant. Native to New Zealand. (3-5' x 3-5") Zn8.



Cortaderia selloana 'Icalma'
Blue Pampas Grass (Code: 5576)
 This wonderful garden-sized pampas grass grows only 3-4' tall and blooms in late summer above blue-green foliage. The feathery white plumes make great fresh or dried cut flowers. (3-4' x 3-4') Zn7.



Cortaderia selloana 'Pumila'
Pampas Grass (Code: 3895)
 This smaller, hardier pampas grass has very showy, fluffy, white flowers. It creates an excellent 6' tall focal point near walls and corners from fall through winter. (6' x 6') Zn6.



Deschampsia caespitosa
Tufted Hair Grass (Code: 5161)
 Attractive arching green blades are topped with large, pendulous panicles which turn from green to yellow through the season. It grows best when temperatures are moderate. (2-4' x 3') Zn4.



Deschampsia caespitosa 'Fairy's Joke'
Tufted Hair Grass (Code: 6219)
 Arching slender green leaves sport tiny plantlets at the tips in place of seeds. The inflorescences are weighted down by the plantlets, and can root if contacting soil. (2-4' x 3') Zn4.



Deschampsia caespitosa 'Northern Lights'
Tufted Hair Grass (Code: 4214)
 Glowing green and white-striped leaves take on a pink blush in cool weather and when new. It has a nice clumping habit with airy flower panicles that appear in summer. (12" x 12") Zn4.



Deschampsia caespitosa 'Schottland'
Tufted Hair Grass (Code: 4212)
 Huge, light & airy flower panicles rise 3' above evergreen blades, providing an enjoyable display from early summer through winter. The evergreen foliage looks best when temperatures are moderate. (3' x 2-3') Zn4.



Deschampsia flexuosa 'Aurea' ('Tatra Gold')
Crinkled Hair Grass (Code: 5715)
 Finely-textured, arching golden foliage tufts are topped by nodding purple-tinged panicles in June and July. Lovely specimen for the border or woodland garden. It performs best in rich soil and partial shade. (20" x 12") Zn4.



Eragrostis chloromelas
Boer lovegrass (Code: 7558)
 This is a densely tufted, clump-forming, warm season grass with narrow powder-blue foliage. The 3 foot tall flowers stalks rise in late spring or early summer, opening into a buff colored haze of flowers that lasts into fall and winter. (24-36" x 24-30") Zn7.





Eragrostis tef 'Ruby Silk'

Lovegrass (Code: 4095)

Rich burgundy seedheads gracefully drape over compact clumps of upright foliage. Excellent for cut or dried flower arrangements as color doesn't fade! (18-24" x 18") Zn10.



Festuca 'Silver Heron'

Blue Fescue (Code: 2173)

This unique fescue exhibits a marvelous multi-hued effect. Most of the narrow, needle-like blades are a lovely sea-blue, others are green. Rounded tufts bloom with pale beige spikes in summer. (8-10" x 12") Zn4.



Festuca californica

California Fescue (Code: 7420)

Finely-textured grayish blue-green blades form a soft evergreen mound. Drooping, violet-tinged flower stems are held above the foliage from late spring to early summer. It's wonderful as a groundcover or edging plant. (12-18" x 12-16") Zn7.



Festuca glauca 'Boulder Blue'

Blue Fescue (Code: 4678)

This wonderful small mounding fescue has a deep, frosty-blue hue. Golden inflorescences bloom in spring, then fade to a wheat color that lasts through fall. (8-10" x 12") Zn4.



Festuca glauca 'Elijah Blue'

Blue Fescue (Code: 5990)

Compact, soft powder-blue mound of finely-textured leaves is followed by narrow, wheat-colored plumes. Great as edging or in the front of the border, it is also good for the rockery. (8-12" x 8-12") Zn4.



Festuca idahoensis 'Siskiyou Blue'

Fescue (Code: 4662)

This elegant grass has frosty blue-green, finely-textured foliage all year. Clump forming, it stands up to heat and drought. Tall flowering plumes appear in late spring. (12-18" x 12") Zn5.



Festuca idahoensis 'Stanislaus River'

Fescue (Code: 4651)

This evergreen grass is more compact than the species, with blue-green foliage. Tan flowerheads appear from late spring through early summer. (12" x 12-16") Zn5.



Festuca ovina 'Blauglut'

Blue Fescue (Code: 6168)

This compact, clumping grass features narrow blades of intense silver-blue. Thin, taupe flower spikes appear in late summer. (18" x 18") Zn4.



Hakonechloa macra

Japanese Forest Grass (Code: 4327)

Delicate bamboo-like foliage graces this slow-spreading, non-invasive grass. The foliage takes on a reddish-pink cast in fall, turning to bronze in winter. A "Great Plant Pick" for the Pacific Northwest! (12-24" x 16") Zn5.



Hakonechloa macra 'Albostrata'

Japanese Forest Grass (Code: 4540)

Creamy-yellow striped blades in spring fade to white in late summer. It forms a nicely-rounded mound. This vigorous grower is a "Great Plant Pick" for the Pacific Northwest! (18" x 30") Zn5.



Hakonechloa macra 'All Gold'

Japanese Forest Grass (Code: 5220)

Beautiful lime-green and bright gold blades form a delicate soft mound. A stunning grass that moves in the slightest breeze. It grows best in moderately moist soil and full sun. A "Great Plant Pick" for the Pacific Northwest! (10" x 24") Zn6.



Hakonechloa macra 'Aureola'

Japanese Forest Grass (Code: 6824)

Bold creamy-yellow leaves are striped with green. A charming grass for containers and excellent cascading over rocks, or next to paths. 2009 Perennial Plant Association Plant of the Year. A "Great Plant Pick" for the Pacific Northwest! (18" x 24") Zn5.



Hakonechloa macra 'Beni Kaze'

Japanese Forest Grass (Code: 6838)

Arching, graceful foliage is green throughout the summer but turns varying shades of red in fall when the weather cools. A beautiful, easy-care ornamental grass for sun or shade. (12-18" x 12-18") Zn5.



Hakonechloa macra 'Naomi'

Japanese Forest Grass (Code: 4552)

The graceful windswept foliage is creamy-yellow and soft green most of the season. Later in fall, the foliage color changes to red and creamy-pink for an incredible display. Great for containers, or in the garden as an accent or edger. (18-24" x 18-24") Zn5. PP19897





Hakonechloa macra 'Nicolas'

Japanese Forest Grass (Code: 4553)

Awesome foliage in shades of green, gold and orange is sure to add a rich warm quality to the garden. Mass together to fill an awkward corner, or use as a vertical accent in mixed containers. (18-24" x 18-24") Zn5. PP19898 Propagation Prohibited.



Helictotrichon sempervirens

Blue Oat Grass (Code: 2817)

This dumping grass forms nice, spiky blue-green mounds topped by narrow, tan flower plumes. Among the very best of the mid-sized blue-leaved grasses. A "Great Plant Pick" for the Pacific Northwest! (18" x 18") Zn3.



Helictotrichon sempervirens 'Sapphire'

Blue Oat Grass (Code: 4324)

Intensely-blue evergreen blades form a spiky clump of foliage. Tan flower plumes appear in summer. Great as a specimen or mass planting. A "Great Plant Pick" for the Pacific Northwest. (2' x 2') Zn3.



Imperata cylindrica 'Red Baron'

Blood Grass (Code: 2913)

The brilliant red leaf blades are even more iridescent when back-lit by the autumn sun; especially when planted en masse. This short grass prefers moist areas. (WA and OR only) (18" x 12") Zn6.



Juncus 'Occidental Blue'

Bog Rush (Code: 5541)

Clumps of stiffly-upright, blue-gray needles radiate from its base. Creates a marvelous textural accent, adding cool hues and bold form to any garden. It prefers moist to wet locations. (12" x 12") Zn5.



Juncus effusus 'Gold Strike'

Common Rush (Code: 5198)

Good selection for gardens with wet, boggy areas or standing water. Distinctive gold stripe runs full length of each blade giving the plant a strong vertical emphasis. (2-3' x 2') Zn5.



Juncus effusus 'Unicorn'

Giant Corkscrew Rush (Code: 4680)

Blades are extra long and thick with curled and twisted, deep green leaves that add interest to any garden. Great for floral arrangements too! It's like Juncus 'Spiralis' on steroids! (24" x 30") Zn4.



Juncus inflexus 'Afro'

Blue Medusa Rush (Code: 5199)

Powdery-blue spiraling stems twist and contort to 18". Great in containers, as a shallow pond specimen or in a moist garden. Very vigorous and easy to grow. (18" x 24") Zn6.



Juncus inflexus 'Blue Arrows'

Common Rush (Code: 4984)

The gray-blue foliage grows in stiff, upright clumps. This moisture loving rush is heat and drought tolerant too! Perfect for containers or as accent in the garden. (24-36" x 18-24") Zn5.



Koeleria 'Tiny Tot' ^{New}

Blue Hair Grass (Code: 7659)

This dwarf ornamental grass has distinctly blue-green fine-textured foliage that's topped by narrow erect flower panicles in late spring. The inflorescences open light green and then age to a pleasing buff color. Excellent when used as a filler in mixed containers. (8-10" x 8-12") Zn5.



Leymus (Elymus) condensatus 'Canyon Prince'

Dune Grass (Code: 2692)

This medium-sized gray-blue grass has erect flower stalks that rise 1-2' above the foliage and are topped with spikes of wheat colored blooms. Drought tolerant and evergreen, it spreads by rhizomes, but is not invasive. (2-3' x 2-3') Zn7.



Leymus arenarius 'Findhorn'

Lyme Grass (Code: 6911)

The lovely stiff, metallic blue-gray leaves will spread by means of underground rhizomes. It is excellent for banks and erosion control. (2' x 3') Zn4.



Miscanthus 'Huron Sunrise'

Japanese Silver Grass, Eulalia (Code: 7263)

One of the best Miscanthus for northern climates, it flowers profusely in August so you can enjoy the graceful blooms long before frost. The burgundy flower plumes are held well above the foliage with no flopping. (5-6' x 3-4') Zn4. PPAF Propagation prohibited.



Miscanthus oligostachyus 'Purpurascens'

Flame Grass, Eulalia (Code: 3117)

One of the best grasses for fall color! Silvery inflorescences appear above broad, reddish-purple leaves in autumn. The winter foliage is a rich bronze-brown. (3' x 2') Zn4.





Miscanthus sinensis 'Adagio'
Dwarf Japanese Silver Grass (Code: 6601)
 This truly superior dwarf selection is topped by pink flowers that fade to white. Finely-textured, silver-gray blades lend an elegant touch to the landscape. A "Great Plant Pick" for the Pacific Northwest! (3' x 3') Zn6.



Miscanthus sinensis 'Gilt'
Japanese Silver Grass (Code: 5440)
 Bright green new growth matures to gold and green with white-striped midrib. Excellent as a privacy screen. (7' x 3-4') Zn7.



Miscanthus sinensis 'Gold Bar'
Japanese Silver Grass (Code: 3277)
 The leaf blades have dramatic horizontal gold banding that really glows in the sun. This dwarf form is perfect for smaller gardens or containers. A "Great Plant Pick" for the Pacific Northwest! (3-4' x 20") Zn5. PP15193 Propagation Prohibited.



Miscanthus sinensis 'Graziella'
Japanese Silver Grass (Code: 4538)
 Finely-textured blades with slender silvery midribs, create an overall stately upright habit. Flower plumes appear in August, at first emerging silky rose-pink, then aging to a nice silvery-white. Good orange fall color. (5-6' x 3') Zn5.



Miscanthus sinensis 'Malepartus'
Japanese Silver Grass (Code: 5885)
 Strong-growing grass with large pink-purple flower plumes in August that fade to silvery-taupe by fall. The plumes are highlighted with gorgeous fall color in rainbow shades. (6-7' x 4') Zn5.



Miscanthus sinensis 'Positano'
Japanese Silver Grass (Code: 6815)
 Striking reddish plumes top this tall, graceful grass. Use as an eye-catching garden accent or specimen. Wonderful fall color. (6-7' x 5') Zn5.



Miscanthus sinensis 'Rigoletto'
Japanese Silver Grass (Code: 4510)
 Beautiful dwarf, variegated grass with a fine texture. Similar in appearance to Miscanthus 'Variegatus', but grows only 3 feet tall and therefore stays upright. (3' x 3') Zn6.



Miscanthus sinensis 'Cosmopolitan'
Japanese Silver Grass (Code: 6829)
 Vivid variegation! The leaf blades have wide, dazzling white edges. Coppery plumes appear in fall. This outstanding border accent is a "Great Plant Pick" for the Pacific Northwest! (6-8' x 4-5') Zn6.



Miscanthus sinensis 'Gold & Silver'
Maiden Grass (Code: 5548)
 Slender, arching foliage produces golden flowers that turn silver with age. Creates a striking effect in fall. (5-6' x 3') Zn5.



Miscanthus sinensis 'Gracillimus'
Japanese Silver Grass (Code: 5776)
 This finely-textured, narrow-leaved grass forms erect clumps. Leaves turn orange in fall. Copper-colored flowers appear in late September, maturing to silver through winter. A "Great Plant Pick" for the Pacific Northwest! (6' x 3') Zn4.



Miscanthus sinensis 'Grosse Fontaine'
Japanese Silver Grass (Code: 6598)
 Showy bronze plumes top large fountain-like foliage. Excellent fall color. Great as a specimen plant. (6-7' x 5') Zn5.



Miscanthus sinensis 'Morning Light'
Japanese Silver Grass (Code: 3121)
 Of great refinement and elegance, this grass has thin leaves with silver-variegated edges that shimmer when backlit. Inflorescences have a pink tinge at first, turning deep reddish-bronze later in fall. A "Great Plant Pick" for the Pacific Northwest! (4-5' x 3') Zn4.



Miscanthus sinensis 'Puenktchen'
Japanese Silver Grass (Code: 6691)
 Coppery-pink seedheads top stiffly-upright blades banded with gold. Adds an exotic look to the landscape. (5-7' x 3') Zn5.



Miscanthus sinensis 'Silberfeder'
Japanese Silver Grass (Code: 3120)
 Large, showy white flower plumes tower above fountain-like foliage. Blooming fall through winter, it makes an excellent landscape accent. A "Great Plant Pick" for the Pacific Northwest! (6-9' x 3') Zn5.





Miscanthus sinensis 'Strictus'
Japanese Silver Grass (Code: 5848)
 Stiffly-upright green blades, with strong horizontal bands of yellow, are very showy. Coppery flower spikes rise several feet above the foliage in fall. A great addition to any garden! (6-8' x 3-4') Zn4.



Miscanthus sinensis 'Zebrinus'
Japanese Silver Grass (Code: 5542)
 Large, arching, green leaves have horizontal bands of yellow and cream variegation. Coppery flower spikes rise several feet above the foliage in fall. It imparts a graceful and informal look to the landscape. (4-6' x 3') Zn5.



Molinia arundinacea 'Skracer'
Moor Grass (Code: 5628)
 Stiffly-upright, 5' tall, wiry stems carry delicate, airy yellow flowers above a foliage clump that remains 2-3' tall. The flowers have a translucent fountain-like effect when backlit. (4-5' x 2-3') Zn4.



Molinia caerulea 'Moorflamme'
Purple Moor Grass (Code: 6994)
 Airy clouds of dark flowerheads on fine 2' stems dance above a compact foliage clump. Very attractive rich purple fall colors. A "Great Plant Pick" for the Pacific Northwest! (2' x 2') Zn5.



Molinia caerulea 'Strahlenquelle'
Purple Moor Grass (Code: 6816)
 Airy, radiating flowerheads create a graceful fountain-like effect in late summer. Buttery-yellow fall color adds to the show. It prefers moderately moist soil. (3' x 3') Zn4.



Molinia caerulea 'Variegata'
Purple Moor Grass (Code: 6110)
 Dark green and cream leaves give off a golden glow, accented by ochre flower plumes in late summer. A compact grass and excellent for containers. A "Great Plant Pick" for the Pacific Northwest! (24" x 12") Zn5.



Nassella (Stipa) tenuissima
Mexican Feather Grass (Code: 3690)
 Silky creamy-gold inflorescences undulate like waves with any breeze. This marvelous grass contributes grace and elegance to the garden or container. (2' x 2') Zn7.



Panicum 'Huron Solstice' ^{New}
Switchgrass (Code: 7637)
 The blue-green foliage begins turning a deep burgundy-wine color in early summer, and by fall is almost totally burgundy, providing a stunning accent with its blazing fall color. Dainty, airy, purplish inflorescences appear atop the foliage in late August. (48" x 36") Zn4. PPAF



Panicum virgatum 'Cheyenne Sky'
Switchgrass (Code: 7635)
 The blue-green foliage turns deep red-purple from late summer through autumn. By late summer wine-red flower panicles appear just above the foliage. One of the hardiest purple foliage grasses available! (2-3' x 2-3') Zn4. PPAF



Panicum virgatum 'Cloud Nine'
Switch Grass (Code: 6689)
 Airy golden inflorescence create a soft transparent effect for the back of the border in late summer. Lovely light blue blades turn golden in fall. (6-8' x 3') Zn4.



Panicum virgatum 'Dallas Blues'
Switch Grass (Code: 7553)
 This robust grower has incredible blue foliage! Lofty plum colored panicles emerge in late summer or early fall and can grow to over 22" long! Good winter color. (5-6' x 3') Zn4. PP11202 Propagation Prohibited.



Panicum virgatum 'Dwarf'
Switch Grass (Code: 4877)
 Very nice blue-green foliage, topped by airy seed-heads in late summer, on a more compact form. Excellent for creating a hazy "translucent" effect in the border. From a seedling selected at our nursery. (36-42" x 24") Zn4.



Panicum virgatum 'Haense Herms'
Switch Grass (Code: 6622)
 Airy crimson inflorescences dance atop green blades with an elegant, slightly-weeping habit. The foliage turns to brilliant orange-red and burgundy from late summer through fall. (3-4' x 2') Zn4.



Panicum virgatum 'Heavy Metal'
Switch Grass (Code: 6325)
 Rigidly-upright, steel-blue foliage makes a great vertical accent. Airy, bronze plumes in late summer-to-fall creates a translucent effect. (4' x 2') Zn4.





Panicum virgatum 'Northwind'
Switch Grass (Code: 3510)
 Strongly vertical blue-green foliage is topped by beautiful narrow, erect plumes from late summer through fall. (5' x 2-3') Zn4.



Panicum virgatum 'Prairie Sky'
Switch Grass (Code: 4295)
 This true-blue grass makes an excellent vertical accent. The upright, softly-arching foliage has airy bronze clouds of tiny seedheads that glimmer from late summer to fall. (4' x 2') Zn4.



Panicum virgatum 'Rotstrahlbusch' (Red Ray Bush)
Switchgrass (Code: 5162)
 Airy crimson flowerheads dance atop red-tipped blades. Creates an upright arching mass. Burnished-red fall color makes this an outstanding grass. A "Great Plant Pick" for the Pacific Northwest! (3' x 2') Zn4.



Panicum virgatum 'Shenandoah'
Switch Grass (Code: 4403)
 This Panicum is unmatched for its burgundy-red foliage! The leaves start out green, then turn dark red by July, and eventually turn wine-colored by September. Airy red flower plumes appear in late summer. A "Great Plant Pick" for the Pacific Northwest! (2-3' x 2') Zn4.



Pennisetum 'Princess Molly'
Fountain Grass (Code: 7579)
 Thin, beautiful, olive-bronze leaves form a very compact grass. Plants have excellent disease resistance and weather tolerance. It will not flower except in totally frost-free areas. (14-20" x 18-24") Zn8. PPAF



Pennisetum alopecuroides
Fountain Grass (Code: 3202)
 9" long, arching foxtail flower-heads of marvelous silvery-purple. Clean and finely-textured, bright green foliage sways delightfully in the subtlest breeze. (4' x 4') Zn6.



Pennisetum alopecuroides 'Burgundy Bunny' *New*
Fountain Grass (Code: 7687)
 Clumps of fine leaves start green in spring, then have red accents in summer, topped with creamy white bunny-tail flowers. In autumn, the foliage color deepens until the entire plant is glowing red! (10-12" x 12-15") Zn6. PPAF



Pennisetum alopecuroides 'Cassian'
Fountain Grass (Code: 6042)
 Excellent orange-red fall color is displayed on this bushy fountain grass. Showy bronze flower plumes from August to September rise above compact foliage to 36". (30-36" x 30-36") Zn6.



Pennisetum alopecuroides 'Hameln'
Fountain Grass (Code: 5163)
 Dwarf cultivar with a much earlier bloom time than the species. Somewhat stiffer foliage and pale bronze foxtails. This is the most popular grass with designers. (2' x 2') Zn6.



Pennisetum alopecuroides 'Little Bunny'
Miniature Fountain Grass (Code: 6111)
 Cute, bronzy "bunny tail" plumes top this dwarf grass. Excellent planted en masse or as a specimen in the rock garden. Very easy to grow. (12" x 12") Zn6.



Pennisetum alopecuroides 'Moudry'
Fountain Grass (Code: 3203)
 Dramatically-arching, bright green grass is invaluable for late-season interest. Striking fat, blackish-brown bottle brush spikes appear in late summer. Excellent cut flower. (2' x 2') Zn5.



Pennisetum alopecuroides 'Piglet'
Fountain Grass (Code: 4857)
 Dwarf fountain grass taller than P. 'Little Bunny', but shorter than P. 'Hameln'. Foxtail-like plumes are showy and contrast nicely with other summer blooming perennials. (15-18" x 18-24") Zn6. PP19074 Propagation Prohibited.



Pennisetum alopecuroides 'Redhead'
Fountain Grass (Code: 4241)
 Bronze-red, feather-like plumes are produced in late August to early September, a month earlier than others of this genus. A perfect companion plant for Echinacea. (4' x 3') Zn5.



Pennisetum messiacum 'Red Buttons'
Fountain Grass (Code: 4712)
 This compact grass has stunning inflorescences that emerge red, then mature to cream. The narrow foliage is green, touched with burgundy. It's superb as a groundcover or specimen in the garden border. (2-3' x 3-4') Zn6.





Pennisetum orientale 'Karley Rose'
Fountain Grass (Code: 4436)
 Smokey, rose-purple flower plumes add incredible texture and color to the garden all summer long. Deep olive-green leaf blades form uniform clumps. A "Great Plant Pick" for the Pacific Northwest! (36-40" x 30") Zn5. PP12909
 Propagation Prohibited.



Pennisetum orientale 'Tall Tales'
Fountain Grass (Code: 4539)
 Vigorous upright grower forms an arching clump 4-5' tall. Tan plumes to 9" long are tinged pink and held another 12" above the foliage. An outstanding selection. (4-6' x 4') Zn6.



Pennisetum purpureum 'Princess Caroline'
Napier Grass (Code: 7578)
 'Princess Caroline' provides brilliant purple foliage on plants that stay compact. It has better disease resistance, excellent weather tolerance and sturdier growth. Plants will not flower except in totally frost-free areas. (36" x 30-36") Zn8. PPAF



Pennisetum setaceum 'Fireworks'
Fountain Grass (Code: 4573)
 The most popular container grass of all time is now available in a gorgeous variegated form, combining red with bright pink and white stripes. Super for mixed planters and massed in the landscape. Stunning! (36" x 18-24") Zn9. PP18504 Propagation Prohibited.



Pennisetum setaceum 'Rubrum'
Purple Fountain Grass (Code: 4108)
 Stunning smokey-purple blades with red highlights and foxtail-like plumes bloom midsummer through frost. A fabulous vertical accent for containers. (30-36" x 24-36") Zn9.



Pennisetum setaceum 'Skyrocket' *New*
Fountain Grass (Code: 7594)
 Bright green & pristine white variegated foliage explodes with pink plumes in summer. A sport of P. 'Fireworks'. Highly recommended for containers! (24-30" x 18-24") Zn9. PPAF



Pennisetum spathiolatum
Slender Veldt Grass (Code: 6989)
 Unique "bunny tail" flower spikes studded with black seeds, rise to 3' on this easy to grow beauty. Gray-green, evergreen foliage adds interest and grows to 12". (3' x 3') Zn8.



Phormium 'Candy Stripe'
New Zealand Flax (Code: 2827)
 Stiff, upright, sword-like evergreen leaves are marked with pink, green & cream stripes. A beautiful architectural plant for patio or garden. (3-4' x 3') Zn8.



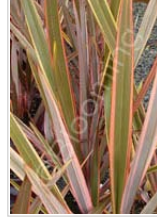
Phormium 'Dusky Chief'
New Zealand Flax (Code: 6975)
 1.5" wide smokey maroon-red, sword-like foliage has gracefully-curved tips. Striking alone or mixed in containers. (3-4' x 3-4') Zn8.



Phormium 'Evening Glow'
New Zealand Flax (Code: 3824)
 Brightly colored reddish-pink leaves are erect when young and become an upright, arching cluster of foliage when older. (3-4' x 3-4') Zn8.



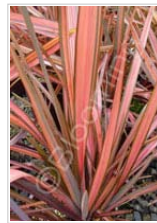
Phormium 'Jester'
New Zealand Flax (Code: 3822)
 Upright, arching strap-like leaves have pink centers and lime-green margins. It makes a showy centerpiece in a container! (3-4' x 3-4') Zn8.



Phormium 'Maori Queen'
New Zealand Flax (Code: 6981)
 This stiff, upright plant has 2" wide olive-green strap-like leaves edged in bright rose-red. The edges eventually fade to a cream color. Great for creating tropical effects in the garden and for mixed containers. (3-4' x 3-4') Zn8.



Phormium 'Platts Black'
New Zealand Flax (Code: 3863)
 Arching, very dark brown-black, leaves gleam on this spreading form. An excellent evergreen container plant. (2-3' x 2-3') Zn8.



Phormium 'Rainbow Sunrise'
New Zealand Flax (Code: 3825)
 The bronze foliage has red and pink variegation that tends to be more pink in the center. The colorful foliage makes an impact in the landscape year-round. (3' x 4-6') Zn7.





Phormium 'Red Sparklers'
New Zealand Flax (Code: 4885)
 Outstanding burgundy foliage adds dramatic accent to a sunny border or mixed container. Compact habit. (3-4' x 3-4') Zn8.



Phormium 'Tom Thumb'
New Zealand Flax (Code: 6986)
 This dwarf New Zealand flax features undulating 1/2" wide green leaves with bronzy-red margins. Excellent planted in groups or as a container accent. (12-24" x 12") Zn8.



Phormium 'Variegated Dwarf'
New Zealand Flax (Code: 6977)
 Dark green leaf blades have lime-green margins, making a stunning statement. The foliage grows up to 4' tall even though it's considered a dwarf! It makes an ideal container plant. (4' x 3') Zn8.



Phormium 'Wings of Gold'
New Zealand Flax (Code: 5290)
 Broad, bright gold centers contrast vividly with margins of fresh green. With a stiff and upright habit, it creates an eye-catching vertical accent in containers. (4' x 4') Zn8.



Phormium cookianum 'Flamingo'
New Zealand Flax (Code: 6958)
 Beautiful foliage has bright stripes of cream, pink and olive green. A stunning statement in the sunny garden and perfect for that tropical look. (2-4' x 2-4') Zn8.



Phormium tenax 'Black Rage'
New Zealand Flax (Code: 3939)
 Stunning smoky-purple leaves have contrasting silvery-blue undersides. It makes a bold statement in the garden or containers. (4' x 4-6') Zn8.



Phormium tenax 'Bronze'
New Zealand Flax (Code: 4792)
 Bold, bronze-leaved accent plant creates a tropical look in containers. It provides striking contrast with plants that have chartreuse foliage. (4' x 3') Zn8.



Phormium tenax 'Dark Delight'
New Zealand Flax (Code: 2288)
 Dark reddish-bronze foliage forms graceful, arching clumps. Compact habit reaches only to 3-4'. (4' x 3') Zn8.



Phormium tenax 'Sundowner'
New Zealand Flax (Code: 6979)
 Broad gray-green leaves have hot pink edges. The fabulous foliage is stunning year-round in the garden and is simply sublime in containers! (4-6' x 4') Zn8.



Pleioblastus pygmaeus
Dwarf Green Bamboo (Code: 2110)
 Vigorous, spreading underground rhizomes produce upright woody stems with grassy-green culms. Great as a groundcover in woodland or oriental landscapes. (3' x 5') Zn6.



Schizachyrium scoparium 'Blaze'
Little Bluestem (Code: 6852)
 Bluish-green, medium to finely-textured blades form a nice-sized clump. The leaves are ablaze with reddish-hues in fall and winter. (3' x 2') Zn4.



Schizachyrium scoparium 'The Blues'
Little Bluestem (Code: 6192)
 Finely-textured, silver-blue grass is topped with narrow willowy plumes in late summer. It has fantastic reddish-burgundy fall color. A native cultivar from the prairies, it tolerates heat and humidity. (12" x 12") Zn4.



Scirpus tabernaemontani 'Zebrinus'
Zebra Rush (Code: 4303)
 Beautiful horizontal gold bands encircle narrow, deep green leaves. This is an excellent vertical accent for moist soil by a pond or stream. (4' x 10-2') Zn5.



Sesleria autumnalis
Autumn Moor Grass (Code: 3542)
 Finely-textured light evergreen blades form a nice rounded clump that is drought tolerant. Tight creamy-white flower spikes appear late summer and persist into winter. It can be massed for a dramatic effect. (16" x 12") Zn5.





Sesleria caerulea

Blue Moor Grass (Code: 5544)

Attractive compact, evergreen grass displays both sea-blue & green leaf blades simultaneously. The low growing clumping form makes this grass excellent for edging. (8" x 12") Zn4.



Stipa gigantea

Giant Feather Grass (Code: 3578)

Numerous golden seeds dangle from tall stiff stalks, creating an "aura" when back-lit. Magnificent as a specimen grass or for cut flower arrangements. A "Great Plant Pick" for the Pacific Northwest! (6-9' x 3-6') Zn6.



Stipa lessingiana 'Capriccio'

Needle Grass (Code: 4848)

This finely-textured green grass creates a soft, delicate appearance in mixed containers or the landscape. (14-16" x 24-30") Zn6.



Typha latifolia 'Variegata'

Variegated Cattail (Code: 4218)

Bold green and white-striped leaves highlight cinnamon-brown cattails. Wonderful for water gardens or perpetually-moist areas. It does not spread as aggressively as the species. (5-6' x 2') Zn4.



Uncinia rubra

Red Hook Sedge (Code: 4177)

This evergreen New Zealand sedge displays rich, bronze-colored blades. A marvelous addition to any garden. It prefers a cool, moist site in sun or partial shade. (18" x 24") Zn8.



Uncinia rubra 'Belinda's Find'

Red Hook Sedge (Code: 7609)

Rich cherry-red leaf margins brighten the colorful bronze foliage. Ideal as a specimen at the front of the perennial border. It's also especially useful to brighten autumn & winter containers. (12" x 12-16") Zn8.

