



PRICKLY NEWS

SOUTH COAST CACTUS & SUCCULENT SOCIETY NEWSLETTER | MAY 2021

Laurel Woodley **ZOOM PRESENTATION**
 Sunday, May 9 @ 1:30 pm

“Getting to know Kalanchoe”



Many thanks to M.A. Bjarkman for chairing the last meeting, and to Laurel Woodley for presenting the slide show in my absence. I enjoyed watching the recorded presentation by Karen Ostler on staging plants.

The recording of the presentation and photo slide show is available to you through the website for a limited period of time.

I hope all of you are doing well and encourage all to be vaccinated against the Covid virus. I hope we can meet in person once the Garden facilities are open for events. At this time we do not know if the same facilities will be available to us, and will wait for the Garden’s decision.

CALL FOR PHOTOS May’s Mini Show plants are Cactus: Coryphantha, Escobaria, Acharagma and Succulent: Dudleya and Cotyledon.


Please E-mail photos for the monthly Mini Show to me at minniecap@icloud.com by May 7th so I may present them at the upcoming Zoom meeting. If you have a plant in the ground or want to share your garden, those photos are also welcome.


Please join in on Sunday, May 9th, Mother’s Day at 1 PM for social half hour and 1:30 PM for Laurel Woodley’s presentation on Kalanchoe.


Stay well and keep in touch!
 MARIA CAPALDO

SHARE YOUR GARDEN OR YOUR FAVORITE PLANT

Email me with photos of your garden and/or plants that we can publish as a way of staying connected.
minniecap@icloud.com

 [To learn more visit southcoastcss.org](https://southcoastcss.org)

 [Like us on our facebook page](#)

 Follow us on Instagram, [_sccss_](#)

IN THIS ISSUE

PRESENTER OF THE MONTH	2
WHAT’S IN YOUR GARDEN?	3
MINI SHOW PLANT CALENDAR	4
CACTUS OF THE MONTH	6
SUCCULENT OF THE MONTH	8
LATIN LOOKUP	9
MINI SHOW APRIL PLANTS	11
MINI SHOW STANDINGS	17
CANCELLED EVENTS	18
BOARD OF DIRECTORS	18

“Getting to know Kalanchoe”

BY LAUREL WOODLEY



Laurel provides an overview of the range of species throughout the world with illustrations of both vegetative and floral characteristics. Kalanchoe cultivars and hybrids will be discussed along with their use in the SoCal landscape.

Laurel Woodley is a retired biology professor from Los Angeles Harbor College who has been involved in Southern California horticulture since the mid 1960's.

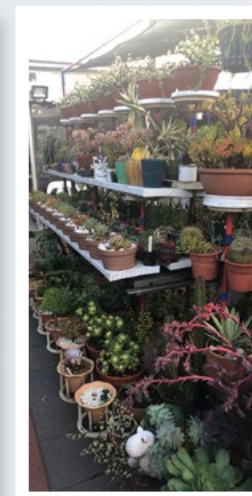
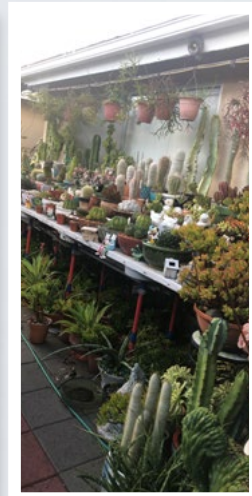
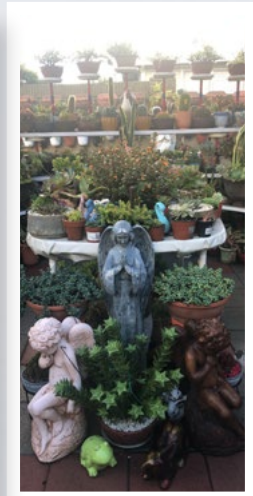
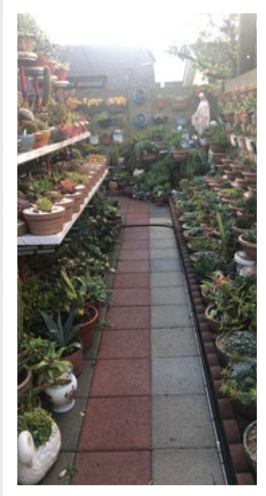
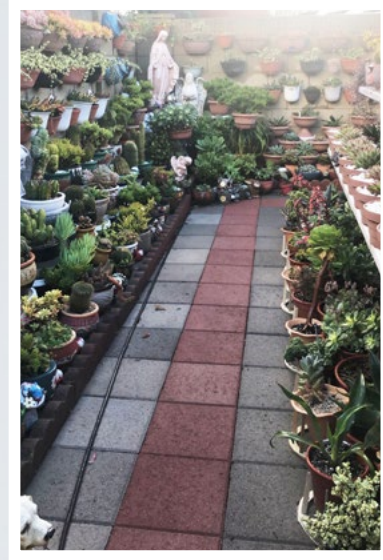
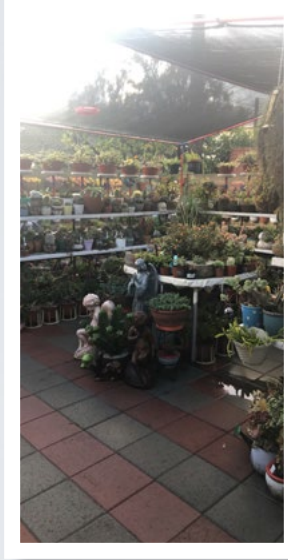
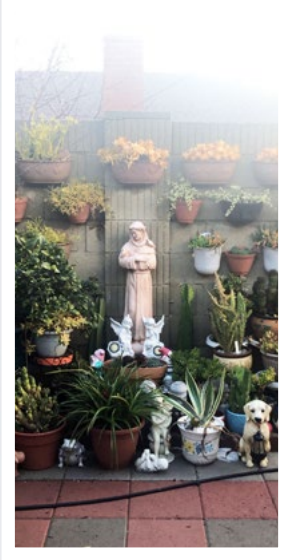
She is a past Director and President of the Cactus & Succulent Society of America (CSSA) and continues to serve as Advisor.

She has long collected and grown a variety of succulents and is an active member of the Sunset Succulent Society and South Coast Cactus & Succulent Society.



What's in your garden?

Gardens by **Sonita Bontad**



Wow! Thank you for sharing Sonita!
What's (*not?*) in your garden?

minniecap@icloud.com share by May 7, 2021

What's in your garden?

Gardens by Anita Kaplan



Thank you for sharing Anita!
What's in your garden?

minniecap@icloud.com share by May 7, 2021



Mini - Show Plant Calendar



Mini-Show Plants for 2021-2022

May 2021	Coryphantha, Escobaria, Acharagma	Dudleya, Cotyledon
June 2021	Gymnocalycium	Pachypodium
July 2021	Lobivia, Echinopsis	Sansevieria
August 2021	Ferocactus, Leuchtenbergia	Stapeliads (Stapelia, Huernia, Orbea)
September 2021	Discocactus, Uebelmania	Kalanchoe
October 2021	Miniature (3 inches or less)	Miniature (3 inches or less)
November 2021	North American Columnar Cacti (Saguaro, Cereus, etc.)	Senecio
December 2021	HOLIDAY POTLUCK???	HOLIDAY POTLUCK???
January 2022	Mammillaria single headed	Lithops, Conophytum
February 2022	Stenocactus, Echinofossulocactus	Euphorbia from Madagascar
March 2022	Thelocactus	Aeonium, Greenovia
April 2022	SHOW and SALE	SHOW and SALE



Monthly Cactus: Coryphantha and Acharagma

Cactus: Coryphantha and Acharagma

Coryphantha (from Greek, “flowering on the top”), or beehive cactus, is a genus of small to middle-sized, globose or columnar cacti. The genus is native to arid parts of Central America, Mexico, through Arizona, New Mexico, and western Texas and north into southwestern, central, and southeastern Montana. With its two subgenera, 57 species and 20 subspecies, it is one of the largest genera of cactus.

There are four characteristics that distinguish Coryphantha from other cacti.

1. Their bodies do not have ribs, just tubercles.
2. The flowers form at the top of the plant (the apex or growing end of the stem).
3. The tip (podarium) of each flowering tubercle has three parts, the spiny areole, the groove and the axil. Without the groove it is not a Coryphantha.
4. The seed coat (or testa) has a net-like pattern (reticulate).

More than many other cacti, the Coryphantha change in their appearance over their lifespan. The presence or absence of a central spine is not indicative of the genus, even in fully adult plants.

Acharagma is a genus of two small cacti species from Coahuila and Nuevo Leon in northern Mexico.

These plants have globose bodies less than 3 inches in diameter and no more than 3 inches high. They may be somewhat cylindrical in shape and typically grow as individuals, but may put off several offsets from the bottom. These plants have tubercles and flower from the top, which is similar to both Escobaria and Coryphantha, however, they do not have a groove from the areole to the axis. In fact, the name Acharagma means in Greek “no groove” [a (no) – charagma (groove)]. The flowers are at the stem tips, and range from cream to pink and yellow. The spines are quite thick and can obscure much of the stem and are less than an inch in length. The fruits are smooth little pods that are green to purple colored.

The genus is of relatively recent creation, the species originally being described as part of Escobaria, although recognized as a separate section by Nigel Taylor in 1983, and raised to a genus by Charles Glass in 1998.



Coryphantha vivipara



Coryphantha ramillosa



Coryphantha cornifera



Coryphantha cornifera



Acharagma aguirreanum



Acharagma huasteca



Acharagma roseana



By Tom Glavich



Monthly Cactus: Escobaria

Escobaria is a small North American genus from southwestern USA down to northern Mexico. It is closely related to *Coryphantha* and somewhat more distantly to *Mammillaria*.

Escobaria have small, funnel-shaped flowers in the spring and summer. The flowers are generally yellow, pink or brownish. In general Escobaria are very rot prone. They should be underpotted, be in a container with excellent drainage, and be watered carefully. All of them can take some frost.

Cactus: Escobaria



Escobaria zilziana



Escobaria tuberculosa



By Tom Glavich



Escobaria albicolumnaria



Escobaria vivipara



Escobaria sneedii



Escobaria minima



Escobaria asperispina



Escobaria robbinsorum



Monthly Succulent: Dudleya

Succulent: Dudleya

Dudleya is a genus of succulent perennials, consisting of about 45 species in southwest North America and northern Mexico. Only a handful are common in cultivation and many are on the endangered species list. A few can only be found on some of the islands off the California coast.

At one time Dudleyas were included in the Echeveria genus, and one can certainly see why as some species are a bit hard to tell from Echeverias. All Dudleyas are rosette-forming succulents, like the Echeverias, and many are similarly colored. Most Dudleyas are silvery grey, have very delicate leaves that are either flattened or tubular and tend to form stems over time. Most of the flat, thick-leaved forms grow as solitary rosettes while the tubular-leaved species form dense, suckering colonies. The flowers differ somewhat from Echeveria flowers and that is probably the primary reason they are in their own genus now. Dudleya flowers arise from somewhere near the bottom of the rosettes normally (rarely from the rosette center as most Echeveria flowers do). Also, Dudleya flowers are characteristically covered with leaves that are spread out along the peduncle up to the flower, another non-Echeveria-like trait. Most Dudleyas flower in late winter to early spring, and flower colors range from white, to yellow to bright red. In horticulture, Dudleya should be planted at an angle. This prevents the buildup of water in the leaves, which may lead to the leaves rotting.



Dudleya virens



Dudleya stolonifera



Dudleya lanceolata



Dudleya gnoma



Dudleya farinosa



Dudleya edulis



By Tom Glavich



Dudleya brittonii



Dudleya caespitosa



Dudleya brittonii



Monthly Succulent: Cotyledon

The species in the genus **Cotyledon** range from South Africa to Arabia. Many of the species that used to be included have been moved to the genus *tylecodon*. The remaining species have a very varied appearance, are generally small succulent shrubs.

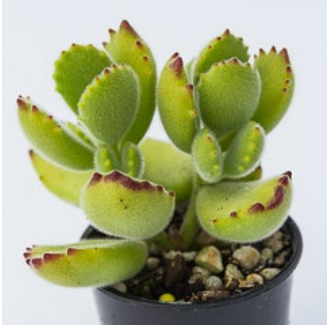
They can be used in landscaping in climates that are mostly frostless, and are interesting plants in raised beds or containers.

Most *Cotyledon* are easily grown from cuttings.

Succulent: Cotyledon



Cotyledon 'White sprite'



Cotyledon tomentosa



Cotyledon sinus-alexandrii



By Tom Glavich



Cotyledon macrantha



Cotyledon tomentosa



Cotyledon orbiculata



Cotyledon 'Mr. Butterfield'

Latin Lookup

Loquerisne Latine (Do you speak Latin)?
The meanings of latin plant names on the previous pages
– from <http://davesgarden.com/guides/botanary/>

CACTUS

Coryphantha [kor-ry-FAN-tha, kor-rif-AN-tha]
From the Greek koryphe (summit, top), and anthos (flower), referring to the position of the flowers on these cacti.

Escobaria [es-koh-BAR-ree-uh, es-koh-BAY-ree-uh]
Named for brothers Romulo and Numa Pompilio Escobar, of Mexico City (late 1800s to mid 1900s).

minima [MIN-eh-muh] Very small.

sneedii [SNEED-ee-eye] Named for J.R. Sneed, who collected in the plant in the early 20th century.

vivipara [vy-VIP-ar-uh] Live bearer; bears live young.

SUCCULENT

brittonii [brit-TON-ee-eye]
Named for Nathaniel Lord Britton, or his wife Elizabeth Gertrude (Knight) Britton; both were early 20th century botanists.

caespitosa [kess-pi-TOH-suh] Tufted.

Cotyledon [kot-EE-lee-don] Joint socket, cavity.

Dudleya [DUD-lee-yuh] Named for William Russel Dudley, 19th century botany professor at Stanford University in California (U.S.).

edulis [ED-yew-liss] Edible.

farinosa [far-ih-NOH-suh] Mealy or powdery.

gnoma [NOHM-uh] Dwarf.

lanceolata [lan-see-oh-LAY-tuh] Lance-shaped.

macrantha [ma-KRAN-tha] Large flowered.

orbiculata [or-bee-kul-AY-tuh] Round.

stolonifera [sto-lo-NIF-er-uh] Bearing runners.

tomentosa [toh-men-TOH-suh] Covered with fine, matted hairs.

virens [VEER-enz] Green.

<https://davesgarden.com/guides/botanary>



Virtual Mini-Show: CACTUS/NOVICE

CACTUS CATEGORY: NOVICE



Tephrocactus
by Sonita Bontad



Mammillaria melanocentra
by Terri Straub



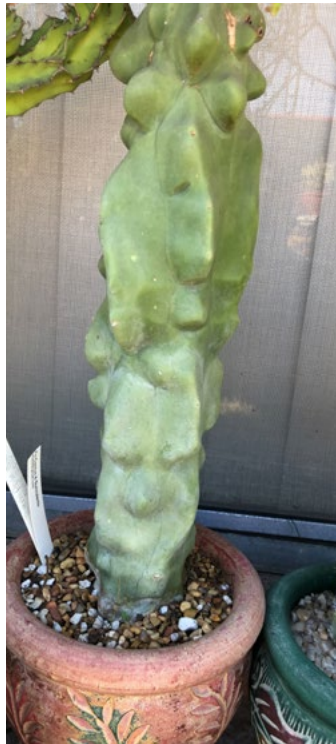
Flowering Gymnocalycium
by Sonita Bontad



Ferocactus cylindraceus
by Clif Wong



Mammillaria spinosissima
by Jim Tanner



Pachycereus schotti var. monstrose
by Sonita Bontad



Mammillaria
by Sonita Bontad



Mammillaria elongata f. cristata
by Sue Wong



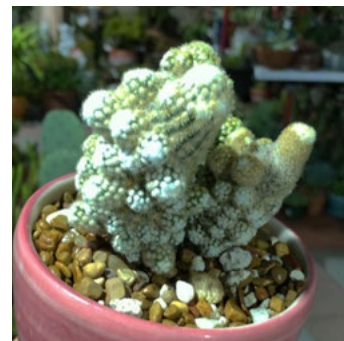
Lobivia pentlandii
by Sue Wong



Gymnocalycium
by Sonita Bontad



Flowering pole cactus
by John Nisewaner



Kroenleinia=Echinocactus
grusonii f. Monstrose by Sonita
Bontad



Oreocereus trolli and
Austrocyllindropuntia vestita
by Clif Wong



Crested grafted cactus
by Sonita Bontad



Virtual Mini-Show: SUCCULENT/NOVICE

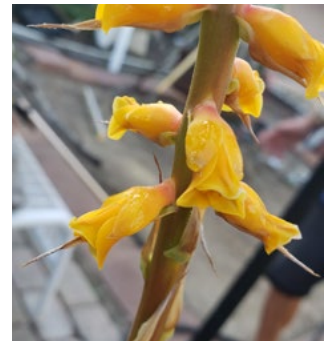
SUCCULENT CATEGORY: NOVICE



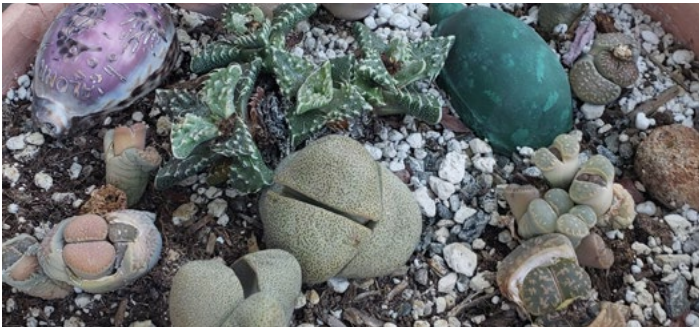
Sansevieria
by Sonita Bontad



Hechtia
by John Nisewaner



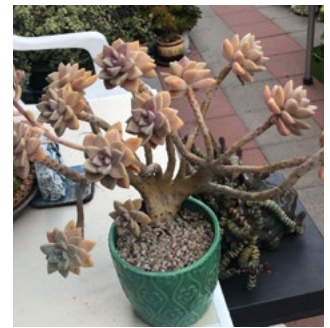
Hechtia flower
by John Nisewaner



Lithops Dish Garden
by John Nisewaner



Pelargonium carnosum
by M.A. Bjarkman



Graptopetalum paraguayense
by Sonita Bontad



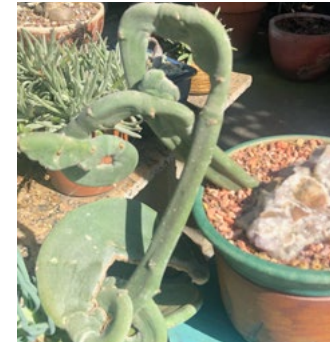
Fockea edulis
by M.A. Bjarkman



Aloe ferox
by Terri Straub



Deuterocohnia brevifolia
by John Nisewaner



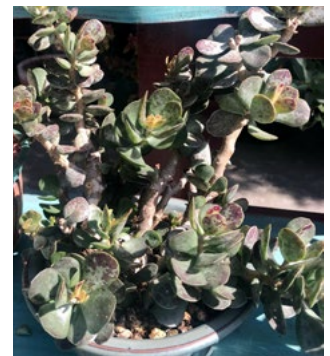
Pedilanthus macrocarpus
by M.A. Bjarkman



Monanthes polyphylla
by John Nisewaner



Aeonium 'Starburst'
by Sonita Bontad



Adromischus macrocarpus
by M.A. Bjarkman



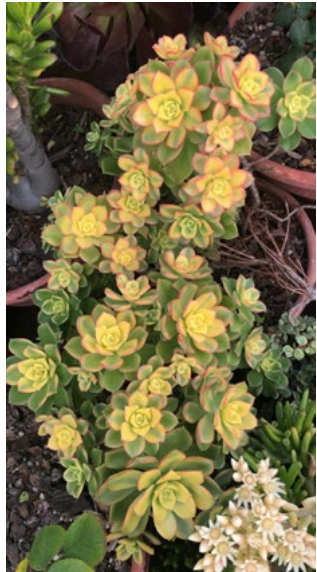
APRIL

Virtual Mini-Show: **SUCCULENT/NOVICE**

SUCCULENT CATEGORY: NOVICE



Adromischus cooperi
by Sonita Bontad



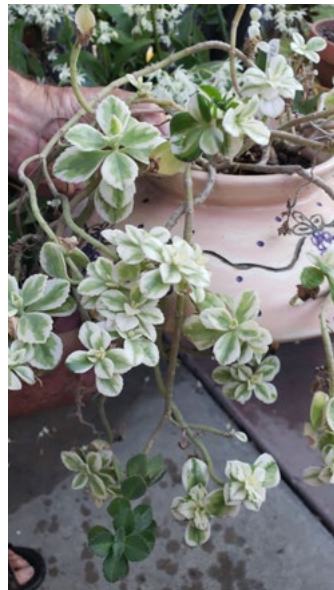
Aeonium kiwi
by Sonita Bontad



Agave albopilosa (~5years old)
by Jim Tanner



Faucaria tuberculosa
by Clif Wong



Plectranthus variegated
by John Nisewaner



Flowering Euphorbia
by Sonita Bontad



APRIL

Virtual Mini-Show: **SUCCULENT / INTERMEDIATE**

SUCCULENT CATEGORY: INTERMEDIATE



Euphorbia mammillaris
by Anita Caplan



Euphorbia flanagani
by Mike Short



Dudleya hybrid
by Bernard Johnson



Dudleya farinosa
by Anita Caplan



Agave desmetiana
by Mike Short



Agave 'Kara's Stripes'
by Mike Short



APRIL

Virtual Mini-Show: **CACTUS/INTERMEDIATE**

CACTUS CATEGORY: INTERMEDIATE



Mammillaria plumosa
by Bernard Johnson



Leuchtenbergia principis
by Bernard Johnson



Aylosteria fulviseta
by Bernard Johnson



Virtual Mini-Show: **CACTUS/OPEN**

CACTUS CATEGORY: OPEN



Rebutia 'Pastel Pink'
by Phyllis De Crescenzo



Notocactus wernerii
by Phyllis De Crescenzo



Mammillaria spinosissima
by Phyllis De Crescenzo



Mammillaria mystax
by Phyllis De Crescenzo



Mammillaria magnifica
by Laurel Woodley



Lobivia longispina
by Maria Capaldo



Lobivia drexleriana
by Maria Capaldo



Echinopsis scopulicola
by Phyllis De Crescenzo



Copiapoa hypogaea
by Maria Capaldo



APRIL

Virtual Mini-Show: **SUCCULENT/OPEN**

SUCCULENT CATEGORY: OPEN



Sansevieria trifasciata variegata
by Phyllis DeCrescenzo



Pachyphytum oviferum
by Phyllis De Crescenzo



Oxalis gigantea
by Laurel Woodley



Kalanchoe tomentosa
by Maria Capaldo



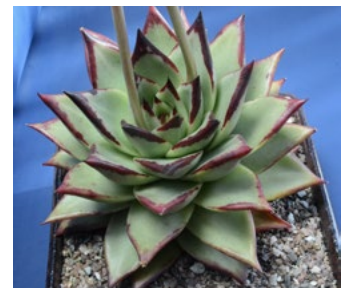
Ficus palmieri
by Laurel Woodley



Euphorbia canariensis
by Jim Gardner



Echeveria derenbergii
by Phyllis De Crescenzo



Echeveria agavoides 'Ebony'
by Maria Capaldo



Aloe brevifolia
by Jim Gardner



Agave victoria-reginae compacta
by Maria Capaldo



Agave nickelsiae
by Jim Gardner



Aeonium 'Suncup'
by Jim Gardner



Aeonium 'Jack Catlin'
by Jim Gardner

APRIL

SCSS Mini-Show 2021 Standings

[Click here for sortable standings](#)

Novice Class	Cactus	Succulents	Total	Intermediate Class	Cactus	Succulents	Total	Open Class	Cactus	Succulents	Total
Bantad, Sonia	1	3	4	Caplan, Anita	1	7	8	Capaldo, Maria	3	5	8
Bjarkman, M.A.	2	4	6	Johnson, Bernard	3	5	8	DeCrescenzo, Phyllis	3	5	8
Davis, Gretchen	3	3	6	LaForest, Dale	0	4	4	Duke, Gary	3	3	6
Nisewaner, John	1	1	2	Short, Mike	2	6	8	Fasteau, Sally	2	4	6
Straub, Terri	4	4	8					Gardner, Jim	1	7	8
Tanner, Jim	3	5	8					Wilk, William	0	2	2
Tillotson, Joe	1	5	6					Woodley, Laurel	4	4	8
Wong, Clif	1	1	2								
Wong, Sue	0	2	2								
Zedler, Cory	0	2	2								

Mini-show Virtual Points

One (1) Mini show point each for a submitted photo of your cactus and succulent (up to 2 points)

Up to two (2) points for those submitting garden photos if you had **not** submitted Mini-show photos.



Upcoming Events

[Click here for Full List](#)



SOUTH COAST
CACTUS & SUCCULENT
SOCIETY

ZOOM MEETING

**Getting to Know
Kalanchoe**

Sunday, May 9, 2021

Join the zoom meeting:

<https://us02web.zoom.us/j/84796271402?pwd=SVRzZ2Y3VjFwZW0zRm5UbHRzY3JhQT09>

Speakers:

LAUREL WOODLEY

Start time:

1:00 pm meeting

1:30 pm presentation



Check all events as they may have been

CANCELLED

[For more information and to learn more](#)

2021 Board of Directors

OFFICERS:

President

Maria Capaldo

Vice President

M.A. Bjarkman

Secretary

Sue Wong

Treasurer

Bernard Johnson

AT LARGE BOARD
MEMBERS:

Terri Straub

Clif Wong

Corey Zedler



STANDING
COMMITTEE CHAIRS:

Communications

Mike Short

Finance

Jim Hanna

Membership

Sally Fasteau

Programs

Gary Duke

Show and Sale

Open



COMMITTEE
MEMBERS (TASKED):

Mini-Show Coordinator

Jim Tanner

Publicity (Show)

Open

Publicity (Monthly)

Ann Nye

Speaker Coordinator

Jade Neely



LIAISONS:

CGCI

Lou Hagemeyer

CSSA

M.A. Bjarkman

OTHER POSITIONS:

Facebook

Laurel Woodley

Instagram

Caitlin Rubia

Hospitality/Refreshments
Volunteers

Newsletter

Clif Wong

Webmaster

Mike Short

Plant Man

Jim Hanna

