

# ARACEAE of the “Estación Científica San Francisco”

Southeastern Ecuador, Zamora-Chinchipe, moist forest at 1800-2500 m elevation. Epiphytic habit (\*)

Florian A. Werner & Glenda Mendieta-Leiva

Functional Ecology, University of Oldenburg, Germany

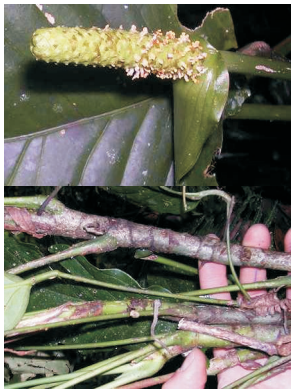
Thanks to Thomas Croat for identifications

Photos, production & copyright ©: G. Mendieta-Leiva [glendamendieta at gmail.com] & F. A. Werner [florianwerner at yahoo.com]

629 version I  
07/2014



*Anthurium amoenum*



*Anthurium amoenum*



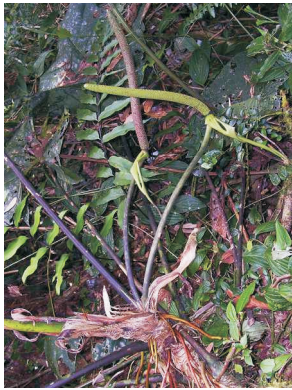
*Anthurium breviscapum*  
(\*)



*Anthurium breviscapum*  
(\*)



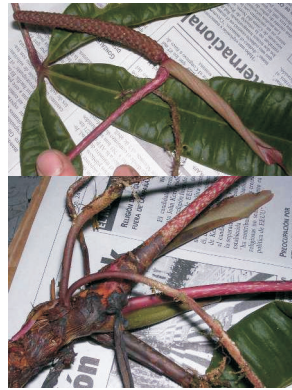
*Anthurium coripatense*



*Anthurium coripatense*



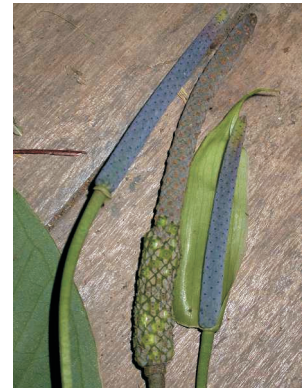
*Anthurium cutucuense*



*Anthurium cutucuense*



*Anthurium dolichocnemum*



*Anthurium dolichocnemum*



*Anthurium effusipathum*



*Anthurium effusipathum*



*Anthurium harlingianum*  
(\*)



*Anthurium harlingianum*  
(\*)



*Anthurium lingua*  
(\*)



*Anthurium lingua*  
(\*)



*Anthurium mendietae*  
(\*)



*Anthurium microspadix*



*Anthurium microspadix*



*Anthurium mindense*

# ARACEAE of the “Estación Científica San Francisco”

Southeastern Ecuador, Zamora-Chinchipe, moist forest at 1800-2500 m elevation. Epiphytic habit (\*)

Florian A. Werner & Glenda Mendieta-Leiva

Functional Ecology, University of Oldenburg, Germany

Thanks to Thomas Croat for identifications

Photos, production & copyright ©: G. Mendieta-Leiva [glendamendieta at gmail.com] & F. A. Werner [florianwerner at yahoo.com]

2

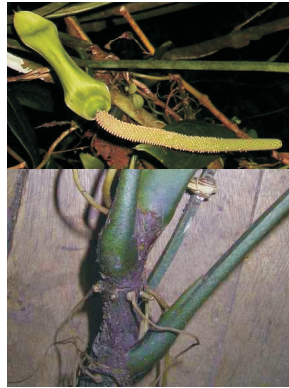
629 version I  
07/2014



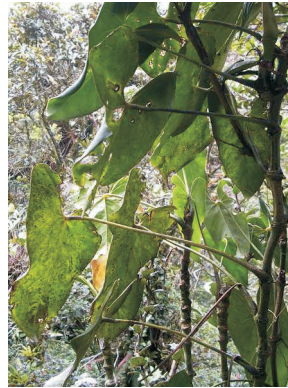
*Anthurium mindense*



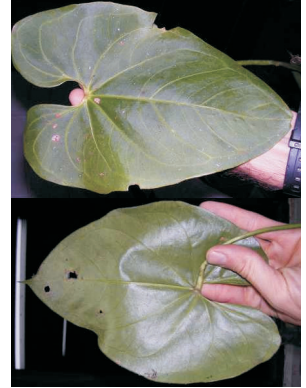
*Anthurium moronense*  
(\*)



*Anthurium moronense*  
(\*)



*Anthurium nigrescens*



*Anthurium nigrescens*



*Anthurium ovatifolium*  
U. Soltau



*Anthurium ovatifolium*



*Anthurium penningtonii*



*Anthurium penningtonii*



*Anthurium pyriforme*  
(\*)



*Anthurium pyriforme*  
(\*)



*A. scandens* var. *pusilla*  
(\*)



*A. scandens* var. *pusilla*  
(\*)



*A. scandens* var. *scandens*  
(\*)



*Anthurium bogneri*  
(\*)



*Anthurium* sp. *nova*



*Anthurium* sp. *nova*



*A. sp. nova* sect. *xialophyllum*



*Anthurium stephanii*  
(\*)



*Anthurium stephanii*  
(\*)

# ARACEAE of the “Estación Científica San Francisco”

Southeastern Ecuador, Zamora-Chinchipe, moist forest at 1800-2500 m elevation. Epiphytic habit (\*)

Florian A. Werner & Glenda Mendieta-Leiva

Functional Ecology, University of Oldenburg, Germany

Thanks to Thomas Croat for identifications

Photos, production & copyright ©: G. Mendieta-Leiva [glendamendieta at gmail.com] & F. A. Werner [florianwerner at yahoo.com]

3

629 version I  
07/2014



**Anthurium triphyllum**



**Anthurium triphyllum**



**Anthurium variegatum**



**Anthurium variegatum**



**Anthurium versicolor**



**Anthurium versicolor**



**Anthurium versicolor**



**Anthurium weneri**  
(\*)



**Anthurium weneri**  
(\*)



**Anthurium FW2879**



**Anthurium FW2879**



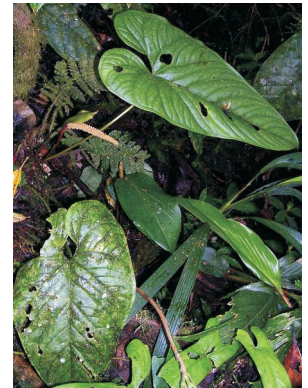
**Anthurium FW1437**



**Anthurium FW1380**



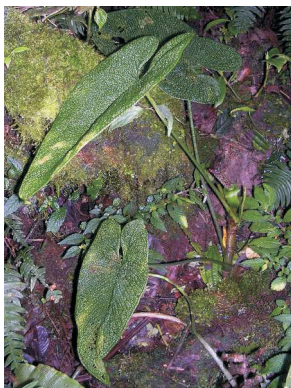
**Anthurium FW1380**



**Anthurium FW1267**



**Anthurium FW1267**



**Anthurium FW1602**



**Anthurium FW1602**



**Anthurium FW1602**



**Anthurium FW1437**

# ARACEAE of the “Estación Científica San Francisco”

Southeastern Ecuador, Zamora-Chinchipe, moist forest at 1800-2500 m elevation. Epiphytic habit (\*)

Florian A. Werner & Glenda Mendieta-Leiva

Functional Ecology, University of Oldenburg, Germany

Thanks to Thomas Croat for identifications

Photos, production & copyright ©: G. Mendieta-Leiva [glendamendieta at gmail.com] & F. A. Werner [florianwerner at yahoo.com]

4

629 version I  
07/2014



**Anthurium FW1251**



**Anthurium FW1251**



**Anthurium FW1096**  
(\*)



**Anthurium FW1096**  
(\*)



**Anthurium FW1095**



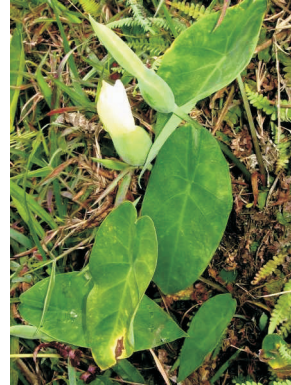
**Anthurium FW1095**



**Anthurium FW881**  
(\*)



**Anthurium FW729**



**Calladium steudneriifolium**



**Calladium steudneriifolium**



**Calladium steudneriifolium**



**Croatiella integrifolia**



**Croatiella integrifolia**



**Croatiella integrifolia**



**Philodendron acutifolium**  
(\*)



**Philodendron acutifolium**  
(\*)



**Philodendron asplundii**



**Philodendron asplundii**



**Philodendron ceronii**



**Philodendron ceronii**

# ARACEAE of the “Estación Científica San Francisco”

Southeastern Ecuador, Zamora-Chinchipe, moist forest at 1800-2500 m elevation. Epiphytic habit (\*)

Florian A. Werner & Glenda Mendieta-Leiva

Functional Ecology, University of Oldenburg, Germany

Thanks to Thomas Croat for identifications

Photos, production & copyright ©: G. Mendieta-Leiva [glendamendieta at gmail.com] & F. A. Werner [florianwerner at yahoo.com]

5

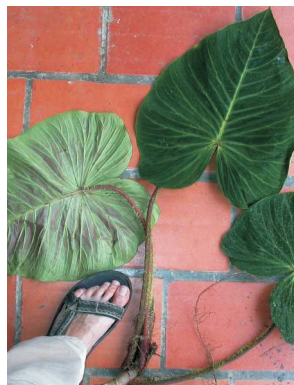
629 version I  
07/2014



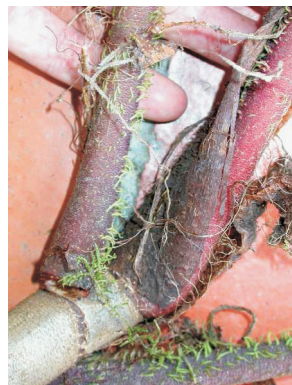
*Philodendron cf. ornatum*  
(\*)



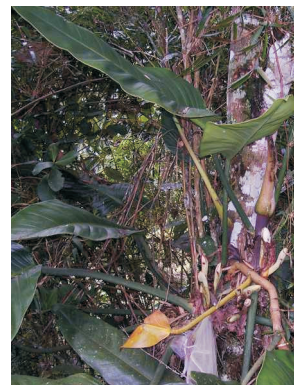
*Philodendron cf. ornatum*  
(\*)



*Philodendron cf. verrucosum*



*Philodendron cf. verrucosum*



*Philodendron cf. ruizi*  
(\*)



*Philodendron cf. ruizi*  
(\*)



*Philodendron strictum*



*Philodendron strictum*



*Philodendron FW2769*



*Philodendron FW2769*



*Philodendron FW2769*



*Philodendron FW2769*



*Philodendron FW2747*



*Philodendron FW2747*



*Philodendron FW1757*



*Philodendron FW1757*



*Philodendron FW1435*



*Philodendron FW1435*



*Philodendron FW1433*



*Philodendron FW1433*

# ARACEAE of the “Estación Científica San Francisco”

Southeastern Ecuador, Zamora-Chinchipe, moist forest at 1800-2500 m elevation. Epiphytic habit (\*)

Florian A. Werner & Glenda Mendieta-Leiva

Functional Ecology, University of Oldenburg, Germany

Thanks to Thomas Croat for identifications

Photos, production & copyright ©: G. Mendieta-Leiva [glendamendieta at gmail.com] & F. A. Werner [florianwerner at yahoo.com]

6

629 version I  
07/2014



Philodendron FW1212



Philodendron FW1212



Philodendron FW880



Philodendron FW880



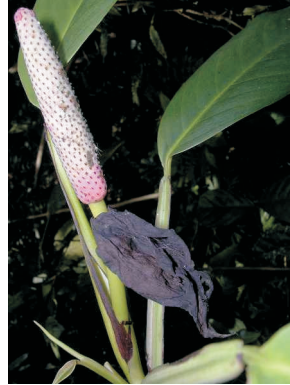
Rhodospatha latifolia



Rhodospatha latifolia



Rhodospatha sp. nova



Rhodospatha sp. nova



Stenospermatum FW1423  
(\*)



Stenospermatum FW1423  
(\*)



Stenospermatum FW1407



Stenospermatum FW1407



Stenospermatum FW1381



Stenospermatum FW1381



Stenospermatum FW1381



Xanthosoma hylaeae



Xanthosoma hylaeae



Xanthosoma hylaeae



Xanthosoma FW3078



Xanthosoma Fw3078