

Base 4 – Tucuruí Reservoir, Pará, BRAZIL

Fruits & Flowers eaten by Black-bearded Sakis (*Chiropotes satanas*)

1

Liza Maria Veiga

Emílio Goeldi Museum & Federal University of Pará

Photos by Veiga, L. M. Produced by: Juliana Philipp, R. Foster, T. Wachter. Support from: Ellen Hyndman Fund and Andrew Mellon Foundation. Thanks to Eletronorte S.A., CAPES, Primate Conservation Inc. and the Primate Society of Great Britain. And thanks to Juscelino Chaves and Luiz Alves for field assistance, and Manoel Cordeiro and Scott Mori for plant identification.

© Liza M. Veiga [lizaveiga@pitheciineactiongroup.org], Emílio Goeldi Museum & Federal University of Pará, Belém, Brazil.

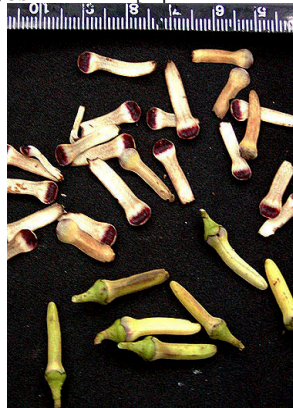
© ECCo, The Field Museum, Chicago, USA 60605. [http://fieldmuseum.org/IDtools]

[rrc@fieldmuseum.org]

Rapid Color Guide # 254 version 1 05/2012



1 *Duguetia* sp.
ANNONACEAE



2 *Xylopia nitida*
ANNONACEAE



3 *Xylopia nitida*
ANNONACEAE



4 *Aspidosperma auriculata*
APOCYNACEAE



5 *Aspidosperma eтанum*
APOCYNACEAE



6 *Aspidosperma eтанum*
APOCYNACEAE



7 *Geissospermum vellosi*
APOCYNACEAE



8 *Schefflera morototoni*
ARALIACEAE



9 *Oenocarpus bacaba*
ARALIACEAE



10 *Oenocarpus distichus*
ARECACEAE



11 *Arrabidaea cinnamomea*
BIGNONIACEAE



12 *Lindsaea lancea*
LINDSAEACEAE



13 *Arrabidaea mollicoma*
BIGNONIACEAE



14 *Cuspidaria* sp.
BIGNONIACEAE



15 *Memora magnifica*
BIGNONIACEAE



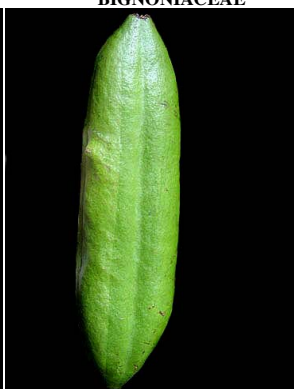
16 *Memora racemosa*
BIGNONIACEAE



17 *Mussatia* cf. *priorei*
BIGNONIACEAE



18 *Tanacetium nocturnum*
BIGNONIACEAE



19 *Tanacetium nocturnum*
BIGNONIACEAE



20 *Tanacetium nocturnum*
BIGNONIACEAE

Base 4 – Tucuçu Reservoir, Pará, BRAZIL

Fruits & Flowers eaten by Black-bearded Sakis (*Chiropotes satanas*)

Liza Maria Veiga

Emílio Goeldi Museu & Federal University of Pará

Photos by Veiga, L.M. Produced by: Juliana Philipp, R. Foster, T. Wachter. Support from: Ellen Hyndman Fund and Andrew Mellon Foundation. Thanks to Eletronorte S.A., CAPES, Primate Conservation Inc. and the Primate Society of Great Britain. And Thanks to Juscelino Chaves and Luiz Alves for field assistance, and Manoel Cordeiro and Scott Mori for plant identification.

© Liza M. Veiga [lizaveiga@pitheciineactiongroup.org], Emílio Goeldi Museum & Federal University of Pará, Belém, Brazil.

© ECCo, The Field Museum, Chicago, USA 60605. [http://fieldmuseum.org/IDtools]

[rrc@fieldmuseum.org]

Rapid Color Guide # 254 version 1 05/2012



indet sp. 1
BIGNONIACEAE



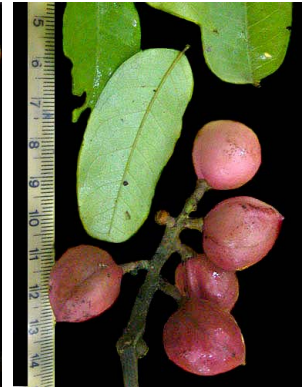
indet sp. 2
BIGNONIACEAE



23 *Protium apiculatum*
BURSERACEAE



24 *Protium apiculatum*
BURSERACEAE



25 *Protium aracouchini*
BURSERACEAE



26 *Protium heptaphyllum*
BURSERACEAE



27 *Protium robustum*
BURSERACEAE



28 *Protium robustum*
BURSERACEAE



29 *Protium sagotianum*
BURSERACEAE



30 *Tetragastris altissima*
BURSERACEAE



31 *Tetragastris altissima*
BURSERACEAE



32 *Tetragastris panamensis*
BURSERACEAE



33 *Couepia guianensis*
CHRYSOBALANACEAE



34 *Hirtella bicornis*
CHRYSOBALANACEAE



35 *Hirtella bicornis*
CHRYSOBALANACEAE



36 *Hirtella ciliata*
CHRYSOBALANACEAE



37 *Hirtella eriandra*
CHRYSOBALANACEAE



38 *Licania canescens*
CHRYSOBALANACEAE



39 *Licania heteromorpha*
CHRYSOBALANACEAE



40 *Licania kunthiana*
CHRYSOBALANACEAE

Base 4 – Tucuruí Reservoir, Pará, BRAZIL

Fruits & Flowers eaten by Black-bearded Sakis (*Chiropotes satanas*)

Liza Maria Veiga

Emílio Goeldi Museum & Federal University of Pará

Photos by L.M. Veiga. Produced by: Juliana Philipp, R. Foster, T. Wachter. Support from: Ellen Hyndman Fund and Andrew Mellon Foundation. Thanks to Eletronorte S.A., CAPES, Primate Conservation Inc. and the Primate Society of Great Britain. Also, thanks to Juscelino Chaves and Luiz Alves for field assistance, and Manoel Cordeiro and Scott Mori for plant identification.
 © Liza M. Veiga [lizaveiga@pitheciineactiongroup.org], Emílio Goeldi Museum & Federal University of Pará, Belém, Brazil.
 © ECCO, The Field Museum, Chicago, USA 60605. [http://fieldmuseum.org/IDtools] [rrc@fieldmuseum.org]

Rapid Color Guide # 254 version 1 05/2012



41 *Garcinia macrophylla*
CLUSIACEAE



42 *Tovomita choisyana*
CLUSIACEAE



43 *Tovomita choisyana*
CLUSIACEAE



44 *Combretum jacquinii*
COMBRETACEAE



45 *Rourea doniana*
CONNARACEAE



46 *Cayaponia cruegeri*
CUCURBITACEAE



47 *Cayaponia tubulosa*
CUCURBITACEAE



48 *Cayaponia tubulosa*
CUCURBITACEAE



49 *Cayaponia* sp. 1
CUCURBITACEAE



50 *Cayaponia* sp. 1
CUCURBITACEAE



51 *Doliocarpus major*
DILLENIACEAE



52 *Tetracera* sp.
DILLENIACEAE



53 *Tetracera* sp.
DILLENIACEAE



54 *Sloanea guianensis*
ELAEOCARPACEAE



55 *Sloanea guianensis*
ELAEOCARPACEAE



56 *Sloanea guianensis*
ELAEOCARPACEAE



57 *Manihot esculenta*
EUPHORBIACEAE



58 *Sagotia racemosa*
EUPHORBIACEAE



59 *Bauhinia coronata*
FABACEAE - CAESALPINIACEAE



60 *Bauhinia coronata*
FABACEAE - CAESALPINIACEAE

Base 4 – Tucuruí Reservoir, Pará, BRAZIL

Fruits & Flowers eaten by Black-bearded Sakis (*Chiropotes satanas*)

Liza Maria Veiga

Emílio Goeldi Museum & Federal University of Pará

Photos by L.M. Veiga. Produced by: Juliana Philipp, R. Foster, T. Wachter. Support from: Ellen Hyndman Fund and Andrew Mellon Foundation. Thanks to Eletronorte S.A., CAPES, Primate Conservation Inc. and the Primate Society of Great Britain. Juscelino Chaves and Luiz Alves for field assistance, and Manoel Cordeiro and Scott Mori for plant identification.

© Liza M. Veiga [lizaveiga@pitheciineactiongroup.org], Emílio Goeldi Museum & Federal University of Pará, Belém, Brazil.

© ECCo, The Field Museum, Chicago, USA 60605.

[<http://fieldmuseum.org/IDtools>]

[rrc@fieldmuseum.org]

Rapid Color Guide # 254 version 1 05/2012



61 *Bauhinia guianensis*
FABACEAE - CAESALPINIACEAE



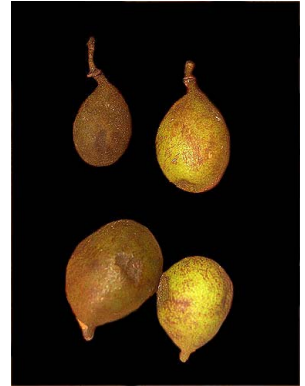
62 *Bauhinia rutilans*
FABACEAE - CAESALPINIACEAE



63 *Copaifera duckei*
FABACEAE - CAESALPINIACEAE



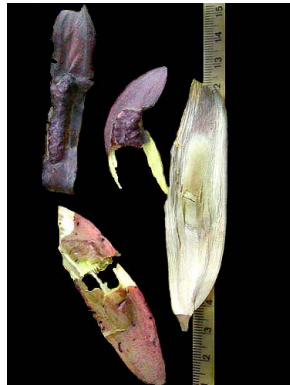
64 *Dialium guianense*
FABACEAE - CAESALPINIACEAE



65 *Dialium guianense*
FABACEAE - CAESALPINIACEAE



66



67 *Sclerolobium guianense*
FABACEAE - CAESALPINIACEAE



68 *Vouacapoua americana*
FABACEAE - CAESALPINIACEAE



69 *Vouacapoua americana*
FABACEAE - CAESALPINIACEAE



70 *Abarema cochleata*
FABACEAE - MIMOSACEAE



71 *Abarema cochleata*
FABACEAE - MIMOSACEAE



72 *Abarema jupunba*
FABACEAE - MIMOSACEAE



73 *Abarema jupunba*
FABACEAE - MIMOSACEAE



74 *Acacia multipinnata*
FABACEAE - MIMOSACEAE



75 *Acacia rufescens*
FABACEAE - MIMOSACEAE



76 *Enterolobium schomburgkii*
FABACEAE - MIMOSACEAE



77 *Inga alba*
FABACEAE - MIMOSACEAE



78 *Inga capitata*
FABACEAE - MIMOSACEAE



79 *Inga flagelliformis*
FABACEAE - MIMOSACEAE



80 *Inga thibaudiana*
FABACEAE - MIMOSACEAE

Base 4 – Tucuruí Reservoir, Pará, BRAZIL

Fruits & Flowers eaten by Black-bearded Sakis (*Chiropotes satanas*)

Liza Maria Veiga

Emílio Goeldi Museum & Federal University of Pará

Photos by L.M. Veiga. Produced by: Juliana Philipp, R. Foster, T. Wachter. Support from: Ellen Hyndman Fund and Andrew Mellon Foundation. Thanks to Eletronorte S.A., CAPES, Primate Conservation Inc. and the Primate Society of Great Britain. Juscelino Chaves and Luiz Alves for field assistance, and Manoel Cordeiro and Scott Mori for plant identification.

© Liza M. Veiga [lizaveiga@pitheciineactiongroup.org], Emílio Goeldi Museum & Federal University of Pará, Belém, Brazil.

© ECCO, The Field Museum, Chicago, USA.

[http://fieldmuseum.org/IDtools]

[rrc@fieldmuseum.org]

Rapid Color Guide # 254 version 1 05/2012



81 *Inga thibaudiana*
FABACEAE - MIMOSACEAE



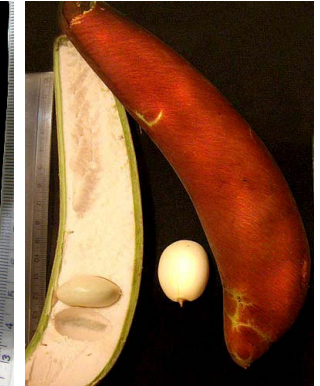
82 *Stryphnodendron microstachyum*
FABACEAE - MIMOSACEAE



83 *Zygia racemosa*



84 *Alexa grandiflora*
FABACEAE - PAPILIONACEAE



85 *Alexa grandiflora*
FABACEAE - PAPILIONACEAE



86 *Swartzia arborescens*
FABACEAE - PAPILIONACEAE



87 *Swartzia racemosa*
FABACEAE - PAPILIONACEAE



88 *Swartzia racemosa*
FABACEAE - PAPILIONACEAE



89 *Zollernia paraensis*
FABACEAE - PAPILIONACEAE



90 *Zollernia paraensis*
FABACEAE - PAPILIONACEAE



91



92 *Endopleura uchi*
HUMIRIACEAE



93 *Endopleura uchi*
HUMIRIACEAE



94 *Sacoglottis guianensis*
HUMIRIACEAE



95 *Sacoglottis guianensis*
HUMIRIACEAE



96 *Aniba canelilla*
LAURACEAE



97 *Aniba canelilla*
LAURACEAE



98 *Bertholletia excelsa*
LECYTHIDACEAE



99 *Couratari guianensis*
LECYTHIDACEAE



100 *Couratari oblongifolia*
LECYTHIDACEAE

Base 4 – Tucuruí Reservoir, Pará, BRAZIL

Fruits & Flowers eaten by Black-bearded Sakis (*Chiropotes satanas*)

Liza Maria Veiga

Emílio Goeldi Museum & Federal University of Pará

Photos by L.M. Veiga. Produced by: Juliana Philipp, R. Foster, T. Wachter. Support from: Ellen Hyndman Fund and Andrew Mellon Foundation. Thanks to Eletronorte S.A., CAPES, Primate Conservation Inc. and the Primate Society of Great Britain. Juscelino Chaves and Luiz Alves for field assistance, and Manoel Cordeiro and Scott Mori for plant identification.

© Liza M. Veiga [lizaveiga@pitheciineactiongroup.org], Emílio Goeldi Museum & Federal University of Pará, Belém, Brazil.
 © ECCO, The Field Museum, Chicago, USA. [http://fieldmuseum.org/IDtools] [rrc@fieldmuseum.org]

Rapid Color Guide # 254 version 1 05/2012



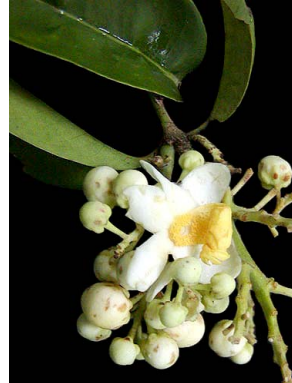
101 *Eschweilera coriacea*
LECYTHIDACEAE



102 *Eschweilera coriacea*
LECYTHIDACEAE



103 *Eschweilera pedicellata*
LECYTHIDACEAE



104 *Eschweilera subglandulosa*
LECYTHIDACEAE



105 *Eschweilera subglandulosa*
LECYTHIDACEAE



106 *Gustavia augusta*



107 *Gustavia augusta*



108 *Lecythis corrugata*



109



110 *Dicella macroptera*



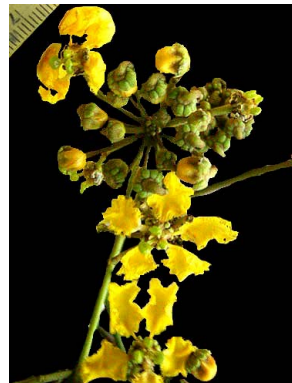
111 *Mascagnia sepium*



112 *Mascagnia sepium*



113 *Stigmaphyllon palmatum*



114 *Stigmaphyllon palmatum*



115



116 *Tetrapteryx sp. 1*



117



118



119



120 *Norantea guianensis*

Base 4 – Tucuruí Reservoir, Pará, BRAZIL

Fruits & Flowers eaten by Black-bearded Sakis (*Chiropotes satanas*)

Liza Maria Veiga

Emílio Goeldi Museum & Federal University of Pará

Photos by L.M. Veiga. Produced by: Juliana Philipp, R. Foster, T. Wachter. Support from: Ellen Hyndman Fund and Andrew Mellon Foundation. Thanks to Eletronorte S.A., CAPES, Primate Conservation Inc. and the Primate Society of Great Britain. Juscelino Chaves and Luiz Alves for field assistance, and Manoel Cordeiro and Scott Mori for plant identification.

© Liza M. Veiga [lizaveiga@pitheciineactiongroup.org], Emílio Goeldi Museum & Federal University of Pará, Belém, Brazil.
© ECCO, The Field Museum, Chicago, USA. [http://fieldmuseum.org/IDtools] [rre@fieldmuseum.org]

Rapid Color Guide # 254 version 1 05/2012



121 *Norantea guianensis*
MALPIGHIACEAE



122 *Bellucia grossularioides*
MELASTOMATACEAE



123 *Trichilia lecointei*
MELIACEAE



124 *Trichilia quadrijuga*
MELIACEAE



125 *Trichilia septentrionalis*
MELIACEAE



126 *Trichilia lecointei*
MELIACEAE



127 *Trichilia surinamensis*
MENISPERMACEAE



128 *Telitoxicum minutiflorum*
MENISPERMACEAE



129 *Brosimum guianensis*
MORACEAE



130 *Brosimum lactescens*
MORACEAE



131 *Brosimum parinarioides*
MORACEAE



132 *Brosimum parinarioides*
MORACEAE



133 *Maquira sclerophylla*
MORACEAE



134 *Naucleopsis caloneura*
MORACEAE



135 *Naucleopsis ternstroemiiflora*
MORACEAE



136 *Perebea mollis*
MORACEAE



137 *Heisteria scandens*
OLACACEAE



138 *Heisteria scandens*
OLACACEAE



139 *Passiflora glandulosa*
PASSIFLORACEAE



140 *Passiflora glandulosa*
PASSIFLORACEAE

Base 4 – Tucuruí Reservoir, Pará, BRAZIL

Fruits & Flowers eaten by Black-bearded Sakis (*Chiropotes satanas*)

Liza Maria Veiga

Emílio Goeldi Museum & Federal University of Pará

Photos by L.M. Veiga. Produced by: Juliana Philipp, R. Foster, T. Wachter. Support from: Ellen Hyndman Fund and Andrew Mellon Foundation. Thanks to Eletronorte S.A., CAPES, Primate Conservation Inc. and the Primate Society of Great Britain. Juscelino Chaves and Luiz Alves for field assistance, and Manoel Cordeiro and Scott Mori for plant identification.

© Liza M. Veiga [lizaveiga@pitheciainactiongroup.org], Emílio Goeldi Museum & Federal University of Pará, Belém, Brazil.
 © ECCO, The Field Museum, Chicago, USA 60605. [http://fieldmuseum.org/IDtools] [rrc@fieldmuseum.org]

Rapid Color Guide # 254 version 1 05/2012



141 *Passiflora coccinea*
PASSIFLORACEAE



142 *Moutabea guianensis*
POLYGALACEAE



143 *Moutabea guianensis*
POLYGALACEAE



144 *Casearia ulmifolia*
SALICACEAE



145 *Casearia ulmifolia*
SALICACEAE



146 *Laetia procera*
SALICACEAE



147 *Cupania scrobiculata*
SAPINDACEAE



148 *Matayba arborescens*
SAPINDACEAE



149 *Paullinia pachycarpa*
SAPINDACEAE



150 *Paullinia pachycarpa*
SAPINDACEAE



151 *Paullinia* sp 1
SAPINDACEAE



152 *Paullinia* sp
SAPINDACEAE



153 *Paullinia* sp 2.
SAPINDACEAE



154 *Serjania paucidentata*
SAPINDACEAE



155 *Serjaniifolia* sp
SAPINDACEAE



156 *Talisia carinata*



157 *Talisia microcarpa*



158 *Chrysophyllum prieurii*
SAPOTACEAE



159 *Manilkara huberi*
SAPOTACEAE



160 *Manilkara huberi*
SAPOTACEAE

Fruits & Flowers eaten by Black-bearded Sakis (*Chiropotes satanas*)

Liza Maria Veiga

Emílio Goeldi Museum & Federal University of Pará

Photos by L.M. Veiga. Produced by: Juliana Philipp, R. Foster, T. Wachter. Support from: Ellen Hyndman Fund and Andrew Mellon Foundation. Thanks to Eletronorte S.A., CAPES, Primate Conservation Inc. and the Primate Society of Great Britain. Juscelino Chaves and Luiz Alves for field assistance, and Manoel Cordeiro and Scott Mori for plant identification.

© Liza M. Veiga [lizaveiga@pitheciineactiongroup.org], Emílio Goeldi Museum & Federal University of Pará, Belém, Brazil.

© ECCo, The Field Museum, Chicago, USA 60605

[http://fieldmuseum.org/IDtools]

[rre@fieldmuseum.org]

Rapid Color Guide # 254 version 1 05/2012



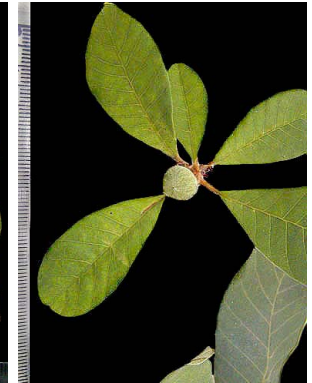
161 *Micropholis guyanensis*
SAPOTACEAE

162 *Micropholis venulosa*
SAPOTACEAE

163 *Passiflora coccinea*
SAPOTACEAE

164 *Pouteria bilocularis*
SAPOTACEAE

165 *Passiflora glandulosa*
SAPOTACEAE



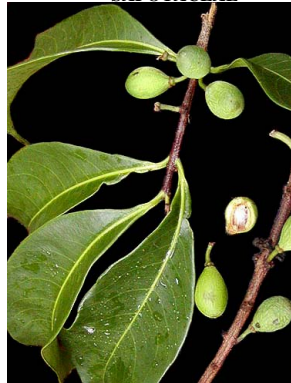
166 *Pouteria cladantha*
SAPOTACEAE

167 *Pouteria engleri*
SAPOTACEAE

168 *Pouteria engleri*
SAPOTACEAE

169 *Pouteria eugeniifolia*
SAPOTACEAE

170 *Pouteria hispida*
SAPOTACEAE



171 *Pouteria hispida*
SAPOTACEAE

172 *Pouteria oppositifolia*
SAPOTACEAE

173 *Pouteria oppositifolia*
SAPOTACEAE

174 *Pradosia* sp.
SAPOTACEAE

175 *Simarouba amara*
SIMAROUBACEAE



176 *Pourouma cecropiifolia*
URTICACEAE

177 *Pourouma cecropiifolia*
URTICACEAE

178 *Pouroumavelutina*
URTICACEAE

179 *Vochysia guianensis*
VOCHYSIACEAE

180 *Vochysia maxima*
VOCHYSIACEAE

Base 4 – Tucuruí Reservoir, Pará, BRAZIL
Fruits & Flowers eaten by **Black-bearded Sakis** (*Chiropotes satanas*)

Liza Maria Veiga

Emílio Goeldi Museum & Federal University of Pará

Photos by L.M. Veiga. Produced by: Juliana Philipp, R. Foster, T. Wachter. Support from: Ellen Hyndman Fund and Andrew Mellon Foundation. Thanks to Eletronorte S.A., CAPES, Primate Conservation Inc. and the Primate Society of Great Britain. Juscelino Chaves and Luiz Alves for field assistance, and Manoel Cordeiro and Scott Mori for plant identification.

© Liza M. Veiga [lizaveiga@pitheciineactiongroup.org], Emílio Goeldi Museum & Federal University of Pará, Belém, Brazil.

© ECCo, The Field Museum, Chicago, USA 60605. [http://fieldmuseum.org/IDtools] [rrc@fieldmuseum.org]

Rapid Color Guide # 254 version 1 05/2012



Black-bearded Saki Monkey (*Chiropotes satanas*)

Photo by Eduardo L. Pashoalini