

# LAO PEOPLE'S DEMOCRATIC REPUBLIC PLANTS of XE PIAN NATIONAL PROTECTED AREA

1

Bethany Elkington<sup>1,2</sup>, Kongmany Sydara<sup>3</sup>, Phaivanh Phiapalath<sup>4</sup>, and D. Doel Soejarto<sup>1,2</sup>

<sup>1</sup>University of Illinois at Chicago, <sup>2</sup>Field Museum of Natural History, <sup>3</sup>Institute of Traditional Medicine, <sup>4</sup>IUCN, Lao PDR.

Photos by Nichole I. Goodsmith and Vongtakoune Somsamouth. Produced by Bethany Elkington. Format by The Field Museum.

© Bethany Elkington [belkington@fieldmuseum.org], Kongmany Sydara, and Doel Soejarto.

[fieldguides.fieldmuseum.org]

[1259] version 1 7/2020



These images are from a medicinal plant documentation expedition to Xe Pian National Protected Area (NPA) of Southern Laos, which stretches about 2,400 km<sup>2</sup> between Champasak and Attapeu provinces and fluctuates from 150 m to 844 m above sea level. The park contains a wide variety of different habitats, ranging from dense primary/secondary forests to wetlands, giving home to a great diversity of plant and animal species. The expedition took place in July 2009, to identify medicinal plants used to improve livelihoods for local communities. [Elkington et al. *J Environ Biol.* 2014 (Jul), 35(4):607-15 for more information.] Collection numbers are provided for each species, following “bge...”



1 *Anomianthus dulcis*  
ANNONACEAE

ຕິນຕັງ *tin tang* bge124

2 *Uvaria rufa*  
ANNONACEAE

ເຄືອພິ້ວວນ *keuah pii pouan*  
bge132

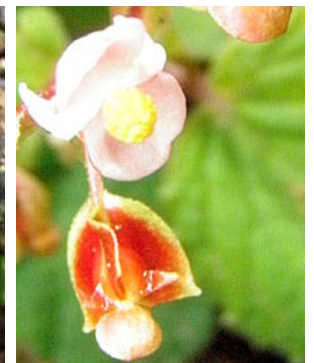


2 *Uvaria rufa*  
ANNONACEAE

3 *Cleghornia malaccensis*  
APOCYNACEAE

ເຄືອເອັນອ່ອນ *keuah ehn ohn* bge128

4 *Holarrhena curtisii*  
APOCYNACEAE



4 *Holarrhena curtisii*  
APOCYNACEAE

ມຸກຕ້ອຍ *mouk tia* bge227

5 *Begonia sinuata*  
BEGONIACEAE

ສົມກົບ *som kohp* bge213



PLANTS of XE PIAN NATIONAL PROTECTED AREA

Bethany Elkington<sup>1,2</sup>, Kongmany Sydara<sup>3</sup>, Phaivanh Phiapalath<sup>4</sup>, and D. Doel Soejarto<sup>1,2</sup>

<sup>1</sup>University of Illinois at Chicago, <sup>2</sup>Field Museum of Natural History, <sup>3</sup>Institute of Traditional Medicine, <sup>4</sup>IUCN, Lao PDR.

Photos by Nichole I. Goodsmith and Vongtakoune Somsamouth. Produced by Bethany Elkington. Format by The Field Museum.  
© Bethany Elkington [belkington@fieldmuseum.org], Kongmany Sydara, and Doel Soejarto.

[fieldguides.fieldmuseum.org]

[1259] version 1 7/2020



6 *Combretum quadrangulare*  
COMBRETACEAE

ກົກແກ *kohk kay* bge206

7 *Trichosanthes rubriflos*  
CUCURBITACEAE

ເຄືອໝາກຂີ້ກາ *keuah mak khi ka*  
bge129



7 *Trichosanthes rubriflos*  
CUCURBITACEAE

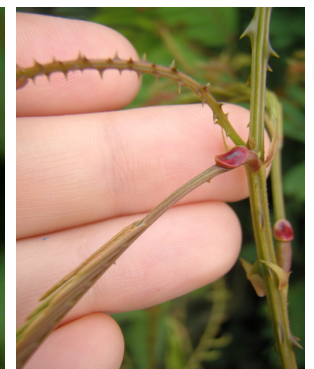
8 *Croton kongensis*  
EUPHORBIACEAE

ກົກຊ້າຫລອດ *kohk sa loht* bge237



9 *Entada reticulata*  
FABACEAE-MIMOSEAE

ໝາກບ້າລາຍ *mak balai* bge212



10 *Senegalia pennata*  
FABACEAE-MIMOSEAE

ຜັກຂະ *pak keh* bge201



# LAO PEOPLE'S DEMOCRATIC REPUBLIC PLANTS of XE PIAN NATIONAL PROTECTED AREA

Bethany Elkington<sup>1,2</sup>, Kongmany Sydara<sup>3</sup>, Phaivanh Phiapalath<sup>4</sup>, and D. Doel Soejarto<sup>1,2</sup>

<sup>1</sup>University of Illinois at Chicago, <sup>2</sup>Field Museum of Natural History, <sup>3</sup>Institute of Traditional Medicine, <sup>4</sup>IUCN, Lao PDR.  
Photos by Nichole I. Goodsmith and Vongtakoune Somsamouth. Produced by Bethany Elkington. Format by The Field Museum.  
© Bethany Elkington [belkington@fieldmuseum.org], Kongmany Sydara, and Doel Soejarto. [fieldguides.fieldmuseum.org] [1259] version 1 7/2020



11

*Moringa oleifera*  
MORINGACEAE



ຕົ້ນຜັກອີຮຸມ tohn pak ii houm

bge133



12 *Hedyotis microsepala*  
RUBIACEAE



12 *Hedyotis microsepala*  
RUBIACEAE



ຫຍ້າມຸ້ງກະຕ່າອ



*nya moung ka tai* bge205



13 *Tarenna disperma*  
RUBIACEAE



ເຂັມຈ້າງ khem sang bge207



14 *Phyllanthus reticulatus*  
PHYLLANTHACEAE



ຕັງຕີບ tang teep bge181, 203



15

*Mussaenda dinhensis*  
RUBIACEAE



ຕັງເບີຕົ້ນ tang beu tohn  
bge130



15 *Mussaenda dinhensis*  
RUBIACEAE



ຕັງເບີຕົ້ນ tang beu tohn  
bge130



16 *Clausena guillauminii*  
RUTACEAE



ສ່ອງຜ້າ song fa bge232

