





# STATE FOOTBALL CENTRE QUEENS PARK LANDSCAPE ARCHITECTURE RESPONSE

## CONTENTS

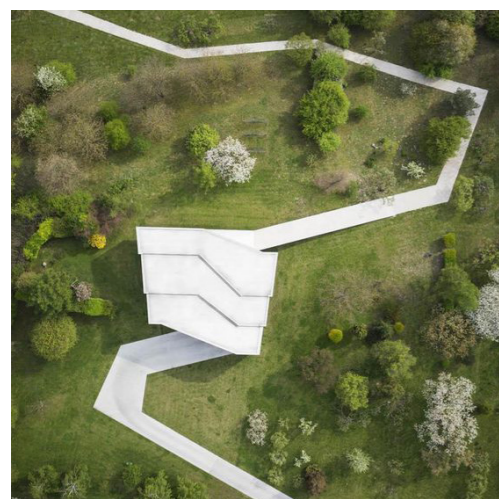
DESIGN PRINCIPLES	3
MASTERPLAN	4
INDICATIVE SECTIONS	5
PLANTING PALETTE	6

This document may only be used for the purpose for which it was commissioned in accordance with the Terms of Engagement.

### Document Status

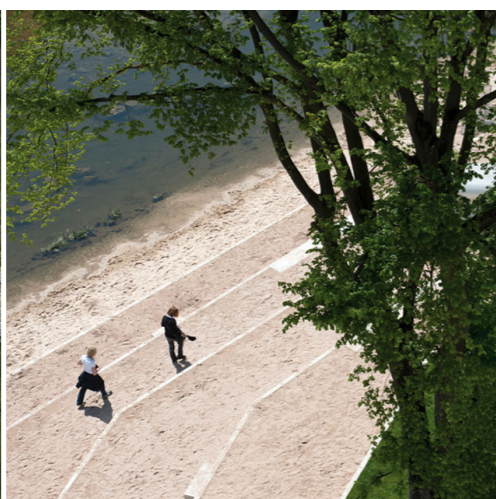
Date of issue	Rev No.	Reason for Issue	Author	Reviewed By	Approved by
8/12/2020	B	ISSUE FOR DA	AW	PV	PV





ECOLOGICAL FRAME

- Create a world class sporting facility in a bushland setting
- A perimeter loop that sets a frame of integration for the State Football Centre with its surrounds
- Celebrate the particular natural history of the site to distill a defined 'character'
- Protect and enhance the existing bushland (flora, fauna, soils and hydrology)
- A path network that sets ground levels to protect exiting soil of the surrounding Bush Forever and Protected Ecological Community (PEC) sites



EPHEMERAL WATER

- Evaluate, reveal and celebrate the local context and cultural heritage significance through understanding of the sites water story
- Retention and restoration of damplands, and establishment of ephemeral water features through the site to replicate the natural hydrology
- Increase water quality and ecosystem value
- Application of water harvesting and treatment strategies throughout the site



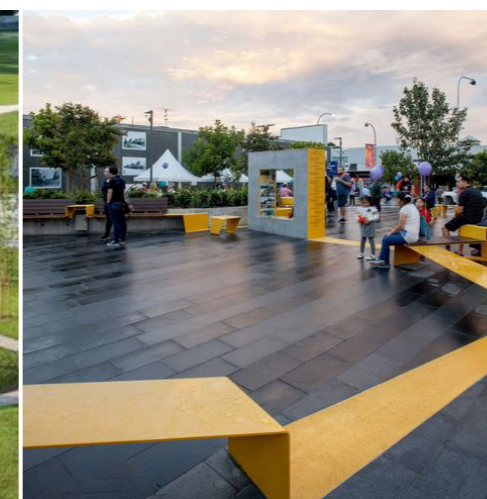
VEGETATION RESPONSE

- Interpret the sites unique 'water story' through vegetation, colour and texture
- Vegetation response is base on soil type and soil moisture (damp, moist and dry)
- Integrate the effects of seasonal variations in water and vegetation response to the climatic conditions
- Enhancement the connection between protected ecological communities and the bush forever sites



KEY LINKAGES & SIGHT LINES

- Key elements within the precinct focus on pedestrian connectivity, view corridors, social cohesion, and active wellness
- Establish programs to link both ecological and social activities
- Defined an arrival sequence into the central plaza space
- Defined hierarchy of spaces
- Enhanced permeability through clear pedestrian connections across activity zones
- Clear way finding and spatial hierarchy for day to day use and large events



KEY MEETING POINTS & ACTIVITY NODES

- Provide universally accessible, high-quality public facilities for all ages and demographics
- Establish a well connected hierarchy of spaces and programs that complement each other and offer varying sensory experiences and activities; formal, incidental, open, intimate, sunny, sheltered, hard and soft
- Inclusion of amenities and facilities in plaza that supports 24-7 activities
- Cater to a series of diverse spaces promoting gatherings, meeting, and a sense of identity within the broader community
- Provision of shade and weather protection to increase comfort and prolong activity on the plaza



TRANSITION ZONES

- Create a critical urban element and place activator with strong connections to the surrounding community
- Reduce barriers to accessibility and create new connections to weave the various nodes together
- Inclusion of informative signage on water management strategies and outcomes
- Enhanced permeability through easily pedestrian connections across the zones
- Draw circulation from existing connection networks to create a destination point and convenient connections between plaza and transport nodes
- Provision of shade and weather protection





Create a world class sporting facility in a bushland setting

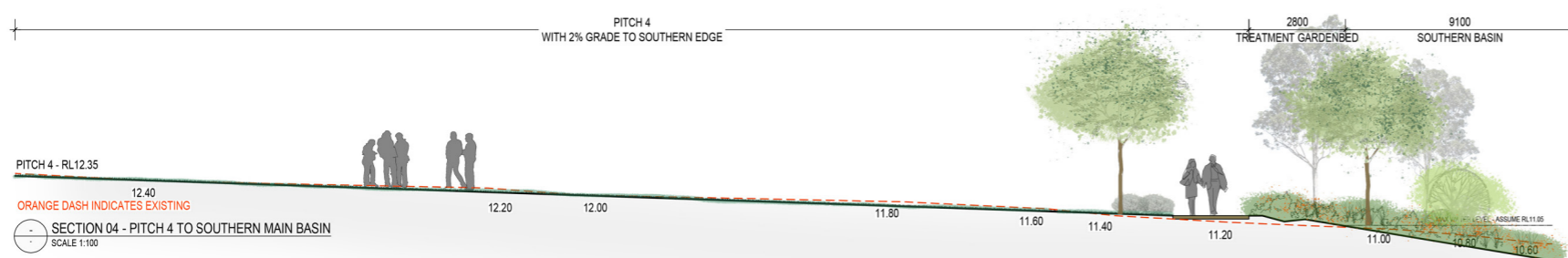
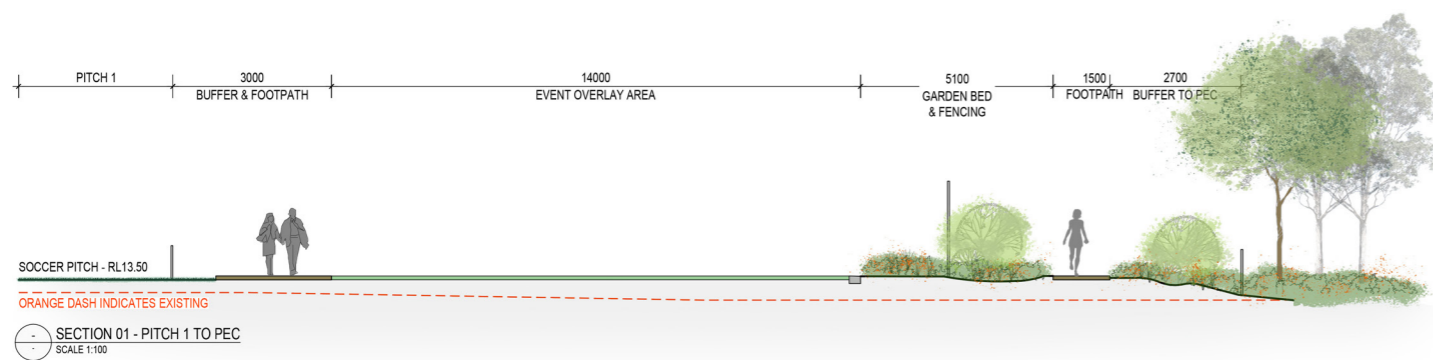


**LEGEND**

- 1 PEC - Priority ecological community and vegetation enhancement
- 2 Bio-diversity enhancement & buffer landscape
- 3 Potential bicycle pathway connection
- 4 Plaza space with activation nodes
- 5 Event overlay areas
- 6 Barrier fencing
- 7 Ecological loop and pedestrian pathway
- 8 Existing wetland
- 9 Maintenance access & footpath
- 10 Southern catchment basin with water body
- 11 Southern treatment basin
- 12 Proposed walkway connection to southern oval
- 13 Southern oval
- 14 Gravel footpath connection to bush forever
- 15 Service vehicle access
- 16 Maintenance and storage facility
- 17 Parking
- 18 Entry and vehicle drop-off bays
- 19 Proposed coach drop-off bay
- 20 Football West building
- 21 5-a-side pitch
- 22 Amenities building with green roof
- 23 Northern treatment basin from carpark
- 24 Northern catchment basin









## Dry (upper bank)

### Trees



*Allocasuarina fraseriana*  
Western Sheoak  
5 - 15m



*Banksia attenuata*  
Dwarf Slender Banksia  
1m



*Banksia Grandis*  
Bull Banksia  
4 - 8m



*Banksia menziesii*  
Dwarf Firewood Banksia  
1m



*Corymbia calophylla*  
Marri  
Up to 40m



*Eucalyptus marginata*  
Jarrah  
Up to 40m



*Eucalyptus todtiana*  
Coastal Blackbutt  
2 - 8m



*Eucalyptus wandoo*  
Wandoo  
Up to 25m



*Xanthorrhoea preissii*  
Grass Tree  
0.3-3m

### Shrubs



*Acacia applanta*  
0.4m



*Acacia willdenowiana*  
Grass Wattle  
0.6m



*Actinostrobus pyramidalis*  
Swamp Cypress  
1 - 4m



*Aotus procumbens*  
0.5m



*Astartia scoparia*  
Common Astartia  
1.5m



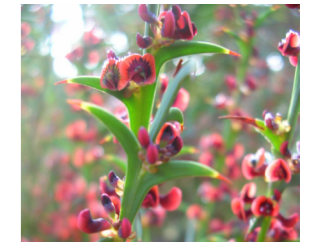
*Banksia nivea*  
Couch Honeypot  
0.5m



*Beaufortia squarrosa*  
Sand Bottlebrush  
0.5 - 2m



*Bossiaea eriocarpa*  
Common Brown Pea  
0.5m



*Daviesia decurrens*  
Prickly Bitter Pea  
0.5 - 1m



*Eremophila glabra*  
Tar Bush  
5m



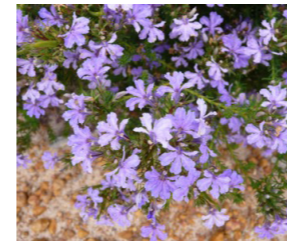
*Gastrolobium capitatum*  
Egg and Bacon  
0.5m



*Hakea ceratophylla*  
Horned Leaf Hakea  
0.5 - 0.2m



*Hakea varia*  
Variable Leaved Hakea  
3m



*Hemiandra pungens*  
Snake Bush 0.3m



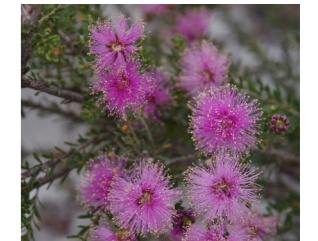
*Hibbertia hypericoides*  
Yellow Buttercups  
0.5m



*Hypocalymma robustum*  
Swan River Myrtle  
1m



*Kennedia prostrata*  
Scarlett Runner  
0.1m



*Melaleuca seriata*  
1m



*Melaleuca thymoides*  
1m



*Melaleuca tricophylla*  
1m



*Melaleuca viminea*  
'Mohan'  
5m



*Patersonia occidentalis*  
Purple Flag  
1m



*Philoteca spicata*  
Pepper and Salt  
0.5m



*Regelia ciliata*  
Regelia  
0.8 - 2m



*Verticordia acerosa*  
1m



*Verticordia densiflora*  
Compact Feather Flower  
1 - 2m



*Verticordia plumosa*  
Plumed Feather Flower  
1m





Dry (upper bank)

Herbs



*Anigozanthos manglesii*  
Mangles Kangaroo Paw  
0.2 - 1m



*Conostylis aculeata*  
Prickly Conostylis  
0.3m



*Conostylis candicans*  
Grey Cottonheads  
0.4m



*Dampiera linearis*  
Common Dampiera  
0.2m



*Dampiera trigona*  
Angled Stem Dampiera  
0.5m



*Dianella revoluta*  
Flax Lily  
0.5m



*Thysanotis multiflorus*  
Many Flowered Fringe  
Lily, 0.2m

Species Name	Nyungar / Common Name / Size
<b>Trees</b>	
<i>Allocasuarina fraseriana</i>	Western Sheoak, 5 - 15m
<i>Banksia attenuata</i>	Dwarf Slender Banksia, 5 - 10m
<i>Banksia grandis</i>	Bull Banksia, 4 - 8m
<i>Banksia menziesii</i>	Firewood Banksia, 2 - 10m
<i>Corymbia calophylla</i>	Marri, up to 40m
<i>Euclayptus marginata</i>	Jarraah, up to 40m
<i>Eucalyptus tottiana</i>	Coastal Black Bark, 2 - 8m
<i>Eucalyptus wandoo</i>	Wandoo, up to 25m
<i>Taxandria linearifolia</i>	Swamp Peppermint, up to 5m
<b>Shrubs</b>	
<i>Acacia Applanata</i>	0.4m
<i>Acacia willdenowiana</i>	Grass Wattle, 0.6m
<i>Actinostrobus pyramidalis</i>	Swamp Cypress, 1 - 4m
<i>Aotus procumbens</i>	0.5m
<i>Astartia scoparia</i>	Common Astartea, 1.5m
<i>Banksia nivea</i>	Couch Honeypot, 0.5m
<i>Beaufortia squarrosa</i>	Sand Bottlebrush, 0.5 - 2m
<i>Bossiaea eriocarpa</i>	Common Brown Pea, 0.5m
<i>Daviesia decurrens</i>	Prickly Bitter pea, 1m
<i>Eremophila glabra</i>	Tar Bush, up to 5m
<i>Gastrolobium capitatum</i>	Egg and Bacon, 0.5m
<i>Hakea ceratophylla</i>	Honed Leaved Hakea, 1m
<i>Hakea varia</i>	Variable Leaved Hakea, 3m

Species Name	Nyungar / Common Name / Size
<i>Hemiandra pungens</i>	Snake Bush, 0.3m
<i>Hibbertia hypericoides</i>	Yellow Buttercups, 0.5m
<i>Hypocalumma robustum</i>	Swan River Myrtle, 1m
<i>Kennedia prostrata</i>	Scarlett Runner, 0.1m
<i>Lechenaultia floribunda</i>	Free-flowering Lechenaultia, 0.5m
<i>Melaleuca seriata</i>	1m
<i>Melaleuca thymoides</i>	1m
<i>Melaleuca tricophylla</i>	1m
<i>Melaleuca viminea</i>	'Mohan', 5m
<i>Patersonia occidentalis</i>	Purple Flag, 1m
<i>Philotheca spicata</i>	Pepper and Salt, 0.5m
<i>Regelia ciliata</i>	Regelia, 0.8 - 2m
<i>Verticordia acerosa</i>	1m
<i>Verticordia densiflora</i>	Compactec Feather Flower, 1 - 2m
<i>Verticordia plumosa</i>	Plumed Feather Flower, 1m
<i>Xanthorrhoea preissii</i>	Grass Tree, 0.3 - 3m
<b>Herbs</b>	
<i>Anigozanthos mangglesii</i>	Green Kangaroo Paw, 1m
<i>Conostylis aculeata</i>	Prickly Conostylis, 0.3m
<i>Conostylis candicans</i>	Grey Cottonheads, 0.4m
<i>Dampiera linearis</i>	Common Dampiera, 0.2m
<i>Dampiera trigona</i>	Angled Stem Dampiera, 0.2m
<i>Dianella revoluta</i>	Flax Lily, 0.5m
<i>Thysanotis multiflorus</i>	Many Flowered Fringe Lily, 0.2m





Ephemeral (mid bank)

Trees



*Banksia littoralis*  
Swamp Banksia  
10m



*Casuarina obesa*  
Swamp Sheoak  
8m



*Eucalyptus lane-poolei*  
Salmon Ghost Gum  
15m



*Eucalyptus rudis*  
Flooded Gum  
15m



*Melaleuca preissiana*  
'Modong'/'Moonah'  
10m

Shrubs



*Acacia incurva*  
0.2 - 0.5m



*Acacia pulchella*  
Prickly Moses  
Up to 1.5m



*Actinostrobus pyramidalis*  
Swamp Cypress  
1 - 4m



*Aotus procumbens*  
0.5m



*Astartea scoparia*  
Common Astartea  
1 - 2m



*Banksia telmatiaea*  
Swamp Fox Banksia  
0.5 - 2m



*Calothamnus lateralis*  
Swamp Blood Flower  
0.4 - 1.5m



*Euchilopsis linearis*  
Swamp Pea  
1m



*Gastrolobium capitalum*  
Bacon and Eggs  
1m



*Hibertia subvaginata*  
Stalked Guinea Flower  
0.5m



*Hypocalymma angustifolium*  
White Myrtle, 1.5m



*Jacksonia furcellata*  
Grey Stinkwood 3m



*Jacksonia sternbergiana*  
Green Stinkwood 3m



*Melaleuca lateritia*  
Robin Redbreast Bush  
2m



*Melaleuca seriata*  
1m



*Melaleuca teritifolia*  
'Banbar'  
4m



*Pericalymma ellipticum*  
Swamp Tea Tree  
3m



*Viminaria juncea*  
Swishbush  
1 - 4m

Herbs



*Anigozathos humilis*  
Catspaw  
0.5m



*Burchardia Multiflora*  
Dwarf Burchardia  
0.3m



*Calytrix flavesens*  
Summer Star Flower  
0.5m



*Conostylis aculeata*  
Prickly Conostylis  
1.5m

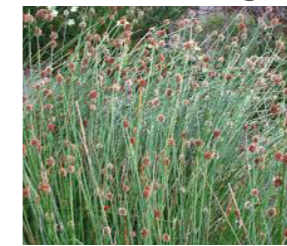


*Haemodorum simplex*  
'Mardja' 0.6m



*Dampiera trigona*  
0.75m

Rushes and Sedges



*Chorizandra enodis*  
Black Bristle Rush 1m



*Ficinia nodosa*  
Knotted Club Rush  
1m



*Isolepis cernua*  
Nodding Club Rush  
0.2m





## Ephemeral (mid bank)

Species Name	Nyungar / Common Name
<b>Trees</b>	
<i>Banksia littoralis</i>	Swamp Banksia, 10m
<i>Casuarina obesa</i>	Swamp Sheoak, 8m
<i>Eucalyptus lane-poolei</i>	Salmon Ghost Gum, up to 15m
<i>Eucalyptus rudis</i>	Flooded Gum, up to 15m
<i>Melaleuca preissiana</i>	'Modong' / Moonah 10m
<b>Shrubs</b>	
<i>Acacia incurva</i>	0.2 - 0.5m
<i>Acacia pulchella</i>	Prickly Moses, up to 1.5m
<i>Actinostrobus pyramidalis</i>	Swamp Cypress, 1 - 4m
<i>Aotus procumbens</i>	0.5m
<i>Astartea scoparia</i>	Common Astartea, 1-2m
<i>Banksia telmatiaea</i>	Swamp Fox Banksia, 0.5 - 2m
<i>Calothamnus lateralis</i>	Swamp Blood Flower, 0.4 - 1.5m
<i>Euchilopsis linearis</i>	Swamp pea, 1m
<i>Gastrolobium capitalum</i>	Bacon and Eggs, 1m
<i>Hibertia subvaginata</i>	0.5 - 1.2m
<i>Hypocallymma angustifolium</i>	Koodgeed/ White Myrtle, 1.5m

Species Name	Nyungar / Common Name
<i>Jacksonia furcellata</i>	Grey Stinkwood, 3m
<i>Jacksonia sternbergiana</i>	Green Stinkwood, 3m
<i>Melaleuca lateritia</i>	Robin Redbreast Bush, 2m
<i>Melaleuca seriata</i>	1m
<i>Melaleuca teritifolia</i>	'Banbar', 4m
<i>Pericalymma ellipticum</i>	Swamp Tea Tree, up to 3m
<i>Viminaria juncea</i>	Swishbush, 1 - 4m
<b>Herbs</b>	
<i>Anigozanthos humilis</i>	Catspaw, 0.5m
<i>Burchardia Multiflora</i>	Dwarf Burchardia, 0.3m
<i>Calytrix flavescens</i>	Summer Star Flower, 0.5m
<i>Conostylis aculeata</i>	Prickly Conostylis, 1.5m
<i>Haemodorum simplex</i>	'Mardja', 0.6m
<i>Lobelia anceps</i>	Angled Lobelia, 1.2m
<b>Rushes and Sedges</b>	
<i>Chorizandra enodis</i>	Black Bristle Rush, 1m
<i>Ficinia nodosa</i>	Knotted Club Rush, 1m
<i>Isolepis cernua</i>	Nodding Club Rush/Fiber Optic Grass





Damp (Lower bank/wet)

Trees



*Melaleuca raphiophylla*  
Swamp Paperbark  
Up to 8m



*Taxandria linearifolia*  
Swamp Peppermint  
Up to 5m

Rushes / sedges



*Baumea articulata*  
Jointed Twig Sedge  
2.6m



*Baumea Juncea*  
Bare Twig Sedge  
1m



*Baumea rubiginosa*  
Soft Twig Rush  
4m



*Bolboschoenus caldwellii*  
Marsh Club-rush  
0.3 - 1.2m



*Eleocharis acuta*  
Common Spike Rush  
0.7m



*Juncus krausii*  
Sea Rush  
1.5m



*Juncus pallidus*  
Giant Rush  
2m

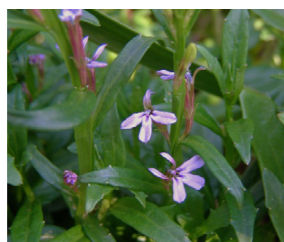


*Juncus subsecundus*  
Finger Rush  
0.5 - 1m

Herbs



*Centella asiatica*  
Centella  
0.2m



*Lobelia anceps*  
Angled Lobelia  
0.3m





## Damp (Lower bank/wet)

Species Name	Nyungar / Common Name / Size
<b>Trees</b>	
<i>Melaleuca raphiophylla</i>	Swamp Paperbark, up to 8m
<i>Taxandria linearifolia</i>	Swamp Peppermint, up to 5m
<b>Rushes/Sedges</b>	
<i>Baumea articulata</i>	'Wuargul' /Jointed Twig Sedge, up to 2.6m
<i>Baumea juncea</i>	Bare Twig Sedge, 1m
<i>Baumea rubiginosa</i>	Soft Twig Rush, Up to 4m
<i>Baumea vaginalis</i>	Sheath Twig Sedge, 1.5m
<i>Bolboschoenus caldwellii</i>	Marsh Club Rush, 0.3 - 1.2m
<i>Eleocharis acuta</i>	Common Spike Rush, 0.7m
<i>Juncus kraussii</i>	Sea Rush, 1.5m
<i>Juncus pallidus</i>	Giant Rush, 2m
<i>Juncus subsecundus</i>	Finger Rush, 0.5 - 1m
<i>Lepidosperma longitudinale</i>	Pithy Sword-sedge, 0.5m
<b>Herbs</b>	
<i>Centella asiatica</i>	Centella, 0.2m
<i>Lobelia anceps</i>	Angled Lobelia, 0.3m







**JOSH BYRNE & ASSOCIATES**  
LANDSCAPE • SUSTAINABILITY • COMMUNICATIONS

**T** 08 9433 3721 **E** [design@joshbyrne.com.au](mailto:design@joshbyrne.com.au) **W** [joshbyrne.com.au](http://joshbyrne.com.au)  
**A** Suite 109 Atwell Buildings 3 Cantonment Street Fremantle WA 6160