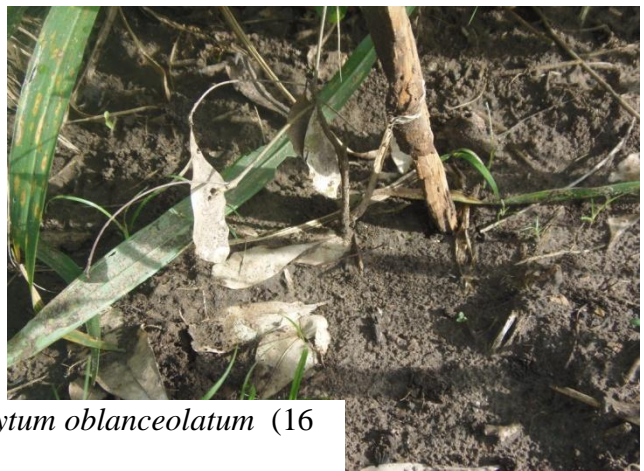


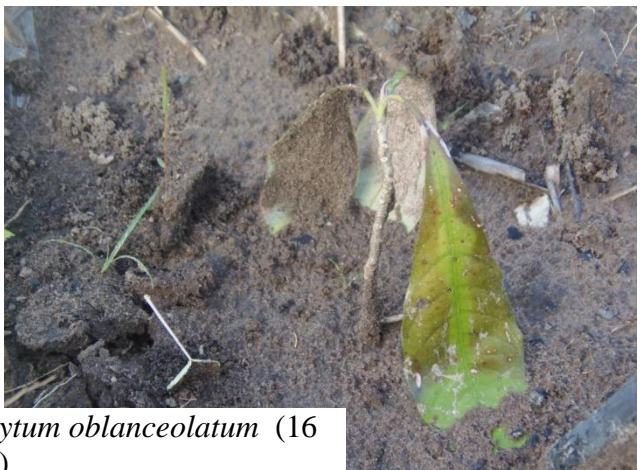
Root suckers induction of *Englerophytum ob lanceolatum* (16 months, 11 leaves in mean)



Air layering of *Englerophytum ob lanceolatum* (16 months, 4 leaves in mean)



Root cutting of *Englerophytum ob lanceolatum* (16 months, 5,5 leaves in mean)



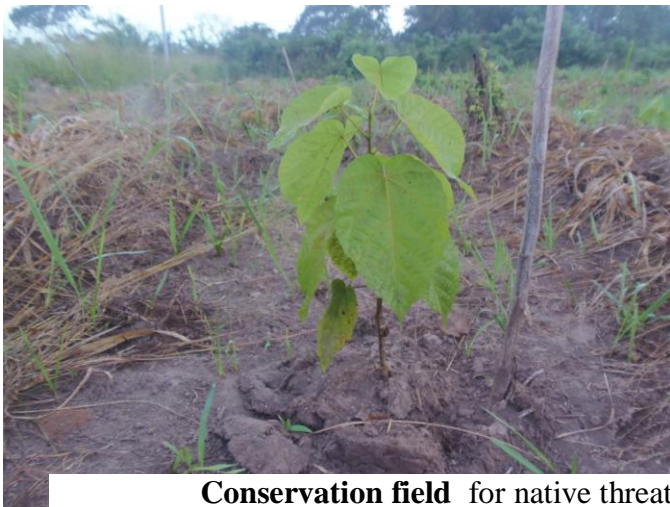
Seedling of *Mansonia altissima*
(13 months, 9 leaves in mean)



Seedling of *Triplochiton scleroxylon*
(16 months, 17 leaves in mean)



Root cuttings of *Englerophytum ob lanceolatum* (16 months, dead)



Conservation field for native threatened tree of Ewe Forest (Ketou, Benin)



Farmers Field Schools (Ketou, Benin): practices of Air layering on *Triplochiton scleroxylon*



Farmers Field Schools (Ketou, Benin): practices of Air layering on *Mansonia altissima*



Air layering on vertical stem of *Mansonia altissima* (November 2015)



Foothills of *Ceiba pentandra* in Ewe forest at Ketou, Benin (November 2015)