



# Connecticut Orchid Society

## Newsletter Sept 2017

*58 Years & Growing*

*The First, Original Orchid Society in Connecticut*

*Affiliated with the American Orchid Society and Orchid Digest*

### Next Meeting

**Wednesday, September 13th,  
2017,**

**Cheshire Senior @**

**84 South Main Street Cheshire**

(See last pg. 8 for map & directions)

6:30 pm.: Doors open. Socializing begins. Come early and help set-up for the meeting.

7:30 pm: Business meeting begins

8:00 pm: Featured speaker and/or presentation begins.

### This Month's Featured Event

#### Repotting and Division Presentation

Free Orchids! Come try your hand at division and repotting, risk free! COS will provide plants, materials, and the know how. You get to take the plants home afterwards! Hands on learning, and free, blooming size orchids, how can that be beat?



For notice of last-minute or inclement weather cancellation, visit our website [www.ctorchids.org](http://www.ctorchids.org).



### Inside this Issue

June 2017 Volume LVIII Issue

#### Regular Features

Next meeting .....1  
This Month's Featured Event.....1  
COS Mission Statement .....1  
Coming Events, Mentor List .....2  
New Newsletter Editor's Message.....2  
President's Message.....3  
Show Table List.....3  
AOS Corner..... 4  
Beginner's Column .....5  
Bringing plants in. ...6-7  
Around the Greenhouse.....7  
Map &/or Directions to Mtg. Location...8

Members with last names beginning with "A" through "Z", please bring goodies for this month's refreshment table.



Connecticut Orchid Society (COS) is an incorporated non-profit 501 (c) (3) organization founded in 1959. Please consider making a charitable contribution to COS. Most donations made to COS are tax deductible.

#### Contact us:

**Write:** Connecticut Orchid Society, Inc.  
Editorial Office  
P.O. Box 198  
Farmington, CT 06034-0198

**E-mail:** President Cheryl Mizak\_  
[president@ctorchids.org](mailto:president@ctorchids.org)  
Editor: Monty Sabolcik\_  
[editor@ctorchids.org](mailto:editor@ctorchids.org)

### Connecticut Orchid Society Mission Statement

The Connecticut Orchid Society is an incorporated, non-profit association for the preservation and extension of knowledge concerning the conservation, ecology, science, cultivation, hybridization, appreciation and uses of orchids; and to carry on such activities as may be necessary or desirable to effectuate such purposes.

## 2017 Connecticut Orchid Society Officers & Posts

PRESIDENT	Cheryl Mizak	(203) 264-6096
VICE-PRESIDENT	Monty Sabolcik	msabolcik@cjryouth.org
TREASURER	David Tognalli	(860) 521-7249
DIRECTOR -AT- LARGE	Sue Kennedy	(860) 567-1337
DIRECTOR -AT- LARGE	Rebecca Schwartz	Rebecca.r.schwartz@gmail.com
RECORDING CO-SECRETARY	Carla Koch	(203) 272-8121
RECORDING CO-SECRETARY	Tom Russell	(203) 298-4574
MEMBERSHIP CHAIRPERSON	Mary Rampone	(203) 263-2831
CORRESPONDING SECRETARY	Sharon SmithDelisle	(203) 744-1849
EDITOR, LIBRARIAN/HISTORIAN	Monty Sabolcik	
AOS REPRESENTATIVE	Judy Becker	(860) 824-0561
CONSERVATION CHAIRPERSON	(Vacant)	—
SPECIAL EVENTS COORDINATOR	Cheryl Mizak	(203) 264-6096
REFRESHMENT CO-CHAIR	(Vacant)	—
WEB MASTER	Mary Ellen Wilson	(203) 433-4161

## Upcoming Events



**CT Orchid Society Summer Picnic**  
**August 15th, 2017**  
**2:00 p.m.**  
**Graciously hosted by Sue Kennedy**  
**at her home at**

### Mentor List



The following COS members are available to answer your culture questions and help you with any orchid growing problems you may have:

**Judy Becker** [judybecker40@att.net](mailto:judybecker40@att.net) (860) 824-0561 (8:00--8:00 pm) Greenhouse growing methods: Wide variety of species & hybrids

**Sam Hinckley** [samuelhinckley@comcast.net](mailto:samuelhinckley@comcast.net) (860) 688-0943 (After 7:30 pm) Windowsill growing methods: Species & hybrids

**Glenn McGeough** [mcgeough7@gmail.com](mailto:mcgeough7@gmail.com) (203) 482-3973. Specializing in Cattleyas.

**Jeffrey Richards** [jeffrey.richards@snet.net](mailto:jeffrey.richards@snet.net) (Contact anytime). Greenhouse growing methods: Specializing in Paphiopedilums.

**Sharon SmithDelisle** [sharonsmithdelisle@hotmail.com](mailto:sharonsmithdelisle@hotmail.com) (Contact anytime) Under lights & windowsill growing methods: Bulbophylums, Cymbidiums, Dendrobiums, Paphiopedilums, Miltoniopsis & mixed genera.

**David Tognalli** [dtog54@sbcglobal.net](mailto:dtog54@sbcglobal.net) (860) 521-7249 (Contact evenings & weekends) Windowsill & outdoor growing methods: Warm growers, Cattleyas, Dendrobiums & mixed genera.

**COS Membership Information : \$20/yr. Individual \$25/yr. Family \$200 Individual or \$250 Family Lifetime Membership (never pay dues again!) Visit [www.ctorchids.org](http://www.ctorchids.org) to apply for/renew membership. We accept Paypal. Contact Membership Chairperson Mary Rampone at [www.COSMembership@earthlink.net](mailto:www.COSMembership@earthlink.net) for more details.**

**Membership Policy** Membership is open to anyone interested in orchids. Members join the Society by payment of annual dues. Memberships may be individual, student, family, life or honorary. Honorary membership is for life and is made by nomination of the Board of Directors and majority vote of the membership present at a regular meeting. The newsletter is published each month except July and August. Annual membership includes electronic delivery of the newsletter.

### New Newsletter Editor's Message:

I am happy to announce that I will be taking over the newsletter and the library. The library will hopefully be up and running by the October meeting, and I will be seeking member feedback at that meeting regarding how to run the library in the future. Also, I apologize for the lateness of this newsletter, technical difficulties during the transition summer vacation for the young felons at my day job was to blame, and will not be an issue going forward, particularly now that I have paid the highwaymen at Microsoft for my own copy of Adobe, and then mental root canal of navigating their IT to get the kinks out of the license issues that caused me to lose TWO previous finished iterations of this newsletter to data heaven. Anyway, I digress... One of the first things I want to do is beef up how we document the show table, as it is of consistently high quality and worthy of pounding our chests over. I am going to experiment with how to best deliver the media to members, so please feel free to offer feedback and suggestions as the process plays out. If any members have suggestions, comments, or want to provide information, in particular pictures of new blooming hybrids or species, cultural successes, or other content to the newsletter, please email me at [msabolcik@cjryouth.org](mailto:msabolcik@cjryouth.org)

Thanks,

Monty

**Content Acknowledgement** All information, opinions, reporting and recommendations that appear in this newsletter are those of the editor (unless otherwise noted) and do not necessarily reflect those of the Connecticut Orchid Society. The editor is deeply indebted to the American Orchid Society for the free reprinting of articles, photos, tips & tricks, advice, checklists, etc. from its monthly magazine *Orchids* without which the COS newsletter, and its membership would be the poorer.

## President's Message



Cheryl Mizak

Try your hand at dividing and potting  
Maybe you have been hesitant to divide and repot well now is your chance to give it a try. Bring your gloves we will be dividing and repotting some very large orchids.  
Several different species will be available so you will have a chance work on different plants



Did you know?

When to divide and repot your orchids is critical to success with them in the short and long term. Dividing some pure *Cattleya* species (such as *Cattleya Guttata*) at the wrong time or in the wrong fashion can kill the plant outright. Repotting done improperly or at the wrong time can severely set a plant back. Both repotting and division are opportunities to spread virus and other pathogens if we do not take proper precautions. Generally speaking, hybrids (regardless of genus to some extent) are more tolerant of the type of stress that mistakes in timing can cause. The closer to pure species you get, the more careful you want to be will all of your cultural practices.

There are a million different resources for learning when to repot, (Might I suggest AOS.org?) and we will be happy to discuss this in detail at the meeting.

Odom's Orchids was nice enough to post presentations from the National *Cattleya* Conference that they host each year. Keith Davis is a *Cattleya* nut, and has a special method for dividing plants that is stress free, even with the most difficult species. He also covers several other cultural "best practices" for using when dividing, and has a ton of useful info for *Cattleya* growers. The link is :

[https://www.youtube.com/watch?v=loVAV\\_1MpfQ](https://www.youtube.com/watch?v=loVAV_1MpfQ)



## Upcoming Webinars:

### Greenhouse Chat with Ron McHatton

Tuesday, September 12, 2017 *Everyone invited*

Please join Ron McHatton, American Orchid Society Director of Education and Science Officer, who will discuss a variety of topics on orchid culture based on questions submitted by attendees. Please send your questions to [stillisch@cox.net](mailto:stillisch@cox.net) by Sunday, September 10-th.

Register now using this link: <http://attendeegotowebinar.com/register/2368118630129673219>

**Note:** After registering, you will receive a confirmation email containing information about joining the webinar.



While not an AOS webinar, I want to again draw attention to the YouTube Videos that Odom's Orchids has posted from their past Annual Cattleya Conferences. I referenced Keith Davis's talk earlier, which I have found myself re-watching repeatedly to hammer home the vast info contained within. Many of them are excellent, but in my opinion, the following are mandatory viewing:

Roy Tokunaga of H&R orchids on breeding-  
<https://www.youtube.com/watch?v=ePI-c6W8ywQ>

Peter Lin on mini Cattleyas- So many of the windowsill hybrids have "minicat" species in their background, good info here: <https://www.youtube.com/watch?v=SNhLIVPWoxM>

## Winter is coming! Get your Orchids ready to come in for the season.



In May and June, when it finally warms up enough to put my plants outside, I am thrilled because I know that if I shade, feed, and keep a watchful eye to treat for bugs (spider mites, thrips, and bush snails are the three that seem to give me persistent issues) if they pop up, my plants will grow like crazy and then reward me with great flowers. This feeling pales to the nauseating sensation when the leaves start to turn and the time comes to bring them back in for the winter and the stress that this can bring your plants if you are not careful. These next few weeks before frost is a perfect time to treat your plants before bringing them into the green house or home for the fall and winter season. Below are some resources to consider to deal with pests and diseases, and some of the products I have been able to find locally in CT for use on my plants. As with anything, please use caution when using any new product on your plants, as the orchid family is so large, broad generalities can lead to trouble. Caveat Emptor, read your product labels well, and measure twice before pouring!

First of all, absolute gold standard in my mind when you are talking about pests and disease is the AOS Webinar that Ron Mchatton did a few years back. It is a two part Webinar, one on bugs, the second on disease and virus.

The link for these webinars is :

<http://www.aos.org/orchids/webinars/member-only/orchids-pest-management.aspx>

<http://www.aos.org/orchids/webinars/member-only/orchids-pest-management-2.aspx>

Again, I cannot stress how excellent these are. They are worth the price of the AOS membership alone.

If you are unable to watch the webinars as you are not an AOS member, and don't want to spring for the membership fee, Sue Bottom from the St Augustine Orchid Society runs an incredible free website as part of her newsletter for their club. Frankly, if this newsletter is one day up to the level of hers, it would be an accomplishment. Anyway, a link to her site with some phenomenal free information (with great pictures to help with ID!) is available here:

<http://www.staugorchidsociety.org/culturepests.htm>

All of this information is great, but I have at times struggled to find the pesticides I need in CT, and at times the different brand names can get confusing, such as with imidacloprid and merit. (the former the pesticide name, the latter a trade name, much like with drugs, such as ibuprofen and advil) Always use the Internet as a tool if you are confused with a name, a little digging will almost always set you on the right path. Also, always be safe when using any pesticide or chemical, use appropriate safety gear and remember that the concentrate (e.g. if you are not using premixed ready to spray product) is exponentially more risky in terms of exposure than spray during application. Put on gloves and safety gear BEFORE mixing!

## Pesticides Continued

Without further adieu, here are some of my favorite chemicals and where I locate them.

Acephate (aka Orthene) is the big gun, and my favorite, all purpose pesticide. It has a short residual action in the plant, and is systemic through the whole plant. Acephate is the only commonly available pesticide to homeowners (that I know of) that moves through both the leaves and the stems of the plant- if you spray the leaves, it gets to the roots, if you drench the roots, it will move to the flowers and stems and leaves. It also does not mar flowers or buds, so is a good choice for thrips or other bugs that attack and stay in flower parts. Now the downside..... it smells like grim death. For real, it smells bad enough to knock a buzzard off a shit wagon. It smells like this for about a week, so this is a pesticide you want to spray now before you really have to get those plants in for the season. I find it most commonly available as Bonide Systemic Insect Control, and the label can be found here: <http://www.bonide.com/products/insect-control/view/941/systemic-insect-control>

Spinosad- Found most commonly under the name Captain Jack's Deadbug Brew, also put out by Bonide. Label here: <http://www.bonide.com/products/insect-control/view/252/captain-jacks-deadbug-brew-conc>  
I like Spinosad as it can be used for organic gardening, is effective on exposed thrips, and does not mar flowers. It also does not smell like Acephate. It does not have any residual effect and must make contact with the insects to hurt them.

Azadirachtin- An extract of NEEM oil, this product prevents insects from molting and reaching adulthood by interfering with how their shells form. I use it as the final step in a spraying rotation, my general feeling being that the first two sprays kills the adults, and the final spray of Azadirachtin kills the juveniles. It is sold under a variety of names, but I have been using Bonides hose end sprayer sold under "Japanese beetle and grub killer" just look for Azadirachtin as the active ingredient. Also sold under brand name Azamax, and others.

Aliette- aka Fosetyl Aluminum. The acephate of fungicides. Drench or Spray. Particularly good for black rot. Available in bulk on the Internet, have found it on amazon, and at OFE-international in Florida, which will ship all kinds of pesticides to CT that may or not be registered here. (if you have the stomach for that kind of thing) A link to their page is <https://ofeintl.com/shop?olsFocus=false&olsPage=t/pest--disease-controls>

Cleary's- aka Thiophanate- Methyl. Good for a variety of leaf spotters, broad spectrum fungicide. Systemic. I use it in a rotation with Aliette. Available on Amazon, a variety of sources, under many different trade names.

Rose Shield- A bonide tank mix, three in one spray. Has a contact insecticide, a systemic insecticide, and a broad spectrum fungicide. A good all purpose spray. I would use caution in applying to super tender species and exotic stuff, as I have only personally tested it on my collection of Cattleyas, Paphs, Vandas, oncidiums, and catasetums. I have sprayed it on Dendros without issue, but as always buyer beware. The link for it is : <http://www.bonide.com/products/insect-and-disease-control/view/986/rose-shield-conc>

Please consult one of the links at the beginning any spray program, and take proper precautions. Spraying improperly can lead to insect resistance in your populations. Please contact a member if you have any questions.

## Gold Country Orchids Preorder list

Gold Country Orchids is coming to our November meeting. Alan Koch needs no introduction as a renowned orchid breeder, judge, and lecturer. He specializes in miniature and windowsill Cattleyas, but grows thousands of species and many different genera. He is offering a 10% pre-order discount off of his website prices. The link to his site is

<http://www.goldcountryorchids.com/>

Attached to the back of the newsletter is a limited availability list with offerings that are not on his website. I will email him to find out a preorder deadline for the November meeting. Take a close look through his site, and the pre-order list, he sells his plants at attractive prices given the excellence of his breeding stock and the award potential of many of his crosses. He is also a wealth of information on orchids and his presentations never disappoint, so mark off your calendars.

These are two first bloom plants I bought from Alan, I think they were 9\$ a piece.



Cattleya Precious Stones X Landate



Hippodamia X Aclandiae



### Around the Greenhouse -- Editor's keikis

Letters to the editor are always welcome. Your feedback about any issue that is on your mind will help us improve our Society, as well as the newsletter. Please write to me at [editor@ctorchids.org](mailto:editor@ctorchids.org) or 38 Robinhood Rd., Danbury, CT 06811.

Dear Readers—

Again, sorry for the lateness of this edition of the newsletter- I in no way plan for this to be a habit. If any of the members have any suggestions about how to better deliver the media for this newsletter, please let me know. I am in particular trying to find a way to better and more easily deliver photos of the show table to folks. Jan has been nice enough to take the pictures on his iPhone, but I wonder if any of our members are photo buffs, and have a nice camera they would be willing to use, and or bring to meetings to help us brag about our good work? Again, if anyone knows of any information that we should share with our members, or have requests about what you want to see in this space in the future, please contact me.

# Directions to Cheshire Senior Center

84 South Main Street, Cheshire, CT 06410

## FROM NEW HAVEN AND SOUTH:

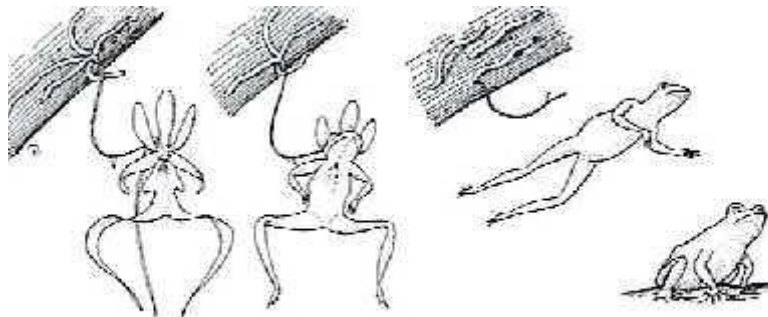
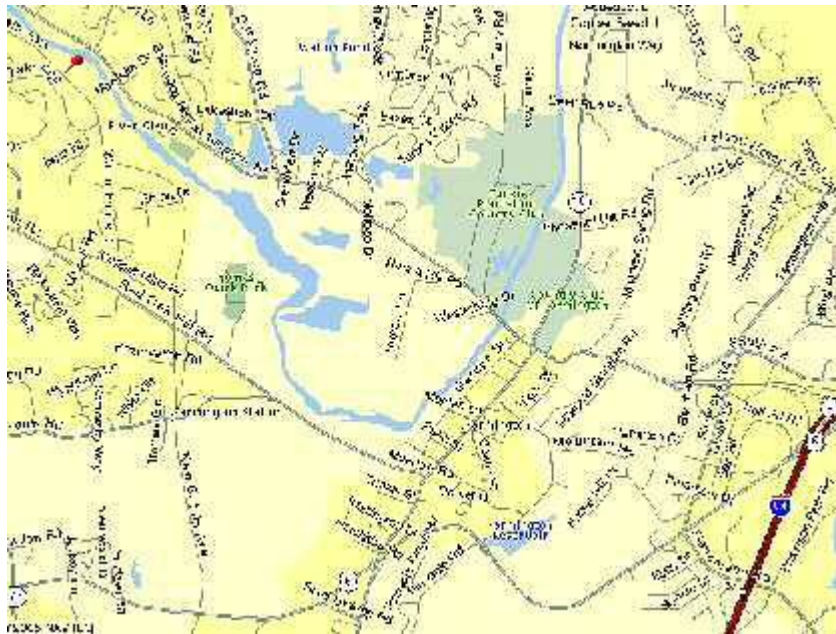
Take I-91 North to Exit 10. Take Route 40 Connector to end. Go right off exit, north on Route 10. Take Route 10 into Cheshire center. Take right on Wallingford Road and then next left on Elm Street. Entrance for Town Hall parking lot is on Elm Street. Town Hall is on corner of Wallingford Road and Route 10.

## FROM HARTFORD AND NORTH:

Take I-91 South to I-691 Connector in Meriden. Take I-691 West until Exit 3. Go left off exit and proceed south on Route 10 for about 4 miles into Cheshire center. Take left at light on to Academy Road (Cheshire Academy will be on your left). Take next right on to Elm Street. Entrance to Town Hall parking lot is on Elm Street, third driveway on right.

## FROM WATERBURY AND WEST:

Take Route 84 east to Exit 26. Bear right at end of ramp onto Waterbury Road (Rt. 70) follow for exactly 3.9 miles. Turn right at light on Main Street and take right at next light. Immediately after this light is another light at which you turn left on Academy Road/Rt. 68/70 (Cheshire Academy will be on your left). Take next right onto Elm Street. Entrance to town Hall parking lot is on Elm Street, third driveway on right.



Drawing by Ruth Sheehan



<i>Angulocaste Golden Eye x Lycaste cochleata</i>	C. Mizak	i, g
<i>Brassia Spider's Gold 'Fox Den'</i>	M. Sabolcik	w, g
<i>Brassia verrucosa var. majus</i>	C. Mizak	i, g
<i>Cattleya Canhamiana var. coerulea</i> ( <i>mossiae x purpurata</i> )	D. Tognalli	i, w
<i>Cattleya hybrid ig. 'Blue'</i>	S. Kennedy	i, g
<i>Cattleya mossiae var. coerulea</i> ( <i>Ramona x First Class</i> )	G. McGeough	i, l
<i>Cattleya warscewiczii 'Frau Melanie Beyroot' FCC/RHS</i>	G. McGeough	i, g
<i>Cattleya warscewiczii 'Rosslyn' AM/AOS</i>	G. McGeough	i, g
<i>Dendrobium farmeri</i>	R. Heigl	i, g
<i>Enanthleya Charlie Brown syn. Epicattleya</i>	M. Sabolcik	w, g
<i>Enanthleya Golden Sunburst syn. Epilaeliocattleya</i>	M. Sabolcik	w, g
<i>Encyclia cochleata</i>	H. Korst	i, g
<i>Encyclia mariae</i>	D. Tognalli	i, w
<i>Lealia milleri</i>	D. Tognalli	i, w
<i>Lycaste Mahogany</i>	C. Mizak	i, g
<i>Miltonia hybrid ig. 'Yellow'</i>	S. Kennedy	i, g
<i>Mystacidium capense</i>	C. Mizak	i, g
<i>Oncidioda Florescent syn. Odontioda</i> <i>x Oncidioda Crystal Palace syn. Odontioda</i>	G. McGeough	c, g
<i>Paphiopedilum (primulinum x praestans)</i>	C. Mizak	i, g
<i>Phalaenopsis Ox Sunkist 'OX1637' AM/AOS</i>	D. Tognalli	i, w
<i>Phalaenopsis Taiwan Red Cat 'Red Cat'</i>	D. Tognalli	i, w
<i>Phragmipedium Grande</i>	C. Mizak	i, g
<i>Cattlianthe Sierra Gem 'SVO' HCC/AOS syn. Slc.</i> <i>X Rhyncattleanthe Pure Love 'Del Mar' syn. Sophrolealiocattleya</i> ( <i>Rhyncattleanthe George King syn Brassolaeliocattleya</i> <i>x Cattleya Orpetii syn. Sophrolealia</i> ) <i>x Rhyncholaeliocattleya Golden Circle 'OPRL' syn. Potinara</i>	T. Russell	i, l



Encyclia cochleata



Encyclia mariae



Cattlianthe Sierra Gem 'SVO' HCC / AOS syn. Slc.  
X Rhyncholaeliocattleya Pure Love 'Del Mar' syn.  
Sophrolealiocattleya



Miltonia hybrid ig. 'Yellow'



Rhyncholaeliocattleya Golden Circle 'OPRL' syn. Potinara

*Rhyncholaeliocattleya My My* syn. *Brassolaeliocattleya* T. Russell i, 1



Cattleya hybrid 'Blue'



Angulocaste Golden Eye x Lycaste cochleata



Brassia verrucosa var. majus



Dendrobium farmeri



Cattleya mossiae var. coerulea  
(Ramona x First Class)



Cattleya warszewiczii 'Frau Melanie Beyroot'  
FCC/RHS



Laelia milleri



Enanthleya Charlie Brown syn. Epicattleya



Enanthleya Golden Sunburst syn. Epilaeliocattleya



Lycaste Mahogany

## Gold Country Orchids Limited Availability List

Gold Country Orchids: <http://www.goldcountryorchids.com>

Or call 916-645-8600 or email [gcorchids@aol.com](mailto:gcorchids@aol.com)

Aerangis fastuosa very vigorous mini	\$18.00
Aerangis hariothiana 'Gold Country' African mini with orange flowers	\$18.00
Aerangis hildebrandtii 'Gold Country' Similar to above but longer flower spike with slightly larger flowers. Great mini for the home 2" BS	\$25.00
Aerangis punctata Mini species with large flowers on a tiny plant BS	\$20.00
Angraecum didieri Miniature species 2 inch BS	\$15.00
Ascocentrum ampulaceum Orange form, India 2 inch BS	\$15.00
Baptistonia echinata select divisions of this Oncidium relative	\$25.00
Bulb Elizabeth Ann 'Buckelberry' FCC/AOS Mother divisions	\$25.00
Bulb falcatum v. flavum yellow rachis and flower 3 inch BS	\$25.00
Bulb falcatum 'Standing Tall' AM/AOS 3 inch BS	\$25.00
Bulb falcatum v. velutina 'GC' CCE/AOS	\$18.00
Bulb lasiochillum Yellow form 3 inch BS	\$15.00
Bulb Lovely Elizabeth Similar to Elizabeth Ann but with red flowers	\$20.00
Bulb. phalaenopsis Established plants in 4" basket with 16" leaves	\$75.00
Bulb. roxburghii Mini daisy type with apricot flowers	\$15.00
Bulb vaginatum 'Joyce' mini medusa 3 inch BS	\$20.00
Cadetia potamorphila 'Joyce Kelly' CHM/AOS Mini with red and green leaves with white flowers. On mounts.	\$35.00

Cattleya aclandiae v. alba 2 inch	\$45.00
Cattleya aclandiae v. coerulea 2 inch	\$35.00
Cattleya alagoensis Smallest member of Sophronitis, deep red	\$45.00
C. Dals Moon x C. intermedia v. aquinii Compact yellow to peach fragrant flowers, 50% will be splash 4 inch	\$18.00
Cattleya dormaniana 4N 2 inch BS of a great cross	\$25.00
Cattleya kerrii Miniature species very rare 2 inch NBS	\$20.00
Cattleya Lake Tahoe v. coerulea Select divisions of our best blue	\$45.00
Cattleya leopoldii coerulea x alba treated for tetraploids 3" BS	\$20.00
Cattleya longipes Syn. Laelia lucasiana	\$25.00
Cattleya lueddemanniana very dark parents 2 inch	\$12.50
Cattleya lueddemanniana v. alba 3 inch BS	\$20.00
Cattleya lueddemanniana v. coerulea 2 1/2 inch	\$12.50
4" BS	\$25.00
Cattleya Oconee Circle x Sierra Doll Six inch full round garnet flowers on Compact plants. 2" NBS	\$12.50
3" BS	\$18.00
Cattleya Precious Stones x Circle of Life Miniature cattleya with deep Ruby red 4 inch flowers that are long-lasting BS 2"	\$18.00
Cattleya Sierra Angel (Bright Angel Sierra Doll) 4 inch round garnet Flowers on miniature plants. 2" BS	\$15.00
Cattleya Small World 4N (lueola x aclandiae) 4 Inch BS	\$45.00

Ceratocentron fesselii x Tubecentron Niu Girl Orange miniature	
Vandaceous BS	\$35.00
Christensoniana vietnamica Mini with green flowers 2 inch NBS	\$15.00
Cochleanthes discolor 'Lil' AM/ODC Smells like cloves BS	\$45.00
Dendrobium cucumerinum Great miniature grown for its foliage	\$20.00
Dendrobium cuthbertsonii 4N Does not need a coolgreenhouse	
We grow this in Sacramento in Cattleya conditions but good water.	\$45.00
Dendrobium lichenastrum 'Gold Country' Maxi-mini on Mount	\$25.00
Dendrobium loddigessii 'Rob' Mini nobile type and fragrant BS	\$15.00
Dendrobium oligophyllum Miniature species 2 inch BS	\$12.50
Dendrobium pretecii Miniature on mount BS	\$20.00
Dendrobium trantuanii Miniature from Vietnam with 2" pink flwrs.	\$15.00
Dendrobium unicum Vietnam form with larger orange flowers	\$15.00
Dendrobium unicum Thailand form with typical orange flowers	\$10.00
Dyakia hendersoniana Fragrant mini Vanda 2 inch BS	\$12.50
Encyclia abeviata 'Quincy' Smallest member of the fragrans type BS	\$20.00
Epidendrum polybulbon 2" BS Cuban form and fragrant.	\$15.00
Epiphronitis Veitchii variegated form 2" BS	\$45.00
Eurychone galeandra African angracoid with peach flowers	\$35.00
Eurychone rothschildiana Fragrant white and green species 4"	\$25.00
Gastrochilus obliquus Miniature Vandaceous with green flowers	\$25.00

Haraella retrocalla	Miniature species from Taiwan with golden	
Flowers with a red brown lip.	BS plants that flower for months	\$12.50
Laelia lundii 'Laurelwood'	Most vigorous mini I have 3 inch BS	\$25.00
Laelia milleri	Sibling cross of the red form 2 inch BS	\$25.00
Laelia pumila 'Big Ben'	AM/AOS BS divisions	\$75.00
Laelia pumila v. coerulea ('Donna Rosina' x 'Gold Country')	mount or 2"	
Seedlings about 1 year from flowering		\$35.00
Laelia purpurata v. flamea	Super sibling cross out of Brazil 2"	\$12
Laelia purpurata fma. Schusteriana	line bred for deep color 2"	\$12.50
Leptotes bohnkianum	Light pink flowers on this rare species BS	\$20.00
Leptotes pohlitinocoi	Mini from Brazil with rose flowers BS	\$20.00
Masdevallia minuta 'Sharon Kay'	HCC/AOS Mini with crystalline white	
Flowers 2 inch BS		\$20.00
Masdevallia Red Wing	Warm growing infracta hybrid with deep	
Fuchsia flowers 3" BS		\$20.00
Meiracyllium trinasutum	Mini species with fragrant rose flowers	\$35.00
Mystacidium braybonae	Mini African with long lasting white	
Crystalline flowers	BS on mount	\$25.00
Mystacidium capense	Mini African species with clouds of flowers BS	\$18.00
Paph. helenae	Smallest member of the genus, a true mini. NBS	\$18.00
Paph. Prime Child 4N plants	from OZ with great flowers BS	\$35.00
Phalaenopsis fuscata	Novelty phal with yellow & chestnut flowers that are	

Lightly fragrant. BS	\$25.00
Phalaenopsis hieroglyphyca Slightly fragrant crystalline ivory flowers with maroon markings BS	\$25.00
Phalaenopsis lobbi Vietnam form on mount BS	\$35.00
Phalaenopsis Kuntrarti Rarashati 'Copperstate' HCC/AOS Mother Divisions of this mini that flowers all year long 3 inch	\$20.00
Phalaenopsis zebrina The zebra like novelty phal with white flowers heavily Barred maroon. BS	\$25.00
Pleurothallis grobyi Mini warmth tolerant 2 inch BS	\$15.00
Pleurothallis leptotifloia 'GC' vigorous mini with yellow flowers	\$15.00
Podangis dactyloceras Miniature African species with paper white Flowers 4 inch BS	\$20.00
Promanea xanthina Miniature fragrant yellow likes low light 2" BS	\$20.00
Rennanetia Sunrise (Neo. falcata x Ren. imshootiana) Orange to red flowers on these Miniature Vandaceous plants	\$10.00
Rlc. George King x C. Circle of Life Six inch fragrant orange flowers on compact plants 2 inch	\$12.50
Rlc. Helen Brown x C. Circle of Life 1 <sup>st</sup> to flower in 2 inch pot was a 5" full round fragrant orange flower NBS 2inch SUPER	\$12.50
Rlc. Little Toshie x Rth. Orchidglade 4 inch yellow to apricot flowers on compact plants that are fragrant 2 inch NBS \$10.00 4 inch BS	\$18.00
Sarcochilus hartmannii v. albus 'Monster' AM/AOS x self	\$20.00

Sobennikoffia robusta African species 3 inch BS	\$25.00
Vanda cristata Compact green with plum lip and fragrant 2" NBS	\$12.50
Vanda Green Light Mini fragrant green Vanda for the home 2" BS	\$12.50
Vanda vietnamica Mini green for the home 2" BS	\$15.00
Zygopetalum Advance Australia 'HOF' AM/AOS fragrant mini	\$25.00
Zygoneria Adelaide Meadows Bright lime green flowers with a deep Indigo lip. Fragrant too! 2" NBS	\$12.50

#### MERICLONES

C. Lake Tahoe 'Blue Sky' Long lasting 5 inch blues with an indigo lip and Intense fragrance. NBS 2"	\$12.50
Rlc. Little Toshie 'Gold Country' This is the best compact growing Cattleya ever with 5 inch bright yellow flowers and deep red lip. BS 3"	\$25.00
C. Love Knot 'Blue Moon' 5 inch fragrant blue flowers that are very long lasting. Plants flower twice a year. NBS 2"	\$12.50
Cattleya Gratrixiae 'Rotors' HCC/AOS Miniature red cattleya that flowers several times a year. BS 2" mother divisions	\$45.00