

THE WAY

AUGUST 2021



WROXALL'S PARISH MAGAZINE

Produced and financed by Wroxall Parish Council

Dear Residents

The council met on the 12th July and received a presentation from Laura Moran customer Service Manager for Southern Water. Several residents of Stenbury View attended the meeting as they have been adversely affected whilst the routine maintenance took place at the reservoir particularly in respect of reduced pressure and the difficulty, they had in contacting Southern Water. The issues have been resolved and Laura apologised on behalf of Southern Water as the service had fallen short. The routine maintenance takes place every three years. Not all areas of Wroxall are supplied by this reservoir.

The council will be installing litter bins and a seat at the recreation ground.

6 local organisations successfully applied for grants from the Parish Council.

Wroxall Mini Bus £500

Wroxall Primary PTA £400

Wroxall General Welfare £500

Methodist church £300

Ventnor physically handicapped £200

Stenbury Hall £500

There are still incidents of fly tipping in the car park and Stenbury down.

Adrian Gallop, Chairman

POLICE INFORMATION



Garden Security

There are several things you can do to improve the security in your garden.

Sheds: Repair rotten or loose slats and consider reinforcing the shed by adding additional panels to the inside structure. Outside door, hinges should be secured with

coach-bolts or non-return screws. Use strong closed-shackle locks.

Register your property. Mark valuable items with your house number, postcode, and register on immobilise.com Tool and ladders: Never leave gardening tools outside as they could be used to gain entry to your house, including ladders, which should be put away, or securely chained up and locked. Take a look at Secured by Design and Hampshire Police sites for further advice. Regards, Michael Thornton, Hampshire Constabulary

Collar Number 13391, Yarmouth Neighbourhood Policing Team West Wight.

PCSO Tutor, DVI Casualty Bureau Doc Team Officer.

Non-emergency Telephone Number 101



HOORAY! WELFARE COFFEE MORNING IS BACK TUESDAY 3RD AUGUST, 10AM - 12 NOON ST JOHNS CHURCH HALL

Please come along for coffee, a chat and meet your friends. There has to be a few changes which will take place for a period of time, one of which is there will be no raffle prizes needed. Welfare is taking as many precautions as possible to keep us all safe. It is personal choice for mask wearing on entering the hall. It will be so good to see you all and to have some kind of normality back in our lives. PLEASE SUPPLY COVID VACCINATION CARDS, IF POSSIBLE, TO KEEP US ALL SAFE

Kindest regards from all Welfare Committee Members

for those jobs **outdoors**



MAKITA JANSEN KUBOTA NILFISK HAYTER TORO CUB CADET AND MANY MORE



STUBBINGS BROS
meeting your machinery needs

call us on **551443**
Chale Green, IW • jobsoutdoors.co.uk



- **JOINERY**
- **KITCHENS**
- **BATHROOMS**
- **FITTED FURNITURE**
- **EXTENSIONS**
- **ALTERATIONS**
- **LOFT CONVERSIONS**
- **GARAGE CONVERSION**

For all building works call us . . .

☎ **01983 645301**

☎ **07929 040060**

✉ **enquiries@mrcjoinery.com**

🖱 **mrcjoinery.com**

**REPUTATION
BUILT ON QUALITY**

Find us on
f facebook

Sonemarg, Avenue Road, Wroxall, Isle of Wight



Miss Eloise

Fully Qualified and Insured teacher
07548987728 for details

Mondays Stenbury Hall Wroxall

4pm Fun dance class /come and learn routines
5pm kids Ballet 6 upwards (graded UKA)
6pm Adult Ballet teen upwards

Friday Ventnor Baptist Church

7pm Adult Contemporary Dance

Saturday Shanklin old library

10am Melody bear and movement age 2-4
10.45am preliminary ballet (graded UKA)
11.30am Kids Contemporary dance
12.15pm teen contemporary



All COVID Guidelines adhered to
If You Have Symptoms please do not attend



EM CARS

01983 854927

VENTNOR INDUSTRIAL ESTATE, OLD STATION ROAD, VENTNOR

MOT TESTS ~ SERVICING ~ REPAIRS ~ TYRES ~
WELDING EXHAUSTS ~ DIAGNOSTICS ~
BRAKE CHECKS
FREE BULB CHECKS ~ FREE TYRE CHECKS
AIR CONDITIONING ~ PERFORMANCE
ENHANCEMENTS

Alien invasion of Wroxall!

You may have noticed that Wroxall Stream and its surrounds seems to be a particular hotspot for non-native invasive plants species, in particular Himalayan Balsam and Japanese knotweed. Since 2012 Island charity Natural Enterprise has been working with local land-owners and volunteers to tackle the problem. On farmland the situation is much improved, but there are still hotspots within the village where one or both plants are still causing problems.

By law...

... the landowner is ultimately responsible for any plants growing on their land. The landowner does not have to remove them but must not let either of these spread on to anyone else's land or into the countryside. Given the nature of both, it is very difficult to stop them spreading.

Himalayan Balsam

Himalayan balsam is a tall annual plant with pink flowers. It is so prolific (each plant has about 800 seeds) that it outgrows and shades our native plants. Within a couple of years, it becomes the only plant on the riverbank. This detrimental to water voles. It can also cause collapse of riverbanks and hence flooding. Control is very simple; it needs to be pulled out before it seeds. The plant grows and seeds throughout the summer and in to Autumn. Natural Enterprise have volunteers that walk through the river and pull any plants.



What you can do to help

Please pull up any Himalayan balsam you see. You can let it compost, it's not dangerous in itself. Don't wait for Natural Enterprise's volunteers as they may have missed them. Natural Enterprise welcome volunteers to join their twice weekly Balsam Bashing sessions which are mainly based to the north of Wroxall, around Bathingbourne.

Japanese knotweed

If tackled when it is small, and before it gets a chance to properly establish this plant can be eradicated fairly easily. Ideally by a professional, although you can purchase chemical to use yourselves (chemicals available over the counter are not as effective). It is a good idea to get on top of it, as there are many people who can't



sell their houses because mortgage companies won't touch properties where it is. Natural Enterprise have funding to treat Japanese knotweed when it's close to a water course, although they do not offer a guarantee that it will be eradicated (some professionals will be able to). Never try to mow or cut knotweed, as it spreads from rhizomes and fragments of

plants. Do not remove it from your property and be aware it is illegal to take it to the Council tip.

What you can do to help

Please do get in touch with Natural Enterprise if you have this in your garden by a watercourse.

For more details, please contact Carol Flux at Natural Enterprise on 07790 906232 carol.flux@naturalenterprise.co.uk

St. John the Evangelist, Wroxall Priest-in-Charge Revd Kath Abbott Tel. 867034 Church Services

1st. August All-age Communion 10am.

Tuesday 10th. August Holy Communion (BCP) 9.45am.

15th. August Holy Communion 10am.

Tuesday 24th. August Holy Communion (BCP) 9.45am.

29th. August United Service at Newchurch 11.15am.

Notices of services are also on the church noticeboard

WROXALL METHODIST CHURCH

At last, we are able to welcome you back to our Church. We have missed meeting but have to keep safe and obey the rules. Hopefully things will go to plan and we are back for good. Take care and God bless you. Here are the services for August

Sunday 1st August 10 30 am Local arrangement

Sunday 8th August 10 30am Marilyn Hollingshead

Sunday 15th August 10 30am Teresa Preston

Sunday 22nd August 10 30am Local arrangement

Sunday 29th August 10 30am Mr Ray Felton



Cruse Bereavement Care is a well-established national charity. On the Island we have 20 trained bereavement volunteers who can provide confidential, personal support, free of charge. Once allocated to a Bereavement

Somewhere to turn when someone dies Volunteer people are offered up to six-hour long sessions. During COVID this has been by phone and video-conference. We will be providing support at home as well in the future where this is appropriate. Everyone deals with grief differently and having a non-judgement, experienced person to listen in confidence can provide great relief and comfort. Bereavement Volunteers are specifically trained and keep updated throughout the year. If you, a family member, or a friend have been bereaved and need some support contact Cruse Bereavement Care by phoning 01983 523030 or email IsleofWightBranch@cruse.org.uk. There is useful information on the national website www.cruse.org.uk and we have a national helpline 0808 8081677. If you are interested in supporting Cruse Bereavement Care, training as a Bereavement Volunteer, helping with our fundraising activities or being a member of the local committee please contact us using the details above.

Don't ignore
foot pain

Achilles
Tendonitis

Plantar
Fasciitis

Lateral and
Dorsal Pains

Metatarsalgia

Bunions

Morton's
Neuroma

Ingrown
toenail



Isle of Wight Feet

Chiropody • Podiatry • Wellbeing Therapies

Jason Mansell MSSCh • MBChA • MSOE • MIRTE • MSCP • FHPA

6 Cross St, Shanklin PO37 6AT

TEL 864444 www.iwfeet.co.uk

PAGE THE PACKERS

*Removals throughout the UK & Europe
Containerised & Self-Storage Available*



UNIT 7, INDUSTRIAL ESTATE, VENTNOR, ISLE OF WIGHT PO38 1DX

K.P. PAGE PROPRIETOR

Tel: (01983) 852951 Fax: (01983) 855956

Page_the_packers@btinternet.com

Visit our website www.pagethepackers.co.uk

BAR MEMBERSHIP No. P047

IF YOU WANT TO -
reduce stress -improve
posture -ease back pain -
increase flexibility -
strengthen core muscles -
boost stamina

DO PILATES!

with **"This is Fitness"**

CLASSES AT THE SPIRIT
STUDIO SPRING HILL,
VENTNOR EVERY DAY,
MORNINGS AND EVENINGS

Contact KAREN

07890 425169

karen.tif@outlook.com

Award winning gardener
offers a range of garden
work.

Garden design/re-design

Need help with your

garden....? Need advice?

Help to tame an overgrown garden?

Experienced lady gardener can offer designs,
advice, maintenance etc.

Favourable rates according to job.

Phone Terri - 01983 855325



KITS WINDOW CLEANING

Pure Reach High Water Washing
System

Conservatories, Facias, Soffits, PVC

Interior and Exterior Windows

Fully Insured, Free Quotes

C.R.B checked

Tel: 854684 Mob: 07901584896

**ADVERTISE IN THIS
SPACE FOR £12.50 A
YEAR!!!**

**CALL JACKIE ON
07817 634516**

Avon



If anyone would like any products or just a book please call Teresa on 853911

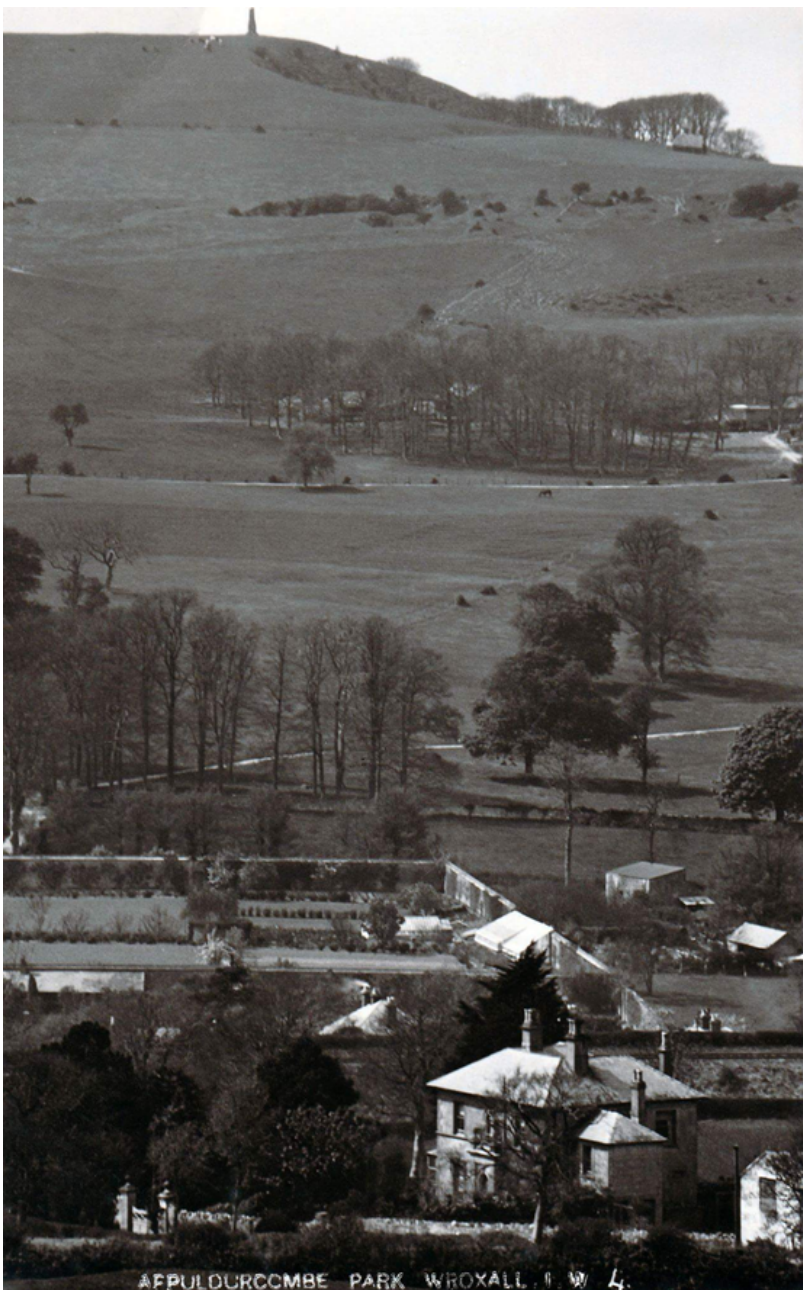
Steve's Gardening Service

Grass cutting, weeding, hedge trimming and strimming work.



Reliable and trustworthy.

Please call 07443 604615



APPULDURCOMBE PARK WROXALL, DORSET

PAST AND PRESENT

This is Appuldurcombe garden's before it became the caravan site. It was used to grow produce for Appuldurcombe house

WANTED

Appuldurcombe Holiday Park urgently require experienced cleaners. Please call 01983 852597 for more details.

Niton Pest Control

Based in Niton, serving the Isle of Wight

Specialising in the removal of:

WASPS, MOLES, RATS, MICE

Prompt, professional, service: BPCA/RSPH Level 2 Qualified

Telephone: 01983 731606 / 07434 597696

www.nitonpestcontrol.co.uk



Wroxall Toddler group



A friendly toddler group for under 5's run by local parents.

Every Wednesday

9:30 - 11:30

(term time)

£1.50 per family

Lots of crafts and activities for the little ones. Also a chance for you to sit down for a cuppa and a slice of cake.

Everyone's welcome

Methodist church hall
3 Station Rd
Wroxall
Ventnor
PO38 3BJ

FACEBOOK: [wroxalltoddlergroup](https://www.facebook.com/wroxalltoddlergroup)

ADVERTISING IN THE WAY

Do you have a business in Wroxall? Do the 870 households in Wroxall know about it? You may advertise online or by other means, however many people still do not have internet access. Did you know that you can advertise in the Way for as little as £12.50 for a year? So, for just over £1 per month you could have a local exposure to an untapped audience. For further details please contact Jackie Gallop on 07817634516 or email jackiegallop@hotmail.co.uk.



PAUL & TAO'S MUSIC LOUNGE

60 HIGH ST, RYDE PO33 2RJ

(next door to Wight Trash Skateboard Shop)

**We sell vinyl records – CD's – Guitars
Amplifiers & Accessories**

WANTED

**Record Collections & Guitars
Elvis Presley – Beatles – 70's Rock
Bands David Bowie etc.**

We look at all kinds of collections

TOP PRICES PAID

Please call Paul 07905 536541

or email: headhunter5469@yahoo.com



WHY NOT PLAY A ROUND OR TWO OR EVEN JOIN? VENTNOR GOLF CLUB

The course with the view,

Established 1892

*Steephill Down Road, Ventnor, Isle
of Wight PO38 1BP*

Tel :01983 853326 or

Email: Secretary@ventnorgolfclub.co.uk

Website: www.ventnorgolfclub.co.uk

Wroxall Primary School News - Summer term 2021

With our transformational building work now almost complete, we have been enjoying using our new spaces within school to the fullest this term: From hatching chicks to launching the Wroxall mile on our fabulous now playground and becoming



involved with the school's carnival week; children have enjoyed a range of enriched learning opportunities.

This half-term, children have taken part in a whole school RE day, immersing themselves with learning about different beliefs and

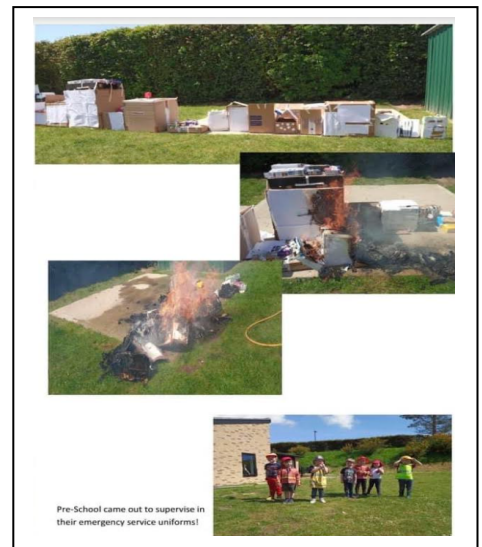
relating these to their own lives.



Children from Year 3 and 4 have been busy preparing costumes and a dance to celebrate school's carnival week and also to launch our Olympic celebrations. They will be performing to the whole school community in July, with the event being filmed to share on our Facebook page.

As part of our geography curriculum, a whole school Olympic celebration day also provided us with the opportunity to find out about, compare and contrast the different countries

of athletes who will be completing in this year's games. It was a chance for children to share what they enjoy about sport by coming to school dressed in different sports gear from horse riders to tennis players.



As we are getting ready to re-launch our school library ready for September, we have been catching members of the school community reading in unusual places.



Our KS1 class have been discovering, first-hand, how the fire spread so quickly during the Fire of London. We had some fire fighters carefully observing. Meanwhile Our Year 6 students are looking forward to their leavers' trip to Tapnell farm and an end of year celebration at Carisbrooke castle.

Key Stage discos will take place in the school field in the final week of term to end a challenging but exciting year. We are looking forward to continuing the next chapter of the Wroxall Primary School journey in September 2021.



Wroxall Primary School



Learning Together

Head teacher: Mrs. Lynn Torrance
Chair of Governors: Mr. Richard May

Wroxall Primary School
Castle Road Wroxall, Ventnor
Isle of Wight
PO38 3DP
Tel. 01983 852290

e-mail: office@wroxallprimary.co.uk

Have you ever considered becoming a School Governor? Wroxall Primary School is looking to recruit a new co-opted member of the governing body. It is a school that's on an exciting journey of improvement at the moment – new head teacher, newly refurbished building, enthusiastic and committed staff and fantastic, enthusiastic children and parents.

The school left the Stenbury Federation to become a standalone school last year, and as such established a new governing body – a very committed group of parents and others who are determined to support and challenge the school's leadership to quickly improve provision, giving children the best possible care, education and outcomes.

Despite the pandemic-related disruption of the last year, the school has moved forward rapidly; leaders and staff are established and the building programme is drawing to a successful conclusion. Now would be a very exciting time to join the governors in embedding this progress and continuing to move forward. Governance often sounds overwhelming in terms of commitment, but we have learned a lot over the past year about how to meet virtually, how to be 'smart' about monitoring and how to focus our questions and requirements of leaders. All of the existing governors have other commitments – and the head has a school to run – so it is in everyone's interests not to let the role become a burden.

If you are interested in joining us as we continue to move Wroxall forward and want to find out more about what the role involves or to visit the school please get in touch, with Lynn Torrance (Head teacher), Andy Creed (Clerk to the Governing Body), or me via the school. We'd be *delighted* to tell you all about it!

I hope to hear from you soon – the children deserve the best we can give them.

Yours sincerely

Richard May
Chair – Wroxall Primary School Governing Body



TOOGOOD

GARDEN SERVICES



- Total Garden Tidy & Clearance
- Border Design & Consultation
- Regular Garden Maintenance
 - Lawn Mowing & Turfing
 - Pruning & Chainsaw work
- Strimming, Hedge Cutting & Planting

Island
wide
service

Fully insured and qualified for all domestic gardens and business premises

 **07887 421 350**

 toogy9@gmail.com

 Find us on facebook



Dear Residents,
Island Roads have put a job in for the trees at Greenbank to be dealt with. Hopefully this will have been completed by the time this edition of the Way is delivered. I have been making representations for years about this matter and it will be good to have it resolved. There was another water leak outside in the road near Greenbank. I reported this to Southern Water and it should have been dealt with.

Stenbury View - Unfortunately not all of Stenbury View has been resurfaced despite the fact that there were markings all along. Apparently, the sections that were left did not score low enough to be done. This is very puzzling and I have and will continue to make representations to have it completed. More rubbish has been removed from the car park after being reported by the Environment Officer and there were also reports of black bag rubbish being dumped on Stenbury Down. I would like to express my thanks to residents who have been rubbish collecting. I have also reported a hole in the junction at High Street, St Martins Road. The surface by the church bus stop is very lumpy and has been reported again. As always please be aware of scams. There are many telephone ones purporting to be Banks, HMRC, Amazon, appliance insurance and many more. Please be cautious, I still have no cold calling stickers; so if anyone would like any please get in touch. Please also be careful online especially emails with suspect links in them. Because Wroxall Parish Council and Ventnor Town Council meetings are on the same evening each month I will be attending each on alternate months. As always please do not hesitate to get in touch with any issues. Mobile 07594581076 or landline 854203 email helenandrodney@hotmail.com
Kind Regards Rodney Downer



“Enhanced DBS checked & fully insured”

Dog walking • Animal taxi service

Pop in service • Pet sitting • Daycare

Overnight stays in your own home

Contact Joannah Crawford on 07764 407387
Email : angeljoannah@aol.com



www.petalls.co.uk

NPC PROPERTY SERVICES

Lime Mortar re-pointing specialist

Interior/Exterior painting, Fencing & Roofing

Decking, Facias & Gutters

Free advice and estimates

Tel: 857042 or Mobile 07821 447270

Wroxall Clubs and Organisations

Are your contact details listed in the WAY? If not please email and we will add your details in. If you wish to discuss please call me, Jackie Gallop, on 07817634516



Stroke Recovery Service, Isle of Wight

Information, advice and emotional support for the impact of stroke and support for

those whose communication has been affected by stroke

Contact us if you or someone you care for has had a stroke and would like support

Stroke Association Support Co-ordinators:

Mary Barton, Heidi Kurowska and Tina Cutting

☎ 01983 898301 📧 iow@stroke.org.uk

☎ National Helpline 0303 3033 100

🌐 www.stroke.org

OBITUARY

MERCY BYATT

Wroxall's oldest resident passes away

Mercy Byatt, known as Edy, who we did a tribute for on her 100th birthday, has sadly passed away. She died on June 9th aged 101 and a half. She stayed at home right up until the end. The funeral was held on 21st June at the crematorium. She will be sadly missed by her neighbours in Stenbury View and her nephew.

DOREEN JENKINS

Doreen Jenkins, formerly of Crispy Fry, died on the 8th June aged 86. Some of you may remember her. She lived on the mainland.






As the long established John Deere dealer for the Isle of Wight, we offer a full range of walk behind, autonomous and ride on lawn mowers supported by our qualified sales, parts and service teams, who can offer advice and discuss your needs. Why not visit us and explore the range?

Pritchetts Way, Rookley Industrial Estate, Rookley, Ventnor, PO38 3LT.

T: 01983 721 426

W: huntforest.com

E: info@huntforest.com

   @huntforestgroup

GLYN MORGAN

– Newsagents –



Delivering Newspapers to Wroxall 7 Days Week

Call 01983 862117 for details

26-28 Regent Street, Shanklin.

Dial A Roast

Traditional Home Roast Dinner
Delivery Service

Delivering **EVERY** Sunday to Wroxall

Three choices of meat, seasonal veg with all the trimmings delivered to your home

Call us on **07968 876963** to book your roast.



The **PEARfect** prize!

- 🍏 Help us raise essential funds
- 🍏 Tickets cost just £1 per week each
- 🍏 Cash prize winner EVERY week
- 🍏 You could even win the £25,000 jackpot!

To play now visit:

onelottery.co.uk

and search for: **Wroxall Community**

Supporters must be 16 years of age or older. See website for T&Cs. Closing date for entries: 17th July 2021



EMERGENCY DEFIBRILLATOR – A LIFE SAVER

Please be aware that in cases of emergency there is a heart defibrillator located at Wroxall Primary School for the use of the Village.

Body Shop at Home
Independent Consultant
Buy Beauty at Home with Cheryl
All your beauty needs from The Bodyshop At Home
delivered straight to your door.
Skincare Consultations Free
Find me on Facebook, request a catalogue or telephone me
0771 933 2376

CITIZENS ADVICE BUREAU
Isle of Wight - Call us on 01983 823898
Did you know?

We are a charity that has helped the IW since 1964
We provide specialist services like Tax and Macmillan
Cancer Support

Much of our work is carried out by volunteers
We are a Hate Crime Reporting Centre
Our service is absolutely free to use

Hortus Wares

Est. 2020

Your local Garden Wares Makers that care about each customer's needs.

Greetings, My Name is Joe Hall and I am a Garden Furniture Maker and Designer.
I am based in Wroxall out of my own shed, I have a catalogue of products for purchase and I also
am open to commissions if you need something a bit more personal.

No job too small !

If you wish to get in contact email me or text before phoning, Thanks

Email: joehallrwb@gmail.com Text: 07443 831870



NatWest has launched a new mobile bank which will be visiting Wroxall every Friday between 2.00 – 2.30 p.m. outside the community centre. To find out more information about our new route visit natwest.com/mobilebranch Call **08457 888 444** (open 24 hours) Minicom 0800 917 0562

Island Yoga and Tai Chi

Classes in Godshill Monday, Wednesday & Friday

Tel 07738716244/ 01983 840994

Call now or check the website for more details

www.yogaandtaichi.co.uk



Animals At Home
Pet Care Services

At Animals at Home (Isle of Wight) we offer pet care services, from a small pet to a small holding.

We have a DEFRA approved Animal Pet Ambulance and Pet Taxi service. Animals at Home provide a real alternative to dog boarding kennels and catteries. We

provide specialist care through our pet sitters, dog walkers, pet sitting host families and animal ambulance / pet taxi services. Call us on 01983 242 999



DEADLINE FOR ARTICLES, STORIES OR COMMUNITY NEWS IS 18TH OF EACH MONTH

O.G. DAVIS PLUMBING

Bathrooms

Shower rooms

Full tiling service

No job too small

Fully insured

City and Guilds qualified

07852 739700

Email

ogdavisplumbing@hotmail.com

**Worsley
St Johns Road
Wroxall**

**City & 
Guilds
Qualified**

Soft furnishings, and carpets looking tired, don't replace, have them restored by

ChemDry First The Superior Carpet & Upholstery Cleaners

For your free quote contact us on **295518**

100% Satisfaction Guarantee, If you are not satisfied, you don't pay.

Domestic and Commercial - Carpet, Upholstery, Drapes

-Pet Odour Removal - Leather and Vinyl - Oriental Rugs - Fire and Flood Restoration

FAST DRYING TIMES

See our Facebook and Twitter pages for latest offers

FREE Protection on Every Clean



Island
MEMORIALS

Bespoke, Traditional and Contemporary Memorials
Crafted in Natural Stone, Granite & Marble.
Additional Inscriptions & Renovations.

Contact: Jason French

Tel: 01983 866495

www.islandmemorials.co.uk islandmemorials@gmail.com

Providing A Complete Monumental Masonry Service
to the Island Community



GET2CONNECT



If you have problems using tech, then I can help!

Whether it's a pc, laptop, tablet or a smartphone I can show you how to make it work for you, from sending e-mails, to using Microsoft Office, or just how to get on-line. Also, I can arrange tailored tuition.

Reasonable rates.

Contact Mike@get2connect.co.uk or Tel: 01983 211571

Chris Preston

Painter, Decorator and

Maintenance

1 Castle Lane

Wroxall

01983853911 Mobile: 07946202704

**DID YOU KNOW? THE ISLE OF WIGHT IS THE
SUNNIEST PLACE IN THE UK.**



Now Britain is not especially known for its reliable summer and sunny days! But if you are looking for the places that get the most sun in the year then that is the Isle of Wight!

One of our great Isle of Wight facts is that it gets 1800 to 2000 hours of sun which actually works out more than some of Spain.

MG CARPENTRY

CARPENTER & JOINER

30+ Years Experience
City and Guilds Qualified
Fully Insured

All Aspects of Carpentry Undertaken

- Kitchens • Flooring • Bookcases • Wardrobes • Doors •
 - Locks fitted • Bespoke joinery • Window Repairs •
 - Insurance Work Undertaken •

• **TEL: 01983 852392** • **MOB: 07843 389150** •

• mgcarpentryiow@aol.com •

• The Maples, Park View Close, Wroxall, PO38 3EQ •

William Hall

INDEPENDENT FUNERAL DIRECTORS

Established 1992



www.williamhallfuneraldirectors.com

OFFICE AND CHAPELS (24 HOURS)
(01983) 868688

PERSONAL ATTENTION DAY OR NIGHT

Full funeral services arranged to individual requirements

- PRIVATE CHAPELS OF REST •
- FLEXIBLE PAYMENT PLANS • CARING FOR THE COMMUNITY •



Golden Charter
Funeral Plans



Springbank, Winford Road, Newchurch
Sandown, Isle of Wight, PO36 0JX



SPRINGWOOD

Woodland Burials



For details of burials that have important benefits for the environment
contact

WILLIAM HALL INDEPENDENT FUNERAL DIRECTORS

Springbank, Winford Road, Newchurch, Sandown
Isle of Wight, PO36 0JX

(01983) 868688

www.springwood-cemetery.com

D Honey Decorators

ESTABLISHED
FOR OVER
40 Years



*Family business, City & Guilds
qualified and available Island wide
and mainland*

Worked with Laura Ashley personally
and other designers, wallpapering of
specialist paper, tiling and all aspects
of decorating covered. Interiors and
Exteriors. Can provide references if
required. Friendly, punctual and
professional. See our facebook page
<https://www.facebook.com/Dhoneydecorators/>
and also our yellow pages
website on
<https://www.yell.com/biz/d-honey-decorators-ventnor-3355554/>
Discounts for OAP's

Call us today!

Free no obligation
quote

Contact Info

07878661761 or
01983 855769

Stenbury Hall - Community Centre

OPEN FOR BOOKINGS

for parties, events and activities after restrictions lift on the 19th July

New booking phone number coming soon, in the meantime for all bookings please visit our Facebook page @wroxallcommunityhall

Weekly Clubs and Activities –

Mondays

Taekwondo - 6pm till 7pm

Badminton 7:30pm onwards

Dance Vibez 4pm till 4:45pm ages 6+
 5pm kids ballet
 6pm adult ballet

Tuesdays

Senior Badminton 10am till 12pm

Thursdays

Short mat bowls 10am till 12pm

Badminton 12:30pm till 2:30pm

Burlesque Dancing – 7pm till 8pm

For details on all clubs please visit our Facebook page @wroxallcommunityhall and send us a message

Pop-Up Roller Discos – For Roller Skaters and Roller Bladers – 2-hour sessions usually held on a Saturday from 5pm till 7pm for all ages and abilities - £3 per person – See facebook for details

Food Bank – Mondays and Thursdays, open 8:30am till 10:30am, our foodbank is re-stocked on a weekly basis, all in need are welcome

Coming Soon – Memory Lane – a photographic history of Wroxall

Roller Disco

The Pop-Up Roller Disco is exactly as it sounds. Coming to Wroxall Community Hall roughly twice a month on Saturday evenings from 5pm till 7pm. Born out of the massive loss felt by the Island community when the Ice Rink closed, there has been a growing interest ever since for roller skating and rollerblading. A group of people came together across the Island looking for venues where they could skate. One of those skaters, Wroxall resident Jessica Steele, now runs the Pop-Up Roller Disco on behalf of the hall. There's music and a space to skate... what's not to like? £3 per skater helps to cover hall costs. Free car park over the road. For the time being it's 20 skaters only due to covid restrictions so attendance must be confirmed and walk ins are not allowed just yet. Members are asked to please bring correct money. It's open to all ages and abilities and you do need to bring your own skates.

USEFUL NUMBERS

TRADING STANDARDS	823371
WROXALL PRIMARY SCHOOL	852290
GENERAL WELFARE (coffee morning)	718151/07951653182
BADMINTON CLUB	854130
BADMINTON CLUB SENIORS	855658
BOWLS CLUB (short mat)	852948
WROXALL BROWNIES	852359
COMMUNITY CENTRE	Wroxallcommunityassociation@gmail.com
GIRL GUIDES	854016
<u>MINIBUS ASSOCIATION</u>	BOOKINGS 853076
METHODIST HALL BOOKINGS	Teresa Preston – 853911
ST JOHNS HALL BOOKINGS	Judith Pearce - 857165
<u>IW COUNCILLOR Rodney</u> Downer, Oaklea, Grove Road, Wroxall PO38 3BL	
Phone: 854203	Email: helenandrodney@hotmail.com

PARISH COUNCILLORS

Chairman, Adrian Gallop, Barn Court, Redhill Lane 840127
Email: jackiegallop@hotmail.co.uk

Cheryl Watts, 17 Mountfield Road 07719332376
Email: Buddylove476@hotmail.co.uk

Helen Little 07850125245
Email: helen.little@rocketmail.com

Kai Wacker, Kaimar, 5 Brookside Crescent PO38 3BB 07551 088602
Email: kaiwacker@gmx.co.uk

Lorraine Witt 07534796901
Email: Lorrainew14@hotmail.com

CLERK TO THE COUNCIL: Michael Taplin, Flat 8, Roxan Villa, 33 Landguard Manor Rd, SHANKLIN, PO37 6EA Telephone/Fax 01983 862810 Email: miketap@globalnet.co.uk All enquiries regarding the recreation ground.

Isle of Wight Councillor for Wroxall, Lowtherville and Bonchurch
Rodney Downer, Oaklea, Grove Road, Wroxall Po38 3BL Phone 01983 854203 Email helenandrodney@hotmail.com

Disclaimer:

All articles and advertisements are taken in good faith. We cannot take responsibility for any legal queries resulting from these. Submitted articles do not necessarily reflect the view of the Parish Council. We reserve the right not to print submitted articles, letters or advertisements.