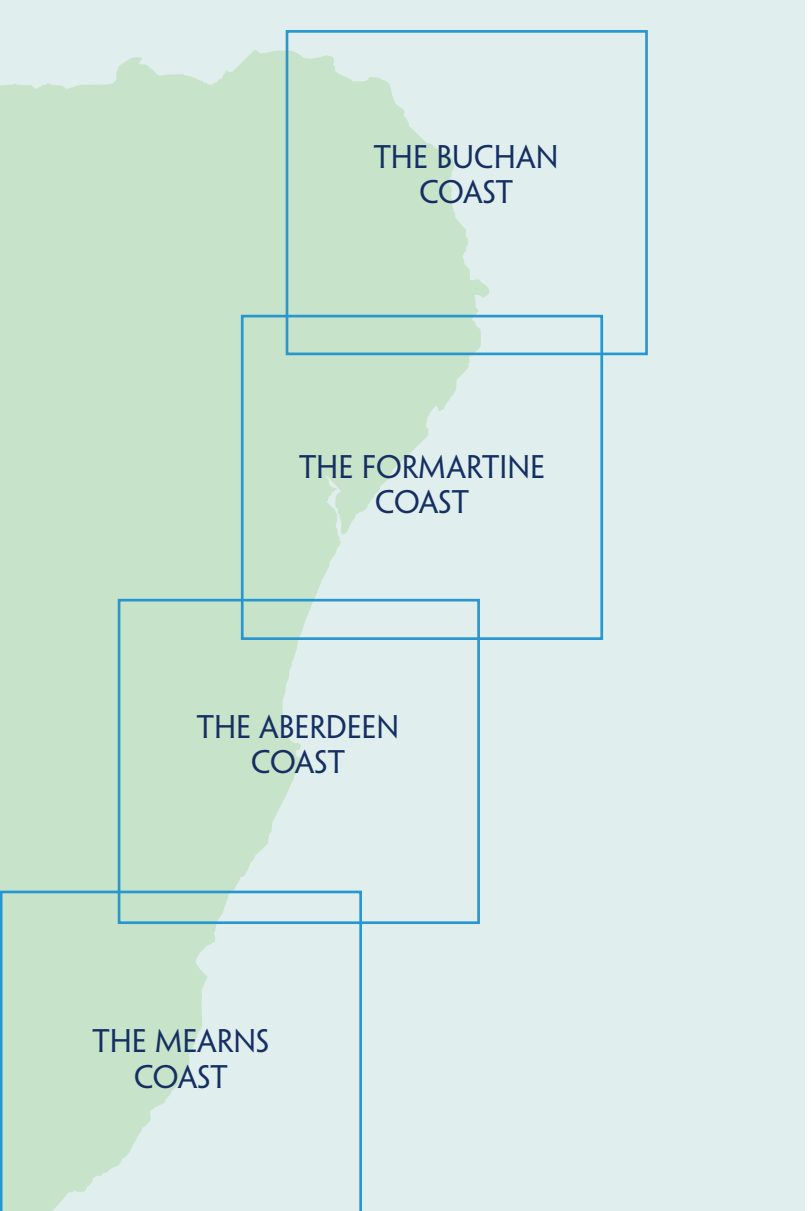




THE BUCHAN COAST

1st Edition © 2021

THE DISCOVER MAPS SERIES



Through our Discover maps project, we are creating a new and unique series of 4 maps covering the Aberdeen and Aberdeenshire coast...

We are looking to include memories and short stories of residents and visitors who have spent time in the area.

- Do you have memories of a favourite place?
• Have you seen anything special, interesting or just the mundane, but is an important memory to you?
• Have you worked on or around the coast or even just remember some favourite holidays or pastimes?
• Do you know of any tall stories that might be true or just legends that continue to grow?

So, we would love to capture some of your thoughts for posterity on our maps. We hope this project will continue to grow and become a social story of the area and its people.

Any information provided will be anonymised and may be edited by EGCP. Thank you in advance for helping us create these truly original maps. Please contact us at discovermaps@egcp.org.uk

KEY

- People & Culture
• History
• Nature
• Memories
• Golf Course
• Forest
• Park
• Outdoor Garden
• Walk A (see details on reverse)
• Walk B (see details on reverse)
• Railway line
• Old railway route

Main map area containing Fraserburgh, Inverlochty, Cairness, Lomnay, Crimond, Fetterangus, Rora, St Fergus, Peterhead, Boddam, and Cloia. Includes various landmarks, fishing industry information, and a detailed key.



The fishing industry

Do you ever think about the effort that goes into putting food on your table? Methods of fishing constantly evolve and there is now a recognition that fish stocks need to be managed sustainably...

Know your catch

- Pelagic fish such as sardine, mackerel, herring, and tuna are found in the upper water column.
• Demersal fish live in the lower water column and include cod, haddock, whiting and hake.
• Seabed species include flatfish such as halibut and turbot, and shellfish such as prawn, crab, shrimp, and scallop.



Herring

It is hard to underestimate the effect that the rise and fall of the herring fishery had on the coast of Scotland. At the height of the herring boom in the early twentieth century there were over ten thousand herring boats fishing in Scotland...



Mackerel

Mackerel spend the winter in deep water waiting for the return of warmth and the accompanying explosion of life. They form huge shoals before appearing close to the coast in the late summer...

Cod

The Atlantic cod is a cold-water species that can grow to the size of a large human - 200cm and 50kg being the largest ever caught. They have long been a popular food source...

Haddock

Haddock are very similar to cod and again can be preserved. It tends to be smoked rather than salted. Finnan haddock is a regional smoking method with green wood and peat...

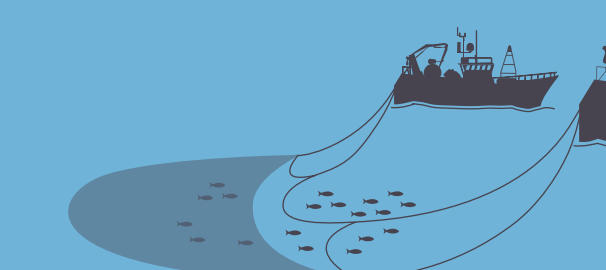
Hake

Hake have been somewhat undervalued as a culinary fish with most caught in Scottish waters exported to Spain, where they are very popular.

Nephrops

Also known as Scampi or Langoustine. They live in burrows in muddy habitat. They are normally caught by pulling a low net along the seabed.

Types of fishing boats and gear



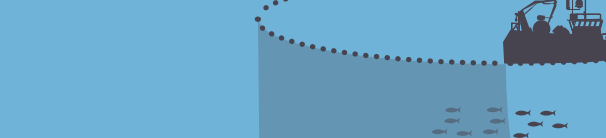
Pair trawler

Pair trawlers work as a team to efficiently cover a large amount of water with the minimum amount of fuel. Each boat is connected to one side of the net working as a team...



Purse Seine

Large pelagic trawlers can also use a method of fishing called purse seine. A giant net with weights at the bottom and floats on top is set into the sea creating a giant curtain...



Creel boats

They use static gear such as lobster pots that are baited and dropped along the seabed and collected at a later time. These boats are often dual purpose and are also used to catch mackerel in season using a long line...



Nephrops trawler

Nephrops are normally caught by pulling a low net along the seabed. This net can also sometimes involve pulling a rope along the mud that sticks the nephrops towards the net...



Key

- People & Culture
• History
• Nature
• Memories
• Golf Course
• Forest
• Park
• Outdoor Garden
• Walk A (see details on reverse)
• Walk B (see details on reverse)
• Railway line
• Old railway route

