



International
guide 2021/22

Contents

Welcome	2
Academic life	4
Careers	6
City	8
Accommodation	14
Support	18
Societies and sport	20
Fees and scholarships	22
Entry requirements	24
Visas	25
Applying	26
Courses and programmes	28
Location	40

10

Top 10 in the UK for employability

(QS Graduate Employability Rankings 2020)

9

Ranked 9th in the UK

(QS World University Rankings 2021)



Contact us

University of Bristol
Beacon House
Queen's Road
Bristol BS8 1QU, UK

Tel **+44 (0)117 394 0229**

Undergraduate email
choosebristol-ug@bristol.ac.uk

Postgraduate email
choosebristol-pg@bristol.ac.uk

bristol.ac.uk/international-21

150

Students from more than 150 countries

58

Ranked 58th
in the world
(QS World University Rankings
2021)



Welcome

The University of Bristol enjoys an international reputation for high-quality education and research. From our beginnings in 1876 through to today, the work of our staff and students resonates across the world.

Bristol is one of the most popular and successful universities in the UK, home to nearly 25,000 undergraduates and postgraduates. Around one quarter of our students are international, helping to make Bristol a friendly and diverse community.

As a research-intensive university, we aim to tackle some of the world's greatest challenges. Join us to work at the cutting edge, learn from academics at the forefront of their fields, and be supported to thrive in your studies.

Bristol was the first UK university to declare a climate emergency. With an ambitious green strategy and innovative environmental research, sustainability remains key to our vision of the future.

Living and studying at the heart of Bristol, one of Europe's most exciting, creative cities, you'll find a world of opportunities close to campus.

'I chose Bristol because I knew it would provide an excellent academic experience in a comfortable and beautiful city. Not too big, not too small - everything about Bristol is ideal. It's a city that cares for the environment, for its people, and for living a good life.'

Juan Pablo Panama (BSc Politics and International Relations)





Joint 5th in the UK
for research
(*THE* analysis of REF 2014)



Academic life

Renowned for its outstanding academic environment, Bristol is the place to reach your potential.

Inspired by research

As a member of the Russell Group and the Worldwide Universities Network, Bristol is among the UK's leading research universities. Our curriculum is informed by the latest research, and our taught degrees are led by expert academics working at the leading edge of their subjects.

Choice and flexibility

We offer more than 600 undergraduate and postgraduate degrees in a comprehensive choice of subjects, many with flexible unit choices. See p28 for a complete list of our degrees.

Invested in our facilities

With 24-hour libraries, state-of-the-art laboratories and specialist equipment, our city-based campus is designed around you. Exciting new projects include the Campus Heart programme, which is transforming the centre of our main campus into a vibrant student hub. And we're developing a new world-leading campus in the heart of the city, focused on digital, business and social innovation.

'Bristol is one of the top-ranked universities in the world, and you can feel that from the first minute of being here. Everything from the facilities to the lectures is designed according to top academic standards.'

George Greece (PhD Electrical and Electronic Engineering)

Your career starts here

We prioritise your career, with a range of opportunities to help you unlock your future and get the job of your dreams.

Stand out from the crowd

Bristol graduates are highly sought after by employers in the UK and overseas. The University is in the UK's top ten for employability (QS Graduate Employability Rankings 2020), scoring particularly highly on employer reputation.

Many of our degrees are accredited by professional bodies, societies and institutes, meaning your degree will be recognised widely around the globe.

An international Careers Service

Whether you plan to stay in the UK or return to your home country after graduating, our Careers Service can support you throughout your studies and for up to three years after graduation.

We host one of the largest careers programmes of any university – more than 300 employers visited our campus in 2019, offering presentations, networking opportunities and workshops. Our online portal can help you find job vacancies and paid internships, and provide practical advice and resources for CV writing, applications and interview preparation.

Industry insight

Many courses, such as those in engineering, law and health sciences, offer professional mentoring schemes and the chance to study in industry during your degree.

Enhance your degree

Alongside your studies, you can work towards the optional Bristol PLUS Award, which recognises your development through work experience, volunteering and extracurricular activities and is endorsed by a range of leading recruiters.

You can also boost your career prospects and personal development by spending time abroad during your studies. Many undergraduate degrees allow you to spend a semester or a full year overseas, or you can take part in a shorter summer programme.

Launch your business

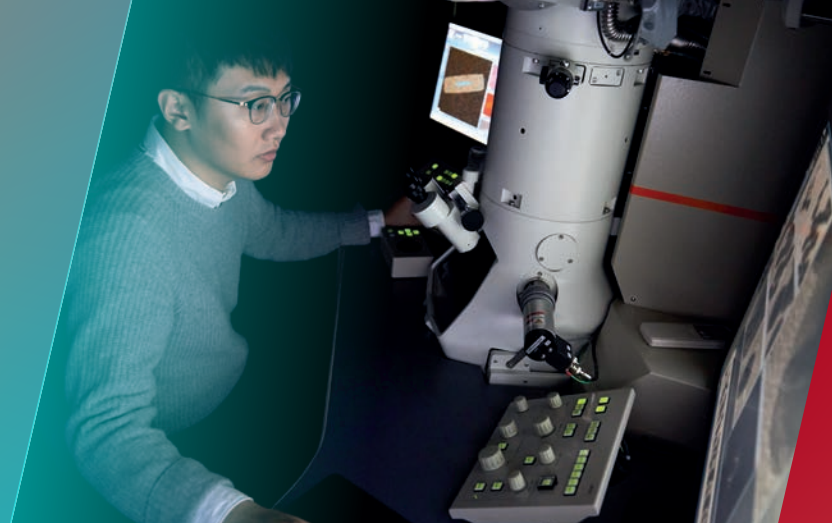
Bristol actively encourages the innovators and entrepreneurs of the future. Our Basecamp Enterprise Team provides guidance, workshops and support to help you develop your entrepreneurial skills and pursue your startup ambitions.

Benefit from our connections

The Bristol network consists of nearly 170,000 alumni across 191 countries, with experts and influencers across every industry sector. You can connect with alumni through our in-country networks, or join Bristol Connects, our online alumni networking platform.

'I really like the Careers Service. There are talks and workshops on different types of employability skills, and employer presentations where you can ask questions directly to your dream company or build connections.'

Cindy Hong Kong (BSc Economics and Management)



A city with soul

Bristol is steeped in history and alive with innovation. It's a creative, inspiring city where everyone is welcome.

Nestled in south-west England, Bristol is the UK's eighth largest city.* It has all the energy of a bustling urban metropolis, but with a friendly, relaxed atmosphere that will help you feel at home. We are lucky to have our University campus near the centre of Bristol so you can enjoy everything the city has to offer.

We are proud of our multicultural community. Bristol welcomes people of all faiths and none, with at least 45 religions represented in our city. Award-winning restaurants serve delicious food from all over the world, including vegetarian, vegan and halal options.

Our compact, diverse neighbourhoods are made for exploring on foot or by bike. On your travels, you're sure to come across one of our 400+ city parks – proportionally more than any other UK city.

Bristol is a green city that shares our commitment to protecting the environment. It's a former European Green Capital and the UK's first cycling city, and aims to become carbon neutral by 2030.


Our city embodies the best of British culture from day to night, with streets full of colourful art, quirky independent shops and cosy cafés. Music, theatre and film lovers will be spoiled for choice, with dozens of eclectic venues across town.

*when defined by Primary Urban Area, centreforcities.org 2017

A diverse and welcoming community, Bristol is home to people from more than 187 countries, speaking 91 languages
(The Population of Bristol, Bristol City Council 2020)

187

The student view



'The creativity and art of the city make Bristol very special - from the famous Clifton Suspension Bridge to surprising art by Banksy.'

Prekshi India (LLB Law)

'Bristol is a beautiful city. It's not too small but not huge, and not as crowded as London.'

Faris Saudi Arabia (IFP: Science, Technology, Engineering and Mathematics)

'It's a vibrant city full of entertainment possibilities - I like the huge variety of places for nights out.'

Eduardo Mexico (MSc Advanced Mechanical Engineering)

'I love the parks and green spaces. Going for a walk or hanging out with friends at Bristol's various parks is truly lovely and relaxing.'

Nhu Vietnam (MSc Education: Learning, Technology and Society)

'When I need a break, you'll find me at the harbourside. It's a fun place to sit and enjoy the scenery.'

Jane Nigeria (PhD Education)

🕒 Approximate walking times from the main Clifton campus

The **West Residential Village** offers a range of accommodation surrounded by Clifton's leafy squares, Georgian architecture and café culture.

Take in the view from Cabot Tower or relax with a book on Brandon Hill.
🕒 10 minutes

Our **North Residential Village** is home to much of our catered accommodation and our outdoor sports facilities. Bus services run to campus day and night.

Clifton campus
Whether you want to study, socialise or relax, our main campus offers study lounges, libraries, gardens, cafés and a newly renovated sports centre.

Langford campus
Bristol Veterinary School is 14 miles south of the city on its own countryside campus.

The harbourside is a cultural hub, buzzing with galleries, independent cinema and weekly markets. Festivals and stunning sunsets make this a year-round hotspot.
🕒 15 minutes

Break for lunch and visit the shops along Park Street. At the top is Wills Memorial Building, home to one of nine libraries and our graduation ceremonies.
🕒 5 minutes

The streets of Stokes Croft boast colourful murals and independent bars, restaurants and music venues.
🕒 15 minutes

Wapping Wharf and Spike Island offer arts events, exciting cuisine and waterside hangouts – summer favourites for Bristol students.
🕒 30 minutes

Temple Quarter Enterprise Campus
Work is underway on our ambitious new campus, which is part of a development zone in one of Europe's biggest urban regeneration programmes.

The **East Residential Village** is centrally located and offers a range of self-catered residences.

Your new home

Settling into a new city can be one of the most exciting parts of university life. Our friendly Accommodation Office will help you feel at home.

Guaranteed accommodation

We guarantee a place in our residences for all new first-year international undergraduates and postgraduates, including pre-sessional and foundation programme students. For full conditions and how to apply, visit bristol.ac.uk/accommodation-guarantee for undergraduates or bristol.ac.uk/accommodation/postgraduate-guarantee for postgraduates.

A variety of residences

Our Student Residential Villages offer ready-made communities to help you settle in to life in the UK. Across these villages, you can find a range of residences to suit a variety of tastes and budgets, from shared Georgian townhouses in colourful Clifton to modern flats in the city centre.

Security and support

Our residences are safe and welcoming environments, with 24-hour security and round-the-clock assistance from specially trained staff. You can take part in a range of events and activities in residences, including formal meals, theatre productions, exercise classes and sports leagues.

Typical costs

You can choose from self-catered residences – where you have access to a kitchen to cook for yourself – or catered accommodation, which includes two meals a day.

Accommodation costs vary according to location, facilities and room type, but the table below provides an indication of typical fees. These include a bus pass, internet, heating, electricity, a social fund contribution and basic contents insurance.

TYPICAL ACCOMMODATION FEES

Self-catered	Cost per week
Single room	£111 to £187
En suite room	£167 to £182
Studio	£207 to £267
Catered	Cost per week
Single room	£186 to £203
En suite room	£207 to £217
Studio	£261 to £267

These fees are per person and based on 2020/21 rates. Figures rounded to nearest pound.

Private accommodation

If you prefer to rent privately, our dedicated advisers can help with everything from budgeting to landlords. Learn more at bristol.ac.uk/accommodation/privately-rented.



Our residences

Our University residences are more than just places to eat and sleep – they are lively communities of students from around the world.

Here are just some of our residences. Explore all your options at bristol.ac.uk/accommodation.



**Hiatt Baker Hall
North Residential Village**
Undergraduate residence
747 places
Catered and self-catered
2.2 miles to campus
From £152 per week



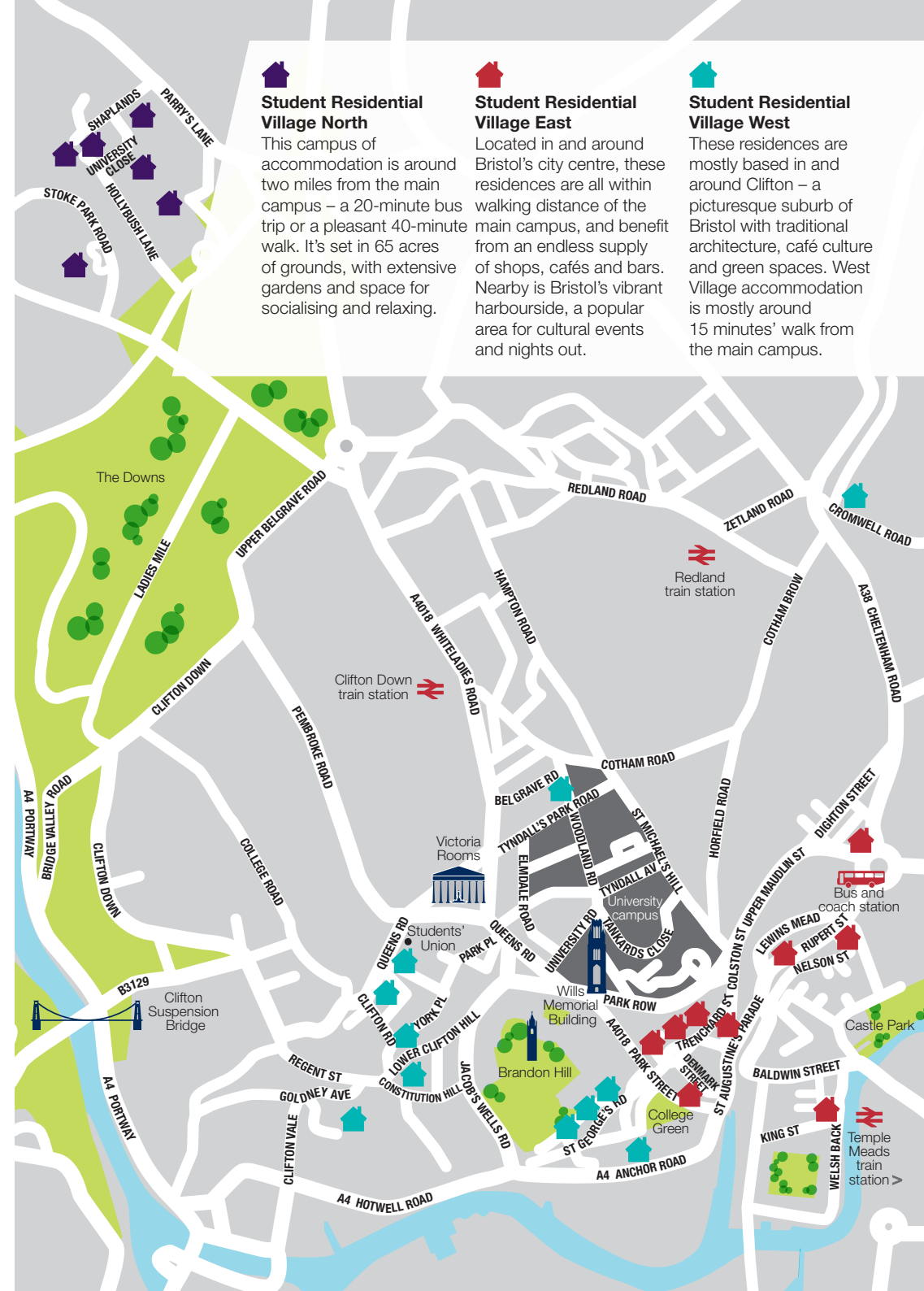
**Print Hall
East Residential Village**
Postgraduate residence
170 places
Self-catered
1.3 miles to campus
From £217 per week



**Manor Hall
West Residential Village**
Undergraduate residence
258 places
Self-catered
0.7 miles to campus
From £111 per week

‘The community and support I had in student accommodation were immense. I made friends I know I will carry with me for the rest of my life.’

Raeesa Canada (LLB Law)



Student Residential Village North

This campus of accommodation is around two miles from the main campus – a 20-minute bus trip or a pleasant 40-minute walk. It's set in 65 acres of grounds, with extensive gardens and space for socialising and relaxing.

Student Residential Village East

Located in and around Bristol's city centre, these residences are all within walking distance of the main campus, and benefit from an endless supply of shops, cafés and bars. Nearby is Bristol's vibrant harbourside, a popular area for cultural events and nights out.

Student Residential Village West

These residences are mostly based in and around Clifton – a picturesque suburb of Bristol with traditional architecture, café culture and green spaces. West Village accommodation is mostly around 15 minutes' walk from the main campus.

Supporting you

Our Student Services are here to support all aspects of university life, so you can make the most of your time at Bristol.

A warm welcome

When you arrive in the UK you'll be met by friendly student ambassadors at main airports and transport hubs, who will direct you to the University. Our International Welcome Lounge is a great opportunity to meet other new students and get your questions answered.

Academic support

Most taught students will be assigned a personal tutor to meet with you regularly, provide pastoral and academic support, and direct you to specialist services. Research students will receive similar support through their supervisor.

Our Study Skills service provides online interactive resources, one-to-one tutorials and small-group workshops to complement your academic learning. Many degrees also offer Peer Assisted Study Sessions (PASS) in your first year, or subject-specific courses to develop your academic language and literacy.

Healthcare

Most international students can access medical care through the National Health Service (NHS). We offer a range of University-managed healthcare services including a full NHS doctor's practice.

Wellbeing and mental health support

Through our Wellbeing Access service you can access specialist support such as online peer-support resources; the Student Counselling Service; and Nilaari, offering culturally appropriate counselling for Black, Asian and Minority Ethnic students. Find out more at bristol.ac.uk/wellbeing.

We appreciate that students with enduring mental health difficulties may experience additional challenges in transitioning to university. If you have mental health difficulties, we recommend you notify us soon after accepting your offer to study at Bristol, so we can help you to set up your support network before you arrive. For information about the support available, visit bristol.ac.uk/disability-services.

Global Lounge

The Global Lounge is a cultural hub that encourages integration and community among all students through social events, cultural celebrations, and a regular Language Café. The physical Global Lounge, opening soon at the heart of campus, will be a place for international and UK students to connect, learn from each other and find out about global opportunities.

Disability Services

Our Disability Services team provides advice and study support for ongoing health conditions, mental health difficulties, specific learning difficulties, autism spectrum conditions, sensory impairments and mobility difficulties. If you have any of these, we strongly encourage you to make contact early so we can advise you of the support available and how to access it. Find out more at bristol.ac.uk/disability-services.

Faith and spirituality

The Multifaith Chaplaincy offers confidential pastoral and spiritual support, religious information and advice, regular events, and a welcoming space for students of all faiths and none. See bristol.ac.uk/chaplaincy.

Support if you have children

We offer a subsidised day nursery on the main campus, which can accommodate children from three months to five years old during weekdays throughout the year.



'I have been greatly supported by the personal tutor system within my school, and in my residence I was extremely touched by the personal and caring nature of those involved in pastoral care.'

Savannah South Africa (BA Liberal Arts)

Societies and sport

With more than 400 clubs and societies for all interests, everyone can belong at Bristol.

Led by students, for students

Every student at Bristol automatically becomes a member of the Students' Union, Bristol SU. The SU offers impartial, confidential advice; student representation; and endless opportunities to get involved. You can also relax on campus in our calming and sociable SU living rooms.

Pursue your passions

The SU is home to hundreds of student-run, interest-based societies, with everything from photography to baking and gardening to skydiving. These include more than 50 country-specific and religious societies – a great way to share your culture and feel a bit closer to home.

Student networks

Bristol SU networks are a way for students to build communities and create change. The International Students Network is for all international students to come together through socials, campaigns, forums and more. You can also join some of our 15 other networks such as the BME Network, LGBT+ Network and Multifaith Network.

Sport and exercise

Our wide range of activities and excellent facilities will help you lead a healthy, active lifestyle. Bristol SU offers more than 70 sports clubs, and you can also join our intramural leagues or inclusive exercise sessions. All skill levels are welcome, from beginner to competitor.

Our Performance Squad supports student athletes so you can combine your sporting career with your academic studies.



'I have joined a variety of societies, and I have also formed an Indian Society. I wanted to do something extra along with my course – this was a really good decision as it has helped me to settle into the UK, make new friends and learn about different cultures.'

Mehul India (BSc Economics and Finance)

Fees and scholarships

Studying for a degree is an investment in your future, and we understand that financing your studies requires important decisions.

Tuition fees

Tuition fees will depend on your course and your fee status. International tuition fees for the academic year 2021/22 are given on the next page. Fees are reviewed annually and are not fixed for the duration of your studies; you should budget for an annual increase of up to five per cent. This increase does not apply to undergraduate clinical courses in Medicine, Dentistry and Veterinary Science.

Scholarships

If you have the ability to succeed at Bristol, concerns about funding should not stop you from applying. Our Think Big programme offers a range of scholarships that can help fund your tuition fees. Find out more at bristol.ac.uk/international-scholarships.

Other financial support may be available to help fund your studies, including scholarships with our external partners. To find out about all the options and check your eligibility, use our online funding search tool at bristol.ac.uk/fees-funding/search.

Cost of living

Most students spend between £9,000 and £15,000 a year on living expenses, including accommodation, although this may vary depending on your lifestyle. For a breakdown of typical living costs, visit bristol.ac.uk/living-expenses.

Typical costs* of some groceries in Bristol:

1 litre milk	£0.93
1.5 litre bottled water	£1.06
1kg of onions	£1.05
1kg of bananas	£1.06
1kg of white rice	£1.07
1kg of potatoes	£1.20
12 eggs	£1.83
Cappuccino in a café	£2.85

*Numbeo, July 2020; cost of living based on consumer prices including rent

COURSE	ANNUAL TUITION FEE 2021/22	DEPOSIT
Foundation and pre-sessional		
International Foundation Programme	£21,100 to £22,000	£2,000
Pre-sessional English language courses	£2,850 to £5,950	£300
Undergraduate		
Arts-based subjects	£20,100 to £24,700	None
Science-based subjects	£24,700	None
BDS Dentistry	£38,000	None
MB ChB Medicine	£35,000	None
BVSc Veterinary Science	£32,000	None
Postgraduate		
Postgraduate programmes	Varies depending on degree; search for your programme online at bristol.ac.uk/postgraduate	£1,500

EU students

Students from Europe will be unable to access home fee status or financial support to study at universities in England from academic year 2021/22.

EU tuition fees for 2021/22 were not yet confirmed at the time of going to print. Please check our online course pages for the latest fee information.

Our scholars' reception welcomes scholarship winners to Bristol and celebrates their achievements.



Scholarships

Apply for a University of Bristol scholarship online at bristol.ac.uk/international-scholarships.

The cost of living in Bristol is around 25% less than London*

Entry requirements

We assess every application on individual merit and consider a wide range of qualifications.

International qualifications

If you studied at a school, college or university outside the UK, you can find detailed information about equivalent qualifications at bristol.ac.uk/international/countries.

If your qualifications don't quite meet the level required for direct entry onto one of our degrees, our International Foundation Programme or a pre-session course may provide you with the necessary preparation. Find out more at bristol.ac.uk/academic-language.

English language requirements

International applicants are required to have a good standard of English to study at Bristol, and different courses need different language levels. The language profile needed for each course is specified in our online course listings. Details of each profile, and the qualifications that can be used to meet the requirements, can be found at bristol.ac.uk/study/language-requirements.

You do not need to have reached the required English language level before applying. If you can't yet fulfil the specified profile, we will include this as part of your offer.

Education agents

Bristol has agreements with various education representatives, or agents, around the world. These are listed at bristol.ac.uk/international/countries. Representatives can help you to apply, but using one does not put you at an advantage or disadvantage when we consider your application.

Other requirements

Some courses require you to have studied specific subjects. This will be included in the online course profile.

For some courses, you must take an admissions test before we can offer you a place. If you are applying for an undergraduate medical or dental degree, you will need to take the UCAT University Clinical Aptitude Test (formerly UKCAT). If you are applying for a law LLB course, you will need to take the National Admissions Test for Law (LNAT). Some other courses may also require additional assessments, which will be listed on the online course profile.

Mature students

We welcome applications from mature students and will consider a range of vocational qualifications, occupational and life experiences, as well as more traditional qualifications. We sometimes invite mature students to an interview.

Visas

Our dedicated Student Visa Services team is available to help both before you arrive and throughout your studies.

Tier 4 visas

If you are not a British or Irish Citizen, you will most likely need to apply for a visa to come to the UK to study. We have a dedicated team of advisers who are here to assist you both before you arrive and throughout your studies, as well as comprehensive visa information web pages that will help you prepare for the process. Immigration rules are subject to ongoing review, and the latest guidance is available at bristol.ac.uk/visas.

Our service to you

Student Visa Services is available to support you from the moment you accept an offer of a place right through to graduation.

Our advisers offer immigration information and advice in a professional, friendly and confidential manner. This includes guidance on student visa routes and information about the attached conditions regarding working, studying (including visa implications following changes to your course such as transferring courses, extensions, suspension or withdrawal), engagement monitoring, registering with the police, and healthcare entitlements. Advisers can also help assist with visas for dependants as well as some post-study work visa options.



International qualifications

View entry requirements for your country at bristol.ac.uk/international/countries.

'Bristol's visa advice service is excellent and efficient. When I needed a visa renewal, the staff were incredibly helpful and kind. I was provided with simple and clear guidance and got my visa renewed worry-free.'

Aewis Malaysia (PhD Advanced Composites)

Applying

From exploring the University to receiving an offer, your student journey is about to begin.



How to apply

Select your study level below and follow our online instructions to apply to Bristol.

Pre-sessional:

bristol.ac.uk/ps-apply

International Foundation Programme:

bristol.ac.uk/ifp-apply

Undergraduate:

bristol.ac.uk/international-ug-apply

Postgraduate:

bristol.ac.uk/international-pg-apply

Deadlines

Some courses have application deadlines, which you will need to meet in order to be considered for 2021 entry. Use our online course finders to check the deadline for your subject.

If you are applying for a scholarship or funding, these will have their own application deadlines. You often need to have applied for your chosen course before you can submit a funding application. Find out more at bristol.ac.uk/international-scholarships.

Research degrees

If you are a postgraduate research applicant, you may want, or be requested, to propose your own area of study. The school website and admissions statement will give details on what your research proposal should contain. You can search for a potential supervisor using our website. We recommend emailing the relevant school or faculty office to discuss your research proposal with your chosen supervisor before applying.

Offer types

A conditional offer means your place is dependent on achieving specified grades, and/or meeting our English language requirements. An unconditional offer means you have already met all the academic requirements for your chosen course.

Selection

Our admissions statements, available for all courses, outline how applications are assessed and the criteria used to assess them. Statements for 2021 entry will be finalised by August 2020 for undergraduate courses, and in September 2020 for postgraduate programmes.

bristol.ac.uk/ug-policies

bristol.ac.uk/pg-policies



1

Research

Visit our online course pages to find your perfect degree. You can also see unit details, entry requirements and application deadlines.

bristol.ac.uk/study

2

Apply

Follow the online instructions to submit your application and any supporting documents.

3

Decide

Explore our website and social media accounts to get a deeper insight into studying at Bristol. You might also be invited to a virtual visit.

4

Get ready

Once you have accepted an offer, we will be in touch to help you prepare to arrive in Bristol.

bristol.ac.uk/study

Courses and programmes

We offer 600+ courses and programmes across a range of levels.

Undergraduate courses

Bristol offers a wide choice of undergraduate courses, leading to a bachelor's degree (eg BA, BSc, LLB), including single honours and joint honours.

Most undergraduate courses are three years long, though some include an additional year abroad or in industry. In many science, engineering and health science courses you can choose a four-year integrated master's degree (eg MEng, MSci). Dentistry, medicine and veterinary science degrees usually take five years.

Postgraduate taught programmes

These programmes, leading to a master's degree (eg MA, MSc, MRes, LLM), combine taught units with a research project, and are usually studied over one year full-time.

We also offer Postgraduate Diplomas (PGDip) and Postgraduate Certificates (PGCert) in some subjects.

Postgraduate research programmes

On a postgraduate research degree, also known as a doctoral programme, you will conduct original research under the close supervision of academic experts.

- A Doctor of Philosophy (PhD) is the most common research degree, normally representing three to four years of full-time study.
- Our one-year or two-year master's by research degrees (eg MScR, MPhil, MMus) include a structured research project.
- Professional doctorates (eg EdD, EngD, DEdPsych, MD) are typically suited to specialist practitioners already qualified to an advanced level who wish to deepen their knowledge.

Pre-sessional and foundation courses

Our International Foundation Programmes are the ideal preparation if you need to improve your academic knowledge, language and skills before starting university. You can also improve your academic language and literacy to prepare for your degree with our pre-sessional courses. See bristol.ac.uk/academic-language.

Intercalated courses

Current medical, dental and veterinary students can apply to intercalate at Bristol. An intercalated award is an additional undergraduate degree (BSc or BA) or a master's-level programme that you complete in an intensive year away from your normal studies. For full details, see bristol.ac.uk/intercalate.

Pre-sessional and foundation courses

	Course length
ACADEMIC ENGLISH PRE-SESSIONAL COURSES	
For postgraduate offer holders: May start	14 weeks
For undergraduate and postgraduate offer holders: June start	10 weeks
For undergraduate and postgraduate offer holders: July start	6 weeks
INTERNATIONAL FOUNDATION PROGRAMME	
Arts and Humanities pathway	1 year
Medicine and Dentistry pathway	1 year
Science, Technology, Engineering and Mathematics pathway	1 year
Social Sciences and Law pathway	1 year

Intercalated courses

	Award
ONE-YEAR STANDALONE COURSE	
Bioethics	BSc
Child Health Research	BSc
Clinical Sciences	BSc
Epidemiology	MSc
Functional and Clinical Anatomy	BSc
Genomic Medicine	BSc
Global Health	BSc
Global Wildlife Health and Conservation	MSc
Health, Law and Society	LLM
Health Sciences Research	MRes
Health Sciences Research (Renal)	MRes
Health Sciences Research (Translational Cardiovascular Medicine)	MRes
Medical Humanities	BA
Public Health	MSc
Translational Cardiovascular Medicine	MSc
ONE-YEAR ENTRY ONTO THREE-YEAR COURSE	
Biochemistry with Medical Biochemistry	BSc
Cancer Biology and Immunology	BSc
Cellular and Molecular Medicine	BSc
Childhood Studies	BSc
Medical Microbiology	BSc
Neuroscience	BSc
Pharmacology	BSc
Physiological Science	BSc
Social Policy	BSc
Virology and Immunology	BSc
Zoology	BSc



Search our online course finder at bristol.ac.uk/study

Undergraduate courses

Course	UCAS code	Course length	Typical offer A-level	IB
ACCOUNTING				
BSc Accounting and Finance	NN43	3 years	AAA	36
BSc Accounting and Finance with SA	NN46	4 years	AAA	36
BSc Accounting and Finance with Professional Placement	†	4 years	AAA	36
BSc Accounting and Management	NN42	3 years	AAA	36
BSc Accounting and Management with SA	NN45	4 years	AAA	36
BSc Accounting and Management with Professional Placement	†	4 years	AAA	36
BSc Economics and Accounting	LN14	3 years	AAA	36
BSc Economics and Accounting with Professional Placement	†	4 years	AAA	36
BSc Economics and Accounting with SA	LN16	4 years	AAA	36
BSc Finance	N300	3 years	AAA	36
AEROSPACE ENGINEERING				
BEng Aerospace Engineering	H405	3 years	A*AA	38
MEng Aerospace Engineering	H410	4 years	A*AA	38
MEng Aerospace Engineering with a Year in Industry	†	5 years	A*AA	38
MEng Aerospace Engineering with SA	†	4 years	A*AA	38
MEng Aerospace Engineering with SA in a Modern Language	H401	4 years	A*AA	38
ANCIENT HISTORY				
BA Ancient History	V110	3 years	AAB	34
ANTHROPOLOGY AND ARCHAEOLOGY				
BA Anthropology	XD49	3 years	AAB	34
BA Archaeology and Anthropology	VL46	3 years	AAB	34
MArts Anthropology and Innovation	XD50	4 years	AAB	34
APPLIED ANATOMY				
BSc Applied Anatomy	B112	3 years	ABB	32
BIOCHEMISTRY				
BSc Biochemistry	C700	3 years	AAA	36
BSc Biochemistry with Medical Biochemistry	C720	3 years	AAA	36
BSc Biochemistry with Molecular Biology and Biotechnology	C790	3 years	AAA	36
BSc Biochemistry with Study in Industry	†	4 years	AAA	36
MSci Biochemistry	C701	4 years	AAA	36
MSci Biochemistry with Medical Biochemistry	C721	4 years	AAA	36
MSci Biochemistry with Molecular Biology and Biotechnology	C791	4 years	AAA	36

Course	UCAS code	Course length	Typical offer A-level	IB
BIOLOGICAL SCIENCES				
BSc Biology	C100	3 years	AAB	34
BSc Plant Sciences	C201	3 years	AAB	34
BSc Zoology	C300	3 years	AAB	34
MSci Biology	C103	4 years	AAA	36
MSci Plant Sciences	C203	4 years	AAA	36
MSci Zoology	C303	4 years	AAA	36
BIOMEDICAL SCIENCES				
BSc Biomedical Sciences	B900	3 years	AAA	36
CELLULAR AND MOLECULAR MEDICINE				
BSc Cancer Biology and Immunology	B131	3 years	AAB	34
BSc Cancer Biology and Immunology with Study in Industry	†	4 years	AAB	34
BSc Cellular and Molecular Medicine	B130	3 years	AAB	34
BSc Cellular and Molecular Medicine with Study in Industry	†	4 years	AAB	34
BSc Medical Microbiology	C521	3 years	AAB	34
BSc Medical Microbiology with Study in Industry	†	4 years	AAB	34
BSc Virology and Immunology	C540	3 years	AAB	34
BSc Virology and Immunology with Study in Industry	†	4 years	AAB	34
MSci Cancer Biology and Immunology	B132	4 years	AAA	36
MSci Cellular and Molecular Medicine	B133	4 years	AAA	36
MSci Medical Microbiology	C522	4 years	AAA	36
MSci Virology and Immunology	C541	4 years	AAA	36
CHEMICAL PHYSICS				
BSc Chemical Physics	F320	3 years	AAA	36
MSci Chemical Physics	F322	4 years	A*AA	38
MSci Chemical Physics with Industrial Experience	F323	4 years	A*AA	38
CHEMISTRY				
BSc Chemistry	F100	3 years	AAA	36
MSci Chemistry	F103	4 years	A*AA	38
MSci Chemistry with Industrial Experience	F105	4 years	A*AA	38
MSci Chemistry with SA	F107	4 years	A*AA	38
MSci Chemistry with SA in a Modern Language	F104	4 years	A*AA	38
CHEMISTRY WITH SCIENTIFIC COMPUTING				
BSc Chemistry with Scientific Computing	F130	3 years	AAA	36
MSci Chemistry with Scientific Computing	F131	4 years	A*AA	38
CHILDHOOD STUDIES				
BSc Childhood Studies	L520	3 years	ABB	32
BSc Childhood Studies with SA	L525	4 years	ABB	32
BSc Childhood Studies with QRM	L522	3 years	ABB	32
MSci Childhood Studies with Innovation	L526	4 years	ABB	32
MSci Childhood Studies with QRM	L523	4 years	ABB	32

Course	UCAS code	Course length	Typical offer A-level	IB
CIVIL ENGINEERING				
BEng Civil Engineering	H205	3 years	A*AA	38
MEng Civil Engineering	H200	4 years	A*AA	38
MEng Civil Engineering with a Year in Industry	†	5 years	A*AA	38
MEng Civil Engineering with SA	†	4 years	A*AA	38
MEng Civil Engineering SA in a Modern Language	H201	4 years	A*AA	38
CLASSICAL STUDIES				
BA Classical Studies	Q810	3 years	AAB	34
BA English and Classical Studies	QQ38	3 years	AAA	36
CLASSICS				
BA Classics	Q800	3 years	AAA	36
COMPARATIVE LITERATURES AND CULTURES				
BA Comparative Literatures and Cultures	Q200	4 years	AAB	34
BA Comparative Literatures and Cultures with French	QR38	4 years	AAB	34
BA Comparative Literatures and Cultures with German	QR40	4 years	AAB	34
BA Comparative Literatures and Cultures with Italian	QR41	4 years	AAB	34
BA Comparative Literatures and Cultures with Portuguese	QR42	4 years	AAB	34
BA Comparative Literatures and Cultures with Russian	QR43	4 years	AAB	34
BA Comparative Literatures and Cultures with Spanish	QR39	4 years	AAB	34
COMPUTER SCIENCE				
BEng Computer Science and Electronics	GH45	3 years	AAA	36
BSc Computer Science	G400	3 years	A*AA	38
BSc Mathematics and Computer Science	GG14	3 years	A*A*A	40
MEng Computer Science	G403	4 years	A*AA	38
MEng Computer Science and Electronics	GH46	4 years	AAA	36
MEng Computer Science and Electronics with SA	GH4P	4 years	AAA	36
MEng Computer Science with SA	†	4 years	A*AA	38
MEng Computer Science with SA in a Modern Language	G401	4 years	A*AA	38
MEng Computer Science with Innovation	G404	4 years	A*AA	38
MEng Mathematics and Computer Science	GG1K	4 years	A*A*A	40
CRIMINOLOGY				
BSc Criminology	M900	3 years	ABB	32
BSc Criminology with QRM	M902	3 years	ABB	32
BSc Criminology with SA	M901	4 years	ABB	32
BSc Social Policy with Criminology	LM49	3 years	ABB	32
MSci Criminology with QRM	M903	4 years	ABB	32

Course	UCAS code	Course length	Typical offer A-level	IB
DENTISTRY				
BDS Dentistry	A206	5 years	AAA	36
ECONOMICS				
BSc Economics	L100	3 years	A*AA	38
BSc Economics and Accounting	LN14	3 years	AAA	36
BSc Economics and Accounting with Professional Placement	†	4 years	AAA	36
BSc Economics and Accounting with SA	LN16	4 years	AAA	36
BSc Economics and Econometrics	L140	3 years	A*AA	38
BSc Economics and Econometrics with SA	L142	4 years	A*AA	38
BSc Economics and Finance	LN13	3 years	AAA	36
BSc Economics and Finance with SA	LN15	4 years	AAA	36
BSc Economics and Management	LN12	3 years	AAA	36
BSc Economics and Management with SA	LN17	4 years	AAA	36
BSc Economics and Mathematics	LG11	3 years	A*AA	38
BSc Economics and Politics	LL12	3 years	AAA	36
BSc Economics and Politics with SA	LL14	4 years	AAA	36
BSc Economics with SA	L105	4 years	A*AA	38
BSc Economics with SA in a Modern Language	L101	4 years	A*AA	38
BSc Philosophy and Economics	VL51	3 years	AAA	36
BSc Philosophy and Economics with SA	VL54	4 years	AAA	36
MSci Economics with Innovation	L104	4 years	A*AA	38
EDUCATION				
BSc Education Studies	X300	3 years	ABB	32
BSc Education Studies with SA	X304	4 years	ABB	32
BSc Psychology in Education	X301	3 years	ABB	32
BSc Psychology in Education with SA	X305	4 years	ABB	32
ELECTRICAL AND ELECTRONIC ENGINEERING				
BEng Computer Science and Electronics	GH45	3 years	AAA	36
BEng Electrical and Electronic Engineering	H600	3 years	AAA	36
BEng Mechanical and Electrical Engineering	H361	3 years	AAA	36
MEng Computer Science and Electronics	GH46	4 years	AAA	36
MEng Computer Science and Electronics with SA	GH4P	4 years	AAA	36
MEng Electrical and Electronic Engineering	H606	4 years	AAA	36
MEng Electrical and Electronic Engineering with a Year in Industry	†	5 years	AAA	36
MEng Electrical and Electronic Engineering with Innovation	H604	4 years	AAA	36
MEng Electrical and Electronic Engineering with SA	†	4 years	AAA	36

Course	UCAS code	Course length	Typical offer A-level	IB
MEng Electrical and Electronic Engineering with SA in a Modern Language	H605	4 years	AAA	36
MEng Mechanical and Electrical Engineering	H360	4 years	AAA	36
MEng Mechanical and Electrical Engineering with a Year in Industry	†	5 years	AAA	36
ENGINEERING DESIGN				
MEng Engineering Design with Study in Industry	H150	5 years	A*AA	38
ENGINEERING MATHEMATICS				
BEng Engineering Mathematics	G162	3 years	AAA	36
MEng Engineering Mathematics	G161	4 years	AAA	36
MEng Engineering Mathematics with a Year in Industry	†	5 years	AAA	36
MEng Engineering Mathematics with SA	G160	4 years	AAA	36
ENGLISH				
BA English	Q300	3 years	AAA	36
BA English and Classical Studies	QQ38	3 years	AAA	36
BA English and French	QR31	4 years	AAA	36
BA English and German	QR32	4 years	AAA	36
BA English and History	QV31	3 years	AAA	36
BA English and Italian	QR33	4 years	AAA	36
BA English and Philosophy	QV35	3 years	AAA	36
BA English and Portuguese	QR35	4 years	AAA	36
BA English and Russian	QR37	4 years	AAA	36
BA English and Spanish	QR34	4 years	AAA	36
BA Film and English	6T3X	3 years	AAA	36
BA Theatre and English	4CC8	3 years	AAA	36
ENVIRONMENTAL GEOSCIENCE				
BSc Environmental Geoscience	F640	3 years	AAB	34
MSci Environmental Geoscience	F641	4 years	AAB	34
MSci Environmental Geoscience with SA	F644	4 years	AAB	34
FILM AND TELEVISION				
BA Film and English	6T3X	3 years	AAA	36
BA Film and French	2LK6	4 years	AAB	34
BA Film and German	4F29	4 years	AAB	34
BA Film and Italian	4L92	4 years	AAB	34
BA Film and Portuguese	4PP8	4 years	AAB	34
BA Film and Spanish	L288	4 years	AAB	34
BA Film and Television	4M5N	3 years	AAB	34
BA Theatre and Film	4KDU	3 years	AAB	34
MArts Film and Television with Innovation	4M50	4 years	AAB	34
FRENCH				
BA Comparative Literatures and Cultures with French	QR38	4 years	AAB	34
BA English and French	QR31	4 years	AAA	36
BA Film and French	2LK6	4 years	AAB	34
BA French	R100	4 years	AAB	34
BA French and German	RR12	4 years	AAB	34
BA French and Italian	RR13	4 years	AAB	34
BA French and Portuguese	RR15	4 years	AAB	34
BA French and Russian	RR17	4 years	AAB	34

Course	UCAS code	Course length	Typical offer A-level	IB
BA French and Spanish	RR14	4 years	AAB	34
BA History and French	VR11	4 years	AAA	36
BA History of Art and French	VR31	4 years	AAB	34
BA International Business Management and French	NR11	4 years	AAA	36
BA Music and French	WR31	4 years	AAB	34
BA Philosophy and French	RV15	4 years	AAB	34
BA Politics and French	RL12	4 years	AAB	34
BA Theatre and French	W43F	4 years	AAB	34
LLB Law and French	MR11	4 years	A*AA	38
GEOGRAPHY				
BSc Geography	F800	3 years	AAA	36
BSc Geography with QRM	F802	3 years	AAA	36
BSc Geography with SA	09F4	4 years	AAA	36
BSc Geography with SA in a Modern Language	F801	4 years	AAA	36
MSci Geography with Innovation	F805	4 years	AAA	36
MSci Geography with QRM	F804	4 years	AAA	36
GEOLOGY				
BSc Geology	F600	3 years	AAB	34
MSci Geology	F603	4 years	AAB	34
MSci Geology with SA	F609	4 years	AAB	34
GEOPHYSICS				
BSc Geophysics	F661	3 years	AAB	34
MSci Geophysics	F662	4 years	AAB	34
MSci Geophysics with SA	F663	4 years	AAB	34
GERMAN				
BA Comparative Literatures and Cultures with German	QR40	4 years	AAB	34
BA English and German	QR32	4 years	AAA	36
BA Film and German	4F29	4 years	AAB	34
BA French and German	RR12	4 years	AAB	34
BA German	R200	4 years	AAB	34
BA German and Italian	RR23	4 years	AAB	34
BA German and Portuguese	RR25	4 years	AAB	34
BA German and Russian	RR27	4 years	AAB	34
BA German and Spanish	RR24	4 years	AAB	34
BA History and German	VR12	4 years	AAA	36
BA History of Art and German	VR32	4 years	AAB	34
BA International Business Management and German	NR12	4 years	AAA	36
BA Music and German	WR32	4 years	AAB	34
BA Philosophy and German	RV25	4 years	AAB	34
BA Politics and German	RL22	4 years	AAB	34
BA Theatre and German	21C7	4 years	AAB	34
LLB Law and German	MR12	4 years	A*AA	38
HISTORY				
BA Ancient History	V110	3 years	AAB	34
BA English and History	QV31	3 years	AAA	36
BA History	V100	3 years	AAA	36
BA History and French	VR11	4 years	AAA	36
BA History and German	VR12	4 years	AAA	36
BA History and Italian	VR13	4 years	AAA	36
BA History and Portuguese	VR15	4 years	AAA	36
BA History and Russian	VR17	4 years	AAA	36
BA History and Spanish	VR14	4 years	AAA	36
MArts History with Innovation	V104	4 years	AAA	36

Course	UCAS code	Course length	Typical offer A-level	IB
HISTORY OF ART				
BA History of Art	V350	3 years	AAB	34
BA History of Art and French	VR31	4 years	AAB	34
BA History of Art and German	VR32	4 years	AAB	34
BA History of Art and Italian	VR33	4 years	AAB	34
BA History of Art and Portuguese	VR35	4 years	AAB	34
BA History of Art and Russian	VR37	4 years	AAB	34
BA History of Art and Spanish	VR34	4 years	AAB	34
INNOVATION				
MArts Anthropology with Innovation	XD50	4 years	AAB	34
MArts Film and Television with Innovation	4M50	4 years	AAB	34
MArts History with Innovation	V104	4 years	AAA	36
MArts Music with Innovation	W304	4 years	AAB	34
MArts Theatre with Innovation	2Q50	4 years	AAB	34
MEng Computer Science with Innovation	G404	4 years	A*AA	38
MEng Electrical and Electronic Engineering with Innovation	H604	4 years	AAA	36
MSci Childhood Studies with Innovation	L526	4 years	ABB	32
MSci Economics with Innovation	L104	4 years	A*AA	38
MSci Geography with Innovation	F805	4 years	AAA	36
MSci Management with Innovation	N204	4 years	AAA	36
MSci Physics with Innovation	F306	4 years	A*AA	38
MSci Psychology with Innovation	C804	4 years	A*AA	38
MSci Social Policy with Innovation	L405	4 years	ABB	32
INTERNATIONAL BUSINESS MANAGEMENT				
BA International Business Management and French	NR11	4 years	AAA	36
BA International Business Management and German	NR12	4 years	AAA	36
BA International Business Management and Spanish	NR14	4 years	AAA	36
BSc International Business Management	N120	3 years	AAA	36
BSc International Business Management with SA	N121	4 years	AAA	36
BSc International Business Management with SA in a Modern Language[†]	N122	4 years	AAA	36
ITALIAN				
BA Comparative Literatures and cultures with Italian	QR41	4 years	AAB	34
BA English and Italian	QR33	4 years	AAA	36
BA Film and Italian	4L92	4 years	AAB	34
BA French and Italian	RR13	4 years	AAB	34

Course	UCAS code	Course length	Typical offer A-level	IB
BA German and Italian	RR23	4 years	AAB	34
BA History and Italian	VR13	4 years	AAA	36
BA History of Art and Italian	VR33	4 years	AAB	34
BA Italian	R310	4 years	AAB	34
BA Italian and Portuguese	RR35	4 years	AAB	34
BA Italian and Russian	RR37	4 years	AAB	34
BA Italian and Spanish	RR34	4 years	AAB	34
BA Music and Italian	WR33	4 years	AAB	31
BA Philosophy and Italian	RV35	4 years	AAB	34
BA Politics and Italian	RL32	4 years	AAB	34
BA Theatre and Italian	22FF	4 years	AAB	34
LAW				
LLB Law	M100	3 years	A*AA	38
LLB Law and French	MR11	4 years	A*AA	38
LLB Law and German	MR12	4 years	A*AA	38
LLB Law and Spanish	MR13	4 years	A*AA	38
LLB Law with SA	†	4 years	A*AA	38
LLB Law with Study in Continental Europe	†	4 years	A*AA	38
LIBERAL ARTS				
BA Liberal Arts	2ZB7	3 years	AAA	36
MLibArts Liberal Arts with SA	2T23	4 years	AAA	36
MANAGEMENT				
BSc Accounting and Management	NN42	3 years	AAA	36
BSc Accounting and Management with Professional Placement	†	4 years	AAA	36
BSc Accounting and Management with SA	NN45	4 years	AAA	36
BSc Economics and Management	LN12	3 years	AAA	36
BSc Economics and Management with SA	LN17	4 years	AAA	36
BSc Management	N200	3 years	AAA	36
BSc Management with SA	N201	4 years	AAA	36
BSc Management with SA in a Modern Language	4H56	4 years	AAA	36
MSci Management with Innovation	N204	4 years	AAA	36
MARKETING				
BSc Marketing	N500	3 years	AAA	36
BSc Marketing with SA	N504	4 years	AAA	36
BSc Marketing with SA in a Modern Language	N501	4 years	AAA	36
MATHEMATICS				
BSc Data Science	G1G5	3 years	A*AA	38
BSc Data Science with a Year in Industry	G1G6	4 years	A*AA	38
BSc Economics and Mathematics	LG11	3 years	A*AA	38
BSc Mathematics	G100	3 years	A*A*A	40
BSc Mathematics and Computer Science	GG14	3 years	A*A*A	40
BSc Mathematics and Philosophy	VG51	3 years	A*AA	38
BSc Mathematics and Physics	GFD3	3 years	A*AA	38

Course	UCAS code	Course length	Typical offer A-level	IB
BSc Mathematics with Statistics	G1G3	3 years	A*A*A	40
BSc Mathematics with Statistics for Finance	G1G4	3 years	A*A*A	40
BSc Mathematics with SA in a Modern Language	G101	4 years	A*A*A	40
MEng Mathematics and Computer Science	GG1K	4 years	A*A*A	40
MSci Mathematics	G103	4 years	A*A*A	40
MSci Mathematics and Philosophy	GV15	4 years	A*AA	38
MSci Mathematics and Physics	GFC3	4 years	A*AA	38
MSci Mathematics with Statistics	G1GH	4 years	A*A*A	40
MSci Mathematics with SA	G105	4 years	A*A*A	40
MSci Mathematics with SA in a Modern Language	G104	4 years	A*A*A	40
MECHANICAL ENGINEERING				
BEng Mechanical Engineering	H305	3 years	A*AA	38
BEng Mechanical and Electrical Engineering	H361	3 years	AAA	36
MEng Mechanical Engineering	H300	4 years	A*AA	38
MEng Mechanical Engineering with a Year in Industry	†	5 years	A*AA	38
MEng Mechanical Engineering with SA	†	4 years	A*AA	38
MEng Mechanical Engineering with SA in a Modern Language	H301	4 years	A*AA	38
MEng Mechanical and Electrical Engineering	H360	4 years	AAA	36
MEng Mechanical and Electrical Engineering with a Year in Industry	†	5 years	AAA	36
MEDICINE				
MB ChB Medicine	A100	5 years	AAA	36
MODERN LANGUAGES				
BA Modern Languages	RR01	4 years	AAA	36
See also: French, German, Italian, Portuguese, Russian and Spanish				
MUSIC				
BA Music	W300	3 years	AAB	34
BA Music and French	WR31	4 years	AAB	34
BA Music and German	WR32	4 years	AAB	34
BA Music and Italian	WR33	4 years	AAB	31
BA Music and Portuguese	WR35	4 years	AAB	34
BA Music and Russian	WR37	4 years	AAB	34
BA Music and Spanish	WR34	4 years	AAB	34
MArts Music with Innovation	W304	4 years	AAB	34
NEUROSCIENCE				
BSc Neuroscience	B140	3 years	AAA	36
MSci Neuroscience	B141	4 years	AAA	36
MSci Neuroscience with Study in Industry	†	4 years	AAA	36
MSci Psychology and Neuroscience	CB81	4 years	A*AA	38

Course	UCAS code	Course length	Typical offer A-level	IB
PALAEONTOLOGY AND EVOLUTION				
BSc Palaeontology and Evolution	CF17	3 years	AAB	34
MSci Palaeontology and Evolution	CF16	4 years	AAB	34
PHARMACOLOGY				
BSc Pharmacology	B210	3 years	AAB	34
MSci Pharmacology	B212	4 years	AAB	34
MSci Pharmacology with Study in Industry	B211	4 years	AAB	34
PHILOSOPHY				
BA English and Philosophy	QV35	3 years	AAA	36
BA Philosophy	V500	3 years	AAA	36
BA Philosophy and French	RV15	4 years	AAB	34
BA Philosophy and German	RV25	4 years	AAB	34
BA Philosophy and Italian	RV35	4 years	AAB	34
BA Philosophy and Portuguese	RV55	4 years	AAB	34
BA Philosophy and Russian	RV75	4 years	AAB	34
BA Philosophy and Spanish	RV45	4 years	AAB	34
BA Philosophy and Theology	VW56	3 years	AAA	36
BSc Philosophy and Economics	VL51	3 years	AAA	362
BSc Philosophy and Economics with SA	VL54	4 years	AAA	36
BSc Mathematics and Philosophy	VG51	3 years	A*AA	38
BSc Philosophy and Politics	VL52	3 years	AAA	36
BSc Physics and Philosophy	FV35	3 years	A*AA	38
BSc Sociology and Philosophy	LV35	3 years	AAB	34
MSci Mathematics and Philosophy	GV15	4 years	A*AA	38
MSci Physics and Philosophy	FVH5	4 years	A*AA	38
PHYSICS				
BSc Mathematics and Physics	GFD3	3 years	A*AA	38
BSc Physics	F300	3 years	A*AA	38
BSc Physics and Philosophy	FV35	3 years	A*AA	38
BSc Physics with Astrophysics	F3F5	3 years	A*AA	38
MSci Mathematics and Physics	GFC3	4 years	A*AA	38
MSci Physics	F303	4 years	A*AA	38
MSci Physics and Philosophy	FVH5	4 years	A*AA	38
MSci Physics with Astrophysics	F3FM	4 years	A*AA	38
MSci Physics with Industrial Experience	F305	4 years	A*AA	38
MSci Physics with Innovation	F306	4 years	A*AA	38
MSci Physics with International Experience	F307	4 years	A*AA	38
MSci Physics with SA in a Modern Language	F304	4 years	A*AA	38
MSci Theoretical Physics	F340	4 years	A*AA	38

Course	UCAS code	Course length	Typical offer A-level	IB
PHYSICS WITH SCIENTIFIC COMPUTING				
BSc Physics with Scientific Computing	F330	3 years	A*AA	38
MSci Physics with Scientific Computing	F331	4 years	A*AA	38
MSci Physics with Scientific Computing with Industrial Experience	F334	4 years	A*AA	38
PHYSIOLOGICAL SCIENCE				
BSc Physiological Science	B120	3 years	AAB	34
MSci Physiological Science	B122	4 years	AAB	34
MSci Physiological Science with Study in Industry	†	4 years	AAB	34
POLITICS AND INTERNATIONAL RELATIONS				
BA Politics and French	RL12	4 years	AAB	34
BA Politics and German	RL22	4 years	AAB	34
BA Politics and Italian	RL32	4 years	AAB	34
BA Politics and Portuguese	RL52	4 years	AAB	34
BA Politics and Russian	RL72	4 years	AAB	34
BA Politics and Spanish	RL42	4 years	AAB	34
BSc Economics and Politics	LL12	3 years	AAA	36
BSc Economics and Politics with SA	LL14	4 years	AAA	36
BSc Philosophy and Politics	VL52	3 years	AAA	36
BSc Politics and International Relations	L200	3 years	AAA	36
BSc Politics and International Relations with SA	L201	4 years	AAA	36
BSc Politics and Sociology	LL23	3 years	AAB	34
BSc Politics with QRM	L202	3 years	AAA	36
BSc Politics with QRM with SA	L204	4 years	AAA	36
BSc Social Policy and Politics	LL42	3 years	AAB	34
MSci Politics with QRM	L203	4 years	AAA	36
PORTUGUESE				
BA Comparative Literatures and Cultures with Portuguese	QR42	4 years	AAB	34
BA English and Portuguese	QR35	4 years	AAA	36
BA Film and Portuguese	4PP8	4 years	AAB	34
BA French and Portuguese	RR15	4 years	AAB	34
BA German and Portuguese	RR25	4 years	AAB	34
BA Hispanic Studies	RR45	4 years	AAB	34
BA History and Portuguese	VR15	4 years	AAA	36
BA History of Art and Portuguese	VR35	4 years	AAB	34
BA Italian and Portuguese	RR35	4 years	AAB	34
BA Music and Portuguese	WR35	4 years	AAB	34
BA Philosophy and Portuguese	RV55	4 years	AAB	34
BA Politics and Portuguese	RL52	4 years	AAB	34
BA Russian and Portuguese	RR67	4 years	AAB	34
BA Spanish and Portuguese	RR54	4 years	AAB	34
BA Theatre and Portuguese	R2D8	4 years	AAB	34
PSYCHOLOGY				
BSc Psychology	C801	3 years	A*AA	38
MSci Psychology with Innovation	C804	4 years	A*AA	38
MSci Psychology and Neuroscience	CB81	4 years	A*AA	38

Course	UCAS code	Course length	Typical offer A-level	IB
QUANTITATIVE RESEARCH METHODS				
BSc Childhood Studies with QRM	L522	3 years	ABB	32
BSc Criminology with QRM	M902	3 years	ABB	32
BSc Geography with QRM	F802	3 years	AAA	36
BSc Politics with QRM	L202	3 years	AAA	36
BSc Politics with QRM with SA	L204	4 years	AAA	36
BSc Social Policy with QRM	L402	3 years	ABB	32
BSc Sociology with QRM	L302	3 years	AAB	34
BSc Sociology with QRM with SA	L304	4 years	AAB	34
MSci Childhood Studies with QRM	L523	4 years	ABB	32
MSci Criminology with QRM	M903	4 years	ABB	32
MSci Geography with QRM	F804	4 years	AAA	36
MSci Politics with QRM	L203	4 years	AAA	36
MSci Social Policy with QRM	L403	4 years	ABB	32
MSci Sociology with QRM	L303	4 years	AAB	34
RELIGION AND THEOLOGY				
BA Philosophy and Theology	VW56	3 years	AAA	36
BA Religion and Theology	V600	3 years	AAB	34
BA Theology and Sociology	VL63	3 years	AAB	34
MArts Religion and Theology with SA	V601	4 years	AAB	34
RUSSIAN				
BA Comparative Literatures and Cultures with Russian	QR43	4 years	AAB	34
BA English and Russian	QR37	4 years	AAA	36
BA French and Russian	RR17	4 years	AAB	34
BA German and Russian	RR27	4 years	AAB	34
BA History and Russian	VR17	4 years	AAA	36
BA History of Art and Russian	VR37	4 years	AAB	34
BA Italian and Russian	RR37	4 years	AAB	34
BA Music and Russian	WR37	4 years	AAB	34
BA Philosophy and Russian	RV75	4 years	AAB	34
BA Politics and Russian	RL72	4 years	AAB	34
BA Russian	R700	4 years	AAB	34
BA Russian and Portuguese	RR57	4 years	AAB	34
BA Spanish and Russian	RR47	4 years	AAB	34
SOCIAL POLICY				
BSc International Social and Public Policy	L410	3 years	ABB	32
BSc International Social and Public Policy with SA	L411	4 years	ABB	32
BSc Social Policy	L400	3 years	ABB	32
BSc Social Policy and Politics	LL42	3 years	AAB	34
BSc Social Policy and Sociology	LL43	3 years	ABB	32
BSc Social Policy with Criminology	LM49	3 years	ABB	32
BSc Social Policy with QRM	L402	3 years	ABB	32
BSc Social Policy with SA	L404	4 years	ABB	32
MSci Social Policy with Innovation	L405	4 years	ABB	32
MSci Social Policy with QRM	L403	4 years	ABB	32

Course	UCAS code	Course length	Typical offer A-level	IB
SOCIOLOGY				
BA Theology and Sociology	VL63	3 years	AAB	34
BSc Politics and Sociology	LL23	3 years	AAB	34
BSc Sociology	L300	3 years	AAB	34
BSc Sociology and Philosophy	LV35	3 years	AAB	34
BSc Social Policy and Sociology	LL43	3 years	ABB	32
BSc Sociology with QRM	L302	3 years	AAB	34
BSc Sociology with QRM with SA	L304	4 years	AAB	34
BSc Sociology with SA	L301	4 years	AAB	34
MSci Sociology with QRM	L303	4 years	AAB	34
SPANISH				
BA Comparative Literatures and Cultures with Spanish	QR39	4 years	AAB	34
BA English and Spanish	QR34	4 years	AAA	36
BA Film and Spanish	L288	4 years	AAB	34
BA French and Spanish	RR14	4 years	AAB	34
BA German and Spanish	RR24	4 years	AAB	34
BA Hispanic Studies	RR45	4 years	AAB	34
BA History and Spanish	VR14	4 years	AAA	36
BA History of Art and Spanish	VR34	4 years	AAB	34
BA International Business Management and Spanish	NR14	4 years	AAA	36
BA Italian and Spanish	RR34	4 years	AAB	34
BA Music and Spanish	WR34	4 years	AAB	34
BA Politics and Spanish	RL42	4 years	AAB	34
BA Philosophy and Spanish	RV45	4 years	AAB	34
BA Spanish	R400	4 years	AAB	34
BA Spanish and Portuguese	RR54	4 years	AAB	34
BA Spanish and Russian	RR47	4 years	AAB	34
BA Theatre and Spanish	4D8C	4 years	AAB	34
LLB Law and Spanish	MR13	4 years	A*AA	38
THEATRE				
BA Theatre and English	4CC8	3 years	AAA	36
BA Theatre and Film	4KDU	3 years	AAB	34
BA Theatre and French	W43F	4 years	AAB	34
BA Theatre and German	21C7	4 years	AAB	34
BA Theatre and Italian	22FF	4 years	AAB	34
BA Theatre and Performance Studies	2Q3W	3 years	AAB	34
BA Theatre and Portuguese	R2D8	4 years	AAB	34
BA Theatre and Spanish	4D8C	4 years	AAB	34
MArts Theatre with Innovation	2Q50	4 years	AAB	34
VETERINARY NURSING				
BSc Veterinary Nursing and Bioveterinary Science	DC37	4 years	BBC	29
BSc Veterinary Nursing and Companion Animal Behaviour	D313	4 years	BBC	29
VETERINARY SCIENCE				
BVSc Veterinary Science	D100	5 years	AAA	36
BVSc Veterinary Science: Accelerated Graduate Entry	D102	4 years	See bristol.ac.uk/vetscience	

Key	
†	Entry by transfer. You have the option to apply for a linked course, then transfer to this course when you have begun your studies at Bristol.
††	Direct entry
‡	Subject to approval
QRM	Quantitative Research Methods
SA	Study Abroad. Some courses also offer Study Abroad with a Modern Language.

Postgraduate taught programmes

Programme	Programme award	Programme	Programme award
Accounting and Finance	MSc	Education (Leadership and Policy)	MSc
Accounting, Finance and Management	MSc	Education (Learning, Technology and Society)	MSc
Advanced Composites	MSc	Education (Mathematics Education)	MSc
Advanced Microelectronic Systems Engineering	MSc	Education (Neuroscience and Education)	MSc
Advanced Quantitative Methods	MRes	Education (Open Pathway)	MSc
Aerial Robotics	MSc	Education (Policy and International Development)	MSc
Anthropology	MA	Education (Teaching and Learning)	MSc
Applied Neuropsychology	MSc	Educational Research	MSc
Applied Neuropsychology (Bristol based)	PGDip	Employment, Work and Equality	LLM
Applied Neuropsychology (distance learning)	PGDip	Engineering Mathematics	MSc
Banking and Finance Law	LLM	Engineering with Management	MSc
Banking, Regulation, and Financial Stability	MSc	English Literature	MA
Bioinformatics	MSc	Environmental Policy and Management	MSc
Biomedical Engineering	MSc	Epidemiology	MSc
Biomedical Sciences Research	MSc	Ethnicity and Multiculturalism	MSc
Biorobotics	MSc	European and Global Governance	MSc
Black Humanities	MA	European Legal Studies	LLM
Business Analytics	MSc	Experimental Psychology (conversion)	MSc
Chinese-English Audiovisual Translation	MA	Film and Television	MA
Chinese-English Translation	MA	Finance and Investment	MSc
Climate Change Science and Policy	MSc	Financial Technology with Data Science (subject to approval)	MSc
Clinical Conscious Sedation and Anxiety Management	PGCert	Gender and International Relations	MSc
Clinical Neuropsychology	MSc/PGDip	General Legal Studies	LLM
Clinical Neuropsychology Practice	PGCert	Global Operations and Supply Chain Management	MSc
Clinical Oral Surgery	PGCert	Global Political Economy	MRes
Commercial Law	LLM	Global Wildlife Health and Conservation	MSc
Communication Networks and Signal Processing	MSc	Health and Wellbeing	MRes
Company Law and Corporate Governance	LLM	Health Sciences Research	MRes
Comparative Literatures and Cultures	MA	Health, Law, and Society	LLM
Composition of Music for Film and Television	MA	History	MA
Computer Science (conversion)	MSc	History of Art	MA
Contemporary Identities	MSc	Human Geography: Society and Space	MSc
Creative Writing	MA	Human Resource Management and the Future of Work	MSc
Data Science	MSc	Human Rights Law	LLM
Dental Implantology	MSc/PGCert/PGDip	Image and Video Communications and Signal Processing	MSc
Development and Security	MSc	Innovation and Entrepreneurship	MSc
Digital Health	MSc	International Commercial Law	LLM
Disability Studies: Inclusive Theory and Research	MSc/PGDip	International Development	MSc
Earthquake Engineering and Infrastructure Resilience	MSc	International Law	LLM
East Asian Development and the Global Economy	MSc	International Law and International Relations	LLM
Economics	MSc/MRes	International Relations	MSc
Economics and Finance	MSc	International Security	MSc
Economics, Finance and Management	MSc	Labour Law and Corporate Governance	LLM
Education (Hong Kong)	MSc	Law	MA
Education (Inclusive Education)	MSc	Law and Globalisation	LLM
		Logic and Philosophy of Mathematics	MA

Postgraduate taught programmes (continued)

Programme	Programme award	Programme	Programme award
Management	MSc	Social Science Research Methods (Management)	MSc
Management (Corporate Social Responsibility and Sustainability)	MSc	Social Science Research Methods (Politics)	MSc
Management (Digitalisation and Big Data)	MSc	Social Science Research Methods (Sociology)	MSc
Management (Entrepreneurship and Innovation)	MSc	Social Work	MSc
Management (International Business)	MSc	Social Work Research	MSc/PGDip
Management (International Human Resource Management)	MSc	Socio-Legal Studies	MSc
Management (Marketing)	MSc	Sociology	MSc
Management (Project Management)	MSc	Stem Cells and Regeneration	MSc/PGCert/PGDip
Marketing	MSc	Strategy, Change and Leadership	MSc/PGCert/PGDip
Mathematical Sciences	MSc	Sustainable Futures	MRes
Mathematics of Cybersecurity	MSc	Teaching and Learning for Health Professionals	MSc/PGCert/PGDip
Medieval Studies	MA/PGCert/PGDip	Teaching English to Speakers of Other Languages (TESOL)	MSc
Migration and Mobility Studies	MSc	Theoretical and Practical Clinical Neuropsychology	PGDip
Molecular Neuroscience	MSc	Translation	MA/PGDip
Music	MA	Translational Cardiovascular Medicine	MSc/PGCert/PGDip
Nanoscience and Functional Nanomaterials	MSc	Veterinary Clinical Practice	PGDip
Nuclear Science and Engineering	MSc	Volcanology	MSc
Nutrition, Physical Activity and Public Health	MSc/PGDip	Water and Environmental Management	MSc
Optical Communications and Signal Processing	MSc	Wireless Communications and Signal Processing	MSc
Optoelectronic and Quantum Technologies	MSc		
Oral Medicine	MSc		
Orthopaedic Surgery	MSc/PGCert/PGDip		
Palaebiology	MSc		
Perfusion Science	MSc		
Philosophy	MA/PGDip		
Philosophy and History of Science	MA		
Philosophy of Biological and Cognitive Sciences	MA		
Philosophy of Physics	MA		
Policy Research	MSc/PGDip		
Postgraduate Certificate in Education	PGCE		
Postgraduate Dental Studies	MSc/PGCert/PGDip		
Psychology of Education BPS	MSc		
Public Health	MSc		
Public Law	LLM		
Public Policy	MSc		
Religion	MA		
Reproduction and Development	MSc/PGCert/PGDip		
Robotics	MSc		
Security, Conflict and Human Rights	MRes		
Social and Cultural Theory	MSc		

Postgraduate research programmes

Programme	Programme award	Programme	Programme award
Accounting and Finance	PhD	Innovation and Entrepreneurship	PhD/MPhil
Addiction Research Clinical Training (MRC)	PhD	Integrative Cardiovascular Science (BHF)	PhD
Advanced Composites	PhD	Interactive Artificial Intelligence	PhD
Advanced Quantitative Methods	PhD	Italian	PhD/MPhil
Aerosol Science	PhD	Law	PhD
Aerospace Engineering	PhD/MScR	Management	PhD
Anthropology and Archaeology	PhD/MPhil	Mathematics	PhD/MScR
Biochemistry	PhD/MD/MScR	Mechanical Engineering	PhD/MScR
Biological Sciences	PhD/MScR	Medieval Studies	PhD/MPhil
Cellular and Molecular Medicine	PhD/MD/MScR	Molecular, Genetic and Lifecourse Epidemiology (Wellcome Trust)	PhD
Chemistry	PhD/MScR	Music	PhD/MPhil/MMus
Civil Engineering	PhD/MScR	Oral and Dental Sciences	PhD/MScR
Classics and Ancient History	PhD/MPhil	Philosophy	PhD/MPhil
Composites Manufacture	EngD	Physics	PhD/MScR
Computational Statistics and Data Science: COMPASS	PhD	Physiology, Pharmacology and Neuroscience	PhD/MD/MScR
Computer Science	PhD/MScR	Population Health Sciences	PhD/MD/DSc/MScR
Creative Writing	PhD/MPhil	Psychology	PhD/MScR
Cyber Security (TIPS at Scale)	PhD	Quantum Engineering	PhD
Digital Health and Care	PhD	Religion and Theology	PhD/MPhil
Disability Studies	PhD	Robotics and Autonomous Systems	PhD
Dynamic Molecular Cell Biology (Wellcome Trust)	PhD	Russian	PhD/MPhil
Earth Sciences	PhD/MScR	Security, Conflict and Human Rights	PhD
Economics	PhD	Social Policy	PhD
Education	PhD	Social Work	PhD
Education (Hong Kong)	EdD	Sociology, Politics and International Studies	PhD
Education: Learning, Leadership and Policy	EdD	South West Biosciences (SWBio) Doctoral Training Partnership (BBSRC)	PhD
Educational Psychology	DEdPsy	South West Doctoral Training Partnership (ESRC)	PhD/MSc/MRes
Electrical and Electronic Engineering	PhD/MScR	Sustainable Futures	PhD
Engineering Mathematics	PhD	Technology Enhanced Chemical Synthesis	PhD
English Literature	PhD/MPhil	Theatre and Performance	PhD/MPhil
Exercise, Nutrition and Health	PhD	Translation	PhD/MPhil
Film and Television	PhD/MPhil	Translational Health Sciences	PhD/MD/DSc/MScR
French	PhD/MPhil	Veterinary Sciences	PhD/MScR
Future Innovation in Non-Destructive Evaluation	EngD/PhD		
Geographical Sciences (Human Geography)	PhD/MPhil		
Geographical Sciences (Physical Geography)	PhD/MScR		
German	PhD/MPhil		
Global Environmental Challenges	MScR		
Global Political Economy	PhD		
Great Western Four+ Doctoral Training Partnership (NERC)	PhD		
Health and Wellbeing	PhD		
Hispanic, Portuguese and Latin American Studies	PhD/MPhil		
History	PhD/MPhil		
History of Art	PhD/MPhil		

Location

Bristol's excellent transport links and international airport mean it's easy to explore the UK and further afield by train, bus and plane.

London
 🚆 1h 20m
 🚌 2h 20m

Paris
 ✈️ 1h 20m
 🚆 5h 15m

Bath
 🚆 15m

Madrid
 ✈️ 2h 15m

Cardiff
 🚆 45m

Rome
 ✈️ 2h 35m

Edinburgh
 ✈️ 1h 10m

Dublin
 ✈️ 1h 5m



Travel times are based on typical fastest available journeys as of July 2020 from www.trainline.com, www.eurostar.com, www.nationalexpress.com and www.flight-durations.com

bristol.ac.uk/maps

Visits and events

Explore the University from home with our virtual tours and online events. You can also visit us in person at an open day or book a campus tour. Find out more at bristol.ac.uk/visit.

Our expert staff attend a range of education events worldwide each year. Find out where we will be over the coming months at bristol.ac.uk/international-visits.

How to find us

University of Bristol
 Beacon House
 Queen's Road
 Bristol BS8 1QU, UK

Tel +44 (0)117 394 0229

Undergraduate email
choosebristol-ug@bristol.ac.uk

Postgraduate email
choosebristol-pg@bristol.ac.uk

bristol.ac.uk/international-21

If you need all or part of this publication in an alternative format, please contact us: tel +44 (0)117 394 1649 or email marketing-team@bristol.ac.uk

This prospectus contains information for students planning to start university in autumn 2021. We have made every effort to ensure all details are correct at the time of going to press (July 2020). However, since this information is subject to change, check the University's website for the latest updates: bristol.ac.uk/study

Design: pelotondesign.co.uk

Print: Gemini West

Photography: Bhagesh Sachania, Christy Nunns, Craig Auckland / Liz Eve / Fotohaus, Dan Rowley, Destination Bristol, FineTime Photography, Kristen Grayewski, Martyna Bober

© University of Bristol 2020



Get connected

 @BristolUni

 bristoluniversity

 UniversityofBristol

 UniversityofBristol

 bristol

bristol.ac.uk/international-21