



**St Peter's
Parish Church**

LIMPSFIELD



PARISH NEWS

online at stpeterslimpsfield.org/parish-news

AUTUMN 2019

Come and sing with us!

We welcome new and experienced singers of all ages to join the

ST PETER'S SINGERS

A NEW and exciting **unrobed** singing group

Rehearse at **9.15am on the day**

Sings every third Sunday of the month at the 10am Parish Eucharist:

Launching **Sunday 15 September** then **20 Oct, 17 Nov, 15 Dec**

If you'd like to come and sing, please contact Geoff Martin: geoffvlmartin@gmail.com
07469 406819

 **St Peter's
Parish Church**
LIMPSFIELD

Autumn steps



I announced on 18 August that my wife, Kathryn (presently Vicar of Lingfield & Dormansland, and Area Dean of Tandridge), has been appointed as Canon Chancellor and Vice Dean of Portsmouth Cathedral. This is a wonderful calling and opportunity for her, and one to take.

As Chancellor, she will have particular responsibility for learning and discipleship, community engagement, volunteers, and artistic installations and exhibitions. She will also be responsible for the Cathedral's relationships with other church denominations, with the deanery and local clergy, and with community partners. As Vice Dean, she will represent the Cathedral and chair meetings.

This has come about after a period of prayer, discernment and conversations, and we trust that God is in it. So Portsmouth will now be my direction of travel as well, though it will be sad and hard to leave Limpsfield. There is some uncertainty about timing at the moment, but the likelihood is that Kathryn will start there towards the end of this year. In the light of her appointment, I have begun to explore a couple of possibilities in Portsmouth but these are at an early stage. Please pray for us through this time. There may be a transitional period when Kathryn is there and I am mainly here.

I'm sorry for the uncertainty and I will of course let you know when there is more clarity. There will be plenty of time for more words and more good work to share here. But just to say for now, it has been a privilege and a joy to be your Team Rector over the last 7 years, and I will continue to enjoy that for as long as possible.

At present, on the basis of our St Peter's MAP (Mission Action Plan) we are working to take forward how we best use our resources, develop our music, and share our faith as we continue to serve our parish and witness to the love of Christ for all people.

Whatever steps this autumn holds for you, God bless you

James

Team Rector of Limpsfield & Titsey :

The Rev James Percival (*day off: Monday*)
E-mail: james.lttm@gmail.com

Clergy of the Limpsfield & Tatsfield Team Ministry

The Rev Wendy Harvey (Minister-in-Charge, St Andrew's Limpsfield Chart)
The Rev Ruth Rainbird (St Andrew's, Limpsfield Chart)
The Rev Vince Short *e-mail: vince@lttm.org.uk#*

St Peter's Parish Office

Church Coordinator:

Caroline Campbell
E-mail: stpeterschurch.lttm@gmail.com

Churchwarden:

Jane Tozer
E-mail: janetozer55@hotmail.com

Stepping Stones for little ones: Xplore (for school age children):

Sarah Ching
Helen Kemp

Choir:

Ann Osborn

Verger:

Eleanor Stoneham

Junior Choir:

Geoff Martin

Church Flowers:

Elizabeth Stoughton-Harris

Road Stewards:

Jean Scott

St Peter's Hall Bookings:

Pat Davies

or e-mail: stphlimpsfield@gmail.com

Social media links can be found on page 6.

01883 unless stated
722351

723153
713683
01959 577289

712512

07432 123115

07958 678771
714068
717770

01959 577701
717026
714150
716487

CHURCH INFORMATION

Children at Sunday morning services

Children are welcome every week. Our children's groups meet during term-time only, except on the first Sunday of the month (our All Age Eucharist) and second Sunday of the month (when we have Messy Church in the afternoon). We all start in church together, and then the children go out to the Millennium Room (*Xplore* for school-age children, *Stepping Stones*, for little ones) for activities before returning for communion or blessings with their families. Young families are also welcome to use our **children's area** for little ones in the Gresham Chapel.

All Age Eucharist

This simple Eucharist aims to be relaxed and reverential and to especially meet the needs of families with young children. All members of the church community, old and young alike celebrate together, accompanied by our very own all age choir and orchestra. **Do come along at 9.15am if you would like to sing with the all-age choir (a relaxed and informal choir for all ages and abilities) – simply turn up and give it a go! All are welcome.**

Messy Church

On the second Sunday of every month, from 3.30-5.30pm in the church and Millennium Room, Messy Church offers all ages an afternoon of crafts, activities, celebration and a meal. The Messy Church Sports Club also runs on selected dates (see back cover).

During the week...

Bell Ringing

(Lynda Boast 01883 715085)

Limpsfield Bell Ringers invite you to help us keep our church bells ringing well into the future. Contact Lynda Boast on 715085 to arrange a visit to the tower and find out more about how you can learn. This invitation is open to anybody aged 12 and over, not just church members. Practice night Tuesday.

The Parish Office at the Rectory is open on Tuesday to Friday from 10:00am-1:00pm. The office can be reached on 01883 712512 or e-mail via: stpeterschurch.lttm@gmail.com

Address: St Peter's Church Parish Office, High Street, Limpsfield, RH8 0DG

CHURCH DIARY: SEPTEMBER - NOVEMBER



Everyone of all ages is warmly welcomed to worship at St Peter's. Whether you're familiar with it or not, we hope that you will find love, joy and peace in this place (however noisy it sometimes gets!). Everyone is welcome at the Lord's Table, and no-one is ever turned away. If you do not yet receive Holy Communion, you are welcome to come forward for a blessing. If you would like to find out more about the Christian faith, please speak to James (in person or on **722351** or **james.lttm@gmail.com**), or others.

Weekday Services

MORNING PRAYER

Tuesdays-Fridays 9.15am

HOLY COMMUNION

Wednesdays 10am and most major Holy Days with community coffee morning 10.45am first Wednesday of the month in the Millennium Room (*see lychgate and notice boards for details*)

Date	September
Sun 1 Sep	THE ELEVENTH SUNDAY AFTER TRINITY 8am Holy Communion 10am ALL-AGE EUCHARIST with ALL-AGE CHOIR & CHRISTENING
Sat 7 Sep	2.30pm WEDDING of David Herbert and Hannah Lloyd-Cowan
Sun 8 Sep	TWELFTH SUNDAY AFTER TRINITY 8am Holy Communion at St Andrew's Limpsfield Chart (no 8am at St Peter's) 10am SERVICE OF THE WORD 3.30-5.30pm Messy Church <i>in the Church / Millennium Room</i>
Thu 12 Sep	10.30am-12pm Musical Memories <i>in the Millennium Room</i>

Date	Sept. continued
Sun 15 Sep	THIRTEENTH SUNDAY AFTER TRINITY 8am Holy Communion 10am PARISH EUCHARIST with the launch of the St Peter's Singers <i>(and the start of term for children's groups: Xplore and Stepping Stones in Millennium Room)</i>
Sun 22 Sep	FOURTEENTH SUNDAY AFTER TRINITY 8am Holy Communion 10am PARISH EUCHARIST and Christening with children's groups: Xplore and Stepping Stones in Millennium Room
Sun 29 Sep	ST MICHAEL AND ALL ANGELS (MICHAELMAS) 8am Holy Communion 10am PARISH EUCHARIST with children's groups: Xplore and Stepping Stones in Millennium Room

Date	October
Sun 6 Oct	HARVEST THANKSGIVING 8am Holy Communion 10am HARVEST ALL-AGE FESTIVAL EUCHARIST 12:00pm Harvest Lunch <i>in St Peter's Hall</i> 6:30pm CHORAL EVENSONG
Thu 10 Oct	10.30am-12pm Musical Memories <i>in the Millennium Room</i>
Sat 12 Oct	3pm WEDDING of Richard Martin and Charlene Ting
Sun 13 Oct	SEVENTEENTH SUNDAY AFTER TRINITY 8am Holy Communion 10am SUNG EUCHARIST FOR ALL CREATION 3.30-5.30pm Messy Church <i>in the Church / Millennium Room</i>
Sun 13 Oct	7:30pm Tandridge Deanery Synod meeting <i>in St Peter's Church</i>

Date	Oct. - November
Sun 20 Oct	EIGHTEENTH SUNDAY AFTER TRINITY 8am Holy Communion 10am PARISH EUCHARIST with the St Peter's Singers <i>(and children's groups: Xplore and Stepping Stones in Millennium Room)</i>
Sun 27 Oct	BIBLE SUNDAY <i>(BST ends - clocks go back this morning!)</i> 8am Holy Communion 10am PARISH EUCHARIST with children's group: Stepping Stones in Millennium Room <i>(Xplore on half term)</i>
Sun 3 Nov	ALL SAINTS' 8am Holy Communion 10am ALL-AGE EUCHARIST with ALL-AGE CHOIR & ORCHESTRA 4pm All Souls' Service of Remembrance & Thanksgiving (to remember the departed), <i>followed by tea in St Peter's Church Hall</i>

CHURCH DIARY: NOVEMBER

Date	November
Sun 10 Nov	<p>REMEMBRANCE SUNDAY 8am Holy Communion 10am SERVICE OF REMEMBRANCE <i>with the Limpsfield Royal British Legion and Oxted Band</i></p> <p>3.30-5.30pm Messy Church <i>in the Church / Millennium Room</i></p>
Thu 14 Nov	<p>10.30am-12pm Musical Memories <i>in the Millennium Room</i></p>
Sun 17 Nov	<p>SECOND SUNDAY BEFORE ADVENT 8am Holy Communion 10am PARISH EUCHARIST with the St Peter's Singers and children's groups: <i>Xplore and Stepping Stones in Millennium Room</i></p>
Sun 24 Nov	<p>CHRIST THE KING 8am Holy Communion 10am PARISH EUCHARIST <i>with children's groups: Xplore and Stepping Stones in Millennium Room</i></p>
Sat 30 Nov	<p>Evening: Murder Mystery Evening <i>in St Peter's Church Hall</i></p>
Sun 1 Dec	<p>ADVENT SUNDAY 8am Holy Communion 10am PARISH EUCHARIST ALL-AGE EUCHARIST with ALL-AGE CHOIR & ORCHESTRA</p> <p>6.30pm Advent Carol Service</p>

**Why not follow us
on social media:**



Facebook:

facebook.com/stpeterslimpsfield/



Instagram:

instagram.com/stpeterslimpsfield/



Twitter

twitter.com/peters_church



PARISH REGISTER

1 June - 31st August 2019

FUNERALS & THANKSGIVING SERVICES

26.7.19 Pauline Petch (St James' Titsey)

WEDDINGS

6.7.19 Kerry Hann and Omar Morgan

DATES FOR YOUR DIARIES

Sunday 8 September

3.30-5.30pm Messy Church

starts up again (see back cover for more dates)

Thursday 12 September

10.30am-12pm Musical Memories

in the Millennium Room

A stimulating singing group for all, including those with dementia and their carer.

Sunday 15 September

10am Launch of the St Peter's Singers

– all welcome. (See inside front cover for details)

Sunday 6 October

10am Harvest All-Age Festival

6:30pm Choral Evensong

A celebration of Harvest with well-known Harvest hymns and songs and a collection for the Brixton Food Bank and WaterAid

Sunday 10 November

10am Service of Remembrance

with the Limpsfield Royal British Legion and Oxted Band

Saturday 30 November

Evening: Murder Mystery

in St Peter's Church Hall - see social media for details

TO ADVERTISE IN THIS MAGAZINE CONTACT

Joy Moore

01883 713552

ads@littm.org.uk

Paddy Monk

01883 715758

ads@littm.org.uk

PARISH NEWS

We need your help!

We really need some new feature writers - could you be one of them?

Features are normally:

- about 250, 500, 1000 or 1250 words long
- Supplied with as many photos and illustrations as possible
- about research, visits, holidays, experiences or anything for which you have a passion that you would like to share with your friends and neighbours

**Please send them to us by
15th October 2019**

We welcome contributions from anyone, however young or old.

Email us at:

PetersNews@littm.org.uk

Let's Keep Limpsfield Village Surviving & Thriving

In July, the Prince's Countryside Fund launched its Village Survival Guide – a guide to help rural villages and communities survive and thrive in challenging times and includes many inspirational examples of villages and local businesses who are determined to keep their unique communities going.

For many rural communities, as well as semi-rural village like Limpsfield, it's getting harder and harder to survive and thrive in a modern world where local business is under threat. Limpsfield Parish Council has worked hard to produce the Limpsfield Neighbourhood Plan that

will play a very important part in securing our vision for how we'd like to see our village survive and thrive into the future. This looks at everything from planning, conservation of our historic buildings as well as our green spaces, traffic, local business, communications and infrastructure.

We only have a couple of shops left on the high street, so it's down to us, the residents; businesses and organisations, such as Memorial Stores, Coffee @ Kiwi House, The Bull Inn, The Limpsfield Club, The British Legion, Limpsfield Infants School, St Peter's Church - and all the fabulous community projects, societies and groups to really try to bring the com-

munity together. It's all about involvement, participation and supporting all that's great about our village.

So, what's great about Limpsfield and how are we trying to maintain our village life and how can we do to keep our community thriving?

In order for villages like Limpsfield to survive, it's so important to get involved with community events and activities and support those businesses that are still on our high street or based in our village.

We have an ever-dwindling high street, with so many businesses closing and too much change of

use from commercial to residential property, so it's hugely important that we continue to use and support the businesses that are still here, such as Panda Nursery, Avalanche Gallery, Fancier Dress, Chic Grooming, Coffee @ Kiwi House, Limpsfield Ceramics, Meldon House & Home and Surrey Skin & Laser Clinic. Let's also not forget the lovely gentlemen at Northdown Nursery behind the churchyard who sell fantastic fresh vegetables all year round as well as their Christmas trees.

Village hubs

The four most important hubs in our village are of course Memorial Stores, The Bull Inn, Coffee @ Kiwi House and St Peter's Church.

Memorial Stores. Our fabulous community shop and post office, owned by the Limpsfield community and run by volunteers, recently turned 20 and is the most amazing business.

Its aim is to keep a local stores and post office running in the village for as long as humanly possible, providing much-needed face to face contact and daily social interaction for many people in the village. The Stores is always keen for more volunteers of all ages. It's a great way to get to know your community.

The Bull Inn. Now owned by Enterprising Limpsfield, consisting of over 200 local investors, The Bull Inn has been reinvigorated and offers great food and drink as well as meeting spaces, event spaces, sports events viewing, free local cycle rides and walks with Jon Rayner of Limpsfield Fitness, yoga classes and lots more. Having been at the centre of the village for hundreds of years, we hope this new incarnation will mean it continues to play a huge part for centuries to come! It's also looking for new investors in case you missed out before – info@enterprisinglimpsfield.com.

Coffee @ Kiwi House. This lovely family-run cafe has also become a real hub of the community and hosts lots of events, parties, shopping evenings with local businesses. With free Wi-Fi, it's perfect for informal meetings, or to go through emails etc over a cup of coffee and a piece of Sean's fantastic homemade cakes, which are becoming quite legendary in the village!

St Peter's Church. Always a huge part of every community, whether you're a believer or not, the local church is a great place for all sorts of activities and events; from its regular services, to Messy Church for the children; exhibitions and concerts, choirs and a huge variety of events and activities in its church hall, including fairs, sales, workshops, talks and coffee mornings. It is also of course, the home of Surrey Dance School. St Andrew's Church on Limpsfield Chart also has a very proactive community and

throughout the summer hosts Sunday afternoon teas every week.

Away from the high street, the Limpsfield British Legion has one of the best locations in the village, sitting on the edge of the Limpsfield & Oxted Cricket Club pitch, on the edge of the Limpsfield Chart Golf course and is a fabulous place for a quiet drink, while watching the cricket. It also holds all sorts of events and association meetings, has fabulous food in its restaurant and hosts a weekly pétanque morning – Wednesdays for ladies, Thursdays for Gentlemen - as well as snooker, darts and a wicked cheeseboard on a Sunday!

The Limpsfield Club – undergoing a lot of refurbishment - is a fantastic place to keep healthy and socialise and offers memberships for participation in the various racket sports on offer, but also social

membership too. It's lovely to just sit in the sunshine with a glass of something watching the tennis, even if you couldn't hit a ball to save your life!

Voluntary activities and projects

Limpsfield also takes part in Limpsfield in Bloom every year - part of the RHS Britain in Bloom and tries to get everyone in the village involved in keeping their gardens and the village looking beautiful. Limpsfield in Bloom keeps the village looking beautiful, but also works with Limpsfield Infants School to educate the children on nature, flowers and sustainability. We win gold most years, but the team could definitely do with some more help – so look out for working party dates which are published on their page (and usually shared on the Limpsfield page too).

We're very lucky in that we

have some fabulous activities and projects such as the Community Orchard Project - that is a volunteer led orchard that educates the local infant school about growing fruit etc. They have a photo competition running at the moment, so why not enter? Deadline is October 1. Email helenellson205@btinternet.com for more info.

If you're a fan of fitness training then Jon Rayner's Limpsfield Fitness on the Glebe Meadow has something for everyone and if you have a little one, Panda Nursery next door offers child care while you train. The very sociable and popular Oxted & Limpsfield and Limpsfield Chart Cricket Clubs and Limpsfield Chart Golf Club also provide other leisure pursuits.

There are also a number of great societies and groups to join, including

the Limpsfield Arts Society, Oxted & Limpsfield Music Society, Limpsfield Riding Club, Limpsfield & Oxted District Horticultural Society and the choirs at St Peters and St Andrews.

Communication is so important

There are many people in the village who don't really get out much and for whom a quick chat with their neighbours outside their door, in the stores or the café is a lifeline and the highlight of their day.

There are also lots of busy parents who are back and forth to school or on the train to London and simply don't have the time to go to events and talk to people face to face, but it's so important to try... Just a trip to Memorial Stores on a Saturday morning can really help to make you feel connected and in tune with what's going on!

Of course, not forgetting

our very own Parish News! Produced by St Peter's team and several other people in the village, it's entirely written by locals who give up their time to write interesting and informative articles for you to enjoy. You can now access the magazine online, too.

For those who get most of their information online, then the Limpsfield village website and social media was set up to provide a central point of information and interest, promoting local businesses and general info and goings-on. <https://limpsfieldsurrey.com> and associated Instagram and Facebook accounts - [@limpsfieldsurrey](https://www.instagram.com/limpsfieldsurrey).

HOW YOU CAN HELP YOUR VILLAGE SURVIVE

1. Use your village post office
2. Shop local whenever possible – Memorial Stores is not for profit
3. Go to local council

meetings once in a while – find out what's going on and get involved

4. Use your local pubs and cafes as often as possible
5. Join a local club or society like the horticultural society, arts society or choir
6. Participate in local events and community endeavours like Limpsfield in Bloom
7. Make a point of getting to know and being there for your neighbours
8. Give up some time – an hour a week could make a huge difference to a local person or activity that relies on volunteers

For more information on the Village Survival Guide, go to <https://www.princescountrysidefund.org.uk>, where you can also download a copy.

Sophie Martin

limpsfieldsurrey.com

ST PETER'S CHURCH CHEST

Today we have safes in the vestry for keeping important Registers, Communion Chalice and other items secure.

In the past chests were used for this purpose and these important pieces of church furniture were also usually kept in the Sacristy or Vestry. These were used for safe keeping of church accounts and registers together with other legal documents and valuable vestments and altar cloths.

St Peter's still has a chest. It is constructed of oak with iron straps and nails holding it together in keeping with medieval chests of this type and had three padlocks. The Rector and each of the church wardens held one requiring all three to be present for security. Although the padlocks have been lost



SECRET CHURCH



the keys show the intricate design of the locks.

There are no records to confirm the age of this chest but it is likely to have been in use in the 16th century and maybe earlier and would have been used to keep valuable items belonging to the Church at that time.

An indication of the items expected to be held by churches was provided in a directive in 1368 from Simon, Archbishop of Canterbury. This included important Books of Prayer, appropriate clothing for the clergy and choirs such as Chasubles, Surplices and Copes. Others were: Altar

Frontals; veils for Lent; Bells to announce services and in the belfry with cords for them; Processional and Altar Crosses; a Thurible; Pix and Chalices for the Eucharist; Font with lock; Holy-Water Stoup, and a Paschal Candlestick.

Records still exist of items held by Limpsfield that could have been kept in this Chest. In the 16th Century during the reign of Edward VI Commissioners were appointed to complete inventories of goods and ornaments held by each Church. The Clergy and Churchwardens were made accountable for items found missing at later visits. The range of items varied as shown in the local records.

In 1547 listed in the Parish of Lymsfeld:

- ✕ one chalice of silver
- ✕ two copes one of velvet the other of silk;
- ✕ two vestments one crimson other blue satin with albs and all other ornaments unto the same
- ✕ One pair of organs and in the steeple some great bells.

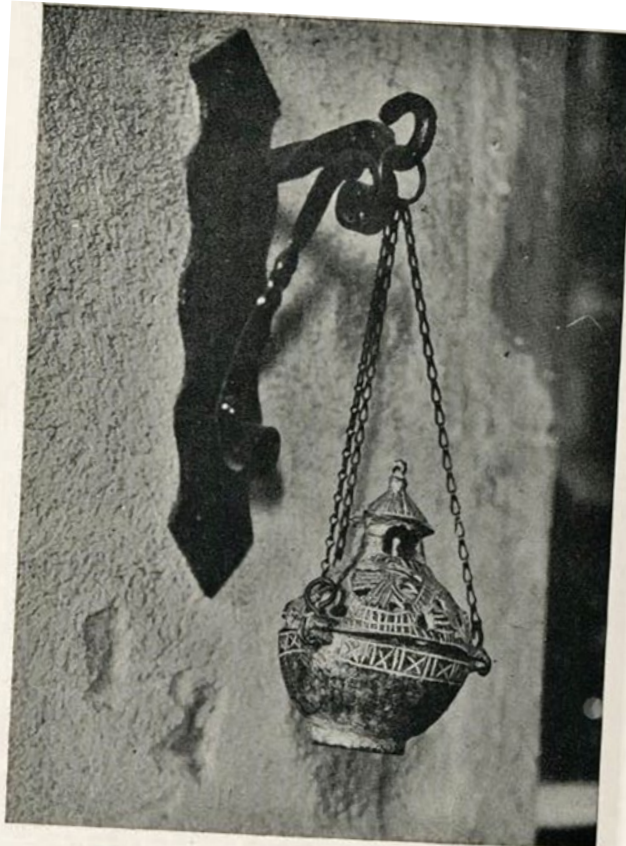
Church Wardens were John Midhurst and Richard Broke.

It also confirmed that no goods or other ornaments were sold, stolen or purloined since the first inventory with Antonie Hethe and Robert Drencher Sidesmen and Thomas Stone and John Burton Wardens responsible.

In March 1549 the items listed were unchanged but it confirmed that no other plate, jewels, ornaments or bells were held. However, a 12th or 13th Century censer was

found under the floor of the church. It was on display as shown in the photograph but it was stolen and it was not recorded in the Inventories.

In an inventory for Tatsfield there is a reference that apart from a chalice and two bells in the steeple, all other items on the last inventory were stolen from



LIMPSFIELD: 12th-cent. Censer (Chains are modern).

J. F. East, photo.



the church by thieves at night.

Tytsey in 1547 had:

- ✦ a chalice of silver and gilt
- ✦ one cross of copper and gilt
- ✦ one vestment of red damask
- ✦ two linen alter cloths
- ✦ a red cope
- ✦ a sacryng (sanctus) bell as well as two bells in the steeple.

The Inventory for St Mary's, Oxted in 1547 had a significantly longer list including:

- ✦ two silver chalices
- ✦ three copes, one of velvet and silk, one of silk and one of cloth of gold
- ✦ five other vestments one of velvet and four of

silk

- ✦ four tunics for deacons of silk
- ✦ altar cloths and veils
- ✦ a charger of pewter
- ✦ two great candlesticks and pair of small candlesticks
- ✦ Two stoups for holy water and two crosses
- ✦ two procession bells and one sacryng bell as well as bells in the steeple,

The Chest would have been the Church safe at that time and although the contents have gone it has survived.

Anthony Horsford

The Lost Pubs of Limpsfield (pt 1)

Ian Tolley grew up in Rodney House (up the sandy track opposite Sylvan Close and on our front cover). Here he explores its fascinating past

I was never much of a gardener, but my parent's attempts to interest me led to an unusual discovery. Whilst raking through the earth of my child-sized plot (aged about 10) I found a strange smooth white cylindrical "stone". Then another and another set amidst chips of blue glazed pottery. When I showed it to my parents they identified it as a broken clay pipe stem. Later I studied archaeology and learned they were almost certainly made between the sixteenth and nineteenth centuries and the china clay for them came from the West Country.

Once I was aware I soon realised that our garden was covered with them. Occasionally I would come across one with the bowl still attached (the more ornate the bowl the more likely to be Victorian) or retaining a trace of the red wax on the end which stopped the pipe sticking to the smoker's lips. My Mum explained it was because our house had been a pub. As a teenager I imagined frock-coated



drinkers stumbling out into our back garden for a smoke and then flinging the fragile pipes into the

undergrowth. In hot weather you can clearly see the outline of a large well in the grass outside our

back door – an additional hazard for the inebriated.

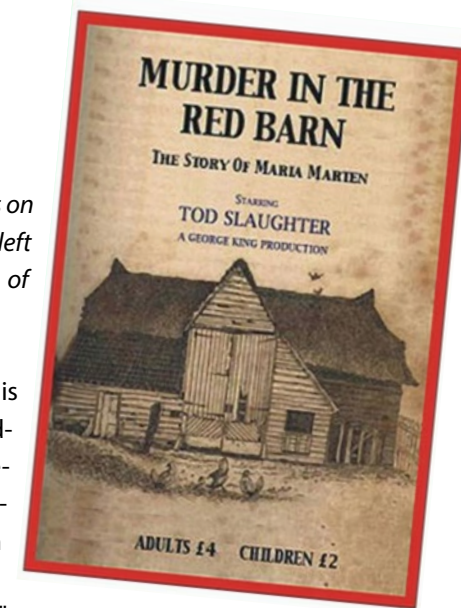
That desire to imagine past customers at "The Lord Rodney" (or "The Coach and Horses" as it was named at various times in its history) continued into adulthood. It was difficult to imagine people playing games in the skittle alley adjoining Rodney Cottage. However, since I'd used it as a film studio as a teenager I did relate to the story in Lewis Fry's book "Oxted and Limpsfield" describing a visit there in 1887 of the famous Gennett's dancing dolls: "the piece played there was 'Maria Martin or the Murder in the Red Barn', also 'Pepper's Ghost', the price of the seats was 6d and 2d, these consisted of forms, and at the most held 25 people (a crowded audience), and the band consisted of a violin and mouth reed instrument or pipes. Personally I have not seen anything more exciting or wonderful

since. The Show was on two nights and left with every intention of returning."

Pepper's Ghost is still familiar to modern audiences (despite being invented in 1862 it is often used in concerts when "holographic" vocalists posthumously duet with deceased singers). However, you might not know "Murder in the Red Barn" so well. It's a fabulously lurid tale about a real life murder committed in Polstead in Suffolk in 1827. Maria Marten is the naive village lass who falls in love with the unsavoury squire's son William "Foxy" Corder. When she became pregnant he persuades her to meet him at the Red Barn, promising that they would elope to Ipswich and be married. That was the last time Maria was seen alive. Following their elopement her family re-

ceived letters from William saying she was well but could not come back to Polstead for fear of censure over her illegitimate child. She could not write herself as she had hurt her hand or her letters were mysteriously been lost in the post.

He would have got away with it if it hadn't been for Maria's stepmother, Ann. She had a dream that her stepdaughter had been murdered and was buried under the floor of the Red Barn. Her skeleton was duly uncovered with a green handkerchief belonging to William Corder



Execution of Wm. Corder, CONFESSION

With the Copy of a Letter addressed to his Wife
ONE HOUR BEFORE HIS DEATH, AND OTHER INTERESTING PARTICULARS.



TAKEN THE DAY OF HIS COMMITMENT.

ON Monday morning, at twelve o'clock, Wm. Corder suffered the extreme penalty of the law at Bury St. Edmund's, for the Willful Murder of Maria Marten, on the 18th of May, 1827, at the Red Barn, at Polstead. The particulars of this case has for some time engaged the public attention, and as the circumstances attending this dreadful Murder are so well known, we shall confine ourselves to his behaviour the day previous and morning of execution.—On Sunday morning Corder attended the Chapel of the Prison, where an affecting discourse was delivered by the Clergyman. Corder kept his face concealed the whole of the service, & frequently sobbed aloud. At two o'clock his wife took her leave of him; both appeared in a state of the greatest agony, when taking a final leave of each other. At one o'clock he retired to rest, and slept till six o'clock on the following morning. At this hour he was visited by the Chaplain who continued with him till the fatal hour. He attended the Chapel, and continued in devotion till ten minutes before twelve, when he was brought into the yard and pinioned by Foxton, the hangman, who was brought from London for the purpose. He appeared resigned, but was so weak as to be unable to stand without support; when his cravat was removed he groaned heavily, and appeared to be labouring under great mental agony. In passing the different yards to the place of execution, he shook hands with the various prisoners and said "Good bye, God bless you!" Having arrived at the scaffold, he was supported up the steps; he looked wildly around, and a few moments before the drop fell, he groaned heavily, and would have fallen had not two constables have held him up. The drop fell, he did not struggle; but he raised his hands once or twice; the hangman pulled his legs, and he was in a moment dead.

CORDER'S LETTER TO HIS WIFE.
My Life's loved Companion—I am now a going to the fatal scaffold, and I have a lively hope of obtaining mercy and pardon for my numerous offences. May heaven bless and protect you through this transitory vale of misery; and which, when we meet again, may it be in the regions of everlasting bliss. Adieu, my love, for ever, a last prayer's that God will endue you with patience, fortitude, and resignation to his will. Rest assured that his wise providence works all things together for good. The awful sentence which has been passed upon me, & which I am now summoned to answer, I confess is very just, and I die in peace with all mankind, truly grateful for the kindness I have received from Mr. Orridge, and the religious consolation from the Rev. Mr. Stocking, who has promised to take my last words to you. (No Signature.)
The above was written with pencil, on a blank leaf at the end of a volume of "Bair's Sermons," which appears to have been a gift of Mrs. Corder to her husband, from the following words written on another leaf at the beginning of the book:—"Mary Corder to her husband William Corder—a birth-day present, June 22, 1828." Corder attained his 24th year on that day.

CORDER'S CONFESSION.

"Bury Gaol, August 10, 1828—Condemned Cell, Sunday Evening, half-past Eleven.
"I acknowledge being guilty of the death of poor Maria Ma ten, by shooting her with a pistol. The particulars are as follows.—When we left her father's house we began quarrelling about the burial of the child, she apprehending that the place wherein it was deposited would be found out. The quarrel continued for about three quarters of an hour upon this and other subjects. A scuffle ensued, and during the scuffle, and at the time I think that she had hold of me, I took the pistol from the side pocket of my velvet jacket, and fired. She fell, and died in an instant. I never saw even a struggle. I was overwhelmed with agitation and dismay—the body fell near the front doors on the floor of the barn. A vast quantity of blood issued from the wound, and ran on the floor and through the crevices. Having determined to bury the body in the barn (about two hours after she was dead), I went and borrowed the spade of Mrs. Stowe; but before I went there, I dragged the body from the barn into the chaff-house, and locked up the barn. I returned again to the barn, and began to dig the hole, but the spade being a bad one, and the earth firm and hard, I was forced to go home, for a pick-axe, and a better spade, with which I dug the hole and then buried the body. I think I dragged the body by the handkerchief that was tied round her neck. It was dark when I finished covering up the body. I went the next day and washed the blood from the barn floor. I declare to Almighty God, I had no sharp instrument about me, and that no other wound but the one made by the pistol was inflicted by me. I have been guilty of great illiness, and at times led a dissolute life, but I hope through the mercy of God to be forgiven."
Witness to the signing by the said William Corder,
JOHN ORRIDGE, Gaoler.
Mr. Broderick had 140 guineas for defending Corder.

THE RED BARN.

The Scene of the Murder, and where the Body of Maria Marten was found concealed.



Printed by T. BIRT, Great St. Andrew-Street, (Wholesale and Retail), 10, Seven Dials, London.

There followed a sensational trial – widely reported in the newspapers. Corder's defence that Maria had committed suicide after an argument was quickly dismissed and he was hung shortly before noon on August 11th 1828 in front of between 7000 and 20000 onlookers. As he mounted the scaffold Corder was reported to say "I am guilty; my sentence is just; I deserve my fate; and, may God have mercy on my soul." Inventively after his death Corder's skin was tanned and used to cover a book outlining his crimes. Much later rumours circulated that he had also had an affair with stepmother Ann who conspired with him to dispose of poor Maria so they could continue their trysts. She

then invented the story of the dream when she learned he had married another woman in Brentford. This was pre-cinema blockbuster entertainment nineteenth century style. I can see the skittle alley audiences must have been thrilled.

The Rodney was a place of education as well as entertainment. Lady Ursula Benn grew up in the village and recalled in a talk in 1992 that "there was a person called Sam Marsh who set up a riding school at the Rodney – there were two riding schools in Limpsfield. There was an old man called Poole who hung out at the Bull and there was Sam Marsh at the Rodney. Sam Marsh actually became quite a famous man and was a very smart young man at the time. He and Miss Helen Thompson, who lived at the Bower, set up the Pony Club. Miss Thompson was a wonderful person and, even after the days when horses were no longer seen very much, you used to see her driving her very smart trap, high up with big wheels."

Lady Ursula did not undervalue Sam Marsh, a former Olympic equestrian and inventor of the 'Sam Marsh bit' who founded a number of Pony Clubs in our area. He is lauded in Mary Soames' biography "A Daughter's Tale – The Memoire of Winston and Clementine Churchill's Youngest Daughter" as "a much sought after master of equitation". Indeed he was the person who alerted her to the fact that war had broken out: "we were in the stable yard when Sam Marsh came out and told us the Prime Minister would be broadcasting shortly and invited us to come into the sitting room to hear him. At 11.15 came the brief statement by Mr Chamberlain that, since no reply had been received to Britain's ultimatum and 'consequently, this country is at war with Germany'...Sam Marsh abruptly sent us all to get saddled up – and he then led us in a gallop all



Mary Soames

around the farm, jumping the (normally sacrosanct) hunter trials fences. It was such a lovely, bright breezy day, and this gesture of sheer theatre was the perfect touch – releasing tensions and emotions. But I believe for us all it marked quite dramatically the end of our world as we had known it."

You can find the whole world represented in a pub. Education, entertainment and, of course, (local) politics. If you look at the photo of the Rodney overleaf you'll notice the set of steps up to a meeting room on the right hand side. On 12th March 1846 a meeting took place here to launch a land grab by seventeen local landowners who attempted to force the squire to partition off the Common for their private use under the newly passed

Incllosures Act. I won't go into detail about Seymour Teulon's plan except to say on behalf of all of us who enjoy unfettered access to the Common that I'm glad

it failed (with apologies to the descendants of the seventeen). The story is also a fine tribute to the intransigence of St Peter's Church Wardens. If you'd like to know the full story do ask my Dad (John Tolley) as he thoroughly researched this episode for a lecture for the History Society a few years ago.



Do you have any stories you could share about your home or the past inhabitants of our Parish?
Please do send them to us at petersnews@littm.org.uk

The pub eventually lost its license in 1926 and at that point became a private home. Why? Perhaps the location off the High Street wasn't ideal for enticing customers? For many years it had catered to the "lower labouring classes" and now these were in decline with the rise of industrialised agriculture. The itinerant summer workers who used to sleep in the woods and drink in the "tramps bar" stopped coming. The old pub started a new chapter as a (generally) quieter place.

However, the ghosts of the past do linger. You can still see the wooden foundation post for the pub sign in the sandy track just up from the High Street. The quoits court and orchard are now gone but the skittle alley remains (albeit largely rebuilt) and pieces of broken bottles and plates

and pipe stems are still scattered through the garden. Under the ground the old wells sleep undisturbed. And we still have archival records, and pictures and the evocative fragments such as this one recalled by Annie Laura Saunders whose parents owned the Coach and Horses at the end of the 19th Century: *"We children slept in two long rooms over the private bar where the tradesmen sat, and we listened to their singing when we were in bed and learned the popular songs of the day. During the Summer holidays mother would pack up a basket of food each day and sent us out in the care of brother Will. We spent days playing and exploring the woods and commons of Limpsfield and would return grubby and hungry in time for tea."* Times change, but our buildings remember and, as long as we keep telling the stories, so will we.

Ian Tolley

Two spells in Colditz

John Tolley barely escapes from
a memorable singing trip

“You see,” said my cousin in winning tones, *“he needs some more tenors!”*. Actually, I didn’t need much persuading. Karen had always had struck me as having had a romantic life, starting off by getting a degree in Persian, travelling around various countries in British embassies and then giving it all up and learning Welsh (as one does) so that she can live in that country and advise the Councils there. Her house is the most beautiful Welsh village, which is lovely to visit. And she and her two friends sing in a choir run by John Huw Davies, than whom there is no-one less Welsh. John is a former BBC singer and conductor. He runs courses in choral and solo singing, even for the English.

“I’d love to do a singing course,” I replied, *“where is this one? Llandudno? Caernavon? Aberystwyth?”* *“Colditz!”* she replied, *“in the castle!”* *“Er – yes,”* said I, *“can we get out at the end?”* She made a rude remark and rang off.

Many people have asked me whether I didn’t find it creepy, going to an infamous 2nd world war



The "sirens" - John's cousin Karen and her friends Gill and Jenny



prisoner of war camp. I had read the book by P R Reid and the castle does have a museum which has various artifacts and other memorabilia from the time. We were taken on a tour to see where Airey Neave sneaked out disguised as a German officer, amongst other escape attempts by several people of many nationalities. The most successful escapees were the French and their long and complex route involving, inter alia, a chimney and tunnel under the chapel. And you can see the place where the British built the glider which was never launched because they were liberated first.

The centre of the village of Colditz is lovely, with the castle, perched high above the river, making a real picture. It was originally a wedding gift to a princess

who married a king of Saxony and was a family home for many years. After the demise of the Kingdom, it became a prison and a mental asylum until the War. Under the East German regime it deteriorated before being restored as part of the attempt by the united Germany to improve the tourist visibility of the impoverished eastern provinces. Because of its wartime connections it is now one of the most visited castles in Saxony.

Part of Colditz today is a Youth Hostel. The rest is being developed as the Music Conservatoire for the state of Saxony. It is a very fine place to stay, clean and simple, and excellent as a place for running a course for singers. There are lots of rooms, you see, and a place for sitting out and eating overlooking the river. Leipzig

and Dresden can be accessed easily by car or coach and in the two holidays I spent there we sang in both of Bach's churches in Leipzig and in a restored church in Dresden. Round about the castle is a hinterland of many other castles most of which are really worth visiting.

A music course of this kind is not just a way of preparing for concerts or even of learning to sing in the John Huw Davies approved manner (which involves a lot of singing "oooooooo" and making your expression approximate to that of a village idiot - Ann Osborn will tell you the theory behind that). There were at least three informal evening concerts involving singers, actors, writers and composers from the group and marvellously compered by an amazing Scottish lady now living in

Manchester, who, though now in her sixties, can apparently remember in full long hilarious rhymes she was taught by her mother. There were talks and films about history - particularly about the East German regime. Karen told us what it was like to be in the British Embassy to East Berlin and how every contact she made and person she met was monitored by the Stasi - the East German secret police. Local people told us about the changes which were made after re-unification and what life was like then and now. Lastly, you do meet some really interesting people from all over the UK and beyond, even from Wales, with one interest in common - singing.

So what were my two spells in Colditz like? Quite frankly, they were magical.

John Tolley

The Glebe and Brook Fields

A major achievement of the Limpsfield Neighbourhood Plan was to successfully get the Glebe and Brook fields designated as Local Green Spaces. This gives the space a high level of protection from building development.

It is important, though, to realise that this designation does not give anyone any new rights to use the fields. Both fields remain private land and part of a working farm, with a single right of way from Granville Road to Detillens Lane. There are no other rights of way of any kind.

Park Farm use these fields for the grazing of cattle (currently for beef) and generally take a relaxed view of people using the fields responsibly. Without the cattle grazing and the care given by the farm, the field would rapidly become an impenetrable mess of nettles, thistles and brambles resulting in the loss of a valuable community asset.



Park Farm is also a source of ethically produced beef from cattle with high welfare standards. The community should support them in any way that they can.

The group of people who can do the most to help the farm are dog walkers. Firstly, please keep your dog under full control. If your dog is not well trained it should be on a lead. The cattle are generally docile and accepting of people and dogs walking by but please remember it is their field not yours. If your dog worries the cattle it can stress the cattle and cause them to act in an unpredictable and dangerous way.

Most important is to clear up after your dog. Dogs can carry a number of infectious diseases and parasites that can affect cattle and cause the loss of unborn calves; I believe that one calf has already

been lost this year. Your dog should receive regular veterinary care to reduce the possibility of carrying an infection but even so it is essential to clear up after your dog.

At present we have a wonderful asset for us all to enjoy at no cost to the community. Please can we ensure that we all treat it with the respect that it deserves.

Martin Hogbin



St William launches *Courtyard Gardens* in Oxted

St William, a joint venture between National Grid and the Berkeley Group, have now launched *Courtyard Gardens* in Oxted. Located in the heart of the town centre just off the bustling high street, *Courtyard Gardens* comprises 111 one, two and three-bedroom apartments and penthouses built around a central landscaped courtyard. The homes are open-plan, and each one has a covered private terrace or bal-

cony, with many overlooking the central courtyard gardens. The regeneration of this town centre site is the latest development from St William, which is transforming gasholder sites that have been closed to the public for decades and creating beautiful new places to live.



Courtyard Gardens is classically inspired with the buildings echoing a Mansion block design with entrance feature pillars, sliding sash windows and ornate iron work.

Residences have floor-to-ceiling windows which fill the open-plan homes with natural light and many offer views of either the landscaped courtyards or the North Downs. The homes are designed to create defined areas within the apartments, including dedicated areas for dining and entertaining. Each of the homes has gated parking within the basement.



Residents at *Courtyard Gardens* will benefit from private outdoor space across the development's grounds, located just off Oxted's boutique lined high street. The landscaping at *Courtyard Gardens* has been designed by Charnwood Landscape Design to be safe, social and sustainable, with perennial planting across the site encouraging biodiversity and plans for resident allotments. The adjoining high street offers a wide selection of independent restaurants

and cafes, a community theatre and a cinema as well as a leisure centre and Oxted's Master Park are a short walk from the development.

Sitting at the foot of the North Downs, residents can easily access all that the countryside has to offer including bike routes such as Yew Tree Way, bridal ways and the North Down Pilgrims Way, while still being within easy reach of London.

Prices start from £327,000 for a one bedroom apartment. For further information, or to register your interest, please call **01883 770600** or visit the website at **courtyardgardensoxted.com**.

Editors note: An excellent model can be seen in the office of Robert Leech at 72 Station Road East, Oxted (telephone **01883 717273**) together with further information on the development.



YMCA

The new sports hall at the YMCA in Redhill is fully staffed and specially equipped for those of all ages with disabilities and other health issues

YMCA East Surrey offers a wide range of disability sport and physical activity sessions for everybody, regardless of age and ability. Their new Inclusive Sports facility at Princes Road, Redhill, is now up and running and has been designed specifically as a centre of excellence for disability sport, health and wellbeing, encouraging the whole community to lead a more active and healthier lifestyle.

Sports sessions include boccia (a disability sport much like bowls) wheelchair badminton, inclusive rugby, dance, yoga, cycling, walking football and many other activities. Disability multi-sport and gym activity sessions are also timetabled and are both fully inclusive and led by qualified coaches or instructors. Anyone is welcome.

With phase one of the project now completed, the Inclusive Sports Facility offers a new state-of-the-art sports hall, activity room at first floor level, accessible toilets and changing facilities. There are improved facilities for children attending out of school childcare and recreational activities.

Fay, 29, attends our Boccia sessions and is eloquent about the improvements which the sport has brought to her life. "I wasn't the most confident person when I first joined the YMCA Boccia Club," she admits. "I didn't know how good I'd be at a sport I hadn't played since

school and, when I started, I couldn't throw very far at all."

I am accompanied by a carer," she explains. "It's hard to have to rely on someone else when you are mentally

sport. It is the only Boccia Club in England to be accredited with Sport England's Clubmark.

"My mental health has definitely improved since I've been coming to the Boccia Club," says Fay. "I enjoy the social side as there's often someone new joining in and the friendly banter is uplifting."

"Boccia is far more than just a hobby for me," says Fay. "Playing gives me a feeling of control over what I do and without it, everything would seem a little pointless. I want to take it further and possibly play for England one day. I was never really a lover of sport before. Now Boccia has made me an athlete."

YMCA Chief Executive Ian Burks says:

independent."

"I have a lot of difficulties in my life but when I play Boccia, they all go away."

YMCA East Surrey's Boccia Club gives children and adults with additional needs or disabilities an opportunity to take part in a fully accessible Paralympic

Two years later, Fay is a passionate and committed member of YMCA East Surrey's Boccia team and hates it if she misses a session. Many sporting activities aren't suitable for her as she has Cerebral Palsy and uses a wheelchair.

"I need 24-hour care and find it frustrating if people treat me differently because

"Isn't it astonishing that recent reports show the actual number of people with disabilities taking part in community activities has gone down since the great success of the 2012 London Paralympics? This is thought to be



from a lack of appropriate facilities and the lack of funds for them."

"We are delighted that our flagship Inclusive Sports Facility will be a major move in this part of Surrey to provide accessible sport for people with disabilities and health issues in the years to come."



Further information regarding the disability sports sessions available from YMCA East Surrey can be found at www.ymcaeast Surrey.org.uk or by calling 01737 779979.



Lifeboats

RNLI AUTUMN FAIR

Oxted Community Hall,
53 Church Lane, Oxted, RH8 9NB

Saturday 26th October 2019
10 a.m – 1.00 p.m.

Children's books, jewellery,
RNLI Christmas cards etc. and many other
unique & appealing products

Entrance £2; Children free
Please come (& bring a friend)
All very welcome

Further enquiries: 01883 717083

Orpheus

Alan Titchmarsh to appear at Oxted's Barn Theatre in support of the Orpheus Centre

When: Friday 25 October at 7.30 pm

Where: The Barn Theatre, 25 Bluehouse Lane, Oxted, Surrey RH8 0AA

One of the UK's top gardening experts, Alan Titchmarsh, is looking for guests to join him as he steps on stage with Sir Richard Stilgoe, musician and composer, in aid of the Orpheus Centre.

Alan was the presenter of Gardeners' World, the hugely popular Ground Force and The Alan Titchmarsh Show. He writes regularly in BBC Gardeners' World Magazine, Country Life and the Daily Express and is a Vice President of the Royal Horticultural Society. You can see him currently in Secrets of the National Trust on Channel 5 and in the ninth series of Love Your Garden on ITV this autumn.

"I'm so delighted to be able to support this marvellous charity. More: I'll be sharing some stories, hearing the amazing Orpheus students perform and loving every second. I'll see you there, glass of wine in hand," he laughed.

Hosted by Sir Richard, the evening will start with a performance by Orpheus students, followed by an on-stage interview with Alan and the opportunity for audience members to ask questions. Guests will enjoy a complimentary glass of wine with Alan after the show.

All profits from the event will go to the Orpheus Centre in Godstone. Orpheus is a registered charity (1105213) and an independent college for young disabled adults with a passion for the performing arts.

Tickets cost £35 (premium), £30 (standard) or £25 (concessions) and are available for purchase either by calling the Barn Theatre on **01959 561811** or online at **www.orpheus.org.uk/alant**



Coffee and chat

1st Wednesday in the month

Have you ever been to the Millennium Room behind St. Peter's Church? There is a monthly Community Coffee morning held there on the 1st Wednesday in the month with good coffee and excellent cakes, to give Limpsfield residents a chance to meet neighbours.

In October, as the nights are starting to draw in, we invite you to bring a favourite book or puzzle to swop. The first thing I bought at the Church Fete was a couple of puzzles which are my secret addiction!

In November we will be selling Fair Trade gifts and Christmas Cards, courtesy of Moyna Bridge. Last year we had a very successful morning in spite of torrential rain. Please come and join us and bring a friend.

Christmas at Brixton Food Bank

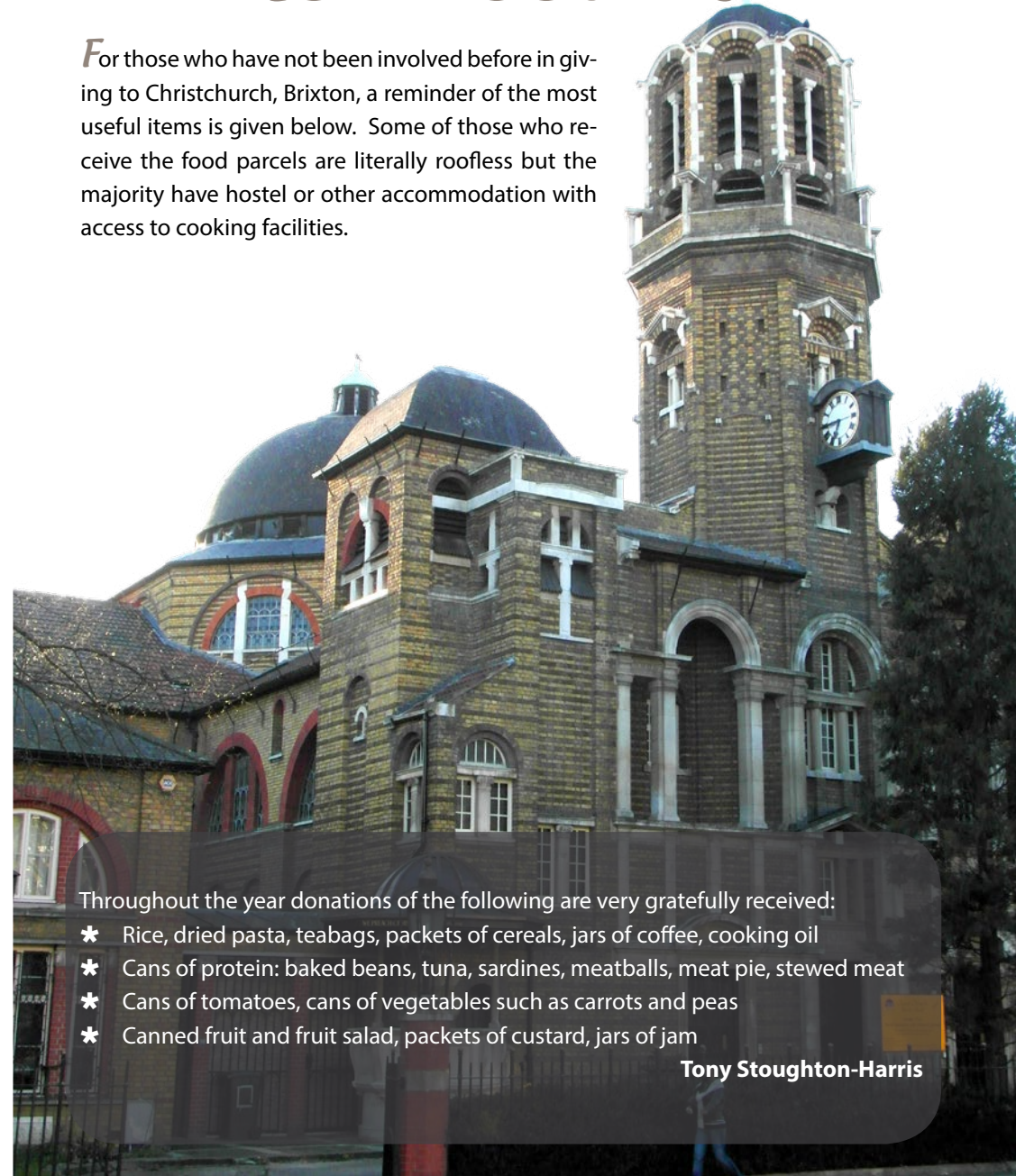
Oh dear – Christmas goods will start appearing in the shops soon which always makes my heart sink! It always seems so early to think about Christmas, with the warm days we are experiencing but Christchurch, Brixton, was very pleased to receive the beautiful shoe boxes last Christmas. They shared out the contents and really appreciated the love and care poured into the preparation and thought about the contents.

The Pastoral Committee has decided to repeat the idea this year and we will be reminding people nearer Christmas. If you have a shoe box spare, please hang onto it – we will need it later in the year. In the meantime, enjoy the sunshine and relax.

Helen Ireland

Brixton Food Bank

*F*or those who have not been involved before in giving to Christchurch, Brixton, a reminder of the most useful items is given below. Some of those who receive the food parcels are literally roofless but the majority have hostel or other accommodation with access to cooking facilities.



Throughout the year donations of the following are very gratefully received:

- * Rice, dried pasta, teabags, packets of cereals, jars of coffee, cooking oil
- * Cans of protein: baked beans, tuna, sardines, meatballs, meat pie, stewed meat
- * Cans of tomatoes, cans of vegetables such as carrots and peas
- * Canned fruit and fruit salad, packets of custard, jars of jam

Tony Stoughton-Harris

Alex's Books

The Doll Factory by Elizabeth Macneal

There was a buzz about this debut novel last year when 14 publishers entered into a bidding war to secure the rights. Finally it is here, and Elizabeth Macneal has given us a richly satisfying read.

Set in 1850's London, it is an historical thriller with a distinctly Dickensian feel to it. Against the backdrop of The Great Exhibition, we meet Iris and her sister Rose who work for Mrs Salter's Doll Emporium painting the delicate faces of the dolls that she sells. Mrs Salter is a cruel lady and Iris has a deep desire to break free and fulfil the artistic intentions that burn inside her, even though this would mean abandoning her beloved sister. A chance meeting brings her to the attention of Louis Frost, a member of the Pre-Raphaelite Brotherhood of artists, and with it an opportunity to go and work for him as an artist's model and learn to paint with him in return. But she also comes to the attention of Silas, a socially awkward taxidermist who having briefly met Iris at an exhibition, starts to develop an unhealthy obsession with her.

Iris takes a brave leap and accepts Louis' offer of employment and tutelage, against the wishes of all her family, and they disown her. In some ways she is an early feminist – she dares to break free of the societal expectations to pursue her love of art, but the paradox is that she becomes an artist's model, confined in art form in his paintings. The theme of imprisonment will continue to raise its

head throughout the novel.

Meanwhile Silas' gentle menace in the background is increasing, and the novel really takes a dramatic turn when we realise the extent of his intentions. Swirling through the great movements of the time (art, science and progress), suddenly obsession and possession play a significant part and we find ourselves sitting squarely in a gothic thriller. With every page turn, the dark underbelly of London threatens at Iris' newfound happiness and artistic delight, and you can't help but turn those pages a little quicker.

The novel has a truly authentic voice; the characterisation is extremely believable, and you are unquestionably drawn into this world of dark and light. From the opening lines, there is a simple beauty to Macneal's style and without being flowery she evokes a fantastic sense of time and place. In Iris, she has created a



likeable and unusually strong female character for the period it is set in and there is no doubt that Iris needs that strength as Silas starts to take centre-stage in the novel.

If you enjoyed *The Miniaturist* or *The Mermaid* and Mrs Hancock, you will love this novel but equally if you like a thriller there is much to enjoy here. *The Doll Factory* has

already been snapped up for TV adaptation and has "Sunday Night Drama" written all over it, but it is always exciting to read a debut novel of this calibre from a new young author – the confidence is stunning. I can't wait to see what she does next...

Alex Wilkinson

The Doll Factory is published by Pan Macmillan in paperback rrp £12.99.

We Can Carry Kevan

Book Review

In the last issue we carried an article by Mike Pocock, telling how he had met some Americans who were carrying their friend, Kevin Chandler, round Europe in a specially made back-pack. It was a story of triumph and love between soul mates. Now Kevan has written a book about his adventures and it includes a section on visiting China the following year. Here's a review.

Our article only told half the story. Kevan Chandler has spinal muscular dystrophy and although he is remarkably independent he does require assistance with bathing and going to the loo, as well as simply moving about. Going away for three weeks requires a degree of assistance which many would balk at, but not Kevan's friends. They suggested they could take Kevan, on their backs, around Europe and Kevan thought carefully about it and then leapt at the chance. Seeing the world from high up, above the head height of his tall friends rather than low down from his motorised wheel chair, becomes a terrific focus for the book, and one which most able bodied people may not have appreciated before reading. As well as the view, Kevan was able to go



to places to which his wheel chair would have been completely unable to penetrate.

One such locale are the up hill and down dale walks on muddy and stony ground which surround this area, and where Kevan and his team first came into contact with Mike, who had been corresponding by email with them in America before they started. The walks were no mean achievement even for the very fittest of friends with Kevan's weight on their backs, so the team did quite a bit of practising before they started. Mike volunteered his share of carrying as well, and one of the features of the book are the asides with the views of others in the party. In one of these, Mike explains how heavy Kevan could be, but what a joy he was to carry!

It is a very well written book: Kevan has a degree in counselling from John Wesley College, he's the lead singer in a metal band, he has a lasting fascination with J. M. Barrie and Peter Pan (who features quite heavily in the book!), he speaks worldwide about his unique life with a disability and has written several other books, but none are so personal as this. This volume spells out the joys and the difficulties of the journey in an imaginary and graphic way. The group were obviously all committed Christians and there is quite a lot about God, but even the Almighty does

not detract from the superb scene setting in the book, describing some areas I know well and many others that I don't know at all, with wit and imagery.

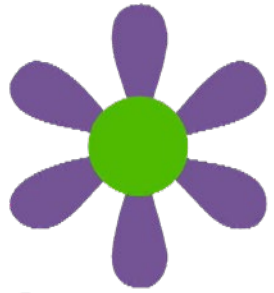
One of the highlights of the book is the visit to the ancient monastery in Ireland, at Skellig Michael. Here the terrain was rather steeper than the Pilgrim's Way and the story conveyed on the page is breathtaking.

When the team returned to America, Kevan had the idea of repeating the journey in China, and taking some of the back packs - specially made by a leading sports company - with them to offer to people who might benefit from the unique experience. There is a very moving piece at the end of the book when a little girl with a similar affliction to Kevan tries the back pack for the first time. It is a lesson to every able bodied person to read about some of the problems which the less well able deal with every day of their lives. The book offers a terrific insight into the lands around here, which feature quite strongly. It is also an inspiration to everyone - all those who claim to be 'friends' but can't see what true friendship means, and anyone who has a disability of any kind but can't manage it without undue complaint.

David Wickham

first printed in Chart News

www.chartnews.org



Limpsfield in Bloom Judging 2019



The WI did us proud with their upcycled flower pots, tea pots and other articles full of colours. And hopefully you have all tried sitting in the wonderful tree seat carved by Geoff Tozer?

We took the judges to the Forest trail and the Community Orchard with the children from Limpsfield school and then came down the village, admiring the troughs on both sides of the road as we went.

The trough that was smashed in the car accident has already been replaced by Barry and Chrissie Chandler thanks to donations from residents of the St Michael's flats and their friends, and we now have insurance money to replace the sign as well.

We stopped as always at the Memorial Stores for 'team' photo – improved by one of the judges shouting 'GOLD for Limpsfield' – though we have no idea if he meant it or not!! We find out in September.

The Upcycling festival in the church was a great success with some very ingenious items displayed by adults and children, including the splendid Messy Church display outside the church. The judges and helpers were given a glorious tea in the millennium room, and then the judges went to the allotments to judge them as part of the 'It's your neighbourhood' category,

The concert on the Saturday evening went very well with over 50 singers tak-

ing part in the Vivaldi Gloria. We had a big audience who took part in some of the Songs from the Shows in the second half. As part of the upcycling festival many of us made squares for a Limpsfield in Bloom quilt, which was beautifully put together by Helen Ireland and Nila Spiller. This was raffled at the concert and made over £400. We are delighted that with the raffle, tickets and refreshments we made over £1200. After expenses were deducted and a donation made to the church we still have £1000 for Limpsfield in Bloom. As we have no funding from other sources we are most grateful to people for donations and for supporting fund raising events.

Ann Osborn

Judging day on 12 July was lovely and sunny, much like the couple of weeks before it - which meant lots of watering. Our upcycling theme was a huge success thanks to the involvement of many people. The village was vibrant with its bright colours, and the three up-cycled troughs on the bank opposite the church were full of colour.

THE WOODHOUSE CENTRE

www.thewoodhousecentre.org.uk

Registered Charity No. 262608

TEL: 01883 715189

HOSKINS ROAD

(OPPOSITE THE LEISURE POOL)



AUTUMN FAIR

THURSDAY 14th NOVEMBER
10 a.m. - 12 noon

CAKES - COLLECTABLES - GIFTS - RAFFLE
JEWELLERY - BOOKS - FANCY GOODS
TEA AND COFFEE



Limpsfield Village W.I. were pleased to welcome Chelsea Pensioner Brian Cumming to our July meeting, who gave an insight into the lives of the Chelsea Pensioners at the Royal Hospital Chelsea, with film archives showing the variety of occasions they were invited to attend, including Wimbledon.

In their striking scarlet uniforms the Chelsea Pensioners are the iconic faces of the UK's veteran community. Some 300 army veterans live at the Royal Hospital today, their 325-year-old home in the heart of London.

Elaine Holloway



Oxted & Limpsfield Music Society New Programme Announced

Our readers will be familiar with St Peters unique musical connections. In its churchyard lie Frederick Delius, Sir Thomas Beecham, Beatrice Harrison, Jack Brymer, Eileen Joyce and Norman Del Mar. What you may not be aware of is the marvellous society that grew out of that musical tradition. The Oxted and Limpsfield Music Society will in October of this year be embarking on its 73rd year of presenting superb programmes of classical music and jazz to the area, now at the marvellous Bawtree Concert Hall, Hazelwood, Oxted.

Ever since its launch by Eileen Joyce in 1946 the Society has brought together performers of the highest international standing whose names read like a who's who of the music world. Those names are too many to list here but by way of flavour:-

- | | | |
|----------------------------------|-----------------|---|
| ♪ Benjamin Britten & Peter Pears | ♪ Andras Schiff | ♪ Pascal Roge |
| ♪ John Shirley-Quirke | ♪ Peter Donohoe | ♪ Imogen Cooper
(President of the Society) |
| ♪ John Lill | ♪ Barry Douglas | ♪ Roderick Williams |
| ♪ Moura Lympany | ♪ Nigel Kennedy | ♪ Stephen Hough |
| ♪ Amadeus String Quartet | ♪ Melvyn Tan | ♪ The Elias String Quartet |

The Society's new season starts on the 19th October 2019 with a recital by one of the country's most distinguished ensembles, the Endellion String quartet. It continues with a recital by the mezzo Soprano Anna Huntley, supported by the distinguished accompanist Graham Johnson OBE on 16th November, on 28th March 2020 a recital by the marvellous pianist Martin James Bartlett, an evening with Tasmin Little OBE on 28th March 2020 and finally a concert by the Con Forza String Quartet on 9th May 2020.

The Society is fortunate to be able to stage its concert programmes at the Bawtree Concert Hall a splendid new auditorium with a superb acoustic. More information together with ticketing information can be had at the Society's website www.oxtedandlimpsfieldmusicsociety.org.uk



These boots are made for walking and making the countryside more accessible

East Surrey Walkers don't just walk! We have a team – Ken's Krew – who go out into the local area and trim overgrown hedgerows, repair paths and stiles, and, when funds allow, replace old stiles with kissing gates. We have recently funded and installed two kissing gates to replace stiles at Broadham Green and another two in Lingfield. What are you waiting for? – come and join us – a friendly group that enjoys talking whilst walking in the countryside, making new friends and having pub lunches. We also enjoy various social events throughout the year and organ-

ise holidays together, both in the UK and abroad. Each week we offer a selection of walks for different abilities, ranging from 3 – 12 miles. There's bound to be one that suits you and you are welcome to walk with us on one or two occasions before you decide whether to join East Surrey Walkers. We'd love to have your company...

You can find more about this month's walks at www.eastsurreywalkers.org.uk or on page 44.

Pamela Cunniffe

The Barn Theatre



16th – 19th October
7.45pm

The Safari Party - The Oxted Players
A comedy by Tim Firth where three very different households share preparation of a three course meal with disastrous consequences

Tickets: £8-£10 from www.barntheatreoxted.co.uk or 01883 724852

26th October
7.45pm

Purple Zeppelin
The greatest gig that never was – until now! Deep Purple & Led Zeppelin on the same bill – Purple Zeppelin!

Tickets: £18 from www.barntheatreoxted.co.uk or 01959 561811

20th - 23rd November
2.30pm (Sat) & 7.45pm

Scrooge - Oxted Operatic Society
Scrooge: The Musical closely follows the plot of Charles Dickens' A Christmas Carol, in which the miserly Ebenezer Scrooge undergoes a profound experience of redemption over the course of a Christmas Eve night, after being visited by four very different ghosts

Tickets: £15.00 from www.barntheatreoxted.co.uk or 01883 331400

Information about all the above shows can be obtained from: www.barntheatreoxted.co.uk or 15a High Street, Westerham, Kent, TN16 1RA (01959 561811)



TANDRIDGE HANDICRAFT SOCIETY

The Society encourages crafts in the area. It meets every Monday 1.30-4.30pm at the Woodhouse Centre, Hoskins Road Car Park, by Tandridge Leisure Centre, Oxted RH8 9HT

Forthcoming talks include:

Monday 16/9/2019 2-4pm :**The Rehabilitative Power Of Stitch** focusing on Canvaswork in prisons, Fine Cell Work

Monday 14/10/2019 2-4pm : **Silks and Stitches** : Traditional Textiles of Thailand by Jennifer Hughes

Monday 18/11/2019 2-4pm : **Places and Spaces for Decoration** focusing on the Tent Makers of Cairo by John & Joan Fisher

Visitors are welcome to all talks, £5 entry includes tea and biscuits. Come and join us, we are always keen to welcome new members. Further details: contact Jenny Beal (Chairman) on 01883 620730

LIMPSFIELD DECORATIVE & FINE ARTS SOCIETY

LDFAS has a full programme of lectures, visits and study days. See theartsocietylimpsfield.org.uk

Upcoming visits and lectures:

- Sep 25th: Vita Sackville-West & Sissinghurst
- Oct 30th: Tantrums and Tiaras (Royal Opera Hse)
- Nov 27th: Rise and Fall of Napoleon Bonaparte
- Dec 18th: Santa Claus

All lectures at 2pm and 8pm in St Peter's Church Hall.



East Surrey Walkers

Some upcoming short walks:

- 5 Oct, 10am: East Croydon Station, 6.5 miles (leisurely)
- 6 Oct, 10am: Chiddingstone Causeway, 10 miles (moderate)
- 7 Oct, 10am: Edenbridge, 3.5 miles (easy)
- 8 Oct 10am: Oxted, 3.5 miles (strenuous)
- 9 Oct, 10am: Staffhurst Wood, 5 miles (leisurely)
- 11 Oct, 9:30am: Chiddingstone, 8.5 miles (moderate with a drink!)

For full details on joining East Surrey Walkers or 3 monthly programme of walks go to www.eastsurreywalkers.org.uk.

OXTED & LIMPSFIELD FLORAL DESIGN CLUB

Meetings, with demonstrations and competitions are held on the second Wednesday of each month at St Peter's Hall at 2.00 pm. Further details from Secretary Angie Street (angelastreet7@gmail.com) or Programme Secretary Liz Norman (anormandliz@googlemail.com).

Next events:

October 9th: OPEN MEETING

Steven McDonnell, a very special Flower Arrangement Demonstration: "A Backward Glance"

November 13th: Sachiko Pearce, A Flower Arrangement Demonstration: "Arabian Nights"

December 11th: Myra Lester, A mini Flower Arrangement Demonstration: "Christmas Treats" Christmas Competition, Party time!"

See www.olfs.org.uk for full information.

LIMPSFIELD, OXTED & DISTRICT HORTICULTURAL SOCIETY

LODHS, now called 'Come Grow with Us Club' meets on the first Wednesday of each month (except January and August) in the Red Cross Centre at 8pm. We welcome new members. Enquiries to **Malcolm Young** on **01883 730032** or myoung@film-buffs.com.

Go to lodhsgardens.blogspot.co.uk for further details

LIMPSFIELD VILLAGE WI

ST PETERS HALL, LIMPSFIELD HIGH STREET

Limpsfield Village WI meets on the first Wednesday of the month, normally at 2.30 pm. New members & guests are always welcome. Please contact Catherine Webber on 07879 338397 for further details and confirmation of meeting times.

Oxted & Limpsfield Choral Society

UNITED REFORMED CHURCH, BLUEHOUSE LANE, OXTED
Saturday, 7th December 2019, 7.00pm

CHRISTMAS CONCERT

Details to be confirmed

More: www.olcs.org.uk



Oxted & Limpsfield Music Society

The Oxted & Limpsfield Music Society brings music of the highest standard to the area, inviting world-renowned artists to perform but still being able to offer tickets at very reasonable prices. Everybody is welcome. Membership of the Society is not required and our concerts are open to all.

Forthcoming concerts:

- 19th Oct 2019:** the Endellion Quartet
- 16th Nov 2019:** Anna Huntley, Mezzo Soprano accompanied by Graham Johnson OBE
- 22nd Feb 2020:** Martin James Bartlett
- 28th March 2020:** an evening with Tasmin Little OBE
- 9th May 2020:** the Con Forza String Quintet

For full details of all the Society's concerts and how to buy tickets go to: www.oxtedandlimpsfieldmusic-society.org.uk or see more details on p46

OXTED & DISTRICT HISTORY SOCIETY

UNITED REFORMED CHURCH, BLUEHOUSE LANE
The Society meets fortnightly on Tuesdays at 8pm throughout the winter.

Upcoming talks include:

- 8 Oct: *Alamein with Stephen Bungay*
- 22 Oct: *The Ghosts of Hampton Court with Sarah Slater*
- 5 Nov: *The Kent Medieval Graffiti Survey with Alan Anstee*

Visitors will receive a warm welcome, and can attend for a small fee of £4 per visit. For information contact Trevor Burrage on 01883 716848 or see www.oxtedanddistricthistory-society.org.uk



www.hurstgreensingers.co.uk

Your local choral group - first formed in 1961 and still going strong today...

2nd November 2019

Come and Sing - Faure Requiem

You are invited to join the Hurst Green Singers at a Come and Sing of the Faure Requiem on Saturday 2 November 2019 at 14.00 in St John's church, Hurst Green. We will then perform the Requiem at 17.30. Cost is £15 per singer, £5 for audience. Contact: hurstgreensingers@gmail.com (see p50)

TANDRIDGE PHOTOGRAPHIC SOCIETY



TPS is a friendly and informal club with over 70 members, based in the village of Godstone in Surrey. We aim to help members expand and improve their photographic skills by sharing skills, ideas and inspiration.

Most meetings are held at the White Hart Barn in Godstone on Thursdays at 8pm during our September to May season. More: <http://tandridgephotographicsociety.org.uk>



Faure Requiem – A Come and Sing Performance

Come and join Hurst Green Singers to sing one of the most beautiful works in the choral repertoire on Saturday 2 November 2019 in St John's Church, Hurst Green.

Registration for singers starts at 13.30, rehearsal starts at 14.00 with a performance at 17.30. The cost is £15 per singer (£5 for students) and £5 for audience (tickets will be available on the door). To obtain more information or book your place in the choir, please email hurstgreensingers@gmail.com before 19 October.

All proceeds to the St John the Evangelist fundraising programme for the lighting system.
www.hurstgreensingers.co.uk

The Limpsfield Directory

Accommodation

- Abbeyfield..... 47

Antiques

- Steve Peacock - Furniture restoration..... 48

Barbers

- Wells Barbers..... 48

Bed & Breakfast

- Gibbs, Granville Road..... 48
- Meads..... 48

Builders

- Cameron - Building & Landscaping..... 49
- DB Refurbishment..... 49

Chauffeur

- Posh Kosh..... 50

Cleaning Services

- Crest Cleaning Services..... 50

- Window Cleaning - Robert..... 49

Days Out

- Skinners - Holidays & Short breaks..... 51
- Titsey Place..... 50

Decorating / Painting

- AC Building Services..... 52
- Brewers..... 52
- C&C Southern..... 53
- Paul the Painter..... 53

Electrical Work

- Matt Allen - Electrics..... 53

Engraving/Jewellery

- Sauverin Withers..... 52

Estate Agents

- Jackson, Stops & Staff..... 54

Event Management

- Daniel Lay..... 54

Funeral Services

- Alex Jones - Funeral Directors/Masons..... 55
- Ebutt Funeral Service..... 55

Garden/Property Management

- Chartfords Tree Surgeons..... 56
- David Waite - Property Maintenance..... 58
- First Post Fencing..... 56
- Greenwells Tree Surgeons..... 57

Groceries & Post Office

- Memorial Stores..... 58

Health

- Body control - Pilates (Tania)..... 59
- Chiropodist - Julie Reynolds..... 57
- Limpsfield Lawn Tennis Association..... 58

Home Installation

- Alarm Installation - Crozet..... 59
- Bunting Chimney Sweeps..... 59
- PAC Handyman Services..... 60
- TN16 Handyman Service..... 60

Interior Design

- Custom Interior Design by Morag..... 62
- Peter Snashfold Furnishings..... 60
- The Carpet Shop..... 61

Information Technology

- IT Problem - Scott Harris..... 62
- Mr Computing..... 63

Locksmith

- Lee's Locks..... 63

Member of Parliament

- Sam Gyimah..... 64

Motor Services

- Day's Garage..... 64

Pest Control

- KPN Wasp Nest Removal..... 65

Pet Services

- Paws for Fun..... 63

Plumbing

- H2O Plumbing..... 67

Restaurants

- Thai Pad..... 65

Schools

- Hazelwood..... 66

Solicitors

- Elgee Pinks LLC..... 66

Swimming Pool/Spa Maintenance

- Hills Sparkling Pools..... 67

Teaching/Tutoring

- Spanish/French lessons..... 68
- Swimeazy Swimming lessons..... 68

Venue Hire

- St. Peter's Church Hall..... 68

Start Here



For over 50 suppliers
of quality goods and
services

To add your advert here contact Joy or Paddy -
details on page 7



DAVID GRESHAM HOUSE 2 Oak Close, Hurst Green

- ✦ Excellent 24 hour residential care for up to 29 residents with full personal support (dressing, bathing etc.)
- ✦ Respite care
- ✦ 5 sheltered flats

To enquire about vacancies or offer your services as a volunteer contact

Pam Packham on **01883 715948**

Exempt Charity Reg. No. 23568R

ANTIQUUE FURNITURE RESTORATION

ALL ASPECTS OF
FURNITURE REPAIRS AND
POLISHING UNDERTAKEN
INCLUDING MODERN
FURNITURE

30 YEARS EXPERIENCE

FREE ADVICE AND
ESTIMATES GIVEN

CALL

STEVE PEACOCK
01883 743879



WELLS BARBERS

Est over 30 Years



MENS HAIR CUT **£9.50**

OAPS AND KIDS **£8.00**

No appointment necessary

Tel: 01883 716979

36b Station Road West, Oxted
OPPOSITE BARCLAYS BANK,
BEHIND JJ'S CHILDRENS WEAR

HOME VISITS BY ARRANGEMENT

Opening times: Mon-Weds 8.30-5.00

Fridays 8.30-6.00

Closed Sunday and Thursday



Cameron

Building and Landscaping Services Ltd

All aspects of general building / landscaping undertaken including:



extensions • kitchens • bathrooms • plumbing
tiling • plastering • flooring • patios • driveways
brickwork • fencing • paving • renovation
property maintenance • and much more.



Registered and fully insured - Tidy, friendly and reliable service

Free quotations and advice - Portfolio and references available



07855 894426 / 01883 715856

www.cameronservices.co.uk



Bed & Breakfast

Friendly, comfortable.

*Convenient for London, Gatwick;
walkers on the North Downs Way.*

Memorable breakfast!

£30-£45 single

£60-£75 twin/double

£55-£85 family

(en-suite or private bathroom)

58 Granville Road, Limpsfield,
Surrey, RH8 0BZ

0800-298-5732 or 01883-714104
david@arawa.co.uk

Mr & Mrs D.J.Gibbs

BED & BREAKFAST AT MEADS

*Tudor-style family home offering com-
fortable accommodation. Convenient
for town centre, Gatwick and the North
Downs Way.*

Twin bedded en-suite room - £98 per night

Double bedded en-suite room - £95 per night

Single occupancy of a double room - £75 per night

Flat no longer available to rent.

23 Granville Road, Oxted,
Surrey, RH8 0BX

01883 730115

e-mail: Holgate@meads9.fsnet.co.uk

Mrs Helen Holgate
www.bandbmeads.co.uk



LEE DUNN DB REFURBISHMENT

◆ Commercial

◆ Residential

◆ Professional

◆ Reliable

◆ Quality

lee@dbrefurbishment.co.uk

www.dbrefurbishment.co.uk

Tel: 07825 560617

WINDOW CLEANING

Traditional or reach-and-wash system used

I offer a reliable, efficient, polite
all-year-round service at fair prices

Established 1993

Also gutters,
conservatory roofs
and pvc cleaned

Please call

Robert

on

01342 892406

or **07973 307161**

References on request



POSH KOSH CHAUFFEUR



Life's a journey

Established in 1997 Recognising what people want, Experience, Punctuality, Reliability and Discretion. Pure Range Rover Vogue Luxury for all your transport needs, whether for Business or Pleasure. Start & End your holiday from

door to door, by letting us transfer you and your family to and from the Airport. Trips to London, Theatre, Glyndebourne, Horse Racing, Henley Regatta, Entertaining Clients, Red-Letter-Day for friends or relatives for a Memorable Experience and not forgetting that special Wedding Day.

poshkosh@me.com

07710 358308

Carpet & Upholstery Cleaning

- ⦿ Professional service
- ⦿ Excellent results
- ⦿ Domestic/Commercial
- ⦿ Carpets dry in just two hours!
- ⦿ Fully insured
- ⦿ Checkatrade Member

Free estimates and advice

Crest Cleaning Services

Tel: 020 3673 5244

Mobile: 07771 863 519

Titsey Place

OXTED, SURREY

HOUSE AND GARDENS OPEN ON SATURDAYS AND WEDNESDAYS, GARDENS ONLY ON SUNDAYS

Titsey Place, with its stunning garden, lakes, woodland walks, walled kitchen garden and park offering panoramic views, enchants visitors. After visiting the mansion house and grounds, why not relax in our tea room where light refreshments are available.

Open season: 15th May to 25th Sept 2019

House and gardens open: 1pm to 5pm every Wed and Sat.

Also end of May and Aug bank holidays. Guided tours of the house at 1.30, 2.30 and 3.30pm (limited 20 per tour)

Tea rooms open: Wed, Sat, Sun 12.30pm

Gardens only open: Every Sun 1pm to 5pm

NGS open days: 19th May, 16th June, 21st July, 18th August



Information Line: 07889 052461 www.titsey.org

Skinner's

DAY EXCURSIONS

Our day excursions programme (from local pick up points) includes trips to the seaside, to Sonning Mill dinner theatre, houses & gardens, airshows, boat trips, railways & much more...Here's a taste of what we've got coming up:

10th Sept	Osborne House
12th Sept	Romney, Hythe & Dymchurch Railway with fish & chip lunch
16th Sept	Eltham Palace & Thames River Cruise
18th Sept	Spinnaker Tower, Gunwharf Quays & D-Day Museum
22nd Sept	Dagenham Sunday Market
27th Sept	Canterbury Food & Drink Festival
28th Sept	Agatha Christie's Towards Zero at The Mill, Sonning
2nd Oct	Eastbourne
4th Oct	Dover Castle
8th Oct	Frogmore Paper Mill with boat trip & fish & chip lunch
10th Oct	Knitting & Stitching Show, Alexandra Palace
15th Oct	Windsor
18th Oct	Finders Keepers in Hythe
22nd Oct	Scenic drive with lunch at The Moorings, Pevensey
25th Oct	High Beeches Gardens
28th Oct	Autumn Tints Tour of the New Forest
30th Oct	The Ancient Villages of Heathrow
2nd Nov	Leeds Castle Fireworks Spectacular
5th Nov	The Beautiful Surrey Hills Guided Tour
11th Nov	Tutankhamun & the Roaring Twenties
14th Nov	Blenheim Palace & Living Crafts for Christmas
16th Nov	Run For Your Wife at The Mill, Sonning
21st Nov	Greyhound Racing, Brighton
23rd Nov	The Postal Museum, Mail Rail & Lunch
26th Nov	Eastbourne
28th Nov	Christmas at Kew
5th Dec	Bluewater Shopping Centre
7th Dec	Rochester Dickensian Christmas Extravaganza
10th Dec	Polhill Garden Centre
13th Dec	Tutankhamun & the Christmas Lights



☎ (01883) 713633



www.skinner's.travel
Email info@skinner's.travel
Barrow Green Road, Oxted RH8 0NJ

A C BUILDING SERVICES

CARPENTRY & DECORATING

- ✦ BESPOKE CUPBOARDS
- ✦ BATHROOMS
- ✦ KITCHENS
- ✦ DECKING

01883 717204
07850 791666



Sauvarin Withers

Engraver & Jeweller

- ✦ Jewellery & Silver repair
- ✦ Hand, Machine & Seal Engraving
- ✦ Wedding rings
- ✦ Signet rings
- ✦ Commission Work

Contact me on
07741 463283
dudleyjsw@btinternet.com



C & C

(Southern)



Property Services Ltd

Established in 1990, we have built a reputation for quality, reliability and value.

For all your decorating needs.

Call us for a free estimate and advice.

C&C House, Unit B 10 Beadles Lane, Oxted, Surrey RH8 9JJ

Tel or Fax: 01883 716657 Mobile: 07850 649329 / 0

Email: cc.southern@btconnect.com



Brewers DECORATOR CENTRES

Your choice for paint and wallpaper

and the very best in free advice

20% OFF YOUR FIRST PURCHASE
Pick up a Brewers Card in-store or register for one online

Over 170 stores nationwide. Visit your local branch in Redhill
OPEN TO THE TRADE AND PUBLIC SINCE 1904



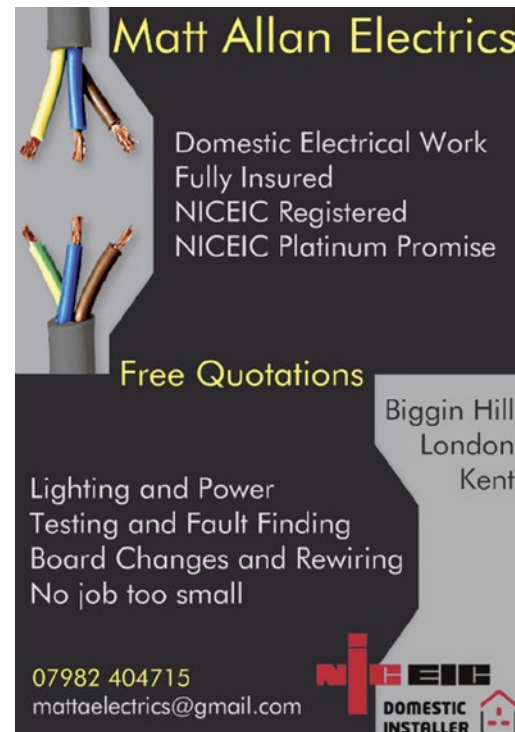
Paul the Painter

professional decorating

all preparation and repairs undertaken including filling, grouting and plastering

call for a free visit and quote

07466 887553
bogdan.thaiboxing@gmail.com



Matt Allan Electrics

Domestic Electrical Work
Fully Insured
NICEIC Registered
NICEIC Platinum Promise

Free Quotations

Lighting and Power
Testing and Fault Finding
Board Changes and Rewiring
No job too small

Biggin Hill
London
Kent

07982 404715
mattaelectrics@gmail.com

NICEIC DOMESTIC INSTALLER



JACKSON-STOPS
jackson-stops.co.uk

**YOUR PROPERTY SEEN
IN ALL THE RIGHT PLACES**

01883 712375 | oxted@jackson-stops.co.uk
17-19 Station Road West, Oxted RH8 9EE



TAILORMADE FUNERAL PLANS FROM

ALEX JONES
Independent Family Funeral Directors

One of the few remaining family-owned, truly independent funeral directors in the area

Peace of mind for you and your family

Specify your wishes in advance

Protection against rising funeral costs

A range of flexible payment options

Arrange the send off you want

Alex Jones Funeral Directors
1 East Grinstead Road
Lingfield, RH7 6EP
01342 832534
www.alexjonesfuneraldirectors.co.uk

We also have funeral homes in;

Forest Row: 01342 822399

Oxted: 01883 730383

Edenbridge: 01732 860047



**£40 M&S
vouchers
with every
plan**

PROUD TO OFFER
**Golden
Charter**



Daniel Lay
Event Services

Daniel Lay Event Services are a **professional party planning** and **event management** company. We can supply everything you require for an event or individual elements to make it happen. Some of our many services include:

- Professional DJ's Complete With State Of The Art Sound & Lighting
- Audio Visual Hire
- Furniture, Draping & Decoration Hire
- Mobile Bars, Bar, Cleanup & Event Staff
- Photo Booth, Selfie Booth & Magic Mirror Hire
- Venue Recommendations & Marquee Hire

plus much more

Tel: **0800 112 0808** Email: contact@daniellay.co.uk Web: www.daniellay.co.uk
Instagram/Facebook/Twitter: [@daniellayevents](https://www.instagram.com/daniellayevents)



FUNERAL DIRECTORS

A TRADITIONAL FUNERAL SERVICE FROM LOCAL FUNERAL DIRECTORS

- Telephone quotes available
- Memorial advice and products
- International repatriation specialists
- Pre-paid Funeral Plans

EBBUTT FUNERAL SERVICE

HIGH STREET, LIMPSFIELD, RH8 0DR

01883 713767

15 LIMPSFIELD ROAD, SANDERSTEAD, CR2 9LA

020 8916 0694

BC BAKER & SON

15-17 HIGH STREET, CATERHAM, CR3 5UE

A member of Dignity plc. A British company
www.dignityfunerals.co.uk
Members of the National Association of Funeral Directors

Chartfords Trees Ltd

Fully qualified and insured Tree Surgeons carrying out all aspects of tree work and maintenance.

Tree Removal & Felling **Hedge Trimming**

Pruning Work

Crown Lifting
Crown Reducing
Crown Thinning

Shrub Pruning

Stump Grinding

Tree Planting

Logs & Woodchip

Safety Work

Removal of Dead Wood
Emergency Call Out



Free no obligation quotations

t 01883 460 160

m 07752 987 318

e info@chartfordstrees.co.uk

w www.chartfordstrees.co.uk

Find and review us at www.checkatrade.com/ChartfordsTreesLtd/



Find us in
Checkatrade.com



**GREENWELLS
TREE SURGEONS**



Carrying out all aspects of professional tree surgery/hedgecutting, garden/woodland clearance and maintenance, planting schemes.

- ✓ Your local tree surgeons
- ✓ Friendly and reliable service
- ✓ No job too small
- ✓ NPTC Qualified
- ✓ Emergency Call-out
- ✓ Full public liability insurance

Seasoned logs and woodchip mulch for sale.



Free Quotations



OUR SERVICES

- Pruning
- Reshaping
- Tree removal
- Hedge cutting
- Grass cutting
- Thinning
- Deadwooding
- Safety inspections
- Stump grinding
- Hedging
- Tree/shrub planting

Stuart mob: 07545 580692 - Office: 01959 561101

info@greenwellstreesurgeons.co.uk

www.greenwellstreesurgeons.co.uk

Find us on [f/GreenwellsTreeSurgeons](https://www.facebook.com/GreenwellsTreeSurgeons) [yell.com](https://www.yell.com)



FIRST POST FENCING
A WINNING TEAM

A highly experienced fencing contractor based locally, in Oxted. First Post Fencing carries out contracts throughout Kent, Sussex and Surrey.

Complete Domestic Fencing Specialists

Including

- Estate & Boundary
- Equestrian & Livestock
- Repairs
- Agricultural

Whether you require a small fence repair or a larger installation we are happy to provide a free, no obligation, competitive quote. Please call or drop us an email.

Tel: 01883 717 942

Mob: 07795 455 667

Website: www.firstpostfencing.co.uk

Email: enquiries@firstpostfencing.co.uk

CHIROPODIST

Julie A Reynolds MSSCh. MBChA.
HCPC Registered

Ingle Dale Therapy Centre

1 Tanhouse Road

Old Oxted

Surrey RH8 9PE

Appointments 07766 141179

The Limpsfield Club

TENNIS | SQUASH | RACKETBALL | BADMINTON | TABLE TENNIS | GYM-LITE | BAR



SERIOUS ABOUT SPORT: GREAT FOR FAMILIES & FRIENDS

- 16 Tennis Courts (7 Floodlit) & Mini Tennis Court & Wall.
- 6 Squash & Racketball Courts (Heated & Cooled).
- Badminton Hall & separate Sports Hall for Table Tennis.
- Gym with the latest machine with 'Virtual Reality' programmes.
- Comprehensive Professional Coaching for all sports.
- Adults & Juniors welcome at competitive rates.

Web: www.limpsfieldtennis.co.uk Email: manager@limpsfieldtennis.co.uk
 Limpsfield LTC, Detillens Lane, Limpsfield, Surrey RH8 0DH Tel. 01883 714079

BODY CONTROL PILATES

Matwork Classes & Pilates for Rotational Sports

At Limpsfield Tennis Club

1:1 Reformer Programmes

Contact:

Tania Turner
07793 908442
01883 330689

BODY CONTROL
 PILATES®

Bunting Chimney Sweeps Chimney Services

- Sweeping Certificate Issued
- Fully Insured
- Competitive Prices
- Bird Guards Supplied/Fitted

Call Gary on mobile:

07906 211123
 or **01959 571491**

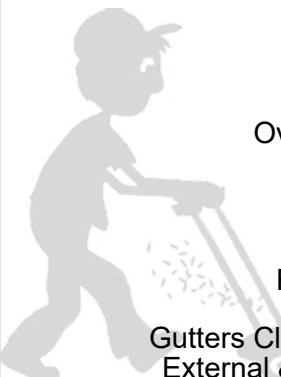
Email: garybunting@talktalk.net
www.buntingchimneysweeps.wordpress.com



David Waite Property Maintenance

Private & Commercial

Tel: 01959 541083
 Mobile: 07949 307906



- Grass Mowed
- Tree Work
- Hedges Cut
- Turfing
- Overgrown Gardens
- Winter Tidy Ups
- Snow cleared
- Patios
- Sheds Erected
- Fencing & Repairs
- Brickwork Repairs
- Gutters Cleaned & Repaired
- External & Internal Painting

Fully insured

Limpsfield Memorial Stores

Post Office & fresh local produce, bread, groceries, newspapers and a warm welcome!

Monday – Friday 7.30am to 5.30pm
 (Post Office is shut 1.00-2.00pm)
 Saturday – 8.00am to 12.30pm
 Sunday – 8.00am – 12.00pm
 (Post Office is shut on Sunday)

Tel: 01883 713306
www.limpsfieldstores.co.uk

CROZET

Crozet Alarms

- ◆ Intruder Alarms carefully installed
- ◆ Police / Fire Connection via Monitoring Station
- ◆ Existing Systems Upgraded
- ◆ Maintenance Contracts and Repairs
- ◆ Closed Circuit Television and Recording
- ◆ Door Entry Systems
- ◆ SSAIB / UKAS Approved

We have traded locally for 29 years
Call us for a FREE survey and quotation on
01883 723458

Or Email: sales@crozet.co.uk

TN16 Handyman

Property Maintenance



- Gardening Maintenance
- Painting & Decorating
- Home Repairs
- Property Maintenance
- Landscape Gardening

Free Quotations
Based in Westerham
24/7 Emergency Callout

Phone Harold: 074754 38788
tn16handyman@hotmail.com
www.tn16handyman.com

Free
estimates
& fully
insured

 **PAC handyman
services**

PAC Handyman Services is your local solution to everyday building, maintenance and installation projects within the home and garden.



T: 01342 843348 | 07711 939370
pac-handyman.co.uk



Peter Snashold
Furnishings

Upholstery • Curtains • Blinds

Unit 1C
Warren Farm Stables
Main Road
Sundridge
Sevenoaks, Kent
TN14 6EE

07715 206656
petersnasholdfurnishings
@hotmail.com

THE CARPET SHOP

BEAUTIFUL
FLOORINGS

- ♦ Carpet
- ♦ Vinyl
- ♦ Laminate
- ♦ Luxury Vinyl (Amtico and Karndean)

Your local, family run flooring solution centre, under the proprietorship of Hulya and Volkan for 17 years.

137 Station Road East, Oxted, RH8 0QE

Call 01883 818659

oxtedcarpetshop.co.uk - Email: oxtedcarpetshop@hotmail.com

Custom Interiors by *Morag*

- **Handmade curtains and blinds** to the highest quality finish
- **Designer cushions and throws** to complement and lift your existing scheme
- Help with your fabric selection and a **full interior design service** to give you a look you'll love
- Traditional upholstery
- Full and part **project management** for house renovations, extensions and room updates



Tel No. 01883 722283
Mobile 0777 394 0422
www.morag-interiors.co.uk

Chardleigh Cottage, Paines Hill, Limpsfield, Surrey, RH8 0RG

MR Computing



NO FIX NO FEE & NO CALL OUT CHARGE

- Local mobile home computer support, repair and maintenance. We come to you.
- Business support (onsite and remote), networks, installation & regular checkups.
- DELL Computers/Laptops supplied & setup. DELL performance, reliability, value & warranty with MR Computing service.
- Home office networking.
- Internet connection (wired and wireless).
- Share internet access with multiple PCs.



Call Mark & Sue on **01883 730345**
www.mrcomputing.net



Computer Problem?

- For home or business.
- Problem solving for Windows, email, viruses, internet connection, broadband and other computer related issues.
- Data and registry recovery. Backup solutions.
- Simple and professional advice given on all aspects of personal computing, including purchasing, upgrading and maintenance.
- Computer lessons (Windows, Internet, Microsoft Office...).
- Networking: secure wireless, dLAN, LAN, WAN, Active Directory.
- Bespoke software and website development (e-commerce).

Microsoft
CERTIFIED
Professional

Scott Harris
BSc Computer Science
Hons, MCP, MCAD

Microsoft
CERTIFIED
Application Developer

Telephone: **01732 361234**
Mobile: **07779 285839**
Email: **scott@MyITWizard.co.uk**

LEE'S LOCKS

No call-out charge!



24
hour
EMERGENCY
Locksmith

All locks fitted to insurance BS3621 ·

Window locks supplied and fitted · Fully Guaranteed · O.A.P. Discounts
Insurance Work · UPVC Specialist

* Digital locks
* Break ins

* Garage Door
* UPVC/Patio

* Police Checked
* No VAT!!!

Locked out? Door jammed? Lost keys? Need extra security?
Store this number in your phone NOW! You may need it.



Tel: **01883 840 042**
Mob: **07921 068564**

Email: lee@lees-locks.co.uk



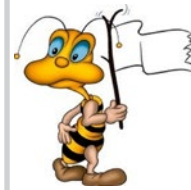
Find us in
Checkatrade.com

CONTACT YOUR MP

Sam Gyimah



- ✉ Sam Gyimah MP,
House of Commons, London SW1A 0AA
- t: 020 7219 3504
- w: samgyimah.com
- e: sam@samgyimah.com
- 🐦 @SamGyimah
- f fb.com/GyimahforEastSurrey



NICKS WASP NEST REMOVAL

www.waspnestsdestroyed.com

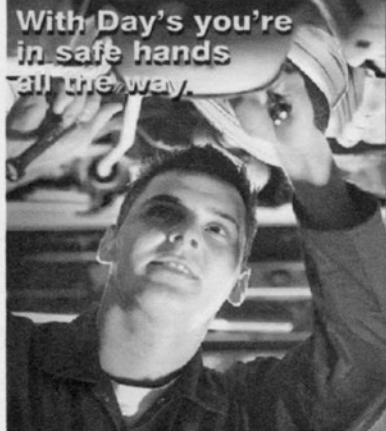
WASP NESTS DESTROYED

Cheaply and Efficiently



24a Station Road West,
Oxted

Phone Nick : 07761 232470



With Day's you're
in safe hands
all the way.

Your local one stop car repairers



- Services & Repairs
(all makes)
- Bodywork/ Car
Sales
- Delivery &
Collection Locally
- Tyres & Batteries
fitted free

DAYSGARAGE

Serving the community since 1957

Unit 6, Gardiner Business Park Little Browns Lane, Edenbridge
Kent TN8 6LH 01732 866544

Ivy Park, Ivy Mill Lane, Godstone Surrey RH9 8NE 01883 742822

17 Hurst Green Road, Oxted Surrey RH8 9BS 01883 730058

www.daysgarage.co.uk



**while
you
wait!**



thai pad

Thai Tapas Bar & Restaurant

**Lunch set menu
from £7.25**

**Sunday 2 course
set menu £11.95**

5-6 Hoskins Walk, Oxted, RH8 9HR

CALL: 01883 717190

EMAIL: contact@thaipadoxted.co.uk

WEB: www.thaipadoxted.co.uk





Hazelwood School

The alphabest of Ha-zelwood

- algebra and arithmetic
- breakfast club
- computing and coding
- design technology
- experiments and explosions
- forest schools
- gifted and talented

www.hazelwoodschool.co.uk. Contact Nick Tappin on 01883 733841

Hills Sparkling Pools

Local swimming pool (and spa) care service

- Spring Start up
- Winter shut down
- Routine service
- Green pool recovery!
- Chemicals, pumps, heat pumps, covers etc.

Phil Davies Bsc. (Eng)

phil@hillsparklingpools.uk
The Lodge, Itchingwood Common Rd,
Limpsfield, Surrey, RH8 0RJ

07947 313355

01883 500848

www.hillsparklingpools.uk

elgee|PINKS LLP

Specialising in all aspects of Property, Wills, Probate and Trusts

Westerham Office:
Wolfelands,
High Street,
Westerham,
Kent,
TN16 1RQ
t: 01959 568100
info@elgeepinks.com

Reigate Office:
Priory House,
45-51 High Street,
Reigate,
Surrey,
RH2 9AE
t: 01737 247554
www.elgeepinks.com

Paws For Fun

- 🐾 Dog Walking
- 🐾 Home Visits
- 🐾 Pet Taxi Service

Call Karen on
07379 206480

Your dog could be having fun with us while you are busy at work or out for the day!

H₂O PLUMBING

General Plumbing
Services, Alterations &
Bathroom
Installations

No job too small
City & Guilds Trained

Call Richard on
01883 712523
or **07876 450420**

READY FOR HOLIDAYS?

SPANISH and FRENCH language tuition

- ✂ One to one £10.00 an hour,
- ✂ small groups (3 or less) £25.00/3h
- ✂ Including free lunch for small groups
- ✂ Spanish Football lessons for kids too ! £7 hour

Eduardo/Christopher
07814 439947

Email address: georgieboy12@ymail.com

HAVE FUN LEARNING!



Small Swimming Classes for Children (3-16)

After school at:
Limpsfield Grange Pool - **Wednesdays**
Moorhouse School Pool - **Fridays**

Contact

Hayley Chilcott
07711 501854

thechillcotts@btinternet.com
Find Swimeazy on Facebook



Musical Memories - Limpsfield

Want to join a fun and stimulating singing group?

Designed for anyone who enjoys singing, including those with dementia and their carers. You can be sure of a warm welcome, plenty of singing, delicious cake and a good cup of tea!

Where:

St Peter's Church, Millennium Room
High Street, Limpsfield RH8 0DR

2019 dates

Second Thursday of every month, 10.30am-12pm

- 13 June
- 11 July
- 8 Aug
- 12 Sept
- 10 Oct
- 14 Nov
- 12 Dec

£2 PER PERSON

Carers go FREE
Refreshments provided

Lifts available! For more information please contact:

Caroline in the Limpsfield Parish Office - 01883 712512 /
stpeterschurch.lttm@gmail.com

St Peter's Church Hall and Glebe Room

High Street, Limpsfield, RH8 0DG

For regular or occasional hire



Car parking
Disabled access



Large hall with stage
Well-equipped kitchen with hatch to Hall and Glebe Room
Entrance hallway and W.Cs



Smaller Glebe Room
Can be booked separately when main hall is in use



For availability and costs, please contact Pat Davies - 01883 716487 or email stphlimpsfield@gmail.com. Visit www.stpeterslimpsfield for more details.



and Sports
Club★

Second Sunday of every month
3.30-5.30pm in St Peter's Church and
Millennium Room

Come and enjoy an afternoon of crafts, activities,
celebration and sport* followed by a meal

2019 dates

- 8 September New Beginnings
- 13 October The True Vine (Harvest)
- 10 November The Light of the World
- 8 December Christmas



A fun way for families to do church together.
All ages welcome!



St Peter's
Parish Church
LIMPSFIELD

* selected dates only. For more information contact Caroline:
stpeterschurch.lttm@gmail.com / 01883 712512