

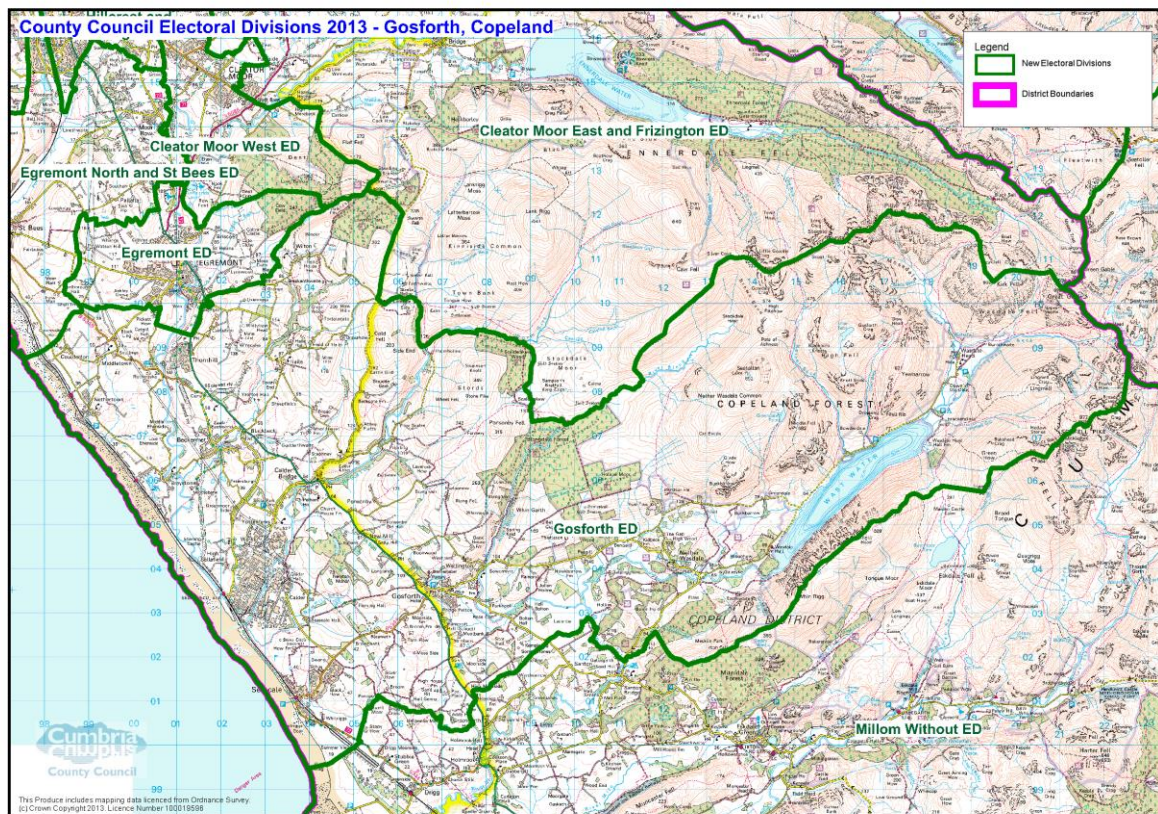
# Gosforth

## Electoral Division Profile 2015

## Overview of Electoral Division

Gosforth Electoral Division incorporates two larger service centre villages of Gosforth and Seascale along with a number of smaller villages and hamlets which have active Parish Councils, and a number of shops, services and amenities. Part of the ward falls within the Lake District National Park boundary. This division includes the main employer for the borough, Sellafield Ltd.

## Map



<http://www.cumbria.gov.uk/Election2013/maps.asp>

## Communities

The Gosforth electoral division comprises:

- Beckermeth
- Calderbridge
- Gosforth
- Haile & Wilton
- Ponsonby
- Seascale
- Sellafield
- Thornhill
- Wasdale
- Wellington

## Statistical Profile

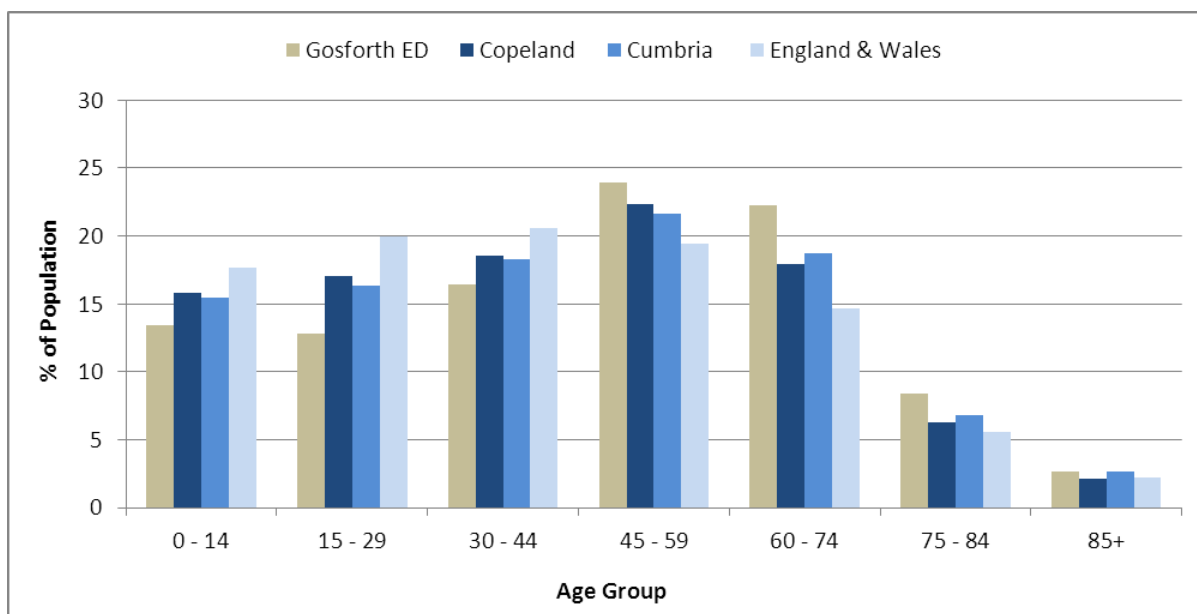
The 2011 Census estimated that the population of **Gosforth Electoral Division (ED)** was **6174** persons.

The table below presents estimated numbers of residents in **Gosforth ED** by age group:

	No. Persons by Age Group (Years)							
	All Ages	0 - 14	15 - 29	30 - 44	45 - 59	60 - 74	75 - 84	85+
<i>Gosforth ED</i>	6174	831	793	1013	1477	1374	520	166

*Source: Office for National Statistics, 2011 Census*

The chart below compares the proportion of **Gosforth ED's** population within each age group with the proportion of the population within each age group across Copeland district, Cumbria and England & Wales:



Source: Office for National Statistics, 2011 Census

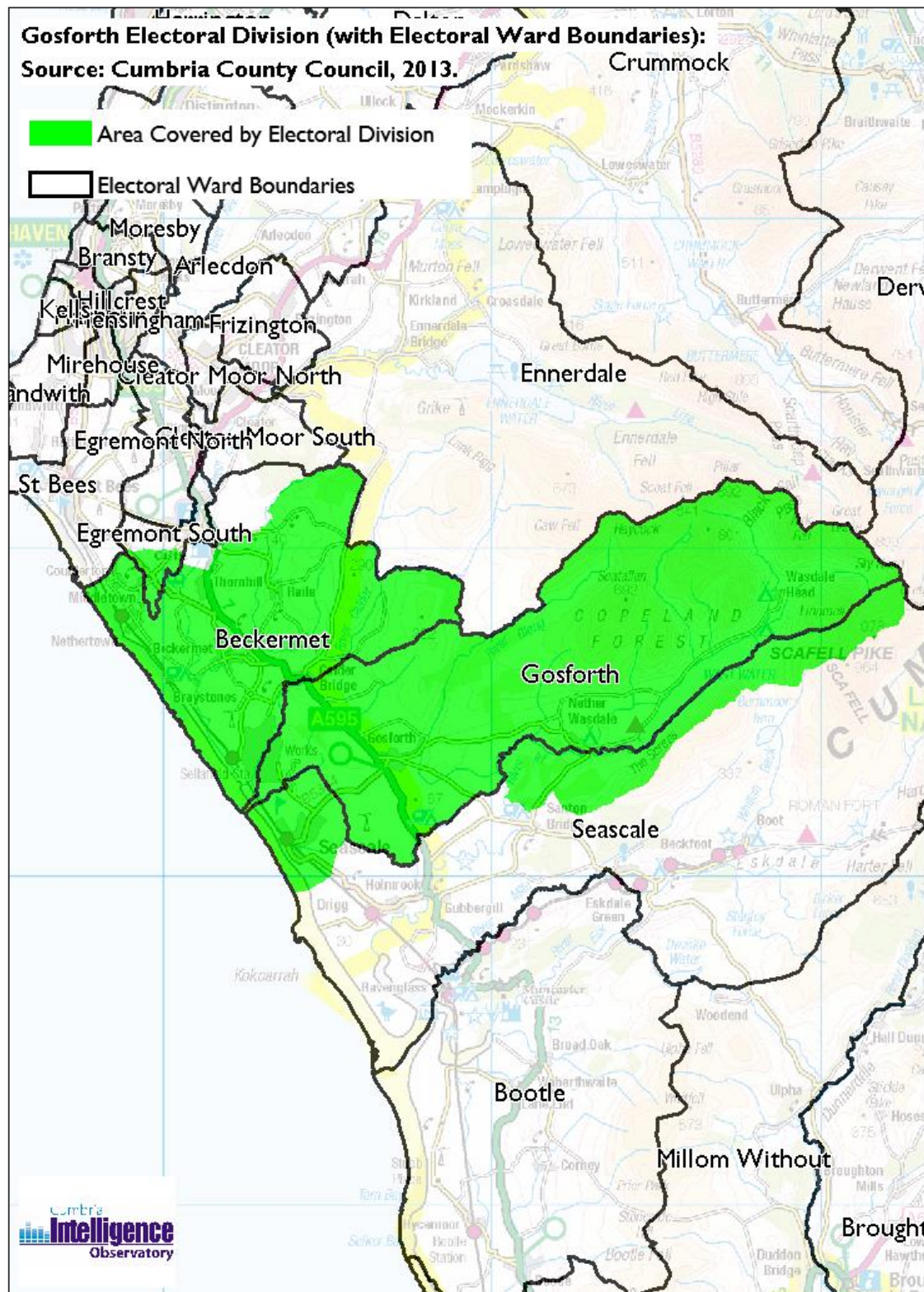
County Council Electoral Divisions cover large spatial areas and so division averages can mask variation between communities within the division. Furthermore, beyond Census data, there is little statistical information available for Electoral Divisions. However, most statistical agencies produce data for Electoral Wards. Therefore, there is a very wide range of statistical information available for Electoral Wards. Furthermore, as Electoral Wards are generally smaller than Electoral Divisions, statistics at this level provide more insight into variations between communities.

The table below identifies which Electoral Wards are fully or partially within the boundaries of **Gosforth ED**, and what proportion of **Gosforth ED**'s population live within each ward:

Electoral Division	Wards in Electoral Division	% of Electoral Division's Population that fall within the Ward
Gosforth ED	Beckemet	47.7
Gosforth ED	Egremont South	0.8
Gosforth ED	Gosforth	22.7
Gosforth ED	Seascale	28.8

Source: Cumbria Intelligence Observatory, 2013

The map below overlays Electoral Ward boundaries on to Gosforth ED's boundary:



(c) Crown Copyright and Database Right, 2013 Ordnance Survey Licence Number 100019596

The Cumbria Intelligence Observatory presents many Electoral Ward level statistics via the interactive 'Cumbria Atlas' tool. The Statistics provided within the Cumbria Atlas cover topics such as, but not limited to, population, housing, health, economy, poverty, ethnicity, language, and transport. The datasets within the Cumbria Atlas are regularly updated and expanded.

For simple step by step instructions to use the Cumbria Atlas to explore statistics for the wards within your Electoral Division, please visit the following web page:

<http://www.cumbria.gov.uk/eLibrary/view.asp?ID=56017>

The Information and Intelligence Team within Cumbria County Council are happy to talk you through using the Cumbria Atlas over the phone, or face to face. Training sessions can also be arranged for small groups.

To contact the team please call 01228 226309, or email

[info@cumbriaobservatory.org.uk](mailto:info@cumbriaobservatory.org.uk)

## **Parks, Open Spaces and Leisure Facilities**

Gosforth Electoral Division is a very rural area with many open spaces for walking, cycling and running, part of the area lies within the Lake District National Park including England's highest mountain Scafell Pike which can be climbed from Wasdale Head and Wastwater the deepest of all the lakes and named Britain's favourite view. Coastal access is also great, with many public beaches, Coulderton, Middletown, Nethertown, Braystones and Seascale are all coastal destinations along the West Cumbria coast.

There are play areas in a number of places including Beckermeth, Thornhill and Seascale; many of the villages have village greens or common land.

There are also a number of leisure facilities and sports clubs, including:

- Blengdale Runners Athletic Club
- Gosforth Angling Association
- Gosforth Cricket Club
- Gosforth Short Mat Indoor Bowls Club
- Seascale Badminton Club
- Seascale BMX Track
- Seascale Bowling Club
- Seascale Community Fitness Centre
- Seascale Cricket Club
- Seascale Golf Club
- Seascale Sports Hall
- Windscale Squash & Fitness Club

Many of the village halls also provide sports clubs and groups such as indoor bowls, badminton, and table tennis.

## Active Community Organisations

- Beckermeth Village Association
- Gosforth Amateur Dramatic Society
- Gosforth and District Art Society
- Gosforth Library and Friends of the Library
- Open Mind West Lakes U3A
- Seascale Art Group
- Seascale & Gosforth Beavers, Cubs, Scouts, Rainbows, Brownies, Guides, and Rangers
- Seascale Knitting Group
- Seascale Women's Outlook
- Shackles Off
- Thornhill Residents Association
- Wasdale Mountain Rescue
- West Lakes U3A
- WI
- Parish Councils – Beckermeth with Thornhill, Gosforth, Haile & Wilton, Ponsonby, Seascale & Wasdale Parish meeting

## Key Communication Networks

### Whitehaven News

A weekly broadsheet newspaper for the local area of Whitehaven produced by CN Group, distributed on a Thursday <http://www.whitehavennews.co.uk>

### News and Star

A daily evening newspaper for the local area of West Cumbria produced by CN Group <http://www.newsandstar.co.uk>

Tethera – Magazine linking the 3 parishes of Drigg, Gosforth and Seascale which is distributed to all homes and businesses in the three villages.

### National Trust

<http://www.nationaltrust.org.uk/wasdale/visitor-information/>

### Lake District National Park Authority

<http://www.lakedistrict.gov.uk/>

### Sellafield Ltd

<http://www.sellafieldsites.com/>

Most parish councils, churches and schools also have newsletters/websites.

## Community Assets

### Beckermet

- Beckermet CofE Primary School
- Beckermet Nursery
- Beckermet Reading Rooms
- St John's CofE, Beckermet

### Calderbridge

- Calderbridge Village Hall
- St Bridget's CofE, Calderbridge

### Gosforth

- Gosforth Nursery and Out of School Club
- Gosforth CE Primary School
- Gosforth Methodist Church & Hall
- Gosforth Public Hall
- St Mary's CofE, Church & Hall

### Haile

- Haile Parish Church
- Haile Village Hall

### Seascale

- Seascale Bowling Club
- St Cuthbert's CofE, Church & Hall
- Seascale Fire Station
- Seascale Health Centre
- Seascale Library
- Seascale Methodist Church & Hall
- Seascale Primary School
- Seascale Railway Station
- Seascale Sports Hall
- Shackles Off Young Peoples Centre
- St Joseph's RC, Seascale
- Windscale Club

### Thornhill

- Thornhill Primary School
- Thornhill Social Club



## Wasdale

- Nether Wasdale Church
- Old School Community Hall, Nether Wasdale
- St Olaf's Church, Wasdale Head
- Wasdale Hall Youth Hostel

## Local Cumbria County Council Service Hubs

Electoral Division	Gosforth ED
LA Care Homes	0
Non LA Care Homes	2
Extra Care Housing	0
Primary Schools	4
Secondary Schools	0
Adult Education Centres	0
Childrens Centres	0
Family Centres	0
Cumbria Outdoors	0
Hospitals	0
Doctors Surgeries	1
Libraries	3
Book Drops	0
Archives Centres	0
Registration Offices	0
Local Links	0
Community Development Centres	0
Credit Unions	0
CCC Grant Funded or Directly Operated Swimming Pools	0
Highways Depots	0
Fleet Workshops	0
Waste Treatment Plants	0
Household Waste Recycling Centres	0
Fire Stations	1
<b>TOTAL</b>	<b>11</b>

County council services are provided from:

- Gosforth, Seascale and Thornhill Libraries
- Seascale Fire Station

## Community Engagement

The Gosforth ward is part of the Mid Copeland Neighbourhood Forum area which meets on an ad hoc basis. To find out more about the next Forum please contact Copeland Area Support Team on 01946 505020.

### Key Community Contacts

**Norman Clarkson, Councillor for Gosforth, Cumbria County Council**

Address: Calder Park, Calderbridge, Seascale, CA20 1DN

Phone: 01946 841126

**Cumbria County Council - Copeland Area Support Team**

Address: Cleator Moor Council Centre, The Square, Cleator Moor, CA25 5AP

Phone: 01946 505020

Email: [gillian.elliott@cumbria.gov.uk](mailto:gillian.elliott@cumbria.gov.uk)

Web: [www.cumbria.gov.uk](http://www.cumbria.gov.uk)

**Copeland Borough Council**

Address: Catherine Street, Whitehaven, CA28 7SJ

Phone: 0845 054 8600

Email: [info@copeland.gov.uk](mailto:info@copeland.gov.uk)

Web: [www.copeland.gov.uk](http://www.copeland.gov.uk)

**Beckermet with Thornhill Parish Council**

Clerk: Mrs Sian Tucker

Address: 3 Wilton Mews, Wilton, Egremont, CA22 2PJ

Phone: 01946 820607

Email: [s.tucker3@btinternet.com](mailto:s.tucker3@btinternet.com)

**Gosforth Parish Council**

Clerk: Mr D Polhill, Combe End, Drigg, CA19 1XG

Phone: 019467 24327

Email: [d.polhill@btinternet.com](mailto:d.polhill@btinternet.com)

**Haile & Wilton Parish Council**

Clerk: Mrs A L Fowler

Address: Winder Lea, Wilton, Egremont, CA22 2PJ

Phone: 01946 824332

Email: [winderlea@btinternet.com](mailto:winderlea@btinternet.com)

**Ponsonby Parish Council**

Clerk: Mr D Polhill – details listed above under Gosforth Parish Council

**Seascale Parish Council**

Clerk: Mr I Turner

Address: 19 Mid Street, Whitehaven, CA28 9AZ

Phone: 01946 430887

Email: [ian-turner@fsmail.net](mailto:ian-turner@fsmail.net)

**Wasdale Parish Meeting**

Clerk: Mr D Killick

Address: Old Strands Cottage, Wasdale, Seascale, CA20 1ET

Phone: 019467 26258

Email: [killick.wasdale@btinternet.com](mailto:killick.wasdale@btinternet.com)