

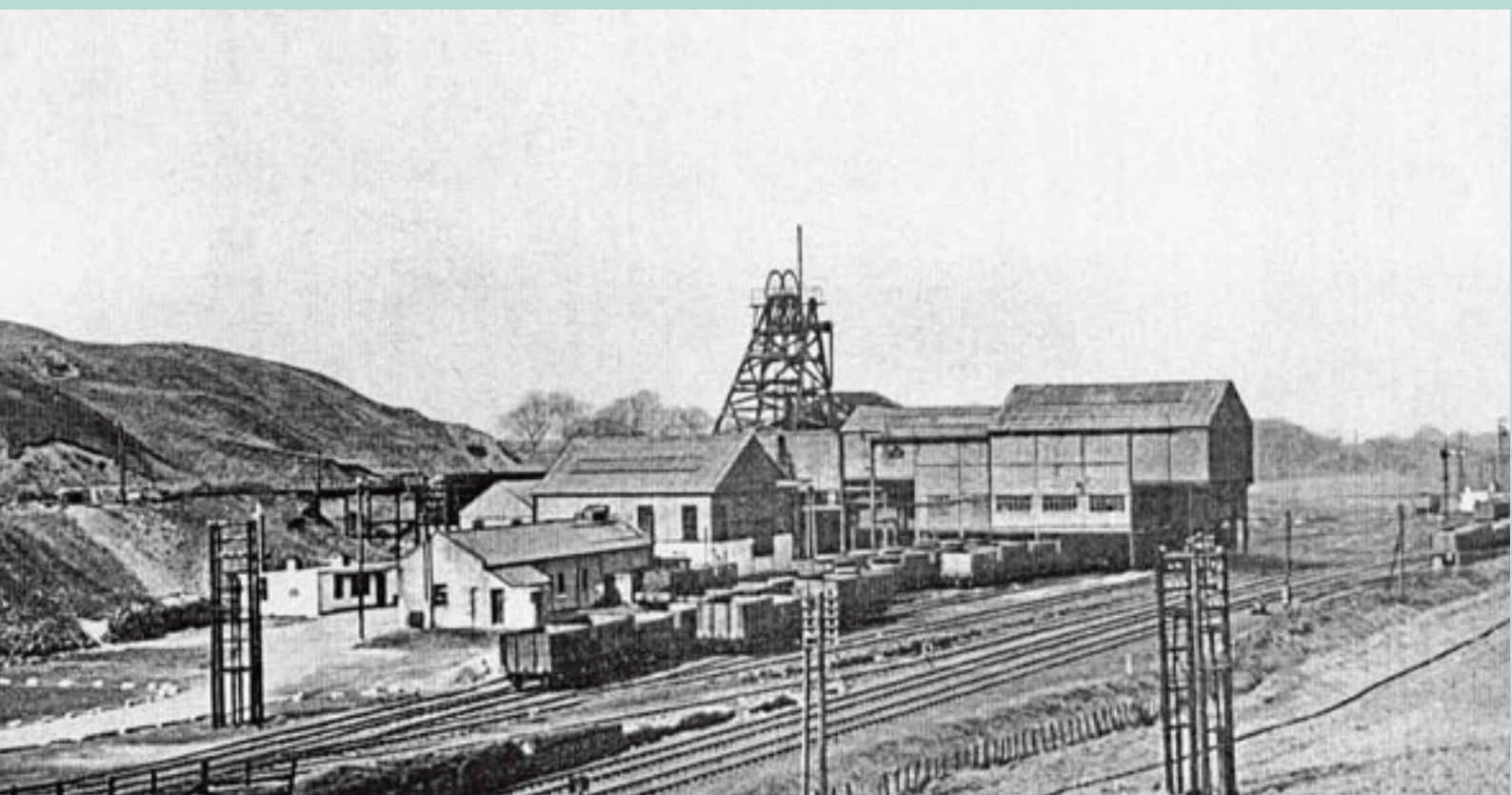


# LUMPHINNANS COMMUNITY ACTION PLAN 2018 - 2023



# Contents:

Introduction	3
Our Community Now	4-5
From our kids perspective	6
Our shared vision for our community	7
Our Likes	8
Our Dislikes	9
Themes and Priorities for Action:	
Theme1: Community Facilities/Activities	10
Theme 2: Environment	11
Theme 3: Roads and Parking	12
Theme 4: Economy	13
Making the links to Community Planning	14
Making it happen	14
Early Actions funded through the Participatory Budget	15



# Introduction

**101** Community Household Surveys were returned representing the views of approximately 250 people

**5** Stakeholder interviews took place with local people, groups, businesses and support organisations

**210** people attended the Community Futures Voting Event.

## Coalfields Community Futures

The Coalfields Community Futures Programme is an approach to local community planning and sustainable community development that aims to encourage active citizenship and build local democracy. It enables communities to devise a community action plan which makes a case for the things that the community thinks are important and wishes to make happen.

The process builds on existing processes of community action research to identify local needs and priorities, using residents as co-researchers. We work with local residents and groups to develop a common sense of purpose and assist them to produce a deliverable community action plan.

To support the action planning process the community receive a Participatory Budget which is available to local constituted community or voluntary groups.

This budget enables the community to fund small projects that are identified by the community through the results of the household surveys, stakeholder interviews and the Community Open Event.

## Lumphinnans Community Action Plan

The Action Plan summarises community views and information about:

- Our community now
- Our shared Vision for Lumphinnans
- Priority Themes and Actions

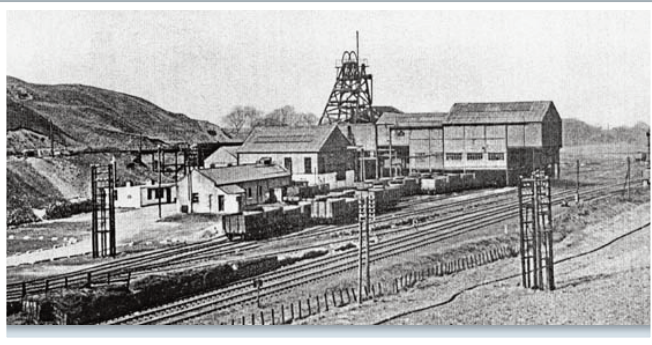
## Lumphinnans Community Futures Steering Group

The Steering Group brought together representatives from Lumphinnans Community Council, Lumphinnans Social Group, Lumphinnans Primary School PTA, Lumphinnans Bowling Club and members of the community.

Thank you to everyone who took part in helping Lumphinnans plan for a bright future.

# Our Community Now

## Location



Lumphinnans (Scottish Gaelic: Lann Fhìonain) is a small village, placed between the larger towns of Cowdenbeath and Lochgelly in central Fife. It is a small community, consisting of no more than half a dozen streets.

## Population

Based on 2014 mid-year estimates, the population of Lumphinnans is estimated at 770. There has been a decline in the population of 2% since 2001.

Lumphinnans has a higher percentage of children aged between 0-15 (19.7%) than Fife as a whole (17.7%) and also than Scotland (17.4%).

## Housing



In 2011 there were 419 households in Lumphinnans. 35.3% of houses are owner occupied, compared to 69% in the rest of Fife. 48.9% of homes are social rented by Fife Council. 10.5% are provided by other social landlords.

## Health

There are no Health Care facilities in the village and residents have to travel to Cowdenbeath for Doctor, Dentist and chemist.

Nearest Hospital is Victoria Hospital, Kirkcaldy and Queen Margaret, Dunfermline (outpatients only).

## Employment and the Economy

62.1% of the population of Lumphinnans are economically active, with 37.9% inactive.

There is only one shop in the village.

## Education and Training



There is one primary school in the village which also has a nurse class. The primary school has community use in the evenings. The nearest Roman Catholic School is St Bride's Primary School, Cowdenbeath. The nearest High Schools are in Cowdenbeath and Dunfermline.

Fife College has a campus in nearby Dunfermline. The Primary School have an active Parent Council who work on various projects for the benefit of the pupils and community as a whole. It also has an After School Club which is run by a dedicated committee.

The % of households where no one aged 16-74 has qualifications is significantly higher than Scotland as a whole, with Lumphinnans figures 41.9% and Scotland at almost 27%.

# Our Community Now

## Social and Community

Lumphinnans has a Community Council that has been established for a number of years.

**Lumphinnans Social Group** fundraise and hold an annual summer event for the whole of the community.

**Lumphinnans United AFC** - Formed in 1987. Lumphinnans AFC play in the Kingdom Caledonian Amateur League, Fife.

**Lumphinnans Bowling Club** are active in the community and encourage young people to play, they also participate in the local schools Be Bowl programme.

**The Lumphinnans Sports Hub** comprises of a Full Size 11's Floodlit Synthetic Pitch, 7's Grass Pitch, Meeting Room, as well as changing rooms, referees room and first aid room.



## Environment

Lumphinnans is well located for access to nature. Nearby there is open countryside and the pond area. Lumphinnans Social Group has secured funding for the Pond Area, but this requires further investment to continue the improvements that are required.



## Transport

There are good transport links to the motorway M90 to Edinburgh and regular bus service to Dunfermline. There is also a Park and Ride facility a few miles away with bus services to various locations including Glasgow. There are train stations in nearby Cowdenbeath and Lochgelly (Fife Circular Route to Edinburgh).





# From our kids perspective

*Pupils from Lumphinnans made their contribution to the Lumphinnans Action Plan by completing the questionnaire. In total 50 pupils from P1 to P7 took part.*

## Children's likes

Children in primary 1/2 do these things in their spare time; go on the ipad/tablet, play with toys, play with fidget spinners, go to after school club, play on the x-box, play on the playstation, play outside, play with their dog, have a water fight, watch TV, play the computer. Pupils in P1/2 are members of clubs, Swimming, football, Gymnastics, After school club, Hockey, Breakfast Club, Dancing, Golf, Family sport sessions, Judo. The children like playing outside, the animals on lumphinnans farm, the school hub, Playing with friends and all the nice people, playing football with my friends.

Primary 1 children: Play with friends, football, dancing, gymnastics, swimming and boxing in their spare time. A number of them go to clubs in Cowdenbeath and Lochgelly. They like school, friends and the park.

“I do colouring sheets in my spare time. I like the playground”

“I like playing with my friend. I go to afterschool club and breakfast club. I like the kindness”

“I like to play my x-box. I go to gymnastics at Lumphinnans primary school. Ice cream van”

“I like playing with my friends. Nice adults”

“I like to go horse riding and to football lessons. I am a member of a football club. Teachers at school”

“Trim trail Outdoors”

## Children's Dislikes

When people are nasty. Bullies

Too busy with cars hard to park  
maths and language

The fighting

Older boys and girls at the park who swear and are not nice

Annoying people



# A shared vision for our community

- ☞ **Our Community thrives on its community spirit. We will continue to encourage all residents, local groups and businesses alike to work together to create a Sustainable, Vibrant, Safe, Caring and Clean environment for all who live and visit the area.**
- ☞ **A friendly place, where annual events are well supported and enjoyed by all age groups.**
- ☞ **Everyone works together to make Lumphinnans a better place to live and we help every group that is trying their best.**
- ☞ **A place with good affordable community and recreational facilities and activities for all.**
- ☞ **We will continue to build a strong volunteer base that cares for and respects its community members.**
- ☞ **The local environment is welcoming, well kept and enjoyed by all. With a good network of local paths, people enjoy getting out and enjoying nature.**



## Lumphinnans Likes

**12%**  
Facilities

**25%**  
Environment

*“I have lived in Lumphinnans all my life and that has been 90 years and there is not another place like it”*

*“A very pleasant village and friendly people”*

*“Nice quiet area and most people are welcoming and friendly”*

*“Community Spirit”*

*“Excellent Astro Turf facilities”*

*“I love the area and the open spaces, country walks on your doorstep”*

*“How people come together when things get tough”*

**56%**  
Community Spirit

**11%**  
Activities

*“It is a great village so help us make it great again”*

*“You can get a bus to many destinations”*

*“Its size, its location, near several towns but it is also near many countryside walks and near the sea”*

*“The School Community Council/Parent Council/ Lumphinnans Social Group”*

*“The Sports Hub The Annual Funday”*

*“The Wildlife, Centralized for commuting, Two good golf courses on either side of us”*

*“Localized to Lochore Meadows”*





## Lumphinnans Dislikes

**31%**  
Parking

**28%**  
State of Play Facilities

**18%**  
Shops

**17%**  
Unclean, untidy Environment

**11%**  
Lack of Community Activities/Events

“The cars racing up the road at Sycamore Crescent”

“The traffic problems at school and round the streets”

“Lack of shops”

“All the litter that lies about”

“Dog fouling - irresponsible dog owners”

“Area in need of regeneration”

“Lack of amenities for local children”

“Playpark needs updated Pond area requires clean up. Not enough things for kids to do without having to pay for it (Astro Turf)”

“Old garages at Ochil View need a clean up”

“Nowhere for the community to socialize or meet. There are no facilities for youngsters, teenagers or the elderly to retreat to or meet friends”

“The hub in Lumphinnans expect you to pay £34 an hour that is a disgrace for Lumphinnans Village to pay. Lumphinnans is not the same place I grew up in, there was always something to do and go to, there was plenty of shops, a social club, a pub but they are all gone now”

# THEME 1: Community Facilities/Activities



**These are the main strategies and priorities the community will work towards achieving in partnership with public agencies and other supporters.**

There was a strong feeling from the survey of community spirit. The community felt that to continue this would be to increase the number of events, increasing the use of existing community facilities and to increase number of activities for all age groups. Although there is a Sports Hub the general feeling that it is too expensive for the community to access and this is a barrier for any groups who wish to hire the facilities. Community use at the school is limited as it is closed during holidays and only open for the Out of School Club. The need to improve play facilities was also identified. The play park in Lumphinnans needs upgraded.

## **Upgrade Play Park**

- Set up an action group to take this forward – work with Fife Council involve Parent Councils, school children
- Make a list of all play areas, equipment and condition
- Agree priorities for improvement & draw up a programme of work
- Raise funding for improvements

## **More Activities for Children and Young People and Families**

- Engage with the young people of Lumphinnans to identify what's important to them and what type of activities they want to see happen. From this we will work
- Ensure activities that are already in place for the young people are advertised widely
- Support Lumphinnans Bowling Club to enable them to continue to provide a facility that all the community can utilize as a social meeting place and as a sport venue
- Support Lumphinnans Football Teams to enable them to continue to provide an activity that benefits the health of the players and young children that are involved in the youth team

## **Address the cost of HUB with Fife Sports and Leisure Trust**

- Lobby and work together with Fife Sports and Leisure Trust for better access to Lumphinnans Sports Hub and a fair charging policy to help encourage more local groups to use it

## **Enhance Annual Activities**

- Continue to support Lumphinnans Social Group with their annual Summer Event
- Develop Events Calendar to co-ordinate and promote events
- Investigate potential for other events and sources of funding

## **Potential Partners**

**Fife Council, Lumphinnans Community Council, Lumphinnans Social Group, Lumphinnans Bowling Club, Lumphinnans Amature Football Club, Lumphinnans Youth Team, Fife Sports and Leisure Trust**

## THEME 2: Environment



**These are the main strategies and priorities the community will work towards achieving in partnership with public agencies and other supporters.**

The community would like to see more floral displays in the village. The pond area improved and utilised as an outdoor classroom for the children to access and learn about nature and their environment.

The recently formed Lumphinnans Tenants and Residents Association are looking to create a Community Garden to encourage the community to become involved with planting and growing.

### **Continued Improvements to Pond Area**

- Continued improvements to Pond Area
- Continue to work with Fife Council and potential funders to ensure Pond area is improved for the benefit of the community and can be utilised by the primary School Children and After School Club

### **Deal with Dog Fouling**

- Learn from other Coalfields Community Futures communities who have tackled this issue in their communities
- Work with others to campaign for clean streets and parks e.g. Primary School
- Work with Fife Council to make sure there are sufficient bins and green bag outlets available.
- Explore setting up a green dog walkers initiative
- Raise awareness of the importance of taking personal responsibility

### **Community Garden**

- Work with Lumphinnans Tenants and Residents Group
- Encourage volunteers and schools to get involved
- Raise funds or sponsorship
- Start growing!

### **Brighten up Village (Floral Enhancements)**

- Encourage more volunteers to assist with floral displays throughout the village
- Investigate more funding sources

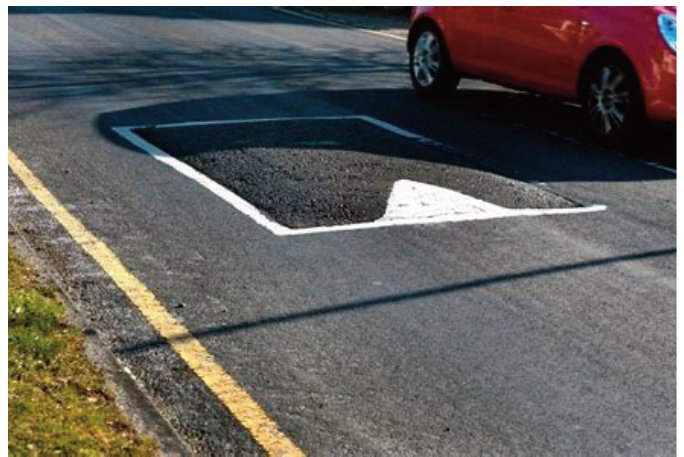
### **Action on Litter**

- Draw up a priority list of areas that need to be tackled
- Find out if Community Payback can assist
- Organise a Clean Up Lumphinnans event

### **Potential Partners**

**Lumphinnans Community Council, Lumphinnans Tenants & Residents Association, Lumphinnans Primary School PTA, Lumphinnans Social Group, Cowdenbeath After School Club**

## THEME 3: Roads & Parking



**These are the main strategies and priorities the community will work towards achieving in partnership with public agencies and other supporters.**

The village has issues both with the speed of traffic entering the village and traveling around the streets. Parking is a big issue at the school and in the residential streets, there are always problems when there is a football match being played at the Sports Hub and the residents around the area are badly affected.

### **Parking around the School**

- Work with the school and parents on an awareness raising project

### **Address parking issues**

- Carry out a mapping exercise to identify potential areas suitable for use as parking bays
- Work with Fife Council to look at ways to improve parking in the village

### **Speed calming measures**

- Work with Fife Council to explore options to reduce car speeds through the village

### **Road maintenance**

- Identify priority road & pavement repairs and liaise with Fife Council to have them carried out

### **Potential Partners**

**Fife Council, Lumphinnans Community Council, Lumphinnans Primary School PTA, Cowdenbeath After School Club**

## THEME 4: Economy



**These are the main strategies and priorities the community will work towards achieving in partnership with public agencies and other supporters.**

Lumphinnans has a higher than the national average of residents having few or no qualifications, this could be addressed by investigating training opportunities for people to participate in, look at holding classes in a local venue that will encourage them to attend.

### **Employability Initiatives**

- Organise an open day with local employers & training providers e.g. Babcock, Carnegie College, Sky, Amazon
- Work with Living Solutions in Cowdenbeath to promote apprenticeships and training opportunities

### **Skills Development i.e. Healthy Eating classes**

- Investigate classes that could be beneficial to the community

### **Potential Partners**

**Fife Council, Lumphinnans Community Council, Lumphinnans Social Group, Coalfields Regeneration Trust, Living Solutions**

# Making the links to the Fife Community Plan

Fife’s Community Plan 2011-2020 sets out three high level outcomes, each with a number of long term outcomes towards which the partnership groups will work alongside other key groups. Fife’s Community Planning Partners have signed up to these shared outcomes. Lead partnership groups will work together with the people and communities of Fife to deliver these objectives, with each partner providing a unique and valued contribution.

Fife Community Plan High Level Outcomes	Lumphinnans Community Action Plan Themes
Reducing Inequalities Increasing Employment Tackling Climate Change	Community Facilities Community Activities Environment Public Services

## Making it Happen

This Community Action Plan sets out the priorities for the development of Lumphinnans over the next 5 years as identified by the community through an extensive process of community engagement carried out over a period of 5 months, May to September 2017.

### Information on how to get involved or just be kept informed

The Community Action Plan is not just for the few but for everyone, we hope you will read it, consider its content and help towards making it work by taking action where you are, in whatever way you can. If everyone did something positive for their community every day, then what a difference that would make!

Many thanks go to all those who took their time to share their views, to the volunteers and participants who made the Community Voting Day events a great success. Thanks go to members of the community who contributed the images in this Action Plan.

To find out more information about the Action Plan or to volunteer with any projects please contact:  
**Lumphinnans Community Council**



# Early Actions funded through Participatory Budget



**Lumphinnans Community Council  
Environmental Enhancements in Village**



**Lumphinnans Bowling Club  
Entrance enhancements**



**Lumphinnans Social Group  
New Equipment**



**Lumphinnans United AFC  
Training Equipment**



**Cowdenbeath After School Club  
New Equipment**



**Lumphinnans Tenants & Residents Association  
Community Garden**



Design and Print: Armstrong Printing (Alloa) Ltd.

The Coalfields Regeneration Trust is a Charity registered in England and Wales (No. 1074930), a Charity registered in Scotland (No. SCO39277) and a Company Limited by Guarantee registered in England and Wales (No.3738566).

The Registered Address is 1 Waterside Park, Valley Way, Wombwell, Barnsley, South Yorkshire, S73 0BB.