



BELPER
HOCKEY CLUB

www.belperhc.co.uk

BELPER HOCKEY CLUB

WELCOME PACK



www.belperhc.co.uk

Christchurch Meadows, Bridge Street, Belper
DE56 1BA

CONTENTS



- 01 *CHAIRS' MESSAGE*
- 02 *CLUB STRUCTURE*
- 03 *HOCKEY AT BELPER*
- 05 *OUR JUNIORS*
- 06 *MEMBERSHIP FEES*
- 07 *SAFEGUARDING*
- 07 *COMMUNICATION*
- 08 *SOCIALS*
- 09 *COMMUNITY*
- 09 *GET INVOLVED*
- 10 *RESPECT IN HOCKEY*
- 11 *COMPLIMENTS & COMPLAINTS*
- 12 *GET IN TOUCH*



BELPER
HOCKEY CLUB

CHAIRS' MESSAGE



**BELPER
HOCKEY CLUB**

www.belperhc.co.uk

*Welcome back to
another fabulous
season of
hockey!*



For those of you who are new to us, a very warm welcome to our Club. We are a friendly and inclusive Club, offering hockey for all ages and abilities, and we hope that you find this information pack useful.

We are proud to have been playing hockey here in Belper since our Men's section was established in 1908, with the Ladies section following in 1920. The Club has always been involved at local, regional and international level, with numerous players being selected for county and regional squads, with some going on to represent teams at national level. The Club forms part of the wider Belper Meadows Community Sports Club, which includes cricket, bowls and tennis.

We have recently been awarded ClubMark status by England Hockey, which is a cross-sport accreditation scheme for community clubs that has raised the standards of delivery, welfare and programmes within clubs.

This season our Ladies and Men's sections will continue to work closely together to integrate all the sections of the Club to become one 'Belper Hockey Club'. This will be an ongoing process as we work towards full alignment as one Club, but one that we are committed to achieve.

We are delighted to have recently submitted our application to England Hockey to become a Talent Centre. This accreditation recognises high quality provision for players at early development level within our junior programme. More news on this will follow.

On behalf of the section Chairs at Belper Hockey Club, may we wish you good luck for a happy and successful season ahead!

Marianne + Charlie

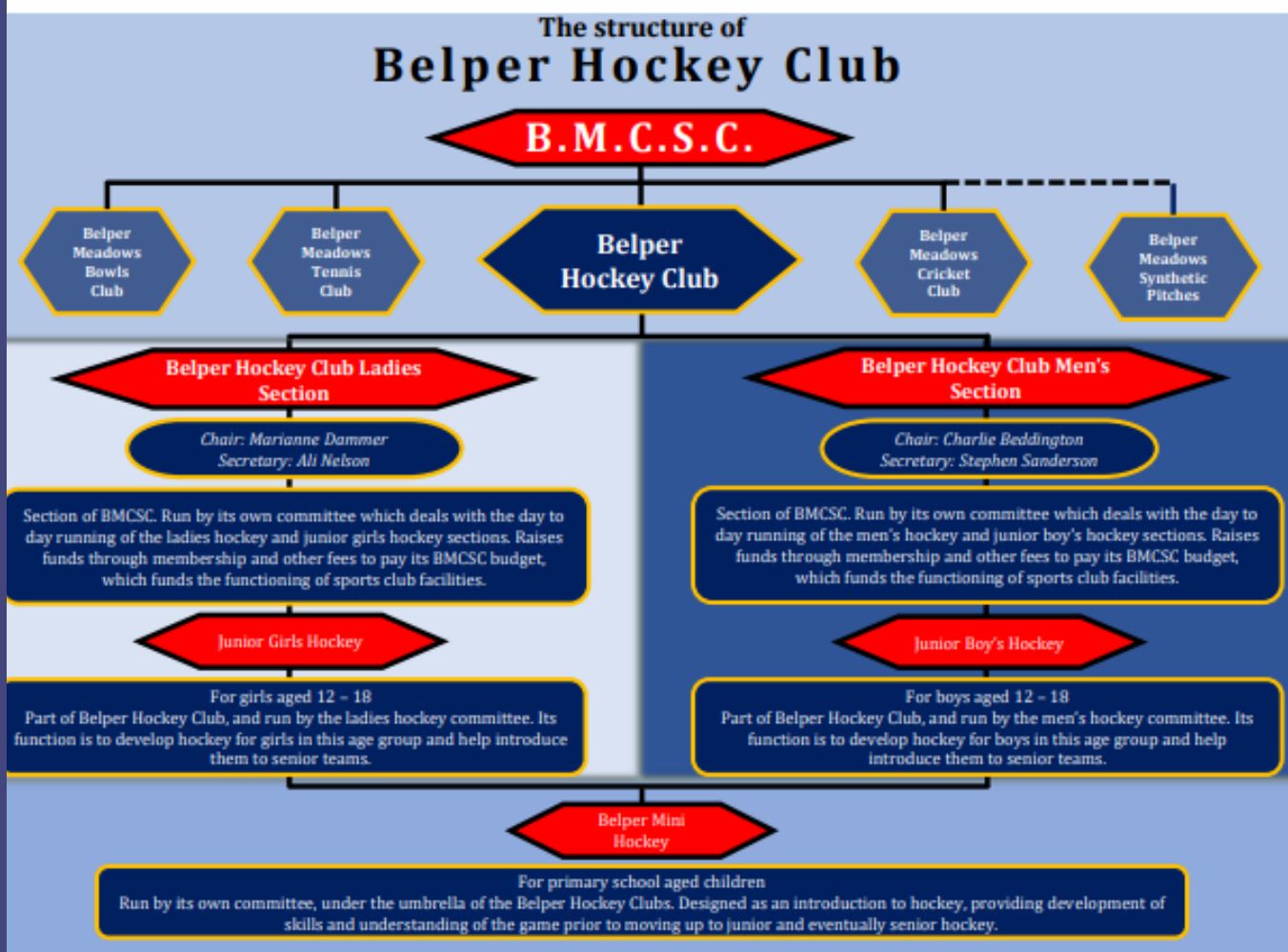
Chairs of Belper Hockey Club

www.belperhc.co.uk

Christchurch Meadows, Bridge Street, Belper
DE56 1BA

CLUB STRUCTURE

BELPER MEADOWS COMMUNITY SPORTS



LADIES

We have six Ladies teams. Our Ladies first team play National League hockey in the England Hockey Conference Midlands League.

The Ladies 2s-6s play Midlands League hockey, with the Ladies 6s being a development team. Ladies teams train on Wednesday evenings at Belper Meadows from September to April, with most matches being played on Saturdays. During the summer, we also offer Ladies Summer league hockey, available for all abilities, which are fun and social events.

MENS

We have eight Men's teams. Our Men's first team play National League hockey in the England Hockey Conference North League. The Men's 2s-8s play Midlands League hockey, with the Men's 8s being a development team. Men's teams train on Tuesday evenings at Belper Meadows, with an additional training session for first team players (invitation only) on Thursday evenings. Matches for the Men's 2s-8s are played mostly on Saturdays, and the Men's 1s play mainly on Sundays.



REGISTERING AS A PLAYER

For information on how to register on the England Hockey Game Management system (GMS) and transfers from other clubs please click here or paste the link into your browser.

<https://whostheumpire.com/signup.php>



HOCKEY @ BELPER

SOCIAL HOCKEY

Social mixed summer hockey sessions are run on Wednesday evenings from the end of April through the summer, for a social play, and catch up in the clubhouse afterwards. Minimum age is 12 years old. It's a pay to play session, so no booking required.

THE SNAILERS!

For our more senior members who want to keep playing hockey, there is a meet up roughly every six weeks on a Wednesday afternoon for hockey and a chat. Please get in touch if you would like more information.

BACK2 HOCKEY

Back2Hockey is aimed at players who may not have picked up a stick for a few years, or looking to play for the first time.

Please get in touch with us if you would like more information about any of the ways you can play hockey with us!

Whatever level of hockey you play, we are passionate about player development and run courses over the season aimed at gaining qualifications in umpiring, coaching, first aid, and even bar training! If this is something that you would like to find out more about, please contact us!

MASTERS PLAYERS

We run Men's Masters teams at club level at over 40s, 50s and 60s. We are very proud that we have Ladies and Men's members of the Club currently representing England or Wales in Masters Hockey in the o40s, o45s, o50s, and o80s age groups. We also have approximately 15 players who currently represent their age groups at Regional Level too For members interested in trialling, we share selection dates throughout the season.



HOCKEY @ BELPER

OUR JUNIORS



*Our u14 Boys were Tier 1
England Hockey Cup
National Champions in 2023*

JUNIORS

We have a thriving and successful junior hockey section with our u14, u16, and u18 age group teams competing in the England Hockey tier knockout Cup Championships and various junior leagues throughout the season, both outdoor and indoor.

Some of our juniors have been selected to train at Talent Academy level. We are exceptionally proud that our u14 boys are the current England Hockey Tier One National Champions!

Junior Girls train on Thursday evenings. Additionally, for those players showing potential to play at 1st team level we run Development Squad sessions alongside the normal sessions to stretch and further develop our most talented players. Junior Boys train on either Monday evenings (u18) or Tuesday evenings (u14/u16), with the option to also attend a mixed training session.



MINI HOCKEY

Our Mini hockey section offers hockey to our very youngest members from the ages of 5-12. Fun training sessions are held on Sunday mornings for the Little Stars (u8s) and u10s, and Monday evenings for the u12s, with lots of tournaments arranged over the season to look forward to.

HOCKEY @ BELPER

MEMBER- SHIP




**BELPER
HOCKEY CLUB**

www.belperhc.co.uk

The annual subscription includes all training sessions and personal accident insurance. Subscriptions are taken equally by Direct Debit over the first four months of the season from September. Additionally, match fees are charged per game played, payable through ClubBuzz.

Please click on <https://www.marshsport.co.uk/england-hockey/clubs>

for detailed information on the insurance cover.

Membership Fees - 2023/24

Section	Annual Subs	Match Fees
Ladies Section	£210	£9 (average)
Junior Girls	£200	£6
Men's Section	£210	£10
Junior Boys	£160	£6
Mini Hockey (u12/u10)	£140	£5
Little Stars (u8)	£100	

FAMILY DISCOUNTS

MINI SECTION ONLY:

If there is a full paying minis member, any additional siblings will be eligible for a 25% discount on their annual subscription. The discount will be applied to the younger siblings.

WHOLE CLUB:

If there are 3 or more immediate family members across any sections of the club, each member will be eligible for 10% discount on their annual subscription (where no other discount is applicable).

Discounts will not be applied automatically. If you think you may be eligible for any of the above discounts, please contact Jo Marval by email: joanne@pjmarval.plus.com
The discount will be credited to your Belper ClubBuzz account.

www.belperhc.co.uk

Christchurch Meadows, Bridge Street, Belper
DE56 1BA

SAFEGUARDING

All young people have the right to be safe and enjoy their hockey. We all have a duty to safeguard and protect young people from harm. We take safeguarding seriously, as whilst we are an adult club we have a thriving junior section to ensure the longevity of the club. Any juniors joining the club must be happy and confident around adults. We strive to ensure that all captains, managers, coaches and officials who are working or volunteering with our young people have the appropriate level of safeguarding training, as it is vital that we maintain the high standards expected of us by our Governing Body, England Hockey, and protect those young people and volunteers alike.



COMMUNICATION

We will always communicate important club information through our website ClubBuzz, so please do keep your email up to date with us. Over the summer we are rebranding and relaunching our social media accounts, so please do give us a follow 'Belper Hockey Club' on FaceBook, Twitter and Instagram for lots of exciting news and photos as the new season progresses. We would love to hear your hockey news too, so please get in touch with our social media team if you have news to share.

We recognise the importance of Club development and have regular strategy meetings where we discuss short, mid and long terms goals for the Club. All members are most welcome to join these meetings. Everyone's input is important!



www.belperhc.co.uk

Christchurch Meadows, Bridge Street, Belper
DE56 1BA

SOCIALS

We are truly a very social, family club and we have a wonderful Clubhouse onsite where we host lots of social events over the year. We have a licensed bar, kitchen, coffee machine, a large screen TV, WiFi and lovely seating both inside, and outside on our balcony overlooking the pitch.

Join us for quiz nights, curry nights, come and watch the big game on TV nights, Christmas party night, end of season events, VIP experience for the Big Bonfire, you name it!

During the hockey season it's a great place to stay and have a drink and a catch up with friends and team mates, whilst watching some amazing hockey!

As a whole Club we finish off our season with an annual Dinner Dance, a great opportunity to dress up, eat some fabulous food and dance the night away.

NEW! We now have a book exchange in the Clubhouse. Just bring a book to take a book. Easy as that!



SOCIALS @ BELPER

COMMUNITY

We are very fortunate to be situated in a beautiful rural market town with a strong historical link to industry, specifically manufacturing nails, hence we are sometimes known as the 'Nailers'! We are very proud of our heritage, and to have been playing hockey in our local community for over 100 years!

Every year we host the ever popular Big Bonfire event that is well supported by the local community and run by volunteers from all sections of the Sports Club. This is usually a sold-out event and is a fabulous fundraiser for the Club, enabling us to invest back into our facilities, most recently using money raised to start phased improvements to our car park.

Over the course of the year, we also help support many other local events at our facilities, including Belper Harriers River Relay Run and Belper Rovers Run.



We are forging links with local primary schools to promote hockey in the local community and hope to arrange future introductory hockey sessions and in-school chats.

Our facilities, both pitch and Clubhouse, are available for hire too, please enquire!

GET INVOLVED

Volunteers literally power our Club and we are always on the look out for more volunteers, so if you would like to get involved and feel part of the wider hockey family, we can help you try something new, whether this is within the sport that you love and feel passionate about, or helping out at our local community events. Please get in touch with us for more information, or when completing the registration form.

There are lots of different ways to volunteer to suit how much time you can spare. Any contribution of your time will make a huge difference and it's a great way to get to meet us all!

www.belperhc.co.uk

Christchurch Meadows, Bridge Street, Belper
DE56 1BA

RESPECT IN

HOCKEY

We follow EH Guidelines in all that we do!

ALL INDIVIDUALS WILL:

- Respect the spirit of fair play in hockey. This is more than playing within the rules. It also incorporates the concepts of friendship, respect for others and always participating with the right spirit.
- Respect the rights, dignity, and worth of others.
- Conduct themselves in a manner that takes all reasonable measures to protect their own safety and the safety of others.
- Promote the reputation of the sport and take all possible steps to prevent it from being brought into disrepute.
- Protect themselves and others involved in the game from verbal or physical abuse and threatening or intimidating behaviour.



- Never use inappropriate language or gestures.
- Abide by the EH Safeguarding and Protecting Young People in Hockey policy and Procedures and Good Practice Guidelines.
- Abide by the EH Equality Policy.
- Abide by the EH Anti-doping Rules.
- Take personal responsibility to ensure that they are suitably insured for their activities.



BELPER HOCKEY

COMPLIMENTS & COMPLAINTS

We are committed to providing a quality service for our members and guests and working in an open and accountable way that builds trust and respect!

We of course, hope to receive lots of the former, however we understand that there may be occasions that we don't get it right.

If you have a complaint about the service you have received from us, please let us know so that we can try to resolve the issue. We recognise that many concerns will be raised informally, and dealt with quickly. An informal approach is appropriate when it can be achieved. But if concerns cannot be satisfactorily resolved informally, then the formal complaints procedure should be followed.

For more information on how to do this please see our full complaints procedure on our website.



www.belperhc.co.uk

Christchurch Meadows, Bridge Street, Belper
DE56 1BA

GET IN TOUCH



<i>Role</i>	<i>Name</i>	<i>Email</i>
Ladies Chair	Marianne Dammer	dutchgirl_007@hotmail.com
Men's Chair	Charlie Beddington	chasbeddington@hotmail.com
Membership Fees (Boys/Men/Mini Hockey)	Stuart Humphris	stueyhumph@gmail.com
Membership Fees (Girls/Ladies)	Ruth Lane	ruth@themilldesign.co.uk
Family Discount	Jo Marval	joanne@pjmarval.plus.com
Ladies Section Secretary	Ali Nelson	ali.nelson.hockey@gmail.com
Men's Section Secretary	Steve Sanderson	stephensando66@gmail.com
Junior Boys	Tracey Souch	tburrell1916@me.com
Junior Girls	Richard Robey	richardnrobey@gmail.com
Mini Hockey	Caroline Bucknell	carolinebucknellhockey@gmail.com
Volunteer Enquiries	Ali Nelson	ali.nelson.hockey@gmail.com
Courses- Umpiring/Coaching; First Aid; Bar Training	Judy Hooker	judynigel@btinternet.com
Safeguarding & Welfare Pitch Hire	Julie Carter	juliecarter47@outlook.com
Clubhouse Hire	Wendy Morris	wendypmorris@googlemail.com
Social Media	Sally Keegan Elliott Heath	sallywaltz@hotmail.com elliotttheath7@gmail.com



BELPER

HOCKEY CLUB

www.belperhc.co.uk



www.belperhc.co.uk

Christchurch Meadows, Bridge Street, Belper
DE56 1BA