

GW Arts & Sciences

THE GEORGE WASHINGTON UNIVERSITY
COLUMBIAN COLLEGE OF ARTS AND SCIENCES

Theatre & Dance

TAKING CENTER STAGE

Science and Engineering Hall

TRANSFORMING LEARNING AND DISCOVERY

What is Happiness?

BEYOND WEBSTER

Faculty Star Power

CELEBRATED AUTHORS INSPIRE STUDENTS

Spotlight

FALL/WINTER 2011

EDITOR

Denise St. Ours

ASSISTANT EDITOR

Alice Manning Touchette

CONTRIBUTING WRITERS

Mary Dempsey
Samara Sit

DESIGN

julsdesign inc.

PHOTOGRAPHERS

William Atkins
Jessica McConnell Burt

GW ARTS & SCIENCES IS PUBLISHED BY
THE GEORGE WASHINGTON UNIVERSITY
COLUMBIAN COLLEGE OF ARTS AND SCIENCES
801 22nd Street NW, Suite 212
Washington, DC 20052
(202) 994-6130
www.columbian.gwu.edu

UNIVERSITY PRESIDENT

Steven Knapp

COLUMBIAN COLLEGE DEAN

Peg Barratt

EXECUTIVE ASSOCIATE DEAN

Roy Guenther

ASSOCIATE DEAN FOR GRADUATE STUDIES

Tara Wallace

ASSOCIATE DEAN FOR UNDERGRADUATE STUDIES

Daniel Ullman

ASSOCIATE DEAN FOR RESEARCH

Geralyn Schulz

ASSOCIATE DEANS FOR SPECIAL PROJECTS

Randall Packer
Christopher Sterling

ASSISTANT DEAN FOR ADMINISTRATION

Daniel Cronin

ASSISTANT VICE PRESIDENT OF DEVELOPMENT

Barbara Tesner

WEB PROGRAM MANAGER

Ryan Dellolio



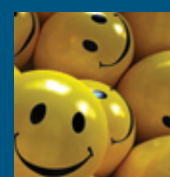
4
SCIENCE AND ENGINEERING HALL



16
FACULTY STAR POWER



10
THEATRE & DANCE



34
WHAT IS HAPPINESS?

NEWS

Science and Engineering Hall 4
News Briefs 8

LEARNING

Faculty Star Power 16
Arctic Adventure 18
Planet Forward 19
Driving the Discussion 20
A Refugee's Tale 21

SCHOLARSHIP

A Question of Faith 22
Greenhouse Gas Reduction 23
Selected New Books 24
Research Briefs 26

ALUMNI AND FRIENDS

Gift of Education 28
Still Crazy 29
A New Generation of Scientists 30
Support and Service in Brief 32

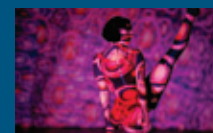
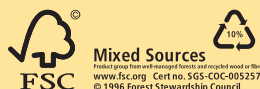
HONOR ROLL

Honor Roll of Donors 38

MEMORIAM

In Remembrance 47

THE GEORGE WASHINGTON UNIVERSITY
COLUMBIAN COLLEGE
OF ARTS AND SCIENCES



On the cover: Then-student Sarah Wilson, BA '10, dances in *Hekuras*, choreographed by Maida Withers. See related story, page 10.



Dean's Message

Greetings to all alumni, parents, faculty, and friends of the Columbian College of Arts and Sciences! As I enter my fifth year as dean, it is gratifying to reflect on where we've been and exciting to look ahead to where we're going during the months and years ahead.

One of the biggest developments since I've come on board is Science and Engineering Hall. Ground has been broken on this incubator of learning and discovery, designed to maximize collaboration across disciplines through teaching and research neighborhoods and open, integrated classroom and lab space. These flexible spaces will encourage shared conversations among faculty and students, scientists and engineers, bridging the lecture, lab, and seminar, and leading to new ideas and discoveries. The behind-the-scenes effort to move this remarkable facility from drawing board to bricks and mortar has been monumental, and I applaud all of those involved in helping get us to where we are today.

This fall also marks the implementation of significant reforms in undergraduate general education aimed at instilling the skills necessary to be nimble in the 21st century. The new General Education Curriculum educates students to engage in active intellectual inquiry by developing analytical skills, diverse perspectives, and oral and written communication expertise. The requirements incorporate rigorous academic benchmarks to measure skill level and allow greater flexibility in pursuing a variety of interests. I am proud to say that, with the launch of this pioneering course of study, Columbian College is a leader among the nation's liberal arts institutions.

George Washington once said that the arts and sciences are "essential to the prosperity of the state and to the ornament of human life." At Columbian

College, advancing discovery, creativity, and inquiry are integral to our mission. We are a place where the arts, the humanities, the social sciences, and the natural sciences come together to form a nexus of ideas and opportunities. And we're constantly adapting to an ever-changing world through new majors, minors, master's and PhD options, research and internship opportunities, and an array of professional programs that are pushing our students to excel.

What we do, of course, could not happen without a dedicated group of faculty, many of whom are top scholars in their field, and the commitment of our donors, whose generosity affects every facet of our work. From scholarships and professorships to program and research support, we could not begin to envision new possibilities without the philanthropy of our alumni and friends—some of whom you'll read about here.

Columbian College is a large enterprise, and our community is extensive, so it's impossible to capture all that we do within the pages of this magazine. To learn more about what's happening on and off campus, join us on Facebook or Twitter, or visit us at columbian.gwu.edu. If you're not receiving our monthly electronic newsletter, please let us know. It's always a pleasure to hear from you, and I invite you to stop by for a visit the next time you're on campus.

Sincerely,

Peg Barratt

Dean, Columbian College of Arts and Sciences
ccasdean@gwu.edu
www.columbian.gwu.edu

“THIS INVESTMENT IN NEW CLASSROOMS, LAB SPACE, AND RESEARCH EQUIPMENT WILL ENABLE OUR PROGRAMS TO ATTRACT AND GRADUATE THE NEXT GENERATION OF SCIENTISTS AND INCREASE OUR ALREADY CONSIDERABLE CONTRIBUTION TO SCIENTIFIC ADVANCES.”

RANDALL PACKER, PROFESSOR OF
BIOLOGICAL SCIENCES





Transformative Impact of Science and Engineering Hall

HOW MIGHT the worldwide resurgence of tuberculosis be controlled using specifically designed chemicals? What is the biological basis and psychological impact of autism? How can radioactive wastes be stored safely?

From developing life-saving treatments to unlocking the mysteries of subatomic structure, Columbian College is addressing these and other pressing scientific issues of our time. In classrooms and labs—and through partnerships with such prestigious institutions as the Smithsonian and the National Institutes of Health—faculty are involved in a broad range of scientific endeavors, engaging students of biology, chemistry, physics, and hominid paleobiology.

artist rendering by Ballinger



WHAT ARE OUR SCIENTISTS UP TO?

Nuclear Fuel Storage: Chemist **Christopher Cahill** explores soluble uranium in an environment containing dissolved organic material, such as a pond or bog. His studies involve heating uranium salts mixed with organic compounds—the resulting solids are then analyzed using X-rays to generate three-dimensional, atomic-level images of their structures. Cahill discovered that soluble uranium, when combined with iron-rich minerals, will change into an immobile form. His findings could impact the design of reactors and nuclear waste storage sites as well as future groundwater studies.

Fish Evolution: Biologist **Patricia Hernandez** examines the complex comparative cranial/facial anatomy of fishes through a broad lens of evolutionary development. Her past research indicates that the skulls of fish are much more complex than mammalian skulls, showing an enormous amount of structural diversity. Hernandez has found that a particular signaling pathway is required for jaw growth, cartilage growth and, most importantly, to allow for differentiation of gill cartilages.

Human Evolution: Hominid paleobiologist **Brian Richmond** studies human evolution by analyzing skeletal fossils to gain further understanding on the origin and evolution of human gait, feeding biomechanics, and manual dexterity. His discovery of a set of 1.5 million-year-old human ancestor footprints in Kenya shows the earliest direct evidence of modern human-style upright walking (bipedalism). Richmond and his team also found evidence that our early ancestors consumed marine and freshwater fish, which may have led to the growth of a larger brain.

Force of Nature: Nuclear physicist **Allena Opper** makes precise measurements of symmetry violations to understand the fundamental forces of nature. She works with collaborators at the Jefferson Lab in Virginia to scatter high energy electrons from protons to determine if their interaction depends on the way the electrons are aligned. That dependence on alignment would violate mirror symmetry (called parity) and show a connection between the Earth's electromagnetic force and the "weak" nuclear force that occurs within the Earth's Sun. The Standard Model of particle physics predicts this dependence to be infinitesimal, so Opper's work to develop elaborate techniques to precisely measure that dependence is critical to understanding the dynamics of sub-atomic particles. It's a level of precision that could lead to new insights on the early development of the universe.

On the site that was once the University Parking Garage, a new eight-story, 400,000-square-foot anchor of learning and discovery is being built to better accommodate the biological and physical sciences, as well as the engineering and applied sciences. Slated to open in early 2015, Science and Engineering Hall (SEH) promises to secure GW's place as the premier scientific research university in the nation's capital.

"The facility will have a transformative effect on Columbian College and the entire university," said the college's Associate Dean of Special Projects and Professor of Biology **Randall Packer**. "This investment in new classrooms, lab space, and research equipment will enable our programs to attract and graduate the next generation of scientists and increase our already considerable contribution to scientific advances."

The organizing concept behind the facility is the integration of teaching and research on all floors and the creation of clusters of interests among scientists and engineers. It will nearly double current lab and classroom space and will incorporate core research facilities. Teaching laboratories will reflect the latest pedagogical thinking about how students learn science most effectively.

"The answers to the big questions—like how will we meet our energy needs while protecting the environment—require multidisciplinary approaches," said Columbian College Dean **Peg Barratt**. "The open layout of this new building, with its teaching and research 'neighborhoods,' will facilitate and encourage collaboration."

The facility's innovative features include:

- A high bay with a 30-foot ceiling for research involving large-scale objects, such as building particle detectors for high-energy physics experiments
- A 3,600-square-foot, state-of-the-art greenhouse to study the impact of climate change on plants and animal/plant interactions



artist renderings by Ballinger

- An imaging facility to enable investigators to “see” into materials and cells with greater detail and clarity
- A “clean room”—where air quality, temperature, and humidity are regulated—for students and faculty to create computer chips
- A multi-use auditorium and a media center for hosting national science symposia, conferences, and keynote addresses by distinguished visitors
- Flexible space to accommodate developing technologies

“We’ve already seen the impact of modern, spacious facilities . . . such as the consequential research of the Vertes Research Group when it moved to renovated space in Corcoran Hall six years ago,” said **Michael M. King**, professor and chair of GW’s Department of Chemistry. “SEH has the potential to multiply that effect throughout the facility, creating new opportunities and making a difference in ongoing work.”

The Vertes Group is led by Professor of Chemistry **Akos Vertes**, whose accomplishments include the development of a groundbreaking technique that could revolutionize the study of chemical processes within cells. (*See research brief, page 27.*)

Illustrations, above and right, of interior SEH spaces

THE PROMISE AND THE POTENTIAL

The promise of the new facility has already advanced efforts to grow Columbian College’s research enterprise and attract new faculty. Among those recently recruited are **Damien O’Halloran**, a postdoctoral fellow at the Center for Neuroscience at the University of California, Davis, who will join the Department of Biological Sciences; and, to the Department of Chemistry, **Adelina Mitova Voutchkova**, a Yale post-doctoral fellow whose research interests include green chemistry, sustainability, toxicity, and hazard reduction of commercial chemicals. Both O’Halloran and Voutchkova will begin their tenure at GW in January. It is anticipated that approximately 20 more scientists from the nation’s top laboratories and academic institutions will be hired by 2015.

For students, the impact of the building on learning will be all-encompassing. At both the undergraduate and graduate levels, students will have the opportunity to study how to plan and conduct an experiment and how to interpret results in a building where science is practiced all around them.

“With our strong commitment to the integration of undergraduate research in our curriculum, we look forward to inviting more of our stellar students into spaces that will accommodate them,” said King.

The location of Science and Engineering Hall in a metropolitan area that has become a center for world science will not only bolster the recruitment of top students and faculty, it will also build upon existing partnerships with government agencies, think tanks, museums, and other national and international organizations. “This new building,” added Barratt, “will enable us to be a node and a convener for scientific research on a global scale.”



News Briefs

THE TEXTILE MUSEUM JOINS GW

The Textile Museum, with its internationally acclaimed collection of 18,000 textiles and carpets dating from 3,000 BC, will have a new home on the GW campus beginning in 2014. Exhibitions and programs will be presented to the public as part of an approximately 35,000-square-foot museum at G and 21st streets. The building will include galleries and space for academic and scholarly activity, public lectures, and other forums, all of which will be integrated into a wide range of academic studies. Among the disciplines benefiting from this rich cultural resource will be anthropology, fine arts and art history, interior design, museum studies, Judaic studies, Africana studies, and American studies.



The Textile Museum's *Colors of the Oasis: Central Asian Ikats*

photo by Kevin Allen, courtesy of The Textile Museum

STUDENTS PART OF WIKI PUBLIC POLICY INITIATIVE

Students from Columbian College's Trachtenberg School of Public Policy and Public Administration are making a difference in the Wiki world of public policy through the Wikipedia Public Policy Initiative. The school is one of the first in the nation to participate in this pilot project sponsored by the Wikimedia Foundation, a nonprofit organization overseeing Wikipedia. The goal is to improve the quality of public policy-related articles on Wikipedia through student contributions.

NEW BUZZ ON CAMPUS: AN URBAN APIARY

Fans of Founding Farmers, the Foggy Bottom restaurant known for its fresh, local, and



Lisner Hall's rooftop bee colony

sustainably produced food, now have something new to buzz about. In a venture with the university, the restaurant is expanding GW's urban bee colony on the roof of Lisner Hall and will begin using the apiary's honey in its cooking. The new hives also broaden research opportunities and enable Columbian College biologists to play an active role in encouraging local sustainability and green living.

Founding Farmers has also established a \$5,000 scholarship for an undergraduate student to oversee the apiary. The first recipient is biology senior **Heidi Wolff**, who is using the hives in her research comparing, through pollen analysis, the differences between city bees and those found in rural areas.

MUSEUM STUDIES TO LAUNCH IRAQI RESIDENCY PROGRAM

To support Iraq's cultural heritage, the Museum

Studies Program is partnering with the State Department's International Relief and Development organization to introduce an Iraqi Museum Residency Program in summer 2012. Iraqi museum professionals will travel to the United States to participate in this five-month learning and training initiative, which will include courses in exhibition development and design, museum management and leadership, and an analysis of the modern museum audience. GW faculty teaching the courses will be joined by guest speakers from the National Geographic Society, the Smithsonian Institution, The Phillips Collection, and other entities. Participants will explore D.C.-area museums and take guided field trips to New York and Philadelphia, as well as Mount Vernon, Monticello, and Colonial Williamsburg. The U.S. Embassy in Baghdad is involved in selecting program participants.

COHEN WINS PRESTIGIOUS GUGGENHEIM FELLOWSHIP

Jeffrey J. Cohen, professor of English and director of the Institute for Medieval and Early Modern Studies, won a coveted Guggenheim Fellowship for his work in medieval literature. Cohen was one of 180 fellows, chosen from among 3,000 applicants, recognized for their “exceptional capacity for productive scholarship or creative ability in the arts.” As a Guggenheim Fellow, Cohen plans to complete his book *Stories of Stone: Dreaming the Prehistoric in the Middle Ages*. His work also will be supported by a prestigious fellowship from the American Council of Learned Societies.

NEW LEADERSHIP AT COLUMBIAN

Professor of Mathematics **Daniel Ullman** succeeded **Paul Duff** as Columbian College’s associate dean for undergraduate studies. Ullman, who joined GW in 1985, chaired the Department of Math from 2001 to 2006 and was the 2005 recipient of the Kenny Teaching Prize. In 1995, he co-founded the GW Summer Program for Women in Mathematics, which continues today. Ullman holds a PhD in mathematics from

the University of California, Berkeley, and currently works with D.C. Public Schools to advance teaching and learning enrichment programs in math and science. Last spring his book, *A Mathematical Look at Politics*, was released. (See page 24.)

Chris Sterling, professor of media and public affairs and public policy and public administration, joined the dean’s staff as an associate dean for special projects. During Sterling’s three decades at GW, he directed the former Center for Telecommunications Studies, chaired the Department of Communications, served as the college’s associate dean of graduate studies, and authored several books, including the recent six-volume *Encyclopedia of Journalism*. He received his doctorate in communication from the University of Wisconsin–Madison.

And **Barry Chiswick**, the new chair of the Department of Economics, was among the 18 full-time faculty members recruited this year by Columbian College. A renowned economist whose seminal research on labor markets and immigration has helped inform the nation’s public policy debate, Chiswick comes to GW from the University of Illinois, Chicago, where he served as a distinguished

professor and founding director of the Center for Economic Education. He is a former member of the President’s Council of Economic Advisers and the author of 14 books. Chiswick holds a PhD, with distinction, in economics from Columbia University. He is the 2011 recipient of the prestigious Study of Labor (IZA) Prize in Labor Economics.

ENHANCED CURRICULUM IMPLEMENTED

The fall semester brought noteworthy change to the Columbian College academic curriculum. Most significantly, a new General Education Curriculum for incoming freshmen has been implemented. The curriculum’s requirements encourage development of key analytic and creative thinking skills, as well as expertise in scientific and quantitative reasoning, diverse global and cross-cultural perspectives, and written and oral communication. The changes also include benchmarks to gauge expertise and achievement as well as more options for students to pursue interests outside of their majors or minors. The new requirements are designed to better prepare liberal arts undergraduates for success in the 21st century global workplace.

Undergraduate students also have more choices when it comes to majors and minors. Africana Studies, Organizational Sciences, and Peace Studies are three new study options among the 47 majors available to Columbian College students, and Mind-Brain Studies and LGBT Sexuality Studies join the 58 minors offered.

Graduate and professional studies have expanded as well with the addition of an MFA in Dance, an MA in Legal Institutions and Theory, and a graduate certificate in Exhibit Design. In addition, a new PhD



in Anthropology and an MA in Jewish Cultural Arts—the first degree of its kind in the country—will be launched in fall 2012. In total, Columbian College offers more than 60 advanced degree options in fields ranging from public policy to forensic sciences and art therapy.

spotlight



ASPIRE, ACT, ACHIEVE:
Theatre & Dance

“THEATRE IS A VERB BEFORE IT IS A
NOUN, AN ACT BEFORE IT IS A PLACE.”

MARTHA GRAHAM
AMERICAN MODERN DANCE PIONEER



MFA dance students receive instruction from Professor Maida Withers, left.



Student performance of the “Threepenny Opera”

Take Center Stage

The powerful grace of a dancer mid-air, the consuming passion of an actor immersed in performance . . . the performing arts are among the most enduring testaments to beauty, perfection, and our shared humanity.



Dana Tai Soon Burgess, who emanates sublime artistry and an approachable elegance, is propelling the creative spirit to new heights as chair of Columbian College’s Department of Theatre and Dance. He and members of his faculty are helping to build the department’s reputation as an innovative artistic force on the national and international scene.

“We are at a pivotal moment in the history of the department,” said Burgess, MFA ’94, whose credits include U.S. cultural ambassador, critically acclaimed dancer and choreographer, and founder of Washington, D.C.’s premiere contemporary dance company, Dana Tai Soon Burgess & Co. “Theater and dance transcends boundaries, both real and imagined. Our goal is to put GW on the worldwide map as a preeminent hub for the performing arts.”

A GLOBAL REACH

The Department of Theatre and Dance, with the D.C. metropolitan area as its backdrop, boasts the oldest and most extensive performing arts programs in the nation’s capital. Since the merger of dance and theater in 1987, the department has mounted 161 main stage productions, produced countless performance projects, trained hundreds of dance and theater professionals and, most recently, launched a globally focused MFA dance program. The broadening international perspective has become a department trademark.

Last spring, for example, a five-member dance ensemble led by Burgess—known for his synthesis of Eastern and Western dance aesthetics—traveled to the city of Ulaanbaatar through a grant from the Department of State and support from the U.S. Embassy in Mongolia. Only a handful of contemporary American dancers have ever performed in Mongolia.

“Contemporary dance has the capacity to bring different cultures together in the shared language of movement,” said Burgess. “The distance and impact of this program will resonate through the region on a multitude of levels.”

On another continent, Professor of Theatre **Leslie Jacobson** and Assistant Professor of Art Therapy **Heidi Bardot** traveled with students to Winterveldt, South Africa, a rural township of 700,000 with daunting demographics, including 50 percent unemployment, high HIV/AIDS infection rate, and serious problems with teen pregnancy, tuberculosis, family violence, and rape. At the town’s Bokamoso Youth Center, they worked with the center’s staff to teach life skills—including respect for oneself and others, problem solving, and anger management—through theater, music, dance, and writing. Earlier this year, a dozen of the Bokamoso youth came to GW to perform in a show based on their daily struggles and life experiences.

“The arts help to focus young people and enable them to understand their issues and challenges in new ways,” said Jacobson. “Through performance, the Bokamoso youth overcome the hardships they face every day. Seeing this transformative power of art, and being a part of it, is something my students will never forget. We all can benefit from this awareness.”

“The South Africa project combines two of the things I am most passionate about: theater and social politics,” added **Caroline O’Grady**, a 2010 graduate who made the trip to Winterveldt in 2009 and used a Gamow Fellowship to film a documentary about the community. “Despite the poverty, crime, and harsh conditions, the youth reach for a better life and future, grasping at any opportunity to further their education.”

ACADEMIC AND ARTISTIC EXPANSION

According to Professor of Dance **Maida Withers**, students select GW's theater and dance programs because they want to perform in an "intellectual environment."

"We are becoming known nationally and internationally for our interest in the creative process and experimentation," said Withers, whose award-winning Dance Construction Company has produced over 100 dance works and toured more than 18 countries. "Our program has always focused on the creative process as research, and experimentation as an important aspect of that research."

A 40-year tradition of guest artists also provides students with unusual collaboration opportunities on a global level. Last spring, dancer/choreographer Francisca Morand and students from the University of Chile came to work and perform with GW students for the Spring DanceWorks concert in April. The joint effort was made possible through the Dean's Scholars in Globalization Program. In May, a group of GW dance students followed suit, traveling to Chile to perform and take dance classes under Morand's direction.

"We find guest artists who are usually on the edge of becoming well-known and are taking risks as they are defining and establishing an aesthetic," noted Withers. "Our department has a strong reputation as a place that supports artists who aren't necessarily following a tried-and-true path."

The department also encourages student writers and actors to spread their wings. In March, Theatre and Dance, in a joint effort with the Department of English, mounted its fourth annual "New Plays Festival" featuring a collection of one-act plays co-written by students and recent graduates. GW is one of the only universities in the region to produce a student-written show, providing a rare opportunity for students to develop their work in the medium for which it is intended—live performance.

"The playwrights see the festival as an opportunity to try out as many new ideas as their energy and imagination allow," said **Jodi Kanter**, director of the Dramatic Literature Program and associate professor of theater. "Students don't just emerge from the festival with a better play, they emerge as better playwrights with a deeper understanding of what makes good theater."



Youth from South Africa's Bokamosos Youth Center learn lyrics of a song written by Theatre Professor Leslie Jacobson.

CAREER BY DESIGN

To broaden their learning experience, undergraduate students are encouraged to double major. For art history student **Alexandra Pinel**, taking on a second major in dance changed her life. “Dance was never part of my plan in college and never did I imagine getting an award or fellowship,” said Pinel, a native of France who was drawn back to the dance studio during her junior year. “Columbian College gave me a chance to follow my wildest childhood dreams while staying centered on scholarship through faculty guidance. I really found myself.”

Pinel spent a semester abroad attending the Berlin Metropolitan Studies Program at Germany’s Humboldt University, which deepened her passion for movement and choreography. As a Luther Rice Undergraduate Research Fellow, she filmed interviews with “Ossies” (East Berliners), and choreographed



Carl Gudenius, left, has designed sets and exhibits for more than 35 years

their stories into a multimedia project that eventually became “Stolen Spaces,” an honors thesis depicting the fall of the Berlin Wall. With graduation last May came a dream come true: an administrative job with the Alvin Ailey American Dance Theater.

The combination of academic rigor and innovation also follows students studying more technical aspects of performing arts, such as production design. They learn from faculty whose credits include set design in live theater, television, and exhibit halls. **Carl Gudenius**, deputy chair of the Department of Theatre and Dance, is a prime example.

For 35 years, Gudenius has been designing stage sets and working with stage lighting in Washington, D.C., New York City, and shows around the world. That vast expertise shapes his courses in production design, lighting design, scenic design, production drafting, and periods and styles.

THE ARTS AT COLUMBIAN COLLEGE

TAKE TOP-TIER PROGRAMS in music, dance, theater, the fine arts, interior design, art therapy, museum studies, and creative writing. Put them in a metropolitan area bursting with outstanding museums, galleries, archives, and performing arts venues. For good measure, throw in talented faculty, many of whom are practicing professionals. It’s a formula that results in Columbian College students excelling artistically and intellectually on the world stage.

In addition to Columbian’s programs in theater and dance, as well as creative writing (see story, page 16), the college turns out graduates ready for careers in:

ACADEMY FOR CLASSICAL ACTING

Offered by the Shakespeare Theatre Company in conjunction with Columbian College, the Academy for Classical Acting is the only full-time MFA program in the country focused exclusively on developing actors for classical theater. Under the guidance of the Shakespeare Theatre artistic director and a talented faculty of artists and scholars, the academy’s one-year intensive graduate program trains students in acting, voice and speech, movement, mask, the Alexander Technique, text, combat, dramatic literature, and theater history.

ART THERAPY

The Art Therapy Graduate Program merges the expressive use of drawing, painting, and sculpture with psychological concepts to help heal the mind and body. Now in its 40th year, the program was the first of its kind in the United States and one of the first to receive approval from the American Art Therapy Association. Students learn in state-of-the-art classrooms and studios and have access to international coursework and more than 100 internship options.

“WE ARE BECOMING KNOWN NATIONALLY AND INTERNATIONALLY FOR OUR INTEREST IN THE CREATIVE PROCESS AND EXPERIMENTATION.”

MAIDA WITHERS
PROFESSOR OF DANCE

“Carl is an enthusiastic professor and a visionary designer,” said Burgess. “And he has an incredible network that has helped our graduates get jobs in the production design field after graduation.”

The department’s connections with D.C. venues—including Arena Stage, Olney Theatre, and The Folger Shakespeare Library—have enabled hands-on opportunities for students. The MFA in Production Design requires students to undertake full-time, semester-long internships at a local professional theater.

“The aesthetics and skill sets students learn in theater design and production courses are a great foundation for a wide range of design disciplines,” said Gudenius. “These areas include television, film, themed environments, and special events.”

AN UPWARD TRAJECTORY

The department’s upward trajectory shows no sign of plateauing. The number of dance majors has doubled in the last 24 months and the department just launched a new graduate certificate in exhibit design, which includes faculty from the Museum Studies and Interior Design programs. The new certificate addresses the growing demand for top tier exhibits in venues ranging from corporate showrooms and convention centers to museums and high-end department stores.

This past summer also marked the reinstatement of the MFA in Dance for mid-career dancers, performers, and choreographers. Combining residency and distance learning to enable professionals, wherever they live, to maintain their careers, the hybrid program is attracting enormous interest both in this country and abroad. With the number of enrolled candidates surpassing initial projections, the MFA is another example of how the department is entering a new level of international recognition.

“We are a top-notch university with an exceptionally talented theater and dance faculty,” said Burgess. “We deeply care about nurturing and mentoring future dancers, actors, choreographers, directors, and playwrights, and we are perfectly positioned to elevate the department’s national and international profile.”

FINE ARTS AND ART HISTORY

The Fine Arts and Art History Department joins creative expression with art theory and history, challenging students to think beyond the classroom. The curriculum runs the spectrum from painting, sculpture, photography, and new media to studies in ancient and contemporary art. Classroom 102, the department’s student-run gallery, offers opportunities for collaboration even as it merges intellectual inquiry with hands-on learning. In addition, a new partnership with The Phillips Collection has resulted in a number of new educational opportunities, including the Conversations with Artists lecture series.

MUSIC

Located in one of the nation’s most eclectic centers of musical diversity, the Music Department takes pride in a faculty that includes members of the National Symphony and Kennedy Center orchestras, and a student body that has plenty of opportunities to take the stage on campus, in D.C., and on the road. But it’s not just about performing with orchestras, symphonies, wind ensembles, and jazz bands. Undergraduates expand their knowledge of music theory, composition, history, and literature as they develop critical thinking and writing skills.

INTERIOR DESIGN

A multifaceted program accredited by the Council for Interior Design, the curriculum encourages graduate and undergraduate students to push the boundaries of creativity as they craft innovative residential, commercial, and institutional spaces. Students move beyond the design studios through access to National Building Museum exhibitions, the Washington Design Center, the United States Green Building Council, and trade shows—enriching their learning through immersion in the thriving local design community.

Faculty *Star* Power: Celebrated Authors Inspire Students

RENOWNED WRITERS DOUBLING as college English professors is not a rarity among universities, but few institutions of higher learning can boast the concentration of teaching talent that exists within Columbian College's Creative Writing Program. These award-winning authors are not resting on their laurels; rather, they are dedicated and engaged mentors to the next generation of poets, playwrights, and novelists.

Take, for example, author **Edward P. Jones**, winner of the 2004 Pulitzer Prize in Fiction and the National Book Critics Circle Award for *The Known World*, and a recipient of a MacArthur Foundation fellowship (commonly called the "Genius Award"). After teaching one semester at GW as a Wang Visiting Professor in Contemporary English Literature, Jones officially joined the English Department in 2010 as a full-time professor.

"Professor Jones made us write the way people do in the real world," said economics major and creative writing minor **Chester Hill**, BA '11. "He turned us loose and said write 55 pages by the end of the semester. It was demanding, but it was cool being in class with a guy as decorated as he is and seeing his reactions to my work and that of other students."

"WRITERS HAVE TO TRUST THE DEEPEST PARTS OF THEMSELVES, BE WILLING TO EXPOSE THOSE PARTS, AND THEN SEPARATE THEMSELVES FROM THE WORK THAT'S ON THE PAGE."

JANE SHORE,
PROFESSOR
OF ENGLISH



A LITERARY BONANZA

In a city that has been a hub of literary creativity and a home to such esteemed poets and novelists as Walt Whitman, Elizabeth Bishop, and Gore Vidal, it seems only natural that GW's Creative Writing Program has blossomed, attracting writers who are the best in their field. The program's courses in fiction, poetry, and playwriting are combined with regular campus readings by visiting writers, and a number of student-run publications. The result: a lively literary community that is the envy of peer institutions around the country.

Small classes—no more than 15 students—enable one-on-one interaction that replicates the relationship between writers and editors. The curriculum for majors is rigorous and includes writing a short story, play, poem, or 50-page novella.



Creative Writing Director **Thomas Mallon**, the author of seven novels, including *Henry and Clara*, and winner of the American Academy of Arts and Letters' Harold D. Vursell Memorial Award for exceptional prose, is impressed by the way students respond to teacher involvement.

"When you start talking about how one of their characters might plausibly behave, they sense you're on their side, that you want the piece to be good," said Mallon, who is currently editing his eighth novel. "In the process, they're learning about organization, clarity, and continuity."

Critically-acclaimed poet **Jane Shore** joined the Creative Writing Program in 1989 as a Jenny McKean Moore Writer, a one-year writer-in-residence post that was established thanks to the generous legacy of Moore, a former student of playwriting at GW. Now a full-time faculty member, Shore won the 2010 Poet's Prize for her book *A Yes-or-No Answer* and is working on her sixth book, *New and Selected Poems*.

"I try to help my students discover what's different about them as people and put that into their writing," Shore said. "Writers have to trust the deepest parts of themselves, be willing to expose those parts, and then separate themselves from the work that's on the page."

Jessica Flynn, BA '04, took her first intermediate poetry workshop with Shore. "I remember going in feeling not at all confident in my ability to write a poem and leaving class at the end of the semester feeling like a poet, knowing I had a story to tell and the ability to tell it," she said.

After graduating from GW, Flynn went to New York University to earn her master's and work in NYU's Creative Writing Program. Over the years, she has stayed in touch with Shore and was honored last year when Shore read a poem at her wedding.

Other members of Columbian College's creative writing faculty include poets **David McAleavey** and **Gregory Pardlo**, fiction writer and essayist **Faye Moskowitz**, novelist **H. G. Carrillo**, and novelist and playwright **Patricia Griffith**.

"We're not trying to turn every major into a writer, but we are helping them accumulate skills that will be useful to them," said Mallon. "Our graduates may be surprised, but they will hear an employer in most any field say, 'You can write. You will be useful to me.'"



Edward P. Jones



Thomas Mallon with Katherine Hardwick, BA '11

Arctic Adventure:

Accessing Permafrost Layers of the Polar Region



A GW field crew in Alaska last year. Left to right: Josh Dugat (PolarTREC teacher), Dmitry Streletskiy, Ellen Hatleberg, Elliot Upin, Kelsey Nyland.

Measuring the long-term effects of climate change on the active and near-surface permafrost layers of the Arctic has taken Assistant Professor of Geography **Nikolay Shiklomanov** and a group of graduate and undergraduate students to Alaska every August since 2010. Through a five-year, \$1.7 million grant from the National Science Foundation (NSF), the field research is part of the global Circumpolar Active Layer Monitoring (CALM) project.

“The CALM project requires substantial annual field observations and experiments in remote Alaskan Arctic locations where researchers maintain an array of approximately 30 field sites,” said Shiklomanov. “Data are collected on the temperature, moisture content, and thaw depth of the active layer in permafrost regions of the Northern Hemisphere.”

Among those who have made the annual trek with Shiklomanov are post-doctoral scientist **Dmitry Streletskiy**, master’s candidate **Ellen Hatleberg**, and undergraduates **Kelsey Nyland** and **Elliot Upin**. Working with professors from the University of Delaware and the University of Montana—as well as researchers from the U.S. Department of Agriculture and NSF’s PolarTREC (Teachers and Researchers Exploring and Collaborating) program—the group probed the depth from the tundra ground surface to the permafrost, an area known as the active layer. The depth of this layer can impact the stability of infrastructure, future climate modeling, and exploratory oil-drilling regulation. Data were collected at sites near Nome, Prudhoe Bay, and Barrow, the northernmost city in the United States.

“This research is important because understanding changes at the small scale of the active layer helps us to understand current and potential changes at the large

scale of global environmental change,” said Hatleberg, who focused on the use of indices and geographic information systems to determine how permafrost coverage and other environmental factors relate to population density, health, and economics in the Arctic.

Back on campus, the students coordinated the inventory and dissemination of the data they collected in Alaska with other participants in the CALM project, which spans over 180 sites in remote areas of the polar region. Hatleberg and Nyland evaluated ground surface temperature for different permafrost landscapes and determined that the mean air temperatures are increasing, resulting in a longer period of thaw for the active layer. Their research was presented at the Association of American Geographers’ annual conference in Seattle in April.

“Being able to work in the field was a great experience,” said Nyland. “It was a chance to apply and relate to everything that I have been studying in class. I feel extremely fortunate not only to have gone to the Alaskan Arctic but also for the time we spent with other scientists on the team.”

Planet Forward

TV Special Spotlights Energy Innovation

What happens when you sort through hundreds of videos in search of the best new energy innovations? If you're Planet Forward, you find a start-up company that leases solar panels without a down payment.

That solar panel company, and others, saw the spotlight when Planet Forward—GW's online social network forum for ideas on energy, climate control, and sustainability—launched “The Energy of Innovation” on PBS in April.

Produced by Columbian College's School of Media and Public Affairs (SMPA), the television special singled out seven concepts from among hundreds of online video entries. The show's panel of experts—including former Michigan Governor Jennifer Granholm, *New York Times* “Dot Earth” blogger Andrew Revkin, and DuPont Chief Innovation Officer Tom Connelly—offered feedback to the studio audience, then selected one of two concepts to follow online for the next 12 months. The winning “Planet Forward Innovator” was Danny Kennedy, CEO and founder of Sungevity, for his business project that leases solar panels with no down payment. After the program aired on PBS, the at-home viewing audience and PlanetForward.org website visitors chose a second winning innovator, Jamie Hestekin, whose team at the University of Arkansas is building an algae-to-butanol machine to produce fuel.

“The promise of Planet Forward is to propel new ideas and new voices across new media,” said SMPA Director **Frank Sesno**, creator and host of Planet Forward. “Never in all my years of broadcasting have I been involved in an effort so focused on innovation, inquiry, and invention, where the entire program's content originated with game-changing ideas represented in person.”

Anyone, from students to government decision makers, can join the thousands of weekly visitors who submit ideas to the web-based community. Undergraduate and graduate students manage Planet Forward's social media outreach—with more than 6,000 Twitter followers—as well as production of its video projects, TV segments, and online content. Sesno teaches a multimedia class that contributes to the website.

“WHAT MAKES INTERNING WITH PLANET FORWARD SO EXCITING IS THAT IT'S TECHNOLOGICALLY ON THE EDGE.”

SARA SNYDER
POLITICAL SCIENCE JUNIOR



Frank Sesno on the Planet Forward TV set

Planet Forward curated a blog on National Geographic's “Great Energy Challenge” website, and video stories from member submissions have appeared on PBS' “Nightly Business Report.” *The Huffington Post* featured webisodes with energy experts from Planet Forward.

“What makes interning with Planet Forward so exciting is that it's technologically on the edge,” said **Sara Snyder**, a political communication junior interested in video production. “They do a lot of experimentation with new ways to tell stories, and it really pushes me.”

Planet Forward, part of SMPA's Center for Innovative Media, has attracted several GW partners, among them the Office of Sustainability and the GW Solar Institute as well as student organizations GreenGW and Food Justice Alliance. Also assisting with the multi-media endeavor are faculty members **Christopher Cahill** from the Department of Chemistry, and **David Rain**, **Melissa Keeley**, and **Lisa Benton-Short** from the Department of Geography.

Driving the Discussion, DISCOVERING NEW INTERESTS



GW Student Tori Kurtz bakes cookies with students at D.C.'s John Tyler Elementary School

Dean's Seminars are a popular part of the Columbian College first year undergraduate curriculum. These semester-long courses explore a range of thought-provoking and, at times, quirky topics meant to stir up robust classroom dialogue. Ever-evolving to stay current and fresh, the seminars enable Columbian students to partner with faculty and uncover new interests.

“The students have to do the heavy lifting,” said Professor of History and author of the award-winning book *Brotherhoods of History* **Eric Arnesen**, who taught last spring’s “Race, Employment, and Public Policy” seminar. “We talk about what they’re interested in, and I expect everyone to participate.”

The seminars are small, no more than 19 students, and “preaching from the pulpit” is not encouraged. In Arnesen’s course, 12 students pulled up their chairs around a long table, ready to drive the discussion about events leading up to the 1964 Civil Rights Act.

During one such discussion, students talked about the planned African American march on Washington in 1941 for equal employment rights. The march was called off at the last minute when President Franklin D. Roosevelt established the Fair Employment Practice Committee (FEPC). Did the formation of the FEPC change the course of history? Student **Emily Schutz** and others argued it did because it effectively postponed until 1963 the impact of tens of thousands of protesters converging on the nation’s capital to push for basic civil rights.

And what did the professor think? “Some say yes, others say no,” noted Arnesen during what turned into a lively debate—the norm for this seminar. “Although the FEPC possesses few enforcement powers, its creation symbolized the federal government’s unprecedented stance against employment discrimination and put the issue of employment discrimination on the political map.”

WHAT'S FOR LUNCH?

Across town, another non-traditional lesson was unfolding, this one in the lunchroom at John Tyler Elementary in southeast D.C. Associate Professor of Sociology **Ivy Ken's** service-learning course, "The Sociology of Food," took her students to the frontline of the national obesity epidemic.

"The project at Tyler Elementary was designed so that students could interact with school children, observe their lunchtime rituals, and assess the problems and victories that are actually going on there," said Ken, author of the book *Digesting Race, Class, and Gender: Sugar as a Metaphor*. (See *faculty books*, page 24.) "Most people understand that the food we eat has some basis in nature. But food is also social. The reasons why people eat miso soup for breakfast instead of calamari are sociological as much as they are ecological."

Through a grant from the GW Institute for Sustainability, Ken has conducted extensive research on sustainability-related practices of food-service management companies used by D.C.'s public schools. She linked the companies with the D.C. Farm-to-School Network to gain access to locally grown fruits and vegetables—the kind of foods rewarded by the D.C. Healthy Schools Act, which uses monetary incentives to improve student nutrition.

During the seminar, Ivy Ken's students studied the way elementary kids ate and thought about food. In a hands-on session, they taught the children how to crack an egg and make homemade cookies; in another, they demonstrated how to make lunch boxes of fruit, yogurt, and peanut butter.

"The kids loved the healthy fruits we brought in and were so excited to participate and learn about nutrition when we made food," said student **Riley Kirkpatrick**. "And I now have a much greater understanding of the agricultural industry in our country and the structure of the food industries."



Makwei "Joseph" Mabioor Deng

From Refugee to Student Author

IN an extraordinary journey that took him from a war-torn southern Sudanese village, to a Kenyan refugee camp, to GW student and book author, **Makwei "Joseph" Mabioor Deng** has overcome incredible odds. Now a senior majoring in philosophy and economics—and fresh off an internship with the World Bank—Deng has his sight set on law school and a return to his native country to help bring about change.

"Wars and conflicts are endemic in Sudan," noted Deng, who is attending GW through a scholarship from Banaa, the Sudan Educational Empowerment Network. "I want to replace the battlefield with the courtroom, guns and bullets with legal representation, and open confrontation with negotiation around the table."

Deng is GW's first Banaa scholar, thanks to the efforts of Class of 2008 alumni **Jeffrey DeFlavio**, **Evan Farber**, **Justin Zorn**, and **Neil Padukone**. After raising start-up funds, they began a Banaa Chapter at GW in 2006 as a constructive response to decades of violence and continued impoverishment in Sudan. Philosophy Professor **Paul Churchill** serves as the chapter's faculty adviser. There are now 29 Banaa chapters at universities across the country, and Deng, who was selected from a pool of 177 applicants, attends GW on a full scholarship.

Banaa seeks to end mass atrocities by training a new generation of "peacemakers." As a Banaa scholar, Deng is expected to return to the Sudan, commit to public service, and use his skills and resources to promote reconciliation and sustainable development. Deng got a head start on that commitment to his country with the publication of a lavishly illustrated book he wrote the summer after his freshman year.

Drawing on his experiences as a former teacher in refugee camps and motivated by the need to preserve the endangered language of the Dinka—his native tongue—Deng's book serves as both grammar guide and lexicon. Although spoken by some three million people, many of whom are pastoralists, there are few materials for teaching Dinka as a written language. The book is meant to help transition Dinka from oral words to a standardized written language.

"Advising and teaching Joseph has been truly inspiring," said Churchill, who is striving to bring Deng's book to the attention of linguists and cultural anthropologists. "I am extremely proud of the students and the administration for making it possible for the Banaa scholarship program to continue at GW."

A Question of Faith

New Books Examine the World's Major Religions



Are Jewish texts inherently violent or peaceful? How did Calvinists deal with the intellectual challenges of the Enlightenment? How has the ancient concept of Dharma evolved and developed over the past 2,300 years? What is the role of women in Islamic culture?

Five Columbian College professors make important contributions to our understanding of the world's great religions through a series of books published over the past year. Each serves to illuminate the underlying framework and development of Buddhism, Christianity, Hinduism, Islam, and Judaism.

“When taken as a whole, these books reflect a remarkable breadth of scholarship during a time when issues revolving around faith and one’s religious beliefs have become part of daily dialogue on a global level,” said **Dewey Wallace**, professor and former chair of the Religion Department. “This scholarship enriches the classroom experience and enhances the understanding of the world’s religions, past and present.”

Wallace’s book, *Shapers of English Calvinism, 1660-1714: Variety, Persistence, and Transformation*, explores the work of prominent and influential English Calvinist thinkers in the years immediately following the Restoration of the monarchy in 1660. He contests several conventional ideas about Calvinism, including beliefs that it was anti-mystical, rejected natural theology, and was harshly predestinarian. Wallace also questions whether Calvinism was eliminated from the Church of England by the end of the 17th century. Through careful examination of writings by theologians of the period, Wallace demonstrates the diversity and later influence of Calvinist thought and doctrine.

In *The Peace and Violence of Judaism: from the Bible to Modern Zionism*, Professor of Religion **Robert Eisen** provides the first comprehensive analysis of Jewish views on peace and violence. He examines the texts of five major areas of Judaism—the Bible, rabbinic Judaism, medieval Jewish philosophy, Kabbalah, and modern Zionism—and demonstrates how, throughout its history, Judaism has consistently exhibited ambiguity regarding peace and violence.

Professor of Religion and History **Alfred Hildebeitel’s** scholarship in Buddhism and Hinduism comes into focus in *Dharma: Its Early History in Law, Religion, and Narrative*, which investigates the implications of Dharma in politics, religion, law, literature, ethics, and philosophy. A concept central to Buddhism and Hinduism, Dharma is defined as natural law or a person’s moral calling. Hildebeitel’s in-depth analysis depicts Buddhism’s tendency to present Dharma as a type of civil discourse, challenging people to think critically, or at least more creatively, about their ethical principles and the foundations of their own spiritual values.

The repercussions of upheaval within the Islamic world are explored in *Islam in the Modern World: Challenged by the West, Threatened by Fundamentalism, Keeping Faith with Tradition* by **Seyyed Hossein Nasr**, University Professor of Islamic Studies. Nasr describes and defends traditional Islam against critics inside and outside the faith. He explores the religion and its global relevance with a focus on the West’s concerns about holy war, women’s roles in Islam, the rise of fundamentalism, and the future of Shi’ism in Iran.

Assistant Professor of Religion and Women’s Studies **Kelly Pemberton** also examines a facet of the Islamic faith in her book, *Women Mystics and Sufi Shrines in India*. She combines her

“THESE BOOKS REFLECT A REMARKABLE BREADTH OF SCHOLARSHIP DURING A TIME WHEN ISSUES REVOLVING AROUND FAITH AND ONE’S RELIGIOUS BELIEFS HAVE BECOME PART OF DAILY DIALOGUE ON A GLOBAL LEVEL.”

DEWEY WALLACE
PROFESSOR OF RELIGION

firsthand research on India’s Sufi shrines with historical data to investigate women’s participation in the Sufi orders. Pemberton reveals the ambiguities in Islam’s foundational framework for belief and practice by juxtaposing the religion’s explanations for why women cannot serve as spiritual masters with the Sufi cultural need for them to act as such.

Pemberton’s perspective, and that of her colleagues, reveals the breadth of knowledge used to engage students in the examination of the world’s religions. From the abstract to the concrete, faculty members are exploring with their students the difficult questions relating to culture, spirituality, and moral codes and the impact of each on today’s contemporary society.



GEOSCIENTIST RESEARCHES WAYS TO REDUCE GREENHOUSE GAS

Ecosystem disturbance and the battle to reduce greenhouse gases are unfolding on many fronts. One—the capture and storage of carbon dioxide (CO₂)—is the focus of research by **Henry Teng**, an associate professor of chemistry and geosciences and director of Columbian College’s Environmental Resource Policy Graduate Program.

Teng, a geochemistry specialist, studies the chemical makeup of natural environments, in particular, carbonate mineralization in the presence of other minerals. What he learns about the fixation process in natural environments can impact the feasibility of carbon sequestration, or the capturing of carbon dioxide for storage. For example, in carbon sequestration, CO₂ is collected as it comes out of an industrial smokestack and is “stored” by injecting or channeling it into geological formations.

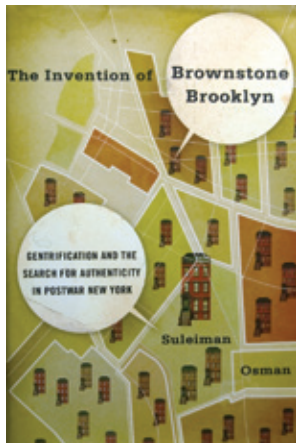
“As global warming gets more and more attention these days, carbon capture and sequestration research is quickly becoming an international effort,” said Teng. “Currently, I am collaborating with Chinese colleagues on carbon and mineral sequestration research so that CO₂ is not accumulated in the atmosphere.”

Teng and his research partners are exploring China’s CO₂ storage capability in the ultramafic and mafic rocks found in the Earth’s crust. They are also studying and designing an on-site mineral carbonation strategy to remove CO₂ from flue gas. China’s Ministry of Land and Natural Resources and the Ministry of Science and Technology are funding the research.

“The collaboration has been carried out mainly in China where there is a pretty big group—half a dozen students and three faculty members—working on it,” said Teng.

In addition to greenhouse gas mitigation, the Environmental Resource Policy Program engages students across disciplines on research involving combustion chemistry, urban environmental management, land-use planning, and the environmental services provided by urban vegetation, urban geography, economics and public policy, tax and fiscal analysis, and microeconomics. Armed with research grants from the U.S. Department of Energy and other agencies and based in a location where environmental policy is created, Teng believes the program is well positioned to train the next generation of leaders in environmental science.

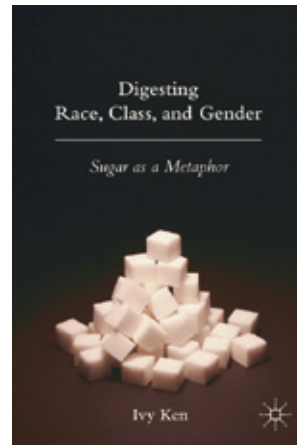
Selected NEW BOOKS by Columbian College Faculty



Invention of Brownstone Brooklyn

The transformation of Brooklyn from an industrial slum to a landscape of hip bars, yoga studios, and expensively renovated townhouses was one of the most striking developments in recent urban history. In *The Invention of*

Brownstone Brooklyn: Gentrification and the Search for Authenticity in Postwar New York, Assistant Professor of American Studies **Suleiman Osman** traces the origins of Brooklyn's gentrification to the cultural upheavals of the 1960s and 1970s. That era spawned a grassroots movement led by young white idealistic college graduates searching for "authenticity" and alternatives to the burgeoning suburbs. While postwar city leaders championed slum clearance and modern architecture, self-proclaimed "brownstoners" pushed a romantic urban ideal that celebrated historic buildings, industrial lofts, and traditional ethnic neighborhoods. Osman examines the emergence of a "slow-growth" progressive coalition as these brownstoners joined with poorer residents to battle city planners and politicians. But as more and more people migrated into poorer areas, race and class tensions emerged, setting up a debate that continues today about whether the transformation was a success or failure.



Digesting Race, Class, and Gender: Sugar as a Metaphor

How do we use race, class, and gender to organize our own lives and those of people around us? These organizing mechanisms both hinder and foster the social organization of society. *Digesting Race, Class, and Gender* seeks to illustrate

these identities through the same mechanisms of food production, mixing, and digestion. Just as one food shapes the molecular structure and sensory perception of another in both the field and in the mixing bowl, the "foods" of race, class, and gender are dynamically linked with one another and have implicit effects on the shape and framework of our social order. Instead of focusing on the understanding of race, class, and gender, this book, written by Associate Professor of Sociology **Ivy Ken**, focuses on the "digestion" and breakdown of these social elements within individuals and society.



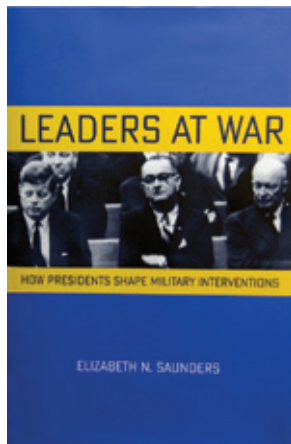
A Mathematical Look at Politics

There are many recent examples of the impact of mathematical thinking on the political world. Just look at Ralph Nader's spoiler role in the 2000 presidential election, the 1990 lawsuit that challenged the method for apportioning seats in the U.S.

House of Representatives, or the nation's unsuccessful application of game theory to the Cold War. These examples raise important questions about the American



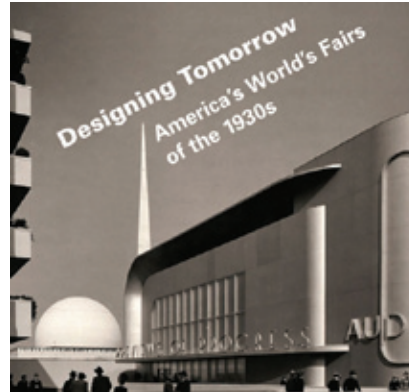
political system. In *A Mathematical Look at Politics*, Professors of Mathematics **Arthur Robinson** and **Daniel Ullman** seek to address these issues while providing students with a more interesting approach to learning quantitative reasoning. Students are asked to not only make computations but also to state results, prove them, and draw conclusions about specific examples. Tying the liberal arts classroom to real-world mathematical applications, the text is more deeply engaging than a traditional general education book that surveys the mathematical landscape. It aims to instill a fondness for mathematics in a population not always convinced that mathematics is relevant.



Leaders at War

One of the most contentious issues in contemporary foreign policy is the use of military force to intervene in the domestic affairs of other states. In *Leaders at War: How Presidents Shape Military Interventions*, Assistant Professor of Political Science and International Affairs **Elizabeth N. Saunders** provides a framework for understanding when

and why great powers seek to transform foreign institutions and societies through military interventions. She highlights a crucial but often-overlooked factor in international relations: the role of threat perceptions by individual leaders. These perceptions affect the degree to which leaders use intervention to remake the domestic institutions of target states. Using archival and historical sources, Saunders concentrates on U.S. military interventions during the Cold War, focusing on the presidencies of Eisenhower, Kennedy, and Johnson. After demonstrating the importance of leaders in this period, she also explores the theory's applicability to other historical and contemporary settings, including the post-Cold War period and the war in Iraq.



Designing Tomorrow: America's World's Fairs of the 1930s

In the midst of the Great Depression, America's World's Fairs of the 1930s gave hope to millions, sustaining attendees with visions of future progress. These grand expositions in Chicago, San Diego, Dallas, Cleveland, New York, and San Francisco showcased an optimistic, consumerist future society and symbolized the Modernist message of progress through design. *Designing Tomorrow* celebrates the influence and impact of these international expositions. Edited by Assistant Professor of Museum Studies **Laura Burd Schiavo**, the book offers an overview of the fairs and detailed discussions of individual works, including how designers reconciled radical "European" Modern style with American tradition. Essays by noted authors illuminate the ways in which Modernism became an integral component of the vocabulary of American design. The book also highlights the visual power of the expositions, featuring rare artifacts and photographs of objects, including models and plans for "the houses and cities of tomorrow," streamlined trains, modern furnishings, and the first televisions. *Designing Tomorrow* accompanied a first-of-its-kind National Building Museum exhibit curated by Schiavo.

Research Briefs

DIFFERENCES BETWEEN BRAINS OF HUMANS AND CHIMPS LINKED TO AGING

Chimpanzees, the closest living relatives to humans, diverge from humans when it comes to aging. They do not experience a decrease in brain volume as they get older like humans do, according to a recent study led by Associate Professor of Anthropology **Chet Sherwood**.

Researchers used magnetic resonance imaging (MRI) on a sample of 99 chimpanzee brains ranging from 10 to 51 years of age. They measured the volume of the whole brain and numerous specific internal structures. These data were compared to brain



Chet Sherwood

structure volumes in 87 humans ranging from 22 to 88 years of age. Measurements of the neocortical gray and white matter, frontal lobe gray, and white matter and the hippocampus—the area responsible for encoding new memories and maintaining spatial navigation—were performed.

“Although other animals experience some cognitive impairment and brain atrophy as they age, it appears that human aging is marked by more dramatic degeneration,” said Sherwood. “What’s really unusual for humans is the combination of an extremely long life and a large brain. While there are certainly benefits to both of these adaptations, it seems that more intense decline in brain volume in the elderly of our species is a cost.”

ASSESSMENT FACTORS MAY IMPACT ESTIMATES ON AUTISM NUMBERS

Autism may be more common worldwide than current figures suggest—mostly because of cultural factors that may affect diagnostic practices and prevalence estimates, according to a study by Professor of Anthropology and International Affairs

Richard Grinker and researchers from Yale University.

Funded by Autism Speaks in partnership with Columbian College’s Institute for Ethnographic Research, the study revealed that 2.6 percent of children ages 7 to 12 in a South Korean community had autism, equivalent to 1-in-38 children.

Unlike studies carried out by the Centers for Disease Control and Prevention, which analyzed records and registries, the researchers attempted to assess each child in every school, even those who did not have a record of any diagnosed special education need. This method unmasked cases that could have gone unnoticed by epidemiologists relying on a records-based approach.

“While this study does not suggest that Korean children have more autism than other populations or that a more accurate rate for the U.S. is closer to 2.64 percent, it does suggest that autism may be more common than previously thought,” said Grinker. “This research powerfully demonstrates that the methods one uses to study prevalence will profoundly influence the estimate.”



Guillermo Orti in South America

A PASSION FOR FISH

Guillermo Orti’s passion for fish—in particular the evolution of the piranha and its myriad species—has led him to explore remote regions of the world, including the Brazilian Amazon. Highlights of his most recent trip into the rainforest aired in May on the National Geographic Channel in a TV special about the mega-piranha, a creature that existed millions of years ago.

The specimens collected on this expedition and others open the door to years of analysis by Orti, a Louis Weintraub Associate Professor of Biology, and other researchers. Orti’s work is part of the massive, multi-institutional Tree of Life initiative funded by the National Science Foundation to decipher and map the evolutionary relationships among all 1.7 million species of life on earth. In examining the evolution of piranhas and other fish, Orti focuses on the structure of their DNA molecules, a process called molecular systematics. His expeditions in South America—piranhas only live east of the Andes—involve collecting and dissecting thousands of fish.

"We know there are a lot of species that haven't yet been described in this region," said Orti. "We're collecting everything we can put our hands on. It's estimated there are about 80 species of piranha, but the expeditions also collect hundreds of other types of fish.

ONLINE LOCAL NEWS LESS POPULAR THAN PERCEIVED

Online local news sources are not filling the void created by shrinking newspaper organizations, according to "Less of the Same: The Lack of Local News on the Internet," a study by Assistant Professor of Media and Public Relations **Matthew Hindman**. The report disputes the assumption that online outlets have expanded the amount of local news coverage beyond that of traditional newsrooms. Most local online outlets are outposts of newspapers and television stations and traffic to these sites is relatively small compared to that of national news sites.

"Understanding the local news landscape online has profound implications for policymakers, journalists, and local self-governance in the 21st century," said Hindman, whose report was based on web traffic data from comScore, an Internet marketing research company. The data examined the 100 largest U.S. broadcast markets.

\$1.92 MILLION GRANT TO ADVANCE WORK IN NUCLEON RESONANCE

The GW Institute for Nuclear Studies Data Analysis Center, part of the Columbian College, has been awarded a three-year renewal grant of \$1.92 million from the Department of Energy (DOE) Office of Nuclear Physics. The award, which is nearly double the previous three-year amount and the highest single principal investigator research grant in DOE's Medium Energy Program, will fund the institute's ongoing work in nucleon resonance phenomena.

Resonance is the effect of adding a precise amount of energy to a system to raise it to a higher energy state. Because quantum physics dictates that nucleons are wave-like, they have a set of resonant frequencies that may be excited like more familiar objects, such as a guitar string. The harmonic frequencies of a guitar string are determined by



the material from which the string is made. Similarly the harmonic frequencies of a proton are related to its constituents. Exciting those harmonics provides a wealth of information about its structure and reaction properties.

Much is understood about neutrons and protons, together called 'nucleons', which make up most of the visible matter of the universe. But a description of nucleons in terms of their constituents (quarks and gluons) remains incomplete. Using advanced techniques of experimental, theoretical and phenomenological nuclear physics, the institute's team of researchers—led by Professor of Physics **William J. Briscoe**—has made significant progress in understanding the phenomenon of nucleon resonance. Their work is part of a renaissance in nuclear reaction theory, ushered in by a new generation of operating and planned precision experiments.

TECHNOLOGY TO ANALYZE BODY MOLECULES GOES COMMERCIAL

GW's Vertes Research Group, led by **Akos Vertes**, professor of chemistry, biochemistry, and molecular biology, is collaborating with Protea Biosciences, a leading developer of new bioanalytical

technology, to offer the industry's first commercial bioanalytical services using laser ablation electrospray ionization mass spectrometry (LAESI-MS) technology.

Invented and developed by Vertes, founder and co-director of GW's W.M. Keck Institute for Proteomics Technology, LAESI-MS is a breakthrough technology used for identifying proteins, peptides, lipids, metabolites, and other biomolecules directly from cells, tissues biofluids, and any other sample that contains water content. This technology has the potential to support a broad range of applications in the fields of pharmaceutical and biological research, surgical and molecular pathology, clinical diagnostics, chemical and biological defense, forensics, agriculture, food process monitoring, and many others.

"When new drugs are developed, the company, as well as the regulators, needs to know where in the human body the pharmaceutical candidate and its breakdown products end up," said Vertes. "This process is known as the absorption, distribution, metabolism, and excretion (ADME) analysis. Because LAESI-MS can quickly and directly analyze very small samples of bodily fluids, as well as directly image tissue samples, it is ideal for performing ADME analysis."

Lotto Winners Donate \$1.1 Million to Fund Scholarships for Political Science Students

The Gift of Education

After winning California's MEGA Millions jackpot lottery last year, political science alumnus **Gilbert Cisneros**, BA '94, and his wife, Jacki, are giving back with a \$1 million gift to establish a need-based scholarship endowment for Columbian College undergraduate students, and an additional \$100,000 to GW's Yellow Ribbon Program in support of veteran education.

"We are delighted that Gilbert has decided to give back to his alma mater through the Cisneros Scholarship Fund," said Columbian College Dean **Peg Barratt**. "He and Jacki have translated their good fortune into a generous gift that will help generations of students to achieve their academic dreams. On behalf of those who will benefit, I applaud their thoughtful philanthropy."

In creating the scholarship endowment, the Cisneros' specified that preference be given to students majoring in political science who have a demonstrated interest in Hispanic history and culture. Their goal: to give students who are in financial need the same educational opportunities that they enjoyed.

"This is something that I always dreamed of being able to do if I got the chance," said Cisneros, who also serves on the Dean's National Council for the Arts and Sciences. "It's great to be able to give some students . . . the chance to study politics in the heart of the nation's capital."

"My husband is Hispanic and I'm half-Hispanic, so we wanted to help create more opportunities for those students," added Jacki Cisneros. "We had always talked about the stuff that we would do if we ever could, and it seems fitting to give back now that we're able to. For us, it's about being able to make a real difference."

The couple's additional \$100,000 gift to the Yellow Ribbon Program was inspired by Gilbert Cisneros' military service. He received a scholarship to GW through Navy ROTC and served in the U.S. Navy for 10 years as a supply corp officer.

The couple will continue to support educational initiatives through the Gilbert and Jacki Cisneros Foundation. The new foundation seeks to improve the chances of students attending college by reaching out to them at the middle-school level.

"These gifts are just part of an ongoing process," Gilbert Cisneros said. "We've had this great gift bestowed upon us and we feel blessed to be able to turn around and help others. Education can be a life-changing experience that no one should miss."



Gilbert Cisneros, BA '94,
and his wife Jacki Cisneros

Jerry and Judy Nadler now
and in their 1974 *Cherry Tree*
yearbook photo



STILL CRAZY (FOR GW AND EACH OTHER) AFTER ALL THESE YEARS

For the Nadlers, It's All about Giving Back

It started with a date to watch the lighting of the National Christmas Tree. Forty years later, the GW grads—long married to one another—were back on campus. Since graduating from Columbian College in 1974, **Jerry** and **Judy Nadler** have carved out successful careers, raised a family, and become active donors and volunteers at their alma mater. Earlier this year, the California residents returned to revisit the site of their first date, lunch with Columbian College Dean **Peg Barratt**, and talk about what makes them such strong advocates of the GW experience.

“It feels like we’re coming home,” said Jerry at the time of the visit. “We can’t remember what we had for breakfast, but we remember vividly the things that what we did in college.” On campus, Jerry Nadler and the former Judy Shasky worked together on GW’s *Cherry Tree* yearbook. Jerry served as co-chair of the Columbian College Faculty-Student Council, created the Resident Hall Association, pushed a referendum to reinstate student government, and sat on the committee to design the Charles E. Smith Center.

“There’s not much difference between college politics and real politics,” said Jerry, now a superior court judge in Santa Clara. “Those four years in student politics really helped me cut my teeth on how the process works. The heated debate with faculty and students dealing with nepotism and cronyism . . . it all was a great experience for later in life.”

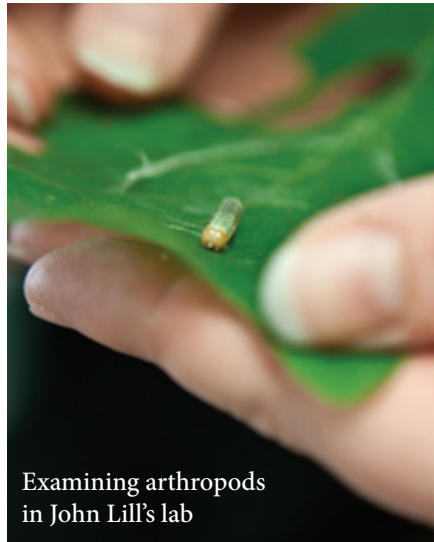
Judy joined the Kappa Alpha Theta sorority and created a program that paired student mentors with new students from or near their hometowns. The mentors showed students around campus, much like the present day Colonial Inauguration experience. Off-campus, Judy took advantage of GW’s connections with D.C. institutions. A journalism and public policy student, she interned on Capitol Hill, at National Geographic, and with consumer advocate Ralph Nader and Chairman of the House Ways and Means Committee Al Ullman (D-OR).

“When I graduated, I had a resume,” she said. That resume helped her as a student at Harvard’s John F. Kennedy School of Government and again when she kicked off a successful career as a journalist. In recent years, she served as mayor of Santa Clara and is now a senior fellow in government ethics at Santa Clara University.

Through it all, the Nadlers have remained committed to Columbian College and GW. They participate in alumni events and help recruit West Coast students to attend their alma mater. And they contribute to the university’s Annual Fund and the Ron Howard Fund to support students and programs.

“GW is, and will always be, a very special place in our hearts and minds,” said Jerry. “Our education and internships have shaped our careers.”

“If you want to sit around in your dorm, I suggest you go to another university,” added Judy. “Anything you want to do you can do here, from politics and journalism to the arts and health. It truly is a complete education.”



Examining arthropods
in John Lill's lab



Kevin Doré gets up close and
personal with sea urchins.

Alumnus' Philanthropy Looks to New Generation of Scientists

Harlan Trust's Initial \$1.35 Million Gift Enhances Biology Programs

Activity on university campuses usually slows a bit during the lazy days of summer. That was not the case in GW's Bell Hall where, during the record heat wave, you would have found senior biology majors **Stephanie Spivack** and **Kimia Ramezani** peering through a microscope while injecting flies with bacteria; junior **Kevin Doré** reaching into an aquarium of spiny sea urchins for his research on serotonin receptors; and PhD students **Jesus Ballesteros**, **Thiago Moreira**, and **Ligia Benavides** describing new species of spiders and constructing evolutionary trees.

They were part of a group of biology students on summer research stipends thanks to the Wilbur (Bill) V. Harlan Scholarship Trust, which was established in 2009 through a \$9 million bequest from his estate. Harlan, who died in 2006, received a bachelor's degree in botany from GW in 1935 and briefly served as a lab instructor in the department. (Botany is now part of the Department of Biological Sciences.) The Harlan Trust provided an initial \$1.35 million gift last fall to support the construction of a state-of-the-art greenhouse in the new Science and Engineering Hall (*see story, page 4*) and fund merit-based scholarships for biology students. The summer stipends are also funded through the trust.

"These students are the next generation of scientists," said **Diana Lipscomb**, chair of the department and the Robert L. Weintraub Professor of Biological Sciences. "The research experience gives our undergraduate and graduate

“BILL HARLAN WAS AN ACCOMPLISHED MAN WHO NEVER FORGOT HIS YEARS AT GW.”

DIANA LIPSCOMB
PROFESSOR OF BIOLOGICAL SCIENCES

students a connection to how new knowledge and theories are created, and projects often result in published articles by students in scientific journals or presentations at major scientific meetings.”

Working with faculty advisers, students conducted research on topics ranging from the molecular biology of diabetes to the ecological interaction between plants and the insects that feed and live on them.

Junior **Ariel Stein**, for example, worked with Louis Weintraub Associate Professor of Biology **Guillermo Orti** on the evolution of catfish in fresh and salt waters, comparing DNA strands of Australian samples. She delved into the Smithsonian Natural History Museum’s fish collection—which boasts more than 19,000 specimens—and spent many of her summer days inside the museum’s warehouse extracting samples from catfish indigenous to different waters around the globe.

“Catfish are extremely diverse morphologically and molecularly,” said Stein. “Through our research, we hope to understand more about their lineage.”

In D.C.’s Rock Creek Park, **Michelle Sliwinski**, a junior majoring in biology and minoring in political science, collected white oak leaf samples while researching the effects of forest fragmentation size on the diversity of leaf-tying caterpillar species and the greater arthropod community. Back on campus, in Associate Professor of Biology **John Lill’s** lab, Sliwinski raised caterpillars and moths to study their behavior in a controlled setting. She shared lab space and worked in tandem with two PhD students: **Elisha Sigmon**, who researched the interactions of insect communities living on plants, and **Mariana Abarca Zama**, who explored the impact of global warming on the life cycle of butterflies and moths.

Other summer projects included junior **Jeremy Carroll’s** examination of honey bee health as it relates to toxic agents; senior biology major **Sarah Palsen’s** examination of how cells heal wounds; and research by graduate students **Karen Poole** and **Jordan Chapman** who work with Associate Professor of Biology **Catherine Forster** on ornithopod dinosaur’s functional anatomy and feeding biology.

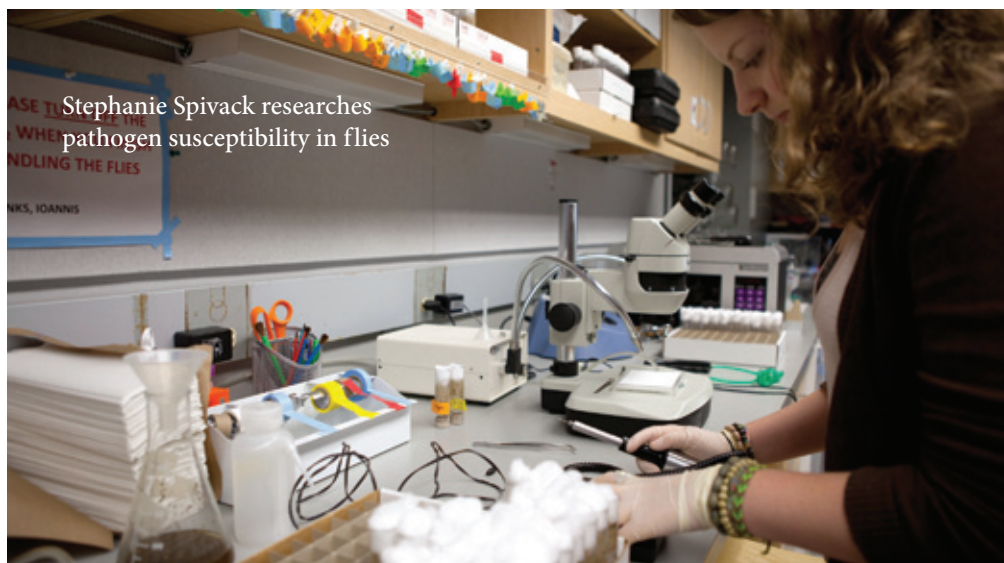
“The Harlan students certainly added to the vibrancy of the research environment in the Biology Department this summer,” said **Robert Donaldson**, undergraduate advisor and professor of biology. “Because of their in-depth experience with the techniques, concepts, and field research,

many of them will continue to work on their projects in upcoming semesters.”

As to Bill Harlan, he began a career teaching English in Kabul, Afghanistan, in 1938 at the advice of his former botany professor. During World War II, he served as an instructor and a medical officer in Asia. He later became an agricultural specialist with the U.S. Department of Agriculture, which provided him the opportunity to reside in Bolivia, Ecuador, Turkey, and Honduras. After retiring, he continued his travels and lived in Europe for nearly 10 years. In 2001, he wrote *Looking Back at My Life*, a memoir of his remarkable life.

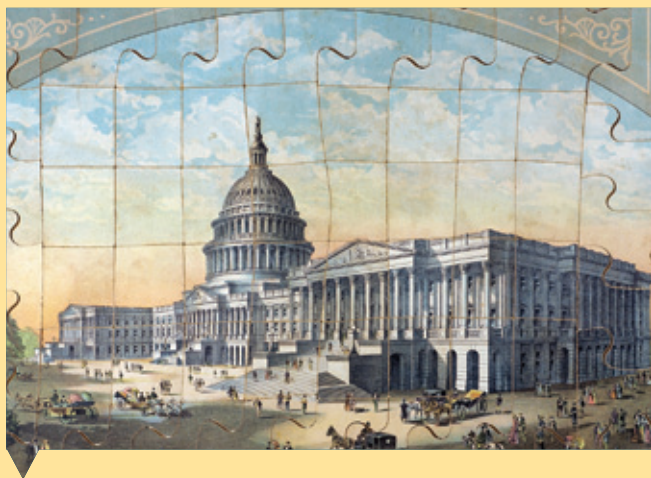
Partnered with his commitment to give and his life-long interest in science, Harlan’s strong belief in the power of education motivated his bequest to fund scholarships.

“Bill Harlan was an accomplished man who never forgot his years at GW,” said Lipscomb. “As a department, we are so grateful for his foresight in ensuring today’s students also get immersed in biological research and have the opportunity to explore the natural world using cutting-edge scientific methods.”



Stephanie Spivack researches pathogen susceptibility in flies

Briefs



A GIFT OF HISTORIC SIGNIFICANCE

Albert H. Small has donated to the university his unparalleled collection of memorabilia documenting the rich history of Washington, D.C. The Washingtoniana Collection—which includes maps, letters, rare books, drawings, prints, and photographs—will be permanently displayed in the 156-year-old Woodhull House adjacent to the to-be-constructed GW Museum on the Foggy Bottom Campus. An additional \$5 million gift from Small will support the renovation of the Woodhull House and construction of the new museum. In addition to the general public, faculty and students involved in the study of history, geography, and American studies will particularly benefit from this remarkable collection of artifacts.

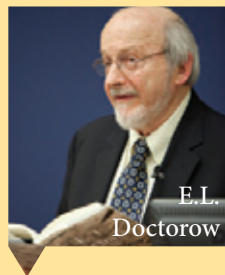
ALUMNI RECOGNIZED FOR OUTSTANDING ACHIEVEMENT

The Alumni Achievement Award is the highest form of recognition given by the university and the GW Alumni Association to alumni on an annual basis. Recipients are recognized for their lasting impact on society through outstanding professional, voluntary, or philanthropic accomplishments. Among the five recipients chosen this year from a field of more than 50 nominees, three received degrees from Columbian College. They are:

- **Sherri Rose**, BS '05, NSF mathematical sciences postdoctoral research fellow and author (recipient of the Recent Alumni Achievement Award);

- **Leonard Wartofsky**, BS '59, MS '61, MD '64, MPH '95, chairman of the Department of Medicine at the Washington Hospital Center; and
- **Mary Margaret Whipple**, MA '69, Virginia state senator, 31st District.

The other 2011 recipients are **Roslyn Brock**, MS '89, chairman of the National Board of Directors for the NAACP; and **Bruce Sewell**, JD '86, senior vice president, general counsel, and secretary of Apple, Inc.



DOCTOROW'S VISIT BRINGS LITERATURE TO LIFE

Jewish Literature Live, a unique course that brings prominent Jewish American authors to the classroom to interact with students, snagged another award-winning writer to lead a class discussion: Pulitzer Prize finalist E.L. Doctorow. Established in 2009 through the generosity

of English alumnus **David Bruce Smith**, BA '79, Jewish Literature Live also hosted visits by literary critic Adam Kirsch and novelist Steve Stern, among others. "One of the beauties of the course is that each author's visit brings an entirely new experience to everyone involved," said Professor of English Faye Moskowitz, MA '79, a prominent author in her own right.

ENDOWED SCHOLARSHIP HONORS BELOVED CHEMISTRY PROFESSOR

An endowed scholarship named in memory of the late **David Glover White**—a beloved professor and graduate student advisor in the Department of Chemistry from 1953 to 1994—has been established by the estate of his wife, Majorie W. White, who died in 2010. The bequest, which exceeds \$725,000, will support graduate chemistry students in recognition of David White's dedication to his students. "Our department is quite honored by this gift in memory of our esteemed colleague," said **Michael King**, chair of the Department of Chemistry. "David was a caring teacher and strong



advocate for our graduate program. Given the care and diligence that he expended advising and administering to the needs of our graduate students, it is most appropriate that he be remembered with this legacy."

BEQUEST TO ADVANCE WOMEN'S STUDIES

Clara Schiffer, MA '39, a tireless advocate for women's rights who passed away in April 2009 at the age of 97, left a \$100,000 bequest to Columbian College's Women's Studies Program to create The Clara Schiffer Project on Elder Women and Health Care Policy. The gift will support a visiting scholar and a Clara Schiffer Fellow each year for three years.

"Her generosity will make it possible for our students and scholars to continue making a difference in the lives of women and girls," said **Daniel Moshenberg**, director of the Women's Studies Program and associate professor of English. "That was Clara's daily ambition and it is a part of her legacy. She was a woman of unwavering determination and compassion in the area of social and legal rights for women—a true change maker."

ALUMNUS HONORS FATHER WITH CONCERT SERIES

Inspired by his father's love of music, **Peter Yeskel**, BA '71, an emeritus member of Columbian College's National Council for Arts and Sciences, has established a fund to support a concert series hosted by the Department of Music. Stanley Yeskel, who died in 2002, enjoyed playing the piano; however, he never had the opportunity to pursue music professionally. "It would make my father smile if he thought he was helping kids do what he was unable to do," said Peter Yeskel. The first Stanley Yeskel Memorial Concert performance took place this fall when Lithuanian pianist Ieva Jokubaviciute came to GW to perform—playing on a new Steinway piano given to the university by an anonymous donor. Another concert will be held this spring when violinist Miranda Cuckson comes to perform in Jack Morton Auditorium.



FELLOWSHIP MEMORIALIZES PIONEER IN SPEECH TECHNOLOGY

Harriet Green Kopp (1917-2007) was a pioneer in the development of visible speech technology to assist deaf individuals with their communications skills. In honor of Kopp's memory, her niece, **Kathryn Green**, BA '77—a member of Columbian College's National Council for Media and Public Affairs—has established the Harriet Green Kopp Graduate Fellowship in Speech and Hearing Sciences through a generous gift. The fellowship supports an annual award in the Department of Speech and Hearing Sciences for graduate students planning to work with deaf and hard-of-hearing clients.

ALUMNI MEET \$100,000 DONOR CHALLENGE

The closing days of 2010 brought great news with regard to alumni giving. Thanks to the generosity of more than 9,000 alumni during the

calendar year, the university surpassed its end-of-the-year alumni donor challenge and received a \$100,000 matching gift from an anonymous alumnus. The donation was designated to support the Power & Promise Fund, a university-wide fundraising initiative to provide financial aid for undergraduate and graduate students. The successful challenge illustrated the collective power of gifts, no matter the size, in making a difference in the lives of students.

FIVE COLUMBIAN COLLEGE ALUMNI JOIN BOARD

Five Columbian College alumni—**Vikram Bakhru**, BA '01; **Jacqueline Hackett**, BA '08, MPP '10; **Joshua Hiscock**, BA '03; **Hsiao Liu**, BA '98; and **Lloyd Winans**, BA '83—have been named to the GW Alumni Association Board of Directors. The board works collaboratively with the Office of Alumni Relations to engage fellow alumni and create a culture of support through service and philanthropy.

What is Happiness?

Webster's dictionary defines happiness as a "state of well-being and contentment." But what exactly is that state of well-being? Columbian College faculty members representing a cross section of disciplines were asked to define what happiness means to them. Here's how they responded.



"Happiness is an energizing state of well-being that empowers a person to undertake good works in the world. For me, happiness stems from enjoying a close, loving relationship with my children, other loved ones, friends, students and colleagues, and making useful contributions to them and to our broader community. My hope is that happiness is contagious and that the composite of our useful contributions enriches the lives of people in communities across the world."

*Kathryn Newcomer
Director, The Trachtenberg
School of Public Policy and
Public Administration*



"Happiness is the absence of regret, acceptance of how matters are, finding that the things you have to do are the things you'd want to be doing anyway. Good family, good food, a Scrabble board, a soccer ball, making music or mathematics with friends."

*Daniel Ullman
Professor of Mathematics
Associate Dean for
Undergraduate Studies*



"A critical component of *happiness is* a strong sense of fairness, justice, and equitable access to whatever amenities—tangible or intangible, psychological or concrete—that are generally available in a community. In the book *The Spirit Level*, the authors examine various measures of well-being (e.g. mental and physical health, educational performance, crime rates) in the U.S. and in other developed western nations. They found that income level does not impact these measures but inequality is a major predictor. That is, it is not the absolute level of money and other resources that determine well-being; rather, it is unequal distribution of them. Given these dynamics, the increasingly imbalanced distribution of income and wealth over the past 30 years among industrialized nations suggests that levels of happiness have not improved much, if at all. And, the increasingly acrimonious nature of our politics may be symptomatic of rising discontent."

*Gregory Squires
Professor of Sociology and of
Public Policy and Public
Administration*



“In many of the world’s religious traditions, *happiness is* focused less on how one feels and more on how one acts and perceives the world. Typically, the first step toward happiness is the recognition that perceptions do not represent ultimate reality. The second step comes from living in accordance with the true reality that one has discovered (or that has been revealed). In the western religious traditions of Judaism, Christianity, and Islam, this means living according to the will of a just and merciful deity rather than according to societal practices or one’s own desires. For example, the earliest Christian writings describe those who are happy as those who are merciful, who make peace, who are pure of heart, and who stand up for justice.

These traditions—whether we are religious or not—teach us that the mania of everyday life does not necessarily represent the entirety of our reality. We should periodically step back, reflect on our true values and those things that really matter to us, and live accordingly. Viewed in this way, happiness is not a warm and fuzzy feeling but instead a way of living one’s life.”

Paul Duff
Professor of Religion



“*Happiness is* the ability to self-actualize, to move forward without fear. The first day of every class I teach, I ask my students to visualize their greatest dreams. I then go on to say that no dream becomes a reality without first letting go of fear—the fear of familial and societal judgment, the fear of failure, the fear of loss, the fear of the unknown. To me, happiness is that joyous leap of faith that propels us beyond doubt in order to live out our desires.”

Dana Tai Soon Burgess
Chair, Department of
Theatre and Dance



“*Happiness is* sitting at the kitchen table with my wife, reflecting on a day of hard work, saying goofy things, leaving cares behind for the evening, cracking open a good bottle of wine, and deciding which episode of NCIS we’ll watch. I’ll refrain from defining it; I’d rather just embrace it.”

Christopher Cahill
Professor of Chemistry



“Being a student of 18th-century literature, I thought immediately of Samuel Johnson’s *Rasselas*, in which the prince leaves his pampered and stultifying life in the Happy Valley to search the world for true happiness. Everywhere he goes, his initial conviction that he has at last found the secret becomes another disillusionment. The party people in Cairo are masking mindlessness with performative cheer; the rich landowner says his appearance of happiness is delusive, for he lives in fear of jealous competitors; the happy hermit suddenly resolves to return to society; neither the married nor the single are happy because ‘marriage has many pains, but celibacy has no pleasures.’ Eventually, the prince and his party return to Abissinia, determined to make their own happiness. So perhaps that’s the answer: *happiness is* what you make for yourself and give to others, being neither situational nor a given, neither an entitlement nor a permanence.”

Tara Wallace
Professor of English
Associate Dean for
Graduate Studies



“In many ways, this is a strange time to be ruminating about *happiness* because of what’s happening in the world around us: global economic upheaval, soaring unemployment, famine, war, and civil unrest among an underclass that feels systemically dispossessed. But, then again, perhaps this is the perfect time to engage in a conversation about redefining happiness altogether.

In her 2011 Commencement address at Rutgers University, Nobel Prize Laureate Toni Morrison challenged young people to reshape their dreams of individual happiness into visions of collective well-being: ‘I know that happiness . . . informs your choice of companions, the profession you will enter, but I urge you: please don’t settle for happiness. It’s not good enough. . . [for] personal success devoid of meaningfulness, free of steady commitment to social justice—that is more than a barren life, it is a trivial one. It’s looking good instead of doing good.’

Like Morrison, I suggest happiness become a synonym for a commitment to the work of justice. It is that work that makes all other sources of happiness—love, children, a good book, dancing, a walk in the woods just as the autumn leaves are peaking—sources that are both ordinary and extraordinary, that much richer.”

Jennifer James
Director, Africana Studies Program



“*Happiness is* having work to do that I enjoy and that brings value to other people’s lives. That and having the love of family and friends makes me happy. Also, as an avid horseback rider, I believe Winston Churchill said it best: “There’s something about the outside of a horse that is good for the inside of a man.””

Randall Packer
Professor of Biology
Associate Dean for Special Projects



“This is an inquiry into the very nature of human reality because one must have experienced *happiness* in order to be able to define it. However, as Plato noted, to believe one is happy is not the same as actually being happy. Appearances are often belied by reality. Over the centuries, the question of happiness has spawned much debate among philosophers. For example, is happiness a qualitative or quantitative phenomenon or perhaps some mixture of the two? While early utilitarians, such as Jeremy Bentham, argued that “units of happiness” could be ascribed to different types of activities that result in pleasure or pain (more pleasure = more happiness, more

pain = more unhappiness), his successor, John Stuart Mill, insisted that happiness requires qualitative analysis, for ‘it is better to be a human being dissatisfied than a pig satisfied.’ Mill suggested that Socrates’ lifelong search for truth and knowledge, even if ultimately unfulfilled, yields a genuine, lasting form of happiness that can’t be compared to the more fleeting, sensory happiness of the pig (or person) who has just enjoyed a good meal. In my opinion, the qualitative vs. quantitative debate is a lot like the nature vs. nurture discussion, with the best answer acknowledging the importance of both factors.

Hence, the type of happiness one is experiencing matters, but so does the amount of happiness one attains in life. The most fortunate of individuals are those who achieve happiness in the many different facets of their lives: through caring relationships with family, friends, and the larger community, through pursuit of the most lofty as well as the most mundane of daily activities, through achievement of both short-term and long-term personal and professional goals, and through the knowledge one acquires of the meaning of life along the way.

Gail Weiss
Chair, Department of Philosophy



“There can be no doubt, *happiness is* floating in the ocean.”

Ivy Ken
Associate Professor of Sociology



“Many things might make me happy—an encounter with a beautiful painting or precious object, a belly laugh courtesy of Tina Fey, my first kiss in 6th grade, my daughter’s smile,

seeing an old friend for the first time in many years—but all in all, I’ve found lasting happiness to be a rather elusive state. Life today is too often marked by death, disappointment, and uncertainty. I see myself as a positive, optimistic person but to me, *happiness is* something so precious and so infrequent that I cannot quantify it in a few words. However, I do savor the rare occasions when I truly experience it.”

Kym Rice
Director, Museum Studies
Graduate Program

PRIDE

Shop the GW Bookstore
for the best selection of
alumni apparel & gifts!

GW Bookstore

Marvin Center | 202-994-6870

www.gwubkstr.com

0122BBS091611A

COLUMBIAN COLLEGE T-SHIRTS ARE ALSO NOW AVAILABLE!



*Dear Columbian College Alumni, Parents,
Friends, Faculty, and Staff:*

As the new chair of Columbian College's National Council for Arts and Sciences, I am honored to recognize the philanthropy of our College community.

There are countless ways your gifts, both small and large, are making an impact on every facet of the university experience. The donor-assisted Dean's Fund, for example, supports special faculty projects, graduate capstone courses, freshmen Dean's Seminars, and undergraduate research fellowships. Gifts to endowment ensure faculty excellence, student scholarships, and program enhancement. And many of our new initiatives, such as Planet Forward and the GW Capitol Archaeological Institute, are in existence today because of donor support.

It is, therefore, with much appreciation that I acknowledge each of the individuals and organizations listed in this Honor Roll of Donors, which recognizes those who have supported Columbian College during the GW fiscal year of July 1, 2010, to June 30, 2011. Your commitment to the advancement of the College will make a difference for generations to come.

Sincerely,

Pamela Lawrence, BA '76
Senior Vice President, North Shore Medical Center

STAY CONNECTED!

ALUMNI ARE AN IMPORTANT PART OF THE GEORGE WASHINGTON UNIVERSITY COMMUNITY. Don't

miss out on all the great programs and benefits that GW and Columbian College offer, including:

News and special announcements from the Columbian College and your department

Invitations to Columbian College and university-wide events like professorial lectures, GW Culture Buffs, and networking nights

Details on new and existing benefits available to GW alumni, including the Alumni Course Audit Program and Alumni Travel Program with GW and Columbian College faculty

Visit alumni.gwu.edu for more information on all of our alumni programs and events and be sure to update your contact information at alumni.gwu.edu/update.



L'ENFANT SOCIETY

The L'Enfant Society is named for the architect of the city of Washington, Pierre-Charles L'Enfant, whose vision guided its growth. The most prestigious of GW's gift societies, the L'Enfant Society recognizes donors whose generosity and foresight have a transformational and enduring impact on GW. Membership is extended to individuals, corporations, and foundations with annual or cumulative giving totals of \$5,000,000 or more. The following L'Enfant Society members are donors to the Columbian College of Arts and Sciences.

Gail and Philip Amsterdam+
J. B. & Maurice C. Shapiro Charitable Trust
Charles E. Smith Family Foundation+

Robert H. Smith Family Foundation+
David Bruce Smith+
Robert H. Smith*+

1821 BENEFACTORS

Established in 2004, this society was named in honor of the year the university was founded and embodies both the spirit of GW and the spirit of private philanthropy. Membership is extended to individuals, corporations and foundations with annual or cumulative giving of \$1,000,000 or more. The following 1821 Benefactors members are donors to the Columbian College of Arts and Sciences.

- | | | | |
|--|---|--|--|
| Anonymous
ARCS Foundation, Inc.+
B. Jay Baraff, Esq.
The Henry Luce Foundation, Inc.
Grace M. and
Morton A. Bender
Luther W. Brady, Jr., M.D.
Gilbert Cisneros, Jr., and
Jacki Cisneros+ | Amitai Etzioni+
Howard Hughes
Medical Institute
Jenny McKean Moore Fund
for Writers
John D. and Catherine T.
MacArthur Foundation
Juvenile Diabetes Research
Foundation International | Larry King
Theodore N. Lerner, Esq.,
and Annette M. Lerner
Mary J. and
Thaddeus A. Lindner
Lockheed Martin Corporation
Lucille P. Markey
Charitable Trust
Midge F. Smith | The Alfred P. Sloan Foundation
The Communitarian Network
The Ford Foundation
The Richard Eaton
Foundation, Inc.+
W.M. Keck Foundation
Albert Wang
Wilbur V. Harlan
Scholarship Trust |
|--|---|--|--|

GEORGE WASHINGTON SOCIETY

The George Washington Society was named to honor the forward-thinking spirit of the university's namesake, whose vision has guided GW's growth. Membership in the George Washington Society is extended to alumni and friends whose annual or cumulative giving totals \$500,000 to \$999,999. Grandfathered members with lifetime giving over \$100,000 are included. The following George Washington Society members are donors to the Columbian College of Arts and Sciences.

- | | | | |
|---|---|--|---|
| Carlos P. Aguinaga
Anonymous
Ansar Batool and Munir Kazmir
David R. Berz, Esq., and
Sherry K. Berz
Anne E. Brown
Philip A. Brown, Esq., and
Donna Brown+
Mortimer and Ruth Caplin+
Nancy G. Daunton+
Bert Deixler and Leslie Swain+
Melissa Fairgrieve
Carol B. Fischer | Julius Fleischman
Elizabeth E. Force
Mary Anne B. Frey+
John T. Gaffney, Esq.+
John J. Grosso, Jr.
Nancy J. Lippman Halis
Kathleen M. and Lawrence
A. Hough
Candace and Lawrence
Kaplan+
Marvin L. Kay
Kerry Kuhn, M.D., and
Gail Kuhn+ | Eugene and Janet Lambert+
Elizabeth St. J. Loker and
Donald Rice+
Christian and Edna March
Richard Marmaro, Esq., and
Susan Marmaro+
Ralph Ochsman
Brian J. Ratner, Esq.
Donald H. Regnell
Carl E. Ring, Jr.
Walter R. Roberts
Deborah Ratner Salzberg
Marilyn M. Schoenbaum | Carol K. Sigelman+
Michael and Rhonda Thacher
Stephen J. and Francine
Zorn Trachtenberg+
Dorothy P. and Robert L. Tull
James A. Turner+
Robert E. Turner
Mark R. Warner
William Warren+
Elissa G. Wernick and Great
Neck Richman+ |
|---|---|--|---|

THE TEMPIETTO CIRCLE OF THE HERITAGE SOCIETY

The Tempietto Circle of the Heritage Society, named for the tempietto ("little temple") that stands as a campus landmark in Kogan Plaza, recognizes those individuals who have made a planned gift of \$500,000 or more to the university. The following Tempietto Circle members are donors to the Columbian College of Arts and Sciences.

- | | | | |
|--|---|---|--|
| Anonymous
B. Jay Baraff, Esq.
Peter J. Berman
Steffanie H. Burgevin+
W. Thomas Curtis
Nancy G. Daunton+
Elizabeth E. Force | Natalie R. Friend
Judy and Henry Geller+
Mindy D. Goldsborough
Charles and Joan Herber
Larry King
Eugene and
Janet Lambert+ | Donald R. and
Elyse B. Lehman+
Elizabeth St. J. Loker and
Donald Rice+
John D. McGurl, M.D.
Beverly and
Randall Packer+ | Josephine R. and
Richard H. Schlagel
William Warren+ |
|--|---|---|--|

THE HERITAGE SOCIETY

The Heritage Society recognizes individuals who have made documented planned gifts to the university. These gift plans, which include annuities, trusts, and bequests, establish a permanent legacy for each of our donors. The following Heritage Society members are donors to the Columbian College of Arts and Sciences.

- | | | | |
|---|---|--|---|
| Anonymous
Peter J. Caws
Ruby Burns
Derick and Jennifer
Brinkerhoff
Chris O. Brooks
Nancy Broynhill
Barbara W. Callahan
Marcy Chambers
Gail E. Collins
Doris E. Condit
Joseph M. Covey
George A. Dixon+
Carolyn A. Eldred
Frances M. Farina
Joseph P. Farina
H. Nelson Fitton, Jr. | Arlene and Schuyler
Fonaroff
Mary Anne B. Frey+
William H. Girvan+
Reginald C. Grier
Judy A. Harvey
Marjorie Hensley+
Irene M.S. Holt
June J. Hoye+
Richard and Sally Hudgins
Candace and
Lawrence Kaplan+
James E. Kee, Esq.
John and Emily Kendrick
Maxine F. Kendrick
Carolyn B. and
Charles M. Knobler+
Tammy L. Lohmann | John S. Ludwick, Jr., and
Betty Lou Ludwick
Judy Mannes and
David Dantzier
Christian and Edna March
John T. Marlin
Louise W. Marsh
Chandley M. and J. Kenneth
McDonald+
Susan M. Menke
Robert and Carole Minor
Patrick W. Murray*
John B. Nutter
Ellyn C. Phillips+
Julia H. and Richard H. Rush
Eleanor A. Robb
Ellen G. and Eric J. Rosenkranz
Estate of Clara G. Schiffer* | Karen S. Schneider
Marilyn M. Schoenbaum
Barbara L. Schubert
Lois G. Schwoerer+
Carol K. Sigelman+
Helen R. Stecklein
Gary Thom
Jean S. Tippet
Stephen J. and Francine
Zorn Trachtenberg+
Dorothy P. and
Robert L. Tull
Marion Verner
Kitty D. Weaver
Carolyn E. and
Robert G. Wolfe
Peter K. Yeskel
Richard and Helen Yin |
|---|---|--|---|

THE LUTHER RICE SOCIETY

Luther Rice raised the necessary funding and lobbied President James Monroe and Congress to make George Washington's vision of a university in the heart of our nation's capital a reality. Now, nearly 200 years later, Luther Rice Society members are continuing the legacy and advancing The George Washington University and the Columbian College as a premier place of learning and a distinguished community of global leaders.

The Luther Rice Society is comprised of individuals who contribute leadership annual gifts of \$1,000 or more, (\$250 + for graduates between 0-5 years and \$500+ for graduates between 6-9 years), and students who contribute \$75 or more each fiscal year between July 1 and June 30. The following are Luther Rice Society members who are donors to the Columbian College of Arts and Sciences.

Peter J. Accetta	Lynne J. Cardinal	Karen M. Fincutter	A. Curtis Huffman, Jr.+	Pamela L. Lawrence+	Margaret L. Palmer	Bory Steinberg
Isabella S. Ackerman	Colleen F. Carignan	Edward T. Fish	Mark V. Hughes, III, and Susan D. Hughes+	Dan LeClair	Peter C. Palsen	Atheena and David B. Stetson+
Scot Ackerman	Caren L. Caton	Carl P. Fisher	Benjamin H. Hyman	Andrew C. Ledbetter	Nicholas B. Papadopoulos	Kelley C. Stokes
Robert Adcock	Michael Checca and Margaret Leong+	H. Peet and Susan K. Foster	Loring J. Ingraham	Donald R. and Elyse B. Lehman+	Lynn M. Pentecost	Sharon E. Strich
Marc E. Albert, Esq.+	Gilbert Cisneros, Jr., and Jacki Cisneros+	Carlyn S. Frankfort	Elizabeth St. J. Loker and Donald Rice+	Deborah M. Lehr and John F.W. Rogers	Sandra M. Perez	Robert A. Sugarman, Esq.
Anthony M. Alexis	Malcolm C. Clark+	Michael G. Freedman	Elizabeth B. Love	Alice J. Hall-Phillips	Theodore P. Perros+	Marc M. Sussman
Lauren M. Alperstein	Roy S. Clarke, Jr.+	Steven D. Frenkil, Esq.+	John S. Ludwick, Jr., and Betty Lou Ludwick	Beverly Perry, Esq.	Anna P. Phillips	Chandler M. Tagliabue
Lois F. and Leslie M. Alperstein+	Elizabeth A. Coelho	Axel I. Freudmann and Lauren P. Shaw	Michael L. Lupo	Alice J. Hall-Phillips	Ellyn C. Phillips+	Melanie B. Tekirian
Joseph A. Altenau	Estate of Routh N. Coffman*+	Mary Anne B. Frey+	Betsy J. Malpass+	Anna P. Phillips	Beverly A. Pierce+	Barbara L. Tesner+
Marika Anastassiadis	Alan S. Cohen	Pie Frey	John A. Mancus	Ellyn C. Phillips+	Matthew A. Plevelich	Michael and Rhonda Thacher+
Andrew M. Anderson	Christine A. Coleman	Danielle F. Friedman	Morgan W. Manousos	Beverly A. Pierce+	Robert A. Poogach, Esq.	Eric P. Thibault
Ramez I. Andrawis, M.D.	Gail E. Collins	David Friedman	Christian and Edna March	Matthew A. Plevelich	Mary J. and Thaddeus A. Lindner+	Julianne H. Thomas, M.D.+
Kimberly J. Angus	John B. Conway	Chloe A. Furfine	Margarita B. Marin-Dale, Esq.	Robert A. Poogach, Esq.	Paula K. and Steven A. Levine+	John W. Thorne, III+
Anonymous	A. George Cook, III, and Marylou B. Cook	Howard S. Furman+	John T. Marlin	Ramnath and Sangeeta Prasad	Robert E. Levine	Richard V. Timme
Neil E. Aresty, Esq.	Anna W. Crabbe	John T. Gaffney, Esq.+	Richard Marmaro, Esq., and Susan Marmaro+	Val J. Prevedini	Brenda and Paul Lilly	Trevor R. Tisler
Beth and Joel Arogeti	Elizabeth Craig+	Vickie L. Gaul, Esq., and Richard A. Weitzner, Esq.	Melissa H. Maxman, Esq., and Glenn B. Marcus	Michael J. Quinn	Mary J. and Thaddeus A. Lindner+	Gary Tolchin
Grant D. Ashley	Daniel A. Cronin	Judy and Henry Geller+	Howard S. McCutcheon	Lisa M. Racioppi+	Mary J. and Thaddeus A. Lindner+	Stephen J. and Francine Zorn Trachtenberg+
Christine Attar and Mohammed Attar, M.D.	April T. Crowder	Loren F. Ghiglione	Ashley A. McDaniel	David A. and Patricia F. Raffel	Paula K. and Steven A. Levine+	Bryan N. Tramoto+
Justin C. Balsamo	Don A. and Susan J. D'Adesky	Sesen S. Gidey	Chandley M. and J. Kenneth McDonald+	Deborah Ratner Salzburg	Alice J. Hall-Phillips	Diana L. Treadway
Daniel X. Bandong	Nancy G. Daunton+	Stephen Glascock and Barbara Van Beuren	Anne K. McGuirk	Robert J. Rendine, Jr.+	Anna P. Phillips	Keri L. Trolson+
Daniel and Natalie Barkan	Laurie David	Penny Glass and Gordon Avery, M.D.	John D. McGurl, M.D.	Alex Reustle	Anna P. Phillips	James A. Turner+
William W. Barns, Jr.+	Oscar A. David, Esq.+	Ellen B. Godsall	Danielle M. Meister	Douglas A. Roberts	Ellyn C. Phillips+	Hasanna N. and Yao P. Tyus
Peg E. Barratt	Richard D. Davis	Joseph A. Goldman	Eric S. Mendelsohn	Dina N. and Thomas R. Robinson	Ellyn C. Phillips+	Rene L. Utianski
John G. Barth	John B. and Shelley R. Day+	Richard W. Goldschmidt	Stephen E. Mermelstein, Esq.	Edward M. Robinson	Beverly A. Pierce+	Dorothy A. Vaill*
Hilarie F. Bass, Esq.	Bert H. Deixler, Esq.+	Richard B. Goldstein+	James F. and Joan F. Merow+	Richard Rofe	Robert A. Poogach, Esq.	Thomas A. Verdecchio+
Cara B. Battistella	John T. Del Negro, Esq.	Hilary D. Golston	Elizabeth D. Meyer+	David and Karen Rosenberg	Robert A. Poogach, Esq.	Lorraine A. Voles
Char Beales and J. Howard Beales, III+	Ryan J. Dellolio	Warren Gould+	Stephen T. Mollidrem	Sharyn H. Rosenblum	Robert A. Poogach, Esq.	Leon Wagner
Cornelius Bennhold*	Ronald J. Denham+	Thomas M. Goutman+	Martha Morris-Shannon+	Tara D. Rosenblum	Robert A. Poogach, Esq.	Tara G. Wallace
Robert D. Benson	Joseph Deutsch+	Phil and Wendy Gramm	Marybeth and Michael J. Morsberger	Randy R. Ross+	Robert A. Poogach, Esq.	Clarence P. Walters+
Sigrid W. Benson+	Lee W. Deutsch	C. Boyden Gray	Sojung Y. Mosel+	Joshua S. Rothstein	Robert A. Poogach, Esq.	William Warren+
Bill B. and Lynn S. Benton+	Thomas J. Dion+	Kathryn Green and Edward Feigeles+	Joan A. Munoz	Mikal K. Rozenman	Robert A. Poogach, Esq.	Edward G. Ruestow
Barry L. Bernstein+	George A. Dixon+	Jay B. Greenberg, M.D., and Roberta W. Greenberg	Meredith K. Murphy	Edward G. Ruestow	Robert A. Poogach, Esq.	Joseph Y. Ruth and Sharon J. Rogers
Michael D. Billie, Esq.+	Mark D. Dollins+	Margaret P. Greene	Patricia B. and Peter J. Murphy	Edward G. Ruestow	Robert A. Poogach, Esq.	James D. Sadowski
Sarah A. Binder and Forrest A. Maltzman	John F. Donohue, Esq.+	Tylar J. Greene	Alan S. Nadel, Esq.+	Edward G. Ruestow	Robert A. Poogach, Esq.	Michael D. Sansone
Paul M. Binkley	Estate of Mary Louise DonVito*	Kimberly A. Gross	Marcy R. Nadel+	Edward G. Ruestow	Robert A. Poogach, Esq.	Joseph M. Sarreal
David V. Bjelajac+	Claire D. Duggan*	Jason S. Haber and Cory E. Skolnick	Jerome S. Nadler, Esq., and Judith S. Nadler	Edward G. Ruestow	Robert A. Poogach, Esq.	Tal A. Schapira
Howard M. Bloom	Anne and Clark Dumont	Deborah Halber and Bill Wittenberg	Gregory V. Nelson+	Edward G. Ruestow	Robert A. Poogach, Esq.	Marc P. Schappell
Michael P. Bloom	Andrew D. Dunaway	Barry Kringstein	Kathryn Newcomer+	Edward G. Ruestow	Robert A. Poogach, Esq.	Frederick J. Scheuren+
Alan F. Boehm	Peter R. Dunn	Kerry Kuhn, M.D., and Gail Kuhn+	Mary E. Nortz	Edward G. Ruestow	Robert A. Poogach, Esq.	Estate of Clara G. Schiffer*
Berl M. Brechner	Maurice A. East	Linda D. Kulin	E. Magnus and Elspeth Ohman	Edward G. Ruestow	Robert A. Poogach, Esq.	William E. Schmidt
Nancy A. Breslin, M.D., and Peter J. Caws	M. Patricia Edelin	Michael J. La Place, Jr.+	G. F. Ohrstrom	Edward G. Ruestow	Robert A. Poogach, Esq.	Marilyn M. Schoenbaum
Christopher R. Brooks	Amitai Etzioni+	Sheri J. Lagin, M.D.	William E. Oliver+	Edward G. Ruestow	Robert A. Poogach, Esq.	Dana R. Schwartz-Bash
Philip A. Brown, Esq., and Donna Brown+	Larry E. Evans	Eugene I. Lambert, Esq., and Janet V. Lambert+	Emily B. Olmsted	Edward G. Ruestow	Robert A. Poogach, Esq.	Lois G. Schwoerer+
Nancy Broyhill	Mohammad H. Faghfoory	Robert T. Langan	James H. O'Mara+	Edward G. Ruestow	Robert A. Poogach, Esq.	Karen A. Segal
Shelley B. Brundage	Jeffrey and Melissa Fastov	Liz Lauren-Oser and Aaron Oser	Joan K. O'Reilly	Edward G. Ruestow	Robert A. Poogach, Esq.	Meredith P. and Theodore Z. Segal
David E. Brunori, Esq., and Elisse K. Brunori	Joan P. Fegan	Bennett Lavenstein, M.D., and Judith Gadol	Jay D. Owen, Esq.	Edward G. Ruestow	Robert A. Poogach, Esq.	Alan D. and Amy D. Seifer
Doris Bryant	Amanda P. and Michael R. Feinsod+		Toshiya Ozaki+	Edward G. Ruestow	Robert A. Poogach, Esq.	Kristina D. Sgueglia
Steffanie H. Burgevin+	Andrew B. Feldman		Beverly and Randall K. Packer+	Edward G. Ruestow	Robert A. Poogach, Esq.	Daniel F. Sheehan
Barbara W. Callahan+	Nicholas J. Ferris			Edward G. Ruestow	Robert A. Poogach, Esq.	Carol K. Sigelman+
Byron K. Callan, III	Jason C. Filardi			Edward G. Ruestow	Robert A. Poogach, Esq.	Joel D. Silver
Mortimer and Ruth Caplin+	Carly S. and Sebastian J. Filgueira			Edward G. Ruestow	Robert A. Poogach, Esq.	Julie M. Silverbrook

ALUMNI

1935

Wilbur V. Harlan*

1936

Dorothy J. Kurz

1937

Louise S. Earnest

1939

Betty A. Alphin
Clara G. Schiffer*
Robert H. Willey+

1940

Betty A. Alphin
Edward A. Amendola+
Martha H. Hauber
Roye L. Lowry+

1941

Edward A. Amendola+
John W. Bengtson
Courtland H. Davis, Jr., M.D.+
Martha H. Hauber
Faith S. Miller+
William E. Schmidt
Geraldine A. Schneider

1942

Francis S. Pierce

1943

Faith S. Miller+
William E. Schmidt

1944

Davette E. Abkowitz
David M. Bates
Mona-Jeanne Easter
Avonne A. Hartshorn
Elsie G. Hoexter*
Elizabeth Rochfort
Rhea B. Snowden+
Shirley M. Stuntz+
Charlotte W. Stevens+

1945

Davette E. Abkowitz
Helen E. Dunaway
Darhl L. Foreman
Lee S. Harrow+
Patricia C. Hogan+
Margaret P. Jenks
Sylvia D. Kassalow
Lois C. Lord
Winifred M. Miller
Mary L. Murphey
Marion W. Van Uitert
Charlotte W. Stevens+

1946

David M. Bates
Doris G. Billingsley
Elizabeth D. Brigham
Albert Buckberg
John J. Cound+
Harry C. Ehrmantraut
Darhl L. Foreman
Lee S. Harrow+

Avonne A. Hartshorn
Elizabeth H. Hawley+
Harold S. Heffron
Ellen L. Herd
Patricia C. Hogan+
Winifred M. Miller
Mary D. Mulcahy+
Mary L. Murphey
Theodore P. Perros+
Eleanor A. Robb
Rhea B. Snowden+
Shirley M. Stuntz+
Lillian C. Wehr
Betty L. Williams

1947

Albert Buckberg
Harry C. Ehrmantraut
Elizabeth R. Gleason+
Margaret P. Jenks
Jean L. Linton+
Lois C. Lord
Francis S. Pierce
Evelyn R. Schmitt
Marion W. Van Uitert
Helen A. Vigness
John K. Wilkerson

1948

Stanley L. Berlinsky
Elizabeth D. Brigham
John D. Bultman
Jules I. Cahan
Norma J. Courtenaye
Richard J. Evans
Grace C. Ferrill, Esq.
Eleanor S. Gardner
Myra M. George+
Elizabeth R. Gleason+
Elizabeth H. Hawley+
Ellen H. Heyman
Frances D. Howell+
Jean L. Linton+
Laura M. Phillips
Richard L. Reeves
Mabel C. Richardson
Joseph Y. Ruth
Charles P. Wales+
Lillian C. Wehr

1949

Stanley L. Berlinsky
Elise A. Brown
John F. Bullough
Jules I. Cahan
Sybil P. Carof
Elise J. Clark
John J. Cound+
Ann C. Dunnington
Mariana A. Fitzpatrick
Myra M. George+

James C. King
Marion G. Lawrence
Christian L. March
Theodore P. Perros+
Wilbert J. Robertson
Virginia B. Ruff
Joseph Y. Ruth
Rayleona F. Sanders
Paul H. Schellenberg
Harry D. Seybert+
Sally R. Small
Charles P. Wales+
John K. Wilkerson
Yvonne I. Worden+

1950

Elma W. Andrea
Carl E. Balli, M.D.
Maxine S. Balli
Randall Brooks
Elise A. Brown
John D. Bultman
Patricia W. Carlson
John L. Chaney, Jr., Esq.+
Malcolm C. Clark+
Beverly P. Currier+
Helen E. Dunaway
Ann C. Dunnington
Permelia B. Eggerton
Mariana A. Fitzpatrick
George L. Frenkel+
Vilma C. Gagliardi
Eleanor S. Gardner
Natalie L. Giusti
Warren Gould+
Eleanor B. Halak
Ellen H. Heyman
Mary Ann Y. Iverson
James C. King
Sue F. Law
Thaddeus A. Lindner+
Christian L. March
Irving Michael+
Robert C. Minor
Mary D. Mulcahy+
Richard L. Reeves
Wilbert J. Robertson
Donald C. Rosenthal
William E. Schmidt
Jean M. Seybert+
Judith H. Shreve
Elaine S. Simon

1951

Maxine S. Balli
Esther L. Brenner
Edward B. Brittin
Randall Brooks
Frank P. Burford
Patricia W. Carlson
Sybil P. Carof
Elise J. Clark
Beverly P. Currier+
Herbert A. Doyle, Jr.
Edward Engel
Mary A. Evans
Warren Gould+
Ellen L. Herd
Frances D. Howell+
Stanley S. Kidwell, Jr.
Marion G. Lawrence
Albert L. Lloyd, Jr.
Bertha M. Lohrmann
James F. Merow+
Joan F. Merow+
Carol N. Olson

Joan K. O'Reilly
Marian B. Paikowsky
Richard L. Pentecost, M.D.
Laura M. Phillips
Jacqueline Pomeranz
Rayleona F. Sanders
Joel Selbin
Sally R. Small
Helen A. Vigness
Yvonne I. Worden+

1952

Janice I. Broner
Frank P. Burford
Edward Engel
Vilma C. Gagliardi
Judy F. Geller+
Leo Hellerman
Mary Ann Y. Iverson
Kathrine C. Jaouni
Phyllis M. Knowles+
Janet R. Menetrez
Theodore P. Perros+
Laura M. Phillips
Rose Mary A. Renick+
Mary A. Schnitzer
Ann S. Schrenk
Lorenz P. Schrenk
Judith H. Shreve
Vilma Vojta
Robert O. Wells, Jr., Esq.

1953

Patricia R. Braker
William P. Braker
Esther L. Brenner
Edward B. Brittin
Janice I. Broner
John L. Chaney, Jr., Esq.+
Malcolm C. Clark+
Damon N. Cordon
John G. Fletcher+
Natalie L. Giusti
Robert C. Huston, Jr.+
Arthur Kirsch
Carolyn B. Knobler+
Janet R. Menetrez
James F. Merow+
Richard L. Pentecost, M.D.
Rayleona F. Sanders
Joel Selbin
Dorothy L. Vaill*
Margaret K. Wisdom

1954

Elma W. Andrea
Walter L. Baumann, Esq.
John F. Bullough
John D. Bultman
Damon N. Cordon
Herbert A. Doyle, Jr.
Barbara A. Farley
Thomas A. Farley
Edmund H. Feldman
Catherine H. Gainey
Judy F. Geller+
Frances D. Howell+
June J. Hoyer+
James C. King
Albert L. Lloyd, Jr.
Gerald R. Lynch
Shirley A. Massie
Joan F. Merow+
Carol N. Olson
Elizabeth C. Preston

Katharine M. Reynolds
Aphrodite M. Rossides
Ann S. Schrenk
Lorenz P. Schrenk
Walter Shropshire, Jr.
John W. Thorne, III+
Rosa D. Wiener, Esq.+

1955

Doris S. Bruffey
David A. Ellis
Quin S. Elson, Esq.
Barbara A. Farley
Frances B. Feldman
John G. Fletcher+
Warren Gould+
June J. Hoyer+
Arthur Kirsch
Carolyn B. Knobler+
Eugene I. Lambert, Esq.+
Kathryn T. Louka+
John D. Oberholtzer
James H. O'Mara+
Alan Peabody, M.D.
Edith L. Pentecost
Katharine M. Reynolds
Aphrodite M. Rossides
Marion F.K. Selbin
John W. Thorne, III+
Jane W. Van Brimer+
Carol D. Vardeman

1956

Ruth S. Baker
Walter L. Baumann, Esq.
Elise A. Brown
Quin S. Elson, Esq.
Frances B. Feldman
Charles S. Forbes, Jr.
Leon G. Goldstein
Robert S. Goodman
Bernard A. Heckman, M.D.
Irene M.S. Holt
Emanuel Horowitz+
Helen S. Kocher+
Harry D. McCament, Jr.
Wenda D. Reiskin*
Robert B. Sampson
Walter Shropshire, Jr.
Robert G. Sutton
Jane H. Thayer
Paul J. Truntich+
Dorothy L. Vaill*
Helen A. Vigness
Rosa D. Wiener, Esq.+
Lenore G. Zinn+

1957

Sigrid W. Benson+
Roy S. Clarke, Jr.+
A. George Cook, III+
Stanley E. Degler
Stanley Favin
Charles S. Forbes, Jr.
Robert L. Hardesty
Janet M. Helm
Nancy R. Hughes
Kathrine C. Jaouni
Eugene I. Lambert, Esq.+
Albert L. Lloyd, Jr.
Kathryn T. Louka+
James V. Luscavage
Eric S. Mendelsohn
James H. O'Mara+
Alan Peabody, M.D.
Robert B. Sampson

Wesley Schlotzhauer, Jr.+
Carol D. Vardeman

1958

Rebecca B. Coakley
M. Patricia Edelin
David A. Ellis
Agnes B.G. Gates+
Judy F. Geller+
Scott L. Graham
Bernard A. Heckman, M.D.
Vincent W. Hollis, Jr.
Irene M.S. Holt
Robert C. Huston, Jr.+
Richard J. Jamborsky
James V. Luscavage
Olivia B. Maynard
Harry D. McCament, Jr.
Carol O. Napper
Edith L. Pentecost
Walter Shropshire, Jr.
Paul J. Truntich+
Lenore G. Zinn+

1959

Philip E. Battey+
Robert D. Benson
Robert J. Bowen
Malcolm C. Clark+
Elizabeth B. Donaldson
M. Patricia Edelin
Grace C. Ferrill, Esq.
Charles N. Finney, Esq.
Harold D. Hoiberg
Denis A. Jacques, Esq.
Gus A. Mellander
Eric S. Mendelsohn
George Orlove
Wesley Schlotzhauer, Jr.+
Elizabeth E. Toland
Dorothy L. Vaill*
Donald C. West

1960

J. Frank Bernheisel
John H. Clifford
Anita J.B. Davis
Henry J. Ferry
Nancy S. Fogel
Alice N. Goodman
Youtha C. Hardman-Cromwell
Irwin Hecker
Alexandra S. Hodge+
Bernard W. Janicki+
Karlota M. Koester+
Irma R. Koski
Kathryn T. Louka+
Patricia S. McGovern
Gus A. Mellander
John M. Metelsky
Maryrose Miller
Edward P. Murray
Letitia K. Nelson
Dawn D. Palmer
Kenneth G. Perry+
Elizabeth C. Preston
Doris S. Rhodes
Janet G. Schlotzhauer+
Helene M. Shapiro
E. Naudain Simons, III
Richard N. Taliaferro, Jr.
Samuel Trychin, Jr.
A. Etheer Warfield-Decker
Michael J. Witkin

1961

M. Devereux Carter
Routh N. Coffman*+
Joan H. Colbert+
Elizabeth B. Donaldson
Irwin S. Feldman
Alice N. Goodman
Denis A. Jacques, Esq.
Lawrence J. Levine
Robert J. Lewis
Evans J. Mandes
John M. Metelsky
James H. O'Mara+

1962

Helen R. Ackerman
Mary E. Arenas
Barbara L. Boyd
Julia A. Bustelo de Girod
Lee J. Cho
Joseph Deutsch+
Claude W. Elliott
Lucy V. Fusco+
Stephen A. Hoenack
Julie M. Johnson
Barbara R. Levine
Stanley Nesheim*
Kenneth G. Perry+
Ellen O. Pierce
Samuel Trychin, Jr.
Stewart J. Westdal
Michael J. Witkin
Merriam J. Woodhouse

1963

Diana K. Armstrong
Robert A. Becker
Maryada F. Buell
Ruth E. Butler
John H. Clifford
Margaret K. Cohen+
Barbara H. Decker
Alpheus E. Forsman
James W. Gladden, IV
Emanuel Horowitz+
Loretto E. Hosley
Steven Z. Kahn
Peter F. Koehler+
Lawrence J. Levine+
Michael K. Linck, Jr.
John R. Lund+
Elinor W. Magnuson
Evans J. Mandes
Jeannette Murphy
Adele P. Narva
William C. Parke
Alfred G. Russillo+
Walter V. Vink
Allan K. Willingham
Helene B.N. Wolff

1964

Ronald V. Adkins
Anne G. Becklean
S. Woodruff Bentley
Bill B. Benton+
Amelia Y. Bond+
Peter Botos
Robert J. Bowen
Dorothy A. Canter
Elizabeth D. Caveney
John H. Craig
Nancy G. Daunton+
Joseph Deutsch+
John H. Dohring
Kenneth W. Engle

Judith G. Flanders
Maidee R. Gilbert
Ruth B. Glick
Youtha C. Hardman-Cromwell
Eugene F. Hastings
Karen S. Heath+
Diane D. Henderson+
Kenneth F. Hines
Shirley A. Hoemann
Stephen A. Hoenack
John C. Hoffsommer+
Stephie F. Holsclaw
Steven Z. Kahn
Ellen J. Kolansky
Mary M. Krug, Esq.
Warren J. Krug
Barbara R. Levine
Michael R. Light
John R. Lund+
Sonia S. Metelsky
Edwin M. Nemoto
Norman P. Otlin
Ellen O. Pierce
Lenore Schreiber
Paul M. Schwab
Mary H. Shepard
Marc G. Stanley
Michael T. Steinman
Richard H. Thompson+
John E. Westfall+
James P. Zale+

1965

Evelyn E. Albright
Lynn J. Berkeley
David M. Brickman, M.D.
Leland G. Dribin, Esq.
Margaret G. Fletcher
Dawn G. Goodman
Sharon P. Goozh+
Dorothy B. Grimm+
Janet M. Gritz
William F. Grossnickle*+
R. Gerald Heinze, M.D.
Clyde E. Hudson+
Anne C. Kerby
Priscilla B. Kostiner
Herbert R. Kubli
Bai T. Le
Annette V. Lucas
Rona L. Lupkin
Francis J. Masci+
Joseph R. McDermott+
John J. McHugh
Anthony L. Muchnicki, Esq.
Jorge V. Ordenes
Barbara A. Presnall+
Louis D. Richmond
Donna M. Rosenthal
Edward G. Ruestow
Rudolf F. Russart+
Helene M. Shapiro
Joel I. Shulman+
Margaret M. Thomas

1966

Barbara J.L. Appel
Lynn S. Benton+
Suzanne S. Cannon
Penelope P. Chalkley
Margaret K. Cohen+
Nancy G. Daunton+
Walter J. Decker*
Judith Eneguess
Marilyn J. Feldman
Jo Ellen K. Fishman+

Joel A. Geisner
Mary F. Goldway
Jessica Goodman*
Janet M. Gritz
Ellenor D. Hayward
Peter P. Hill
Peter T. Hoffer
Mary H. Ingraham
Steven Z. Kahn
Enid C. Knauth
Bennett L. Lavenstein, M.D.
Phylliss C. Loonin
Evans J. Mandes
Linda H. Manuel
Susan B. Masterson+
Jerrilyn S. Matthews+
Gus A. Mellander
Stephen E. Mermelstein, Esq.
Epp A. Miller
Marcia D. Minichiello
Martha Morris-Shannon+
Murray L. Pearson
James S. Pringle
Robert G. Stephens, M.D.
Edward A. Stern+
Beatrice A. Taylor
Emile F. VanderStucken, III+
Linda K. Vandivort
Ronald G. Waggoner
Diana C. Wanamaker

1967

Daniel M. Atwood
William M. Beckner
Laslo V. Boyd+
Barbara W. Callahan+
Susan R. Channing
Eve C. Church
Routh N. Coffman*+
Terri A. Daniels
Ronald J. Denham+
Berit S. Dronenburg
Frances M. Farina
Dwight C. Hair, Esq.*+
James R. Holtzman
Ronald W. Johnson
Hugo A. Keesing
Irma R. Koski
Aino Z. Leedom
Elyse B. Lehman+
Thomson Lipscomb+
Cynthia J. Little
Alfred Marks
Elizabeth D. Meyer+
Daniel K. Nordby
Joyce O. Nunn
Norman P. Otlin
Houston S. Park, III
William C. Parke
Karin L. Pedrick
Mark W. Petersen
Cynthia W. Pratt
Marilou Rickert
Rhoda Ritzenberg+
Dina N. Robinson
Randy R. Ross+
Ellen S. Siegel+
Karen J. Skinner+
Chung-Ja K. Smith+
John G. Soule
Billie C. Spell
Patricia W. Straus
Julianne H. Thomas, M.D.+
Cathleen A. Weigley
April L. Young
Natalie B. Young

1968

Edward F. Angevine
Susan H. Bane, M.D.
Berl M. Brechner
Steffanie H. Burgevin+
Subhash C. Domir
Robert M. Doule
Helen E. Dunaway
Elaine O. Feidelman
Axel I. Freudmann
Audrey Gardner-Wright
Theodore H. Gilbert
Cynthia L. Goldstein
Richard K. Hester
Tova Indritz, Esq.+
Madeleine R. Jacobs+
Arthur S. Jaeger
Mary N. Jones
Susan B. Kaufman, Esq.
Richard C. Lee
Judy P. Mannes
John T. Marlin
Stephen E. Mermelstein, Esq.
Epp A. Miller
Marcia D. Minichiello
Terry O'Connor
Jorge V. Ordenes
Elizabeth M. Ritenour
Tamar H. Rotem
John R. Sawicki+
Jay A. Siegel
Caroline L. Simon
Robinson B. Smith
Joseph J. Snyder, IV
Kenneth W. Starr, Esq.+
Samuel Trychin, Jr.
Janet M. Von Doenhoff
Terrye G. Zarembo

1969

Deborah S. Aiges
Harriet B. Baldwin
Donna I. Berliner
Buren L. Blackwelder
Shelesa A. Brew+
Andrew M. Brown, Esq.+
Routh N. Coffman*+
John C. Cooper, III
Anita J.B. Davis
Nina R. Dickerson*
Cathryn S. Dippo
Linda P. Dodd
Jeanne Duffie+
Stephen M. Ehrlich+
Judith R. Ellsworth
David Firestone+
Carla C. Flug
George L. Frenkel+
Howard Gofreed, Esq.
Judi M. Haller
Michael R. Hanneld+
Eugene F. Hastings
Margaret D. Hoemann
Mark V. Hughes, III
Wynne S. Hyatt
Richard J. Ikenberry
Raymond V. Jones
Michael R. Koblenz, Esq.
Elizabeth C. Koprowski
Renata S. Kossow
Charlotte A. Kuenen
Linda D. Kulin
Gerard L. Lagace
Elizabeth St. J. Loker+
Elizabeth B. Love
Liddell L. Madden

E. David Marwick
Elizabeth D. Meyer+
Robert E. Michelson, Esq.+
Robert P. Moltz
Margaret Morrison
Pamela G. Morrison
Martha Morris-Shannon+
Winnie P. Pannell
Alexis M. Penzell
Philip N. Perrella
Barbara A. Presnall+
Theodore H. Rosen
Cheri L. Rosenberg
Heather M. Sandifer
James K. Sapienza
Penelope P. Scheer
Lauren P. Shaw
Joseph M. Snyder
Robert A. Sugarman, Esq.
Jane H. Thayer
Stuart A. Tiegel
Bert A. Watson
Helen R. West
John E. Westfall+
Helene B.N. Wolff
Judith Zilczer+

1970

Marc E. Albert, Esq.+
Gloria C. Becker
Jean B. Bernard+
John R. Broadway, Jr.
William E. Caves
Maureen M. Cole
Elizabeth B. Davison
Neil DeHaan, Jr.
John T. Del Negro, Esq.
Cornelius S. Driscoll
Joseph T. Enright
Robert B. Finkelman
Mary Anne B. Frey+
Harriete Frucht-Levy
Steven M. Gelobter
William H. Girvan+
Paul B. Glass+
Alan R. Gold+
Alice J. Hall-Phillips
Jeffrey W. Hartsough+
Gretchen D. Hasse
R. Gerald Heinze, M.D.
Susan E. Howe
Jeanne B. Jenkins
Alvin Kaltman+
Candace G. Kaplan+
Anne M. Kimball
Kerry L. Kuhn, M.D.+
Donald R. Lehman+
Elyse B. Lehman+
Raymond D. Levine
Donald E. Lucas
Frances C. Mayo
Michael P. McFadden
Christine T. Milliken
Julie M. Misegades
Diana R. Molinari
Mary H. Moltz
Faye S. Moskowitz+
Sanford R. Oxfeld, Esq.+
Patricia A. Parsons
Robert C. Rabinowitz
Richard W. Rieder+
Thomas R. Robinson
Susan B. Schechter
Jeffrey J. Schriver
Richard B. Sher
Elizabeth N. Siegel

Jay A. Siegel
Steven B. Silverman
Meredith H. Swift
Chandler M. Tagliabue
Michael W. Thacher+
Karen M. Vaucher
Gwendolyn M. White
Jerome L. Wolf, Esq.+

1971

Mary G. Amirahmadi, Esq.
Mary E. Arenas
Michael Assael, Esq.
Steven G. Bernstein, M.D.
Thomas L. Bertone
Robert A. Blaemire
Arona S. Borpujari
Philip A. Brown, Esq.+
Michael P. Checca+
Tara J. Connell
Barbara C.L. Dantzig+
Francis M. Devine
George A. Dixon+
Moraima D. Donahue
Susan R. Freedman, Esq.
Audrey Gardner-Wright
Mary M. Geci
Jay B. Greenberg, M.D.
William A. Hall
Richard G. Harless
Carolyn Hart
William E. Harward, Jr.
Beverly H. Hegedus
Bell P. Herndon+
A. Curtis Huffman, Jr.+
Meredith L. Janssen
Helen J. Kadish
William N. Klossner
Ruth W. Kraemer
Leonard W. Leroy
Joanne L. Levine
Glenn F. Mackles, Esq.+
Cary J. Malkin
Philip S. Margolis
Epp A. Miller
Alan S. Nadel, Esq.+
Gail O. O'Donnell
William E. Oliver+
Annette C. Osso
Neil R. Portnow
Cornelia F. Potter
Frederick J. Scheuren+
Rise G. Schnizlein
Sheila S. Steelman
Faith E. Stern
Mary Anne D. Tamm
Patricia I. Thigpen
Diana C. Wanamaker
Donna F. Wasserman
Mark L. Wasserman
Bert A. Watson
William A. Watson+
Leslie F. Whelchel-Mathews
Ellen F. Wineman
Philip W. Wirtz
Peter K. Yeskel
Judith Zilczer+

1972

Adrienne N. Armstrong
Jeffrey Bain+
Warren A. Baker
Howard D. Berger+
Barry L. Bernstein+
Michael P. Bloom
Leslie B. Burka

Sharon D. Callagy
Edward Chaszar
Elaine L. Dickinson
David G. Evelyn
Sallie H. Flavin
Ann-Marie M. Fleming
Paul G. Gavejian
Margery E. Goldberg
Charles R. Hurt+
Maria A. Jones+
Harold D. Kahn
Raymond Kassab
Douglas F. Klick
Sandra C. Kolb
Constance T. Laws
Bai T. Le
Robert Lee
Stuart W. Lesses
Lorraine L. Longo
Frances Markunas
E. David Marwick
Debra R. McDonald+
Alexandra H. McElwaine
Barbara N. Morgan
Margaret Morrison
Claire G. Moses
Joseph W. Mullin
Marcy R. Nadel+
Gail Orgelfinger+
Ellyn C. Phillips+
Andrew G. Pollet
Arpi B. Sahr+
Nancy Q. Saul
Frederick J. Scheuren+
Lee C. Schneyer
Don E. Siegal+
Marie-Claire Steinberg
Doreen Sterling
Mabel W. Thornton+
Marie-Cecile O. Tidwell
Rebecca Van Buren
Deborah K. Watkins+
Michael J. Waxman+
Susan Wax-McClive
Walter L. Williams
Gerald J. Yuknavage
John J. Zubritsky

1973

Bruce J. Adams
Barbara S. Anderson, Esq.
Char Beales+
Dorothy D. Beauregard
Mary L. Bishop
Jackson C. Boswell
Ann Brandwein+
Sherahe Brown-Fitzpatrick
E. Jean Capitano-O'Reilly
John M. Cavenagh
Jane M. Christie+
Margaret C. Clarino+
John R. Colby
Mariann P. Crane
Salvatore J. Cumella, M.D.+
John B. Day+
Bert H. Deixler, Esq.+
Marjorie K. Fuhrmann
Robert J. Gaines, Esq.
Ellen B. Godsall
Roger L. Goldblatt
Thomas M. Hall, M.D.+
William T. Harper+
Daniel D. Heath+
Deirdre P. Holleman
Marie I. Holmes
Andrea F. Jackson

Mary Z. Johnson, M.D.
Debra B. Jones
Richard S. Kagan+
Mona W. Kanin
Myron J. Katzoff
Ronna S. Kava
Sheri J. Lagin, M.D.
Steven A. Levine+
Linda S. Lovell
James R. Maar+
Richard Marmaro, Esq.+
Anthony F. Mauro, Jr.
Lindsay R. McClelland
Victoria E. Metz+
William D. Nelsen
Ronald A. Nicholson+
Susan E. Novik
Annette C. Osso
Elizabeth M. Oxendine
Robert A. Poogach, Esq.
Diane G. Spienza
John R. Sawicki+
Gerald Schneider
Mark A. Schwartz
David B. Shapiro
Beverly T. Spadotto
Brooke C. Stoddard
Marybeth S. Stoddard
William O. Turner, Jr.
Patricia Wakefield
Judith R. Wasarhaley
Cynthia R. Weitz
Helen R. West
Eric Wilmeth
Roger C. Woods
Arthur C. Wulwick
Ellen M. Zane+

1974

Heidi M. Alpert
Freddick B. Barder
Gloria C. Becker
Karen J. Berman
Carol Y. Berns, Esq.
Jackson C. Boswell
Karen E. Brock
Glenda C. Buff
Dorothy A. Canter
J. J. Carter, M.D.
Myron B. Chace
Marian R. Davidson-Amodeo
Catherine L. Donich
Richard L. Freedman
Steven D. Frenkil, Esq.+
Paul L. Frieden, Esq.+
Bruce L. Gabel
Linda M. Gantt
Marcia A. Glauberman+
Robert F. Green
Ginger Greenstein
Jane E. Hindenlang
Carol A. Hodes
Geraldine S. Jackson
Jay E. Kivitz, Esq.
Alan S. Klavans+
Roger H. Leemis, Esq.
Heidi A. Lewis, Esq.
Susan G. Lichtenfeld, Esq.
Joel A. Lipkin+
Kathleen E. Maley+
Alexandra H. McElwaine
Robert A. Michaels
Nachama S. Moskowitz+
Jerome S. Nadler
Judith S. Nadler
Mary J. Normandy

honor roll

Lenore Pearlman
Eddie L. Perkins
Val J. Prevedini
David A. Robinson, Esq.+
Thomas R. Robinson
Sheldon D. Rudin
Pamela L. Russ
Jeffrey L. Schwartz
Carol A. Seals
Stanley F. Seligman
Caroline L. Simon
Cathy S. Singer
Ira J. Singer
Susan S. Smirnoff+
Lala F. Snead
Regina R. Thomas
Lawrence Thurston
Connie L. Vaughan
Geoffrey H. Vincent+
Clarence P. Walters+
Gerald E. Webb
Ellen P. Welsh+
Rita C. Williams
Allison J. Wolowitz+
Steven Wolowitz, Esq.+
Stephen S. Woods

1975

Terence C. Baer
Hilarie F. Bass, Esq.
Jeffrey P. Berns
Robert P. Biggers, Jr.+
James A. Bridenstine
Michael F. Burror
Telesphore L. Charland+
Harvey S. Clapp
Alan S. Cohen
Martin B. Cohen
Steven R. Corwin
Larry R. Cunningham
Barbara C.L. Dantzig+
Gretchen Delong
Margaret S. Devenney
Norman R. Elrod
Ann C. Erteschik
Nathan Erteschik, M.D.
Larry E. Evans
Barry S. Feigenbaum+
H. Peet Foster
Mary A. Frey+
Carol L. Gabel
Daniel H. Gallagher
Mary H. Grant
Kim Holmes
Mary Houlihan
Monica M. Huddleston
A. Curtis Huffman, Jr.+
Elizabeth D.M. Kiernan
Barbara Y. King
Robert Lee
Paula G. Lettice
Donald E. Lucas
Donald P. Milburn
John V. Moeser*
Irene C. Mosher
Lawrence R. Mumford
Clare C. Murphy
Frederick J. Murphy
John D. Nelson
Carolyn A. Nevins
Wendy L. Packman, Esq.

James M. Ramlow
Deborah Ratner Salzberg
Sanae I. Reeves
Shannon L. Rice
Beverly E. Roca
Nancy Q. Saul
Mark E. Schleifstein
William H. Schrag, Esq.
William H. Seals
Pamela B. Smith
Gael D. Summer
Jai E. Swyter+
Scott E. Thompson+
Ellen D. Tillman
Andrew B. Trachtenberg
Ann L. Wild

1976

Neil E. Aresty, Esq.
John F. Barry
Gilbert C. Binnering+
Howard G. Borgstrom
Elizabeth D. Brigham
Andrea W. Brown
Patrice C. Brown
Anna M. Bryant
Cary B. Cheifetz
Larry H. Chesin
Roy S. Clarke, Jr.+
James C. Cleveland
William T. Cobb+
Robert L. Cohen
Stanley A. Cohen
Thomas K. Collins
Charles J. Corcoran
Charles P. DeWitt+
Michael P. Dolan, M.D.
Susan S. Flanigan
Mark S. Frankel
Leonard A. Freedman
Loren F. Ghiglione
Richard M. Goldfarb
Richard W. Goldschmidt
Thomas M. Goutman+
Michael M. Gross, M.D.
Julia L. Haifley
Claudia W. Herrold
Joe L. Howell, III
Arthur J. Johnson
Kenneth J. Kalscheur
Jan G. Kaplan
Myron J. Katzoff
Pamela L. Lawrence+
Marian A. Lee
Barbara S. Levine
Paula K. Levine+
John A. Mancus
Le-Nhung McLeland
Susan C. Michal
Lisa D. Moore
Meda B. Moore
Mark D. Okusa
Beverly Perry, Esq.
David A. Raffel
Sandra M.
Robertson-Hilton+
Paul S. Rossi
James M. Russel
Samuel Schwartz
Lori S. Seader
Sarah S. Shaffer

Gregory B. Simpkins
Clarice R. Smith
Cynthia M. Smith
Angela M. Soto-Hamlin
Freda C. Steinberger
Virginia H. Thelin
Connie L. Vaughan
Bernice K. Weiss
Bernard J. Welch
Anne S. Wood

1977

Lois F. Alperstein+
Sandra H. Alston
Anita L. Auerbach
Lolita M. Bebris
Steven R. Bloom
Rosemary W. Bordley
Lorraine Brown
Irene Butcher
Benjamin F. Calvo, M.D.
Dale Connelly
Jean T. DeBell-O'Neal
Tere DeMoss
Jeffrey S. Distenfeld+
Barbara P. Dudley
Susan C. Flashman
Richard M. Flynn+
Dennis M. Gehley
Terry L. Gingell
Kathryn Green+
Nancy J. Lippman Halis+
Guy S. Hoo+
Elizabeth C. Koprowski
Carol L. Kregloh+
Amy E. Kurland
Marilyn R. London
Martha T. Mazzarella
Renee M. Meyer+
Margaret Morrison
Jeannette Murphy
Carl B. Neff+
Gloria B. Pendleton
Ann Perch+
Charles E. Perrotta
George S. Pever+
David M. Post
Joyce C. Pugh
Mitchell N. Ross, M.D.+
Sally A. Saddler
Lola E. Seidl
Gary D. Shaffer+
Jay A. Siegel
Jane T. Smith
Samuel Smith, M.D.+
Andrew J. Svedlow
Peter L. Tancredi
Glenna J.W. Thurmes
William G.L. Turner+
Steven H. Waitzman
Margit A. Williams+
Allan J. Zaic*
Greg R. Zarelli
Mark L. Zusy

1978

Susan Abrahams
Stephen J. Acree
Sandra H. Alston
Paula W. Argosh
Joel Arogeti
Peg E. Barratt
Rosemary Beavers
Byrna A. Bornstein
Helene G. Brecher
Diana A. Carsey

William B. Cherkasky
Victor E. Church
Dana P. Clerkin
Wayne Countryman
John F. Dudley
Miu Y. Eng
Horace E. Ervin
Joyce M. Farling
James D. Fisher+
Richard J. Frisch
John N. Fugelso
Susan S. Geyer
Felicia L. Goins
Roberta W. Greenberg
Michael M. Gross, M.D.
Gerald R. Hankins
Richard P. Harland+
Roger A. Heldman
Henry F. Hobek
Milo F. Hunter
Barbara P. Isaacs
Miriam A. Kazanjian+
Mitchell A. Luxenberg
George L. Martin
Frank J. Massaro+
Thomas J. McIntyre, Jr., Esq.
Garrett R. Moore
Henrietta J. Morse
Claire G. Moses
Gregory V. Nelson+
Mary J. Normandy
Clay C. Purdy, III
Thomas P. Rametta
George D. Santopietro
Sarah S. Shaffer
Leon R. Shein
Cathy S. Singer
Deborah Stern, Esq.
Fredric I. Storch+
Anthony J. Straus
Marc M. Sussman
David E. Teicher
Michael F. Thompson
Candace M. Volz
Marsha J. Walker
Kimberly Wayland
Miriam N. Wiener
Carolyn H. Zuttel

1979

Elizabeth C. Arnold
Linda C. Austin
Joseph S. Bartusis+
Elizabeth L. Bergin
Carole D. Blankman- Ginsburg
Thomas E. Brinkman, Jr.
Anna M. Bryant
Anthony M. Chaffier
Daniel M. Cortes
Lawrence E. Culleen, Esq.
David L. Elkind
Howard A. Frank
Howard S. Furman+
Teresita Gonzalez
Stuart D. Gosswein
Cheryl Gunn
Dana A. Hall+
Kathleen V. Kelley
John G. Kowalczyk
Aaron M. Lowe
Betina M. Margolis
Chandley M. McDonald
Faye S. Moskowitz+
Terry U. Mossop
Adam Nassar
Gordon G. Novinsky+

Jane M. O'Hara
Stephen G. Oprendeck, III+
Anthony K. Pordes+
Patricia F. Raffel
Sanae I. Reeves
Claire E. Rusowicz
Jacqueline M. Samuel
Abbe Z. Sands
Karen A. Segal
Tomas J. Silber
Clarice R. Smith
David Bruce Smith+
Sharlan R. Starr
Carole A. Stover+
John G. Sussek, III+
Philip G. Terrie+
William T. Theros
Robert G. Trumbull, III
Paula R. Valente
Lisa R. Van Wagner
Timothy S. Walker
Marilyn B. Wassmann
Arnold L. Weber
Steven J. Weisel
Daniel H. Weiss
Lynette D. Wigbels+
Ann L. Wild

1980

Raymond J. Ahearn
Neil E. Aresty, Esq.
Allan D. Baken
William W. Barns, Jr.+
Robert A. Blaney+
Deborah E. Bodlander
Jill S. Braden+
Byron K. Callan, III
Laura K. Cooper
Paul F. Dempsey
Bryan S. Drouin
Janet S. Drouin
Camille R. Fenton
John M. Fenton
Ferdinand H. Frassinelli, II
Mary F. Goldwag
Roberta W. Greenberg
Bonita B. Griser
Spedden A. Hause, III
Cathy L. Helm
K. Andrew Huba
Jack K. Hume
Nancy N. Hunt
Frederick M. Joyce
Steven Z. Kahn
Terry E. Kaytor
Jeane P. Kight
Katherine A. Kilduff+
Kenneth B. Leonard+
Luna L. Levinson+
Sasja Lucas
Margarita B. Marin-Dale, Esq.
Anne K. McGuirk
Marna L. McLendon
Carlos I. Medeiros+
Maria E. Miah
Debra D. Morris
Howard A. Morrison+
Susan C. Newell
Jorge V. Ordenes
George A. Plesko+
Jean L. Preer
Lisa M. Racioppi+
Jack T. Reidhill
Robert A. Relick
Rebecca Rene
Lori S. Seader

Blair W. Smith+
James E. Soos, Jr.
Richard J. Steigman
Nancy E. Tate
John P. Taylor+
Voula K. Tsoutsouras
Ellen V. Weingarten
Meredith A. Weiser
Sandra J. Weiss, Esq.
Annoinette D.
White-Richardson
Angelo Wider

1981

Anthony M. Alexis
Helen C. Aster
Stephen A. Bai
Mary F. Bayliss
Dean G. Belmont, Esq.
Michael D. Billiel, Esq.+
Joseph B. Bluemel
Melvin Brock
Margaret E. Bruhn
Anna M. Bryant
Wendy Cobb-Krinitzky
Peter L. Collins+
Bonita V. Crawford
Kevin T. Crilly
Samuel S. Deitrick
Cathryn S. Dippo
Deborah H. Doolittle
Steven Einheber+
Norman R. Elrod
Lawrence B. Fertel
Richard B. Goldstein+
Carroll N. Guin
Alan L. Halvorson
David D. Hanig
Eric C. Johnson
Ronald W. Johnson
D. Samantha Johnston
Patricia M. Kavanaugh
Howard D. Kunik
Maria L. Longo-Swieck, Ph.D.
Betsy J. Malpass+
Frank G. Marcovitz
E. David Marwick
Karen I. McKenney
Wendy J. Merrill
Peter J. Morin
Nancy N. Odegaard
Marilyn S. Paul
George R. Pleat
Donna S. Ronsaville
David M. Santucci
Hassan Sedaghat
James R. Shine
Madeleine R. Shirley
Robert Sroka
Doreen Sterling
Jonathan M. Sternlieb, M.D.
Cornelia J. Strawser
Trung H. Trang
George T. Urch
Lorraine A. Voles
Mary Anne Warner
Peggy Y. Whitaker
Carol C. Wilkinson
Thomas M. Young

1982

David Allison
Anne F. Baum+
Martin L. Baum+
Andrew P. Baxley, Esq.
Patricia S. Brey
Felice S. Ciccione+
Steven Ellison, Esq.
Sarah Elpern
John T. Gaffney, Esq.+
Teresita Gonzalez
Mary H. Grant
Shoshana M. Grove
Charles M. Hanson
Richard J. Hinkemeyer+
Barbara J. Hopkins+
Marjorie S. Inparaj
Barbara P. Isaacs
Thomas E. Knightly
Janet D. Lyman
Elizabeth A. Marini
M. Dennis Marvich+
Christine A. Matthews-Cutler
Marie H. McGlone
Patricia A. Medeiros+
Kathryn J. Mohrman
Amy A. Monahan
Ronald F. O'Day
Anne E. Peret
Catherine C. Perge
Elizabeth T. Porcell+
Janet V. Powers
Dale A. Pupillo
Kathryn C. Ray
Richard H. Russell
Thomas M. Ryan
Jeffrey A. Salino
Noelle B. Schoellkopf
Terry L. Segal
Andrew B. Serling
Cindy A. Stiles
Mario J. Strafacci
William O. Turner, Jr.
Lily V. Uy
Jose M. Villagra
Douglas J. Weckstein
Kevin A. Wemer, Esq.+
Kenneth M. Winneg
Marcy S. Wolpe+

1983

Deborah L. Albert
Elizabeth B. Applebaum
Debra J. Ashton
Loren L. Booda
Jacqueline L. Byrd
Caren L. Caton
Frances A. Clarke
Richard D. Cohen, Esq.
Lammot D. Copeland, III
Elizabeth Craig+
Luis W. Diaz
Nancy S. Doane
Mark D. Dollins+
Sarah Elpern
Barry G. Epstein
Robert L. Fragola+
Wallace B. Gernt, Jr.
Jennifer J. Googins
Michael C. Gregoire
Alan T. Grening
Stephanie A. Heacox
Paul A. Hojnacki
Nancy J. Iacomini
Mary A. Jenkins+
Marjorie J. Kahn
Alan S. Kline
Barbara A. Long+
Donald E. Lucas
Julie M. Mangis
Stephen L. Mangum
Annette M.R. Marcil

Andrew M. Mekelburg
Andrew J. Meranda
Charles A. Miller, III
Mary E. Moguee
Anthony Narcisso
Debbie F. New
Dennis J. Nutt
Thu-Hang H. Ogburn
Christina D. Parra
John F. Ramirez+
Pamela P. Roach
Hassan Sedaghat
Cornelia J. Strawser
Wesley R. Thomas
Elizabeth C. Trang
Deborah L. Trent
Robert G. Trumbull, III
Carrie E. Turrell Callahan
Nina A. Weisbroth
Richard A. Weitzner, Esq.
Karen B. Wiener
Catherine S. Willmore
Diane M. Wilshere
Philip W. Wirtz

1984

Lisa K. Arbelaez
Frank J. Aucella
Virginia M. Austin
Daniel Barkan
Anthony G. Barrett
Cheryl Beil+
Jennifer Belcher+
Melvin Brock
David E. Brunori, Esq.
Tod W. Burke
Jacqueline L. Byrd
Sayeeda A. Chaudhry
Carol T. Cox
Oscar A. David, Esq.+
Richard M. Flynn+
William J. Fogarty, Jr.
Margaret G. Funkhouser+
Fengying M. Hsu, M.D.
Nancy R. Iris
Michele E. Kahn
Randall E. Kaye, M.D.
Lucinda A. Leach
Elisabeth P. Liebow
Jean L. Linton+
Leslie B. Lord
James L. Mallove
Julie M. Mangis
Stephen L. Mangum
Melissa H. Maxman, Esq.+
Justin X. McAvoy
Amy G. McDonald
John D. McGurl, M.D.
David M. Moore, Esq.
Kirsten L. Olsen
Susan M. Poniatowski
Robert J. Rendine, Jr.+
Douglas A. Roberts
Theodore H. Rosen
Lynda O. Shuman
Bruce A. Silver
Bory Steinberg
Anne L. Stevens+
Leonard A. Tabacchi, Jr.
Lily V. Uy
Alan I. Zucker

1985

Sidney W. Abel+
Mary J. Baedecker+

James M. Blumenfeld
Jeffrey P. Borden
Constance M. Brown
Mary W. Carraba+
Kwai-Cheung Chan
May-King Connolly
Gregory A. DeLozier
Elizabeth B. Derbyshire
Mary A. Eaddy
Marilyn F. Fedelchak-Harley
Sieglinde K. Fuller
Audrey Gardner-Wright
Johanna P. Glass+
David D. Hanig
Susan C. Heald
Wayne E. Johnson
Andrea W. Kuhn
Michael J. La Place, Jr.+
Judy P. Mannes
Joanne B. Mazarella
Cathleen K. McCabe
Lynn M. Pentecost
Margo A. Reeves-Lewis
Michelle L. Rice
Jeanette S. Ridge
Douglas A. Roberts
Marc P. Schappell
Alan Sokol
Beth C. Stern
Lawrence Thurston
Nancy W. Tuccillo
John F. Van Patten
Elissa G. Wernick+
Kevin A. Wood

1986

Ameel Al-Bayati
Natalie W. Barkan
Spencer Becton
Todd A. Birkenruth
Charlotte G. Boston
Heide K. Clark
John H. Gwynn
Clare A. Heberg
M. Irshadullah
Linda G. Kuzmack
Lee A. Lobuts-Layden
Chrysanthos A. Miliaras
Paul W. Oshel
Richard Rofe
Donna S. Ronsaville
Sharyn H. Rosenblum
Cornelia M. Rutherford
David R. Schinzel+
Sharon E. Sitrin-Moore
Christopher A. Smith
Bryan L. Spangelo
Carrie E. Turrell Callahan
Nina A. Weisbroth
Jolie R. Worobow

1987

Frank J. Aucella
Richard K. Biddle+
Sara S. Bradshaw+
Mary C. Davis
Patricia R. Evans
Sally A. Fitzgerald
Richard M. Flynn+
Robert P. Forbes
Anthony J. Hill+
Sylvia Hordosch
Benjamin B. Klubes, Esq.+
Steven Komarow
Kenneth R. Knouse, Jr.

Beth S. Lewyckij
Monica L. Lombardi
Brian A. Malone
Charles L. Marshall
Carol Matsuuchi
Karen M. Meisner
Lori M. Moussapour
Cynthia A. Nelson
Jennifer A. Piemme
Michele L. Poynton-Marsh
Pasquale J. Rocco+
David E. Russell
Hope P. Sanker
Scott L. Smith
Kathleen Steeves
J. David Sulser
Lloyd M. Thayer
Lawrence Thurston
Kenneth E. Troxell, Jr.
Rebecca A. Turner
Helen Cerra Ulan
William L. Vantine
Muthu K. Vellayan

1988

Paul J. Andrews
Alan F. Boehm
William D. Briggs
Teresa W. Byler
Brett A. Garber
Marla B. Gross
Elizabeth R. Hatcher
Aimee M. Jackowski
Thomas P. Keck
Marjorie C. Kelaher
Susan L. Klaus+
Patricia V. Lindley+
Martha A. Maust
Lorraine McCall
Christine M. Nardi
Joyce L. Owens+
David S. Powars
George E. Reed
Brett R. Roach
Karen Rotgin-Bialek
Naomi C. Shapiro
Daniel F. Sheehan
Barbara G. Shipes+
Cathryn F. Steel
Robert G. Trumbull, III
Heather A. Tzannis
Sarah F. Wassum
Glenn P. Wicks, Esq.
Leslie A. Wollack

1989

Tracy T. Abriola+
Susan R. Aldrich
Kathleen D. Brady
William D. Briggs
Molly K. Brown
Heide K. Clark
Karen L. Crenshaw
Hugh J. Deblij
Edward J. Fiorentino
Lynda A. Gallagher
Joseph L. Greenlee
Reginald C. Grier
Patricia A. Hammick
Joseph A. Hawkins+
Beverly F. Heimberg+
Anita M. Hibler
Dorsett W. Jordan
Sheree M. Leonard
Luna L. Levinson+

Richard G. Martinko
David J. Mayer
Anne K. McGuirk
Patrick P. O'Carroll, Jr.
Ellen L. Parkhurst
Joseph J. Pfanzteter
Sangeeta Prasad
Carol R. Sacks+
James D. Sadowski
Arlyn S. Schlosberg
Sandra M. Singer
Ronnie G. Smith
Gregory C. Spengler+
Bryan N. Tramont+
Dana F. Volman+
Karin S. Wendzel

1990

Kathleen D. Brady
Angelita M. Colon-Francia
Joseph A. Conroy
Matthew M. Crouch
Lauren S. Danner+
Deanna D. Dopslaf
Daina S. Eglitis
Jaren G. Horsley
William R. Joseph
Myra F. Joy+
Grace E. Katz
Robert K. Kearney
William J. Murphy
William F. Rosenberger
Marc P. Schappell
Hassan Sedaghat
Diane Shaw
Christine L. Taraska
Jennifer L. Wagner
Courtenay B. Wallach
Frank M. Wroblewski+
Elizabeth Z. Zack
Richard J. Zack

1991

Thomas C. Adams, III
David A. Albert
David T. Aldrich
Roya L. Bauman
Mark A. Borer
Paul D. Bourquin
Christine A. Coleman
Thomas A. Coyne
Elena G. De Eder
Steven A. Farber
Steven V. Gilbert
Kim S. Gramlich-Heller
Gregory C. Heller
Julie A. Jampolis
Vicky L. Jefferis
Jill P. Madenberg
Leigh A. Newman
Joyce M. Northwood
Deirdre O'Leary
Susan V. Pannell
Edward M. Robinson
Michael S. Rosenberg, Esq.
Kevin C. Ruffner+
Heather Y.B. Schultz
Ronald L. Sharps
Jorge A. Shepherd
Paul K. Sternal+
James E. Stevens
Tammy L. Stocking
Bradford S. Wetstone

1992

Leslie B. Burka
Gail E. Collins
John A. Creech+
Anthony L. DeVico
Andrew L. Dixon, III
Kurt A. Engleka
Daniel H. Friedman
George V. Hellman
Kenneth J. Ian
Nancy A. Israel
Ellen A. Bodalski Kaplan
Andrew P. Keaveney
Kraig M. Kennedy+
Beth C. Kimmerling+
Erica J. Krantz
Shirley J. Lytle
Cindy R. Richmond
Vincent G. Rocco
William F. Rosenberger
Daryl T. Stuart+
Melissa S. Toms
Eugene J. Toni
Carolyn J. Winje

1993

Julie M. Altman-Liddle
Jerry L. Archer
Sandra D. Arnell
Marc B. Bailkin
Katherine E. Beery
Constance A. Carrino
Kendra A. Cipollini
Thora S. Colot
John Ehrman
Amanda P. Feinsod+
Michael R. Feinsod+
Matthew G. Fetchko
Jason C. Filardi
Jeffrey D. Grant
Jordan C. Graubard
Christine O. Hamp+
Barbara A. Harrelson
Stuart L. Harshbarger+
Renee L. Hicks
Diane S. Laviolette
Beth S. Lewyckij
Adam H. Marks
William J. Maurer
Ann M. McLeod
Lyn A. Messner
Carol A. Olson
Genyong Peng+
Mary B. Poole
Peter A. Ratkevich
Jennifer P. Rocco
Miriam D. Rosenthal
Linda T. Ruckel
Melissa J. Schuberg
Dana R. Schwartz-Bash
John D. Sherwood
Michael A. Tyler+
Leanne P. Vaeth
Lawrence H. Watson, III
Elisabeth J. Wood
Kim B. Worrell

1996

Eleanor P. Aab
Kelly C. Ames
William B. Andrews
Howard G. Burnett
Susan L. Boucher-Foxon
Cheryl D. Cobb+
David M. Cochran, Jr.
Lee W. Deutsch
Scott T. Earl
Peter D. Edelson
Christopher T. Edwards+
Meredith G. Erickson
Kristen B. Floom
Nancy M. Foster
Timothy R. Henkle
Marcella B. Jacobs
Elizabeth C. Matto+
Richard C. Munn
Genyong Peng+
Tatyana S. Schriempf
Laura M. Spina

1994

Roya L. Bauman
Holly T. Brigham
Gretchen M.R. Bulova
Gilbert Cisneros, Jr.+
Kim M. Deane
Brinille E. Ellis+
Diana L. Freas-Lutz
Bruce J. Gruenewald

Stuart L. Harshbarger+
Margaret D. Hayes
Mickey J. Hayward+
Michael I. Krauthamer
Eugene Kupchella
Karen L. Lamb
Wayne A. Morrissey
Candis M. Orvis
Jason R. Osborn+
Denise E. Pankow
Erika A. Peltz
Devon L. Pyle
Muriel Z. Ray+
Jennifer A. Rothman
James A. Sartucci
Yoku Q. Shaw-Taylor
Charles E. Silva
Cindy R. Vande Stouwe+
Therese A. Svat
Amy L. Taylor
Barbara A. White
Thomas W. Yanni

1995

Monique M. Antoine
Patricia L. Arrington
Grant D. Ashley
Amy M. Bechick
Julie M. Brinker
David E. Brunori, Esq.
Mary W. Carrabba+
Rachelle A. Dubow
Lisa A. Hoston
Ryan D. Israel+
James S. Jewell
Janeen M. Latini
Elizabeth L. Lawson
Leonard G. Lazarus+
Michael N. Levy+
Richard G. Long
Heather M. Norris
Brett J. Rodda+
Beverly C. Rodgerson
Jeanne M. Rose
Shannon C. Sampson
John D. Sherwood
Kelly D. Smith
Keri L. Trolson+
Arthur F. Wick
Niroshan M. Wijesooriya
Cathlene D. Williams
Kirsten L. Yauch-Hess

1996

Eleanor P. Aab
Kelly C. Ames
William B. Andrews
Howard G. Burnett
Susan L. Boucher-Foxon
Cheryl D. Cobb+
David M. Cochran, Jr.
Lee W. Deutsch
Scott T. Earl
Peter D. Edelson
Christopher T. Edwards+
Meredith G. Erickson
Kristen B. Floom
Nancy M. Foster
Timothy R. Henkle
Marcella B. Jacobs
Elizabeth C. Matto+
Richard C. Munn
Genyong Peng+
Tatyana S. Schriempf
Laura M. Spina

Angela M. Thornton
Elizabeth M. Tupper
Gary S. Weisman
Heather M. Young+
Thomas E. Zutic

1997

David J. Algranati
Leigh Z. Gallander
Marisa F. Capone
Kedrick B. Carr+
Mitchell Casar
Julie E. Contreras+
Elaine M. Douglas
Adrienne L. Gizicki
Lee C. Heiman
Jennifer F. Hembree
Karen M. Hibbitt+
Kimberly L. Hill+
Seth D. Kaplan
Nick Kistenmacher
Margaret L. Knowles
Courtney N. Mikoryak
Samantha J. Ozarin
Melinda J. Pollack
Shervonne G. Powell
Jennifer L. Relis
Cynthia M. Roldan, M.D.
Benjamin C. Rosenzweig
Christopher R. Shafer
Laura A. Springer

1998

Allison R. Barenbaum
Jenny E. Benjamin
Steven H. Bernauer
David J. Cohn
Bryan R. Daves
David H. Ellenbogen
Sieglinde K. Fuller
Kedar Gangopadhyay+
Tamara L. Graysay
Robert E. Hertzfeldt
Hillary E. Hess
Laura C. Hooper
Tracey S. Horwich+
Chia-Hsin Hu
William F. Hunt
Christina N. Juliano
John W. Mishler
Noreen S. Miyake
Stacy R. Miller Moock
Megan E. Mooney
Demetra S. Nightingale
Yoku Q. Shaw-Taylor
Reynolds R. Skaggs
Kevin W. Smith
Ivy M. Stewart
Mariusz A. Sumlinski
Kerry M. Washington
Alesia M. Young

1999

Amy M. Bechick
Tracy J. BeMent
Laura L. Bobeczko+
Marco Cercone+
Catherine W. Cooper
Meredith G. Dubner
Karen M. Fincutter
Zakhia X. Grant
Jason S. Haber
Christopher S. Hamner
Ross B. Harrison
Andrew B. Hoffman

honor roll

Donald P. Jacobs
Kenneth A. Johnson
Caiyi Lang
Yan Liu
Rayna B. Luchs-Marz
Rebecca R. Osborn+
Patrick M. Preston
Elizabeth M. Sagat
Jonathan T. Skrmetti
Becky S. Sloviter
Ainsley S. TeGrotenhuis
Peter N.M. Troedsson
Darrell R.C. Villaruz
Michele B. Wahba
Peter R. Wahba, M.D.
Julie J. Wilson
Joseph J. Yamamoto

2000

Amal S. Amin
Crystal O. Backus
Jacob A. Balter+
James W. Bowen
Thomas F. Brady
Jeffrey C. Brown
Angela M. Burrell
Colleen F. Carignan
Mary E. Cummins
Tejwant S. Datta
Danielle F. Friedman
Courtney C. Pace Halvorsen
Donald E. Jaccard
Richard J. Kelly
Jennifer B. Lerner
John M. McGlasson, III
John W. Mishler
Jamie R. Mogil
James J. Quinlan
Wendy L. Schultz
Julie L. Schumaker+
Christina H. Taylor+
Katherine L. Vollen
Aditi Walia
Linda W. Wild

2001

Anthony J. Accinno
Vincent J. Badolato
Marcus R. Brown
James L. Cantor
Martin L. Connolly
Daniel H. Else, III
Marta E. Losonczy-Marshall
Kimberly J. McGraw
David G. Pauly
Allyson Purpura
Darren A. Ressler
Christopher S. Shaw
Benjamin M. Simon+
John E. Uggen
Michael C. Zito

2002

Jennifer L. Aronson
Stephanie L. Baxt
Michael Y. Bennett
Jason B. Blank
Wendy B. Bronfein
Frances B. Brookner
Jessica S. Cohen

Elena G. De Eder
Daniel W. Ericson, Esq.
Richard T. Ernsberger
Debra B. Hager
Julie A. Harnik
Laura C. Hooper
Ayanna D. Jackson-Fowler
Kristen M. Kaczynski
David Kanevsky
Matthew E. Kernkraut
Jung-Ah Kim
Sarah F. Kohari
Brandon M. Konda
Jason P. Miller
Kara D. Miller
Benjamin Z. Landman
Nicole M. Letelier
Michael L. Lupo
Christopher D. Maine
Katherine M. McGoldrick
Arash Naderi
Catherine T. Ngo
Jeffrey T. Petizon
Stephen W. Press, Jr.
Maria R. Rublee
Michael D. Sieburg
Sara E. Stroman
Jack C. Thompson

2003

Damon L. Burman
Joanna L. Collins
Ashley D. Crawford
Dilyan I. Dryanovski
Zeb E. Eckert
Kate A. Evangelista
Carly S. Filgueira
Emily A. Filler
Andrew D. Goldberg, M.D.
Amy L. Hall
Margaret E. Hoyt
Chia-Hsin Hu
Alfia A. Khaibullina
Stacy B. Leff
John M. McGlasson, III
Ann E. Mercogliano
John C. Mooney
Colleen S. Morith
Kevin A. O'Reilly
Francesco G. Paganini
Tara D. Rosenblum
Joshua S. Rothstein
Krishna V. Ruano
Theodore Z. Segal
Matthew W. Tisdale
Pamela R. Townsend
Brandy D. Vause+
Lisa M. Williams

2004

Roger K. Alexander
Kevin T. Barnett
Sasha Baumrind
Melanie S. Bernstein
Sabrina G. Bertucci
Emily M. Blair
Kara A. Boone
Sonya G. Brzozowski
Amy M. Bucciferro
Elizabeth A. Coelho

Besse J. Dailer
Laura E. DeLucia
Dale W. Dowling
Amy H. Freireich
Matthew L. Frisbee

Michael M. Goldberg
Cassandra A. Good, PhD
Katie L. Greene+
Elizabeth S. Harrison
Sheila K. Hennessey
Anuj K. Kashyap
Erica M. Rosenthal Kraus
Mary P. Marca
Brianna S. Miers
Alessia M. Miller
Eric M. Nakano
Melissa S. Nyman
Anya M. Olsen+
Toshiya Ozaki+
Sally A. Parkhurst
Robert W. Paxton
Sean M. Perkins
Julia L. Rafal
Matthew H. Reeves
Maria R. Rublee
Sylvia K. Siegel
Katherine A. Sleasman
Jason R. Staiano+
Heather E. Stein
Michael P. Stinziano
Mariusz A. Sumlinski
Kristina Vajcnerova
Kimberly J. Vitelli

2005

Rima L. Adler
Lauren M. Alperstein
Elizabeth K. Bear
Justin Bevers
Dana S. Brody
Barry Cardin
Sarah B. Chase
Benjamin M. Daniels
Alicia M. Dillingham
John A. Donaldson
Laurie M. Ebertowski
Seth B. Egert
Christa Fornarotto
Trevor F. Gibson
Cassandra A. Good, PhD
Kristen L. Gyulafia
Richard E. Hekemian
Monica T. Holland
Matthew F. Honigman+
Jamila E. Jarmon
Oriana M. Korin
Emily C. Kowalski
Jill H. Kunkes
Dan LeClair
Andrew C. Ledbetter
Shaun E. Lenet
Caroline C. McGee
Samantha A. McGovern
Kelly D. McLaughlin
Rebecca A. Meyer
Megan E. O'Rourke
Colleen D. Paletta
Christopher R. Percopo
Richard A. Pugh
David M. Robinson
Sherri Rose
Lauren A. Schleyer-Hinchey
Katherine F. Smiles
Paul R. Stavast
Deborah O. Tisdale
Jennifer L. Tommervik

Monique A. Tronchin
Yao P. Tyus
Gina Wasserman
Vanessa M. Weisbrod
Amanda K. Wright

2006

Christine Y. Albert
Megan E. Angevine
Christopher R. Brooks
Shannon W. Bruce
Michael R. Calantone
Sean J. Cusson
Benjamin M. Daniels
Thomas J. Dion+
Edward T. Fish
Lauren G. Gatto
David S. Goodwin, M.D.
Ryan D. Johnson
Jonathan D. Kolker
Rachel C. Krefetz
Caiyi Lang
Bryn T. Lansdowne
Jennifer M. Leighton
Robert E. Levine
Melissa R. Maitin-Shepard
Kathryn E. Myers
Robert A. Osta
Alexandra P. Reilly
Vineet S. Sandhu
Zi-Xiang Shen
Dana P. Sherman
Sarah M. Sober
Edward B. Stautberg
Robert A. Tanen
Jennifer H. Wallerstein
Josef H. Weissfeld
Sarah E. Wheaton
Katherine A. Wilmes
Jordan M. Wolowitz

2007

Rima L. Adler
Garrett W. Austin
Felecia P. Ball
Caitlin L. Bearce
Carolyn R. Cleveland
Kathleen A. Coulombe
Allison J. Darrow
John H. Davis
Jason P. Dumont
Andrew D. Dunaway
Steven F. Eng
Hadass M. Gerson
Hilary D. Golston
Marybeth Grunstra
James E. Hess
Andrew D. Hodes
Rachel L. Hollander
Christopher S. Hsu
Jason A. Kane
Hyun S. Kang
Julia R. Kaplan
Maureen M. Kentoff
Garrett M. Kephart
Heather L. Kiefer
Matthew H. Kunkes
Jeffrey F. Leon
Marjorie H. Levine
Vivian Lock
Amber G. Marcellino
Justin T. Marshall
Geoffrey L. McKenna
Rosa-Lyn V. Morris
Graham T. Musynske

Jennifer A. Nedeau
Catherine T. Ngo
Amanda Norwich
Kelly A. O'Brien
Fred Pisoni
Jason A. Rizzi
Anna K. Sagal
Elizabeth A. Salerno
Erika K. Schnure
Laura I. Schultz
Joel D. Silver
Michael P. St. Julien
Richard V. Timme
Matthew W. Tisdale
Kelly Waldron

2008

Joseph A. Altenau
Curtis D. Bateman
Robert S. Bechtel
Maggie S. Beckham
Elliot B. Bell-Krasner
Emily M. Blair
Christopher M. Brown
Samuel C. Buchbinder
Alice B. Choi
Audra L. Clark
Christopher A. Colon
Cory S. Davis
Jeff J. DeMarco
Lauren Donnelly
Abigail P. Dunner
Daniel H. Else, III
Erica L. Evans
Stephanie E. Gardner
Anne R. Gilberg
Geoffrey H. Hainbach
Megan A. Haydel
Philip A. Kaminski
Jocelyn D. Kaufman
Joseph W. Kirschbaum
Daniel M. Klionsky
Sarah Lee
Adam P. Levy
Marie M. Loop
Anthony R. Pandolfo
Michael E. Riccio
Drew E. Rifkin
Marissa S. Rohrbach
Kaitlin E. Seeberger
James G. Skoufis
Erin L. Slocum
Rebecca M. Small
Ilana L. Spar
Neva C. Sypniewski
Mary E. Thibeault
Frederick Thide, Jr.
Rene L. Utianski
Robert P. Vacchiano
Brandy D. Vause+
Rachael E. Whitley
Aundrea M. Williford
Katherine A. Wilmes

2010

Aurora Felicia O. Amoah
Hannah T. Bearce
Katherine R. Connors
Amitis Darabnia
Alexandra S. Einhorn
Jonathan D. Flack
Cassall S. Graber-Tilton
Benjamin H. Hyman
Ellis J. Izlar
Maureen M. Kentoff
Kelly Y. Kim
Alana C. Krieger
Jason B. Levin
Amanda E. Lindner
Yong Ma
Lucy C. McCalmont
Danielle M. Meister
Claire E. Meyer
Evan R. Miller
Marissa F. Moran
David A. Nerenberg
Marcia L. Newbert
Lindsay D. Rosenwald
Diana Y. Sanchez
Joseph M. Sarreal
George E. Stewart, III
Kelley C. Stokes
Rosemary K. Tonoff
Adrianna M. Vorderbruggen
Richard A. Westerkamp
Drew L. Williams
Michael S. Wolfe

2009

Nada A. Abdelgadir
Emily M. Aden
Christopher J. Avallone
Daniel K. Barrow
Robert A. Barrow
Kyle M. Bird
Zachary R. Bolian
Lindsay M. Brooker
Laura C. Brooks
Elizabeth S. Cantor

Jenny L. Cooke
Caitlin A. Craumer
Ashley E. Dally
Amanda M. D'Amico
Cara T. Dolak
Zachary C. Dunseth
Sara M. Fellman
Jamie L. Jackson
Jack J. Jolley, III
Natalie R. Kaplan
Amanda B. Kaufman
Susannah M. Leahy
Claire I. Low
Fernanda C. Luppiani
Samuel C. Markowitz
Edmond T. Mingledorff
Blake A. Monson
Brittany L. Murphy
Lucas D. Nichols
Katherine R. Niswander
Emily B. O'Brien
Theresa S. Oliver
Sarah J. Peacock
Sandra M. Perez
Scott W. Perrygo
Joseph J. Radosevich
Bruce M. Rushing
Michael D. Sansone
Stephen C. Schohn
Julie M. Silverbrook
Julie E. Stofer
Marcy L. Taylor
Philip J. Taylor
Rosemary K. Tonoff
Mark T. Tripputi
Kimberly R. Weiss
Rebecca Wood

2011

Aurora Felicia O. Amoah
Hannah T. Bearce
Katherine R. Connors
Amitis Darabnia
Alexandra S. Einhorn
Jonathan D. Flack
Cassall S. Graber-Tilton
Benjamin H. Hyman
Ellis J. Izlar
Maureen M. Kentoff
Kelly Y. Kim
Alana C. Krieger
Jason B. Levin
Amanda E. Lindner
Yong Ma
Lucy C. McCalmont
Danielle M. Meister
Claire E. Meyer
Evan R. Miller
Marissa F. Moran
David A. Nerenberg
Marcia L. Newbert
Lindsay D. Rosenwald
Diana Y. Sanchez
Joseph M. Sarreal
George E. Stewart, III
Kelley C. Stokes
Rosemary K. Tonoff
Adrianna M. Vorderbruggen
Richard A. Westerkamp
Drew L. Williams
Michael S. Wolfe

2011

Marika Anastassiadis
Andrew M. Anderson

Colby C. Anderson
Kimberly J. Angus
Emily D. Archer
Adam C. Armstrong
Emily C. Baer-Bositis
Daniel X. Bandonj
Emanuel D. Banks
Sadie E. Banks
Molly C. Berger
Kathryn D. Boland
Benjamin C. Brodette
Dorian K. Brown
Taylor C. Carrington
Ashley R. Carufel
Pete Chattrabuthi
Kyle D. Cole
Sarah C. Conner
Anna W. Crabbe
April T. Crowder
Amitis Darabnia
Paul S. Dean
Ariel M. Deitch
Prairie-Willow S. Douglas
Max L. Drazdik
Arielle S. Dubois
Brittany E. Eborn
Bonnie J. Epstein
Nicholas A. Fabiani
Andrew B. Feldman
Tyler P. Fishbone
Carl P. Fisher
Benjamin H. Fitch
Chloe A. Furfine
Thomas M. Giannettino
Joseph A. Goldman
Andrew A. Gomella
Misty A. Gray
Alison T. Green
Emily T. Guthrie
Donald W. Hansel, Jr
Kyle C. Harbage
Rebecca H. Hill
Sarah E. Hoberman
Heather E. Hodder
Elizabeth F. Hoffman
Alexander D. Holt
Rachel M. Jacobson
Andrew M. Joelson
Audrey H. Joy
Nisha Kapur
Seth S. Katsoulas
Courtney A. Keiser
Genevieve M. Kermani
Bokeum Kim
Alexa K. Koenig
Jennifer R. Kuczynski
Carly M. Lagrotteria
Karissa S. Lake
Samantha Q. Lawrence
Dagny M. Leonard
Samuel R. Leverenz
Andrew E. Levitt
Chenfei Liu
Melissa R. Maitin-Shepard
Hadley D. Malcolm
Jillian D. Mallis
Jessica H. Mann
Morgan W. Manousos
Gabriella T. Marvin
Nichole C. Maynard
Ashley A. McDaniel
Kathleen E. McGinn
Alison A. McQuown
Sarah N. Mersky
Stephen T. Mollidrem
Alexander H. Mooers

Kelly E. Moynihan
Gregory T. Nanni
Emily B. Olmsted
Ahna E. Olson
Badryah A. Omar
Margaret L. Palmer
Anthony R. Pandolfo
Georgina M. Pappas
Melissa A. Passarelli
Andrew J. Perez
George R. Pierot
Alexandra T. Pinel
Santina E. Polky
Meera K. Ravichandran
Mekala S. Ravichandran
Alex Reustle

Nicole E. Ritter
Andrea M. Ropp
Mikal K. Rozenman
Angelica A. Sabintsev
Christine Sanford
Karishma Sani
Tal A. Schapira
Lindsay D. Schoen
Megan K. Schulte
Abynes M.G. Schulze
Julia D. Schwartz
Arun Selvaratnam
Kristina D. Sgueglia
Arnav D. Shah
Troy J. Shamos
Tiffany V.R. Shaw
Amani Sheikh
Rachel Spitz-Lieberman
James O. Springer
Nidhi Srivastava
Chelsea R. St. Onge-May
Mariela C. Stevenson
George E. Stewart, III
Sharon E. Strich
Alexandra C.A. Sugurel
Katerina P. Taketzis
Casey E. Tantum
Eric P. Thibault
Benjamin H. Toder
Lindsay S. Twiss
Madeline V. Twomey
Andrew G. Uihlein
Ellen M. Urbanski
Catherine E. Walsh
Paul E. Waters, III
Shannon R. Weigel
Elizabeth A. Weiss
Kimberly R. Wertman
Lauren E. Wilson
Sara A. Winters
Phillip S. Wiseman
Joshua S. Wolf
Rebecca Wood
Ariel E. Zeigler
Naomi M. Zuckerman

CURRENTS STUDENTS

Isabella S. Ackerman
Anna C. Benson
Paul M. Binkley
Anna L. Brenner
Jules R. Briant
Abigail D. Dimen-Taylor
Jamie L. Duncan
Megan C. Feeney
James D. Fortin
Mary Faye Fullam
Sesen S. Gidey
Lauren A. Ginarte
Elizabeth A. Glusman

Tylar J. Greene
Mariela B. Iacono
Natalie R. Kaplan
Katherine N.J. Karpf
Bijan Khodavandi, Jr.
Lauren E. Lacy
Katherine M. Marchione
Katherine E. Markham
Ahmad S. Mustafa
Brittany L. Segneri
Bianca V. Surita
Alison G. Tierney
Chloe M. Wilson
William S. Winebrenner

FRIENDS

David L. Allen
Anonymous
Steven H. Armstrong, Esq.
Edward V. Aversa
Justin C. Balsamo
Jeuli Bartenstein
Richard K. Baumert+
Gail J. Beagle
Joyce D. and Stephen S. Bell
Patricia Bell-Scott
Brenda L. Benadom
Maynard H. Benjamin
Laurette Bennhold-Samaan
John C. Blum
Susan B. Blumenfeld
Donna P. Bonner
Garet A. Bornstein
Glen D. Bottoms
Paul Bradford
Sandra and Steven Brody
Elmer T. Brooks
James J. Brooks
Nancy Broyhill
Doris Bryant
Judy K. Burnam
Mortimer M. Caplin+
Lynne J. Cardinal
Margaret L. Carkner
Claire J. Carpenter
Saundra M. Carter
Paula J. Causey
N. Joseph Cayer
David K. Chen
Carolyn T. and
Norman W. Chlosta
Howard A. Cohen, Esq.
Susan L. Coker
Marlys Conrad
A. George Cook, III, and
Marylou B. Cook
John F. Cooney
Bonnie S. Crosby
Gregory A. Currie
Jason S. Dalen
Helen F. Dalton
Benjamin M. and
Karla S. Daniels
Laurie David
Louis G. Davis
Preston A. Davis
Shelly E. Deavy
Emeric Deutsch
Lashawn O. Deville
Berry C. Dille
Michael A. Doctrow, Esq.,
and Ricci R. Doctrow
Cieu Lan L. Dong
John F. Donohue, Esq.+
Estate of Mary Louise
DonVito*
Joseph Dorinson

Carolyn R. Ducca
Claire D. Duggan*
Anne and Clark Dumont
Craig F. Eisenberg
David L. and Mary H. Elkind
Harold E. Engle
Joyce M. Farling and Kenneth
Edward Satten, Esq.
Joan and Mario Fattorini
Joan P. Fegan
Barbara L. Feinman and
Dennis F. Todd
Kaitlyn A. Ferguson
Keith D. and Pamela K. Ferris
Nicholas J. Ferris
Lisa A. and
Timothy J. Fetterhoff
Carly S. and Sebastian J.
Filgueira
Shirley M. Fine
Fern L. Fleckman
James T. Fralix, Jr.
Judith A. Frank
Estelle B. Freedman
Pie Frey
Daniel H. and
Jennifer A. Friedman
Claire F. Funkhouser
Lisa A. Fusillo
Robert Gay
Robert C. Gelardi
Richard C. Gentz
Gerard M. Gert
Sunday R. Glover-Cox
Sanford L. Gold
Doris M. and
Richard H. Goldman
Bonnie G. Gordon
Amy L. Goyer
Lisa T. Graddy
Phil and Wendy Gramm
C. Boyden Gray
Daniel Gray and Brooke Nuell
Bonnie J. Green
Grant S. Green, Jr.
Gail Gremse
James B. Gross, IV
Linda Grottko
Richard W. Groux, Sr.
Joan M. Guhne
Bobby R. Hall
Asa H. Hardison, III
Cheryl L. Heidel
Fraser C. Henderson, Sr., M.D.
Andrew C. Herron
Steven B. Herzberg
Carol B. Hillman
Richard K. Holliday, Jr.
Elaine M. Homann
Donald E. Horak
Marianne Irmiler
Jacqueline J. Isaacson
Linda B. and Paul M. Jacobs
Michael A. Jakob
Christopher C. Jennings
L. Eugene Jennings
Geraldine L. Jensen
Debra and Ralph Johnson
Richard A. Johnston+
Milyn Jordan
Thurman O. Jordan
Anne M. Jorgensen
George Kimsey
Julie J. Kimsey-Carroll
Don W. King
Michael R. Kirby
David B. Kivitz

Michelle R.A.M. and
Timothy A. Klein
Alan S. and Pilar G. Kline
Mary L. Kniffin
Bonnie B. Koblenz and
Michael R. Koblenz, Esq.
Nancy Kollisch
Stuart Kornfeld
Karen E. Kouagou
Peter B. Kovler
John F. Kozelitz
Jay R. Kraemer, Esq., and
Ruth W. Kraemer
Caitlin M. Kriek
Henrietta S.P. Kundert
Beverly Lashus
Shawn Law
Lisa M. Layman
Aino Z.S. Leedom and Charles
M. Leedom, Jr., Esq.
Deborah M. Lehr and
John F.W. Rogers
Carolina M. Leon
Daniel R. Levinson, Esq.,
and Luna L. Levinson+
James W. Lilly
Timothy J. Loney
Fernanda C. Luppiani
Krista M. Macari
David Macias
Elinor W. Magnuson and
Robert L. Magnuson, Esq.
Kieran R. Maher
John Maisel, Esq.
Tienry F. Mancuso
David L. Markham+
Franklin D. Marks
Josephine R. McCall
Wendy S. McClure+
Thomas E. McCullough
Patricia L. McDougal
Ronald A. McGuire
Elizabeth D. McIntyre
Joan F. McIntyre and Thomas
J. McIntyre, Jr., Esq.
Ann Marie S. McKay+
Claudette M. Melton
Eileen M. Miller
Alessia M. Miller and
Joseph T. Miller, Jr.
Joshua D. Montross
Sojung Y. Mosel+
Meredith K. Murphy
Patricia B. and Peter J. Murphy
Susan Musich
Meredith E. Neiman-Emmert
Ellen D. Nesheim
Beth W. Newburger
William H. Newell
Kevin F. Neyland
Josephine M. Nicholson
Mary E. Norton
Mary A. Nugent
Elizabeth B. O'Donoghue+
Jane M. and John M. O'Hara
G. F. Ohlstrom
Kerry P. O'Neil
Jay D. Owen, Esq.
Aurora K. Pajeau
John J. Palmieri
Nicholas B. Papadopoulos
Barbara G. Patton+
Ted D. Pelonis
Dawn A. Pepin
Lynn R. Perkins
Michael H. Persons
Anna P. Phillips

Beverly A. Pierce+
Matthew A. Plevelich
Ramnath and
Sangeeta Prasad
Ann E. Prescott
Susan T. Pritchett
Michael R. Purpura
Edward A. Quattrochi
Rana M. Rahim
Randy Randol
Edward T. and Katharine
M. Reynolds
Karen F. Ricci
Ronald L. and Shannon L. Rice
Mark E. Richter
Jim Rider
Arnold F. Rieder
Edelgard L. Rieder
Jamey Rieder
Stephanie E. Rieder
Maria del Pilar Rivera
William M. Roberts, M.D.
Arthur D. Robertson
Peter E. Rogers
Jean M. Rohland
Angelique S. Rose
Ashley E. Rose
Cheri L. Rosenberg and
Leonard L. Rosenberg, Esq.
Mindy E. Rudell
Nadia Sandi
Shelley F. Sarrin
Jane M. Sayer+
Carol F. Schembre
Frederick W. Schneider, III
Marilyn M. Schoenbaum
Minna E. Scholl
Robyn H. Schroth
Marcy F. and M
ark A. Schwartz
Neil M. Schwartzstein
Laura M. Schwarz
Myra Seaman
Jonas R. Searle
C. Glen Shaffer, Jr.
Diane and Thomas Sherman
Roman Shpak
Audrey Shropshire and
Walter Shropshire, Jr.
Shenghua Si
Kathy Skinner
Melissa T. Skolfield
Dolores S. Smith
Henderson S. Smith
Robert H. Smith*
Brenda M. Soares
Joan Spelman
Christopher J. Spielmann+
Seth G. Sprinkle
Marier E. Stapleton
Dorothy Steimel-Crespi
Annette D. Steiner
Atheena and
David B. Stetson+
Trudy S. Stevens
Nathan W. Stiewig
Susan W. Stinson
Thomas J. Swartz
Laurie Talcott
Crystal B. Taylor-Davis, M.D.
Peter M. Tchoukaleff
Melanie B. Tekirian
Raymond Thal, M.D., and
Stacey Thal
Trevor R. Tisler
John C. Titus
Edward L. Tomusiak

Diana L. Treadway
Marie E. Treanor
James A. Turner+
Barry C. Uhlig
Charlene D. Vaughn
Flavia Vehbiu
Thomas A. Verdecchio+
Van A. Viney
Reema R. Vora
Leon Wagner
Amelia G. Ward*
William Warren+
George R. Washington*
Carol N. and
William A. Watson
Linda E. and
Stephen K. Weisman
Kay Welty
Karin S. and Peter M. Wendzel
L. Carole Wharton
Stuart F. White
Jeanie Whiting
William J. Whitten
Joseph S. Wholey
Scott Widmeyer
Wilbur V. Harlan
Scholarship Trust
Janice W. Williams+
Katelyn D. Wills
Anne Wilson
Paul O. Wilson
Lisa W. Witzig
Stephon D. Woods
Victoria Wunsch
Ningxi Xu
Alma W. Yeomans
Cedric X. Yu
William N. Ziegler
Robert S. Zwirb+

CURRENT PARENTS

Peter J. Accetta
Marie and Reginald Achilles
Scot and Alexandra Ackerman
Lois F. and Leslie M. Alperstein
Andrea and David Altman
Ann M. Andrades
Ramez I. Andrawis, M.D.
Tod R. Angus
Anonymous
Diego A. Areces
Kenan Arnautovic and
Sanja Arnautovic, Esq.
Anna and Budd Arnott
Christine Attar and
Mohammed Attar, M.D.
Frank J. and Catherine S. Aucella
Nancy Aurora
Edward J. Austin
Amy L. Azarow and Robert
C. Azarow, Esq.
David Bacungan
William R. Baginski and
Karen A. Brezezicki
Donna Ball
Steven J. Ball
Elizabeth Barbera and
Joseph Barbera, M.D.
Patricia S. Barger
Graham J. Barkley
Tom M. Barton
Judith Baumel
Batmunkh Bayanduuren and
Enkhtuyaa Mueller, M.D.
Carl W. Becker
Jennifer and John Bell

Linda Berman and
Chi-Ming Koo
Laurie M. Brandt and
Jay A. Koslof
Eric and Tami Brauer
Nancy A. Breslin, M.D.,
and Peter J. Caws
Thomas C. Brewer
Holly and Stephen Brooks
Eric E. Brown
David E. Brunori, Esq., and
Elisse K. Brunori
Adoracion Z. Camacho
Joseph G. Cardile
Jill and Jonathan Carey
Marian D. Carey
Katherine R. Carpenter
Peter R. Carroll
Steven M. Cassidy
James Cavallo
Josephine and Natale
Cervoni
Timothy J. Charlton
Miae and Sung Cho
Irvin Chou
Subhash R. Choxi
David H. Clark
Alan S. Cohen
Chris and Kathleen Collins
James and Linda Connelly
Robert Contillo
Kim and Rob Coretz
Mark A. Costa
John E. Costigan
Eddie and Julie Creamer
Daniel P. Curran
Sherri Curtis-Banks
Don A. and Susan J. D'Adesky
Judith W. Daniel
Richard D. Davis
Daniel K. and Deborah L. Day
Roger and Sharon Delzer
Tigist S. Denboba and
Worku T. Mulattu
Douglas H. Desaulniers
Terrence A. Dixon
Jerry and Renne Dodd
Richard D. Donovan
Lynn T. and William G. Dorse
Michael and Wendy Doyle
Sheri B. Dreyfuss
Tommy J. Ducklo
Gail M. Duffney Cirillo and
Stephen E. Cirillo
Peter R. Dunn
Scott E. Edwards
Paul S. Eisenberg
Alexei A. and Elena D. Eliseev
Maurice Elmalem
Richard T. Emanuele
Monique M. Exposito
Jeffrey and Melissa Fastov
Janis D. Fee, M.D., and
Martin J. Fee, M.D.
Patricia M. Feeney and
Rhett K. Schwent
Paul L. Feldman
J. Christian and
Paula S. Fenger
Joseph C. Ferguson
Tylor Field, II
Harriet and Marc Finkelstein
Bruce A. Fleishaker
Thomas R. Flickinger
Tomas Flores
Joanne E. Foodim, M.D.,
and Robert P. Forbes

honor roll

Carl Franzetti
 Jamie L. and Anthony M. Freedman
 Richard and Jill Freedman
 Steven D. Frenkil, Esq.+
 David Friedman
 Mark Friedman
 Karen A. Fucentese
 Howard S. Furman
 John T. Gaffney, Esq.+
 John D. Galligan
 Dominic N. Gallo
 Dorota and Robin Gardy
 Franklin R. Gee
 Markus Geissler
 Joseph A. Ginarte, Sr.
 Lisa F. and Stuart S. Ginsberg
 Charles G. Gladston and Elaine M. Souza
 Dana S. Glance
 Stephen Glascock and Barbara Van Beuren
 Frank M. Goetz
 Hedwig and Robert Golant
 Richard W. Goldschmidt
 Scott Gorelick
 Kathleen L. and Richard C. Grainger
 Elizabeth and Evan Granoff
 Jay and Noreen Granucci
 Karen E. Grinthal
 Edward J. and Kathryn L. Gutleber
 Karen S. and Paul J. Guy
 Parviz Hadjililoo
 Charlotte Hagan and Robert Hagan, Esq.
 Eric and Linda Haigh
 Deborah Halber and Bill Wittenberg
 Bruce W. Halliburton
 Khurram K. Hanif, M.D.
 Cynthia J. Heap
 Josephine D. Heard
 Roger A. Heldman
 Venus Henderson
 Stephen R. Hildrich
 Matthew J. Hinkey
 Ellen F. and Thomas H. Hoberman
 Paul S. Hoffner
 Marjorie F. Holler
 William G. Holman
 John P. Horton and Heidi S. Rankin
 Gerard and Patricia Horvilleur
 Howard Horwitz
 Gary Hurewitz
 Victor Imbimbo
 Charles J. Ingoglia
 Deborah Inman
 Charles E. Izlar
 Raymond Johnson and Martha Vaananen
 Dale and Marcie Kalina
 Louis A. Kaplan
 Steven L. Kaplan
 Andrew P. Keaveney
 Janet C. Kedzie
 Mark A. Kelsey
 Beth and Paul Kent
 George J. Kieley

Patricia Knapp
 Marc M. Kotler
 Arthur and Susan Kremer
 Barry Kringstein
 Kerry L. Kuhn, M.D.+
 Robert T. Langan
 Liz Lauren-Oser and Aaron Oser
 Frederick T. Lawson
 Heidi L. Lawyer
 Laura M. Le Blanc
 Darrel and Maria LeCloux
 Steven J. Leibach
 Melody Lesser and Charles Riess
 Elizabeth M. and Robert M. Levine
 Paula K. and Steven A. Levine
 Stafford H. Lewis
 Brenda and Paul Lilly
 Anthony and Marlene Lisuzzo
 Mary Longe
 Dulce A. and Paul M. Lopez
 Min Hua Lu and Yunlin Zhou
 Steven Lusk
 Charles P. Luttmann
 Gigi G. Lynch and Melvin C. Lynch, Jr.
 Patrick T. and Stacy J. Lyons
 Peter F. Madonia
 Emily A. Maitin
 Gregory B. and Sheila G. Malmberg
 Barbara and Paul Malone
 Stephen D. Manners
 Sarah M. Manning
 William H. Manning and Ruth A. Mickelson
 Eileen L. and Eric S. Marcus
 Ellen M. Marden
 Patrick F. Mathias
 Harry J. Mauchet and Deborah A. Raven
 Irene Maury
 Melissa H. Maxman, Esq., and Glenn B. Marcus
 Howard S. McCutcheon
 Jeanne L. and Terrance P. McDonnell
 William Medley
 Ruth Mendoza
 Stephanie Meyers-Roche and Joseph Roche
 Diana S. Millman
 Lauren J. Mitchener
 Madeline S. and Michael G. Moran
 Stanley P. Mordensky, Sr.
 Margaret K. and Stephen F. Moss
 Joan Motayne
 James Murrin
 Timothy M. Murtha
 Robert D. Neill
 Hobart J. Nichols
 Leigh and Robert Noel
 Richard F. and Robin M. Nourie
 Irena and Wojciech Nowosadko
 Zwelakhe N. Ntshepe
 Shawn P. O'Brien
 Robert W. and Thu-Hang H. Ogburn

E. Magnus and Elspeth Ohman
 Michael K. and Susan O'Neill
 David G. and Patricia Orsini
 Julio E. and Luisa A. Ortiz
 Stuart A. Ostrowsky
 Joseph M. and Kathy J. Pacheco
 Peter C. Palsen
 David L. Parks
 Barbara M. Parry
 Sangita V. and Vandan R. Patil
 Idolidia B. Paula
 Kerin and Miguel Pena
 Frances and James Pergamo
 Deborah B. Perlmutter and Phillip A. Witman
 Kenneth Phalen
 Katherine D. and John L. Phillips
 Tania S. Phillips
 Dennis J. Picard
 Douglas K. and Randi Pleskow
 James H. Porter
 Mark A. Posner
 Andrew M. and Izabella G. Pulvermacher
 Anil and Anjana Puri
 Michael J. Quinn
 William R. and Victoria R. Rate
 Michael R. Read
 Judith A. Reaven
 Kathleen M. Renck
 Joseph M. Rendeiro
 Antonio and Maria Flora Reyes
 Malcolm C. Rich
 David and Karen Rosenberg
 David M. Rosenblatt
 Jessica Rubio
 Charles T. and Veronica Saldarini
 Daniel M. and Marianna Salerno
 George D. and Graciela M. Santopietro
 Debra L. Sardella
 Carl G. and June A. Sceusa
 Alan M. and Phyllis Schapire
 Barry M. and Joan E. Scheinfeld
 Michael J. and Raffaella Schnurr
 Jeffrey L. and Stephanie R. Schreider
 Aram H. Schroeder
 Diana Schutter
 William Schutter*
 Patty L. Schwartz and Matthew J. DeSimone
 Jean Marie and Vaivos Sdogos
 George Seide
 Alan D. and Amy D. Seifer
 Sandra L. Seiler
 Richard L. Seltzer
 Francis N. Serra
 Matthew G. Radek and Katy Sexton-Radek
 Joseph and Nancy L. Shanahan
 Barry J. Shemaria
 Robert I. Siegel
 Miriam and Mitchell Silverman
 Nardeo Singh
 Angela M. Sisto
 Patricia B. Smalls

Donald J. and Susan F. Smith
 Patricia S. and William Snyder
 Kevin M. Sossin
 Michelle and Steven R. Sparks
 Melchoir H. Springer
 Christine and Robert Staub+
 Jonathan M. Sternlieb, M.D.
 Mario J. and Carol M. Strafaci
 Mariann and Steve Stronsnider
 Kevin R. Szen
 Jose Tesone
 David Thomas
 Suzanne R. Thomas+
 Ellie H. and Robert K. Thompson
 Gary Tolchin
 Jose L. and Raquel Torres
 Vu H. Truong
 George T. Urch
 Rhett Van Paepegem
 Lutchumanen and Vijaiya Veeramoorthoo
 Catherine M. Walls and William J. Walls, Jr.
 Benjamin S. Warren
 Hal S. and Lisa Wasserman
 Audrey and Theodore M. Weinberg
 Laura N. and Neil A. Weiner
 Lawrence P. Weingarten
 Wayne Welch and Loie Williams
 Lisa M. Wiggs
 Robert and Susan Wilson
 Kurt and Stephanie Wimmer
 Joseph C. Winkelmann
 Elise and James Woodard
 Walter Yakimowicz
 Lane D. Ziegler
 Mark L. Zusy
 Jay L. and Linda Zwicker

FACULTY AND STAFF

Robert Adcock
 Anonymous
 Gordon Avery, M.D.
 Robert P. Baker
 Joseph Barbera, M.D.
 Peg E. Barratt
 J. Howard Beales, III+
 Justin Bevers
 Sarah A. Binder
 Paul M. Binkley
 David V. Bjelajac+
 Charlotte G. Boston
 Christopher R. Brooks
 Shelley B. Brundage
 David E. Brunori, Esq.
 Fran Buntman
 Helen K.R. Burgman
 Jerome W. Canter, M.D.
 Peter J. Caws
 Pamela Cicetti
 Margaret K. Cohen+
 John B. Conway
 David P. Costanza
 Ingrid E. Creppell
 Daniel A. Cronin
 Lawrence E. Culleen, Esq.
 Abigail Custis
 Ryan J. Dellolio
 Christopher J. Deering+
 Angeline DiSarno
 Stephen C. Dopkins
 Paul B. Duff
 Thomas F. Dwyer

Maurice A. East
 Daina S. Stukuls -Eglitis
 John Ehrman
 Nina L. Ellis
 Robert M. Entman
 Amitai Etzioni+
 Mohammad H. Faghfoory
 Rachel M. Firgens
 Jamie L. Freedman
 Michael G. Freedman
 Michael G. Gallagher, Esq.
 Linda M. Gantt
 Robert N. Ganz, Jr.
 Christina B. Gee
 Robert S. Goldfarb
 James M. Goldgeier
 Margaret R. Gonglewski
 Bruce Gregory
 Kimberly A. Gross
 Carl F. Gudenius+
 Roy J. Guenther
 Shoko Hamano
 Jay T. Harder
 Clare A. Heberg
 Charles Herber
 James E. Hess
 Peter P. Hill
 Rebecca H. Hill
 Virginia A. Hodges
 Joi L. Howard
 John R. Huennekens
 Terry L. Hufford+
 Loring J. Ingraham
 Bryant J. Ingram
 Helene D. Interlandi
 Susan L. Karamanian
 Louis H. Katz+
 James E. Kee, Esq.
 John B. Kendrick
 Maureen M. Kentoff
 Alfred N. Khoury, M.D.
 Dina R. Khoury
 Young-Key Kim-Renaud
 James C. King
 Michael M. King
 Arthur Kirsch
 Judith Kirsch
 Peter A. Konwerski
 Sharon F. Lambert
 Robert T. Laycock
 James H. Lebovic
 Dan LeClair
 Frank X. Lee
 Donald R. Lehman
 Matthew S. Lindsay
 Helen N. Spencer+
 Diana L. Lipscomb
 Robert W. Luke
 Yong Ma
 James J. Mahshie
 Forrest A. Maltzman
 Karen J. McCoy
 John M. McGlasson, III
 James A. Miller
 Blake A. Monson
 Melissa L. Monson, M.D.
 Philip J. Moore
 Colleen S. Morith
 Martha Morris-Shannon+
 Michael J. Morsberger
 Yael Moses+
 Faye S. Moskowitz+
 Kathryn Newcomer+
 Melissa S. Nyman
 Kelly A. O'Brien
 Malachy O'Connell

Lynn R. Offermann
 Randall K. Packer+
 Anthony R. Pandolfo
 William C. Parke
 Ellen L. Parkhurst
 Theodore P. Perros+
 Rolf A. Peterson
 Daniele S. Podini
 Paul J. Poppen
 Marie D. Price
 Cadence Roberts
 Rick D. Robertson
 Edward M. Robinson
 Cynthia A. Rohrbeck
 Leah Y. Rosen
 Theodore H. Rosen
 David A. Rowley
 Richard A. Ruth, IV
 Dennis E. Schell
 William E. Schmidt
 Amy D. Schwartz
 Lois G. Schwoerer+
 Carol K. Sigelman+
 Myeong-Ho Sohn
 Keturah S. Solomon
 Michael A. Steelman
 Kathleen A. Steeves
 Christopher W. Sten
 Melissa J. Stires
 Michelle Stock
 Barbara L. Tesner+
 Stephen J. Trachtenberg+
 Robert G. Trumbull, III
 William G. Turner
 Lorraine A. Voles
 Paul J. Wahlbeck
 Tara G. Wallace
 Danielle Weaver
 Michael W. Weeks+
 Richard A. Weitzner, Esq.
 Helen R. Weldon
 William S. Winebrenner
 Philip W. Wirtz
 Rebecca Wood
 Phyllis Zhang
 Alyssa N. Zucker

CORPORATIONS, FOUNDATIONS, AND INSTITUTIONS

American Cancer Society
 American Society of Newspaper Editors+
 ARCS Foundation, Inc.+
 Blum-Kovler Foundation
 Caplin Foundation+
 Chamber of Commerce of the United States
 Charles G. Koch Charitable Foundation
 Charles Schwab & Co.
 Coretz Family Foundation
 Columbian Women of GWU
 Critical Path Systems, Inc.+
 David Bruce Smith Family Foundation
 David Friedman Private Foundation
 Dayton Foundation Depository, Inc.+
 Design Studio, LLC
 Distilled Spirits Council of the United States, Inc.
 Distributed Sun
 DuPont de Nemours & Company
 Elderhostel, Inc.

Ethics and Excellence in Journalism Foundation
 ExxonMobil Corporation
 Facing History and Ourselves National Foundation, Inc.
 Fannie & Stephen Kahn Charitable Foundation
 Federal Focus, Inc.
 Federal Management Systems, Inc.
 First Solar, Inc.
 GE Foundation
 GEHA
 GEICO Corporation
 General Motors Corporation
 H.O. Peet Foundation
 Hospital for Sick Children
 J. K. Mullen Foundation
 Jennifer Schoeche Memorial
 John Herbert Company
 John Templeton Foundation
 Justice-Columbia Lodge No. 3, F.A.A.M.
 Lincoln First Marketing Services Inc.
 Lockheed Martin Corporation
 Mayo Clinic
 Microsoft Corporation
 Moving Forward
 National Geographic
 National Philanthropic Trust
 National Science Foundation
 Noblis, Inc.
 Prasad Family Foundation Inc.
 Protea Biosciences, Inc.
 RD Jones & Associates, Inc.
 RBC Royal Bank
 Regions Financial Corporation
 Richman Family Foundation
 Robert H. Smith Family Foundation
 Rubicon Property
 Steel Associates LLC
 Tawani Foundation
 The Communitarian Network
 The Dow Chemical Company
 The Eleanor Roosevelt Conference Committee, Inc.
 The Metropolitan Neurosurgery Group, LLC
 The Richard Eaton Foundation, Inc.+
 The Roberts Foundation
 The Searle Freedom Trust
 The Sidney, Milton and Leoma Simon Foundation+
 The Sloane Family Foundation
 The Sunshine Lady Foundation, Inc.
 The Wicks Group, PLLC
 The William I. and Patricia S. Snyder Foundation
 Tides Foundation
 Together 4 Kidz
 TruForensics, LLC
 Universities Space Research Association
 van Beuren Charitable Foundation
 White House Correspondents' Association
 William Nelson Cromwell Foundation+

In Remembrance

We note with regret the passing of the following members of the Columbian College community:

Distinguished and Emeritus Professor of Physics **Herman Hedberg Hobbs**, BS '53, MA '55, spent more than three decades at GW teaching quantum physics, solid-state physics, and astronomy. He received the 1986 Columbian College Award for Excellence in Teaching, and two service awards and four certificates of appreciation from the Alumni Association. The former physics chair served on numerous university councils and committees. His research interests were in the area of metal-whisker crystal growth.

Eva Jospe, professor in the Department of Religion for nearly three decades, died in January in Jerusalem at the age of 97. An esteemed colleague and effective and beloved teacher with a warm, caring approach to her students, Jospe was renowned for her work as an editor and translator of the works of Martin Buber, Franz Rosenzweig, and Hermann Cohen.

Thelma Z. Lavine, the Elton Professor of Philosophy from the mid-1960s to 1985, is remembered for the excitement

she brought to the classroom—always dramatic in manner and always patient and generous with her students. Described as “an evangelist for philosophy” in a *Washington Post* profile, Lavine’s best known work, “From Socrates to Sartre,” began as a 30-part series of her lectures initially broadcast on Maryland Public Television and later shown on PBS stations across the country.

Fervent supporter of literature and the arts, and a lawyer by profession, **Ronald E. Pump**, BA '64, was a founding member and then valued emeritus member of Columbian College’s National Council for Arts and Sciences. His philanthropy included a significant gift to establish The Ronald E. Pump Endowed Scholarship Fund to support Columbian College students in need of financial assistance.

Raymond E. Thomas, BA '55, MA '57, MPhil '71, professor emeritus of statistics, joined the faculty full-time in 1957 after receiving his master’s in statistics. From 1964 to 1974, Thomas served as director of the GW Academic Computer Center. He later returned to teaching statistics and computer science before retiring in 1991. An avid tennis player, he spent some of his free time teaching the game at GW.



“WILL THERE BE POETS TOMORROW TO SOOTHE THE MINDS, ARTISTS WHOSE CANVASSES CAPTURE THE BEAUTY AND NUANCE OF THE HUMAN SPIRIT, OR NOVELISTS WHO ENRICH AND EXCITE OUR IMAGINATION?”

RON PUMP ALUMNUS AND PHILANTHROPIST

Associate Professor Emeritus of English **William L. Turner** was an active member of the GW community for more than four decades. He joined the English Department in 1941 and served as an assistant dean before retiring in 1976. Turner was a founding member of the GWU Faculty Club and the GWU Society of the Emeriti, and a docent at the Hillwood Museum and Washington National Cathedral.

Professor Emeritus of English **Edward R. Weismiller**, a renowned expert of John Milton’s poetry, gifted writer, and Rhodes Scholar, came to GW in 1968 and enjoyed a long and distinguished career before his retirement in 1980. His numerous awards and accolades include the Yale poetry prize, a Guggenheim Fellowship, and the 2001 Robert Fitzgerald Prosody Award for lifetime contribution to the study of metrics and versification.



THE GEORGE
WASHINGTON
UNIVERSITY
WASHINGTON DC

Columbian College of Arts and Sciences
Phillips Hall, Suite 212 • 801 22nd Street, NW
Washington, D.C. 20052

www.columbian.gwu.edu
ccasnews@gwu.edu

MAKE A DIFFERENCE:

Support the Arts & Sciences

Do You Own Property?



- Do you have property that is a burden to manage?
- Do you own property you don't use anymore or may not need someday?
- If you sell a property, will you owe significant taxes?

If so, GW can help. By donating real estate to GW, you can achieve peace of mind, create a lasting legacy in support of the Columbian College of Arts and Sciences and receive financial benefits for yourself or someone else.

What's in it for you?

Depending on the nature of your gift and your objectives, you could:

- Avoid capital gains taxes on appreciated property
- Eliminate the burden of maintaining and paying for the property
- Provide yourself with an annual income
- Continue to use the property for the remainder of your life
- Reduce your estate and income taxes
- Help the Columbian College program of your choice

GW accepts many types of property including residential and commercial property, and undeveloped land.

THE GEORGE WASHINGTON UNIVERSITY
COLUMBIAN COLLEGE
OF ARTS AND SCIENCES

For more information, please contact
**Chase Magnuson, Director of Planned
Giving for Real Estate at 202-994-4979**
or chasem@gwu.edu.

The George Washington University
Office of Planned Giving – Real Estate
2100 M Street, NW, Suite 310
Washington, DC 20037