



Sileby Town Cricket Club Est. 1895
Mill Lane, Sileby, Loughborough, Leicestershire LE12 7NF



SILEBY TOWN CRICKET CLUB RETURN TO PLAY COVID-19 RISK ASSESSMENT FOR MATCH AND TRAINING DAYS - HOSPITALITY FACILITIES AND CHANGING ROOMS AVAILABLE DURING STEP 3 OF THE RETURN TO CRICKET ROADMAP

STCC Covid-19 Risk Assessment

As a facility provider, Sileby Town Cricket Club have considered and assessed risk based on our activity, including (but not limited to) Facility Capacity, People management and communication, hygiene and first aid. STCC have accounted for match play and other organised activities, use of toilet facilities, managing people, managing buildings and paramount has been returning to cricket playing as safely as possible.

www

www.silebytown.com



[silebytowncc](https://www.facebook.com/silebytowncc)



[silebytown](https://twitter.com/silebytown)



[silebytown](https://www.instagram.com/silebytown)



Sileby Town Cricket Club Est. 1895

Mill Lane, Sileby, Loughborough, Leicestershire LE12 7NF



What are the hazards?	Transmission of COVID-19	
Who might be harmed?	Facility users, staff, volunteers, visitors, and the wider community	
	Controls required	Action Taken by the Club
Facility Capacities		
	Have you determined the safe capacity of your field of play and grounds for both organised cricket activity and off-field activities (subject to the Rule of 6 or as a group made up of two households), accounting for social distancing, legal gathering size limits and supervision ratios where applicable?	<p>Maximum capacity of 140 individuals on the ground at any time split across 4 nets and small groups around outfield space made up as below:</p> <ul style="list-style-type: none"> • Maximum of 8 individuals (plus 1 coach) per net lane – social distancing must be observed. • Small groups (suggested max of 6 where possible) undertaking game based and fielding practice – social distancing must be observed. • Maximum of 36 across 4 nets + Max of 104 undertaking fielding activities <p>Spectators are now allowed in Step 3, only players and parents required to stay for safeguarding reasons and only 1 per child (up to 17 years old).</p>
	Have you determined the safe capacity of your net practice facilities accounting for social distancing and legal gathering size limits?	Maximum of 8 participant (plus 1 coach ~ max of 32 players across 4 nets + 4 coaches where required). STCC has capacity for 4 nets, 2 adjacent nets where special care to social distance MUST be observed. These nets will be reviewed upon use, if not deemed capable of observing social distancing guidelines, these nets will be limited to smaller numbers. Individual roll-on nets available to use on the NTP areas of the square.
Organised activities		
	Have you reviewed the playing guidance and made suitable adaptation to your approach to practice and matches?	Yes, STCC is large enough in playing area to allow match play and training to take place safely and coaches/managers and captains will be responsible for appropriate spacing to not cross over into another groups dedicated space.
	Have you reviewed supervision ratios and adapt group sizes for supervised children's activities accordingly? Have you ensured safeguarding procedures are being followed, even under COVID restrictions?	All coaching ratios will be observed, and practice will be limited to adhere to ECB Coaching ratios, based on the activity taking place. Parents and Spectators are now allowed on site and will be signposted to the relevant areas to view from.



www.silebytown.com



silebytowncc



silebytown



silebytown



Sileby Town Cricket Club Est. 1895

Mill Lane, Sileby, Loughborough, Leicestershire LE12 7NF



Have you assessed control measures for preventing spectators (with limited exceptions – see guidance?)	Spectators are now allowed at cricket matches and training. Spectators are informed to not exceed socially distanced groups of 6 and asked to remain a safe distance from the players areas.
People Management and Communication	
Establish what restrictions are in place for your venue location including restrictions on gathering size limits in line with the UK Government Roadmap and ensure your control measures are appropriate.	Government guidance has been consulted to ensure appropriate messages are provided to all attending or providing lifts to and from Sileby Town CC. This risk assessment will be available on the Sileby Town CC Website (www.silebytown.com) and updated in accordance with the ECB Return to Play Roadmap. STCC Social channels will be utilized to signpost to this information also. Key points highlighted to all members via WhatsApp message and pitcher notifications
Self-screening of individuals before they arrive at the venue to ensure individuals displaying COVID-19 symptoms or those who should be shielding do not travel or attend.	Regular communication to all members, access to Risk Assessments and user guides are all available on the website as well as signage. Members asked to undertake temperature checks where possible before leaving home and informed that if they present symptoms of Covid-19 they must stay at home and seek medical support.
Ensure that NHS Test and Trace data collection system is in place and that it is compliant with Information Commissioner's Office guidance.	NHS Test and Trace QR Codes are displayed on buildings where access is allowed. Paper based registration forms are available where individuals do not have the NHS Test and Trace app installed/available. Paper based information will be destroyed after 21 days.
Ensure that your NHS QR Code poster has been produced and displayed for use by visitors.	NHS Test and Trace QR Codes are displayed on buildings where access is allowed.
Have you updated your NHS Test and Trace contact detail collection and record keeping process to include casual spectators that might come into contact with players etc?	Clear signage requesting spectators to scan QR codes or completing paper based track and trace forms where spectators don't have the NHS Covid-19 app.



www.silebytown.com



silebytowncc



silebytown



silebytown



Sileby Town Cricket Club Est. 1895

Mill Lane, Sileby, Loughborough, Leicestershire LE12 7NF



	An assessment of user numbers, space capacities, venue circulation and layout planning to maintain social distancing.	Completed, no more than is necessary (including coaches and officials) active during matches and training. Spectators are now allowed. Space designated for players and officials away from each other. Maximum of one person per toilet at a time inside buildings for toilet access including club volunteer for cleaning purposes, social distancing measures to be observed at all times when waiting for toilet to become vacant.
	A plan for where parents and players will sit whilst watching cricket activities.	Benches spaced well around the boundary, Player area marked clearly for parents and spectators to avoid and reduce risk of crowding. Spectators are now allowed and asked to bring camping chairs and blankets etc. to easily enable social distancing
	Signage and communication so that all participants and visitors are aware of the control measures in place and how to act appropriately to minimise the risk of transmission of COVID-19.	Signage displayed around the ground to support advice given ahead of play. Indoor one-way system implemented and clearly marked. Signage attached as appendices to this document.
	Staff and volunteer training to support the implementation of the plan, with suitable training records.	All captains, coaches, and volunteers to be briefed on the Risk Assessment strategies. Physical walk through for players before matches take place, ensuring players know what to expect. All volunteers to be made aware of the protocols in place for hospitality and service functions.
Buildings		
	Assess ventilation in your building (natural and mechanical) and take appropriate measures to maximise ventilation and minimise risk of transmission.	Enough Space for ventilation, Door to stay open when practical to enable ventilation and reduce touchpoints on door handles etc. Visitors expected to vacate the building as soon as practical.
	Assess the maximum occupancy of your rooms at in order to ensure social distancing and establish a suitable circulation system/one-way system. Use signage and floor markings to communicate this.	Maximum of 2 individuals from different households allowed indoors in the main room of either pavilion (excluding volunteers). This will only be for Female toilets; male toilets will be accessed via the scoreboard or back door to pavilion on ground 1, ground 2 Accessible toilet to be used for spectators. Players changing rooms house players toilets. Individuals MUST leave building once toilet vacated. One-way system implemented.



www.silebytown.com



silebytowncc



silebytown



silebytown



Sileby Town Cricket Club Est. 1895

Mill Lane, Sileby, Loughborough, Leicestershire LE12 7NF



	Assess the arrangement of seating areas to maintain social distancing and minimise the risk of transmission.	No seating indoors. Visit the toilet and leave the building immediately. Outdoors – parent encouraged to bring own chairs from home (Camping chairs etc) to seat themselves in accordance with social distancing guidelines. Static benches spaced around the ground detailing signage to observe social distancing measures.
	Consider your wet weather plans and describe what actions you will take to maintain social distancing in wet weather.	Wet weather area for players is available on both grounds (Gazebos on ground 2, providing social distancing can be observed. People to return to their own cars if insufficient space. GATHERING INDOORS MUST NOT HAPPEN. Indoor space only to be used in exceptional safeguarding circumstances.
Social and Hospitality Areas		
	Have you read and understood the requirements of the government guidance for restaurants and bars available here?	Yes, Table service will be in operation, A text message service will be used for ordering drinks from the bar with the SMS number placed on tables to allow ordering to take place when seated. Ordering drinks will not take place from anywhere other than tables. Hospitality remains outside only at this stage.
	Have you put in place a food and beverage service plan that conforms to the requirements of the government guidance for restaurants and bars available here?	All drinks will be ordered via SMS messaging service and served while seated. Patrons will be expected to order from the table using the SMS message number placed on each table. Patrons can make payment at the payment counter via contactless card payment method then must return to the table to await confirmation that their drinks are on the way. Food can be purchased when the BBQ is in operation. Orders can be placed via the SMS messaging service, payment made at the payment counter and food served at the tables, food being consumed while seated.
	Have you assessed the safe capacities for table service of food and beverages indoors and outdoors (subject to social distancing and legal gathering size limits)?	Table service remains outdoors only. This will continue to operate 16 tables available to cater for 6 at each. Capacity for 96 individuals across those tables although it is expected that smaller table groups will be present and could spread out to encourage greater distancing between groups.
	Have you a plan in place to serve take-away food and alcohol that takes into account social distancing?	Take away food and drink will not be in operation.



www.silebytown.com



silebytowncc



silebytown



silebytown



Sileby Town Cricket Club Est. 1895

Mill Lane, Sileby, Loughborough, Leicestershire LE12 7NF



Have you reviewed your food and beverage service plan to ensure that it is compliant with your premises license or club premises certificate for the serving of alcohol?	Plan put in place is fully compliant with Sileby Town Cricket Club's premises license.
Have you updated your cleaning plan to include food and beverage preparation, service and consumption areas?	Cleaning plan has been updated to include food and beverage preparation as well as service and consumption area. Tables cleaned after each use between guests being seated.
Have you updated your staff/volunteer training plan to include the requirements of your food and beverage service plan?	Training plan updated to ensure all volunteers are aware of the expectations for hospitality service.
Have you updated your signage and communications plan to include the requirements of your food and beverage service plan?	Signage is updated to incorporate food and beverage service.
Have you updated your assessment of PPE requirements and provision to include the requirements of your food and beverage service plan?	Sufficient PPE provision on site, all volunteers serving food and beverage will be updated on expectations around PPE and serving food and beverage.
Have you reviewed and updated your COVID risk assessment to include your food and beverage service plan and the above?	All updated and accounted for in this document.
Have you communicated your updated COVID risk assessment and plans?	Updated plan and Risk assessment available via our website (www.silebytown.com) and shared with visiting clubs in conjunction with a visitors guide during STEP 3 of the Covid-19 return to cricket roadmap.
Hygiene and Cleaning	
Develop an appropriate cleaning plan	A cleaning plan has been established and all captains and players are aware of their collective responsibilities. The plan includes: <ul style="list-style-type: none"> • Initial Deep clean prior to opening • Operating day pre and post cleaning protocols • Operating day high frequency touch point cleaning protocols



Sileby Town Cricket Club Est. 1895

Mill Lane, Sileby, Loughborough, Leicestershire LE12 7NF



	Materials, PPE, and training that you have provided to your staff for effective cleaning.	All club captains, coaches, and volunteers to attend an online meeting to be briefed on the Risk Assessment strategies. On site record with Captain's checklist and game opening procedure to be completed at the beginning and end of each use.
	Provision of hand washing facilities with warm water, soap, disposable towels, and bin.	Players encouraged to have their own hand sanitizer. Hand sanitizer, gloves, face masks are all available to volunteers and groundsman on arrival at the ground.
	Provision of suitable hand sanitiser in locations around the facility to maintain frequent hand sanitisation.	Hand sanitizer, gloves, face masks are all available to volunteers and groundsman on arrival at the ground.
	Provision of suitable wipes and hand sanitiser on the field for hygiene breaks.	Hand sanitizer, anti-bacterial wipes and spray are all available to players, volunteers, and groundsman on arrival at the ground.
	Have you assessed safe capacity level for outdoor hospitality areas?	STCC have planned for a capacity of 96 individuals able to consume food and/or beverage via 16 tables in groups of no more than 6.
	Have you risk assessed the table and takeaway service of food and beverage?	Table service has been risk assessed, no takeaway service is in operation at STCC.
	Have you risk assessed the PPE requirements for food and beverage table and takeaway service?	STCC have ensured adequate PPE provision to cater for increased demand during STEP 3.
	Have you included the cleaning of seating areas in your cleaning plan?	Regular cleaning before each new use will be maintained to minimize the risk of infection between patrons.
	Have you included the cleaning of changing rooms and showers in your cleaning plan?	Cleaning of Changing Rooms and shower areas included in cleaning plan
What are the hazards?	Other venue hazards to be considered after temporary closure such as Legionnaire's Disease, fire, electrical safety etc.	



www.silebytown.com



silebytowncc



silebytown



silebytown



Sileby Town Cricket Club Est. 1895

Mill Lane, Sileby, Loughborough, Leicestershire LE12 7NF



Who might be harmed?	Facility users, staff, volunteers, and visitors	
Controls required	Action Taken by the Club	
Preparing Your Buildings		
	Consider the risk of Legionnaire's disease and carry out necessary work to make your water supply safe for users. Refer to the specific guidance in the document above.	No water tanks, water runs safely at the club.
	Check that routine maintenance has not been missed and certification is up to date (e.g. Gas safety, Electrical Safety and Portable Appliance Testing, Fire Safety, Lifts and Heating – Ventilation and Air Conditioning).	All safety checks up to date and certificates available/on display at the club
	Check that your ground is ready and safe to play. Look at what work is required and how this can be done safely at a social distance.	Captains and coaches will be responsible for ground safety and suitability for play. Captain's checklist to be completed before, during and after play.
What are the hazards?	Vital first aid equipment is not available when needed. First aiders do not have adequate PPE to carry out first aid when required.	
Who might be harmed?	First aiders, facility users, staff, volunteers, and visitors	
Controls required	Action Taken by the Club	
First Aid		
	Check that your first aid kits are stocked and accessible during all activity.	First aid kits available on ground, captains have access, nominated first aider attends each activity. First aid kit and PPE provided in isolation room (away changing room).
	What steps have you taken to improve your first aiders' understanding of first aid provision under COVID-19?	All captains, coaches, and volunteers to attend an online meeting to be briefed on the Risk Assessment strategies. Shared advice with first Aiders via email as well as access through the STCC website.



www.silebytown.com



silebytowncc



silebytown



silebytown



Sileby Town Cricket Club Est. 1895

Mill Lane, Sileby, Loughborough, Leicestershire LE12 7NF



	If you have an AED then check that it is in working order, service is up to date and that it is available during all activity.	AED regularly checked and in working order. Volunteers trained to use and updated on how to use under Covid-19 conditions.
	What are the hazards?	Pitches or outfield are unsafe to play on
	Who might be harmed?	Players, officials, ground staff
	Controls required	Action Taken by the Club
Preparing your Grounds		
	Safety checks on machinery, sightscreens and covers.	Groundsman and volunteers to check on ground equipment at the end of each game. Groundman and volunteers to observe good hand hygiene when using machinery, cleaning machinery down before and after use.
	Check and repair of any damage to pitches and outfields.	Groundsman and volunteers to check on ground and repair damage at the end of each game and during the week. Groundman and volunteers to observe good hand hygiene when using grounds equipment, cleaning equipment down before and after use.
	Surfaces checked and watering regime adjusted based on lack of rainfall.	Groundsman and volunteers to check watering regime at the end of each game and during the week. Groundsman and volunteers to observe good hand hygiene when using grounds equipment, cleaning equipment down before and after use.
	What are the hazards?	Those involved in match play/training ignoring or not aware of expectations around hygiene and social distancing.
	Who might be harmed?	Players, Umpires, Scorers, Groundsmen, Volunteers & spectators
	Controls required	Action Taken by the Club
	Understanding who can touch which pieces of equipment and social distance measure during match play/training.	Share details with all players to understand who can touch what equipment: - Captains to take responsibility for players to observe social distancing - Stumps & Bails only to be touched by umpire.



Sileby Town Cricket Club Est. 1895

Mill Lane, Sileby, Loughborough, Leicestershire LE12 7NF



		<ul style="list-style-type: none">- Umpires not to touch ball, ball to be cleaned every 6 overs or 20 minutes by fielding captain- All players, umpires, and scorers to wash hands or sanitise every 6 overs or 20 minutes – This applies to matches and training.- Fielder/wicketkeeper to return ball directly to bowler- Scorers to score whole innings where possible to prevent shared use of keyboard, scorer to wipe keyboard if change of scorer is essential.- Anyone not directly involved with the match MUST NOT touch the ball when crossing the boundary rope. Players to leave the field to collect the ball.
--	--	---



www.silebytown.com



[silebytowncc](https://www.facebook.com/silebytowncc)



[silebytown](https://twitter.com/silebytown)

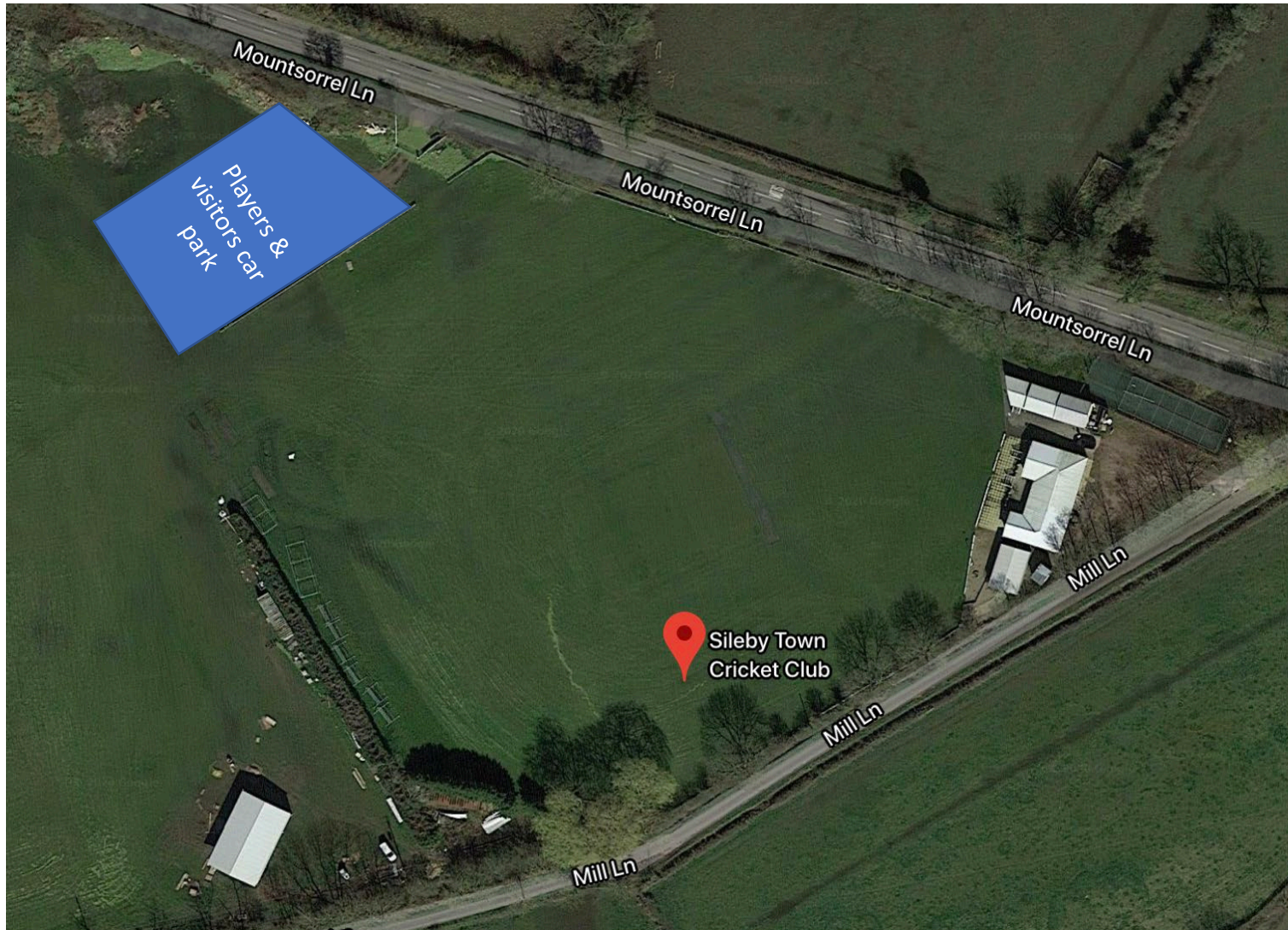


[silebytown](https://www.instagram.com/silebytown)



Sileby Town Cricket Club Est. 1895

Mill Lane, Sileby, Loughborough, Leicestershire LE12 7NF



[www](http://www.silebytown.com) www.silebytown.com



silebytowncc



silebytown

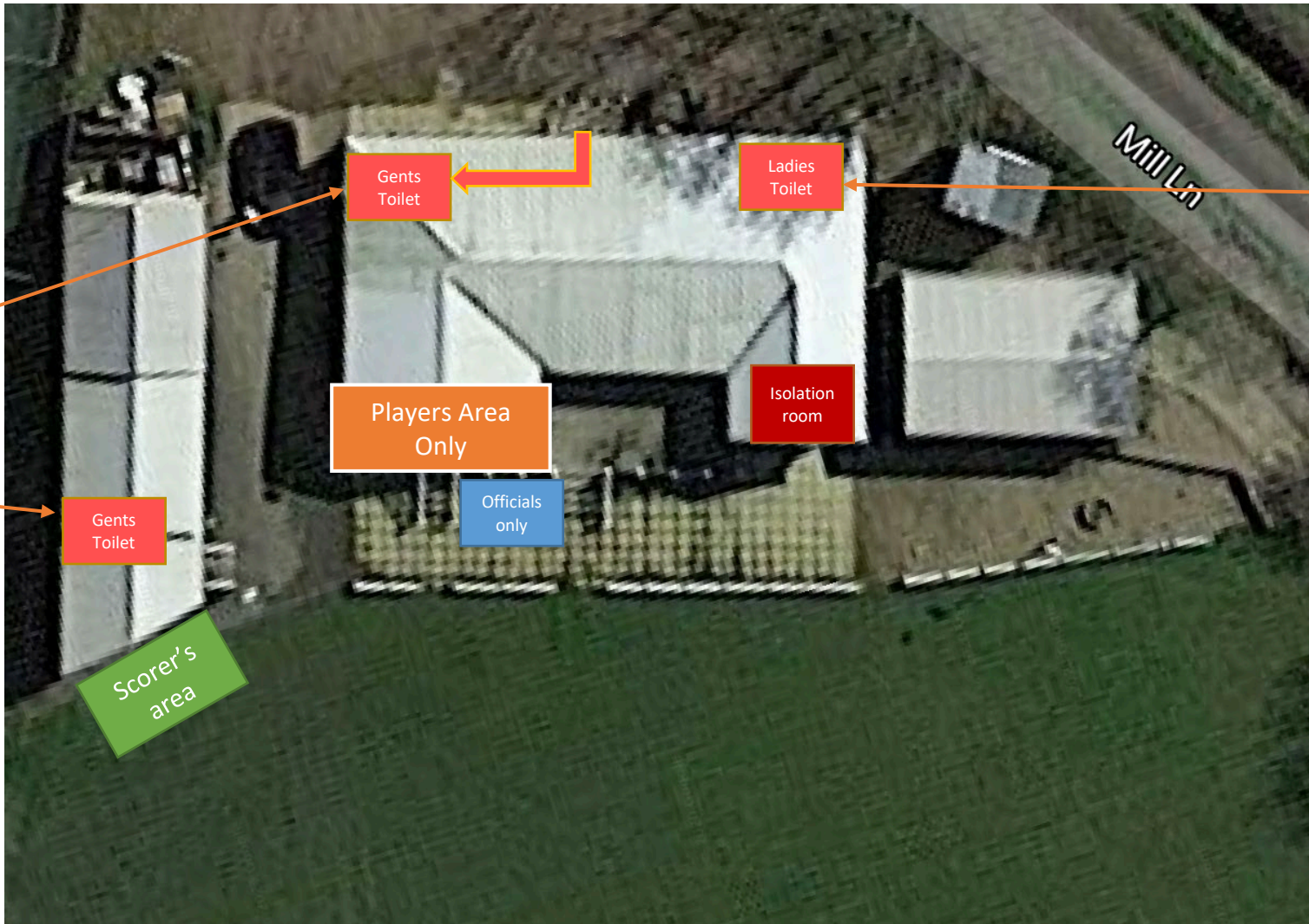


silebytown



Sileby Town Cricket Club Est. 1895

Mill Lane, Sileby, Loughborough, Leicestershire LE12 7NF



Visitors to toilets must leave the building as soon as possible. Toilet areas remain an area of higher risk.

Visitors to toilets must leave the building as soon as possible. Toilet areas remain an area of higher risk.



www.silebytown.com



[silebytowncc](https://www.facebook.com/silebytowncc)



[silebytown](https://twitter.com/silebytown)



[silebytown](https://www.instagram.com/silebytown)



Sileby Town Cricket Club Est. 1895

Mill Lane, Sileby, Loughborough, Leicestershire LE12 7NF

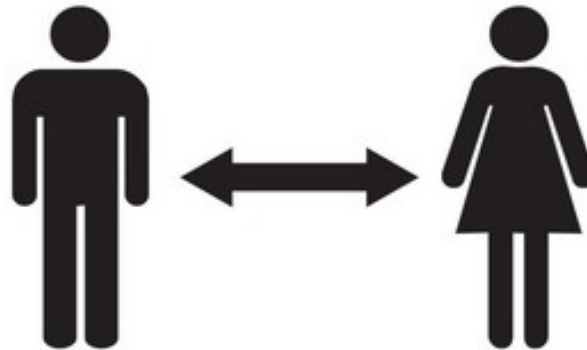




Sileby Town Cricket Club Est. 1895
Mill Lane, Sileby, Loughborough, Leicestershire LE12 7NF



ALL PLAYERS, OFFICIALS, PATRONS AND PARENTS, ARE EXPECTED TO COMPLY WITH ALL UK GOVERNMENT ADVICE AND MAINTAIN SOCIAL DISTANCING AT ALL TIMES



STAY SAFE AND ENJOY THE CRICKET!

www.silebytown.com



silebytowncc



silebytown



silebytown



Sileby Town Cricket Club Est. 1895
Mill Lane, Sileby, Loughborough, Leicestershire LE12 7NF



PLAYERS ONLY

NO

UNAUTHORISED

ACCESS



www.silebytown.com



[silebytowncc](https://www.facebook.com/silebytowncc)



[silebytown](https://twitter.com/silebytown)



[silebytown](https://www.instagram.com/silebytown)



Sileby Town Cricket Club Est. 1895
Mill Lane, Sileby, Loughborough, Leicestershire LE12 7NF



OFFICIALS ONLY

NO

UNAUTHORISED

ACCESS



www.silebytown.com



[silebytowncc](https://www.facebook.com/silebytowncc)



[silebytown](https://twitter.com/silebytown)



[silebytown](https://www.instagram.com/silebytown)



Sileby Town Cricket Club Est. 1895
Mill Lane, Sileby, Loughborough, Leicestershire LE12 7NF



**PLEASE STAY AT HOME
IF YOU
HAVE SYMPTOMS OF
COVID-19**





Sileby Town Cricket Club Est. 1895
Mill Lane, Sileby, Loughborough, Leicestershire LE12 7NF



HELP STOP THE SPREAD OF COVID-19

**ALL SPECTATORS USING
STCC'S FACILITIES MUST
PROVIDE THEIR NAME,
POST CODE AND CONTACT
NUMBER ON THE REGISTER
IN THE CLUBHOUSE**

This will be kept for 21 days and used exclusively for NHS Track &
Trace Purposes

Designated 'Officials Only' and
Player Only' areas are marked
on the ground.

**SPECTATOR TOILETS ARE
CLEARLY MARKED – GENTS
IN THE SCOREBOX AND
LADIES IN THE CLUBHOUSE**

**PLEASE REMAIN SOCIALLY
DISTANCED AT ALL TIMES**

A FULL SPECTATOR CODE OF CONDUCT IS
DISPLAYED IN THE CLUBHOUSE

STAY SAFE AND ENJOY THE CRICKET!



Code of Conduct for Spectators and Visitors

during STEP 3 of the ECB COVID19 Roadmap for return to cricket

Spectators are welcome to attend cricket activities at Sileby Town CC and must adhere to the following rules. Failure to do so will result in spectators being asked to leave

STCC Have assessed the safe capacity for those playing/ taking part in cricket activities. This does not include spectators. Spectators must therefore remain separate from players throughout the duration of cricket activities.

Spectators **must not** handle the ball to return to the field of play, only players are permitted to handle the ball.

All spectators must confirm that

- they and their household are symptom free
- they have adhered to UK Government guidance on use of public transport or car sharing when traveling to the ground

Spectators must provide their name, post code, and contact number for NHS Track and Trace purposes on the register in the clubhouse. This information will be used exclusively for this purpose and the club will destroy these details after 21 days.

Spectators must remain socially distanced from each other and the scorers in accordance with UK Government advice.

A designated area is provided exclusively for player scorers and officials and spectators must not enter these areas.

Toilet facilities for spectators are available, Gents and ladies clearly signposted.

Any spectators wishing to make use of the bar must comply with the regulations and guidance of Sileby Town Cricket Club. Once cricket activities have finished, players and officials may also access the bar and are no longer required to remain separate from spectators. All bar users must remain socially distanced.

Sileby Town Cricket Club is licensed premises.



DATE

TIME (From - To)

COVID-19 NHS TEST & TRACE INFORMATION

NO.	NAME	PHONE NUMBER	POST CODE	DATE
1				
2				
3				
4				
5				
6				
7				
8				
9				
10				
11				
12				
13				
14				
15				
16				
17				
18				
19				
20				



Changing Room Protocols

Government guidance along with ECB guidance has allowed us to open the changing room for home and away teams from May 17th. This document has been produced so players are clear on the protocols to ensure we can continue in safe manner.

Changing room use is limited at any one time to a **Maximum** of 6 players. A one in, one out system must operate if capacity is reached.

DO's	DONT's
Wear Face Covering at all times in Changing area	Do not enter the changing room if you start to show symptoms of Covid-19.
Use changing room to store bags, during the match only.	Do not use the changing rooms as a social space
Use changing rooms to change into cricket clothing and equipment	Do not use changing rooms to keep warm
Socially distance from the next person	Do not shelter during a rain delay
Ensure area is clear, clean, and tidy during and after use	Do not exceed the maximum number of people
Regularly sanitise hands using the hand sanitizer provided	Do not close doors
Ensure doors remain open to provide as much ventilation as possible in changing rooms	Do not use the Changing area for team talks, this should be done as a whole outside.
Clean shower after each use (1 in 1 out system for showers)	Do not leave kit and bags in changing rooms after matches, allowing the room to be cleaned
Spend minimal time in the dressing room before, during and after the game/training	
Ensure the highest standards of safeguarding in line with the ECB Safe Hands policy which the club has adopted. (all members have agreed to abide by the club's changing and showering policy)	



PLAN FOR ORGANISED CRICKET MATCHES IN ENGLAND FROM 17TH MAY ONWARDS



Undergo a personal symptom check at home prior to matches. Stay home and do not take part if you demonstrate any COVID-19 symptoms and are required to self isolate



Use own equipment throughout where possible and clean your bat when leaving field of play



No sweat or saliva is to be applied to the ball at any time. Hands and the ball should be cleaned at all breaks in play or every 6 overs



Players to remain socially distanced at all times (wicket keepers and slip fielders at 1m+). Batters should remain socially distanced from the umpire and run on opposite sides of the pitch



Use of the clubhouse, changing rooms and toilets should adhere to the latest UK Government advice



Keep a record of all those in attendance at each session, including contact details. This is to support NHS Test and Trace and is required by law.



Social distancing should be maintained during wicket celebrations and drinks breaks



Groups of up to 30 spectators are permitted at both public and private grounds

**THE ABOVE GUIDANCE IS IN RELATION TO OUTDOOR ORGANISED CRICKET MATCHES ONLY.
ALL OFF-FIELD ACTIVITIES SHOULD FOLLOW GOVERNMENT GUIDANCE ON SOCIAL DISTANCING**



COVID-19 PLAN FOR ORGANISED OUTDOOR CRICKET ACTIVITY IN ENGLAND FROM 17TH MAY

APPLICABLE TO PLAYERS, VOLUNTEERS, SPECTATORS, PARENTS, CLUBS, COACHES & OFFICIALS



This document provides measures that should be taken by players, volunteers, spectators, parents, clubs, coaches and officials before, during and after all organised cricket activity. For all activity, UK government social distancing guidance should be adhered to at all times.

This document refers to the current plan for England from May 17th onwards, and could change in response to the current COVID-19 government roadmap out of lockdown or other UK government guidance.

BEFORE ACTIVITY

- The safe number of participants (which enables social distancing to be maintained) should be determined by a venue risk assessment and communicated beforehand.
- Before attending any cricket activities or venues, all participants, officials, volunteers and spectators must self-assess for COVID-19 symptoms:
 - A high temperature.
 - A new, continuous cough.
 - A loss of, or change to, their sense of smell or taste.If you have one or more of these symptoms you should not attend any cricket activity and must follow NHS and PHE guidance on self-isolation.
- People with health conditions that put them at increased risk should consider the risks of participating in cricket activity.
- Follow Government guidance on shielding and protecting people who are clinically extremely vulnerable from COVID-19 (found [here](#)) if this applies to you.
- Personal hygiene measures should be carried out at home before and after use of the facility.
- Bring your own hand sanitiser where possible and practice strong hand hygiene at all times.
- Follow Government guidance on public transport or car sharing available [here](#)
- For advice on reducing the risk of infection when outside your home see [here](#)
- Club representatives should ensure that the facility is compliant with current Government legislation including legislation and guidance related to COVID-19. A risk assessment should have been completed and risk mitigation measures put in place and monitored
- Changing rooms can be used where it is safe to do so but subject to risk assessment and restrictions – see the Changing Rooms section of Part 2 of the full guidance. Clubs and venues should inform visitors that these are areas of increased risk, that they should shower and change at home where possible, and those that do need to use changing rooms should minimise time spent inside.
- Club representatives should make all participants aware of expected social distancing and hygiene behaviour during play and whilst on site.
- Club representatives should make all participants aware of the minor increase in transmission risk associated in partaking in even socially distanced group activity.
- Participants should arrive in kit and ready to warm-up.
- Teas and food can be provided where this can be done in compliance with the government guidance on hospitality and it is safe to do so (see the Teas section in Part 2 of the full guidance). Clubs and venues are not obliged to provide teas at this stage. Where teas are not provided, participants should bring their own food and drink or where available purchase food and drinks in line with Government guidance on hospitality. Water bottles should be clearly marked with the owner's name and must not be shared.
- Social interaction before playing cricket should take part in accordance with social distancing requirements and legal gathering size limits

DURING ACTIVITY

- Participants should enter the site and prepare their personal equipment whilst maintaining social distancing.
- People should maintain the rules on social contact before and after sporting activity, including any breaks in play, or whilst waiting to bat.
- Sharing of equipment must be avoided where possible, particularly that used around the head and face, such as helmets. Where equipment is shared, equipment must be cleaned before use by another person. More information is available [here](#).
- No sweat or saliva is to be applied to the ball at any time. Any infringement should result in immediate disinfection of the ball.
- All participants to wash their hands prior to the start of the activity.
- Hand sanitiser to be used at all breaks in activity (or every 6 overs during match play) and prior to consuming any food or drinks.
- There should be no shouting, singing or spitting.
- Spectators are permitted at both public and private venues. Spectators must observe social distancing and legal gathering size limits (groups of up to 30 outdoors). Outdoors, multiple groups of 30 (with no interaction among different groups) are permitted.

AFTER ACTIVITY

- Participants will exit whilst maintaining social distancing.
- Social interaction after playing cricket should take place in line with social distancing requirements and legal gathering size limits.
- One club representative/volunteer will be responsible for collecting and disinfecting shared equipment.
- Regular cleaning of equipment and the facility should take place, particularly between one group finishing, and the next group starting.