

SH & NLS NEWS



Stoke Hammond & Newton Leys South

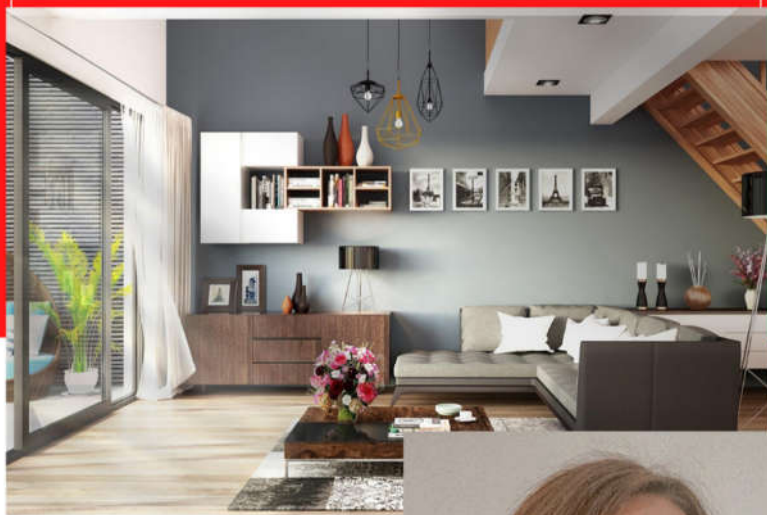
INSIDE THIS EDITION:
PARISH COUNCIL NEWS
NEWS FROM NEWTON LEYS SOUTH
G.O.M.
MAVIS'S QUIZ
CHURCH NEWS
BUCKS NEWS & MUCH MORE



December 2022/January 2023
www.stokehammondpc.com



*Proud to be your
Local estate agent*



**I offer value for money, a personal
& dedicated service bespoke to you.**

Call today:

 07753370420

**Or send me an
mail :**

 ceri.mollison@remax.uk



Hi, I'm Ceri!



Stoke Hammond resident and Falklands Veteran Greg Peck (left) with Colonel James Michael Holder of the US Air Force at St Luke's Church on Remembrance Sunday 13th November 2022

ST LUKE'S STOKE HAMMOND CHURCH SERVICE DATES TO JANUARY 2022

DECEMBER

- 4th Dec: 04.00pm Christingle Service – JW
- 11th Dec: 04.00pm Carol Service (with Benefice Choir) – JW
- 18th Dec: 09.30am Morning Worship - JH
- 24th Dec: 04.00pm Crib Service – Dave & Diane Webber.
(Suitable for all, but especially families)
- 24th Dec: 11.30pm Holy Communion (Midnight) – JW



JANUARY

- 1st Jan: 10.00am Benefice Holy Communion – SB
Note: To be held at St Mary the Virgin, Great Brickhill
- 8th Jan: 11.00am Family Service with Baptism - JW
- 15th Jan: 09.30am Café Church – DW
- 22nd Jan: 09.30am Holy Communion – JW
- 29th Jan: 10.00am Benefice Holy Communion - JW

Details of church services are posted on the Benefice Website:

www.brickhillchurches.org.uk

JW – Rev John Waller SB – Rev Steve Barnes

JH – Jeremy Hopkinson DW – Dave Webber

YOUR GREAT BRICKHILL UNITARY WARD COUNCILLORS

The Great Brickhill Ward includes the villages of: Drayton Parslow, Dunton, Great Brickhill, Hoggeston, Hogshaw, Mursley, Newton Longville, North Marston, Oving, Pitchcott, Quainton, Soulbury, Stewkley, Stoke Hammond & Swanbourne.



Phil Gomm

It's been a privilege living and being part of the spirited multicultural Aylesbury Vale community all my life. People have always been my focus and as a DJ Presenter and owner of an events company, listening and delivering accurately has been key. Family is extremely important and it's been my pleasure to farm and breed horses with them. Recently, as a County Councillor, Chairman of Thames Valley Crimestoppers and Buckingham Neighbourhood Action Group I've gained a passion for advocating for the best for people which I endeavour to continue.

Email: Philip.Gomm@buckinghamshire.gov.uk Mob: 07778 117647

Jilly Jordan

I am currently working as a Unitary Councillor in the Ivers. I have served on several committees, including planning (local and strategic) and finance, and I am Chairman of the local Community Board. We recently moved to live in the area. I am keen to use experience gained as a member of Buckinghamshire Council to the benefit of the local community. Clearly, we face many challenges, including those presented by major infrastructure projects. I look forward to getting to know members of the local communities and working together to maintain and improve the quality of life in our villages.

Email: Jordan@buckinghamshire.gov.uk Mob: 07740 308468



Iain Macpherson

Iain has spent the last 39 years in business, initially in international sales and marketing roles for multi-national companies travelling extensively, but more recently in medium sized businesses in the food sector in the Buckinghamshire and Oxfordshire area as Managing Director. He has always taken a keen interest in both national and local politics and has recently supported Greg Smith's campaign pre-election on the doorsteps. He's attended many fundraising events and local activities such as the anti-HS2 rallies. Iain is married to Angela, they have two mature children; Rosanna (31) and Angue (28)

Email: Iain.Macpherson@buckinghamshire.gov.uk Mob: Not Avail



PARISH COUNCIL NEWS

Well, here we are fast approaching the start of another New Year, 2023 to be precise, and what has your Parish Council got planned for you? Well in some respects and aside from the normal 'day to day' responsibilities that does very much depend on you. Yes, we will still be working very hard on the evolving Neighbourhood Plan (NHP) and as to how the S106 funds your PC have access to can best be utilised, but we do very much look to our Parishioners to tell us if we're doing things well or not, and whether there are other ideas and or projects in which you feel we should be engaged. Please feel free to contact any of your councillors or our clerk, whose email addresses follow this report. But what of 2022, well there is a chance by the time of reading this latest edition of the SH & NLS News, that you might have already enjoyed your first drink or meal in our newly refurbished and once again open village pub. 2022 will forever be defined by Her Majesty Queen Elizabeth II, her very sad passing but also the four days of magnificent celebrations, which was the Platinum Jubilee marking 70 years of her reign, and your Parish Council was just so proud along with the many other parish organisations, to help put on and be part of those very special four days in June. There have been quite a few changes to your Council in the last year, with two Councillors departing, which is in fact now three (more anon about this) and a change in our Parish Clerk. In early 2022 Cllr Damian Willingdale left the Council to be replaced by Cllr Craig Champion, who was co-opted onto the Council in April. Then in June Cllr Alan Humphreys stepped down from his role, as did our clerk Joanna Simonds, but Joanna in her as ever most professional manner, had already lined up 3 excellent candidates, all living within Stoke Hammond, and we were subsequently pleased to appoint Kelly Harris as our new clerk. Likewise, in September Cllr Dean McCann was Co-opted onto the Council, and for a short time we were back to a full PC comprising 7 Councillors, but sadly no, as just before going to print with this latest edition of the SH & NLS News we learnt that Councillor Stephen McNally is to resign as he has moved to a new home in Drayton Parslow. Cllr McNally was the first representation from Newton Leys South (NLS) on the PC, but NLS are still well served as both Cllr Champion and Cllr McCann also reside in NLS. Once approved by Buckinghamshire Council, we will be seeking applicants to be considered for co-option, so we once again have a full council.

Returning to the subject of NLS, which now represents 45% of our parishioners, we arranged for the November PC Meeting to be held in the rather impressive Pavilion Centre in Newton Leys. We were given a tour by the Bletchley Town Council clerk and discovered they also provide a home for a Buttons nursery, but were able to provide so much more in the way of facilities and space. It is a pertinent reminder of what we might be able to aspire to through our S106 project within Stoke Hammond. We are looking next year to hold more meetings in the Newton Leys Pavilion, and hopefully we can look forward to more NLS residents attending these future meetings.

Some good news now, in that after several months of discussions and negotiations between the SH Sports Club and the PC, a new agreement has been reached. The current license agreement had an amendment relating to ownership and maintenance of the mower equipment, originally owned by the Parish Council, which has not been the case

PC News Cont/d Page 2.

for many years. It was agreed to maintain the license agreement for maintaining the field but to scrap the other aspects of the agreement. In return the Parish Council agreed to make a one-off payment towards exceptional costs currently experienced by the sports club and to increase the annual allowance, index linked to the precept, in recognition of the contribution the Sports Club makes to our Parish community. This was deemed an amicable and fair agreement by both sides.

There are always small projects around the Parish that need addressing such as litter picking, the tidying up of verges through to the cleaning of signage. Not major things so possibly too small to use contractors but still something which will make our Parish just that little bit better. So, we have been investigating the use of the Community Payback Scheme, which for those of you who are not aware, is a government backed scheme where offenders work on projects to pay back the community for their minor offences. There is full supervision whilst the offenders are working on a project and we have consulted with our neighbours in Soulbury who have made use of this scheme for the past 7 years, and have advised that it has worked well for them. Nothing definite yet, but we are compiling a list of possible projects and will be meeting with representatives of the scheme.

We mentioned this in the last PC News, and the new housing development on the Fenny Road still continues to create issues, and we must thank Cllr David Venn who has taken on the 'mantle' to be the go between for you, the PC and the developers. There have been many issues, including mud being deposited on the road, through to contractor and delivery vehicles parking up and blocking the Fenny Road, all in direct contradiction to specific conditions contained within the approved planning application. Thanks to Cllr Venn's persistence in following these matters up the situation has vastly improved, and we continue to keep a close eye to ensure the site is complying with its planning and health and safety obligations.

So, what of the two PC meetings held since the last PC News report, well here follows a brief update on both, not forgetting that details of planning applications discussed at the meetings can be found in the separate 'Planning Updates' page, and copies of the full minutes from PC meetings are available to view and download on our website www.stokehammondpc.com

PC Meeting Tuesday 4th October Stoke Hammond Community Centre. Present 6 PC Councillors, PC Clerk, Unitary Ward Cllr Phil Gomm and 14 members of the public.

- In his update Cllr Gomm advised he is still pushing for the lights to the pedestrian crossing to be upgraded to LED's and that he was still prodding Bucks Highways for the approval of the three locations proposed for the installation of our new solar powered MVAS signs. Cllr Gomm also confirmed that as regards S106 funds Newton Leys have £1.1 million and Stoke Hammond currently have £150,000, although this should increase with the planned new developments.
- A lamppost on Phoebes Orchard is currently engulfed by a large tree and the PC are trying to establish ownership of the tree. The resident at number 20 has been spoken to and does not believe the tree belongs to him and we are still trying to

PC News Cont/d Page 3.

make contact with the residents from number 18. Cllr Gomm advised he could investigate the ownership on our behalf.

- The village benefits from a large lit Christmas Tree to the Village Green and it had previously been decided to try and do something similar in Newton Leys, and to that end the Clerk advised she had been in contact with Taylor Wimpey to find out which sites they could recommend for planting a tree and where access to power would be available. Our clerk and Taylor Wimpey are trying to agree on a suitable site, but it is unlikely to be resolved in time for this Christmas. Hopefully by next year, Newton Leys will have a well lit Xmas tree in a prominent location on the estate.
- Further updates from our clerk included, that permission had been granted by the council to crown lift 3 trees on The Green which are starting to block the main pathway and the work is scheduled to take place later this month. The bin by the shop is now being emptied twice weekly and seems to have improved the issue with it overflowing with rubbish. The broken lamppost on Olde Bell Close has now been replaced. Overhanging branches and vegetation on Newton Road have been cut back and the clearing of the brook on Bragenham Side has started.
- A member of the public expressed his frustration by how the look of the village is being let down by the overall poor state of the brook, and in particular the railings on Bragenham Side and the overhanging tree by The Dolphin. It was agreed the clerk would write to the Rivers Trust to see what could be done to address these concerns.

PC Meeting Tuesday 1st November Newton Leys Pavilion. Present 5 PC Councillors, PC Clerk, and 5 members of the public.

- Unitary Ward Cllr Phil Gomm was unable to attend but provided an email in his absence about working together with Fenny Stratford and Bletchley Town Council for Newton Leys.
- The matter of a £5K request for funding support from the Stoke Hammond Community Association (SHCA) for playground resurfacing works and the laying out of a car parking area to the Community Centre was debated. With both Cllrs Sharkey and Cllr Noble having already declared an interest, the remaining councillors debated the pros and cons, and eventually agreed to fund a reduced sum of £3000 if the project was to go ahead which was conditional on the SHCA being successful in their grant application with the Winslow & Villages Community Board. This decision recognised the benefits to the broad parish community of improved parking facilities, not just for community association activities.
- It was confirmed to the PC that the Methodist Church on Newton Road has been purchased by Plymouth Brethren Christian Church, with a member of the PBCC confirming during the meeting that it will be submitting a Planning Application seeking permission for a new entrance and parking for approximately 12 cars. The representative from the church advised there will be two gatherings per week, on a Sunday morning and Monday evening.

LUXURY NARROWBOAT HIRE

ON THE GRAND UNION CANAL



SEE LEIGHTON BUZZARD FROM A DIFFERENT PERSPECTIVE



THE EPIC BOATING COMPANY

NARROWBOAT 'KINGS LANDING'

Based in Stoke Hammond near Milton Keynes this brand new 60ft boat sleeps up to 7 people and is available to hire for holidays, weekends, mini-breaks and static staycations.

Full tuition is given on how to steer, navigate and operate locks before each hire.

Contact us for availability and prices.

CONTACTS US



Phone: 07974 141874

Email: admin@theepicboatingcompany.co.uk

Website: www.theepicboatingcompany.co.uk

DETAILS



2 Double Beds



Bunk Beds



Living Area



Kitchen



1 Shower Room



2 x WC's



PC News Cont/d Page 4.

- Our clerk advised that the 3 trees on the Green have now been crown lifted, with the brook along Leighton Road now cleared and the vegetation has been cut back. Bin collections have been increased for the new bin on Newton Road and for the bin next to the bus stop by the Dolphin pub.
- A parishioner once again raised his concerns with respect to speeding through the village. The Council accepted that progress on action, particularly with respect to the new MVAS equipment, has been much slower than they had hoped. Councillor Noble said he would personally take ownership of contact with the council to get the MVAS project back on track.

Our next PC Meeting is not until the New Year on Tuesday 3rd January, 7.30pm at the Community Centre, Bragenham Side, Stoke Hammond MK17 9DB. As ever, all members of the public are welcome to attend. For now, can we please wish all our parishioners a very Merry Xmas and a Happy New Year.



Should you wish to contact your Parish Council, please do so via our clerk:

Kelly Harris Tel: 07793 131810 Email: clerk.stokehammondpc@gmail.com

www.stokehammondpc.com

YOUR PARISH COUNCILLORS EMAIL ADDRESSES.

Cllr Malcom Newing (Chair) - malcomnewing@stokehammondpc.com

Cllr Craig Champion - craigchampion@stokehammondpc.com

Cllr Fran Sharkey - fransharkey@stokehammondpc.com

Cllr Greg Noble - gregnoble@stokehammondpc.com

Cllr David Venn - davidvenn@stokehammondpc.com

Cllr Dean McCann - deanmccann@stokehammondpc.com

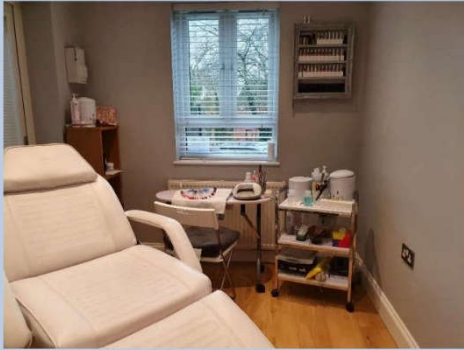
Donna Saggerson

07715 553146

Beauty & Waxing Specialist

Home based salon in the village with 16 yrs experience

- Waxing
 - Manicures
 - Pedicures
 - Gel nails
 - Eyelash / Eyebrow Tint*
- *24hr patch test required prior to treatment



BODY CONTROL
PILATES

Pilates for Every Body!

Pilates Specialist to help you move better and feel better!

If you're feeling a bit broken and in need of some quality time just for YOU, let Studio & Matwork Pilates help put you back together!

STOKE HAMMOND - MONDAY

- ✓ 9.15am Intermediate
- ✓ 10.30am Gentle/Osteoporosis
- ✓ 12noon Beginners
- ✓ 6.15pm Beginners
- ✓ 7.30pm Mixed

STUDIO - 1:1s & 2:1s

- ✓ Tues, Weds, Thurs daytimes

ZOOM - WEDNESDAY

- ✓ 9.30am Mixed
- ✓ 12noon Hatha Yoga
- ✓ 6.30pm Mixed
- ✓ 8pm Mixed

PLACE EIGHT WELLNESS, SWANBOURNE - FRIDAY

- ✓ 9.40am Mixed
- ✓ 11am Beginners/Improvers

louisa.pilates@gmail.com

www.louisaharrisPilates.co.uk

07941203589

Mutleys Dog Grooming



Located in Stoke Hammond

Call Tina on 07725 404714

- Pick up and drop off service can be arranged
- Nail clipping
- Specialised breed stripping
- All grooming requirements catered for
- Evening and weekends appointments available

B
THE BRICKHILL
FLOWER CO

The Brickhill Flower Co.



STUDIO BASED FLORST IN
GREAT BRICKHILL

WEDDINGS
EVENTS
FUNERALS
WORKSHOPS

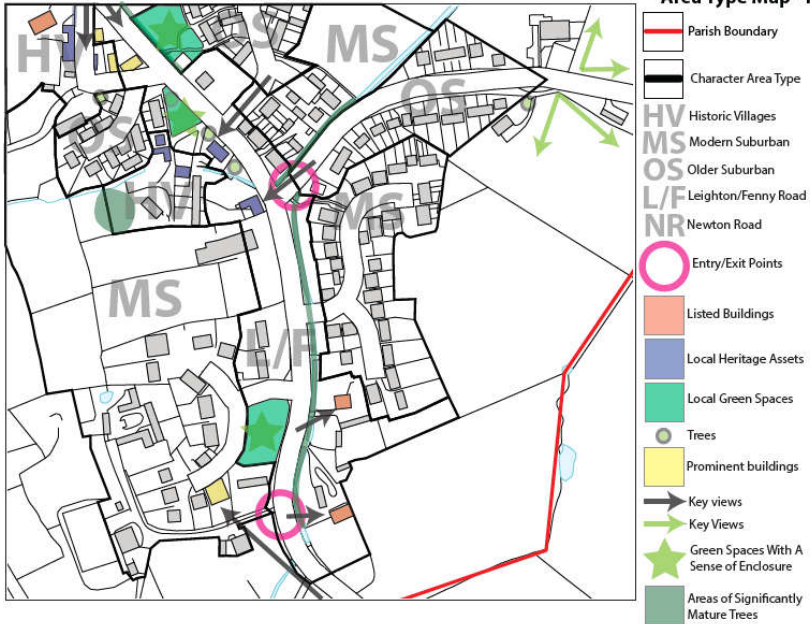


www.thebrickhillflowercompany.co.uk

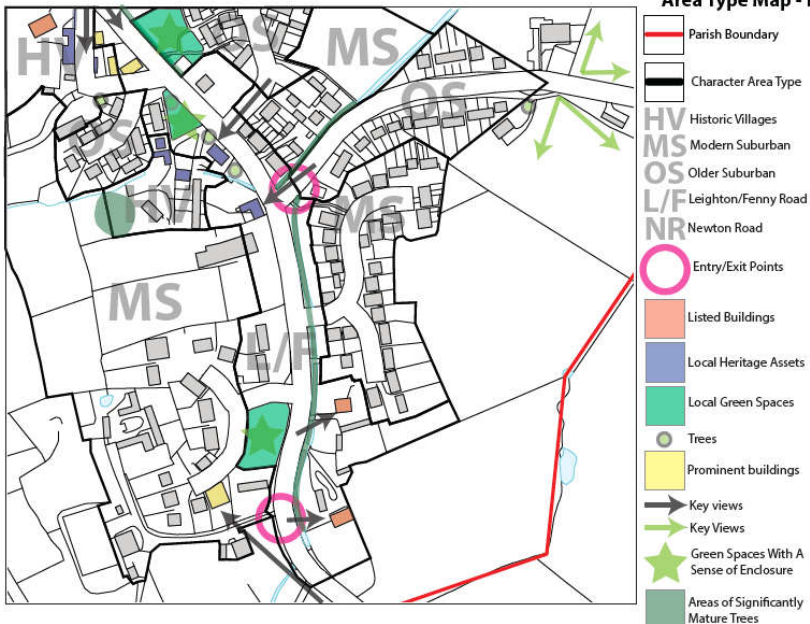
Neighbourhood Plan and S106 Project

The following maps are all proposed elements of the Neighbourhood Plan, which help define the character assessment of the village and active travel network around the parish.

Stoke Hammond Character Area Type Map - Inset 2

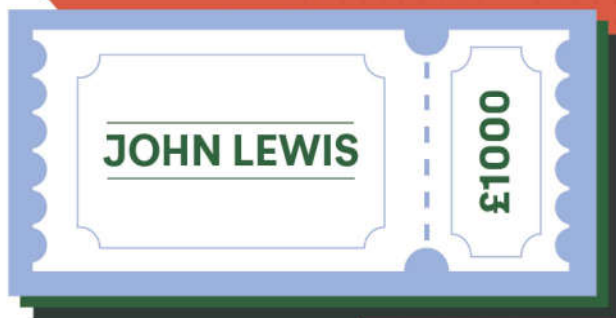


Stoke Hammond Character Area Type Map - Inset 2





WIN A £1000 JOHN LEWIS VOUCHER



- Tickets cost just £1 a week
- Win a £1,000 John Lewis Voucher!
- Please help give our fundraising a boost
- Chance to win up to £25,000

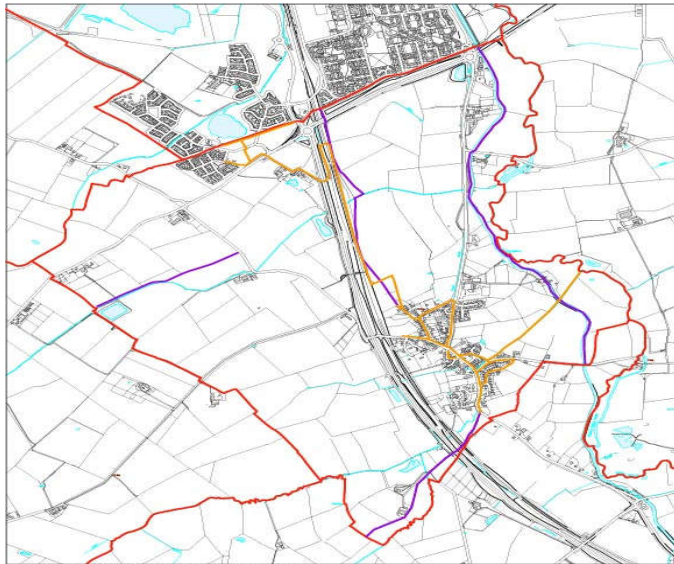
PLAY NOW:

Go to

www.buckinghamshirelottery.co.uk

Search for: **Stoke**





**Stoke Hammond
Neighbourhood Plan
Active Travel Network
November 2022**

-  Parish Boundary
-  Public Rights of Way
-  Other footpaths and pavements

We are currently reviewing these maps for inclusion in the plan and if you can see any errors or omissions, I'd be pleased to hear from you at malcolmnewing@stokehammondpc.com

The Call for Sites deadline has passed and the Steering group will be reviewing the applications we have received from site owners during December. During 2023 all parishioners will get an opportunity to comment on what we conclude.

S106 Project

Stoke Hammond s106 project

The initial phase of the Stoke Hammond village S106 project is all about trying to decide what are the actual needs of the Parish. Our starting point has been discussions with the main village groups. These are all now complete and they have submitted their returns for what ideally, they would like to see in the way of new facilities. The next step is to create a team to evaluate these responses and determine what's possible. The first meeting is hoped to take place in December.

I'm conscious however that this approach on its own doesn't reach out to all interested parties in the Parish. We have tried questionnaires in the past, which can provide a steer, but we now really need concrete ideas backed up by active involvement. So, if you think something is missing, or you have ideas for a new group activity and want to help make this a reality now is the time to make yourself heard. Please get in contact with either Craig Champion at craigchampion@stokehammondpc.com or myself.

DEEP CLEAN

Simply the BEST Carpet & Upholstery cleaning you can get

- The most modern, up-to-date equipment
 - Hot Water Extraction
 - Stain Removal Service
- Most of my work is recommendations or repeat business
- I carry my own water and remove all waste water
- Commercial, Industrial and residential Carpet & Upholstery Cleaning service

Please Call Darren Batchelor for a free quotation on:

**01525 851 811 or
Mobile 07790 034818**

Email : sales@deep-cleaners.co.uk
Website : deep-cleaners.co.uk

Approved Prochem Trained

SUPPORTING OUR LOCAL AREA

To spread some cheer this year, Fine Homes Property has teamed up with the Brickhill Bistro to bring you some delicious treats.

If you are thinking of selling your home, book a free market appraisal with us and you will receive a golden ticket which entitles you to a selected afternoon tea or one of Kathryn's delicious cakes.

As well as this, when we sell your home we will donate 5% of our commission to a project in your village or a charity of your choice.



FINEHOMESPROPERTY

Your personal realtor

Marcus Feinhols

**Marcus Feinhols MNAEA
Managing Director**



01525 261100



marcus@finehomesproperty.co.uk



www.finehomesproperty.co.uk

Newton Leys s106 project

We are deliberately running the Stoke Hammond project slightly ahead of the Newton Leys project in order to learn any lessons for Newton Leys, as the funds available are larger, and therefore we want to make sure we maximise the benefit from that spending. Preparation work is being done for the Newton Leys project, which is reviewing potential locations around the Newton Leys estate. It would be really helpful if any groups providing recreation activities to residents in the Newton Leys area make contact with either Craig Champion at craigchampion@stokehammondpc.com or myself.

I have one other request for help. Over both the Stoke Hammond village and Newton Leys s106 projects we need to produce a professional communication plan, if there is anyone out there with this expertise and who would like to help, I'd love to hear from you. *Malcolm Newing*

Stoke Hammond



a thankful village

HELP



HELP

THANKS TO A MAGNIFICENT BAND OF VOLUNTEERS, YOUR EDITION OF THE SH & NLS NEWS GETS POSTED THROUGH YOUR DOOR EVERY 2 MONTHS. BUT THERE ARE A COUPLE OF AREAS WHERE WE NEED SOME EXTRA ASSISTANCE. DO YOU THINK YOU COULD SPARE A LITTLE OF YOUR TIME TO DELIVER COPIES TO ONE OF THE FOLLOWING TWO GROUPS OF HOMES:

1/ LODGE LANE, OLDE BELL CLOSE & HARRUP CLOSE

2/ HILLERSDON CHASE, APPLEACRES & NEWTON ROAD

IF YOU CAN ASSIST, PLEASE CONTACT GREG NOBLE ON 01525 270744

OR EMAIL gregnable1980@aol.com



Ear Wax Removal

At Clearer Ears we specialise in earwax removal. Our Microsuction ear treatment provides a modern, quick and pain-free way to hear better again.

Our clinic is based in Linford Wood, Milton Keynes.

For those unable to attend clinic, we offer a home visit service.

We also provide bespoke custom made earplugs and earphones. These can be worn comfortably in a variety of different environments.

For more information or to book an appointment online visit:

www.clearerears.com

Or alternatively give us a call on:

0330 320 2225 or 07588 105060



www.facebook.com/clearerearsUK



Feeling Old?

Well, it's been a busy couple of months on the political front. A number of points arising have made me think I may be getting old – mainly because I have seen them all before. Interest rates doubling – hey wait until they get to 15% again. Unions bringing workers out on strike. It seems everyone is at it- Solicitors, postal workers, train drivers, public sector workers etc. etc.. I remember the pit strikes and working by candlelight in blacked out offices. And a friend reminded me that he went on strike (was “made” to) with British Telecom and he never recouped the money he lost during the action.

When I was a youth of 17 or 18, I recall a friend in my cycling club being invited to join the 40+ club. An age-related group. My, did we youngsters take the ****. What we'd give now to be the other side of 40. Around that time, or shortly afterwards, I recall Dave Allen (comedian) relating a symptom of getting old was that he had started puffing when he bent down to tie his shoelaces. I doubt if he was more than mid-forties.

And I note that I may no longer be keeping up with “technology”. (I remember explaining the video recorder to my mother. How could she not understand that?) I am advised that I can now travel in and out of London with an app on my mobile or just tapping a machine with my bank card. What's happened to tickets? I've found places that won't take cheques. I've found places that won't take cash!! (Cash has always been king). And, of course, there are card only aisles in the supermarkets to speed up your shopping “experience”.

A recent visit to a local hostelry revealed an increase in the price of their beer. By chance I had reviewed the price on-line as £5.00 per pint. Their website had not however been updated and we were charged £5.50 (I'm sorry but we've had to make an increase due to blah blah blah). Now 50p did not seem a great amount but in old money that was 10 shillings. In 1971 I remember saying I would not drink Guinness again if it went over 10 shillings a pint! (I did say the same again when it was approaching £1 per pint).

And last week I was working in an office with a lass of almost 30. In the course of conversation, it came out that she had never heard of Luncheon Vouchers. I couldn't believe it – I must be getting old!

Grumpy Old Man

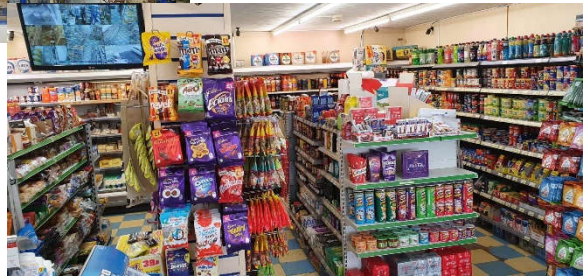
STOKE HAMMOND LOCAL STORE & POST OFFICE



Opening Hours:

Mon-Sat: 6.30am till 9.00pm

Sun: 8.00am till 9.00pm



Our Products:

"A FRIENDLY WELCOME GUARANTEED"

News & Magazines	Beers, Wines & Spirits	Pet Food
Confectionary & Snacks	Soft Drinks	Health & Beauty Products
Bread (inc. Turney's) & Cakes	Tobacco & Cigarettes	Frozen Food & Ice Creams
Dairy Products	Groceries	Greeting Cards
Medicines	Baby Food & other Products	Household Sundries
Sandwiches & Ready Meals	Fruit & Vegetables	Stationary Items

Other Services:

- * Pay-point/Top up services will be available. * Cash machine will be available.
- * Photocopying * Pies & Coffee will be introduced in the morning.



WELCOME TO THE NEWTON LEYS SOUTH SECTION



November Parish Council Meeting.

As part of steps to continue to improve engagement with the parishioners in Newton Leys the last Parish Council meeting was held in Newton Leys Pavilion. The Pavilion is an excellent community facility, and our councillors and Clerk were kindly given a tour of the building

prior to the meeting. This building is a very good example of a s106 project that has provided a truly useful facility for the community and councillors were very impressed by both the size and flexibility of the facilities and also in how efficiently and effectively it is managed by Fenny Stratford and Bletchley Parish Council.

The Parish Councillors from Newton Leys have already had a number of useful discussions with Fenny Stratford PC in the last few months to work together for Newton Leys. We hope to agree to have regular SH PC meetings at the Pavilion throughout next year.

We would like to reinforce the message that if you live on the Aylesbury Vale DC side of the Newton Leys estate you are encouraged to attend the Parish Council meetings. You will get a good insight into what the Parish Council is doing or you and more importantly you can raise any issues that the Parish Council may be able to help solving.

Landfill site visit.

Cllr McCann and Cllr Champion both joined a tour of the landfill site in November. This allowed them to understand the current operations of the site, the scale of materials required to complete the site together with how it is operating. Discussions included the potential for opening a public footpath around the perimeter of the site, and work underway to dig drainage on the site nearest the latest Taylor Wimpey phase. Both Councillors found it very interesting and are hoping to attend the next six-monthly Bletchley Landfill Local Liaison meeting.

S106

The Parish Council has access to a substantial s106 fund from the developers of Newton Leys South. Cllr Champion is the project manager for both the Stoke Hammond s106 project and the Newton Leys s106 project. Anyone who would like to be involved in the Newton Leys project please contact Craig Champion craigchampion@stokehammondpc.com Preparatory work has been underway for the last couple of months to get an understanding of the type of project that could be supported, and input will be required from people living on

STOKE HAMMOND SPORTS CLUB

ALSO
SHOWING FIFA
WORLD CUP
QATAR 2022

BRAGENHAM SIDE, STOKE HAMMOND, MILTON KEYNES MK17 9DB

ALSO
SHOWING FIFA
WORLD CUP
QATAR 2022

3rd December



BANDEOKE

THE BAND IS PLAYING

.....
SO COME ALONG AND HAVE A SING SONG

10th December

**XMAS PRIZE DRAW &
BINGO FISH & CHIPS**

1ST PRIZE - £100

2ND PRIZE - £50

3RD PRIZE - HAMPER

Lots of other prizes available

Tickets £10 - includes Fish and chips and 1st game

17th December

FAMILY NIGHT

FAMILY NIGHT

*Come and get into
THE FESTIVE CHEER
and bring the
KIDDIES ALONG TOO*

25th December

**XMAS DAY
12PM TILL 2PM**

Boxing Day Opening Times - TBA

31st December

New Year's Eve Party

£7.50 - Members or £10 Non Members
Buffet and Glass of fizz at midnight

Tickets

CALL VAL ON 270361
to book tickets for

New Year's Eve, Bingo fish and chips

ALSO XMAS RAFFLE TICKETS

AVAILABLE FROM THE SHOP OR THE SPORTS CLUB

OPEN

MONDAY - 18:30 TILL LATE

TUESDAY - 18:30 TILL LATE

WEDNESDAY - 18:30 TILL LATE

FRIDAY - 18:30 TILL LATE

SATURDAY - 17:00 TILL LATE

SUNDAY - 13:30 TILL LATE

**THURSDAYS PLEASE CHECK OUR FACEBOOK PAGE DUE
TO PRIVATE FUNCTIONS COMING UP**

on the estate and community groups and sports clubs.

Christmas Tree

The Parish Council is discussing with Taylor Wimpey potential sites for a permanent Christmas tree on the Newton Leys estate. Unfortunately, it looks like it will not be agreed in time for this Christmas, but the intention is that we would agree a location that is highly visible to Newton Leys residents and powered so it can be lit during the festive season.

Stoke Hammond Parish Council Community Fund

This year the Parish Council set aside a £3000 fund which community groups. Community groups in the Parish (which includes those benefitting Newton Leys South residents) can apply for grants of up to £350. There are still funds available to apply for this year, so I would encourage any groups in Newton Leys to check the rules on our website and get their applications in as soon as possible.

Firstpoint

Residents in the Bovis part of the estate have maintenance of the park on Dickens Lane and the grass shared areas on the edge of the estate. The SHPC would be interested in feedback from residents on the cost, quality of the service provided by Firstpoint and also their experiences dealing with this management company. Please contact Cllr Champion and Cllr McCann with your feedback.

Cllr Craig Champion - craigchampion@stokehammondpc.com

Cllr Dean McCann - deanmccann@stokehammondpc.com



Build with peace of mind from plans to dreams.

We are a professional and reliable building company with over 30 years of experience. We have a good reputation and much of our work comes from recommendations. We work closely with customers to ensure their expectations are met and all work is carried out to the highest standard. We undertake a range of high quality building work.



- EXTENSIONS | NEW BUILDS
- HOME IMPROVEMENTS
- LOFT + GARAGE CONVERSIONS
- PORCHES | GAZEBOS
- KITCHEN + BATHROOM INSTALLATIONS

Please contact us for a free no obligation quote.

PAUL 07739 544 772
OFFICE 01525 270 946

p.moore@pmconstructionukltd.com

WWW.PMCONSTRUCTIONUKLTD.COM



THE Lindens

The Lindens is a privately owned care home, set in the tranquil Buckinghamshire countryside, offering individual care for our long-term residents and those visiting us for respite care. We provide a real 'home from home' experience for all our residents and their visitors.

- ***24 Hour expert care delivered with compassion***
- ***Well-appointed double & single en-suite rooms with care call systems, televisions, DVD players and Internet facilities***
- ***Meals prepared in house using locally sourced ingredients, catering for individual dietary needs***
- ***Visitor's centre***
- ***Tea room available for our residents***

The Lindens Residential Care Home, Stoke Road,
Stoke Hammond, Buckinghamshire, MK17 9BN

Tel: 01908 371705 E-Mail: info@careatthelindens.co.uk

Web: www.careatthelindens.co.uk

THE Lindens

Season's Greetings to you all from us here at The Lindens. It has been an enjoyable Autumn for us, filled with activities including gentle exercise classes, our monthly Residents' Disco and musical entertainments to mention only a few items. In our Arts and Crafts, groups of residents made papier mâché pumpkins, which they painted. Residents also enjoyed carving pumpkins and painting autumn themed pictures.



Christmas Day Lunch **Starter**

Cauliflower & Chestnut soup,
with parmesan cheese
Or
Prawn Cocktail with avocado

Main Course

Traditional Roast Turkey
With lemon and thyme pork stuffing
Or
Honey Garlic Salmon

Pigs in Blankets
Herb roast potatoes
Creamy mashed potatoes
Roasted pear
Traditional Christmas roasted vegetables

Dessert

Traditional Christmas Pudding
with brandy sauce, cream or warm custard
Or
Dark Indulgent
chocolate and walnut brownies
Served with vanilla ice cream.
Gluten Free

As Christmas is now approaching, our planning has started as we aim make a fabulous celebration with delicious meals and treats for our residents over the festive period. We have a range of activities planned too, including Christmas Parties for our residents and their families with musical entertainment for the events.

If you are looking for a career in Care or to develop your skills further, give us a call we will be pleased to hear from you.

Wishing you all a Merry Christmas, with happy and healthy times ahead.

Michael Hannelly

Director

The Lindens

Stoke Road, Stoke Hammond, Buckinghamshire, MK17 9BN. Tel 01908 371705

Email: info@careatthelindens.co.uk Web: www.careatthelindens.co.uk



TIME FOR A CHUCKLE

Save water -



drink wine.

'On the whole, the years
have been kind to us all.



It was just the weekends
that did the damage.'

You read about
the dangers of
alcohol



so you had
better give up
reading.

When a
recipe says
'add wine',
never ask
'to what?'



Scouts



High Ash Group



We started this year's final half term off with a trip to the new Blue Light Hub in Milton Keynes. The cubs and scouts spent the evening touring the building and bombarding the local firefighters with questions before being let loose on the Drill Yard to experience what it is like to handle the fire hoses.

The scouts have also been busy planning an

evening of fund raising for the group at this year's Stoke Hammond Bonfire Night party, The Sports Club, who organise the event, very kindly allowed them to set-up a stall from which the scouts worked hard to sell soup, popcorn, lucky-dips and home-made cakes to all the attendees. A big thankyou to everyone who supported the scouts who turned in a rewarding profit in excess of £100 despite the inclement weather.

Meanwhile the cubs have invested another four new young people into their pack (we still have spaces for more girls and boys between the ages of 8 and 14). Jamie, our Young Leader, has successfully taken on the challenge this term of steering the cubs and scouts through a series of experiments and exercises to help them gain their scientist badges as part of his Gold DofE Volunteering requirements.

December will see the group using their creative talents to prepare our themed Christmas Trees for the church's festival. This will be quickly followed by our annual "Viking" Christmas Camp in the south of the

Buttons Pre-School

- * Abbeys, Bletchley
- * Brooklands Farm
- * Giffard Park
- * Great Linford

- * Newton Leys
- * Stoke Hammond
- * Stacey Bushes
- * Wolverton
- * Wavendon Gate

15 and 30 hours funded sessions.
Children from 18 months,
private sessions also available.

Sites across Milton Keynes and Bucks, flexible hours including breakfast club, afterschool club and Wrap around care. Forest school locations. Contact us for details of your nearest pre-school.

Tel: (01525) 270501 / 07973 158368

Email: enquiries@buttonspreschools.co.uk

www.buttonspreschools.co.uk



county, where we will be spending the weekend doing traditional scouting activities such as camp fires and backwards cooking, as well as more unusual ones such as supervised axe throwing!

If anyone wants to join us on Thursday nights in the New Year please contact me as we have spaces for more youth members, as well as adult volunteers.

Yours in scouting

DAVE POLLINGTON

Group Scout Leader (Baloo)

Dave.Pollington@mkscouts.org

High Ash Scout Group – MK District Scarf



Sunshine Blinds
DOMESTIC AND COMMERCIAL

Rollers - Vertical- Pleated - Venetian - Roman - Shutters -
Day & Night - Perfect Fit

FREE NO OBLIGATIONS QUOTATION CONTACT US TODAY ON
01908 502366 or EMAIL info@blindsmiltonkeynes.com

www.blindsmiltonkeynes.com



5 YEARS FREE GUARANTEE

Stoke Hammond Service Centre Bletchley

UNIT D, LYON ROAD, BLETCHLEY MK1 1EX

Tel: 01908 371110 & 01525 279009

Tyres ★ Exhausts ★ Servicing ★ MOTs ★ Diagnostics ★ Clutch ★ Engine

Established in 2006 and now one of the most accredited service centres around.



- ★ Free local collection and return.
- ★ Very competitive prices.
- ★ RAC inspected - 100%.
- ★ AA Select Garage.
- ★ MOT Testing Station.
- ★ Trading Standards, CAB, CVTS Approved.
- ★ All makes of car catered for.
- ★ Pleasant waiting area with hot drinks machine.





WALK OUR WOOFERS

Walk Our Woofers is a local dog walking service, providing safe, fun and stimulating walkies for your furry best friend, either from your home or in local countryside. First-aid trained, insured and DBS-checked.

Call 07977 155164

or email me at:

steve@walkourwoofers.co.uk



07977 155164

www.walkourwoofers.co.uk

LAPTOP & COMPUTER

Server, Printer, Apple, Setup, Repairs, Data recovery, Internet, Wireless, Network, Virus infection, Home/Office computer problems. Services from £40.

Your local IT support, 7 days services, we visit you

No Fix - No Fee

Qualified, Experienced

PClaprepairs@gmail.com

01525 306316 – 07925 338435

Local Carpenter

- With many years of experience
- Good quality work
- Including doors, kitchens, fitted wardrobes and shelving
- Large or small jobs

You can contact James on these numbers:

Phone : 07970 750599

Home : 01525 270400



JBContractors

JB Thomas - Proprietor

NEED A HAIRCUT?

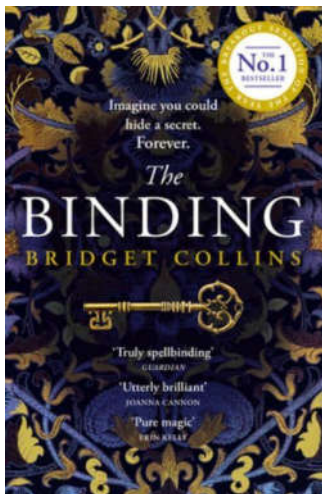


GIVE LES A CALL

07723 300576

**I'm a mobile
Hairdresser working
in and around
Stoke Hammond**

STOKE HAMMOND BOOK CLUB



The Binding - by Bridget Collins

Another strange topic !

Set in medieval times the main character is Emmett Farmer a farm labourer whose life is changed when he is sent to be an apprentice to a 'Bookbinder'. - an elderly lady called Seredith. Although Emmett learns the skills of bookbinding this is not the normal establishment but almost like a confessional where anxious people come to admit to horrors and traumatic memories in their past and having expressed them the experiences are turned by the Binder into a book and supposedly erased from the client's memory. The books, beautifully bound, are then locked away and one suspects that the 'bindings' could easily be used for evil purposes.

Although all agreed the book was rather strange it received a mixed reception. Most thought it was far too long and having quite liked it to start with became impatient later. Others enjoyed the strangeness of it. It was thought to be rather muddled as so much was happening in different directions. It could be described in part as an unusual love story starting from initial dislike to full infatuation but this is only one element of a rather complicated story. The group thought there were interesting descriptions particularly of the countryside but complained that the women characters from Seredith onwards were not given the importance they deserved.

Conclusion: Definitely different but unable to fully recommend it.

OPENING TIMES

Monday 9:30-2:30

Tuesday 9:00-4:00

Wednesday 9:00-4:00

Thursday 9:00-8:00

Friday – Closed

Saturday 9:00-4:00



MADISONS

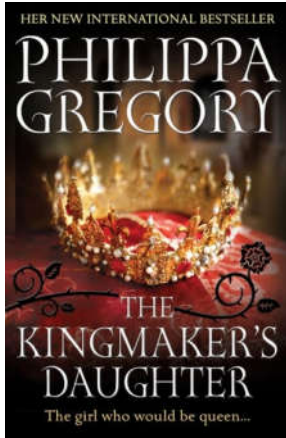
HAIR & BEAUTY

01908 632 050

- **Ladies**
- **Men's cuts**
- **Colours**
- **Children**

**17 GREENWAY, NEWTON LONGVILLE,
MILTON KEYNES, MK17 0AP**

BOOK TWO



The Kingmaker's Daughter -n by Philippa Gregory

At last - great enthusiasm when we met to discuss the book. Everyone enjoyed it. Of course Philippa Gregory is a well-known and respected writer particularly of historical novels and this one concerned Anne Neville daughter of Richard Neville, Earl of Warwick who is known as the kingmaker due to his great influence, particularly in royal circles in the fifteenth century. However, before he can arrange for one of his two daughters to marry King Edward the king marries Elizabeth Woodville in secret and the Kingmaker needs all his skill and scheming to find another way to fulfil his ambitions for the Neville family.

We all found the book an interesting mixture of fact and fiction and enjoyed the descriptions of life at Court, clothes and jewellery even letting us know about the battles without going into too much detail - which one member of the group remarked made it obvious that it was written by a woman! We appreciated the historical research that had obviously been carried out (and even learnt a few things). So, the conclusion was that this month's read was definitely a success.

Conclusion: Certainly, another good read from Philippa Gregory.

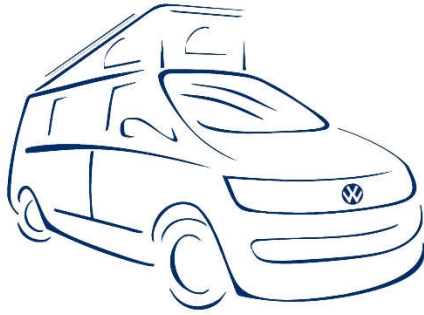
Next month's first book - **Birdcage Walk** - by Helen Dunmore

**COFFEE MORNINGS
AT THE
SPORTS CLUB**

Every Wednesday morning from 10am.

**All welcome, pop along for a mingle and a chat
with friends and neighbours whilst enjoying a cup
of tea or coffee and a biscuit on the side**

The Sports Club, Bragenham Side. MK17 9DB



MD Campers

Campervan Hire

A DIFFERENT ADVENTURE EVERY TIME

VW Campervan hire straight from the garage you can trust ➡

Hire available from £90.00 per night

Hire from as little as 2 days, depending on availability.

Fully equipped with all you need for your glamping experience.

Heating, Gas Hob, Fridge, Sink, 5-seater, 4 birth.



Tel: 07877 835236

Email: hello@mdcampers.co.uk

Facebook: www.facebook.com/MDCampers

Instagram: [mdcampers_campervanhire](https://www.instagram.com/mdcampers_campervanhire)

Website: www.mdcampers.co.uk



MD Autocare

Vehicle Maintenance

Stoke Hammond's local Independent Garage.

Keeping the cars of Stoke Hammond & surrounding areas on the road since 2001

Available for:

Servicing & Repairs

Mots

Diagnostics

Air Conditioning

All Makes & Models

Fitting is free for all Bulbs, Blades & Batteries purchased from us
(Standard fitment only)

You can find us up the single-track road, to the left of the Village Shop.

Mark & Jo

MD Autocare, The Workshop, Olde Bell Close
Stoke Hammond, MK17 9BZ

Tel: 01525 270278

Email: mdautocare@gmail.com

Facebook: www.facebook.com/MDAutocare

High Ash C of E School Parish Council Newsletter

Grow Together Shine Forever

'Let your light shine' Matthew 5:16

December 2022 - Parish News

To support the launch of Anti-Bullying Week on Monday 14th November, the theme this year is to 'Reach Out'. We discussed bullying and what it means and how to reach out to prevent it. We started the week with celebrating differences and diversity so we invited the children and staff to come into school in odd socks!

Children in Need - Friday 18th November - we invited the children to wear something spotty and bring in a **cash donation** to support this charity. **Children in Need are the leading independent funder for children and young people in the UK.** They believe that every child and young person deserves the opportunity to thrive and be the best they can be. Through their grant making and wider work, they aim to create lasting, positive change across the UK for the children and young people who need it the most. All the children and staff looked SPOTastic!

NSPCC's *Speak out. Stay safe.* online programme - the children participated in this online programme which consisted of an online assembly and supporting classroom based activities. *Speak out. Stay safe.* is a safeguarding programme available to all primary schools in the UK and Channel Islands. It aims to help children understand abuse in all its forms and to recognise the signs of abuse in a child friendly way. Children are taught to speak out if they are worried, either to a trusted adult or Childline. The messages were delivered in a fun and interactive way with the help of their mascot Buddy as well as special guest appearances from Ant and Dec.

Christmas Events and Celebrations!

We are busy preparing for our festive celebrations.

Nativity Productions - Our Foundation and a Year One and Two Nativities will take place on **Tuesday 13th and Wednesday 14th December at 2:00pm and 5:30pm.** Parents will be invited.

Christmas Tree Walk - KS2 (Years Three to Six) will walk to the woods on **Friday 2nd December at 9:00am** for our annual Christmas Tree Service. Parents will be invited to walk with us to the woods from school. Fdn and KS1 (Years Reception to two) - will have an outdoor service at school at **2:00pm on the same day**, Friday 2nd December and parents will be invited to this. They will sing carols, say prayers and have a Christmas biscuit!

December 2022 - High Ash Parish News Continued:

Christingle Service - we are holding a KS1 Christingle Service on **Thursday 15th December** at 1:45pm at **St Mary's Church**. Our KS2 children will have a **Christmas Carol Service** on **Monday 19th December** at 1:45pm at **St Mary's Church**. Parents will be invited to join us at these events.

Good Companions Christmas concert - this will take place on **Thursday 8th December** at 1:30pm in the school hall. All Good Companions are invited to join us at this festive event. They will be entertained by our talented children and refreshments and mince pies will be available. We do hope some of you will be able to join us. **If anyone should like to reserve seats, please contact the school office on 01525 261620.**

Sarah J Boyce

Sarah Boyce
Headteacher
headteacher@highash.bucks.sch.uk

FULLY INSURED
PROFESSIONAL
SERVICE

PRESSURE WASHING • SOFT WASHING

WHITE WATER
DRIVEWAY & PATIO CLEANING

TARMAC
CONCRETE
BLOCK PAVING
RESIN BOUND
CRAZY PAVING
SANDSTONE
FLAGSTONE
LIMESTONE
DECKING
BRICK

CALL
TODAY
07738 434 787
FOR A FREE
QUOTE

INFO@WHITE-WATER.CO.UK
www.white-water.co.uk

Instagram Facebook
Trustpilot
★★★★★

Joyful Tots

- Joyful Tots is an inclusive session for parents, carers, or anyone looking after a baby or preschool child. Friendly mums and carers are there to chat with and share problems, advice and information

- **We have extended our regular session time to start earlier at 9am - straight after school drop off but still finishing at 11.30am for those who'd prefer to join us a bit later on Friday mornings during term times in the side room at Stoke Hammond Community Centre**



- Come on down and meet a friendly face! Take a break from your own four walls and give your child a chance to start socialising



from an early age (plus save on your own central heating!). There's no charge for your first taster session and only £2 per mum & tot (plus an extra 50p for each extra child after that). (Refreshments included)

There'll be age appropriate toys and activities and refreshments are provided for adults and children

- If you'd like more information or you think you would like to come along but can't make the date, please call Linda 07971 134497 or Diane 01525 270409 or message us on Facebook (Joyful Tots)

MAVIS'S QUIZ

In case you missed them, here are the answers to the last quiz where you had to identify the country from its silhouette.

1b: Vietnam 2a: Kenya 3c: Japan 4a: Italy

5c: Indonesia 6c: Brazil 7b: Australia

8a: Papua New Guinea 9a: Mexico 10c: Madagascar



This time and as we're smack in the middle of the World Cup 2022 in Qatar, can you identify from the pictures the famous past and present World Cup Footballers and the country they represented or currently represent. To assist the first letters of the name and country have been provided.



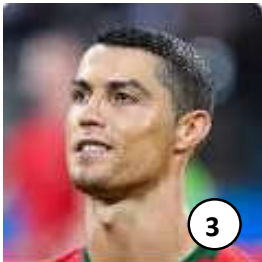
1/ P _ _ _

B _ _ _ _



2/ F _ _ _ B _ _ _ _ _

G _ _ _ _ _



3/ C _ _ _ _ _ R _ _ _ _ _

P _ _ _ _ _



4/ D _ _ _ _ M _ _ _ _ _

A _ _ _ _ _



5/ H _ _ _ K _ _ _

E _ _ _ _ _



6/ J _ _ _ _ K _ _ _ _ _

G _ _ _ _ _

Greenstripe

The lawncare specialists



BOOK YOUR
FIRST
TREATMENT
WITH
50%
OFF



- ✓ LAWN TREATMENTS
- ✓ AERATION
- ✓ SCARIFICATION
- ✓ TOTAL RENOVATION
- ✓ TURFING



- ✓ FRIENDLY SERVICE
- ✓ EXPERT KNOWLEDGE
- ✓ FREE QUOTATIONS
- ✓ LOCAL SPECIALISTS
- ✓ FAMILY RUN



PUT YOUR
LAWN
IN THE PICTURE
#LawnsByGreenstripe

@greenstripemkLtd



EXPERIENCE THE
GREENSTRIPE DIFFERENCE



7/ B _ _ _ _ C _ _ _ _ _

E _ _ _ _ _

8/ L _ _ _ _ M _ _ _ _

A _ _ _ _ _



9/ K _ _ _ _ D _ _ _ _ _

S _ _ _ _ _

10/ G _ _ _ _ B _ _ _ _

W _ _ _ _ _



Best of luck, but to save you having to wait till the next edition, answers can be found on the 'Planning Section' Page

Before/After School Nanny

Available from September 2022

NVQ 3 & Recent DBS

Excellent References

Also available for
babysitting
weekends, holidays,
evenings and
overnight.



Please contact:

Colleen

colparrotte@hotmail.co.uk

POP-UP PIZZERIA

STOKE HAMMOND COMMUNITY CENTRE

FRIDAY 23RD DECEMBER
5.30-8.30PM

FRIDAY 27TH JANUARY
5.30-8.30PM

(monthly every 4th Friday if there
is enough demand)

See website for menu & ordering
cafejardinwingrave.co.uk

CATERING

Small party & event catering, wakes
dinner parties, afternoon tea etc

Contact Emma on 07787 838167 or
cafedujardin@hotmail.com
to discuss your requirements

 [@cafedujardinwingrave](https://www.facebook.com/cafedujardinwingrave)

PICTURE FRAMING
by
COUNTRY FRAME



EST 1984

The Complete Picture Framing Service

Expert advice and framing on:
Prints, Posters Water-Colours, Oil Paintings, 3D objects and all types of needlework

A huge range of mouldings to suit everything
and over 100 different colours of quality mounting boards

Contact: **Paul Body**

10 Fishweir, off Chapel Square, Stewkley, Leighton Buzzard, LU7 0HB

www.countryframe.co.uk

T: 01525 • 240163 M: 07771 • 508805



**J & J LUXFORD LTD
BUILDERS**

For all your building needs
Project managed
From design to completion

**EXTENSIONS / NEW
BUILDS**

Contact us
Office: 01525 240637
07885455203 –
07860726741

12 Ivy Lane
Stewkley
Leighton Buzzard
Beds LU7 0EN

Tel: 01525 240637 & 01525 240746
Mob: 07860 726741 & 07885 455203
Fax: 01525 240827

www.luxfordbuilders.co.uk

St Luke's Church News

Review: **St Luke's Gift Day** went well and for a change, the soup proved more popular than the cakes! Thank you to all who donated towards the restoration and repair fund. We have raised over £800 which will go towards the new path.

Beetle Drive and Bingo: This was also a popular event, although tickets sold slowly to start with. Everyone who came said they enjoyed it and many were surprised at the size of the "light" supper.

The **Remembrance service** took place on 13th November and the service was well supported. The laying of the wreaths took place during the service and this year we were delighted that a new villager (and ex-member of the US services) was also able to lay a wreath.

Community breakfasts also went well over the last couple of months (see photo). Thank you to all our helpers – we couldn't do it without you.



Church Activities:

Food Bank: We're very grateful to those who continue donate to the food bank, but please note that we don't accept out of date food, opened jars or anything requiring refrigeration or freezing, **nor do we accept any alcohol or any aerosol products** owing to the possibility of abuse. This month we will be adding **Christmas themed items** to the foodbank (including pickles, cranberry sauce and savoury biscuits(!) as well as the usual fare) The food bank is open in the church porch



for villagers to use anonymously.

Swap shop: Just a reminder that we also have a Swap shop in the church porch. It's a source of children's toys, books and games you can borrow or exchange. You can either bring and swap a toy or just donate one or even just help yourself if you don't have anything to swap. Please ensure all required pieces are there so that games are still playable. Thanks!



Prayers: Our prayer group usually meets twice a month and prays for personal, local, national or global matters. Prayer request cards are available at Community breakfast or speak to a churchwarden if you would like to join us!

Community and Social: (Subject to Government guidelines)

Community Breakfasts: There's no breakfast in December, but we'll be holding a Community Breakfast on **14th January** with orders taken from **8.30 – 10.30am**. Contact us (details below) if you'd like to go on our email list for reminders of social events or our email list for services and social events.





A Very Apt Message For The Approaching Christmas Season

A Warning Message From a Thief.

ATTENTION!! I AM A THIEF. I AM ON YOUR FRIENDS LIST. I AM COMING TO TAKE ALL YOUR CHRISTMAS SHOPPING.

I KNOW EXACTLY WHERE IT IS. I KNOW YOU HAVE BEEN SHOPPING FOR WEEKS AND ARE NOW FINISHED.

I ALSO KNOW YOU AND YOUR FAMILY ARE OUT FOR THE DAY.....

I KNOW BECAUSE IN THE LAST FEW WEEKS I HAVE BEEN WATCHING YOUR STATUS UPDATES AND YOU HAVE TOLD ME EVERYTHING I NEED TO KNOW.

THANKS FOR MAKING IT SO EASY FOR ME! MERRY CHRISTMAS.

The above message was posted on Facebook and even though the lady was informing her friends she was also giving information away to a thief!

So, I am sharing this message to warn everyone on the various social media sites not to give personal information away, or if you are going to be away over the Christmas season or at any time you can never be sure who is seeing your personal information.

I can hear a number of you saying, but my group is a private group, maybe but I suggest you check your settings. Facebook has changed some of their rules and regulations.

Cold Caller: We seem to be having a number of cold callers circulating within our Areas. This time a man called on various residents stating he was from Great Ormond Street Hospital collecting for the charity and that most of the neighbours had joined in the charity. The cold callers were both male and female and asking residents for their personal information ex Bank details etc. The man became quite pushy when he did not get the reply he was hoping for. Be aware this is another Scam.

Unfortunately, with the run up to Christmas we are likely to see an increase of Cold Callers on our doorsteps, or phone calls. Please just close the door and do not engage in conversation, or if by phone just end the call.

Take Care and be careful.

Val McPherson BEM (NWN, Multi Scheme Administrator, Thames Valley)

Carol Singing on the Green: Back by popular demand, we will be singing Christmas songs and carols to the melodious sounds of the keyboard courtesy of our resident organist John Wearmouth. Wrap up for the weather, bring your singing voices and come and join us for minced pies and mulled wine! (Alternatives are available for teetotalers and children). Carol singing will take place on **Wednesday 21st Dec at 6pm.**



Services: See full listing elsewhere in the newsletter

Sunday 4th Dec at 4pm: **Christingle service** (aimed at children, but all welcome)*

Sunday 11th Dec at 4pm: **Carol Service** (including the benefice choir)

Saturday 24th Dec at 4pm: **Crib service** (designed for children but open to all)**

Saturday 24th Dec at 11.30pm: **Midnight Holy Communion** (be first to celebrate Christmas Day at midnight!)

Sunday 8th Jan at 11am: **Epiphany Family Service with Baptism**

Sunday 15th Jan from 9.30am: **Café church**(informal short service after breakfast!)



* For those who don't know, a Christingle is a candle in an orange surrounded by 4 cocktail sticks with dried fruit and sweets on! They are given out freely at the service so come along to find out what it means!

** Bring a cuddly animal (to lend) to share the crib with baby Jesus at this friendly fun service!

Fundraising:

Our last Fundraising events of the year are:

Saturday 26th November: Christmas Fayre which will be held at the Community Centre between **2 & 4pm**. There will be arrange of private stalls, as well as a plant stall, Christian books and advent cards/ candles, cake stall, Christmas tombola, unwanted gifts and preowned toys, raffle, refreshments with mulled wine for the adults and Santa in his grotto for the children! If it's anything like previous events, we'll all be having a merry old time!



Saturday 10th & Sunday 11th December: Christmas tree festival. Please note the different times on each day: Saturday: 10.45am – 2pm; Sunday: 11am – 2.30pm. Refreshments will be available on both days, with breakfast baps available on Saturday morning. All the Christmas trees prepared by village groups will be on display in the Church.



Please note that the church **Christmas hamper raffle** will be drawn immediately after the carol service on 11th December. Tickets will be available at church events beforehand.





LJM Bridal

Brides on a budget

We are for brides on a budget. We do everything from wedding dresses to artificial bouquets and centre pieces plus so much more – please just ask. Call us on 07584 190012

See us & message us on



**JULIE
TEBUTT
PAINTINGS**

**I AM AN ARTIST LIVING IN STOKE HAMMOND.
WOULD YOU LIKE TO LEARN TO PAINT IN
WATERCOLOUR, PASTEL OR ACRYLICS?
I AM CONSIDERING CLASSES TO BE HELD
IN THE SPORTS CENTRE, TIMES TO BE
ARRANGED AM/PM?
SHOULD YOU BE INTERESTED
CALL ME ON : 01525 279547
MOBILE : 07565 899104
E.MAIL : tebutt.j@sky.com**



TEBUTT PAINTINGS



CARPET KLEAN

We're a professional carpet and upholstery cleaning service covering Milton Keynes and the surrounding areas.

We only use top of the range cleaning equipment so you can be sure the service will be fast and professional.

BOOK YOUR CLEAN TODAY
01908 970 960

or email: info@CarpetKlean.co.uk

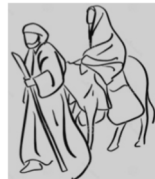
Follow us on Facebook @CarpetKlean



Introducing your local
carpet, sofa, chair & rug
cleaning specialist...

Rodney Nowik

Bible verse of the month: Luke 2 v 1-5: *In those days Caesar Augustus issued a decree that a census should be taken of the entire Roman world. ² (This was the first census that took place while^[a] Quirinius was governor of Syria.) ³ And everyone went to their own town to register. ⁴ So Joseph also went up from the town of Nazareth in Galilee to Judea, to Bethlehem the town of David, because he belonged to the house and line of David. ⁵ He went there to register with Mary, who was pledged to be married to him and was expecting a child.*



What does it mean? These verses take place before Jesus' birth. Poor pregnant Mary had to travel all the way on a donkey. According to Googlemaps, it's 94 miles and takes 31 hours on foot (but that's at 4mph on level ground, so probably double that). It's estimated it took them a week, but even worse they arrived at Bethlehem to find every hostel fully booked...and Mary going into labour! But that's how God planned it: the greatest king came from the humblest of beginnings – born in a dirty stable. As we look forward to celebrating, let's remember it's the birth of our saviour, not the glitter of decorations and gifts that's at the heart of the real Christmas message!

Funeral information: You may wish to know that the Rector can conduct a funeral service at a local crematorium if your relative prefers cremation. New rules mean that crematoria are not offering a religious service by default: it has to be specifically requested by the family. Also, any resident of the village is entitled to have their ashes buried in the churchyard (for a small fee) if they wish. Please also note that the rules have recently changed regarding memorials in churchyards. If you'd like more details, please speak to the Rector or Churchwarden Harry Davies.



Church Benefice Website: www.brickhillchurches.org.uk.

St Luke's offers baptisms, weddings and funerals. Please contact the Rector if you'd like to discuss any of these. The Rector's contact details are on the website. His phone goes straight to an answerphone but he'll reply as soon as he's able, or contact a Churchwarden. The Rector's day off is Monday. If you have a prayer request or enquiry, please ring **Churchwardens: Harry, on 07773065271 or Diane, on 270409.**

MAP
(Not to scale)



PLANNING APPLICATION NEWS & UPDATES OCTOBER & NOV 2022



In this section you will find details of planning applications received, comments made by your Parish Council, and any updates on previous planning applications.

NEW PLANNING APPLICATIONS:

22/01767/APP 30 The Green, Stoke Hammond MK17 9BY

Conversion of garage to habitable accommodation & extension of parking space.

This application had been seen before to which the PC had no objection, but Highways had requested design clarification for the entrance and parking area. The PC still had NO OBJECTION to this application.

22/00613/APP Brook Farm, Leighton Road, Stoke Hammond MK17 9DD

Erection of 42 dwellings including associated parking and landscaping.

Your PC had previously opposed a very similar application, and felt very little had changed so again resolved to OBJECT to this new application, citing the following reasons:

- *All previous grounds for opposing this application, submitted by Stoke Hammond Parish Council,*
- *No green space shown on the site plan and the distance to closest space being 800m away with the need to cross a main road to access it. Concerns raised that children will be tempted to play near the railway line.*
- *Concerns remain with the proximity to the railway and it was noted that Network Rail have also raised a number of concerns about this.*
- *Site traffic for residents is a major concern with the increased construction traffic through the village and along Brook Farm Close. Brook Farm Close is a narrow road and with cars parked out on the road, often on both sides, it makes access incredibly difficult.*
- *Only 15 visitor spots allocated for 42 houses. Parking is already an issue on Brook Farm Close with residents and visitors from Brookfields using Brook Farm Close for additional parking. Concerns were raised that parking from this new development will also spill out onto Brook Farm Close.*

22/02564/APP 7 Tyrells Road, Stoke Hammond MK17 9BS

Householder application for demolition of existing outbuilding and erection of two storey side/rear and single storey front/rear extensions.

Your PC had previously had no objection to a similar application. This new application detailed some minor design changes. Your PC NO OBJECTION to this new application.

22/02996/APP Orchard End, Hillersden Chase, Stoke Hammond MK17 9DH

Erection of 2no dwellings with associated parking and separate home office.

Your PC resolved to OBJECT to this application on the following grounds.

- *Hillersdon Chase is a narrow, single-track road and there are concerns regarding construction traffic getting to the site. It is a private road, which is already in bad condition.*
- *The houses are out of keeping with the area.*

- *Too much is being added to a small space and there is no provision for visitor parking.*
- *The area is prone to flooding and should be investigated for species such as the Great Crested Newt.*

22/03427/APP 26 Coleman Road, Newton Leys MK3 5QD

Conversion of garage to living accommodation.

Your PC had NO OBJECTION to this application.

22/02996/APP Orchard End, Hillersden Chase, Stoke Hammond MK17 9DH

Erection of 2no dwellings with associated parking and separate home office'

Your PC could not see any changes to this application since it was last considered, so resolved to OPPOSE this application. All previous grounds for opposing this application, submitted by Stoke Hammond Parish Council, remain.

22/03564/APP Fontaine House, Church Road, Stoke Hammond MK17 9BP

Householder application for the erection of a two-storey side extension and a single storey side extension.

There was quite a long discussion concerning this application with concerns being expressed in relation to the two-storey element of this application which was felt would significantly impact the back view of the original property. Should this application be approved it is essential that the building materials are prescribed to match the original materials. However, some Councillors thought there was no issue with the two-storey extension, but concerns were raised with the single storey extension.

Cllrs resolved to OBJECT to this application on the grounds it is one of the most important historic houses within Stoke Hammond and there are concerns regarding the single storey extension. It was felt that the single storey side extension is not in keeping with the rest of the building, specifically with the number and spacing of the windows and the flat roof.

PLANNING UPDATES:

22/002488/APP The Barns. Stoke House Farm, Stoke Rd, Stoke Hammond MK17 9DB

Demolition of existing car port and erection of an ancillary residential annexe.

Your PC previously supported this application but with caveat that the annexe could not in the future be sold as a separate residential property. Well, it would seem the planners were of a similar mind regarding this annexe being potentially sold/used as a separate property and thus REFUSED the application. They also felt the size of the annexe was to an unacceptable scale and would over dominate the site.

For further information/updates on these or other planning applications in our locality, please visit the following website selecting 'Aylesbury Vale' as the search area and then enter the application reference or use the map search facility:

<https://www.buckinghamshire.gov.uk/planning-and-building-control/view-and-comment-on-a-planning-application/>

ANSWERS TO MAVIS'S QUIZ 1/ Pele - Brazil 2/ Franz Beckenbauer - Germany
3/ Cristiano Ronaldo - Portugal 4/ Diego Maradona - Argentina 5/ Harry Kane - England
6/ Jurgen Klinsmann - Germany 7/ Bobby Charlton - England 8/ Lionel Messi - Argentina
9/ Kenny Dalglish - Scotland 10/ Gareth Bale - Wales



News from Buckinghamshire Council



18 November 2022

Dear Resident,

I wanted to write to you following the Chancellor's Autumn Statement and the impact the announcements have on us.

It was welcome to hear that further cost of living payments will be made to some of the most vulnerable, including people on means-tested benefits, pensioner households and people on disability benefits.

It was also good news that a further £1 billion will be made available for local councils to be able to help support households facing hardship - in Buckinghamshire this means that our 'Helping Hand' programme can continue to support those struggling with the cost of living. Overall, I am very pleased that the general theme is that the most vulnerable have been protected as much as possible, with benefits and pensions rising with inflation.

We also heard that more money is being proposed for adult social care while planned reforms are delayed – this does provide some help for councils to meet this immense cost burden. However, we will need to see the details of what this means in practice for Buckinghamshire and how much of the extra money is expected to be raised via local Council Tax.

Overall, we are continuing to digest the implications and impacts on our own budgets and uncertainty around financial pressures remains for all councils, not just here in Buckinghamshire. We know that with inflation at a 41 year high and with demand and costs rising very fast for all aspects of social care, our Council budget remains under severe pressure. We also recognise that household budgets remain a big concern and we know this is a very worrying time for many people.

How to access help – and the Children's Christmas gift appeal

I recently visited one of our local Foodbanks in High Wycombe. I was very impressed with the wonderful staff and volunteers at the Trust. They stressed how much they rely upon the council's Helping Hand team to refer people to them. I know I regularly mention how to access support in these updates, but it's such important information that I can't say it enough; if it captures just one more person or family that can be helped then it's worthwhile.

If you are struggling, there **is** help and support available through the council's 'Helping Hand' programme. This is for all households in Buckinghamshire that are experiencing

hardship. Please just pick up the phone or drop us a line – the team will look at your situation and offer the most suitable support that addresses your needs.

The Cost of Living advice has been pulled together in one place on our website so please take a look if you need it or pass this information onto anyone else you know of who might need some extra help. These pages include the detail of how to access the Helping Hand service.

If you think someone you know needs to access this information, please tell them to go to our website and they will see the link on the homepage.

The website also outlines ways in which people can offer their time, help or make a donation – food or financial.

If you want to make a financial donation, please go to the Heart of Bucks website and donate to our crisis fund, set up in partnership with them. The money is going directly to people in your local communities who need it most.

I'm so proud to be able to say this fund now stands at **nearly £130,000** – testament to the generosity of the people, organisations and businesses in our county. It also shows how we are all working together making a difference – the council, local charities, local organisations and businesses, all with the common goal of doing what we can to help local people.

Children's Christmas present appeal

We are all feeling the pinch and some of us might be taking a different approach to Christmas and gifting this year - also with the environment in mind. It remains the case though that for some of the most vulnerable children in Buckinghamshire, they will go without this Christmas. The annual **Christmas Present Appeal**, run by charity Inspire Bucks, has perhaps never been as important as this year. Often, the generous gifts and donations are **the only way some of the most vulnerable children in Buckinghamshire will get a gift this Christmas**. Therefore, if you are in a position to do so, please do consider making a donation to the fund – this will go directly towards buying a gift for children the council's social services teams work with, making sure gifts go to those most in need who otherwise would miss out.

Last chance to have a say on our spending plans for next year

As I've also said, we are in the process of setting our budget for the next financial year and it's exceptionally challenging within the current economic context of uncertainty and high inflation, which of course mean the costs of providing our vital services - like looking after vulnerable adults and children - have also risen sharply.

It's therefore more important than ever you feed in your views on our plans for next year's spend. We've had our 'Money Matters' survey live for some weeks now and it closes **this Sunday (20 November)** so please, if you haven't already, do take part using the link above. It takes less than ten minutes for you to provide the extremely important input on how you want your money spent locally. These views will all then be considered as part of the budget setting process.

Water pollution in Buckinghamshire

To close, I do want to draw your attention to two more important pieces of news, both linked to our local environment.

First, the recent work of our Transport, Environment and Climate Change Select Committee – they have undertaken a rapid review of **water pollution in Buckinghamshire's chalk streams and rivers**. These are, of course, rare and precious watercourses that must be protected. The review was commissioned after fears about an increase in discharges into our watercourses and the potential impacts of HS2 works on the chalk aquifer beneath the Misbourne Valley. It found that the biggest contributor to water pollution in our area is the water industry, followed by run off from roads that carries pollution directly into water courses. The review makes a number of recommendations to improve this position and I urge you to [take a look at its findings](#) on our website.

We will work very hard indeed to hold both water companies and the Environment Agency to account over their responsibilities in improving water quality for us all.

More funding for Electric Vehicle charging points in Buckinghamshire

Some great news - we have been successful in our largest ever single funding bid for money to increase the number of electric vehicle (EV) charging points in Buckinghamshire. We have successfully secured £400,000 from the Office for Zero Emission Vehicles which allows us to make a big push forward our target of 1,000 EV charging points in the county – it means we can put in a further 129 EV bays and our team will push forward with this work at the earliest opportunity. It's another example of the extent of the work we are doing to tackle climate change here in Buckinghamshire – and is timely good news when COP27 brings into sharp focus again the global climate challenge we all face.

Yours sincerely, **Martin Tett** – Leader of Buckinghamshire Council



• GET IN TOUCH •

ONLINE
Click here for our contact form

TELEPHONE
Call us on 0300 131 6000*

* Phone lines are open Monday to Thursday 9am-5:30pm, Friday 9am-5pm. Phone lines are closed on bank holidays.

To keep up to date with the latest news from Buckinghamshire Council, please follow us on social media:



Buckinghamshire Council

The Gateway, Gatehouse Road, Aylesbury, HP19 8FF
buckinghamshire.gov.uk

VILLAGE DIARY

Saturday 3 rd Dec	Bandeoke Music Night – Sports Club
Saturday 10 th Dec	Senior Citizens Xmas Lunch – Community Centre – 13.00
Friday 23 rd Dec	Pop up Pizza Night – Community Centre 17.30 – 20.30
Saturday 31 st Dec	New Year's Eve Party – Sports Club
Tuesday 3 rd January	Parish Council Meeting – Community Centre – 19.30
Saturday 14 th January	Community Breakfast – Community Centre 08.30 – 10.30
Friday 27 th January	Pop up Pizza Night – Community Centre 17.30 – 20.30

For Church dates/times please see the 'Church Services' section

ORGANISATIONS THAT USE THE COMMUNITY CENTRE

High Ash Scouts, Cubs (Beavers)

Every Thursday 17.30 – 21.30hrs

Contact: Dave Pollington 01525 270864

Buttons Pre-School

Monday – Friday 09.00 – 15.00hrs

Contact: 07973 158368

Louisa Harris Pilates

Contact: 01525 270501/07973 158368

Monday day/evening

Louisa.pilates@gmail.com

www.louisaharrisilates.co.uk

Joyful Tots

Every Friday 10.00 – 11.30hrs

Contact: Bethan 07803 805103

To Hire the Hall please telephone 07555 711929 or e-mail: enquiries@shcommunityassociation.co.uk

SH NEWS – ADVERTISING RATES

For 6 bimonthly editions: FULL Page - **£85.00** HALF Page - **£50.00** QTR Page - **£30.00**

To upgrade to full colour on rear cover, additional per edition cost:

FULL Page – plus £15.00 HALF Page - plus £10.00 QUARTER Page - plus £5.00

Note: Upgrading to full colour is on a per edition basis, not a commitment for 6 editions

Buckinghamshire Council	0300-131-6000
Aylesbury Vale Area – Buckinghamshire Council	01296-585858
Community Transport Co-ordinator	07729-699488
Registrar (<i>Births & Deaths</i>)	01296-383005
Registrar (<i>Marriages</i>)	01296-382481
Fly-Tipping on Roads	01296-382416
Social Care Services (<i>Emergency Duty</i>)	0800-999-7677
MK General Hospital	01908-660033
Stoke Mandeville Hospital	01296-315000
Luton & Dunstable Hospital	01582-491122
SH Gardening Club (<i>Eileen Curry</i>)	01525-270858
Clerk to the Parish Council (<i>Kelly Harris</i>)	07793-131810
Parish Council Chairman (<i>Malcolm Newing</i>)	07702 067966
Gt Brickhill Ward Councillor (<i>Phil Gomm</i>)	07778 117647
Gt Brickhill Ward Councillor (<i>Jilly Jordan</i>)	07740 308468
Gt Brickhill Ward Councillor (<i>Iain Macpherson</i>)	Not Available
MP - Buckinghamshire. (<i>Greg Smith</i>)	01296-714240
High Ash School	01525-261620
St Luke's Church (<i>Revd John Waller</i>)	01525-261062
St Luke's Church Warden (<i>Diane Webber</i>)	01525-270409
St Luke's Church Warden (<i>Harry Davies</i>)	01234-822780
Stewkley Methodist Church (<i>Mary Cottrell</i>)	01296 688741

Police non-emergency number 101

NHS Helpline non-emergency number 111

EDITORS NOTE

Gosh, how quick do the years seem to pass now, they say that happens as you get older, it only seems like yesterday I was celebrating the arrival of the new Millennium! I do of course have to say a big thankyou to all those who make the SH & NLS News happen, from the contributors, advertisers, the Parish Council and of course the small army of volunteers who deliver the SH News to your homes. Thank you All.

And to everyone out there, I wish you all



May I please have copy for the February/March 2023 issue by the **20th January**
 Greg Noble, Oak Farm, Bragenham Side, Stoke Hammond. MK17 9DB
 01525 270744 E-mail: gregnoble1980@aol.com



WASTE COLLECTION DATES

STOKE HAMMOND VILLAGE & NEWTON LEYS SOUTH

Waste Bin: 	Recycling Bin:  <small>Paper, glass, cardboard, plastics, cartons, cans & tins</small>	Food Waste Bin:  <small>Non-recyclable or compostable.</small>	Garden Waste Bin: 
	Wednesday 7 Dec	Wednesday 7 Dec	
Wednesday 14 Dec		Wednesday 14 Dec	
	Wednesday 21 Dec	Wednesday 21 Dec	
Friday 30 December		Friday 30 December	
	Friday 6 January	Friday 6 January	
Thursday 12 Jan		Thursday 12 Jan	
	Wednesday 18 Jan	Wednesday 18 Jan	
Wednesday 25 Jan		Wednesday 25 Jan	Wednesday 25 Jan
	Wednesday 1 Feb	Wednesday 1 Feb	
Wednesday 8 Feb		Wednesday 8 Feb	Wednesday 8 Feb

STOKE HAMMOND VILLAGE SHOW

WE NEED YOU

IF YOU WANT A VILLAGE SHOW IN 2023
THEN WE NEED PEOPLE TO JOIN US ON
THE SHOW COMMITTEE, TO HELP ORGANISE
PLAN & PUT ON THE SHOW

IF YOU FEEL YOU CAN SPARE SOME TIME, PLEASE CONTACT:

Ann Payne 01525 270151 or email: ann.payne@rowanhouse.org
or

Greg Noble 01525 270744 or email: gregnoble1980@aol.com

**THE COMMITTEE START TO MEET UP FORTNIGHTLY IN
MARCH, ALL THE WAY THROUGH TO THE AUGUST SHOW
DATE. WHICH FOR 2023 IS PLANNED FOR SAT 5TH AUGUST**

www.stokehammondvillageshow.com

3 LOCKS

STOKE HAMMOND

PIE AND A PINT OR CHAMPAGNE AND LOBSTER,
WE ARE THE PUB OF CHOICE FOR ANY OCCASION.



Book A Table

www.threelocksstokehammond.co.uk

Follow us on Facebook and Instagram

@**threelocksstokehammond**



Leighton Rd, Stoke Hammond,

Milton Keynes MK17 9DD

01525 270214

thethreelocks@oakmangroup.co.uk