



learn,  
laugh,  
live

# HWu3a

Newsletter of the  
Harborough Welland u3a

Issue No. 4 *Online version 16 extra pages!* April

## Step into Spring with HWu3a



## Step into Spring.

If you were not already aware, Spring is definitely here, and there are many HWu3a groups which offer a whole range of activities which might tempt you to get out there and shake off the Winter and Covid blues. Please remember that you need to be a 'signed up' member of the group and some groups are close to capacity, due to their popularity.

**Strolling.** We have two strolling groups, on the 2<sup>nd</sup> Weds of the month and also the 2<sup>nd</sup> Friday. The average distance is about three miles and further details for these and the other groups can be found on the HWu3a website. [Activity Groups – Harborough Welland U3A \(hwu3a.org.uk\)](http://Activity Groups – Harborough Welland U3A (hwu3a.org.uk))

**Half Day walking .** There are no fewer than FOUR half day walking groups, who average between 5 and 6 miles, sometimes with a pub stop. 1<sup>st</sup> Tuesday, 2<sup>nd</sup> Wednesday, 3<sup>rd</sup> Thursday and 4<sup>th</sup> Thursday.

**Evening Walking group.** This is obviously a seasonal group and we try to get back to the pub before nightfall. The first walk of 2022 will be on Tues 31<sup>st</sup> May and then hopefully on a fortnightly basis through the Summer. There is no fixed day for these short walks (4 miles)

**All Day walking group.** This group meets on the last Thursday of the month and can cover 10 – 12 miles on a good day. A packed lunch and/or pub lunch are part of the day's outing. These walks should be in a 20 mile radius of MH and often take us into Northants and Rutland. Not having your own transport should not be a problem for any of these groups as the members are a friendly bunch and car sharing is encouraged.



**Cycling.** When I asked Kevin Millard, the group leader for some details of this group's exploits, I was surprised to learn that there are relatively few thrills and spills while out on the road and lycra is **not** compulsory (but very popular nevertheless). Furthermore, the coffee stops and tea breaks would appear to form an essential part of every trip out. [Coffee shops on Google maps](http://Coffee shops on Google maps).

**Running.** There is no HWu3a running group but nevertheless some of our members do enjoy the Parkrun in Welland Park. Further details...

[Www.parkrun.org.uk/marketharborough](http://Www.parkrun.org.uk/marketharborough)



**Market Harborough parkrun** is a free, fun, and friendly weekly 5k community event. Walk, jog, run, volunteer or spectate – it's up to you. Getting ready for the Park Run in Welland Park in the spring sunshine (left to right) Bob Morris, Irene and Kevin Millard, Colin Cohen and Helen Salisbury. Planning to join us? Then come and say hello.

## Upcoming Events—Speaker Meetings at Methodist Church

**Monday 11th April:** This month we welcome speaker Geoff Harris with his talk on 'The London that No-one Tells You About'. His talk promises to be fast-paced and amusing. It will shed a light on some of the lesser-known facts about London, it's laws and strange inhabitants.

**Monday 9th May:** Looking forward to May, we welcome back Mark Temple who last year spoke to us about 'Stoneywell and The Gimsons'. This time, his talk is on 'The Life and Rhymes of John Betjeman'.

**The Harborough Welland u3a Open Day:** will be held on Monday 25th April from 10.30am – 12 noon at the Methodist Church on Northampton Road. It is the official launch of HWu3a and, as we hope to recruit new members, will be open to the general public to showcase our activities and raise our profile in the local community. The Mayor will attend and many of our groups will be represented, including the 'Jordan Jammers' who will provide two short musical sessions at 10.45am and 11.30am.

**Please note, there will be no 'Harborough Welland Get Together' in April; the next one will be on Monday 23rd May.**

### Hilary Pollak our representative on the Leicestershire and Rutland Network

Hilary joined SLu3a in 2020 but had been a member of Leicester u3a since 2015. Her passion is speaking French and that was her initial motivation for joining u3a. When she moved to Market Harborough, she researched French speaking groups and discovered Les Bavards. She was especially pleased that they kept going during the various lockdowns by meeting on Zoom or outdoors in the park. She now also belongs to our French Conversation Group. In addition to French, Hilary is also a member of the Architecture and New Experiences groups and, having joined the Coffee Hub during enforced isolation, discovered that one of the members of that group lives only a few doors away from her and so another new friendship has emerged.



Volunteering has been a big part of Hilary's life and when she lived in Leicester, she was one of the organisers of the Age UK Lunch Club, taking groups of elderly people out for meals. She is still Secretary of the Oadby Twinning Association, where her fluency in French is a great help. Another interesting volunteer role that Hilary has, is as a member of Friendship Force of Leicestershire. I had never heard of this but it is an organisation promoting friendship and peace through staying with people in other countries and living with a family for a short period of time. The visitors are immersed in the language, culture and traditions of the country to further understanding and friendship. Hilary's next project is taking a group to Guadeloupe and, as part of the experience she will be giving a group of German visitors a tour of Market Harborough in early July.

Hilary has had a number of different jobs, including working for the Prison Service in a variety of roles and the Civil Service, where she was able to put her fluency in French to good use. These experiences and organisational skills mean that Hilary will be able to contribute fully to her role on the Network committee. She is especially looking forward to finding out what she can learn from and share with other U3As in terms of interest groups and promotional activities. We are very lucky to have Hilary take on this role to represent HWu3a and we welcome her to our team of volunteers.

Kate Helm

## CAMBRIDGE

Wednesday 25th May

To include a guided tour of Kings College and grounds in the morning, and

Punting on the river in the afternoon.

Depart Market Harborough bus station at 09.00

And from Cambridge at 4.30

Cost £38

To book please ring Sue Colledge 0116 2593209

## HWU3A BARN DANCE

SATURDAY 21st MAY 2022

JUBILEE HALL, CONGREGATIONAL CHURCH MARKET  
HARBOROUGH

**LIVE BAND AND CALLER, BAR, LIGHT SUPPER**

7.30 till 10.30pm

Sharon Webb (07886 855931)

**Thank you for your support,  
all tickets have been sold.**

### Some Images of Cambridge



## HWu3a HOLIDAY - NORTHUMBERLAND 11 SEPTEMBER - 15 SEPTEMBER 2022

4\* DERWENT MANOR HOTEL, CONSETT - 4 NIGHTS HALF BOARD

The holiday includes trips to Alnwick Castle & Gardens, Holy Island,  
Chesters Roman Fort (Hadrian's Wall), Newcastle & Tynemouth

Cost per person sharing double or twin room is £579 Single room supplement is £91

This is booked through Norman Allen Group Travel and is using Swift Valley Coaches

*For further information please contact Maryan Richardson*

*Tel. 01858 462573 or email - [trips1@hwu3a](mailto:trips1@hwu3a).*

## Harborough Welland Facebook Page.

Well done to our Facebook administrators Mandy Thomson and Don West—at the time of writing we had 205 members to our page. Please support Mandy and Don by posting your articles and photos.



Jack Horton

## Art History



Olive Trees - Vincent van Gogh

Our next meeting is on 2<sup>nd</sup> May when we will look at a variety of paintings on the theme of 'Trees, Woods and Forests'. Trees have inspired artists for centuries and I look forward to an interesting selection chosen by members of the group.

Angela Deane

## The Coffee Hub (via Zoom)

TUESDAY, 26 APRIL – 10.30am – 11.45am

With the Queen's Platinum Jubilee celebrations fast approaching, the Coffee Hub will be having its own themed event on 26th April. Expect games, quizzes and photos celebrating the last 70 years. Treat yourself to a yummy cake or pudding to have with your coffee that has a royal or British name.

For more information, please e-mail: [d\\_a\\_smith35@hotmail.com](mailto:d_a_smith35@hotmail.com)

Denise Smith

## Birding Wednesday

We had a lovely sunny morning for this month's visit to Ravensthorpe Reservoir. The reservoir is a hidden gem, not far from Guilsborough and Coton Manor Gardens. It was completed in 1890 and provided water to the town of Northampton and to Coton Mill. There's a gentle two mile circuit through the woods, across the dam and back along the water's edge. We needed our boots as it can certainly get muddy in places at this time of year but it was an easy walk and is definitely well worth a visit for a peaceful walk in lovely surroundings. And there were plenty of birds to be seen. We spotted 26 species, including a very unusual Red headed Pochard, Grey Wagtails and a great Spotted Woodpecker. There had been sightings of a rare Black Redstart at Ravensthorpe, but we were not in luck this time. [Linda Lawton](#)

## Birding Thursday



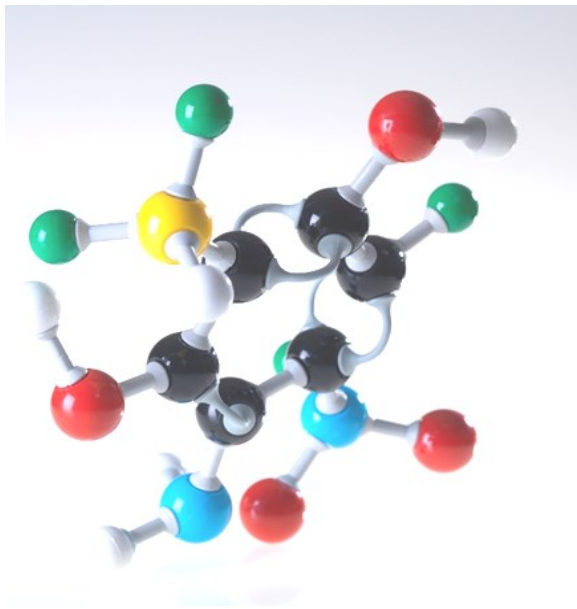
A lovely March Day, but owing to the previous day's heavy rain an **exceedingly** muddy one at Ravensthorpe Reservoir. So much time was spent looking down rather than up but even so there weren't a great many birds around. A Pied Wagtail at the car park, two Reed Bunting and a Chiffchaff in the woods was the best of the passerines. On the water a small flock of Pochard and a female Goldeneye were 'top of the bill' and, raptor wise, pretty much certainties these days, Red Kite and Buzzard. [Bruce White](#).

## ALPHABETTI 4

*Five more questions, the answers to which can be rearranged in alphabetical order.*

- 1.(**Hg**) An old-fashioned word for mercury.
- 2.(**Ra**) A highly reactive element discovered in 1898.  
By whom?
- 3.(**T**) A light weight, high strength, low corrosion structural metal.
- 4.(**K**) A silvery white metal, soft enough to be cut with a knife.
- 5.(**S**) A chemical element with a distinctive smell and two possible spellings

Answers on page 14



## Drawing and Painting

Last month, we explored the use of acrylics, guided by Sue who gave us a short demonstration, and then the use of pastels, guided by Joan who brought a range of pastels and paper for us to try out. It was very interesting to experiment with various mediums and materials, and our thanks to both group members. We shall begin April with another sort of stimulus: Anne is bringing in a picture to inspire us. At the time of writing, all I know is that she is entitling her project 'An Ear Worm', deliberately keeping us all guessing until next session. All will be revealed shortly . [Elaine Scarlett](#)



## Local History

It was certainly a first for our group, when the male speaker wore red patent leather thigh boots with high heels! Steve Pateman made quite an entrance and entertained us with the real story behind Kinky Boots – the film and musical. He gave us a brief history of his family business in Earls Barton, Northamptonshire, which made men's shoes, boots for WWI troops, fashion shoes and in the 60's onwards shoes for celebrities and pop stars and finally, after a period of decline in trade, speciality 'kinky' boots, which became world-famous.

This month we have a change to the planned programme, as the speaker from Boughton House is unable to come – we hope to rebook this talk for 2023. Len Holden will now talk to us about Copies, Fakes and Forgeries: An Alternative Art History. The meeting will be on Tuesday 19 April in the Methodist Church – doors will be open at 1.45 pm with the talk commencing at 2.15 pm. We look forward to seeing you all. - [Avril Pell and Ian Webb](#): [local.history@hwu3a.org.uk](mailto:local.history@hwu3a.org.uk)

## New Experiences

A huge thank you to Ruth & Jez Braker for hosting the latte art workshops at the Coffee & Cake Depot café at the Community Church in Bath St. With plenty of "Sludge" coffee and lots of hot "Silky Milky" we practised our high pours & low pours and ended up with some very interesting patterns on our Lattes and Cappuccinos. We finished with some lovely Jute coffee and cake and raised over £200 to support the work of the Church with water wells in Malawi. The next activity in April is darts at The Conservative Club (sorry already fully booked), then Croquet in May

[Kevin Millard](#)



**New to Zoom—TUESDAY, 26 APRIL - 9.30 am - 10.15am.** Want to be able to extend the range of activities you can do by connecting with others through Zoom? Then come and join our friendly beginners' session. You will be given information on how to put Zoom on your laptop, iPad, tablet, or smart phone and how to login. The session then explains how to adjust your settings so you can view meetings in different ways, using the Chat facility to ask questions, and use subtitles if these would be helpful.

Please e-mail for further information: [d\\_a\\_smith35@hotmail.com](mailto:d_a_smith35@hotmail.com)

## Petanque



We've welcomed a few new players to the Petanque group recently and now get over 20 every fortnight. The practice is paying off and we're getting some very close games. Ivor & I enjoyed a 12:12 draw against Nikki & Susan, just look at the grouping in this picture! Now that the weather is improving we've also started a half time coffee stop. [kevinamillard@gmail.com](mailto:kevinamillard@gmail.com)

Kevin Millard

## Papercraft and more

We had an enjoyable session this month; one of our members showed us how to use our broken jewellery and beads. All of us managed to make an interesting picture as we took to upcycling. It would be a good way of remembering passed loved ones as you could make a picture of their costume jewellery, or you can use your broken beads etc instead of throwing them away.

The members come up with ideas that they share with the group and we all have fun making cards, boxes and doing other crafts. There are one or two spaces for people to join us. However, some expertise in paper crafting is necessary

Jan Collins 01858 462409 or email [eldondon@btinternet.com](mailto:eldondon@btinternet.com)



## Cycling

We've missed a few rides since Christmas due to the ice, wind & rain, but have managed to get out a bit more recently, with Robert leading a local route from The Old Grammar School out to Hallaton & Medbourne. The 15 mile shorter ride on the 1<sup>st</sup> Friday and the longer ride on the 3<sup>rd</sup> Friday has been very popular, so the next ride will be on Friday 15<sup>th</sup> April, a 23 mile route from Welham to Tugby. We are a very sociable group and enjoy our coffee stops at various cafes en-route, see our Google map for details. We have plenty of space for new riders to join us, either on the short or longer rides, so please contact [kevinamillard@gmail.com](mailto:kevinamillard@gmail.com) if you'd like to join the group. Kevin Millard

## Wine Tasting

The Wine Tasting Group unfortunately missed its meeting in February because of an outbreak of Covid, and March's meeting was depleted with 2 members having succumbed to the disease.

Michael brought 3 wines, with his theme being wines to celebrate a family major birthday. The first wine – to accompany the canapes that he brought along too – was Lidl's Le Rocher de Saint Victor Picpoul de Pinet £6.50, 13%. This was a very refreshing and fruity wine that cut through even my Covid-dented taste buds, and was very much enjoyed by the group. This comes from the Languedoc-Roussillon region of France, an area better known for its red wines.

We moved on to the main course, which would at the actual birthday be either lamb with garlic or roast duck, represented to us by liver pate. The wine to accompany this was Aldi's Specially Selected Vacqueyras £12, 14.5%. This full-bodied, ferociously strong wine comes from the southern end of the Rhone valley and is mostly made of Grenache and Syrah. We enjoyed its good nose, fine colour and fruitiness, but were less convinced that it represented good value for money.

We ended the meal with dessert, profiteroles, for which Michael gave us a sparkling wine – Aldi's Specially Selected Cremant De Limoux £7.50, 12%, a rose which was just off-white and although not a sweet wine was far enough off dry to match the profiteroles. Another wine from the Languedoc region, this one was perhaps a little light in body for the food.

Jonathan Shaw +44 (0)7960 203375



## Walking Wednesday half day

Setting off from Church Langton down Church Causeway we reached East Langton. After a trek across the fields, we arrived at Thorpe Langton. The intention then had been to go over the Caudle but extensive, deep mud put paid to that! So, the track around the Caudle to Stonton Wyville was taken instead where we enjoyed a coffee stop (pictured) in the glorious sunshine. A little bit of road walking, then on the footpath back up the hill and we were back in Church Langton. Our thanks to Maryan & Caralyn for a good walk and natter, enjoyed by all 22 of us – a record number I believe!



Bruce White

## Walking Half Day 4 Thursday

In contrast to last month, our March walk was a warm and sunny day with very little wind, so it was ideal conditions for the walk from Saddington. Our thanks to Malcolm for organising and leading this, which was well supported, and took us up over the hill with views of the reservoir to our right, then on to Smeeton Hill Farm, and a pleasant route round via Smeeton Westerby and back to the pub for their customary excellent lunch. Mike & Brenda Saywood

## Friday Strollers

The rain held off so that 24 of us were able to enjoy our March stroll from Lubenham, through countryside and Adams Mile, where some of us had not been before. Thank you, Ann and Brian, for leading us and for organizing our meals at the pub. NB. The coordinators always recommend you wear walking boots or stout shoes for our strolls.

Julia and Colin Ford 01858 463129

## Walking All Day

The walk on 28th April 2022, will be led by Alec Hodgson, starts from St Mary the Virgin Church, Ashley LE16 8HF at 10.00am. The 8 mile walk, includes 8 stiles and a couple of hills, takes us to Brampton Ash, Stoke Albany and Wilbarston with a pub stop at the Fox Inn before returning to Ashley.

Eddie or Edith Dixon Tel: 01858 468758.

## HWu3a Steering Group

### Helen Salisbury, Chair.

chair@hwu3a.org.uk 07837 410575

### Stella Freeman, Vice-Chair.

vicechair@hwu3a.org.uk 01536 760124

### Dave Martin, Secretary.

secretary@hwu3a.org.uk 01858 440530

### Eileen Robinson, Treasurer.

treasurer@hwu3a.org.uk 07973 725034

### Ian Webb, Membership Secretary.

membership@hwu3a.org.uk 01858 440851

### Louise Elsome Group Coordinator.

groups@hwu3a.org.uk 07740 572956

### Andrew West, Treasurer Elect

treasurer@hwu3a.org.uk 07732 511572

### Jack Horton, Publicity.

publicity@hwu3a.org.uk 07511 749462

### Kate Helm, Marketing and STARS Coordinator

marketing@hwu3a.org.uk 07817 735784

### Stuart Irons, Premises Coordinator

premises@hwu3a.org.uk Tel: 01858 465287

### Liz Brett, New Members and Speakers

new.members@hwu3a.org.uk

speakers@hwu3a.org.uk 07907 631529

### Fiona Barnaby, Finance and Membership Support

## Coffee, Tea & Biscuits at the Monthly Meeting

A few of us went to learn to be Barista's (to make a latte' with a pattern on top) at a New Experience afternoon, (thank you Kevin) however we will stay with making coffee in the traditional way at Monthly Meetings as we don't want queues out of the doors.

Thank you, Julia, Toni at 2 days' notice, and Liz at very short notice for standing in when Covid struck others. [Colin Ford](#) Refreshment coordinator [telephone 01858 463129](#)

## Speaker Coordinator

In March popular speaker Bruce White reflected on the birds that he'd seen while on his U.K. travels during Autumn and Winter. He showed us a number of slides of some great photos of both common and more unusual birds for us all to look out for.

This month we welcome speaker Geoff Harris with his talk on 'The London that No-one Tells You About'. Geoff is an experienced speaker with over 40 years in the entertainment and hospitality business. His talk promises to be fast-paced and amusing. It will shed a light on some of the lesser-known facts about London, its laws and strange inhabitants.

[Liz Brett](#)

## Funny Ha Ha! Funny Peculiar? Not funny at all!

Jack and I and some other members were recently musing over what is currently considered funny and what is acceptable. We also commented on the practice of some people to apply today's values and beliefs to yesteryear comedians and their jokes. It was quite thought provoking and begged the question, which some contemporary comedians are asking:- Will all comedy be banned in the future? Will modern comics have to avoid all contentious issues and all jokes will become bland and only slightly amusing.

Obviously, humour evolves and changes. I can remember when simply swearing on screen was deemed to be hilarious. A speeded up Benny Hill chasing women, was made 'even funnier' with the canned laughter and trademark music which accompanied it. Now, the very phrases 'outrageously funny' and 'wickedly mocking' are rarely used as there will invariably be a victim and a #group to leap to their defence.

Even this week, the fallout from the Oscar ceremony has dominated the news. I am no fan of Hollywood and all its over hyped coverage but it was clear that Will Smith did not find comments about his wife funny at all. On the wider world stage, President Zelensky, a former comic actor has become something very different, very serious. The Third Age Trust is firmly a non political, non religious organisation so I cannot comment on the British Government and its relationship to comedy. However, I can refer you to the Daily Star newspaper, which shows no such hesitation in making a connection!

**So, what do **you** think? Are we entering an oversensitive period and comedy will be a victim? Or is it just a phase? Do tell us.**

## Groups Noticeboard

**The Family History Group** will hold its first meeting on Thursday 21st April (details in the group listing). The Group Leader team has been busy planning over the past few weeks and would welcome ideas and input from the members, especially those who already have experience in researching family

**Friday Strollers:** On Friday 13th May we meet at The Hare at Loddington NN14 1LA at 10.15 for a 10.30 start and to order lunch. Park in the car park which is to the left.

The stroll will take us through the village and past the recreation ground, it is a there and back route to take in everyone's preferred distance.

We should arrive back 12.15 ish, pub will accommodate 20 of us max.

Carol Harvey 07855 738706

**Walking - Third Thursday (Half-day):** The walk on the 21st April will start from the 'The Stag' at Maidwell. It will be led by Peter, starts at the usual time of 10.00am and will be between 4 and 5 miles and will finish around 12.30. The route hasn't been decided at the time this was published but will consist of the usual variety of surfaces including road, track and path. There are likely to be some stiles on the route but I will try to keep the number to the minimum. **If you let me know if you are coming** by email ([peterdevineuk@btinternet.com](mailto:peterdevineuk@btinternet.com)) or phone (01858 432886) I will be able to update you on the parking options.

**WALKING Half Day 4 Thursday:** Our next walk is on Thursday 28<sup>th</sup> April, starting from The Queen's Head, 20 Church Street, Billesdon, LE7 9AE. Josie and Pam are in charge for this walk, which is a circular route out of the village towards Skeffington, with three or four stiles, mostly hard surfaces, and lovely views. Please meet at 10.00 - 10.15am, so that we can order lunch and start by 10.30am. The pub has unfortunately lost its chef just at the moment, but they are still doing some excellent sandwiches, snacks, and chips. If you would like to join us, please contact Josie on 01858 464865 or Pam on 01858 440503, by Monday 25<sup>th</sup> April if possible.

**Wednesday Strollers:** The walk on Wednesday 11<sup>th</sup> May will be led by Fiona and Paul White. It is from Lubenham, involving a walk around the top end of Market Harborough by an uphill climb along a field path followed by a downhill stroll to return via Adam's Mile, the line of the disused railway track. We meet at the Coach & Horses, 54 Main Street, Lubenham LE16 9TF at 10.30am. If you wish to come along please contact Fiona email [fionawhite2011@hotmail.co.uk](mailto:fionawhite2011@hotmail.co.uk), phone 07833 531184) by the Monday 9th May.

John and Vivian Hammond

### First Evening Walk

First Evening Walk, will take place on Thursday 31<sup>st</sup> May, 4.5 miles from Saddington.

[Evening.walks@hwu3a.org.uk](mailto:Evening.walks@hwu3a.org.uk) for further details.

## Notice Board Continued:

There has been a very positive response to starting up an **Italian Beginners Group** and arrangements are ongoing for a May start.

**Next question.** *Is the following piece, hilarious, mildly amusing, none of the above?* If you enjoy funny scripts, stories etc, please read the following from one of our contributors. The author is quite thick-skinned and welcomes 'criticism to improve his art'. Please, don't hold back.

### The customer's always right(?).

*This sketch is set in the distant past; before mobile phones and laptop computers. A time before call centres and, automated choices, 'Press One for ..'. Then, it was even possible that if you phoned a small company, you might even get to talk to the owner....*

**Mr. Gardener:** Hello, Gardener's Insurance, everything covered, nothing at risk.

**Mrs. Flowers:** Oh, hello. I wonder if you could help.

**Mr. Gardener:** Of course, madam, what seems to be the problem?

**Mrs. Flowers:** Well, it's to do with my garden. There's a problem.

**Mr. Gardener:** Oh, is there a shed? Do you need cover for your garden contents?

**Mrs. Flowers:** No. It's my bulbs. My mixed narcissi to be precise.

**Mr. Gardener:** Really? What exactly is the problem?

**Mrs. Flowers:** Well, those pesky squirrels, they live in the park over the way, they dig them up and eat them. No matter how deep I bury the bulbs, they will dig them up and run off with them. I'm on my third bag now and at 7/6, they're not cheap.

**Mr. Gardener:** Well, I'm not sure how I can help...

**Mrs. Flowers:** Percy, said, (that's Percy Thrower, he's on TV) he said that I must ensure that they are protected and kept safe.

**Mr. Gardener:** Well, I really don't think that we have a policy that will cover this. In fact, I don't think there is any policy which is squirrel related. I'm very sorry.

**Mrs. Flowers:** But the other insurance man I phoned thought that you were the very person, Mr. Gardener.

**Mr. Gardener:** Really? I don't suppose he gave you a quote, by any chance?

**Mrs. Flowers:** Actually, he did. *Gardener's Insurance, everything covered, nothing at risk.*

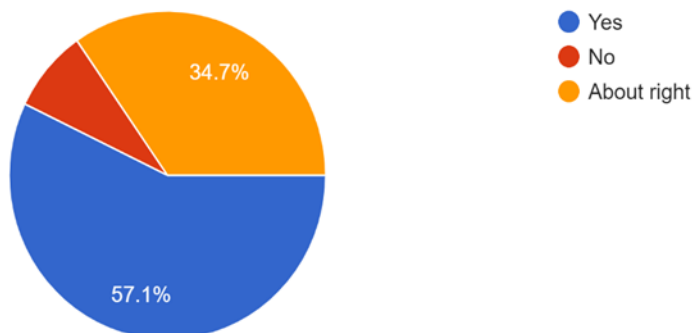
**|And if you think you can do better ....**

**Jubilee Food Bank** The Methodist Church have arranged a monthly pick up for donations to the [Jubilee Food Bank](#) based in Market Harborough. They will pick up our contributions on the **first Tuesday of each month**, these can be put in the plastic tub/s marked 'Food Bank' located just inside the entrance doorway of the church. The current Food Bank shopping list can also be accessed with the Google search: **-'Jubilee Food Bank Market Harborough'** Items most in need at present are: Tinned Meatballs; Tinned Red Meat; Tinned Chicken in Sauce; Tinned Fruit; Tinned Potatoes; Tinned Rice; Hotdogs; UHT Semi Skimmed milk; Crackers; Custard, Sugar (small bags); Corned beef; Pasta Sauce; Sweetcorn. They do not require:- Beans (Baked Beans, Chick Peas, Red Kidney Beans) or Biscuits

## A brief summary of some of the readership survey we carried out recently.

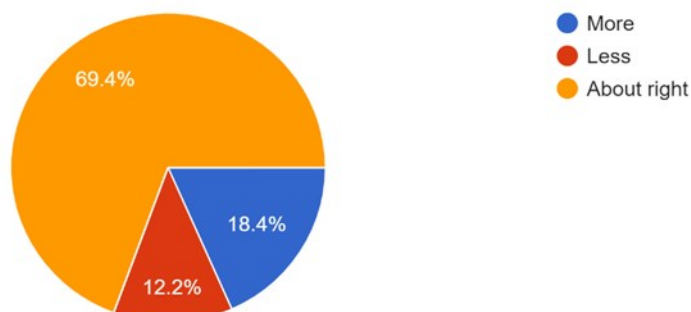
1. Generally speaking, are you happy with the new look of the Newsletter?

49 responses



2. Articles and interviews - more or less?

49 responses



Interviews can be very interesting but lately they have been rather long.

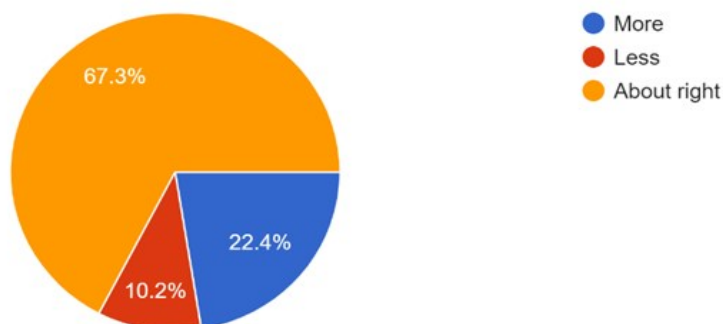
A range of articles on diverse subjects. Short interviews of members interests

Since my stroke I have not been participating in u3a as regularly as I would like but am happy with things as they are so far

I like knowing background of committee and group leaders

3. Reports from groups

49 responses



Encourage interesting articles that inform readers about the group - they may want to join it!

More coverage should be on the website

Thus, gives potential new members more information.

## Survey Respondent Comments Continued:

The website is the place for these

Would be good if more groups wrote an article after their monthly meetings

There were about 20 write ups in the last issue. Perhaps other groups could say what will happen in their next group meeting.

Every group should write something

Some reports are overly long and need strong editing – suggest a word length editing

Real events in real time – good to hear how the events were undertaken and how they got on

Some groups never provide anything. What exactly do they do?

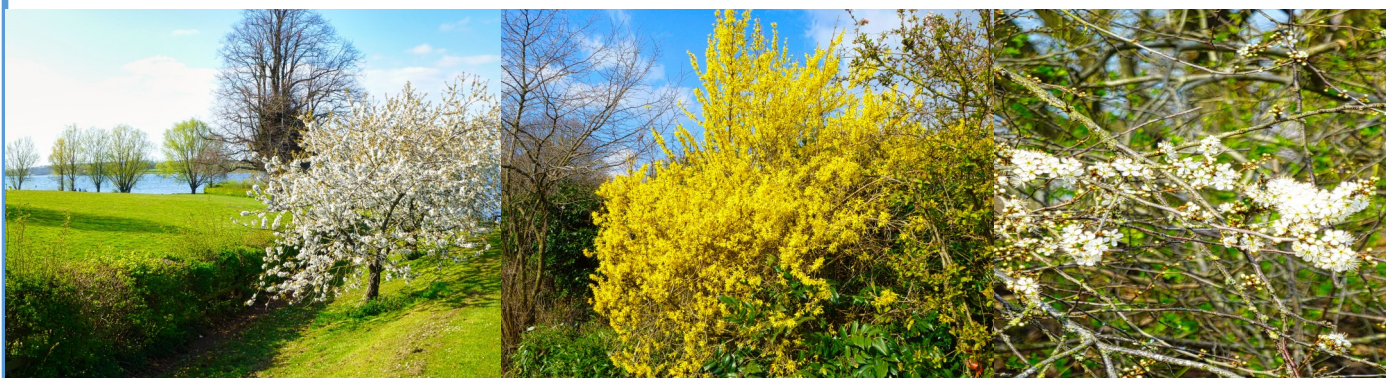
Some could be shorter and contain less detail about meetings which have already taken place

**What do you think – let us have your views and comments: [newsletter@hwu3a.org.uk](mailto:newsletter@hwu3a.org.uk)**

Thank you – Dave Martin and Jack Horton.



**Some images of Spring time::** please send us your photos to include in the newsletter.



With two successful photographic groups in HWu3a have any members entered the U3A fortnightly photography competition? '[u3a fortnightly Competition](#)'

Helen Salisbury

## ALPHABETTI 4

**Answers** 1 Quicksilver    2. Radium. (Pierre & Marie Curie)    3. Titanium

4. Potassium.    5. Sulphur (UK) Sulfur (US)

# INTEREST GROUPS

Reminder: Always contact the Group Leader before attending a group – do not just turn up.

## MONDAY

Art History	Angela Deane	01858 431111	Congregational Ch.	1st Monday	10.00 am
Book Group	Jean West	01858 434914	Theatre Lounge	3rd Monday	2pm
Crafting for Charities	Helen Salisbury	07837 410575	Louisa's Place	3rd Monday	2.30pm
French Refreshers	Rosemary Holden	01858 682623	Please call	Weekly	11.00am
French Improvers	Julie Jarosz	01536 712119	Please call	Weekly	pm
French Rendez-vous	Marlis Naef	01858 466931	Please call	Weekly	2.30–4pm
Needlecraft	Anne Healy	01536 760346	Com'ity Church	1st & 3rd Mon	2.00pm
Petanque	Kevin Millard	01858 468015	Fairfield Rd C.C	1st & 3rd Mon	10 –12:00
Poetry	Ann Hawkins	01858 467164	Cong.Hall Lounge,	1st & 3rd Mon	10.00 am
Quilty Pleasures	Diane Miles	01858 468357	Gt Bowden Village Hall	1st/3rd Mon	2–4pm
Songs of Leonard Cohen	Jonathan Chappell	0116 279 2915	Com'ity Church	4 <sup>th</sup> Monday	2pm
Table Tennis 1	Keith Keeble	07795 434076	Please call	Weekly	Morning
Wine Explorers	Melanie Nash	07939 872204	Please call	2nd Monday	7.30pm

## TUESDAY

Architecture	Colin Cohen	07973 348817	Methodist Ch.	4th Tuesday	Afternoon
Bookworms	Ronnie Leech	01858 410072	Baptist Church	2nd Tuesday	2.30pm
Bridge—Social	Don Collins	01858 462409	Bowls Club Lt.Bwdn	Weekly	2 pm
The Coffee Hub	Denise Smith	07527 801778	Zoom	4th Tuesday	10.30am
Country Dancing	Sharon Webb	01858 440851	Cong Church	4th Tuesday	2–4pm
French – Les Bavards	Sheridan New	07795 872496	Louisa's Place	weekly	10.30
Listening to Jazz	Mike Goldsmith	01536 770122	Please call	last Tuesday	2.15–4.15
Local history	Avril Pell	01858 414871	Methodist Ch.	3rd Tuesday	2–4pm
Music Appreciation	Colin Cohen	07973 348817	Please call	3rd Tuesday	10.00am
Music, Exploring	Elizabeth New	07749 908907	Com'ty Church	1st Tuesday	10.00 am
New to Zoom	Denise Smith	07527 801778	Zoom	4th Tuesday	9.30am
Photography–Tues	John Hammond	01858 434272	Cong Church	3rd Tuesday	2.30pm
Singers–HWu3a Choir	Joy Swallow	01858 462368	Cong Church	2nd/4th Tues	10.30am
Ukuleles	David Evans	01858 463045	Methodist Church	Alternate Tues	2–4pm
Walking Half Day 2	Diana Baxter	0116 279 2947	Outside	1st Tuesday	Various
Wine Appreciation	Bob Crocker	01858 468531	Please call	1st Tuesday	7pm

## WEDNESDAY

Badminton	Carole Winfield	01858 432540	Meadowdale	Weekly	5.45–7pm
Belleplates	Pam Duffin	01858 414975	Com'ty Church	Weekly *	2–4pm
Birding Wednesday	Linda Lawton	01858 880503	Outside	2nd Wed	Morning
Book Group, The Sleuths	David Still	07746455193	Please call	1st Weds	2.00pm
Italian All Comers	Franc Colombo	01858 431473	Zoom	Weekly	Morning
New Age Kurling	Jane Wilkins	01858 461801	Cong Church	1st Wed	2.00pm
Quilting	Vivian Hammond	01858 434272	Com'ty Church	3rd Weds	2.00pm
Quiznight	Dave Martin	01858 440530	Zoom	Last Wed	7.30pm
Railway Exploration	Dudley Brown	01858 419134	Bowling Club	3rd Wed	10.00am

Scrabble for Fun	Lesley Milsom	01858 419874	Bowls Club Lt.Bwn	4th Wed	Morning
Table Tennis 3	Jenny Acaster	01858 446862	Leisure Centre	Weds Weekly	9.00am
Transport Group	Michael Milsom	01858 419874	Bowling Club	1st Wed	10.00am
Walking Half Day 1	Bruce White	01858 467976	Outside	2nd Wed	Morning
Walking, Wed. Strollers	John/Vivian Hammond	01858 434272	Various	2nd Weds	10.15 am

#### THURSDAY

Birding Thursday	Bruce White	01858 467976	Outside	3rd Thursday	Morning
Crotchety Knitters	Stella Freeman	01536 760124	Community Ch	4th Thursday	2.30pm
Drawing & Painting	Elaine Scarlett	01858 432029	Oxendon Village Hall	1st/3rd Thurs	Afternoon
Family History	Maryan Richardson	01858 462573	Community Ch	3rd Thursday	10am-12
French Conversation	Melanie Nash	07939 872204	Please call	Weekly	2.30pm
Garden Group	Stella Freeman	01536 760124	Meth Church (Winter)	3rd Thurs	2pm
History, Aspects of	Ernie Parsons	01536 760141	Desborough FC	4th Thursday	Afternoon
Ancient Greek Plays	Jill Nisbet	01604 882672	Community Ch	1st Thursday	2.00pm
Spanish Beginners	Don Collins	01858 462409	Methodist Church	Weekly	2.00pm
Spanish Improvers	Don Collins	01858 462409	Methodist Church	Weekly	10.00am
Table Tennis 2	Jenny Acaster	01858 446862	M H Leisure Cntr	Weekly	Midday
Tennis	Rita Moth	01858 432275	Gt Bowden Tennis	Courts Weekly	10.00am
Theatre of the Absurd	Jonathan Chappell	0116 2792915	Community Ch	2nd Thursday	2.00pm
Walking All Day	Eddie/Edith Dixon	01858 468758	Outside	Last Thursday	Various
Walking Half Day 3	Alastair/Chris Willis	01858 419262	Outside	3rd Thursday	Various
Walking Half Day 4	Mike & Brenda Saywood	01536 770431	Outside	4th Thursday	Various
Wildlife	Diana Baxter	0116 279 2947	Outside	2nd Thursday	Various
Wine Tasting	Jonathan/Naomi Shaw	01858 682133	Please call	3rd Thursday	Various

#### FRIDAY

Cycling	Kevin Millard	01858 468015	Outside	1st & 3rd Fri	10.30am
Photography Friday	Phil Aldridge	07734 903737	Zoom/Outside	3rd Friday	Afternoon
Jordan Jammers	Alan Clementson	01858 461088	Please call	Weekly	Afternoon
Papercraft & More	Jan Collins	01858 462409	Foxton VH	1st/3rd Fri	Morning
Discovering Poetry	Jill Hart	01858 469663	Methodist Ch, Upper Rm	1st Friday	10.00am
Singing for Fun	George Cashell	01858 467616	Methodist Church	2nd/4th Fri	Afternoon
Walking, Fri. Strollers	Colin & Julia Ford	01858 463129	Outside	2nd Friday	10.15am

#### SUNDAY

Singles Sunday Lunch	Jan Tilley	01858 461186	Various	1/2/4 Sundays	Various
Music - 60s	Alec Hodgson	01858 288923	Oathill Pub, M H	3rd Sunday	7.00pm

#### OTHER

Walking—Evening	David Martin	01858 440530	Outside	Summer, Various	Various
New Experiences	Kevin Millard	01858 468015	Various	Various	Various

**COPY DEADLINE for May newsletter: Tuesday 26th April 2022**

Please send contributions to:  
[newsletter@hwu3a.org.uk](mailto:newsletter@hwu3a.org.uk)



## ***Welcome to Page 17, and Beyond ...***

The first part of the newsletter is an uploaded version of the printed April newsletter. But now that we are online, we have the space to include many more features and articles that couldn't possibly fit into the paper copy.

This is not a dumping ground, the cutting room floor or any other second class compartment idea. Although, if contributors miss the deadline for the newsletter, their reports might end up here by default! Think of it, if you will, as Pioneers heading out West, looked out at limitless opportunities; you are looking at the infinite possibilities of Cyberspace.

We hope that you enjoy this month's selection AND PLEASE do not hesitate to contribute. We also look forward to any feedback as this is clearly an experimental stage of the process.

D.M & J.H

## **CONTENTS**

Page 17, 18	Introduction, Writing for Fun
Page 19	Wine Group report, extended
Page 20 –22	All day walk, extended
Page 23, 24	Peregrines in MH, Don West
Page 25	WORDLE, Aspects of History
Page 26. 27	Architecture Group
Page 28	Photo Quiz
Page 29	Petanque, <b>STOP PRESS NEWS</b>
Page 30	school's out!
Page 31	Newsletter Survey report, contd
Page 32	What's next? May Issue.

Apologies for the absence of hyperlinks—we are receiving training on this and hope to include links to the World Wide Web in future editions. D.M

## ***WRITING FOR FUN ... Unfortunately, this group did not make it to fruition.***

*Nevertheless I enjoyed meeting, Tony, Mary and Toni and listening to their ideas and appreciating their creativeness.*

*Did you ever wonder what happens behind the counter at the Refreshment bar? Here is Toni's account of what happens, Marigolds 'n all ...*

### **HELPING OUT IN THE KITCHEN WITH REFRESHMENTS AT THE MARCH HWU3A ORGANISERS – COLIN AND JULIA FORD.**

Getting there early so we can sort things out, Julia does coffees, I do the teas, and Colin gets the orders for drinks and biscuits for the rest of the helpers who are all busy, busy, busy setting things up.

Liz arrives who is to replace Carol (who telephoned Colin to let him know that she was unable to help because she had Covid). Liz says she will do the washing up and she has brought her Marigolds, which we are pleased to hear, we can concentrate on serving the hordes.

9.45pm and we seem ready to go, our customers start to trickle in, nice and steady.

Nearing 10.00 am, here they come fast; forgetting to queue, so Julia and I do a dance back and forth behind the counter, both doing coffees and teas. Lots want coffee, few want tea, and some want cups, and some want mugs, all want serving so they can get to their seats, the talk starts soon.

10.20 am the shutters go down, the chaos is over but not for us – a little more rush. I help Liz with the rest of the cups by wiping up; Julia does a sterling job of cleaning and tidying up, then into the hall for the talk and a sit down at last!

The talk has finished, people are going but back to the kitchen for us. A few more cups come in, we deal with that and then back to the car. Julia and Colin do not live far and gave me a lift this morning.

*Toni Parsons (one of the volunteer helpers for the kitchen).*

*Mary was following the theme of 'Humour' and I really like the subtlety in the twist. Must not say anymore ...*

### The Storm

The rain really was torrential, and my incredibly expensive designer raincoat was no help at all, within minutes I looked like a drowned rat, which was very bad for my self-esteem, but at least meant that I could take it back to the shop that sold it to me to complain.

Which I did of course, and initially the manager was very conciliatory (even offering me a cup of coffee, which I graciously accepted, even though it was instant)

He tried to make excuses, as you would expect. He asked why I had not tightened the hood.

'Because' I explained patiently 'I suffer from panic attacks if my neck is constrained'.

He then suggested I should carry an umbrella. He had no right to make demands like that, umbrellas are heavy, and I am a frail old lady. But not only did he ignore my concerns, he started to make awkward comments. The coat, he pointed out was several years old, so why had this problem not emerged before?

I had to give up in the end. Sadly, I am simply a victim, unable to stand against the thoughtless behaviour of greedy shopkeepers.

And even more sadly, I suspect that I will get no more sympathy when I take it back to the charity shop I bought it from.

*Mary Daniels*

So, **no Writing for Fun group**, but there is always a home here for original writing – prose, poetry, play script... If you would like a common theme, borrowing Tony R's idea; – One word, with all its different possibilities ... **SPRING** *noun, an elastic device, typically a helical metal coil etc.*

verb, [leap](#) · [jump](#) · [bound](#) · [vault](#) · [hop](#)

**Go on, you know you want to!**

Jonathan kindly allowed me to restyle his report. His report, like many in the printed version, respect the word limit that we use to maximise the number of articles which we can fit into 12 / 16 pages. The details are the same but I wanted to demonstrate what can be done when space is not a limit. Thank you Jonathan. D.M



**The Wine Tasting Group** unfortunately missed its meeting in February because of an outbreak of Covid, and March's meeting was depleted with 2 members having succumbed to the disease.

Michael brought 3 wines, with his theme being wines to celebrate a family major birthday. The first wine – to accompany the canapes that he brought along too – was Lidl's Le Rocher de Saint Victor Picpoul de Pinet £6.50, 13%. This was a very refreshing and fruity wine that cut through even my Covid-dented taste buds, and was very much enjoyed by the group. This comes from the Languedoc-Roussillon region of France, an area better known for its red wines.

We moved on to the main course, which would at the actual birthday be either lamb with garlic or roast duck, represented to us by liver pate. The wine to accompany this was Aldi's Specially Selected Vacqueyras £12, 14.5%. This full-bodied, ferociously strong wine comes from the southern end of the Rhone valley and is mostly made of Grenache and Syrah. We enjoyed its good nose, fine colour and fruitiness, but were less convinced that it represented good value for money.



We ended the meal with dessert, profiteroles, for which Michael gave us a sparkling wine – Aldi's Specially Selected Cremant De Limoux £7.50, 12%, a rose which was just off-white and although not a sweet wine was far enough off dry to match the profiteroles. Another wine from the Languedoc region, this one was perhaps a little light in body for the food.

Regards  
Jonathan



*I have written an extensive report of the All Day walking group's trek around Oundle. Not only was it a great walk but also we saw many places of interest and I wanted to share this with you in an extended format.*

*D.M*

All Day Walk Thursday March 31<sup>st</sup>

Oundle and River Nene circular.



If you need reminding, this was the scene in Market Harborough at 8.00 a.m on 31/03/22.

Nevertheless, on the strength of a favourable weather forecast for the rest of the day and fortified by limitless optimism, a group of hardy walkers assembled in the sunshine at the rendezvous point, Ashton Road, Oundle.

The immediate task was to cross a very busy A427 before joining the path which initially led us along the banks of the River Nene. A spiteful hailstorm assailed us as we crossed the river, but as forecast, the sun came out and

we could continue. The going was surprisingly firm underfoot, probably a result of the sunny, dry weather which everyone had enjoyed for the two previous weeks.

The group took a slight diversion to take us into the village of **Cotterstock**; the churchyard to be precise, for a coffee break. Around here there are several converted mills which make very attractive riverside homes. Our route took us back through Oundle and out to **Barnwell Country Park**. This is a marvellous facility and looks well worth a visit with the grandchildren! Although some photos in the



Visitor Centre taken December 2020, showed clearly that this area is vulnerable to flooding.

We were soon passing Oundle Marina which is very extensive and no doubt many boats will be seen on the river soon once the engineering works on one of the locks is completed. The river was very much a feature of the walk, indeed there were several way markers displaying the fact that we were following the Nene Way.



The next section of the walk took us into the village of **Ashton**. It was looking particularly attractive as we approached, bright daffodils out on the village green. We were impressed with the delightful thatched houses which all looked chocolate box perfect. On reading the information board, we learnt that the original village had been razed in 1904 and one designer put in charge of the whole rebuilding project. His penchant was thatched rooves and flint buildings! The pub had also been rebuilt, this time in 1990 due to a fire. Probably the only pub I know of, named after an endangered butterfly – **The Checkered Skipper**. We certainly enjoyed the hospitality there even if we were driven off the patio and back into the pub due to a very cold wind that had sprung up.



One more crossing of the Nene and we were almost back. As 'Bob of the Antarctic' led us over the footbridge, yet another squall of hail but again it soon passed and we got safely back to the cars where a debate ensued as to the actual length of the walk. My map stated 10.45 miles.



If you fancy retracing our steps, **here is the map below**. When Helen and Bob devised the walk they actually linked two loops together, Both Ashton and Barnwell Country park are worth visiting – probably on a warm spring day!

Thanks to Helen and Bob for organising and leading the expedition!

D.M



The green at Ashton



Barnwell Country Park

## Oundle all day

10.45 mi 4h 21min ★★★★★

*I hope that this proves useful and again it demonstrates what we can do with our online newsletter. The map is reproduced courtesy of the Ordnance Survey. D.M*

CS- 236852-B9K5X7



Watch this spot.

***Don West – Nature enthusiast and photographer***

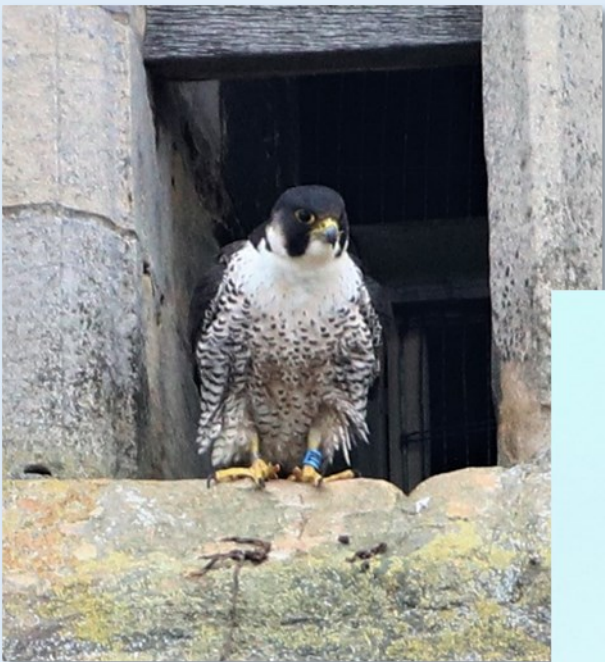
I am a keen wildlife photographer and spend a lot of time watching the peregrines and also the local otters. Hopefully you have seen some of my otter videos on the HW u3a facebook page.

I have been watching the peregrines on the spire of Saint Di's for around a couple of years now. The female arrived in 2020, having been born in Bristol. The male joined her early in 2021. I have been working with the church for some time to gain approval to place a nesting tray in the spire, unfortunately it came through to late for this year's breeding season. See the attached document I created in support of that.

The female has recently disappeared as there is nowhere for her to lay eggs and has been seen yesterday trying to take over the nest tray on the Leicester Cathedral. Peregrines are very aggressive birds and will fight like fury.

There has also been a bit of a battle going on with the males. The resident male from the Cathedral was found injured in Leicester on Monday. Our male has continued to roost on the spire and a second male was seen attacking him on Saturday afternoon. I suspect our male has also gone to Leicester and was probably responsible for the death of the other male.

*Don West*





## Aspects of History – Next meeting 28<sup>th</sup> April

We have resumed our small and friendly monthly meetings at 2 pm in the Desborough Town Football Club lounge (Braybrooke Road, Desborough);

We shall then conclude looking at “*The Stuarts in Exile*” and have a short account of their late C19 followers, “*The White Rose Society*.”

**All welcome. Please contact Ernie on 01536 760141 for latest information.**

## WORDLE – Are you a fan?

When we asked this question in the March issue, no-one replied. It wasn't intended to be a rhetorical question. So do we assume that everyone is a fan, obviously. Or does nobody have a clue what we are on about?

If the latter, fear not, help is on its way. But first a little background. Wordle is like a sophisticated electronic version of 'hangman'. You get six lives in which to guess a five-letter word. It's amazing just how many five-letter words are out there, most of them everyday words. Recently there have been both exotic and arcane words, RUPEE and EPOXY among others. Last week, NYMPH caused much consternation as aficionados searched in vain for a vowel!

The history of the game goes back to during the Covid lockdown. A software developer, **John Wardle**, invented the word game for his partner as a little hobby. After sharing it with friends, it went 'viral' and eventually the New York Times made him an offer that he couldn't refuse.

Rest assured, Mr Wardle is a very comfortable! 💰💰💰💰💰

So, if you are slightly curious about this, why not sign up for a Zoom Introduction to WORDLE. Email [quiznight@hwu3a.org.uk](mailto:quiznight@hwu3a.org.uk) and you will receive an invitation for either a morning (10:30) or afternoon (14:30) session (45 mins) on 27<sup>th</sup> April.

If you fancy trying 'Human Wordle', my grandson's own invention, just ask. D.M



We spotted this lovely old sign in Turville, Buckinghamshire.

Are there **any cartoonists** out there?

What do you think a modern version might look like?

I have started you off with the signage ...

**Have you any similar photos?**



*If you are a member of the Architecture group, (one of our largest groups with over 100 members) you will have already received this excellent document from Group Leader, Colin Cohen. He was happy for me to share it with you. The links to the photos are due to copyright issues.*

## **Welcome to the April 2022 edition of the Architecture Group newsletter.**

### **March meeting**

At our March meeting the group enjoyed presentations on three very different topics. Hilary Hearnshaw enthused over the work of Renzo Piano featuring the Pompidou Centre in Paris, the Shard in London, the Valletta City Gate in Malta with its distinctive brise-soleil façade used to modulate air flow, and his replacement of the collapsed motorway bridge in his home town of Genoa (click to see photo). Hilary emphasised his philosophy that architecture imposed on the public should be seen as art. [genoa bridge - Bing images](#)

Roger Lewin showed slides and a short video of eleven medieval Ethiopian churches commissioned by King Lalibela which were hewn from monolithic rock rather than constructed in a traditional manner. These huge blocks were chiselled out to form doors, windows, columns etc on a number of different levels. Now a UNESCO World Heritage site, it is home to a community of priests and monks and a place of pilgrimage. [saint george hewn church - Bing images](#)

Trish Woods concluded with a celebration of Le Corbusier's maxim that the history of architecture is also the history of the struggle for light with a display of windows made possible by the development of modern glass technology. Examples from around the world included playful multicoloured nursery school bay windows in Japan (see photo below), kinetic buildings in England, Poland and Iran where parts of the building move to allow more sunlight in, and a Japanese window framed to focus the internal viewer's eye on the external snow scene outside.

[japan school bay windows - Bing images](#)

*Three very different and enjoyable presentations, showing once again the range of knowledge and interest within our group.*

### **April meeting**

Our next meeting will be held at 2pm on Tuesday 26 April. The speaker will be my good friend Barry Frenchman, and the topic will be **"Shaws of Darwen: terracotta and faience in architecture"**. Royal Institute of British Architects – Women's History Month To celebrate Women's History Month, the RIBA has launched a new collections research guide highlighting some of the inspiring women in architecture represented in the library and collections. Learn about some of these pioneering professionals, such as Violet Shewell Morris and Elisabeth Scott, and find out how you can access our collections, in person or online.

[https://www.architecture.com/explore-architecture/inside-the-riba-collections/research-guidewomen-inarchitecture?utm\\_source=Adestra&utm\\_medium=email&utm\\_term=&utm\\_content=New%20Research%20Guide%3A%20Women%20in%20Architecture&utm\\_campaign=Enews%202022%20%2023](https://www.architecture.com/explore-architecture/inside-the-riba-collections/research-guidewomen-inarchitecture?utm_source=Adestra&utm_medium=email&utm_term=&utm_content=New%20Research%20Guide%3A%20Women%20in%20Architecture&utm_campaign=Enews%202022%20%2023)

**Michael Wood's Story of England.** This excellent series of programmes about the history of England is being repeated on BBC4 and is also available on BBC iPlayer. The historian Michael Wood tells the story of England from the Romans to the present day, using as a case study the history of three villages - Kibworth Beauchamp, Kibworth Harcourt and Smeeton Westerby. Although the series is primarily about history it features a lot of local architecture.

<https://www.bbc.co.uk/programmes/b00txydj>

**London Open House 2022** The Open House Festival is a two week celebration of London's housing, architecture and neighbourhoods. This year it runs from Thursday 8 to Wednesday 21 September. It offers a great opportunity to visit historic houses, monuments, government buildings, town halls, private houses, places of worship, City Livery halls and many other types of buildings. Details of the various events can be found on the Open House website.

<https://open-city.org.uk/open-house-festival>

**Historic England – Aerial Photos** The archives of Historic England hold millions of photographs, and they have recently made 400,000 aerial photos available on their website. If you click on the link below you can look for aerial photos of where you were born, where you live now, your favourite football ground or the places you like to visit.

<https://historicengland.org.uk/images-books/archive/collections/aerial-photos/>

Just to whet your appetite, here's an aerial photo of Market Harborough taken in 1926. Coventry Road, the spire of St Dionysius's church and the Grammar School are all clearly visible.

<https://historicengland.org.uk/images-books/archive/collections/aerial-photos/record/EPWO14953>

### **Architecture Group programme for 2022**

The programme for the rest of this year is shown below. As well as the meetings in the Methodist Church, I will be arranging some more guided architecture walks. Details of the walks will be circulated in due course.

26 April Barry Frenchman Shaws of Darwen: terracotta and faience in architecture

24 May Michael Milsom *A village in the Pas de Calais* & Judith Sampson *Building with flints* & Geoff Woods *Richard Rogers*

28 June Geoff Woods *The architectural heritage of Wetherspoon's Pubs*

26 July Colin Cohen *Albertopolis – What did the Victorians ever do for us?*

23 August Hilary Hunt *The Architecture of Empire*

27 September Dudley Brown *What colour is your house?*

25 October Roger Lewin *To be confirmed*

## Interesting facts –



*But which is not true?*

Monks Bros ran a successful removal business for over 60 years.

There are currently two Monks Stores in Market Harborough.

The Rev Awdry, creator of Thomas the Tank Engine, who often passed this store, was inspired by this advert to create a new friend for Thomas.

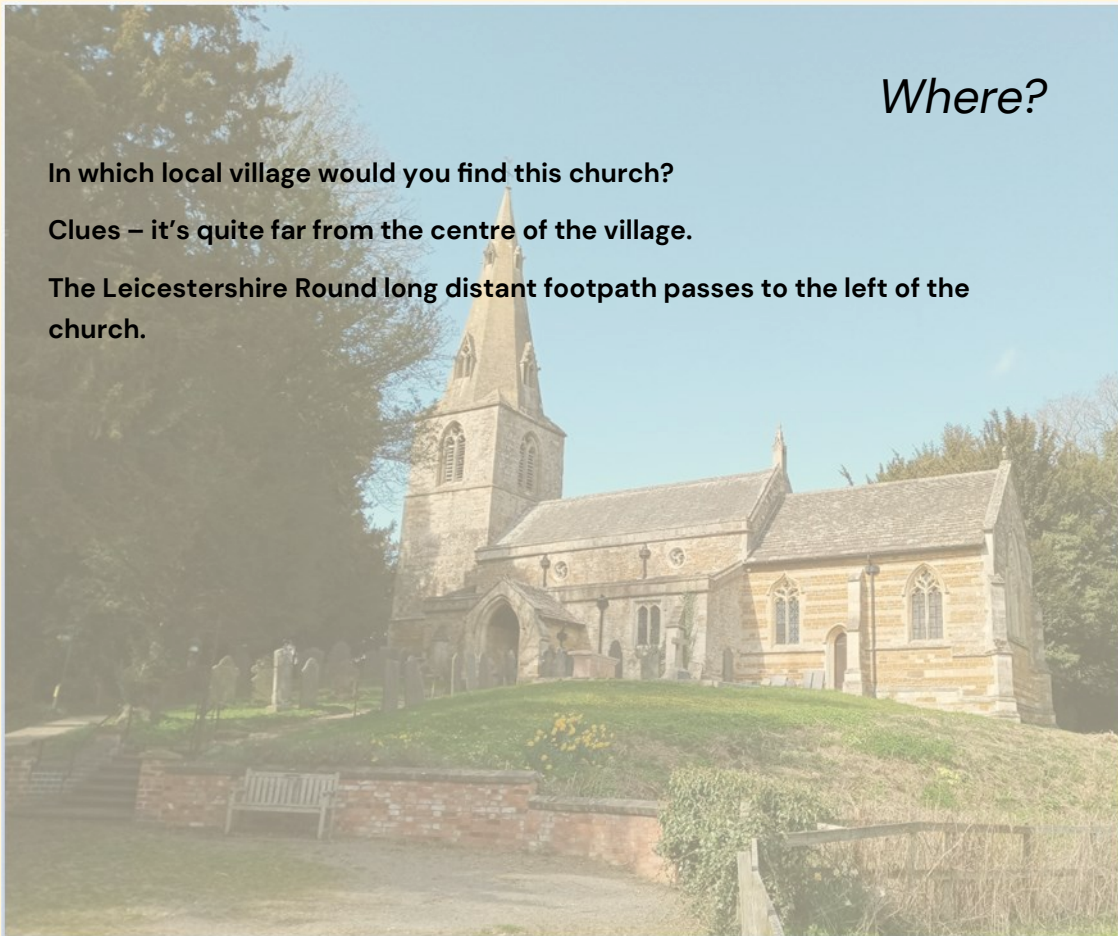
*Photo—John Hammond*

## Where?

In which local village would you find this church?

Clues – it's quite far from the centre of the village.

The Leicestershire Round long distant footpath passes to the left of the church.



Some people in the village are concerned about plans drawn up by the Justice Dept in London.

**Solutions on page 30**

## Petanque – Thursday 4<sup>th</sup> April – Report and **warning!**



Most of the hardy band of Petanqueurs (rhymes with plonkers) turned up at the cricket ground for a couple of hours of sport, despite fairly inclement conditions. However, at the end of the session, the organisers were contacted by local police who warned that the group may have been infiltrated. The character in question was none other than Jacques le Gitane. His classic Hustle trick consisted of introducing himself and saying that he had never actually played the game. After a few ends, he threw some winning shots, (Oh that was lucky!) and then a bit later, asking if anyone would 'like to make it more interesting? Maybe play for a few euros?'

The police added that Jacques often impersonated U3A trustees and in some cases, he had succeeded in taking various members' Winter Heating Allowance from unsuspecting players.

***You've been warned!***

### **STOP PRESS:-** Election results

The new committee was duly elected by the members at today's Special Meeting, 76 votes and also via the online voting form, 334. The total votes cast was 410 (45% of the membership). ***Thank you to all members who voted. The Committee.***

**Helen Salisbury, Chair.**

[chair@hwu3a.org.uk](mailto:chair@hwu3a.org.uk) 07837 410575

**Dave Martin, Secretary.**

[secretary@hwu3a.org.uk](mailto:secretary@hwu3a.org.uk) 01858 440530

**Andrew West, Treasurer**

[treasurer@hwu3a.org.uk](mailto:treasurer@hwu3a.org.uk) 07732 511572

**Ian Webb, Vice Chair**

**Membership Secretary.**

[membership@hwu3a.org.uk](mailto:membership@hwu3a.org.uk) 01858 440851

**Louise Elsome Group Coordinator.**

[groups@hwu3a.org.uk](mailto:groups@hwu3a.org.uk) 07740 572956

**Jack Horton, Publicity.**

[publicity@hwu3a.org.uk](mailto:publicity@hwu3a.org.uk) 07511 749462

**Kate Helm, Marketing and STARS Co-ordinator**

[marketing@hwu3a.org.uk](mailto:marketing@hwu3a.org.uk) 07817 735784

**Stuart Irons, Premises Coordinator**

[premises@hwu3a.org.uk](mailto:premises@hwu3a.org.uk) Tel: 01858 465287

**Liz Brett, New Members**

[new.members@hwu3a.org.uk](mailto:new.members@hwu3a.org.uk)

07907 631529

**Linda Reed, Shadowing role.**

# School's out!



It really felt like that on Friday 8th, when the steering committee met for the very last time. The team that oversaw the dissolution of the two former U3As and the creation of a thriving new one, celebrated with double rations of cake and a feeling of a job well done. Stella, Fiona and Eileen will now follow new interests.

For the rest, Term starts again, Friday 13th May.

Answers to photo quiz

Monks Bros did run a successful removal firm until the 1980s.

The second shop is on Goward Street.

Rev Awdry—Lovely idea but complete fantasy.



Saint Helens, GUMLEY

## Online Newsletter – Further comments on Survey Results.

**Survey Results.** Thank you to everyone who completed the survey about the newsletter. We would appear to be broadly on track but as the numbers supporting 'more of' and 'less of' would appear to cancel themselves out this is clearly a case of **'You can't please all of the people, all of the time'** More of this later.

Having completed our first edition, Jack and I have come to appreciate even more the effort that Stephen Joy, over many years, has put into producing newsletters for both the SLu3a and Hwu3a. His attention to detail and the ability to produce a 12 page or 16 page newsletter – there is no in between option – are truly remarkable.

We would also like to state that the printed version is, and always will be, the 'flagship' when publishing the HWu3a newsletter. It is also, as the title suggests, where news reports from the committee and group leaders are to be found. We also see the printed Newsletter as a valuable tool in our attempt to encourage new members to join HWu3a.

Some people asked for reports from all groups. This It would be physically impossible (bearing in mind the number of groups (70+)) **However, many group leaders do post information and news on the Website.**

If you feel that there are too many articles accredited to J.H or D.M, we agree. *And we all know what can be done about that.* We wanted to demonstrate just what might work successfully and encourage contributors to 'have a go'.

So returning to **'You can't please all of the people, all of the time'**, with a wide range of reports, articles and features, we hope that **'everyone will find at least one thing that interests them,'** even inspire them! **LEARN, LAUGH, LIVE!**

*Dave Martin. Jack Horton. Newsletter editing team. **We are currently recruiting!***

**COPY DEADLINE DATES – Printed version Tuesday 26th April**

**Online version Friday May 6th—If you have a contribution which you would like to see in the online version, please indicate.**

**[newsletter@hwu3a.org.uk](mailto:newsletter@hwu3a.org.uk)**

**So, what's to come? ...**

Hopefully, lots more news, articles and PHOTOS please.

Maybe, some April showers, cricket, and lots of gardening.

# **Blooming Marvellous**

