

Greville Smyth Park **IMPROVEMENT PLAN**



2010 - 2015

January 2010



Contents

1	Executive Summary	page 5
	<ul style="list-style-type: none">○ Origins of Plan○ Consultation○ List of Illustrative Plans	
2	Background	page 6
	<ul style="list-style-type: none">○ History and Description of Site○ Purpose of the Improvement Plan○ Policy Context○ Links with other Projects	
3	Review and Assessment	page 18
	<ul style="list-style-type: none">○ Analysis of Existing - Quality, Use and Issues○ Issues to be Addressed	
4	Consultation	page 25
5	Improvement Plan Proposals	page 28
	<ul style="list-style-type: none">1 New Pavilion Building2 Amphitheater, Performance Space, informal Play3 Wetland area, younger persons BMX features4 Entrance Features and Park Boundaries5 Horticulture6 Water Fountain7 Pedestrian Avenue<ul style="list-style-type: none">7a. Trees General8 View Points9 Connectivity10 Bus Stop Improvements	
	Other Improvements <ul style="list-style-type: none">○ Lighting○ Trim Trail○ Wildlife and Ecology○ Tennis Courts and Bowling Green○ Public Art	
6	Funding and Monitoring	page 37
7	Management and Maintenance	page 38
8	Appendices	page
	A. Summary of Costs	
	B. Programme of Implementation	

List of Illustrative Plans

The plans included in this document are:

- Page 4 - Site Location Plan**
- Page 27 - Suggested Improvements to Park**
- Page 30 - Proposed New Pavilion Plan**
- Page 39 - Historic Plan Overlays**
- Page 40 - Historic Features Overlay**
- Page 41 - Footpath network proposals**
- Page 42 - Amphitheatre proposals**
- Page 43 - Area under Clift House Road Proposals**
- Page 44 - Proposed Tree Avenue**



Greville Smyth Park - Location Plan:

Acknowledgements

The Greville Smyth Improvement Plan has been prepared by a partnership of Bristol City Council and the Friends of Greville Smyth (FrOGS). FrOGS have been the instigators of the plan, having been active for some time in defining and implementing improvements, funding events and increasing both the use of and interest in the park. They have both organised and responded to public consultation events which have helped to finalise the improvements proposed in this plan. FrOGS and the local community have played an important role in developing proposals for Greville Smyth for which their hard work is greatly appreciated.

Many other organisations, groups and individuals have played a part in the production of this document including local schools, churches, Avon and Somerset Police and the local community, many of whom submitted informative and constructive comments about how they would like to see the park improved.

1 Executive Summary

Origins of the Plan

' a measure of a city's greatness is to be found in the quality of its public spaces, its parks and squares.'

John Ruskin

The need for an improvement plan for Greville Smyth evolved through the work of the local community parks group, Friends of Greville Smyth (FrOGS): local residents of all ages and interests who have worked with the Community park manager since 2003 to improve the park for everyone.

During this time FrOGS has raised nearly £100,000 towards benches, tree planting, bed planting and significant improvements to children's play in the park. They have run many well-attended community park events. Recognising young people to be key users of the space and representatives of the future of the park itself, FrOGS has consulted them at all stages, involving them where possible, and raised funds specifically for improved facilities and activities for them, including some exciting arts projects run by youth/arts workers over several summers. Throughout all of this time, FrOGS has worked to a community-led strategic plan for the park and has developed good partnerships with the local police, schools, church and other organisation.

In 2007, Bristol City Council began working with FrOGS to develop a joint improvement plan for Greville Smyth Park, in recognition of its significance to the history and development of Bristol, and in line with its role within the Parks and Green Spaces Strategy adopted by the Council in 2008. An improvement plan is required to coordinate any proposals for investment in the park, to establish priorities and to ensure a consistent and comprehensive approach to ongoing improvements and maintenance which contributes to an over-arching vision for this valuable open space now and into the future. The plan will ensure that funding when it becomes available is directed towards works which will lead to the fulfillment of that vision.

This document aims to set out how Greville Smyth Park will be improved, managed and maintained over the next five years and into the future.

Consultation

Consultation on the future of Greville Smyth Park was initiated by FrOGS in 2003 when the group raised funding to purchase new playground equipment. They also undertook a survey of park users, noting their concerns and their aspirations for the Park. These were pulled together in a community improvement plan which was to be used to effectively lobby the council for more resources for the park.

In February 2007 it was recognised that the pavilion, in its existing configuration, was not likely to be brought back into effective use. FrOGS had already started to gather views from park users and to look for funding to carry out a feasibility study. The city council was also keen for the feasibility study to go ahead, in order to assess options for its refurbishment and/or replacement to better serve current and future park users, both for sport, recreation, leisure and community activity. Bristol City Council then funded and managed the process, alongside representatives from FrOGS. The results of the feasibility study on the pavilion proposal together with the results of consultation on wider parks improvements are discussed in Section 5.

Through the feasibility study, and the subsequent preparation of the improvement plan, a number of specific public and stakeholder consultations have been undertaken. Between March and April 2008 3,000 leaflets were distributed illustrating the improvement plan proposals and asking local residents and stakeholders to respond with their priorities, support, and/or rejection of these proposals. This leafleting was supported by meetings with specific user groups, and a series of workshops with students from Ashton Gate primary school and Ashton Park Secondary School. In total, over 500 questionnaires were completed across a range of consultation processes, and over 140 young people participated in workshop sessions.

2 Background

History and Description of Site

History

In spite of Bristol's dense urban development, the city was slow in the creation of local public parks compared to its northern city rivals, where park development in the 19th century was fuelled by industrial wealth and urban expansion. Between 1174, when Brandon Hill was granted to the City Corporation, and the mid 1800's, Bristol still only had 6 public open spaces available for the health and recreation of its citizens. In the 1850's Bristol was the third most unhealthy city in England. It took considerable campaigning on the part of the ordinary citizens, supported by the local Press to get the town council to take active steps to create public parks.

After much delay and debate about the city's approach to the provision of public parks, the city finally accepted the gift of 21 ½ acres of land by the river in Bedminster from Sir John Greville Smyth which became 'The People's Park Bedminster'. This kicked off the acquisition of land for local parks across the city, with St. Matthias, Redland Grove, Mina Road Park and Eastville Park to follow. Most of Bristol's parks were acquired over the next 10 - 15 years.



Greville Smyth Park, as newly laid out in the early 1900s.

Source: *Historic Public Parks* by David Lambert

Development of the park was slow - features being added gradually over the next 30 years - and from the outset the new Bedminster park was under threat.



The Ordnance Survey of 1918 showing the park already encroached upon by new roads.

Source: *Historic Public Parks* by David Lambert

Of the original 21 acres gifted, some was later taken for road construction and housing development. The remaining land has been left with a legacy of disconnection - of the park from the river, separation of open space sites by roads, parts of the park located under flyovers, and a maze of pedestrian and cycle routes and underpasses leading into and out of the park. Many of the original features have been removed, such as the open air swimming pool, iron railings and the fountain at the main entrance. The first bowls clubhouse – a Victorian wooden structure - was replaced by a 1930's clubhouse and football changing rooms – a building now in severe decline. Years of decline in park investment for maintenance had resulted in broken benches not being repaired or replaced, horticultural beds left unplanted, and footpaths in need of repair.

The park, however, still has a significant landscape structure and features which provide a strong foundation for improvement. The deterioration of park features and buildings is now well on the way to being reversed through the dedicated engagement and lobbying of the local parks group, Friends of Greville Smyth (FrOGS).

Site Description

Greville Smyth Park is located just south west of the city centre, adjacent to the southern approach road to the floating harbour and the River Avon. The Park is on a major route into the city. The park in this location, complemented by the historic landscape of the nearby Ashton Court Estate, contributes to the image and reputation of Bristol as a green and leafy City.

It is bound on four sides by roads - Brunel Way to the west, Clift House Road to the north, Frayne Road to the east and Ashton Road to the south. The park is located very close to the Avon River and the New Cut, giving access to the River Avon Cycle Path and walks, however the surrounding road configuration makes such access both difficult and confusing. The topography, which gives the park its special character, includes a level area of river flood plain to the west, rising up to a higher plateau and small hill top called Prospect Point. This gives expansive views across the Portishead to Bristol Railway line of the open landscape of historic Ashton Court, and of the Clifton Suspension Bridge.

Greville Smyth is a large traditional Victorian Park with lots of facilities, fine views and wide open grassy areas. The surrounding roads and footpaths enable level access to all parts of the park, while internal footpaths offer a variety of routes from upper to lower parks of the park. Not all routes are suitable for those with mobility problems, whoever the choice of routes means all parts of the Park are accessible to everyone.

There are a number of distinct landscape features which provide diversity, visual interest through changes of view and variety in walking routes through the park. The lower level is laid to recreational grassland. There is a footpath that runs from north to south across this space, and there are three football pitches marked out in the area closest to Ashton Road.

There are a number of mature trees which provide striking visual amenity. There are around 375 trees in the park representing 45 different species - some are unusual such as the Indian Bean Tree, Himalayan Cedar and Weeping ashes that date back to the 1880s.

The Bristol Parks natural environment team have instituted a proactive inspection and maintenance regime, which includes for a replanting programme where trees have had to be removed upon reaching the end of their life expectancy or where they have become dangerous. Where trees have had to be taken down, FrOGS requested that many of the huge logs should remain in the park - retained as features, or used for play, seating and wildlife. In partnership with the Woodland Trust, the Tree Council and the Quartet Community Foundation, FrOGS have and continue to raise money for significant new tree planting. Tree Planting is usually undertaken as a community event.



Community tree planting

The western boundary of the park, adjacent to the footpath on Brunel Way is screened from the road by heavy mature deciduous shrubs and trees. Unfortunately, this road carries a heavy volume of traffic which creates a constant noise intrusion into the park - this is particularly noticeable from the upper plateau.

Towards the middle of the park, adjacent to the footpath, is an access to a system of underground drainage runs which collect water to prevent flooding of the pedestrian routes under Brunel Way. The only evidence of these workings is an ugly metal switch box projecting above the surface. As it would not be economic to place this underground, there is an opportunity to provide interpretation of this feature for the purpose information and interest to park users.

Beyond this is a teen shelter constructed of round timbers with carved wooden benches, which local young people helped to design and build. This was part of a youth/arts project organised by FrOGS and carried out with funds raised by Bristol South Rotary Club and FrOGS.



The teen shelter, which was built by local young people

Beyond the shelter, the main path heads for the top north west corner of the park, under the Clift House Road flyover. The path then loses purpose as it leads up onto Brunel Road with no clear indication of where it is going or how to move from the park to the open space and riverside walks beyond.

The Children's playground is located towards the centre of the park at the transition between the lower and upper plateaus. There is a play area with play equipment for very little children at one end and for older children's play at the other. This area was equipped through funding raised by FrOGS and designed with the engagement of future users. In the middle of these is a section of play equipment for children aged roughly 4 - 11, which, while older, was also supplied through funds raised by a previous local community group working for the park. The areas of play equipment are set within a large space of grass and trees, enclosed by railings to keep the area dog free.

The Upper Plateau is the other formal sports hub of the site containing the bowling green

and two tennis courts, recently resurfaced. This is also the location of the current sports pavilion which contains changing rooms and showers, a park keepers office and mess facility, and the Bowls Clubhouse which includes changing rooms, toilets, a small kitchen area and a meeting room.

Of the facilities within the existing pavilion, only the Bowls club rooms are in full active use and is internally well-maintained by the Bowls clubs. The other facilities are old and in poor condition and generally unfit for purpose, although they are still used intermittently. The building itself has suffered vandalism, graffiti and intrusion, resulting in oppressive defensive measures such as barbed wire to prevent roof access by youngsters.

The rest of the upper plateau is laid out in a series of smaller spaces and walks which create 'rooms', often used as informal class rooms or small activity areas. The upper plateau is the most wildlife-friendly area of the park with mature trees, shrubs and undergrowth needed to sustain a species rich and bio-diverse environment.

Adjacent to Ashton Road, there is a wildflower meadow, recently planted out by FrOGS with the involvement of local primary school children. There are nesting boxes in many of the mature trees in this area. Wildlife observation records kept by a FrOGS member indicate a good population of birds, small mammals and insects present in this area of the park.

Uses and Role of the Park

Greville Smyth Park is a very popular and extremely well used traditional park. It has a large number of different users, individual, families and social groups, who are involved in a range of different activities in the park from organised sport to informal recreation, children's play to community events.

Informal Recreation: walking, dog walking, jogging, buggy pushing, skateboarding, sitting, picnicking, socialising, kicking a ball about, kite flying, frisbee, informal cycling, general exercising, kick-about etc,

Formal Recreation: sports are played in Greville Smyth Park on a regular basis including football, tennis and bowls. A number of organised sports bodies utilise the facilities weekly, and their presence in the park provides a route to involvement in active sport for local people.

FOOTBALL

There are three football pitches on the lower Plateau in Greville Smyth Park which are played on both on a seasonal basis, and used for training and 'friendlies' out of season. Two pitches are of average quality standard (PQA - pitch quality assessment of 56) and one pitch is below average (PQA 48) (as defined by the FA quality assessment criteria).

Two teams use the site regularly - these are Ashton Boys FC and Ashton Old Boys FC. The pitches are used on Saturday afternoon by the adult teams and Sunday morning and afternoon by junior teams. They are also used on Saturdays for casual play with some training

The new maintenance contract has demonstrated an increase in quality of mowing, marking and season repair/refresh of the sports turf. There are a couple of areas of the

pitch which flood during heavy rain. A container has recently been put on site near the football pitches for storage of nets and equipment, in agreement with the Community Parks Manager.

The Ashton Boys Football Club has recently received Community Club Award status. They are the biggest club in the West Country using a number of sites and facilities across the Avon area. They have 35 sides this season, playing everything from mini football (under 11's mixed gender) to a girls' section with 7 teams. There is a new women's side starting in September. Greville Smyth is principally used for the juniors.

The Football Association is interested in supporting the clubs on this site and are aware of the state of current facilities such as the changing room and pavilion. The club itself are very interested in looking for a social facility which they could use as a home base, and have resources to contribute to the development and management of facilities. The business plan for the pavilion will explore this further.

TENNIS

There is an active tennis club at Greville Smyth which has a self-management agreement with the council regarding use of the two tennis courts. The club has been running for approximately 5 years, and currently has 128 members. The club has a coaching programme in development, and pay and play coaching for all ages is available Saturday mornings and Tuesday evenings. Evening Adult sessions are run on Mondays and Thursdays. With social play on Saturday afternoons and fun match play on Sunday mornings.

These courts have been recently refurbished to a high standard, with the potential for floodlighting in the future should there be a demonstrable demand, and identified funding. This would be subject to planning permission. Because there are only two courts on the site, the site is unlikely to become a competition hub site. However, improvements to the pavilion which would include changing and social facilities will enhance the attraction of tennis and enable the club to reach a wider audience.

BOWLS

The bowls green on Greville Smyth dates back to the early 1900's. There are two clubs currently playing on the green - the Bristol South Bowls Club and the Greville Smyth Bowls Club. Total membership currently stands at 27 and 38 members. The green is managed and maintained by the clubs, as are their clubrooms within the pavilion building.

RUNNING

The Park is the start and end point for a number of 10K runs by various running clubs at least once a month using the GWR towpath under the suspension bridge.

TRAFFIC FREE ROUTE

Greville Smyth Park provides traffic free routes for pedestrians and cyclists and is often used as a route to school, to work and into Bristol.

COMMUNITY EVENTS

Events are held throughout the year, including many organised by FrOGS. These include: a dog show, singing in the park, Art in the Park, Young People's activities day, Easter Egg Hunt, Cafe in the Park and the annual FrOGS Lazy Sunday event.

Purpose of the Improvement Plan

The improvement plan will guide future development and improvements to the park over the next 5 years from 2008 - 2013 and will also be used as a bidding document in attempting to secure funding for the improvements. The plan will ensure that a coordinated approach is taken to developing the park and that improvements are made according to agreed priorities.

Improvements to the park will necessitate additional management and maintenance to ensure this investment is protected and sustained into the future. This document considers maintenance needs in the future and how new and extended facilities will be managed.

Green Flag

It is not intended to submit Greville Smyth Park for Green Flag status in the immediate future, however, it is intended that the park will improve sufficiently over the lifetime of this plan to an extent that it will approach Green Flag status. The Green Flag Award is the national standard for parks and green spaces in England and Wales. The award recognises and awards the best green spaces in the country whilst encouraging others to achieve the same high environmental standards. Bristol currently has four parks with Green Flag Awards, and is seeking to achieve this for three others by June 2010. Future Green Flag applications will be considered on the basis of the city's ability to achieve and maintain these within expected budgets.

Bristol Parks has an internal quality monitoring system called Getting the Measure of Parks, which uses the Green Flag criteria to assess how well our parks are doing against the national standard. Traditional parks will be assessed under this system on a regular 3 - yearly cycle. Currently the score for Greville Smyth stands at 2.4 out of a score of 4 as assessed by an independent parks quality assessor.

Vision

The Vision for Greville Smyth Park is that it will confirm its position as one of the most important local parks in the Bedminster/Southville area and become a park that enhances the quality of life for local people, serving community and recreational needs and enhancing the urban environment, including by providing a Breathing Place for nature.¹

¹ Reference 'Do One Thing for Nature' initiative under BBC's Breathing Places
<http://www.bbc.co.uk/breathingplaces/create/>

Policy Context

The Corporate Plan sets out what, within available resources, Bristol City Council plan to achieve over the next three years towards the delivery of the longer-term vision for the city.

There are four Our City themes which are priorities that will guide all our activity. These are:

- Our City: Ambitious Together – Going for growth that all can contribute to and benefit from.
- Our City: Making a Difference – Achieving lasting improvements in the key services we provide that are not currently up to standard.
 - for efficient, responsive services – across all the services that we deliver, in particular for services where we need to make the greatest improvement
 - for children and young people
 - for older people and disabled people
- Our City: Safer and Healthier – Ensuring that citizens feel safe from crime and anti-social behaviour and can enjoy a healthy lifestyle.
- Our City: Better Neighbourhoods – Ensuring that Bristol residents experience significant change in the physical quality of their neighbourhoods and have opportunities to shape improvements at this level.



Community tree planting at the park

Parks and Green Space Strategy

The Greville Smyth Park Improvement Plan has been developed in accordance with the objectives set out in the Parks and Green Space Strategy (PGSS). The PGSS creates the framework for a 20 year investment programme for the future provision of green space in Bristol and the facilities and services that should be provided.

The vision of the Parks and Green Space Strategy is to achieve:

'a City with good quality, attractive, enjoyable and accessible green spaces which meet the diverse needs of all Bristol citizens and visitors.'

Greville Smyth Park is a formal green space and as such will be improved in line with the following key policies for formal green spaces:

- FG1 Ensure that there is a good quality traditional park within easy reach of home offering a range of facilities.
- FG2 Introduce park keepers into the main traditional parks across the city.
- FG3 Restore, enhance and safeguard key historic estates and parks, respecting historical features whilst responding to modern day needs.
- FG4 Enhance entry points and boundaries to improve the welcome to the space and reinforce the designed-landscape within.
- FG5 Safeguard a variety of designed landscapes which have arisen from the historic development of the city to enhance the variety of experience available.
- FG6 Invest in horticultural training as a significant aspect of investment in raising horticultural standards.
- FG7 Provide highly visual perennial planting schemes in key formal green spaces.
- FG8 Restore and enhance formal squares to act as a focal point for local residents and business communities.

The play facilities in the Park will be developed in line with the following policies relating to children and young people.

- CY1 Provide a diverse range of children's play spaces from fixed equipment to natural play spaces, each with seating and grass run-around space.
- CY2 Provide diverse, exciting and challenging spaces for young people, including equipment, wheels parks and shelters.
- CY3 Maintain and enhance three high quality major play spaces which attract citywide and regional users.
- CY4 Enhance the wider park environment for play and work with children and young people to explore and use green spaces positively.

Greville Smyth Park provides both formal recreational facilities (bowling green, tennis courts) and informal recreational facilities for the local community. These formal sports facilities will be developed in accordance with the following PGSS policies.

- AS1 The quality of experience and carrying capacity of a playing pitch will be enhanced by improving changing facilities, pavilions and pitch quality.
- AS2 A smaller number of locations will provide tennis courts - but these will have multiple courts managed by either a club or someone to take bookings.
- AS3 Review and rationalisation of bowling provision.
- AS4 Support clubs and individuals by providing the right facilities and encourage participation in outdoor sport.
- AS5 Enhance the wider park environment for informal sport.

The following land management policies contained in the PGSS will also inform the development of Greville Smyth Park.

- LM3 Restore and develop park buildings for a range of alternative uses.
- LM4 Provide good quality accessible toilets at main traditional parks and sports grounds, meeting the British Toilet Association Standard.
- LM5 Improve access to green space for a wider range of people by creating dog free spaces across the city whilst ensuring that dog walkers retain a varied choice of green space to visit.
- LM6 Develop the role of on-site parks staff and dog wardens to tackle problems of dogs' mess and uncontrolled dogs through education, encouragement and enforcement.
- LM8 Build into our green space planning measures to adapt to, and mitigate, the effects of climate change: including trees for shade, drought resistant planting and water storage.
- LM9 Adopt sustainability targets in the management of Bristol's parks and green spaces.
- LM10 Manage and plant more trees to improve distribution across the city, and advocate the importance of trees in adapting to climate change.
- LM11 Establish greater connection with transport planning to improve access, entrances and pathways to and within sites for different users.
- LM12 Improve the quality of green corridors, riverside routes and cycle/walkways through the city for recreation, biodiversity and commuting.

Links with Other Projects

Sustainable Southville project
Greater Bedminster Community Partnership
Cycling City/ Sustrans Connect 2
Bristol Parks Forum

3 Review and Assessment

Analysis of Existing - Quality, Use and Issues

Quality Assessment

A quality assessment was carried out on Greville Smyth Park in 2004 by the Parks Service using the 'Getting the Measure of Parks' methodology developed for the Parks and green Space Strategy. The park was measure again in 2008 by an independent assessor, using the same methodology. The purpose was to assess the current state of the park and its potential for improvement.

In 2004 the parks quality assessment identified that although the setting and containment of the site was very good there were a number of areas that could be improved upon. The areas/facilities identified as being in most need of improvement are:

- the condition and maintenance of entrances
- the condition and maintenance of internal boundaries
- the maintenance of paths and hard surfaces
- the maintenance of signs and interpretation
- the condition and maintenance of site furniture
- the condition and maintenance of horticulture
- the condition and management of woodland
- the condition of children's play equipment
- the design and use of sports facilities and changing rooms

Between 2004 and 2008 a number of improvements to the park have been undertaken, and these have been reflected in the quality score. These improvements include, new children's playground equipment, repair and replacement of benches, new planting of horticultural beds and the creation of a wildflower meadow. In addition, the presence of an on-site park keeper means that the maintenance of the park, including the children's playground, has improved. Parkland trees have received extensive maintenance, with both removal of damaged or dangerous trees and the planting of new replacements to enhance the variety and diversity and to protect against the spread of disease. Many of these improvements were at the instigation of the Friends of Greville Smyth, using funding raised by and resources organised by the group.

The current quality assessment still highlights areas for concern.

Areas where there is the widest gap between existing condition and potential within the park include (survey undertaken in June 2008):

1. Condition and maintenance of park entrances (including signage and information, particularly for the disabled)
2. Condition of internal boundaries including railings and fencing
3. Condition and maintenance of Park furniture

4. Condition of Sports Pavilion/Park Buildings
5. Horticulture condition and maintenance (weeds, bindweed and litter)
6. Woodland Maintenance (perimeter planting)
7. Children's playground (teenage play area not inclusive, play bark needs topping up and perimeter posts need repair, some additional play value required)
8. 5-a-side pitch needs reinstatement



The condition of internal boundaries needs some improvement

While the quality scoring tells us something about the overall condition and maintenance of the park, it isn't able to tell us about the way the park is used and the direct concerns of park users. A number of surveys have been undertaken of general park user concerns for the Parks and Green Spaces Strategy, and by FrOGS specifically for Greville Smyth which have gathered extensive information about how local people feel about and use the park, and this information has been used to identify the issues set out below.

Issues to be Addressed

Consultation undertaken for the Parks and Green Space Strategy has found that peoples' priorities include keeping spaces clean and free of litter and dog mess and preventing vandalism in addition in parks, providing a park keeper, toilets and a range of facilities.

Litter

Littering is a serious problem within parks and green spaces and can detract hugely from

the quality of a space. This problem can be worse during summer months when larger numbers of people use the park particularly on sunny days. Reducing excess litter requires a multi-faceted approach involving education, sufficient provision of bins, sufficient emptying of bins and raising awareness of potential prosecution. While fly-tipping is also becoming a greater problem in parks, it does not seem to be a problem in Greville Smyth. In general, rubbish will usually be removed from site as quickly as possible, and the presence of a Community Park Keeper has been able to keep the litter problem under control. The location and quantity of rubbish bins (existing and proposed) are identified on the Improvement Plan.

Dog Fouling and Uncontrolled Dogs

Findings from research and consultation has identified a significant concern about the level of dog mess and dogs being walked off a lead. These concerns are raised particularly by disabled people, children and parents/carers with young children.

Although poop scoop campaigns such as recent ones in Bedminster and Southville have improved the situation, education alone has not delivered a suitable solution. Policies within the Parks and Green Space Strategy aim to retain adequate and legitimate access for dog owners, but to deal decisively with the problem. It is proposed that provision of some dog free areas along with an increased number of dual use bins in appropriate locations and ongoing education and enforcement by park keepers will help to reduce this problem. At the moment the area around the Children's Playground, currently fenced, is allocated as a dog-free area.

It is recognised that most dog owners are fully in control of their dogs but the degree to which this problem (created by a significant minority) affects visitors shouldn't be underestimated.

Anti Social Behaviour

From time to time there are incidents of anti-social behaviour in Greville Smyth Park. Once reported, the more serious incidents are logged and dealt with by the Police.

There are generally more incidents of anti-social behaviour reported in the summer than at any other time. Many incidents are linked to alcohol although others are simply acts of vandalism.

Since 2003, FrOGS has done a great deal of work around the anti-social behaviour that can take place amongst some of the young people in the park, recognising that some (though certainly not all) of this has its roots in the lack of things to do and a lack of proper engagement with young people in the park. The group has raised money for professional youth workers to go into the park on Friday nights to find out what young people want and it has raised funds to improve facilities and activities for them. There has been a small decrease in the number of incidents being reported in the last 12 months, and a large decrease in problems experienced by the Bowls club over the last few years, since these more proactive, positive measures were put in place.

It should be noted that dog fouling, litter and other activities are also anti-social behaviour - and it is not just some young people who are responsible for all incidents in the park.

The location of the Park, the busy nature of the surrounding roads, and the presence of

residential and business users along the main Ashton Road Frontage and Frayne Road provide the park with a high level of passive surveillance. Its use as a through route to school, college and work also provide safety and security to park users. The presence of the park keeper during daylight hours acts as a deterrent for anti social behaviour but many incidents occur during the evening or at night time. Also, the park keeper's hours finish before 4pm when the schools come out. Anti social behaviour needs to be addressed both through physical measures and better surveillance but ultimately it will take a multi agency approach to reduce anti social behaviour in the park. Bristol Parks, Children and Young People's Services, Extended Schools Partnership, the police, anti social behaviour teams and experts from across Bristol City Council now focus on the issues of anti-social behaviour in parks and green spaces. Communication between organisations and teams has improved significantly. This has enabled a more coordinated approach to tackling anti-social behaviour. Incidents need to be reported promptly to the Community Park Officer so that they can be brought to the attention of the appropriate agencies.

Vandalism

There are few incidences of vandalism in Greville Smyth Park. The Park Pavilion building has been subject to the most sustained vandalism in the form of graffiti, break-in and access to the roof area. Anti-climbing measures have had to be employed to prevent damage and danger those who are undertaking this activity, but they have not been entirely successful. Research shows that if a building looks neglected or damaged, it is far more susceptible to continued vandalism - the Broken Window syndrome. The Park Pavilion building is one of the last bits of the park to look very neglected and unused, hence the feasibility study and promotion of desired improvements/redevelopment of the pavilion.



The pavilion building has suffered from sustained vandalism

Both the tennis courts and the bowling green have suffered from inappropriate access and use which has caused some damage. The tennis courts have been used for cycling and the bowling green for football. This may be an indicator of the need for the development of more appropriate spaces in the park for this type of activity. Although there is currently plenty of space for kick about, there is no dedicated space for creative cycling.

There are no current locations for legitimate graffiti in the Park, although there are plans to undertake some art projects using the columns of the overpass at the north east end of the park (see master plan). This could be undertaken using local artists working with young

people, and provide an opportunity for local people to practice graffiti art in an acceptable way. This also helps to give local artists ownership of specific areas and reduce the risk of graffiti as vandalism.



Other buildings in the park have suffered from graffiti damage

Park Keeper

Greville Smyth has had a dedicated park keeper since July 2008. This is a service that has proved very successful and it was evident from the latest consultation results that local people think the park keeper is an essential on-site presence. Having a dedicated park keeper on site also means that he/she can react quickly to safety or maintenance issues.

Toilets

The park toilets within the Pavilion are in a very poor condition and generally not open to the public. There are public toilets on Ashton Road at the south-west entrance to the park. These have recently been refurbished and have a part-time attendant. The Parks group has lobbied for some changes to be made to these toilets, as currently the entrances are on Ashton Road, with none on the Park side of the building, and the attendant has no view into the park. The changes could enable parents to feel more comfortable about allowing their children to use the toilets on their own, and to provide an additional level of surveillance into the park. Design work and costings have been undertaken to show how the toilets can be modified to achieve this (see Appendix 4).

The Parks and Green Space Strategy recognises that the provision of clean and accessible toilet facilities is a top priority in a park of this size. The further improved provision of public toilets in Greville Smyth Park is linked to the redevelopment of the pavilion building.

Access

Greville Smyth Park has 6 main entrances. An access audit of the park was undertaken in May 2009. This was a visual audit of all paths, entrances and signage in terms of gradients, accessibility, legibility, ease of use and visual information. The full audit can be viewed in Appendix 3. The recommendations made by this audit have been incorporated

in the improvement plan. The general conclusions of the audit were that there is a reasonable level of access in Greville Smyth Park, and that there is an extensive network of paths, most of which are in good condition. The main routes through the park are open and wide, and contribute towards making the park feel safe. While there are a number of sloping paths between the lower and upper plateaus, there were sufficient choices of route that those less able users would still be able to access all parts of the park. Bristol Parks will seek to maintain an effective network of well-surfaced and well maintained paths through the park, with repairs, resurfacing and path sweeping as necessary.

The main opportunities for improving access lay in improved signage at entrances, and path junctions, and providing better quality and accessible benches.

The audit confirmed that the opportunity to redevelop the pavilion will provide an accessible facility for sport and community activity.

Currently there are no plans to create car parking within the park. There are a small number of parking spaces which are utilised by the Bowls Club for those with accessibility problems only, and there is no intention to remove this. However, public consultation strongly rejected any proposals for additional car parking provision. The Park is well served by roads on which public open car parking is available, although at times of Football matches or other events at Ashton Gate, all available public car parking is utilised by the football audience. This situation is likely to be relieved when the Football stadium moves site in the next few years.



A main entrance to the park at X

Noise

The park suffers from noise generated by traffic on the Brunel Way. As a Main access road into the city from the south, it is unlikely that there will be measures put in place to reduce volumes of traffic which would significantly impact on noise in the park.

Currently the park is separated from the roadway by dense shrub and tree planting, which, acts as a visual barrier - both for those in the park looking out, but also blocks view into the park from passers-by. This planting does little to reduce the sound attenuation, however.

The Park group has requested that noise barriers be investigated, with an understanding that, while the cost may be prohibitive at the moment, there may be an opportunity in the future, under some relevant funding stream, to implement such an improvement.

4 Consultation

Process and Results

During the autumn of 2005, FROGS undertook a survey of park users. The findings from these events contributed to the initial improvement plan for the park which was developed by the group in May 2007.

In anticipation of the potential receipt of a significant sum of Section 106 funding arising from an adjacent development, Bristol Parks employed a consultant to undertake a feasibility study on options for the repair, refurbishment or redevelopment of the Park Pavilion building in Greville Smyth. This provided the opportunity to combine the processes of looking at the future of the park buildings and preparing a whole park improvement plan, based on the findings ground work of the Friends of Greville Smyth.

From August 2007 through to March 2008, a series of public meetings, workshops and exhibitions in the park were held to gather opinion about the proposals arising from the feasibility study and the proposed improvements and priorities for the Park. Three thousand consultation leaflets were produced and distributed door to door, and in public venues in the Bedminster/Southville/Hotwells area which set out the preferred Option of redevelopment of the pavilion building, together with 10 further proposed park enhancements, with a free post return questionnaire to collect responses. The questionnaire was also available on the Bristol City Council website. A copy of the leaflet, the questionnaire and a summary of the results are located at Appendix X.

Three specific workshops were held with Ashton Gate Primary School pupils (16 November 2007) and students from Ashton Park Secondary School (2 April 2008 and 1 May 2008). In addition, separate meetings were held with the Bowls Club and the Tennis Club to discuss the proposals. The feasibility and consultation process was directed by a project team made up of Bristol City Council, Batterham Matthews Design, BCC Landscape Design and Friends of Greville Smyth.

The top three park enhancements that received the highest response rates were:

1. Redevelopment of the Greville Smyth Park Pavilion
2. Create a wetland area under the Clift Road overpass, with challenging natural features for younger children's BMX riding. Meadow planting on the slopes and commissioned art work on the columns
3. Planting of Trees to create a pedestrian avenue

The order of priority identified from the returned questionnaires for the remaining proposals was:

4. Better access to Riverside walks and adjacent cycle trails through signage and route marking
5. Planting beds around main entrances and the park building(s) to create colour and seasonal change
6. Make park entrances more welcoming through signs, notice boards, artist - inspired gateway features.
7. Creation of a performance space/amphitheater adjacent to the playground, with the use of natural features to increase play value.

8. New park furniture, more seating in appropriate locations
9. Selective shrub clearance to create/reinstate views from high points such as Prospect Point, while retaining the special feel of the semi-enclosed spaces used for outdoor classroom and organised activity.
10. Artist designed sculptural fountain at the Ashton Road main entrance (to replace the original Victorian fountain.
11. Improve the bus stop in Ashton Road

A summary of the consultation findings can be found at Appendix 5. The proposed enhancements identified through the consultation are discussed in more detail below.

A further proposal was raised after the consultation results had been gathered. This was to consider including elements in the park which could be used as a Trim Trail circuit. The Friends group was very interested in this suggestion. In order to avoid the introduction of fixed pieces of physical fitness equipment which could cause an impression of clutter in a park of this size, Touchwood, a local firm specialising in creating bespoke structures and play equipment from wood, have been asked to look at how some of the in situ felled tree trunks could be modified to provide a series of fitness routes/activities which could be utilised in a 'trim trail' circuit in the park following existing paths and routes.

In addition to the specific improvement proposals arising from the consultation, the park will be subject to ongoing improvements related to refurbishment and extension of the footpath network around the park (see Plan 4) ; further new tree planting; new and better signage to provide users with information about the park, routes and linkages, events, history and wildlife; and ongoing monitoring and improvement of the quality of the wildflower meadow along Ashton Road.

Suggestions for Improvement

Proposal 9:
Better access to riverside walks and cycle trails through clear direction signage and route marking

Proposal 3:
Wetland area, including challenging features for BMX riding. Meadow planting on slopes and commissioned artwork on pillars

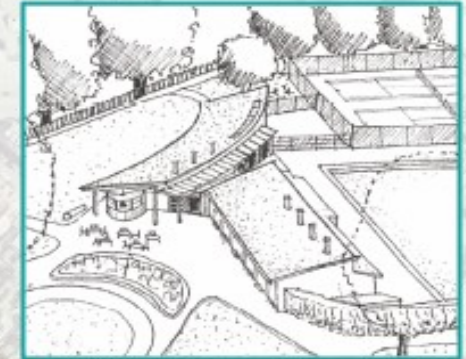


Sketch showing proposed wetland area

Proposal 7:
Existing footpath turned into a pedestrian avenue with formal tree planting, seating and interpretation, highlighting current and historic features of the park

- KEY:**
- Proposed trees
 - Proposed planting beds
 - Existing fixed play equipment area
 - Existing and proposed earth modelling
 - Proposed new footpath construction

This report is not a final design and is subject to the permission of the Bristol City Council. It is the property of the Bristol City Council and is not to be used for any other purpose without the prior written consent of the Bristol City Council.



Sketch showing birds eye view of proposed pavilion

Proposal 1:
Redevelop Greville Smyth Pavilion to include kiosk, community space and changing facilities for tennis, bowls and football

Proposal 2:
Performance space and informal play - natural amphitheatre with play features

Proposal 8:
Some shrub clearance to create/ reinstate views from high points (Prospect Point and seating areas on the hill) but retaining 'special feel' of an outdoor classroom for organised activities

Proposal 11:
Improved bus stop on Ashton Road

Proposal 5:
Planting beds around main entrances and building to create colour and seasonal change

Proposal 6:
Artist-designed sculptural water fountain at main Ashton Road entrance

Proposal 4:
Emphasising the Entrances to the Park, making them more welcoming through signage, artist inspired gateways or entrance gates/features

5 Improvement Plan Proposals

The following proposals for improvement works to Greville Smyth Park arise from consultations undertaken by FROGS in 2006/7, and the resulting draft Improvement Plan prepared by the Group in 2007. This was used as the basis to undertake a feasibility study on options for a new Park Pavilion building, to prepare more detailed proposals in line with the aspirations of Frogs, and to go out again to broad public consultation to gauge support and identify priorities.

1. New Park Pavilion

The current park building was constructed around 1900 to house showers and changing rooms for football, club rooms for the bowlers, an office/mess room for park staff. Over time the building has fallen into a poor state of repair, has suffered from vandalism, and the football and bowls facilities are not longer fit for purpose, in that they do not meet modern standards of access, accommodation or flexibility for use by clubs and individuals. There is currently no social or changing provision for those using the tennis courts.



The current pavilion building

The current building is still in use by the bowls clubs, who maintain the interior of their club facilities to a high standard, and by the park keeper for storage and mess facilities.

A feasibility study was undertaken to assess the aspirations of existing clubs users, park users and community groups and individuals for buildings/ facilities within the park to support and serve the needs of different user groups and to assess the cost of different responses to the needs identified.

Four options were considered:

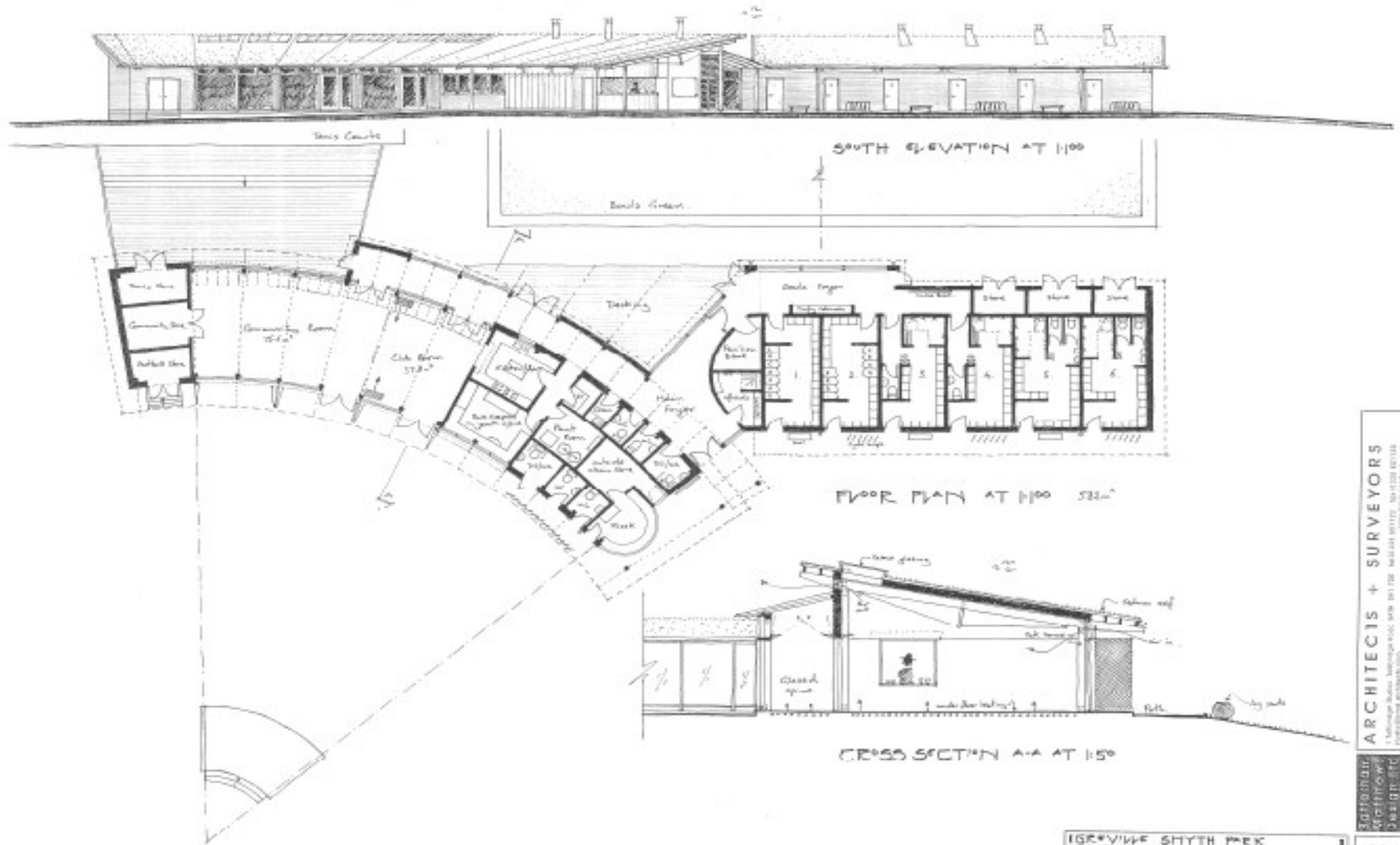
1. Refurbishment of the existing building.
2. Remodeling of the existing building with separate football changing facilities.
3. Remodeling and extension of the existing to include new football changing facilities.

4. New build facilities on the existing site.

These four options were developed to meet the brief for provision of changing rooms for football, bowls and tennis, social facilities - particularly for the bowlers, but which could also be used by other clubs and community groups, park keepers office, kiosk/cafe with outdoor seating area. The building proposals were required to meet the requirements of a low energy, low carbon building using sustainable materials and construction methods, which was innovative in design, but in keeping with the park and its location, robust and easy to maintain.

The full report on the feasibility study is available upon request at on the website at [/www.bristol.gov.uk/ccm/content/Environment-Planning/Parks-and-open-spaces/parks/greville-smyth-park.en](http://www.bristol.gov.uk/ccm/content/Environment-Planning/Parks-and-open-spaces/parks/greville-smyth-park.en)

Following consultation and a cost/value analysis, Option No. 4 was identified as being the best option to meet the needs of park users and deliver a versatile and flexible building which will enhance the user experience and increase opportunities for education, leisure and social activities in the park.



ARCHITECTS + SURVEYORS
 1 Malvern Road, Malvern VIC 3009
 Tel: 03 9499 1111 Fax: 03 9499 1112
 www.architects.com.au

Julian
 Goffin
 Design

IGERVILLE SMYTH PARK
 PROPOSED NEW PAVILION
 PLAN SECTION & ELEVATIONS
 1:100 A1/A2 1:50 A3/A4 1:50 A5/A6

1436
 22

A business plan which looks at how the building could be used and maintained will need to be prepared prior to any application for funding for development of the new facility.

Funding

The development of the new pavilion will be reliant on a matrix of funding being pulled together from a range of sources including grants from sporting bodies, e.g. the Football Foundation; contributions arising from adjacent development; Parks capital funding through the Parks and Green Spaces Strategy; sponsorship and potential commercial investment. This will take time to bring together.

2. Amphitheater, Performance Space, Informal Play

The area at the foot of the central steps, which is currently tarmac with a swing set on a rubberised surface, is an under used space in a prime location. This area could provide a feature which unites the upper and lower levels of the park, acting as a focal point for meeting and socialising, planned and impromptu performance, and an extension of the more formal play area.

The proposals here are to remove the swings when they come to the end of their effective life, and to create an amphitheater using natural features such as logs, rocks and grassy banks, a polished concrete 'performance stage' and landscape features which provide play value for children through balancing, climbing, jumping, chase and tag.

The swings themselves have always been a very important and much loved feature in the park. They are well used as a place for playing, socialising and chatting. FrOGS are keen to replace them with other swinging features elsewhere which will provide the same enjoyable and important function.

3. Wetland area / younger persons BMX features

The area under the Clift House Road flyover is something of a dead area in that the exit from the park is not obvious, and this corner of the park feels 'off the beaten track'. In order to create an area which provides further play value for younger people, which is both still visible from most parts of the park, yet away from the main family and young children's areas, we have investigated how this area could be developed to both enhance opportunities for wildlife and create an area for younger children to develop their bicycle skills. This is the area of the park which is most likely to retain water after rain, and lends itself to the creation of some wetland features. Using earth mounding to create humps and wooden platform routes through shallow puddles, the area can provide challenge for younger riders. This combined with meadow planting on slopes and commissioned art works on pillars creates the potential for a project developed with and for young people .

4. Entrances and Park Boundaries

There is a need to make the entrances to the park visible, welcoming and to provide adequate information about the park upon entry. This should include ownership and responsibility, restrictions where there are any, routes through including disabled access, and location and use of facilities, times of opening (i.e. tennis courts, bowls green). The

boundary walls and railings where they exist, continue to provide a strong edge to the park and the pillars at the main entrance are a strong feature. Most of the entrances however, have become cluttered with inappropriate and uncoordinated items. Entrance areas will be de-cluttered and designed with only necessary items of furniture and signage appropriate to each entrance way.

In general, the mix of signage is poorly located, haphazard and uncomplimentary to the park environment. Different signage information is appropriate to different entrances, hence a suite of signs will be developed for use in various locations. The aim is to reduce the clutter, provide an adequate level of information to park users, make the park understandable, and form links to nearby destinations and leisure routes around the neighbourhood.

During consultation, people indicated they did not wish the historic park railings to be reinstated, as they felt this gave the park a forbidding and unwelcoming appearance and were too costly, therefore no new railings will be installed along Ashton Road. The remaining railings on the corner of Frayne Road will need repainting.



An example of current signage in the park

While the heavily shrubbed boundary with Winterstoke Road provides some appearance of separation from the dense traffic, it also reduces visibility into the park, reducing passive surveillance and can make the park intimidating, if left to get out of hand. This boundary needs to be kept under control so that it doesn't Shrub-up and begin to extend into the Park too heavily. Some selective removal of shrubs to leave visual gaps could be beneficial to the safety of the park.

There are also trees and low bushes along the Frayne Road boundary of the park. This area needs to be preserved and improved, not just of wildlife, but also for children's play - it is a natural wild area where dens are made and many exciting games are played.

5. Horticultural planting beds

Horticultural planting beds add colour and life to a park, providing seasonal interest and visual pleasure, if well designed and maintained. Cut backs in funding have reduced these types of features in our parks over the years. However, the value that park users place on such features is evidenced through the proposal last year for Frogs to design and plant up the flower bed at the north Ashton Road Park entrance.



The flower bed at the north Ashton Road entrance

This has been a great success, and a visual treat throughout the changing seasons of the year.

The reinstatement of such horticultural features and the creation of new flower beds in different locations - particularly at the park entrances, and around the new pavilion - form a part of this improvement plan. Recent trends in horticultural practice have shown how planting up beds with perennials, rather than annuals, can both ensure diversity and interest year around, but also reduce costs in both plant purchase and annual maintenance. However, ensuring that such beds are kept weed and litter free is a prerequisite to their long-term sustainability. Now that the park has an on-site park keeper, this maintenance regime will be possible.

Planting schemes will be designed for the main entrances and around the park building. Planting at entrances will be based on the historic layouts but will not necessarily replicate them. All planting designs will be in consultation and collaboration with the Friends group.

6. Reinstatement of Water Fountain

The loss of the historic water fountain and the gates at the Ashton Road Entrance has reduced the prestige and statement feature of this main park entrance.

For the main entrance on Ashton Road, it is proposed to reintroduce a sculptural water fountain as a gateway feature. This could be a commissioned public arts project in the park. Fountains prove difficult features to maintain, but with careful design and the involvement of local people in the design and commissioning process, this should be achievable.

The provision of drinking fountains in Parks is another issue which is under discussion. Issues relating to vandalism and maintenance, health and safety have not been resolved. This may be resolved when the a new pavilion is constructed which enables better supervision of the service within the building.

7. Tree-lined Pedestrian Avenue

There is a footpath across the park which runs from the main western Ashton Road entrance to the north west corner of the park. It is proposed to make a feature of this footpath, and to increase the Arboricultural interest of the Park, by planting an avenue of tree on either side of this footpath. The tree species recommended for this location are London Planes or Limes. (This work is on hold due to the potential impact on the football pitches.)

This avenue will create the feeling of a formal promenade. They will be planted as spacings to allow them to mature and become a significant landscape feature. The trees will be located so as not to interfere with the existing football pitches.

As part of the promenade, it would be beneficial to install some interpretation panels, giving both some history of the park itself, but also to provide information about the underground pumping system located within the park, which is part of the flood control mechanisms for the city.



Part of the underground pumping system located within the park

7a. Trees, General

As part of the ongoing tree management regime throughout Bristol Parks, Greville Smyth trees are subject to regular surveys to identify their overall health and likely longevity. Where trees have had to be removed for safety reasons, replanting of similar or complementary species has taken place to ensure a good range of tree cover, varied wildlife habitat, disease resistance, and hence continued health and longevity of tree within the park. Through the Trees for Bristol programme, and with funds raised by the Friends group, new trees have been planted in Greville in 2007 & 2008. The tree planting events have brought members of the community together to participate in an activity which make a long-term investment in the park and the neighbourhood. New tree planting will continue to be part of the park improvement plan.

Wherever possible, the tree trunks of felled trees are left in the park to act as features for adventure and play, and to add to the natural habitats for invertebrates who live in and

feed on the wood as it naturally decays in situ.

8. Viewpoints

The area of the slopes on the central southern area of the park is covered in heavy shrubs with dense foliage. This creates areas of tightly enclosed footpaths, and restricts or eliminates a number of good views across the park to the Ashton Court estate and deer park.

While some inclosure can add mystery and the thrill of discovery to 'rooms in the park', some selective shrub clearance will reduce the oppressive nature of the foliage cover, open up views, while still retaining the 'rooms within the park' nature of the spaces around Prospect Point. In addition, selective shrub clearance can reduce crowding and allow certain specimen plants room to reach their full mature potential.

9. Connectivity to riverside walks, cycle path and leisure areas beyond the park

Greville Smyth Park is located quite close to the New Cut and the River Avon where it flows from the Floating Harbour to Avonmouth. The Ashton Court estate is also geographically close to the park. There are a number of walking and cycling routes which join the park to these other recreational spaces, but their connection is not obvious or visible.

Better signage, way-marking, and information will enhance the leisure experience of park users, and bring new users into the park who perhaps were not aware of how these routes connect. More visible entrances and, wherever possible, removal of barriers to access will be looked at to improve this connectivity.

10. Bus stop improvements

A number of park users and members of the public indicated that the park would be enhanced by the improvement to the bus stop on Ashton Road, which is located adjacent to the Ashton Road main park entrance. We will work with First Bus and campaign for bus stop improvements in this location.

Greville Smyth is located on 24 & 25 bus routes from the City Centre.

It was evident from public consultation that improvements to the existing park furniture was a high priority for local people. There are numerous items of furniture throughout the park of varying styles and designs including benches, bins, sign posts and boards etc. An audit of existing furniture has been undertaken and this has identified items of furniture that need replacing or gaps where additional items are required. A consistent approach is required to ensure that the design and style of each item is appropriate to the character of the park and its location within the park.

Other issues raised in discussion

- **Lighting**

It is not a policy to light parks after dark, unless there is a prominent and public through route used by a high number of people or lack of alternative route around the park. At Greville Smyth, it would not be considered appropriate to encourage people to use the park as a through route after dark and therefore there are no proposal to light the park.

When the Park Pavilion is redeveloped, this item will be revisited, as it is likely that the use of the pavilion building will required access by pedestrians in the evening for functions or events. In this regard, there may be reasons to light a pathway to the pavilion building from one or more park entrances.

- **Trim Trail**

A latter proposal for the improvement plan was a suggestion for the creation of a trim trail circuit within the park. Due to the park's modest size, it is suggested that rather than installing free-standing outdoor exercise equipment around the park, that Touchwood be asked to investigate how the existing tree trunks, left in the park, could be modified for use in situ to provide an exercise regime , with the 'circuit' being the existing park footpaths.

- **Wildlife and Ecology**

The character of the park has been enhanced through the planting of a wildflower meadow in the south east corner of the park. This has diversified the grassland habitat and will cater for a broader range of invertebrates and other wildlife. This meadow was first planted by FrOGS working with local school children, and has been enlarged in size over the last year. However, construction traffic by the contractor resurfacing the tennis courts, has damaged the top of the meadow and there will be a need to monitor the quality of the reinstatement, and enhance with additional planting of native wildflowers where necessary.

The mature trees, shrubs, boundary hedges and undergrowth, fallen retained logs all contribute to making the park a haven for wildlife. A maintenance and improvement regime which is beneficial to wildlife is embedded in the aims of this plan.

- **Tennis Courts and Bowling Green**

On the east side of the park, the tennis courts and bowls green provide formal leisure facilities for public play, which are self-managed by established sports clubs. The tennis courts have recently been resurfaced and re-fenced, and the area around the courts replanted. The Greville Smyth Park tennis club is actively recruiting new members.

The bowls green is managed under a licence agreement with the City Council.

The changing and social facilities associated with this facilities ,within the existing park pavilion, are very poor as already mentioned. Proposals for a new pavilion and changing rooms have been developed to address the current poor provision and the future needs of these groups, but the development will be dependent on securing a mixed package of funding from sports bodies, Section 106 agreements and City Council capital budgets.

While the bowls club members have been keen to provide more car parking on the site for their less mobile members, there has been strong resistance from other park users and local residents to this proposal. No car parking is proposed on site, other than what the club currently has access to behind the green.

- **Play Areas**

Greville Smyth is a formal green space but it also has a vital role to play as a space for children's play. The existing play facilities were improved through the support and fund raising undertaken by FrOGS. There is a desire by the group to enhance the existing provision through adding elements of natural play. The proposals set out in No. 2 above aim to address this, through design elements using natural materials, logs, rocks and which can also act as a natural performance space for outdoor display and theatre.

In addition, the BMX area Proposal No. 3 will increase the opportunities for 8 - 13 year olds by providing further challenge within the existing park environment.

Further development of the designated play area will progress as and when funding allows.

- **Art**

A number of opportunities for improving the park through the installation of art works, or the use of artist design features as part of the improvement works have been included in this improvement plan. These include the reinstatement of a fountain at the Ashton Road entrance, the decoration of the columns under the Clift House Road flyover, and incorporation in the facade elements of the proposed pavilion have all been identified. There may be other opportunities such as within the amphitheater proposals or the interpretation of the storm water pumping system for more creative design input. Opportunities for installing art work will be investigated and specific briefs will be developed for each site to ensure art in the park is relevant and appropriate for its surroundings.

6 Funding and Monitoring

Funding

The Council approves an annual revenue budget for day to day management and maintenance of the city's parks . This should ensure that Greville Smyth Park is maintained to a certain standard and should be able to fund small scale improvements such as the installation of new bins or benches.

Other larger schemes such as the pavilion will be funded from capital budgets. Levels of funding available as part of the capital spending programme are currently limited and there will always be a number of projects across the city competing for funds at any one time. However Bristol Parks will seek to increase the overall level of funds available by applying to external organisations such as the lottery and sports governing bodies. Other funding for improvements will come from the sale of low value green space as outlined in the PGSS.

In addition funding will be available through section 106 agreements. This is funding that is received by the council from a developer, who has recently developed a land for housing

or other uses, for which a requirement to provide or support public open space is part of a mitigation strategy to combat the negative effects of that development on the community.

Community groups such as FrOGS have been very instrumental in raising funding through small grants for investment in the city's parks. It is hoped this Improvement Plan will be influential in demonstrating an over-arching strategy for park improvement and investment to potential funders.

As outlined above the funding required to implement the improvement work will come from a number of different sources therefore the implementation of works is subject to sufficient funding becoming available through S106 agreements and the PGSS and on successful applications to external organisations such as the Big Lottery. Some improvements may need to be brought forward in the programme if funding becomes available to implement them earlier than planned and others may be put back if funding is not forthcoming.

Monitoring

FrOGS would wish to see this plan monitored and reviewed on an annual basis. Performance indicators will help to assess the level of improvement being made during the plan's life. This will include continued assessment through the Parks Quality Assessment score.

8 Management and Maintenance

Greville Smyth Park comes within the South Area Contract for parks maintenance operations. This Contract has been recently re-tendered and won by Quadron. This contract will run for a period of five year to February 2014. The grounds maintenance contract covers the maintenance of all types of grass, shrub, flower and rose beds, sports pitches and pavilions

Quadron undertake the day to day maintenance of the park, the regular grass cutting, cleansing, maintenance of planting beds, shrubs and hedges, and wildflower meadow.

Much of this day to day work falls to the on-site Park Keeper who is directly employed by Quadron. Having an on-site presence enables the park to be maintained to quite a high standard, with daily issues being resolved quickly, and daily supervision of the park resulting in a reduction of incidence of vandalism and/or anti-social behaviour. Currently, the hours of on-site presence do not always cover the times of peak use of the park, in particular after school times and weekends. A move to more flexible working in the future may enable the council to shift some of the on-site presence to hours of peak use.

The park keeper also interacts with the public, providing a friendly and welcoming face of the Parks Service to park users and visitors. The Park Keeper works closely with FrOGS to support and facilitate community activities in the park including planting of flower beds and events where access to the pavilion facilities may be required.

While the maintenance of the sports turf falls to the contractor, the Ashton Boys Club often take responsibility for setting out the pitches, goals and other equipment friendlies and training sessions.

GREVILLE SMYTH PARK - Historical Tree / Routeway Mapping



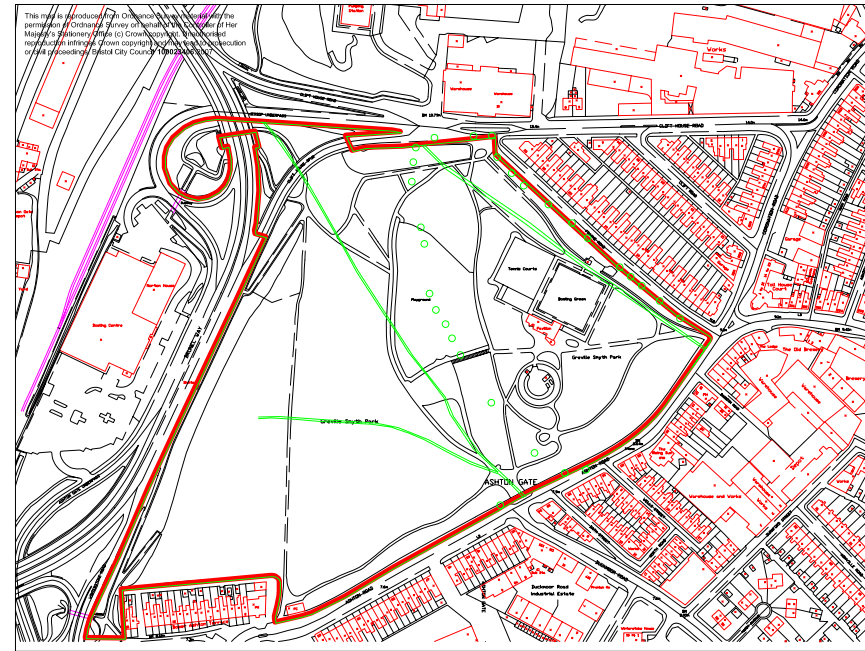
Sketch by S. Lorton, a view in Greville Smyth Park



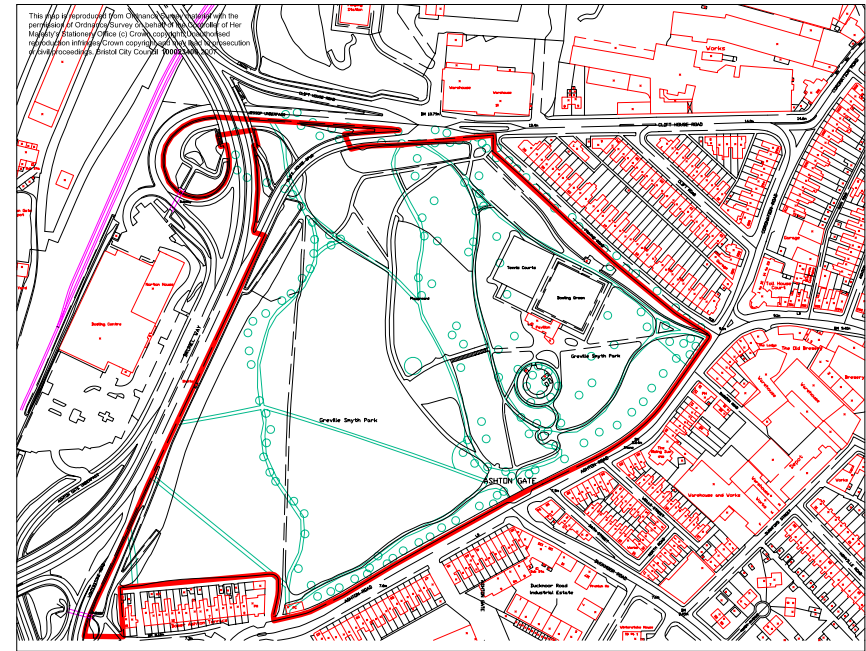
Sketch by S. Lorton, a view in Greville Smyth Park (Boat on lake and Church)



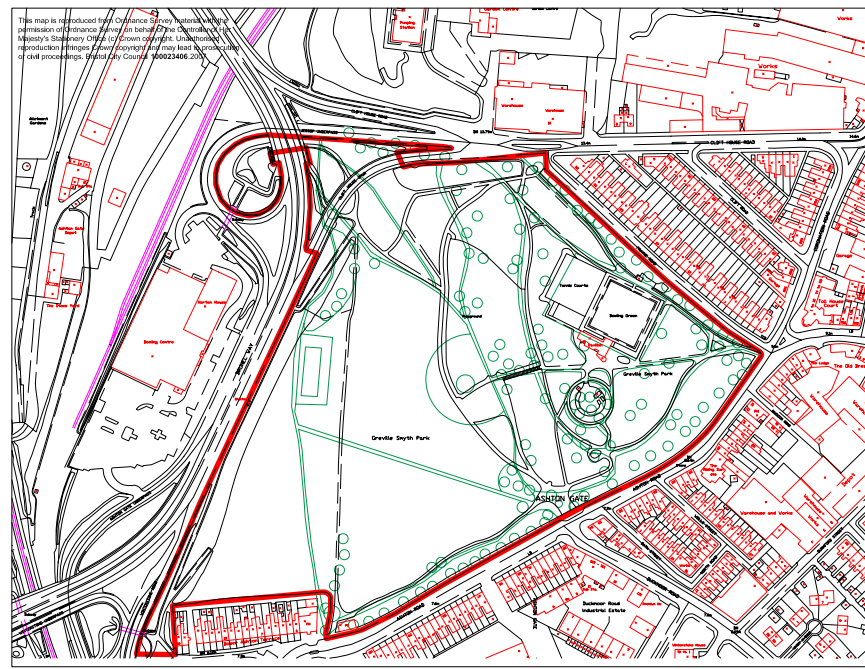
Sketch by S. Lorton, a view in Greville Smyth Park (Suzerland and Carr suspension bridge in the background)



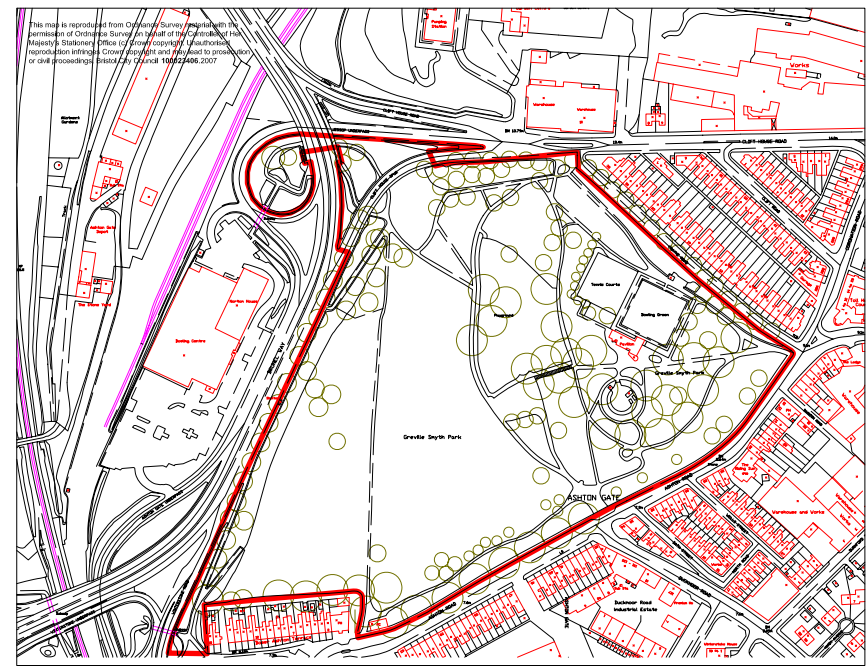
● Existing layout ● 1881 layout



● Existing layout ● 1903 layout



● Existing layout ● 1915 layout



● Existing layout ● 2004 trees

Revision No.	Revision Note	Date	By

BRISTOL CITY COUNCIL
 Landscape Design Team
 Planning, Transport & Sustainable Development
 Brunel House, St George's Road, Bristol BS1 5UY. Tel: 0117 9223719 Fax 0117 9224637

Project Title GREVILLE SMYTH PARK
Drawing Title Historical Tree / Routeway Mapping
Date 07.08.07 **Drawn by** AS **Checked by** **Project No** 1/2000
Drawing Scale Consultation **Drawing No** 01 **Rev**

NS: Do not scale off this drawing. Check all measurements on site.



GREVILLE SMYTH PARK - Plan showing correlation between Historical Maps & Features

- 1882 - Gift of 21.5 acres from Sir JH Greville Smyth to the city
- 1883 - Conveyance signed
- 1883 - 84 Contracts let for construction work
- 1884 - Turf taken up in the lower parts of the land, ground raised by 2 feet and turf relaid to protect from flooding
- 1902 - Further four acres given by Lady Smyth (Bedminster Park re-named Greville Smyth Park)

Ashton Avenue built 1888 - 1903

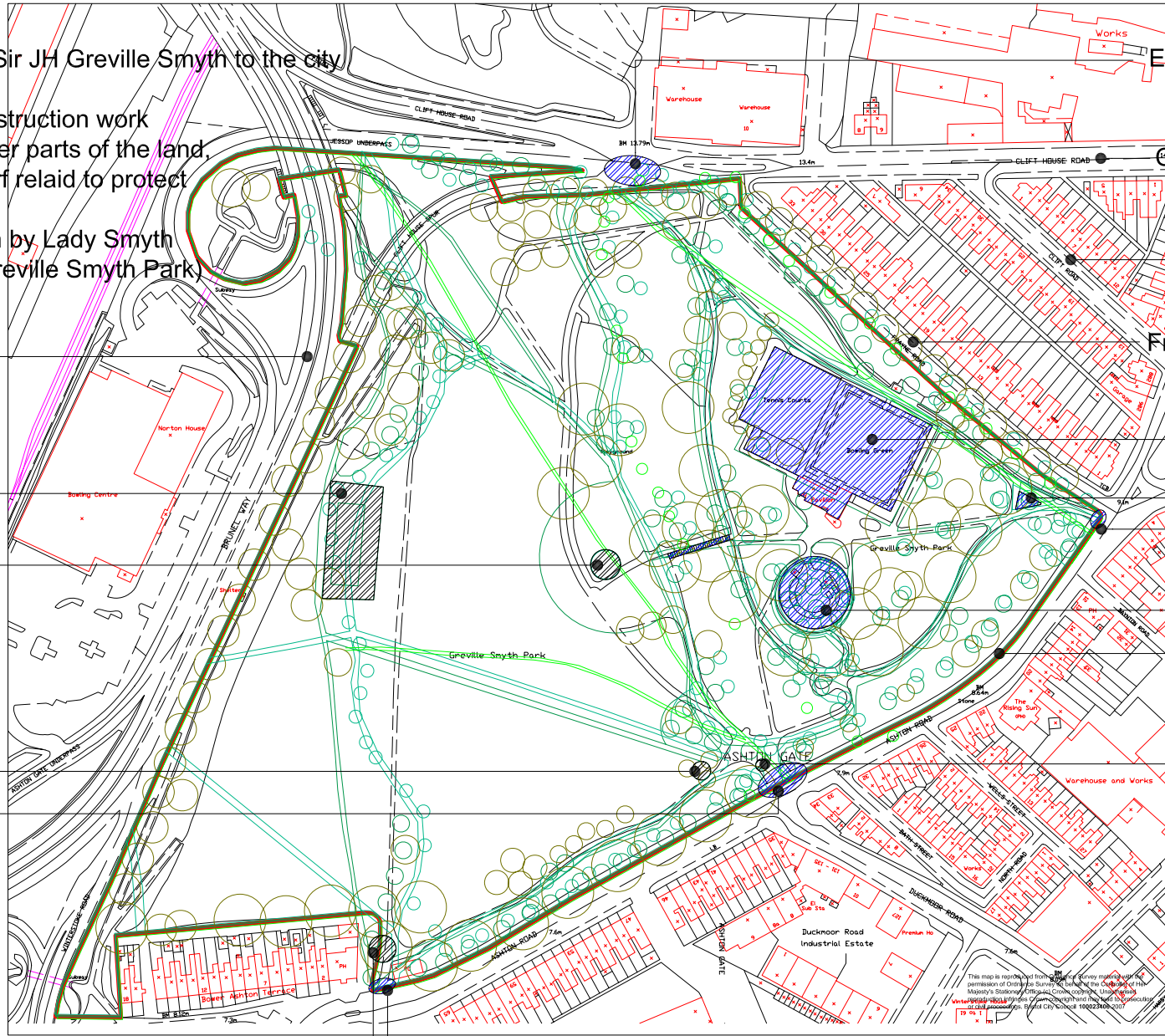
Open air swimming pool built 1905

Bandstand built 1887

Drinking fountain and two urinals built 1887

Entrance flower bed

Main Entrance / Exit off Ashton Road



Entrance / Exit off Clift House Road

Clift House Road built 1903 - 1918, extended 1964

Clift Road developed 1903

Frayne Road developed 1903

Bowls chalet built 1909

Entrance flower bed

Entrance / Exit off Ashton Road

Prospect point

Perimeter Iron railings and stone wall built 1885

Location of water fountain

Key:

- 1881 (Green circle)
- 1903 (Teal circle)
- 1915 (Light green circle)
- 2004 (Brown circle)
- Past Historical Features (Hatched circle)
- Historical Features remaining today (Blue hatched circle)



Entrance flower bed

Entrance / Exit off Ashton Road

Revision No.	Revision Note	Date	By
BRISTOL CITY COUNCIL Landscape Design Team Planning, Transport & Sustainable Development Brunel House, St George's Road, Bristol BS1 5JY. Tel: 0117 9222719 Fax: 0117 922 4837			
Project Title GREVILLE SMYTH PARK			
Drawing Title Correlation between Historical Maps			
Date	Drawn by	Checked by	Scale
07.08.07	AS		1/1000
Drawing Issue:	Project No.	Drawing No.	Rev.
Consultation		02	Rev.
<small>Nil. Do not scale off this drawing. Check all measurements on site.</small>			

GREVILLE SMYTH PARK

This map is reproduced from Ordnance Survey material with the permission of Ordnance Survey on behalf of the Controller of Her Majesty's Stationery Office (c) Crown copyright. Unauthorised reproduction infringes Crown copyright and may lead to prosecution or civil proceedings. Bristol City Council 100023406.2009

Park boundary line

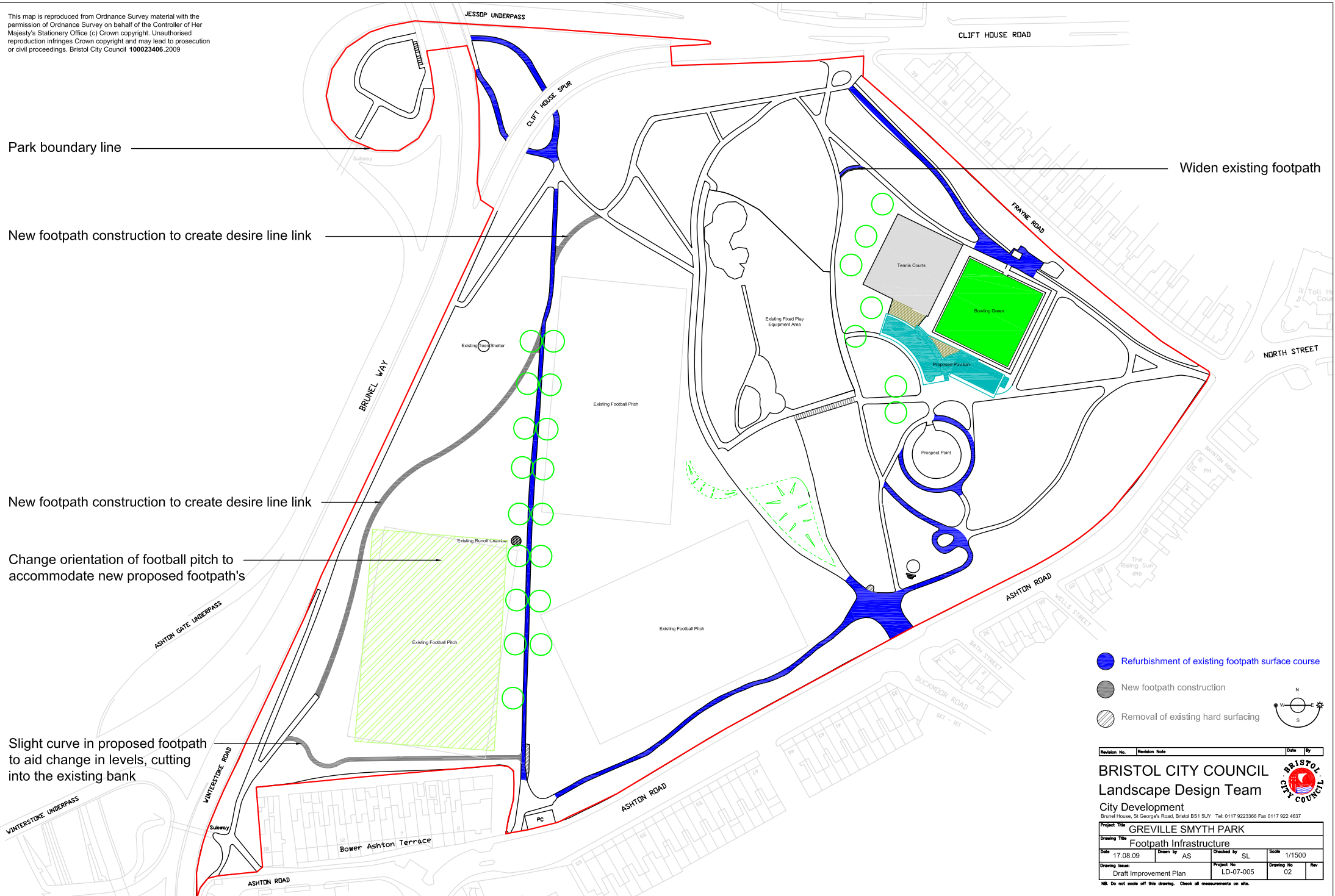
New footpath construction to create desire line link


New footpath construction to create desire line link

Change orientation of football pitch to accommodate new proposed footpath's

Slight curve in proposed footpath to aid change in levels, cutting into the existing bank

Widen existing footpath



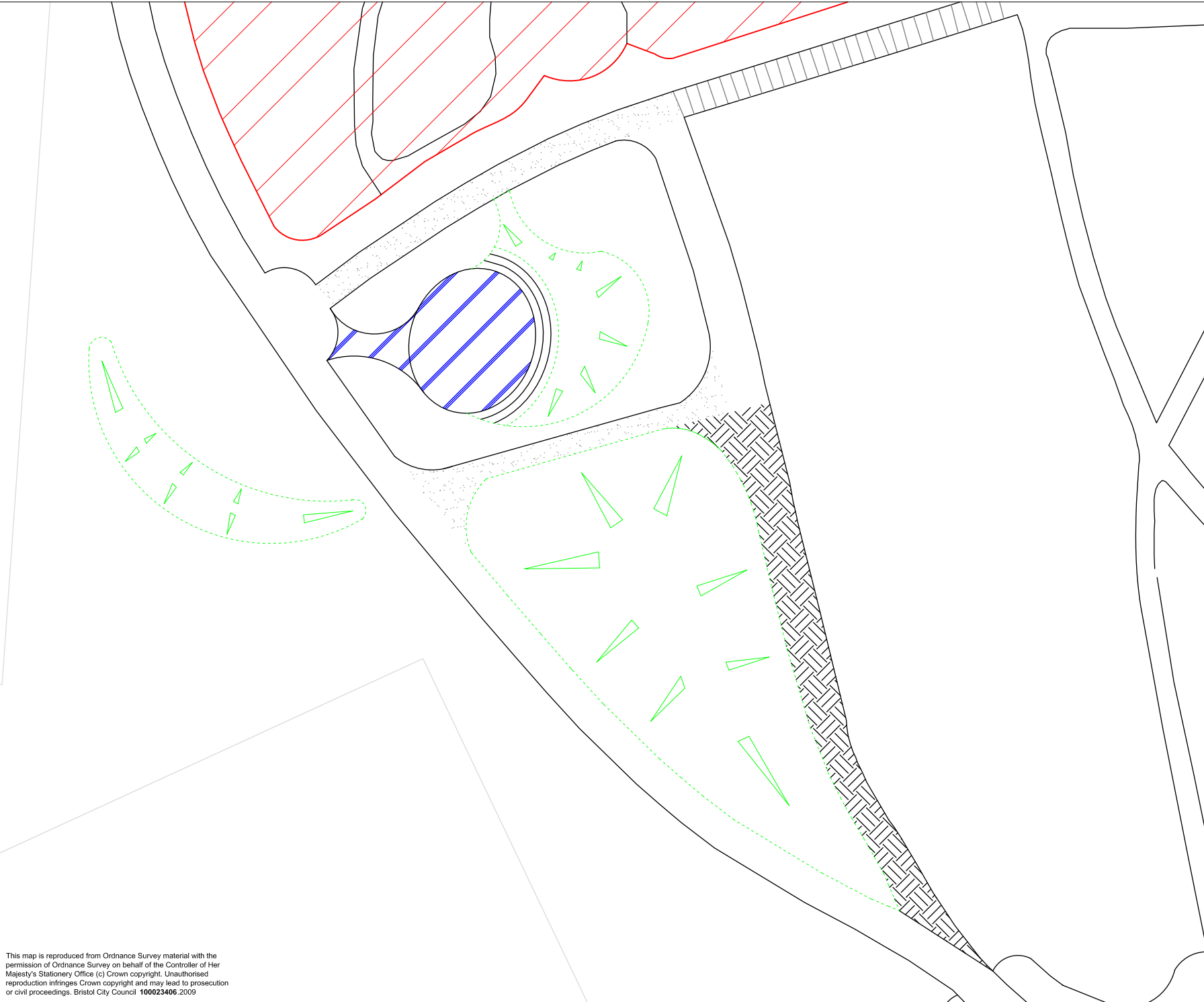
-  Refurbishment of existing footpath surface course
-  New footpath construction
-  Removal of existing hard surfacing






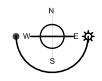
Revision No.	Revision Note	Date	By
<p>BRISTOL CITY COUNCIL Landscape Design Team City Development Brunel House, St George's Road, Bristol BS1 5UJ Tel: 0117 9223366 Fax 0117 922 4637</p>			
<p>Project Title GREVILLE SMYTH PARK</p>			
<p>Drawing Title Footpath Infrastructure</p>			
Date	Drawn by	Checked by	Scale
17.08.09	AS	SL	1/1500
<p>Drawing Issue: Draft Improvement Plan</p>		<p>Project No: LD-07-005</p>	<p>Drawing No: 02</p>
<p>Rev:</p>			

NB: Do not scale off this drawing. Check all measurements on site.

GREVILLE SMYTH PARK



-  Proposed earth modeling to create amphitheatre
-  Proposed amphitheatre seating
-  Proposal to remove existing footpath
-  Proposed Landscape works to entrance of new amphitheatre to include; surfacing works and seating
-  Proposed footpath construction



Revision No.	Revision Note	Date	By

BRISTOL CITY COUNCIL
Landscape Design Team
 City Development
 Brunel House, St George's Road, Bristol BS1 5UY Tel: 0117 9223366 Fax 0117 922 4637

Project Title GREVILLE SMYTH PARK

Drawing Title 2 - Amphitheatre

Date	Drawn by	Checked by	Scale
17.08.09	AS	SL	N.T.S.

Drawing Issue:	Project No.	Drawing No.	Rev
Draft Improvement Plan	LD-07-005	04	

NB: Do not scale off this drawing. Check all measurements on site.




This map is reproduced from Ordnance Survey material with the permission of Ordnance Survey on behalf of the Controller of Her Majesty's Stationery Office (c) Crown copyright. Unauthorised reproduction infringes Crown copyright and may lead to prosecution or civil proceedings. Bristol City Council 100023406.2009

GREVILLE SMYTH PARK

JESSOP UNDERPASS

CLIFT HOUSE SPUR

Proposed artwork installed on existing flyover pillars

-  Proposed marsh area with wetland planting
-  Proposed BMX / bike track path construction
-  Proposed timber logs installed to create informal bmx / bike track



Revision No.	Revision Note	Date	By

BRISTOL CITY COUNCIL
 Landscape Design Team
 City Development
 Brunel House, St George's Road, Bristol BS1 5UY Tel: 0117 9223366 Fax 0117 922 4637

Project Title GREVILLE SMYTH PARK

Drawing Title 3 - Area under Clift House slip road

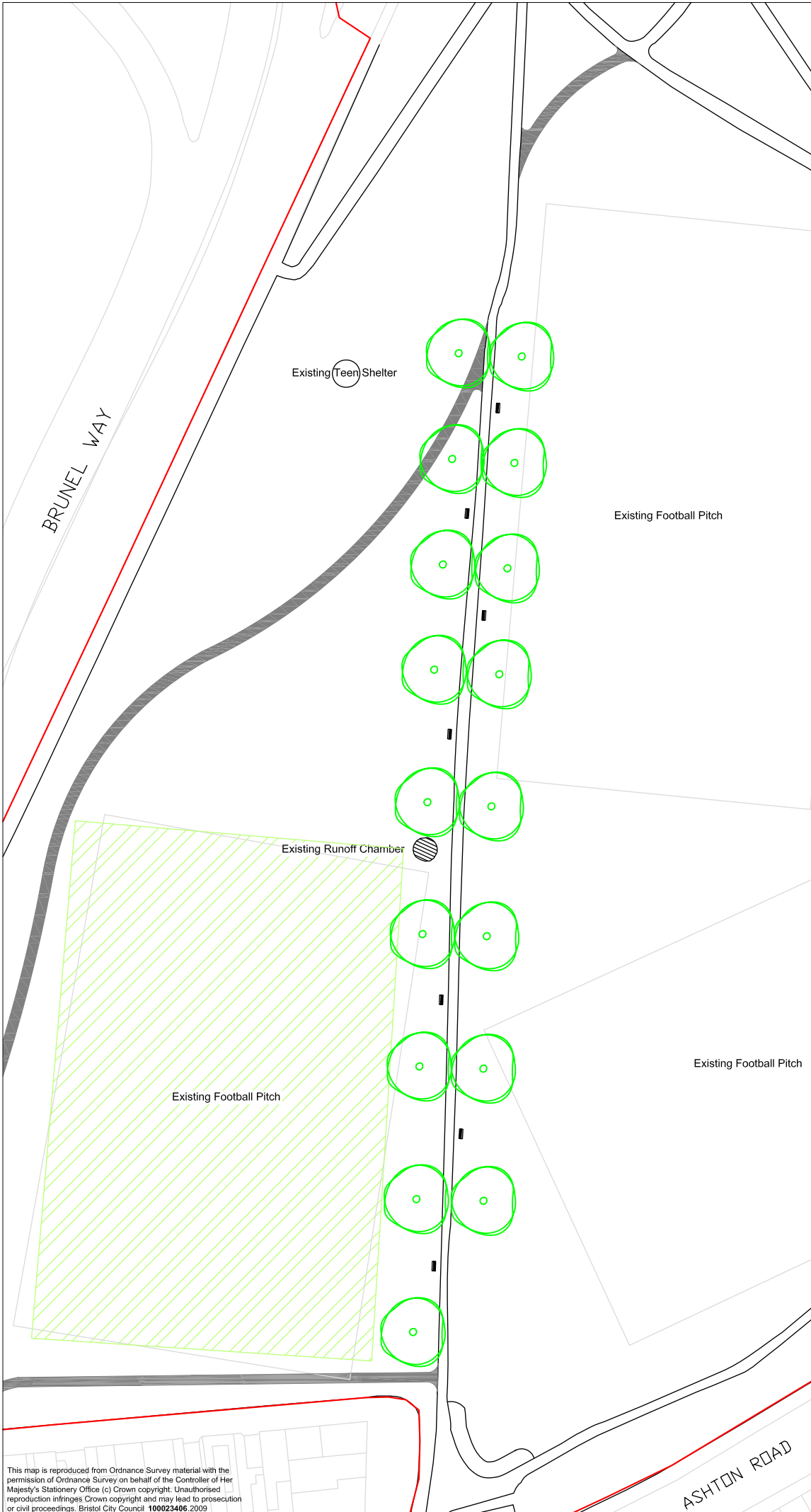
Date	Drawn by	Checked by	Scale
17.08.09	AS	SL	1/250 @ A3



Drawing Issue:	Project No	Drawing No	Rev
Draft Improvement Plan	LD-07-005	05	

NB. Do not scale off this drawing. Check all measurements on site.

This map is reproduced from Ordnance Survey material with the permission of Ordnance Survey on behalf of the Controller of Her Majesty's Stationery Office (c) Crown copyright. Unauthorised reproduction infringes Crown copyright and may lead to prosecution or civil proceedings. Bristol City Council 100023406.2009

GREVILLE SMYTH PARK



-  Proposed tree avenue
-  Proposed park benches



Revision No.	Revision Note	Date	By

BRISTOL CITY COUNCIL
 Landscape Design Team
 City Development
 Brunel House, St George's Road, Bristol BS1 5UJ Tel: 0117 9223366 Fax: 0117 922 4637

Project Title			
GREVILLE SMYTH PARK			
Drawing Title			
7 - Tree Avenue			
Date	Drawn by	Checked by	Scale
17.08.09	AS	SL	N.T.S.
Drawing Issue	Project No	Drawing No	Rev
Draft Improvement Plan	LD-07-005	06	

NB: Do not scale off this drawing. Check all measurements on site.

This map is reproduced from Ordnance Survey material with the permission of Ordnance Survey on behalf of the Controller of Her Majesty's Stationery Office (c) Crown copyright. Unauthorised reproduction infringes Crown copyright and may lead to prosecution or civil proceedings. Bristol City Council 100023406.2009

A. Summary of Costs						Year 1	Year 2	Year 3	Year 4
Priority	PROPOSALS	Timescale	Cost	Potential Funding Source	2010	2011	2012	2013	
Preliminary Work									
Complete	New infrastructure – Tennis Courts Resurfacing	2008/09		Lawn Tennis Association					
Complete	Prepare Feasibility study for New Pavilion	2007/08		S106					
Complete	Prepare plans for Park Access to Ashton Road Toilets	2008/09		In-house					
High	Business plan for pavilion	2009/2010		In-house					
1 New Park Pavilion									
High	Redevelop the park pavilion to provide cafe/kiosk, community space, changing rooms for tennis bowls and football	2011	£800,000	S106, Sport England, Biffa, other grant			800000		
High	Landscape works in relation to new pavilion	2012	£45,000	as above				45000	
	Intermediate works to refurbish changing rooms for immediate use, pending redevelopment of pavilion	2009	£24,000	Sport England, Parks	21000				
2 Amphitheatre - performance space and natural play area									
	Create a natural play area which can act as an amphitheatre for informal performance		£25,000	S106, Play Budget		25000			
3 Area under Cliff House Slip Road									
	Create wetland area with trails through and across		30000	Grant Natural England				30000	
	Build some small, but challenging BMX features for younger riders		20000	S106			20000		
	Work with local children to commission art work on pillars		£5 - 8,000	grant			5000		
4 Entrance Features and Boundaries									
Medium	Bower Ashton Terrace, West - signage and footpaths as below		-						
Medium	Ashton Road West - signage as below		-						
Medium	Ashton Road Main Entrance - Pillar refurbishment, planting, paving, new signage (below)		£15,000	S106		15000			
	New Fountain		£30,000	S106		30000			
Complete	Ashton Road East								
Low	Paint Railings, Frayne Road		£10,500	Blue Skies/Volunteers			10500		
Medium	Cliff House Road/Frayne Road - Boundary treatment, planting, footpath		£15,000	S106				15000	
Low	Cliff House Road/Winterstoke Road		£1,500	S106		1500			
5 Horticultural Planting									
Complete	Ashton Road East Triangle	Completed	-						
Complete	Replanting Adjacent to Tennis Courts	Completed	-						
Medium	Ashton Road Main Entrance - New, included as above		-						
Medium	Ashton Road West Entrance - meadow restoration as below		-						
Medium	Planting around new Pavilion in included in 1 above.		-						
6 Park Furniture + Signage									
Medium	Replace park furniture as and when necessary with a style appropriate to its location.	Ongoing	£10,000	Maintenance Budget/ S106		3000	3000	4000	
	Seating in relation to new tree avenue - 7 No.		£6,125		6125				
Medium	Refurbishment and replacement of Park Entrance signage	2009/11	£8,500		1000	2000	2000	3500	
Medium	Interpretation of historic features and flood control system	2010/11	£5-10,000			5000			
7 Trees									
Medium	New Tree Avenue	2009/10	£8,000	Tree Bristol/FrOGS	8000				
Medium	Other new Tree Planting	2009/10	£2,000	Tree Budget		2000			
8 Toilets									
High	Modification to Ashton Road Toilets to access from Park and provide for disabled use		£11,414.00			11414			
Medium	New public toilets in redeveloped pavilion								
9 Footpaths									
	New - Bower Ashton Terrace as per drawing No.		£30,000				30000		
	Refurbishments as per drawing No.		£45,000			15000	15000	15000	
	Removal as per drawing no. (part of amphitheatre proposals)								
10 Wildlife and Ecology									
Partially complete	Meadow extension and restoration	2008/10	£1,500	Landscape Team and FrOGS	1500				
11 Trim Trail and Measured Miles									
Medium	Create new trim trail features in the park	2009/10	£3,500		3500				
Medium	Mark measured miles and running routes	2009/10	£2,000			2000			
12 Bowling Green									
Low	Improvements to perimeter fence		£35,000				35000		
13 Art									
Low	Art to be commissioned as and when appropriate	Ongoing	£20,000	S106/Other				10000	
14 Fees									
	Landscape Architect/Engineers Fees - to be commissioned as and when required.	Ongoing	£220,059						
					41125	111914	920500	122500	
	Spend Profile	Inflation Rate	Final Cost	Spend Profile	Fees	Sub total	Inflation rate	inflation sum	Final Cost
Spent				80428					80428
Year 1				41125	18.00%	7402.5			48528
Year 2				111914	18.00%	20144.52	2.00%	2641.17	134700
Year 3				920500	18.00%	165690	4.00%	43447.6	1129638
Year 4				122500	18.00%	22050	7.00%	10118.5	154669
Ongoing									
				£1,276,467	18.00%	£215,287			£1,547,961

B. Programme of Implementation

		with inflation and fees	
Pre Improvement Plan Work 2009 - Completed			
Refurbish tennis courts	£70,194		
Feasibility study, new pavilion	£8,484		
Access Audit	£650		
Consultation	£1,100	£80,428	£80,428.00
Year 1 2010/11			
Intermediate refurbishment of pavilion change	£21,000		
Tree avenue	£8,000		
seating in relation to tree avenue	£6,125		
Refurbishment of park signage	£1,000		
Meadow restoration	£1,500		
Trimtrail	£3,500		
Natural Play area/amphitheatre	£25,000	£66,125	£78,028
Year 2 2011/12			
Ashton Road Main Entrance refurbishment	£15,000		
Water Fountain	£30,000		
Clift House Road/Winterstoke Road treatment	£1,500		
Park furniture replacement and repair	£3,000		
Park Entrance signs	£2,000		
Interpretation of flood control system	£5,000		
Tree Planting	£2,000		
Modification of Ashton Road Toilets	£11,414		
Footpath refurbishments	£15,000		
Measure mile and other footpath markings	£2,000	£86,914	£104,610
Year 3 2012/13			
Redevelop park Pavilion	£800,000		
Construct BMX area	£20,000		
Art work on pillars	£5,000		
Paint railings Frayne Road	£10,500		
Park furniture repair and replacement	£3,000		
Park Entrance signage	£2,000		
new footpaths from Bower Ashton entrance	£30,000		
Footpath refurbishments	£15,000		
perimeter fencing of bowling green	£35,000	£920,500	£1,129,638
Year 4 2013/14			
Landscape works in relation to Pavilion	£45,000		
Create Wetland area	£30,000		
Clift House Road/Frayne Road entrance treatment	£15,000		
Replace/repair park furniture	£4,000		
Park Entrance Signage	£3,500		
refurbish footpaths	£15,000		
Artworks	£10,000	£122,500	£154,669
On-going costs - all years			
Fees	£220,059		
		£1,276,467	£1,547,371

- NB please note that the above programme is subject to sufficient funding being available to implement the improvements. Some improvements may need to be brought forward in the programme if funding allows and others may be put back.