

EXMOOR NEWS

Bringing community news across southern Exmoor since 1985

FREE

March/April 2020

Bampton
Bridgetown
Brompton Regis
Brushford
Bury
Cutcombe
Dulverton
East Anstey
Exebridge
Exford
Exton
Hawkridge
Luxborough
Molland
Morebath
Oakford
Simonsbath
Skilgate
Upton
West Anstey
Wheddon Cross
Winsford
Withel Florey
Withypool
Wiveliscombe



ACCOUNTANCY SERVICES

Offering a friendly, efficient service at a competitive price from your local Management Accountant

Book Keeping, VAT Returns, Management Accounts, Year End Software set up/assistance, Start Ups, Processes

Please call Sally for a free no obligation meeting to discuss your business needs; no project too big or too small!



01398 322828
07528 530476
sally@veristic.net

Veristic

The advertisement features a photograph of the Tongdam Thai Restaurant building, a white stone structure with a sign above the entrance that reads 'TONGDAM'. In the foreground, there are large green banana leaves and a sign for the restaurant. To the left, there is a small illustration of a man in a hat carrying a tray on his head. The text 'TONGDAM Thai Restaurant' is overlaid in large, gold, serif font. Below this, the new opening times are listed in white, bold, sans-serif font. At the bottom, the address and contact information are provided in white, sans-serif font, along with the website URL in gold, sans-serif font.

TONGDAM
Thai Restaurant

NEW OPENING TIMES
OPEN 6 EVENINGS
LUNCH SATURDAY & SUNDAY ONLY
CLOSED TUESDAY

26 High Street | Dulverton | Somerset | TA22 9DJ
01398 323 397 for reservations
www.tongdam.com

There are requests for volunteers in this issue - do you think you can help? If you are unable to get involved, then how about supporting them in their fund raising ventures? Every little thing you do to help is always gratefully received.



Thank you – we’re in the finals!!

Thank you to all who nominated us. We are a South West regional finalist for the Countryside Alliance Awards 2020 in the Rural Enterprise Category. It has been a pleasure to build up Exmoor News and make it what it is today, and most importantly be of service to the communities we cover. As we say on the front of every magazine, “Bringing community news across southern Exmoor”

In this issue we would like to thank the people who get this magazine out, be it delivery, advertising and the team in house. Thank you.

Best wishes, Ceri Keene and Claire Savill

E: exmoornews@gmail.com T: 07497 914441 W: www.exmoornews.co.uk

Post: The Old Stores, Brushford, Dulverton, Somerset, TA22 9AH

We take our responsibility to maintain high editorial standards seriously.

Should an error occur please do not hesitate to contact us.



Cover image 2019: ©Tony Keene

If you would like to see your photo on the cover send us a low resolution copy for our library. If used we will ask for a high resolution version and you too could be in print.



The deadline for the May/June issue of the Exmoor News is

Thursday 2nd April 2020

Printed by Brightsea, Exeter



EXMOOR NEWS MAGAZINE ADVERT SIZES – Prices may be subject to change. 3,000 copies printed

A5 whole page (123w x 188h mm)	Mono @ £68 per issue	Colour @ £91 per issue
A5 half-page (123w x 92h mm)	Mono @ £34 per issue	Colour @ £46 per issue
A5 portrait quarter page (60w x 92h mm)	Mono @ £17 per issue	Colour @ £23 per issue
A5 landscape quarter page (123w x 43h mm)	Mono @ £17 per issue	Colour @ £23 per issue

Whilst every effort is made to ensure the accuracy of the information in this magazine, no liability can be accepted by the editors and publishers for any loss, damage or injury caused by errors in, or omissions from, the information given. Please also note that in the publication of trade adverts, the editors do not guarantee the quality of services provided by any of these advertisers. The editors reserve the right to decline to publish any item and to amend or shorten material. All advert bookings are subject to our terms and conditions see www.exmoornews.co.uk/payments.

Under the Data Protection Act, we have a legal duty to protect any information we collect from you. We take appropriate security measures to safeguard your data and apply security standards and controls to prevent any unauthorised access to it.

Local Vineyard announces programme of concerts for 2020

Wellhayes Vineyard, just outside Clayhanger, has announced their programme of concerts for 2020. These concerts, which now regularly sell out, provide an opportunity to enjoy classical music concerts with international performers in an intimate setting overlooking the vineyard and, of course, the opportunity to enjoy the quality sparkling wine made on site from grapes grown in the vineyard.

There are nine events in this year's programme, running from April through to September. They provide a mixture of established professional musicians, such as Kryisia Osostowicz (Dante Quartet), David Waterman (Endellion Quartet), Devon Baroque and Graham Clark (International Wagnerian tenor), with young up and coming professional musicians, including Australian soprano Alexandra Flood (pictured), Latvian pianist Reinis Zarins and English violinist Florence Cooke. As well as concerts there are also talks, readings with musical excerpts and a singing masterclass.

Full details of this year's programme can be found at wellhayes.uk/concerts-2020.



Tuesday 10th March

KNIVES OUT (12A)

Funny and taxing Whodunnit with a modern edge.

Detective Blanc (Daniel Craig) sifts through a web of red herrings and lies to uncover the truth behind an untimely death.

Tuesday 7th April

OFFICIAL SECRETS (12A)

Gripping true story of British Intelligence memos being leaked to the press to stop the world rushing into an illegal war in Iraq.

Starring Keira Knightly as Katherine Gun.

WINSFORD VILLAGE HALL 7.30

Details can be checked on the Winsford Village Website www.winsfordexmoor.org.uk

VINTAGE FILM CLUB

Wed 11th March – **LOST IN TRANSLATION** – starring Bill Murray & Scarlett Johansson (2003)

Wed 8th April – **WHISKY GALORE!** – starring Basil Radford, Joan Greenwood & James Robertson Justice (1949) starting 2.30 pm at Fishers Mead Community Centre

DULVERTON ACTION GROUP -

Litter-picking (3rd Sunday):

Sundays 15th March & 19th April – 10.30 meet by the Heritage Centre - Everyone welcome and all kit supplied



QUIZ NIGHT

Hot Supper and Bar
Saturday 25th April

Dulverton Town Hall

7.00 for 7.30 pm start

Teams of 6 players

**Tickets available from the
Dulverton Post Office**

In aid of Dulverton Heritage
Centre. Tickets £12.00

Make Your Bucket List Official!

We will design, print and laminate an A4 sized bucket list for £10 plus P&P.

Send us your list, up to 50 items or so and we will design a couple of options for your approval.

So why not arrange one for yourself or for a friend, email us with your ideas and the size required.

E: exmoornews@gmail.com

T: 07497 914441



**General Builders,
Plasterers & Decorators**

07792 251977
andyhayesbuilder@yahoo.com

Call for our

- Project Management Services
- Insurance Works quotes
- Property purchase survey & estimates

All Aspects of.....

Alterations

Renovations, conversions
& new bathrooms

Plastering & Decorating

Internal & external plastering,
rendering, painting, new ceilings,
walls & over skimming

Roofing

Repairs, Renewals or cleaning.
Chimney repairs & rebuilds.
Guttering, cleaned, repaired or
replaced

General Building

including retaining walls,
stonework, repointing, patios,
fencing etc.

Over 30 Years Experience by Qualified Tradesmen



MALCOLM HARDING CONTRACTING

*Fencing and Hedge laying, Shearing
Chainsaw work, Hedge Trimming,*
Domestic enquiries also welcome

Contact Malcolm: 07787 427507



R & N Fruit & Veg

Fruit and
veg

Fresh local
milk

Logs and
kindling



NEW OWNERS

Open 8 - 5.30 Monday - Saturday
1 Fore Street Dulverton TA22 9EX



Exmoor Plumbing

Reliable Plumber no job too small

Radiators, cylinders, tanks, bathroom
suites, taps, ballvalves, washers, showers,
soilpipes, wastepipes, gutters.

All plumbing work covered



01984 639629 / 07970 632 114



FRIENDS OF
DULVERTON
LIBRARY

THE FRIENDS OF DULVERTON LIBRARY will meet on Thursdays March 5th and April 2nd at 2pm

THE LIBRARY BOOK GROUP will meet on Fridays March 6th and April 3rd at 2pm

THE CRAFTERNOONERS will meet on Friday March 13th at 2pm and again on Thursday March 19th at 10.30am. There will be no meetings in April

TRIVIAL PURSUITS CLUB will meet on Thursday March 19th at 2pm. There will be no meeting in April

THE KNIT AND NATTER GROUP will meet on Fridays March 27th and April 24th at 2pm

THE FRIENDS OF DULVERTON LIBRARY WILL HOST A COFFEE MORNING ON SATURDAY MARCH 28th at 10.30am

PLEASE CHECK IN THE LIBRARY FOR CHILDREN'S EVENTS HAPPENING DURING THE EASTER SCHOOL HOLIDAYS



Meets on the last Wednesday of the month at Fishers Mead Community Centre, Dulverton (adjacent to Exmoor Medical Centre) 10.15 for 10.30 am.

Wednesday 25th March

10.15 Prompt - Annual General Meeting
Followed by a talk with Anthony Poulton-Smith

'WHAT'S IN A NAME ? Origins of Place Names'

Wednesday 29th April

A talk by Phillip Bratby
'RENEWABLE ENERGY'

The Royal British Legion, Dulverton and District Branch



Monthly Coffee Mornings



Did you or your spouse serve in the Armed Forces (Regular or National Service)?

If so, you are cordially invited to join us for Coffee in the Dulverton Library on the first Tuesday of each month.

MOREBATH VILLAGE HALL

Registered Charity No. 207013 Events 2020



	<p>Saturday Breakfast Morning Also Tea – Coffee – Fruit Juice Other Goodies - Vegetarian Option Bric-a-Brac Stall</p>	<p>Saturday 16 May 10-12 noon</p>
	<p>Draws took place on the 11 October & 10 November 2019 1st prize £60, 2nd prize £30 and 3rd prize £20 The lucky winners were from Stoodleigh, East Anstey, Exebridge, and Morebath x 3. All winners have been notified.</p>	
<p>Morebath Yoga at the Village Hall. Mondays 10.20-12 noon.</p>		
<p>Forward session dates: 10th & 24th February. 9th & 23rd March. 6th & 20th April ** Members Annual Lunch 9th March 2020 ** British Wheel of Yoga Tutor. Temporary and new members always welcome. For more information please e.mail: rafton.mail@rockspray.co.uk</p>		

present

Dick Whittington

with Ben Crooke

Wednesday April 1st - Saturday 4th
7pm for 7.30pm
Matinee Sat 4th 2pm

Tickets available from
Dulverton Post Office
or call 01398 323474



April Fools' Day will be a laugh a minute when the Dulverton Players' production of "Dick Whittington" begins its four day run at the Town Hall. Olga Owen's colourful staging features a host of local actors, young and not so young. This is a traditional pantomime version of the famous story with all its favourite characters. Dick, the poor boy who becomes Lord Mayor of London, with the help of his magic cat, Tommy, battles the evil Queen Rat and wins the love of the beautiful Alice Fitzwarren.



Instrument Sales &
Repairs, Books, Sheet
Music, Gifts and much
more.....



Rock House, 1 Jury Road, Dulverton
Telephone 01398 324164

www.oggiesmusic.com

DULVERTON TOWN HALL TALES UNCOMFORTABLE

John Hartock, storyteller and John Harris on guitar and harp

SATURDAY, APRIL 18th at 7.30pm



Have you heard the story of the Watchet Sexton? Or of Sir Francis Drake's canon? Or the one about the talking cat, or the ghost who helped her murderer? Greek gods, American big-game hunters, frustrated toffee-makers and patient vultures - they're all part of Tales Uncomfortable

Expertly told with drama and humour by John Hartock, ex Head of Acting Courses at the Bristol Old Vic Theatre School, and accompanied and illustrated by the skilful musicianship of John Harris, the stories promise an evening of uncomfortable delight!

Tickets £10, £8 student in full time education, available from Dulverton Post Office or contact Jan Ross 01398 323818, janaross2003@yahoo.co.uk

Amicus Law

SOLICITORS

BUYING
& SELLING
PROPERTY



SHARED
OWNERSHIP



CRIMINAL LAW
& MOTORING
OFFENCES



WILLS
PROBATE
& TRUSTS



FAMILY LAW
& DIVORCE



DISPUTE
RESOLUTIONS



EMPLOYMENT
LAW



AGRICULTURAL
LAW



9 PARKHOUSE ROAD | MINEHEAD | SOMERSET | TA24 8AB

BRIDGWATER | WELLINGTON | MINEHEAD | YEOVIL | MARTOCK | EXETER

AMICUSLAW.CO.UK | 01643 701 888



Standard sizing of overlap panels in stock

Bespoke gates

Bespoke Sheds/Timber Buildings

Dumpy bags of seasonal logs £45 per bag

Fire wood from £20 a bag



Milverton Sawmill
EST. 1946

Bespoke Sheds . Fencing & Garden Supplies



01823 400244 sales@milvertonsawmills.co.uk Station Road, Milverton, Somerset, TA4 1LD

Books Bought

*Local-interest
Countryside &
Country-Sports
Book Collections
especially wanted.*



*Also Academic and general
libraries bought.*

Valuations undertaken

**Rothwell &
Dunworth**

Tel: 01398 323169

Email: info@rdbooks.co.uk

Tackling the Tech.

Ever wanted help mastering emails, web searches, FaceTime calls, downloading, saving your pictures, Social Media etc? Come along to an IT Workshop at Brushford Parish Hall. If you have a laptop or tablet you can bring it along, but if you have a desk PC don't worry. The first Workshop will be free, while the trainer gauges the needs of the group. After that it will be £5 per person for the 1 hour group session. If you are interested please email Simon Rous S.rous@ashfords.co.uk or call him on 01398 323508 so he can get an idea of numbers and if there are enough people interested to warrant arranging a date.

Art Group

A small group of beginners and returners to drawing and painting are meeting every Wednesday at 5pm at Brushford Parish Hall. We are led by Jan Woodcock (winner of the Brushford is Beautiful Art Competition in 2019) and it costs £4 per session. Please email her on tigiman44@gmail.com to join us.

Men Get Cooking and Let's Get Cooking

A 6 week course in basic cooking (with tips on shopping on a budget and nutrition), aimed at men over 55 and supported by the Somerset Fund and Western Power Distribution which has allowed us to keep the price down to an amazing £36 for the whole course. Course Tutor is Debbie Jansen, qualified and experienced in cooking, nutrition and small group teaching. This will be an extension of the small group learning experience to include all ages and sexes. If cooking meals for yourself or family feels daunting, contact Debbie to find out when the next course is available: debbiejansen07@googlemail.com. Let's Get Cooking depends on the support of local people shopping at the Co-op. Go to <https://membership.coop.co.uk/causes/40598> to support this activity when you shop.

Live Television Coverage - Guinness Six Nations Rugby

on the Big Screen at Brushford Parish Hall All events will be shown from the kick off time. Bar with real ale and snacks. Saturday 7 March:

- *14:15 - 16:45 Ireland vs Italy followed by
- *16:45 - 19:00 England vs Wales

Saturday 14 March:

- * 14:15 - 16:45 Wales vs Scotland followed by
- *16:45 - 20:00 Italy vs England
- * 20:00 - 22:30 France vs Ireland

**Bampton
Framing**

Bespoke
Picture Frames

Locally Made

Colin Williams

07954 846452

www.bamptonframing.co.uk
colintheframer@gmail.com

Dulverton Films



Dulverton Town Hall

Friday March 6th

THE GOOD LIAR (Cert 15)

Director: Bill Condon 109 mins

Career con artist Roy Courtney (Ian McKellen) can hardly believe his luck when he meets well-to-do widow Betty McLeish (Helen Mirren) online. As Betty opens her life and home to him, Roy is surprised to find himself caring about her, turning what should be a cut-and-dry swindle into the most treacherous tightrope walk of his life.

Friday March 20th

ONCE UPON AT TIME...IN HOLLYWOOD (Cert 18)

Director: Quentin Tarantino 161 mins

Actor Rick Dalton gained fame and fortune by starring in a 1950s television Western, but is now struggling to find meaningful work in a Hollywood that he doesn't recognize anymore. He spends most of his time drinking and palling around with Cliff Booth, his easy-going best friend and long-time stunt double. Rick also happens to live next door to Roman Polanski and Sharon Tate, the filmmaker and budding actress whose futures will forever be altered by members of the Manson Family. Star studded cast includes Leonardo DiCaprio, Brad Pitt, Al Pacino, Damian Lewis and lots more!

Friday April 10th

FORD V FERRARI (Cert 12A)

Director: James Mangold 152 mins

American automotive designer Carroll Shelby and fearless British race car driver Ken Miles battle corporate interference, the laws of physics and their own personal demons to build a revolutionary vehicle for the Ford Motor Co. Together, they plan to compete against the race cars of Enzo Ferrari at the 24 Hours of Le Mans in France in 1966. A film with poetry, scientific brilliance, hard work, human genius, and great fun all mixed together.

Friday April 24th

KNIVES OUT (Cert 12A)

Director: Rian Johnson 118 mins

When renowned crime novelist Harlan Thrombey dies just after his 85th birthday, the inquisitive and debonair Detective Benoit Blanc arrives at his estate to investigate. From Harlan's dysfunctional family to his devoted staff, Blanc sifts through a web of red herrings and self-serving lies to uncover the truth behind Thrombey's untimely demise. A stellar ensemble including Daniel Craig, Christopher Plummer, Michael Shannon and Chris Evans.

Tickets –Dulverton Films members £3, non-members £4.50, students, accompanied by an adult, £2.50. (Tickets may be available on the door - £4). Book in advance at Dulverton Post Office (Tel: 01398 323474) or email janaross2003@yahoo.co.uk. Bar open from 7pm.



Exford Village Hall
Friday 3rd April
Doors open at 7pm
Eyes Down at 8pm.

Raffle, refreshments,
Great prizes, families welcome

Invite you to:



On Saturday 14th March

7pm for 7:30 start
Exmoor White Horse Inn, Exford
Teams of up to 6

(To be booked in advance)
£11 per person (inc. supper)

To book your team please call or message Will
on 07817 708052
Or call The White Horse on 01643 831229

The royal oak

EXMOOR



*Traditional Bar Food and Restaurant Dining
with 4 Star Country Inn Accommodation*



Bar and Restaurant

The Royal Oak was originally a 12th Century farmhouse and has a fascinating history. Today it's a traditional Country Inn with 4 star accommodation.

Offering the highest quality bar/restaurant dining 7 days a week and superbly appointed bedrooms.

Open from 10am every day, all through the year.

Royal Oak Exmoor - Winsford

Exmoor National Park - Somerset - TA24 7JE

01643 851455 - www.royaloakexmoor.co.uk



DULVERTON GARDENING CLUB

19th March A.G.M. & CHEESE & WINE

Followed by a talk by KATHERINE CROUCH

On

"THE SEEDED GARDEN"

Doors open at 6.15pm for 6.30pm start

16th April A talk by

ANNIE PREBENSEN

On

"MY CHELSEA GARDEN"

Doors open at 7.00pm for 7.30pm start



DULVERTON STARLIGHT

The annual Dulverton by Starlight Public Meeting will be held on Tuesday 10th March at 7pm in the Lower Town Hall, Dulverton.

The meeting is open to all: shop owners, residents, visitors, volunteers, anyone who would like to help or join the committee. We want to hear your ideas: what you like about Dulverton by Starlight and do you have any suggestions to include for future events. Dulverton by Starlight is the town's premier event, a winter celebration signalling the start of the festive season. The present committee are a small but dedicated band of locals and business owners who work throughout the year to put the event together.

Please come along to the meeting if you are able to give a couple of hours a month to join our easy-going committee

to help with the planning or are able to offer help on the day.

If you are unable to attend the meeting but would like to register your interest, please email info@dulvertonbystarlight.co.uk. We look forward to seeing you on 10th March.

The Dulverton by Starlight Committee

The Skilgate Village Hall

Big Breakfast



Sunday 26th April

at

Skilgate Village Hall
between 9 am & 12 Noon



for more detail

Phone Shirley Julian on 331031 ~Tickets £8

Dan Stone Accountancy

CHARTERED ACCOUNTANT

- Sole Traders, Partnerships and Limited Companies
- Accounts and Tax Returns
- Business Start Ups
- Making Tax Digital Support
- Charities and Not For Profit

NOW TAKING ON NEW CLIENTS

Contact Dan for a free initial consultation

Telephone: 01643 822305 Mobile: 07970 304179

Email: d.stoneaccountancy@btinternet.com

www.danstoneaccountancy.co.uk

Exmoor's Local
Accountancy Service



ICAEW
CHARTERED
ACCOUNTANT



Helen Blackman

Archivist and wordsmith

Genealogy and family history

Advice on the care and conservation
of historical and family papers

Dr.Helen.Blackman@gmail.com
<https://drhelenblackman.wixsite.com/archives>

Tel. 07443 655803

REGIS ROOFING & BUILDING

- Damp & Condensation Problems Solved!
- Loft Conversions
- Painting & Decorating
- Timber Frame Structures
- Kitchens & Bathrooms
- Roof & Chimney Repairs

Phone Jason on
01643 705540
jfmullett@aol.com

Community Flood Group

As many of you will be aware, Dulverton has in the past suffered from floods, and I'm sure will unfortunately do so at some stage in the future. In the aftermath of the December 2012 floods, a Community Flood Action Group was set up to assist residents when needed. We are asking for more volunteers to join us. What's involved I hear you ask? Well, we help in whatever way we can: moving furniture to higher areas, filling or moving sandbags, building sandbag walls, assisting residents where we can - while always ensuring we keep ourselves safe.

If you feel you might be prepared to help, please contact Chris Dubery 01398 323474, or email christine.dubery@dulvertontowncouncil.co.uk



Gary Cooper 'Music on Exmoor'

Organ Recital on historic T.C. Lewis

1872 instrument

Sunday 29th March, 3pm

Church of

St Mary the Virgin,
Brompton Regis
£10 on the door
(Under 30s - free)



eco re-solution

ditch the plastic & ditch the chemicals

**Every Friday
Dulverton Town Hall Market**

S.E.S.I CLEANING PRODUCTS
(vegan, cruelty free & biodegradable)

Price List

Washing up Liquid (spiced Ginger) £2 per litre

Bio Laundry Liquid (unfragranced) £3 per litre

Fabric Conditioner (Cologne) £2 per litre

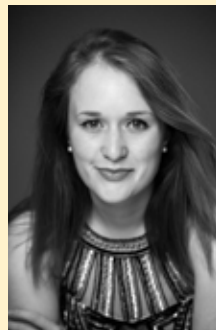
All Purpose surface Cleaner (Lavender & Rosemary) £2 per litre

Toilet Cleaner (Lotus & Seaside) £2.40 per litre

Window & Glass Cleaner (Lotus & Seagrass) £1.50 per litre

Cream Cleanser (with fragrance) £3.00 per litre

**plus many other zero waste
& organic products
for the home**



'Music
on
Exmoor':
Johanna
Harrison
- Vocal

Recital

Sun Apr 26th, 3pm

All Saints' Church,

Dulverton

Music by Haydn & Verdi

£10 on the door (U30s - free)



KEITH
FARMER
 BUILDING SERVICES LTD



KEITH FARMER BUILDING SERVICES LTD

- ARCHITECTURAL DESIGN • PLANNING & DEVELOPMENT •
- BUILDING REGULATIONS • BUILDING CONTRACTORS • PROJECT MANAGEMENT •
- New Builds/ Conversions/ Extensions/ Commercial/ Industrial/ Listed Buildings •

FREE INITIAL ADVICE AND ESTIMATE

01823 666223



www.keithfarmer.co.uk



JOHN FRENCH

(Plumbing and Home Improvements)

Karlsruhe House, Winsford, Minehead, TA24 7JE.

All aspects of plumbing carried out at affordable rates.

Full Bathroom and Kitchen installation service.

(Call for a free estimate)

**No job too small.
 Tel: 01643 851215**

SPRINGFIELD ENGINEERING

East Anstey

Tel. 01398 341331 Mob. 07964 010466

Springfield Engineering offer a full range of services

- ⇒ Tractor, Trailer, 4x4's Repaired
- ⇒ Machinery servicing and repairs
- ⇒ Hydraulics
- ⇒ Welding and Fabrication
- ⇒ Quad bike servicing and repair
- ⇒ Vehicle Diagnostics service and repair
- ⇒ Auto Electrical work Trailer electrics
- ⇒ Garden machinery servicing and repair
- ⇒ Industrial control panels 3 phase Motor control



Upton Coaches Day Excursions and Theatre Trips 2019.



Day Excursions 2020

Highfield Garden World & Painswick Rococo Gardens

Snowdrops - Tuesday 11th February 2010

Adult £23.00pp Senior £22.00pp

Gloucester Quays Shopping Outlet – Thurs 20th Feb

2020 £16.00pp

**Please call us
or visit our website
to request a
2020 brochure!**

Theatre Excursions at Bristol Hippodrome

- **We Will Rock You** – Saturday 21st March 2020
2.30pm performance £73.00pp/£56.00pp
- **The King and I** – Thursday 26th March 2020
2.30pm performance £77.00pp
- **Mamma Mia** – Saturday 6th June 2020 2.30pm
performance Bristol £75.00pp
- **Dream Girls** – Saturday 19th September 2020
2.30pm performance £72.00pp
- **Strictly Ballroom the Musical** – Saturday 7th
November 2020 7.30pm performance
£59.50pp
- **Snow White** – Wednesday 30th December
2020 2.00pm performance
Adult £44.50pp Child £40.00pp

Pick up Points Include – Minehead, Watchet, Williton,
Bampton, Tiverton, Sampford Peverell, Wellington and
Taunton

Tel: 01398 371 271 | Email: info@uptoncoaches.co.uk | www.uptoncoaches.co.uk



exmoor trees

Native trees and shrubs for
hedge and woodland

Call us now: 07971 580057

www.exmoortrees.co.uk

**HELEN PORTER
CONSTANT AS THE WORLD**



**SATURDAY 14TH MARCH AT 7.30
ALL SAINTS CHURCH DULVERTON**

Tickets £10

Advance bookings from Dulverton Post Office, the Tantivy

For further information phone 01398 323462

LAURA HARDING
MCTIMONEY CHIROPRACTOR



Offering chiropractic
& remedial massage
appointments in
Dulverton

Appointments available on
Monday, Tuesday, Wednesday,
Friday and Saturdays

Contact Laura:
07980 059807

laurahardingdc@gmail.com

 @LauraHchiropractor

Step-Ahead 
Foot Health Practitioner

LYANNE MOTTERAM

Do you suffer from corns,
callus -hard skin, fungal
nails, athletes foot or
ingrowing toenails?

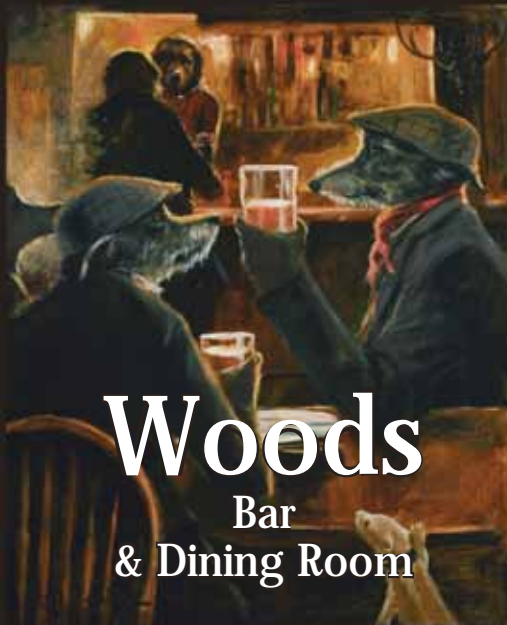


Foot pain? Not sure what it
is? Or just want to maintain
good foot health?

Appointments available on
Mondays in Dulverton

Contact Lyanne:
07703 627813

Exmoor Wellness Clinic, 36 High Street, Dulverton TA22 9DJ



Woods
Bar
& Dining Room

Good Pub Guides
National Wine Pub
of the Year
2010-2018

Situated in the beautiful
Exmoor National Park at
4, Bank Square, Dulverton,
Somerset, TA22 9BU
01398 324007

woodsdulverton@hotmail.com
woodsdulverton.co.uk

Jackie Kelly
Fitness

Enjoy Fitness
classes, fun for all
ages and abilities

Boxercise - Bootcamp - Kettlercise - Fitness Pilates

Monday – 9.30am Body Conditioning,
10.30am Fitness Pilates

5pm Fitness Pilates, 6pm Fitness Pilates,
7pm Boxercise

Tuesday - 10am Legs, Bums & Tums,
6.30pm Kettlercise

Wednesday – 9.30am Fitness Pilates
12pm Body Conditioning

Thursday - 6pm Kettlebell HIIT,
7pm Men's Fitness Pilates

Friday - 6am Bootcamp

9.30am Boxercise, 10.30am Fitness Pilates

Saturday - 8am Circuits/Legs, Bums & Tums

Fitness Pilates, block booking only 6 week course
All other classes pay as you go

Booking is essential

Jackie Kelly Fitness, Parish Rooms, Rosemary Lane.
Dulverton TA22 9DP

Email: jackiekelly416@gmail.com

Tel: 01398 323959 Mob: 07487 711445



FITNESS CLASSES FOR ALL

with Linda London



Mon 7.00pm Dulverton Town Hall	Over 50's - Use it or Lose it (for the very active)
Wed 10.00am Brushford Parish Hall	Move, Tone, Chat & Go (for keeping active)
Wed 11.15am Brushford Parish Hall	Easy Exercise for the Older & Wiser (for the less active) NEW
Thurs 6.00pm Brushford Parish Hall	Over 50's - Tone, Stretch & Groan (for keeping active)
Thurs 7.15pm Brushford Parish Hall	Step, Tone, Sweat & Stretch (for the very active)

All classes £4.00

Tel: 01398 323393

Email: linda@lindalondon.plus.com



Naturally Fleurish
inspired by nature

Bespoke floral designs
for any & every occasion

07715 296 286

naturallyfleurish.co.uk

19 High Street Dulverton Somerset TA22 9HB

NEW SCHEME URGES SHOPPERS TO BUY LOCAL

A new initiative to highlight the merits of buying local has been launched in Exmoor National Park. The National Park Authority and Visit Exmoor are working together to support local producers and promote how the fine produce sustainably grown, reared and prepared within Greater Exmoor benefits the landscape and its communities.

Signs making it easier for shoppers to identify local produce are being proudly displayed in stores to shine a light on the region's producers and how buying local benefits the environment, while delivering food that is more tasty, nutritious and sustainable.

Sarah Bryan, Chief Executive of Exmoor National Park Authority, said: "Despite their wild appearance, Exmoor's landscapes have been shaped by human interaction with nature over thousands of years. Many local producers here are small-scale farmers championing low-impact approaches that work with, not against nature. Much of the livestock is grass-fed, making our local lamb and beef tastier and healthier, as well as more sustainable. With fewer food miles and in turn less packaging, switching to local produce can help reduce your carbon and plastic footprint, whilst supporting our rural communities."

The Exmoor Hill Farming Network, Edible Exmoor (www.edibleexmoor.co.uk) plus numerous local shops and retailers have already got behind the campaign, with Wheddon Cross Central Convenience Store and Roadwater Community Shop among the first to display the new branding.

Tony Howard, proprietor of The Village Shop and Tea Rooms at Withypool, said: "We're delighted to be able to support this initiative by the National Park. As well as selling to those visiting the area, we have a strong and loyal customer base who are always pleased to support local producers, but more can be done, and highlighting Exmoor produce in this way is a step in the right direction."

Sarah Campbell at Timberscombe Post Office and Store said: "There's already been a really positive response to the new promotional material in our shop. I'm sure it will make our customers think carefully and more likely to choose local produce."

In December, grass-fed Exmoor lamb was the winner at blind-tasting event at Woods restaurant in Dulverton. Emma Thomasson from Visit Exmoor, who supported the event, said: "When visitors come to the area, experiencing the finest seasonal food and drink can be a big part of their cultural adventure, connecting them with the landscape they see around them and helping create memorable experiences.

"Joining the dots of where our food comes from is an important way of deepening people's understanding and kindling a life-long love of the area sure to keep them returning. With locally-produced meats, fresh, seasonal fruit and veg, artisan breads, sweet treat confectionery and award-winning gin and cider all on offer, it's not hard to see why!"

The 'Produced in Exmoor' campaign is part of the wider #EatExmoor project, which aims to support producers, build strong commercial relationships between producers and local businesses and help boost Exmoor's reputation as a great food destination. Find out more at: www.exmoor-nationalpark.gov.uk/eat-exmoor



**Mary Wilkinson
McTimoney**
Qualified Practitioner
DC AMP

GENTLE, WHOLE BODY TREATMENT
for SPINAL RELATED PROBLEMS

- Back Pain ●
- Sciatica ●
- Neck & Shoulder ●
- Whiplash & Headaches ●

Also Qualified McTimoney Animal Therapist
MAA RAMP

Horses, Dogs, Cats, Farm Animals

Higher Putham
Wheddon Cross TA24 7AS

marywilkinson.therapy@gmail.com

01643 841660

S.S. ROOFING EST 30 years **SPECIALISTS**

Roofing & Leadwork Specialists

*Slating - Tiling - Leadwork - Flat roofing
Cedar shingles - Chimney works
Fascia/soffits Guttering
Residential - Domestic - Conservation
Heritage - Listed*



Independent family run Roofing
& Lead works specialists.
All sizes of projects.

01884 252768

ssroofingspecialist@hotmail.co.uk
www.ssroofingspecialists.co.uk

G.S. GARDEN MACHINERY

Sales and Repairs of all Garden Equipment

Agents for:

Makita

Makita



Castel and
Lawn King
Ride Ons and
Mowers



CASTELGARDEN

LAWN-KING



Tanaka Brush
Cutters and
Hedge Cutters

Tanaka

**New and Secondhand
Friendly Service**

Units 1 & 2A, Carnarvon Arms Garage,
Brushford, Dulverton, Somerset TA22 9AG.

Tel: 01398 32 44 55 Email: gsgardenmachinery@gmail.com



Nikki Routledge
Cert CBS
Human Bowen
Practitioner

Gentle and light therapy suitable for musculoskeletal pain, asthma and allergies, migraines, MS and other chronic conditions in adults, infant colic and bed-wetting or growing pains in children.

Tel: 07890 968 115
www.mimi.me.uk



Rupert White
INTERIORS



- Full Design Service
 - Project management
- Comprehensive range of fabrics
- Curtain making
- Upholstery
- Lighting
- Accessories
- Sourcing
- Floor coverings

Rupert White Interiors
The Stables, Bampton, Devon, EX16 9LA

Tel: 01398 332444
 enquiries@rupertwhiteinteriors.co.uk
 Please ring to make an appointment

SEWⁿSEW

Belinda Hopkins

01398 324 053

sew_n_sew@hotmail.co.uk

www.sew-n-sew.co.uk

Quality bespoke made to measure curtains, roman blinds and cushions.

Curtains adapted and altered to fit

Curtain poles, tracks, venetian & roller blinds

Range of fabrics available including iLiv and Clarke & Clarke

Clothing alterations & repairs



Simonsbath Festival
Presents

Two Poets in Performance

Saturday 14th March 2020

6.30pm Congregational Church Hall,
Millhams Lane, Dulverton.

Adults £10 Children under 16 FREE
Bar with wine and soft drinks

An evening with prize winning poets
Richard and Sarah Westcott who have had
their work
published in
anthologies,
magazines, on
beer mats
and the
sides of
buses.



Tickets available from www.simonsbathfestival.org.uk or call
Marian Lloyd on 01643 831451

LAURENCE J. W. BECKFORD

MONUMENTAL MASON & CARVER



SLATE MEMORIAL



TRADITIONAL HAND
CUT LETTERING



MEMORIAL BENCH

HEADSTONES and MEMORIALS

Individually designed and hand carved in Dulverton

Refurbishment of existing headstones and memorials
including re-fixing, painting and gilding

0772 4452 961

www.beckfordsartworks.co.uk laurence.beckford@sky.com

Full member of the Master Carvers Association (M.C.A)

The Arts Society Exmoor

Upcoming lectures - March to June 2020

2nd March - George Stubbs and the Tyrants of the Jungle with Amina Wright

6th April - English Women and the French Revolution with Karin Fernal

11th May - Beethoven at 250 with Sandy Burnett

1st June - Sunken Treasures of the East with Professor Marie Conte-Helm

All lectures are held in Brushford Parish Hall. They start at 2.30pm and run for an hour, followed by tea, coffee and a catch up with fellow members.

PLUS - Special Interest Day: 23rd March - The Elizabethan and Jacobean Country House with Dr David Bostwick (members £25.00, non-members £30.00) 10.15am - 3.15pm approx. Brushford Parish Hall

Fur further information on membership and to attend any of these events, please call the Membership Secretary on 01398 331587



Three Atop Woodland Services

Tree Care

Reductions - Crown Lifts - Removals

Woodland Management

Felling - Coppicing - Planting

Portable Chainsaw Milling

Posts - Repurposing - Planks

Nick Hosegood

Phone:01984 641 330

Mob:07870 917 632

threeatop@outlook.com

www.threatop.co.uk

ENGLISH TUTOR - Karen Murphy-Barnes

- Qualified English Teacher
- Classroom teacher for KS3 and GCSE English for 25 years
- Head of English for 13 years

Available for KS3 and GCSE English Tutoring £25 per hour

Contact me on: kraj_winch@outlook.com or 07900 380383



TJ landscape services
www.tjlandscape.co.uk

Garden Design & Landscape Construction

- Fencing • Patios • Paths • Ponds
- Decking • Stone Walls • Turfing

Tim Jackson
31 Lower Meadow Road,
Minehead, Somerset.
TA24 6AW

mob. 07748644376
email. tim@tjlandscape.co.uk

TONY BROOKE CARPETS & FLOORING

CARPET ■ VINYL ■ FLOTEX
NATURALS ■ SAFETY FLOORING
LVT ■ RUGS ■ RUNNERS ■
MATS & MORE!

- Free estimating and planning
- Expert advice and fitting
- Over 25 years experience
- Home-choose service
- Re-stretches, re-adaptions and repairs
- Great deals on roll stock and remnants
- Already bought a carpet? We'll fit it!
- **Price Promise** - we won't be beaten



Tel: 01984 632206

Visit our showroom

Units 2 - 4, Roughmoor Industrial Estate,
Williton, Somerset TA4 4RF

www.tonybrookecarpetsandflooring.co.uk



Plastering Renovations
Stonework New Builds
Extensions Lime Plastering
Groundworks Restoration
Treatment plant installation

t: 01398 323 745 m: 07833 376 737 www.lcbuildingcontractors.co.uk



Ele Davidson

Painter & Decorator
North Devon Area

07775 600298

eledav1@btinternet.com

 [painterdecoratorcommissions](#)



Exmoor garage LTD

**Car, Commercial, Agricultural, Plant,
Vehicle repairs**

Kevinnorman01@brinternet.com

Unit 8 Global Park Bampton

Tiverton Devon Ex16 9NG

01398 332446 / 07753261574



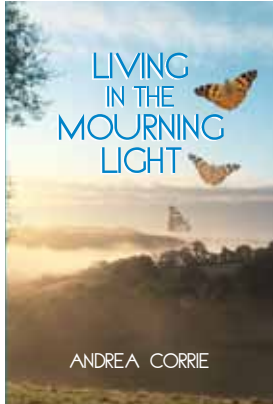
Exmoor News is published every two months,
3,000 copies printed (covering southern Exmoor) and also
published online at www.exmoornews.co.uk

For more information E: exmoornews@gmail.com T: 07497 914441

Living in the Mourning Light

By Andrea Corrie

What is it like, living in the mourning light?



This is the question asked and answered by Bampton-based author Andrea Corrie in her second book, *Living in the Mourning Light*. The book, part memoir, part grief resource, f u r t h e r

describes her path after the loss of her 19-year-old son James to accidental drowning in the River Thames at Kingston in 2005. Every bereaved person knows the shock, despair and horror of early grief.

What do you do with your emotions? How do you bear your loss?

Andrea's outlet is to write out her anguish, to put into words the worst of her feelings in an attempt to better understand them and ultimately to move from the darkness into the light, which she terms the *mourning light*. Initially written for bereavement support forums, Andrea's musings and articles led to the publication of *Into the Mourning Light* in 2014, which focused on the first eight years of loss. The book came to the notice of the RNLI and she became involved with their Respect the Water campaign, an annual national campaign which focuses on the dangers inherent in water. Andrea continues to support

the campaign and she says, "I cannot emphasise enough that any body of water, innocuous looking though it may be, poses a risk to anyone who enters it, particularly if that entry is accidental. We are fortunate to live in a beautiful area that has large bodies of water locally: for example, Wimbleball Lake, the Tiverton canal and the rivers Exe and Barle. They are no less dangerous than the tidal river Thames or the open ocean off the Devon coast. I say this not to be a killjoy, but to raise to the forefront of people's minds that they should always take care and Respect the Water."

Readership of *Living in the Mourning Light* is not restricted to bereaved parents, but contains much to enlighten anyone who is grieving the loss of a loved one, or supporting them. The book challenges you to think about your own responses to grief and loss and reassures you that the mourning light offers a safe, optimistic and joyful place in which to live, despite the absence of your loved ones.

Of her writing, Andrea says, "I am proud to have produced two books that are not misery memoirs but aim to uplift, inform and inspire readers with a sense of hope for the future as well as providing a lasting legacy for my dearly loved son James. I decided to self-publish this time round and I'm very grateful for the patient help I received from the Exmoor News in refining the final manuscript ready for printing."

Living in the Mourning Light and *Into the Mourning Light* are available to purchase at www.amazon.co.uk/dp/1916271804/

Andrea's positive blog on grief and living as a bereaved parent can be found at <https://andrecorriesblog.wordpress.com>

Respect the Water Campaign:

<https://rnli.org/safety/respect-the-water>



For all your scaffolding needs No job too big or small

From chimney stacks to temporary roofing

07562 775088

exmoorscaffolding@gmail.com

TIVERTON & TAUNTON FLOORING LTD

39 Bampton Street & William Street Warehouse
Tiverton, Devon, EX16 6AH

HAL WHITE

Mobile: 07770 637 368

01884 257 144

TRAX

LAND & WATER MANAGEMENT



- Water Treatment/Filtration
- Borehole & Spring Water
 - Pumping Systems
- Water testing/sampling

- Excavations & Groundworks
- Robocut for topping brambles/bracken etc on steep ground & Rotavator attachment
- Site prep and clearance



CALL NOW FOR A FREE QUOTATION
EXMOOR AREA

01643 851548 / 07817713693

www.traxgroundworks.co.uk

Roger L Hammond Architectural Design Services

Free initial consultation
Feasibility studies and design advice
Measured survey, detail drawings
Planning and building regulations applications
Extensions, barn conversions and new build
Listed buildings and conservation work
Specifications prepared
Tendering, procurement and supervision
Residential and commercial
35 years experience

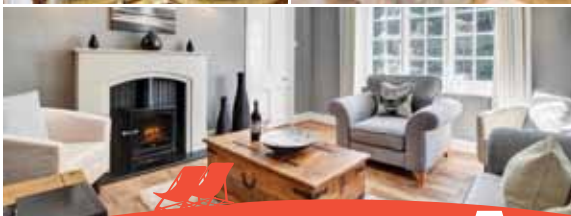
Reasonable rates

Tawny, 8 Great Meadow, Dulverton,
Somerset, TA22 9DT
Tel/Fax: 01398 324644, mobile 0777 906 0969
e mail; rl.hammond@btinternet.com
website;www.rlhammond-architecturaldesign.co.uk



*Trust your local
holiday property experts*

- Competitive commission rates
- Local, friendly, expert advice and support
- Comprehensive marketing
- Fully managed services to suit your needs
- Mobile-optimised website
- Over 97% of our owners would recommend us - find out why...



Request a FREE homeowner pack online today!

01271 813777 marsdens.co.uk



THE COPPER KETTLE Tea Rooms & Gardens



In the Heart of Dulverton you will find the wonderful quintessential Copper Kettle Tea Rooms. Make use of our fantastic gardens in which dogs on leads are made most welcome

Please pop in for a welcome break. We open at 0930 till 5pm daily, Sundays we will be open seasonally from 1030 for when you deserve a rest and a cup of tea or a full cream tea served with lashings of fresh clotted cream.



21 Fore Street
Dulverton
TA22 9EX
01398 323 697



EDWORTHYS

CARPET, WINDOW and OVEN CLEANING

30 Chapel Street, Dulverton, Somerset TA22 9HF



- **Patio Driveway and Decking Cleaning**
- Gutters ■ Facias ■ Roof Cleaning ■ Upholstery

Please contact Tom for a free quotation.

Professional, Reliable, Friendly and Competitive Pricing.

For a free quotation, please call us on 01398 323 696 and we will happily arrange a date and time to suit you.



01398 323696 07837 598326 (oven and decking)
07984 057527 (carpets, windows and roofing)

Craftsmen you can rely on, Quality you can trust...



01984 629131
07788 810576

*"Recognised Specialists
In Lime Rendering,
Lime Plastering &
Building Restoration"*



**WOODLOUSE
LIMITED
CONSERVATION**



**Lime Plastering • Lime Rendering
Traditional Damp Management
Solutions • Cob Work • Stonework
Lime Pointing • Fireplace Restoration**

"Restoring properties throughout Somerset & Devon"

www.woodlouseconservation.co.uk



DRINK : DINE : STAY



Set in its own 40 acres, 16th century Tarr Farm Inn nestles above Tarr Steps near Dulverton. Wooded valleys, moorland with stunning views of Wales, Devon and Dartmoor are nearby. Tarr Farm is a great base to explore Exmoor and North Devon.



Each of our nine rooms has been designed to provide every modern comfort. Fresh, contemporary, generously proportioned, there's little luxuries such as locally made organic bath products, power showers, full size baths, the fluffiest bathrobes and towels and Egyptian cotton sheets.

We are proud to use local produce such as Exmoor lamb, Devon Red Ruby beef, fresh Cornish seafood and local venison and game. All provide real local flavour. Our chefs serve classic dishes with a fresh contemporary twist with influences from all over the world.



Tarr Farm Inn

Tarr Steps, Dulverton, TA22 9PY
Telephone: +44 (0)1643 851507
Email: enquiries@tarrfarm.co.uk

tarrfarm.co.uk

Life Mobility Showroom



**VAT
EXEMPT
SAVE
20%***



Vehicle Adaptions For Drivers and Passengers



Vehicle Hire

Wheelchair Accessible Vehicles **From £28.57 per day†**

*Qualifying disabled customers/vehicles could save 20% (VAT). † Vehicle Hire is self insure only; Terms and Conditions apply; Please contact for full details; £28.57 if VAT exempt (£38.28 if not), based on 7 day hire.



Adaptacar

MOBILITY SPECIALISTS

Pathfields Business Park,
South Molton, EX36 3LH

www.adaptacar.uk

Tel: 01769 572785

My Favourite Tree

by Ema Rowe

A couple of years ago I was walking with my dog when I had a realisation. We are asking children to look after and protect the nature around them and yet the majority of them would not be able to name a species of tree, let alone their favourite. But they could name a football team, favourite film or game console character. None of which helps to keep them alive.

Don't get me wrong. I'm not one of those 'the children of today....' types. Completely the opposite. I have worked outside with children (Wild Wellies) for nearly ten years and every week the children surprise me with their inquisitiveness and knowledge. My observation leaves me with the question: Why?

Whatever the reasons, I wanted to help

make that change in a practical way.

And so my interactive book 'My Favourite Tree and the Beech's Story' was created. It is a book that allows you to celebrate your tree - wherever that may be: a wood, a park, your garden or by the road - with photos and activities. Plus a poem story which starts with the Beech and the animals and insects which are part of its life cycle.

Thanks to Exmoor News I am at the compiling and proof reading stage, and looking forward to finding a publisher or agent.

Exciting times.



Exmoor Landscaping



Local and reliable

Clearance and ground works

Stonewalling and steps

Patios and ponds

Fencing and treework

Turf supplied and laid



Tel: 01984 640530

or Mobile: 07974 141790

or visit www.exmoorlandscaping.co.uk



MADE ON
EXMOOR

ARTISAN GIN



www.exmoordistillery.co.uk

01398 323 488

NIMBLE FINGERS



Trading since 1994

23 Fore Street, Dulverton Tel: 01398 323688

Tapestry Kits & Loose Canvases - Elizabeth Bradley Kits

Cross Stitch Kits & Charts - Free Style Embroidery Kits

Anchor and DMC, Needle Craft Yarns, Knitting Yarns

Selection of dress fabrics including Liberty cotton prints

Accessories for most embroidery needs

Wide range of Haberdashery for Home Sewing and Clothes Repair

Ribbons, Tapes, Elastics, Bindings, etc - all sold by the metre

Buttons - sold singly

Silk Flowers, Floral Art Accessories

OPEN - Monday to Saturday 10.30am - 5pm - closed Thursdays

SOUL WORKS

Magdalena Harding

Past Life
and Inter-Dimensional
Wisdom Healer



Free Drop-in Taster Sessions

(most) Fridays 1-3 pm

Fishers Mead Community Centre

Full private sessions available at home

Tel: 01398 323 785

Mob: 07929 761



No.4 Brook st. Bampton
EX16 9LY

No.4 is a non-profit making co-operative
for promoting local artists & craftspeople

Pottery, textiles, jewellery, paintings,
gifts, cards & prints. All of our pieces are
hand-crafted originals or are printed from
original artwork

We are next door to the Toucan cafe

Opening hours:-

Tuesday -Thursday 11-4 Friday 11-3

Saturday 10-1

www.no4bamptonarts.co.uk



Therapies with Pippa Canney DipCNM MAMP ITEC MCThA
Nutritional Therapy and Naturopathy – health and wellbeing from the inside out. Digestive issues, cancer support, eczema, depression, high cholesterol, insomnia, arthritis, infertility, diabetes, obesity, recurrent infections are a few of the things that can be helped.

Bowen Therapy

A gentle form of hands on therapy suitable for all ages. Releases blockages to rebalance and regain function.

Reflexology

Specialist foot massage to help the body regain function. Great for stress/reproductive/digestive issues.

Reiki Healing

A settling and reassuring therapy helpful for times of distress or imbalance. Emotionally supportive. Gentle hands on healing.



Wellbeing and Skin Care
 The Old Blacksmiths, Bridge Street
 Dulverton TA22 9HJ
01398 324155

9 Orchard Road
 Minehead TA24 5JY
www.pippacanney.co.uk
pippacanney@gmail.com
07779 748315

**VAUXHALL
 TRADE UP
 CAMPAIGN**

**FROM
 £4000 SCRAPPAGE
 ALLOWANCE**
**FROM
 £3000 PART EXCHANGE
 ALLOWANCE**



Selected models only. Subject to availability. T&Cs apply



We are acting as a credit broker and not a lender. We can introduce you to a limited number of lenders. Models shown Mokka X Active, Crossland X Elite and Grandland X Sport Nav. Ts&Cs and restrictions apply. Available on Conditional Sale and Personal Contract Purchase only Subject to status 18+ Vauxhall Finance CF15 7YT

Limited period only. Subject to terms & conditions

Westcars of Tiverton

11 Blundells Road, Tiverton Devon EX16 4DB. 01884 257143 www.westcars-tiverton.com



Exmoor Young Voices Charity

Exmoor Young Voices is a charity that advocates for young people on the moor. An initiative of Exmoor National Park, our organisation was set up to give young people a chance to voice their concerns regarding housing, planning, employment, transport and connectivity.

Currently, we have over 80 members and are supported by several local authorities and housing associations. Our meetings are held quarterly at The Rest and Be Thankful Inn, Wheddon Cross. We have also succeeded in hosting a summit with representatives from the councils, housing associations and Exmoor National Park to discuss how they can help, support and make changes for young people on the moor. We are currently in the process of securing pledges.

EYV is going from strength to strength and our voices are being heard by local councillors here on Exmoor, all the way to MPs in Westminster!

If you are interested in joining EYV, we'd love to see you at our next meeting. Keep an eye out on our brand new website and social media pages for more information. We're also keen to hear from anyone who has experienced difficulties with any of the issues mentioned above and would be happy to help form a case study.

Learn more about EYV and get in touch:

exmooryoungvoices@hotmail.com www.exmooryoungvoices.org
www.facebook.com/exmooryoungvoices www.twitter.com/exmyoungvoices
www.instagram.com/exmooryoungvoices

Bampton Heritage and Visitor Centre is delighted to present its Annual Heritage Lecture 2020- all welcome!

Wednesday 25th March 7.30pm at St Michael and All Angels Church, Bampton

'The Green Man' by speaker: David Bostwick

Enquiries to: bamptonheritage@btinternet.com Phone: 07967 277738

David Bostwick is an Arts Society lecturer and cultural historian of the Medieval, Tudor & Stuart periods. A Green Man is a sculpture or other representation of a face surrounded by or made from leaves. Branches or vines may sprout from the mouth, nostrils, or other parts of the face and these shoots may bear flowers or fruit. Commonly used as a decorative architectural ornament, Green Men are frequently found in carvings on both secular and ecclesiastical buildings – but why?

Open to all. Entry is free but donations to the Heritage Centre and St Michael & All Angels Church Fabric Fund will be welcomed.

Refreshments will be served from 7pm.

Dulverton Group Exmoor Society

<p style="text-align: center;">We invite you to join us on Thursday 12th March at 7:30 p.m. for a talk about "Conserving Exmoors Butterflies"</p> <div style="display: flex; justify-content: space-around;">   </div> <p style="text-align: center;"><i>This talk will focus on the work that Butterfly Conservation have been doing over the past 19 years to conserve the Fritillary butterfly species found on Exmoor.</i></p> <p style="text-align: center;"><i>You will learn why Exmoor is such a special place for rare species like the High Brown and the Heath Fritillaries and what it takes to keep these rare species on Exmoor.</i></p>	<p style="text-align: center;">Thursday 9th April Red Stag Safaris - Andrew Turner</p> <p>Andrew is Somerset born and bred and grew up on Exmoor spending most of his time as a child on his grandfather's farm in Wootton Courtenay.</p> <p>He will talk about his life growing up on Exmoor, about his safaris, about Exmoor and especially its wildlife and the red deer, with photographs he has taken over many years along and a film he made on the red deer.</p>  <p style="text-align: center;"><i>Both talks are free to DGES members, Non Members £3 please to help with expenses. (You can join on the night)</i></p>
<p>Riverside Youth Centre, Kemps Way, Dulverton at 7:30 p.m.</p>	



**Diamond
Shine**

**Mobile Vehicle
Valeting**

Professional

Affordable Reliable

**Your local vehicle
cleaning company**

07896 154 176

phil46yam@hotmail.com

**Volunteers needed now for Marie
Curie's Great Daffodil Appeal in
Somerset and North Devon**



Marie Curie, the UK's leading charity for people living with a terminal illness and their families, is urgently calling for volunteers across Somerset and North Devon to give just two hours of their time to hand out the charity's iconic daffodil pins, in return for donations.

Volunteers will be supporting the Great Daffodil Appeal – Marie Curie's biggest fundraising campaign, held every March.

In the next 10 years, more than six million people will die in the UK and of this number 75% will need end of life care. The money raised from the Great Daffodil Appeal will help Marie Curie Nurses provide much-needed expert care to people in Somerset and North Devon with terminal illnesses, as well as support for their loved ones.

To volunteer for Marie Curie's Great Daffodil Appeal and give out the charity's daffodils pins in return for donations, please visit mariecurie.org.uk/collect or contact Riona on Riona.houghton@mariecurie.org.uk or call 0117 9420 429.

**Roy
Hart
Computers**

01884 257288

chris@rhcomp.co.uk

computing without tears!

We can offer the **right** solution for the
first time & experienced user

Is your computer running slowly?

Contact **Chris** for a MOT & service to keep it in tip top condition

New Systems ● Upgrades ● Virus & Problem Solving

Wifi, Broadband and Smart TV connections

FAMILY FIRM SUPPORTING COMPUTERS IN YOUR HOME SINCE 1981

LEE RINGROSE
GARDEN & FIELD
SERVICES

Mowing - Ride-on mower
for large gardens
Paddock topping
Hedge cutting
Strimming
Weed control (licensed sprayer)

Call: 01398 371127 / 07764 410198
Email: leeringrose@gmail.com



FOUR SEASONS
PROFESSIONAL TREE SERVICES

All Aspects of Tree Surgery
Stump Removal
Crown Lifting Crown Reduction
Grounds Maintenance Grass Cutting
Hedge Cutting All types of Fencing
Wood Chip Seasoned Logs
General Garden Maintenance Turfing
Fully Insured Private & Commercial Customers
Soft Landscaping and Planting
Free Quotations
www.fourseasons-treeservices.com
Oliver Vernon
info@fourseasons-treeservices.com
01884 563021/07766168162



Joshua Waygood Historic Building Conservation

Providing traditional lime restoration and repairs to historic buildings throughout Somerset & Devon

Lime plastering, lime rendering & lime pointing, lime washing, traditional stonework, stone repairs cob wall repairs

07795 967292

josh_waygood@hotmail.co.uk



Remember your precious pet with one of my handcrafted pet markers

TREASURED PETS



www.beckfordsartworks.co.uk
laurencebeckford@hotmail.com



Laurence Beckford
Dulverton
01398 323746
0772 4452 961

Larchwood Cattery

East Anstey EX16 9JL



Purpose built

Individually heated chalets

Spacious outdoor runs

Tel: 01398 341100/07598813621

Email: Info@larchwoodcattery.co.uk

www.larchwoodcattery.co.uk



All Breeds are welcome for:

Clipping, Stripping, Scissoring, Bathing & Drying

Bath and Brush outs (B & B's) – To keep your dog squeaky clean and matt free inbetween grooms

All Grooms include bath, trim, styling, nail clipping and ear cleaning if needed.

Puppies are welcome for puppy baths and grooming to get them prepared for their grooming life.

Gentle, Caring & Patient

Please call Denise on

01398 324370 or 07584085668

9am – 5pm Monday to Friday

Brushford, Dulverton, Somerset

The Winsford Dog School Winsford Village Hall

Training for that perfect companion!

Classes on Monday evenings:

RESERVE YOUR PLACE NOW

Puppies - 5:30pm

Improver - 6:30pm

Advanced Adults- 2:30pm

Courses run for 6 weeks.

All welcome from pups to geriatrics.

To book a place please contact

Suzy on 01643 851281

www.suzyandcanines.co.uk

dilly7a@yahoo.com

1:1 is always available for behavioural issues or training to get ahead!

Kit Di Marte

BSc(Hons) MSc EEBW

BHS Accredited Professional Coach

Stage 3 Coach in Complete
Horsemanship

Stage 4 Senior Rider and Yard
Manager

Available for freelance coaching
and schooling.

Also fully qualified

Equine Body

Worker and

McTimoney therapist.



07758 236 240

kit_dimarte@yahoo.co.uk



A Dog's Day Out – Driving In My Car

What's that one do Buddy?" That's great, they're hazard lights. Watch – see flicking. "I

know this one, that's good morning you're listening to BBC Radio Four and this one moves my window up and down".

She locks it sometimes when you play with it too much Honey. My favourite is the hooter. You can only use it when she's not in the driving seat. It's there, look in the middle of the steering wheel. I love the hooter, it makes driving more exciting and if you want her to hurry up in the shop, she soon comes running out if I stand on it. Officially of course, police constable Jo says we're not allowed in the front seat, that's why she's taken the back seat out to make more space for us. "Pheasants on the road ahead!"

She'll use the hooter. Listen - look running away now. I love driving in my car. Did you see the pictures of the squirrels in the newspaper last week? They're all over the news; it says there are too many of them and they are damaging our environment. They are going to make some dud males and release them into the wild with the others so that it slows up their breeding programme. "But that means there will be more squirrels not less!" I know it doesn't add up but they think they know what they're doing.

"It would be a shame if there weren't any squirrels left to chase. People will start throwing balls at us again. Fetch the ball is such a stupid game. What's the point in it, we run over and get it and then they throw it away again. I don't know - what's the matter

with them. Much more fun in the woods with the squirrels. And think of the damage to the environment, there'd be abandoned balls littered all over the place, could cause a nasty accident. I don't think we need to worry if the dud squirrel thing works, it will take years - if they've got it right. Plenty for us to chase still. Roll your window up Honey please, it's getting a bit chilly now.

Buddy Brown (pure Jack Russell) a roving reporter

Reference: Research at The Roslin Institute





**PRISM
EQUINE
LAUNDRY**

07740 865600

**THE COMPLETE HORSE RUG
WASHING AND REPAIR SERVICE**

- 7 day turnaround (or less)
- Free collection and delivery
for 5 or more rugs
- Quantity discounts
- Repairs undertaken at £10ph
- Nikwax products used

**Rug Wash ... £11.00 Reproof ... £7.00
Fleeces and Fly Rugs ... £9.00**

www.prismequinelauundry.co.uk

Winters around Exmoor can be rather wet! Often a constant daily battle of strong winds and heavy rain, giving no respite. Not only is this difficult for horse owners, contending with constant wet clothes and the muddy boots, but it also puts a strain on horse rugs. Whilst we can come in and change out of our wet clothes, we expect our horse rugs to cope for the whole season, keeping our beloved horses snug and dry even in the harshest of conditions.

As with our winter coats, when we are out time and again in the rain, eventually the water repellency stops and we start to feel the rain seeping through the fabric. It's the same with a horse rug - and then when you factor in how our horses love to roll in the most muddy part of the field - grinding in mud and dirt into the fabric - our rugs have a tough life.

But if you maintain your rug by getting it professionally washed and reproofed on a yearly basis, then the rug will repay you with years of service. The Nikwax products used by Prism Equine Laundry are plant based products so contain no nasty chemicals. The wash removes the dirt residue which affects the breathability of the rug and then the reproof coats the outer fabric with a water repellency barrier so you can be sure at the start of the winter season you have a rug which will cope with the Exmoor weather.



07792233649

david@trailerservicesporlock.com

SPECIALISED DOG TRAINING

- ACTIVITY TASTER CLASSES
- PUPPY CLASSES
- DOG AGILITY
- POSITIVE GUNDOG TRAINING
- SCENTWORK CLASSES
- TRICK TRAINING

Exmoor Based Venues - Porlock,
Withypool and Nr. Barbrook

GET STARTED NOW AND CALL

07825 884009

www.the-dog-academy.com



Jeff Pegrum

Stockham Farm
Dulverton

07976 951860

pegrum.jeff@gmail.com

- 35 years' experience in all agricultural, equestrian and domestic landscaping
- Steel frame buildings
- Groundworks, drainage and concreting
- Internal and external stabling
- Sand schools
- Cross country jumps/fences built
- All types of fencing
- Patios and garden projects

For a friendly, free quotation, contact Jeff.

FOREVER ANIMAL CARE

- How to help your horses and dogs to be healthy naturally
- Build your animal care business with bespoke coaching
- Enjoy quality aloe vera healthcare for your horse, dog and you
- Free training and careers advice on holistic horse and dog care



www.taranet.co.uk info@taranet.co.uk 07340 672920 FB: @HolisticAnimal

JANE PENFOLD EQUESTRIAN SERVICES

Equine Bodywork –
The Masterson Method®, Myofascial Release,
Laser Therapy, Acupressure and more!

Saddle Fitting – checking, reflocking,
help sourcing secondhand saddles,
numnahs, new girth straps etc.

Riding Tuition – all ages 10+.
Classically trained, BHS Accredited Coach
and former BD listed Judge.

The
British
Horse
Society



*Fully qualified and insured –
call me for a chat to see
if I can help you!*

www.flexiblehorse.co.uk

07711 130371

Jane@flexiblehorse.co.uk



7 - 11 October Horse of the Year Show



NEC Birmingham

Sunday 11 October (matinee)
Including privately organised
Ridlers Executive Coach
transport Exmoor return.

All enquiries to
Carole Woods, The Farmers Den,
Exford. 01643 831151
carolecwoods@aol.com or
Gwenda Bassett 07900 837183.

Horse of the Year Show returns to the NEC in Birmingham for another fantastic year of top-class competition this October (7th-11th). You can look forward to a jam-packed timetable of international show jumping, dressage, showing championships and scurry driving expertly mixed with enchanting displays and performances.

With edge-of-your-seat entertainment, all-day shopping and a wide range of disciplines there is something for every equestrian to enjoy this year.

STEVE BISHOP **PEST CONTROL** **SERVICES**

*Covering West Somerset,
North and Mid Devon*

*Control of rural,
residential & commercial pest species*

*Qualified Pest Control
Technician*

01643 851267

07870 815400

For Fast, Friendly, Reliable Service

**Rats, Mice, Moles,
Crawling and Flying Insects
Inc. Wasps, Fleas, Bedbugs,
Cockroaches, Flies,
Bird control and proofing
Electric Fly Killing Units Supplied**

Lance Nicholson Country Pursuits



9 High Street, Dulverton
01398 323409

Shotguns, rifles,
ammunition, clays etc.

All your game fishing needs
plus details of the

Dulverton Angling Association.
Large range of Barbour clothing.

www.lance-nicholson.co.uk

A vibrant setting of 'The Song of Mary'

John Rutter's

'Magnificat'

Sung by

The Barle Singers

St Mary Magdalene
Church, Exford

Wednesday 8th April
7.30pm

All Saints Church,
Dulverton

Friday 10th April
7.30pm

Retiring Collection



Exmoor BookBinding

01643 841116

sarah@the-burns.com

**Repairs & Restoration to
all your favourite books.**



Albums, Folios
Scrapbooks &
Journals
made to order.

**Floors n' Chores
hire me to do yours!**



**Home help for elderly people
including cooking & shopping.
General domestic cleaning.
Babysitting.
Insured, Qualified and DBS.
Established 5 years.
Somerset Micro-Provider.
Free visit for quote/ Please call;
Jenny 01643831869/07805540261
FloorsnChores@yahoo.com**

DAN PASSMORE

All aspects of garden maintenance

-  Grass cutting
-  Strimmer work
-  Hedge cutting
-  Garden clearance
-  Garden Tidy up
-  Landscaping
-  Driveways, Patios and Paths
-  Garden gates and Fencing

For a free quote please call: 01643 851632



JAYNE PEARCE

SOFT FURNISHINGS
OF EXMOOR AND WEST SOMERSET

~curtains, pelmets, blinds, loose covers~
~extensive range of fabrics~
~poles and tracks~
~professional service from initial design to installation~

☎ 07837 718745 or Email info@jaynepearce.co.uk

Visit www.jaynepearce.co.uk



Stable Bungalow, Honeymead, Simonsbath, Minehead, Somerset TA24 7JX

PAUL PRIEST

LIME PLASTERING & STONE WORK



Lime Plastering and Stonework Specialist

- * Application of Traditional Plasters and Washes
- * Restoration and Conservation of old properties
- * Damp Management through the use of breathable materials
- * All aspects of Plastering and Stonework - both exterior and interior

Mob: 07870 454003

www.paullimeplastering.co.uk

NO VAT CHARGE ON LABOUR

"Trust in a specialist who is proud to put his own name to his work"

Exmoor Community Youth Club

Chairman Robin Ashburner has announced that he will retire on May 1, 2020 after ten years as chairman and a founding member of the Exmoor Community Youth Club.

Everyone is invited to celebrate the Youth Club's 10th anniversary and to thank Robin for his long service at a community party at the Pavilion on Saturday May 16th, 12-2pm. Please make a note of the date and be sure to come. There will be a BBQ, music, a Bouncy Castle, old and new friends and plenty more.

The Exmoor Community Youth Club was begun by Jenny Acland, Cathy Nicholls and Robin Ashburner with huge support and input from the Rev. David Weir. It grew out of the ashes of the original Exford Youth Club, started by former rector the

Rev Keith Powell. The Charity Commission was soon applied to for that all-important charitable status. The trustees saw the ECYC as all-inclusive for Exmoor children aged from 6-16.

Thanks to Sue Hayes, who became the fourth trustee, Laura Tasker was appointed as the first youth worker, a post she still holds after ten years along with her deputy, Nicky Hodgkiss.

The first job was the huge renovation of the neglected cricket Pavilion and its adjacent, derelict shed. All this work was done by volunteers.

Now the ECYC has 100 members, seven trustees and many volunteers.

The popular Marmalade Party, organised by Sir Antony and Lady Acland, will once again be held at Staddon Farm on Thursday 26th March, 10AM. Please come to this important fund-raising event.

The Dulverton Health Walking Group

The group meets each Tuesday morning at 9.30am at the Dulverton Surgery Car Park.

Please wear suitable waterproof clothing & also walking boots or wellingtons. The walks are not very strenuous and last from between 60 - 90 mins generally. At the end of the walk we all patronise one of the local refreshment facilities. We always welcome new walkers so if you are interested in joining us please contact either Richard Clarke on 01398 341141, or 07976 363453 or richardclarke567@btinternet.com. OR Richard Archer on 01398 324160 or 07773 160222 or archerr@hotmail.co.uk



Spirebourne Limited

Liquid Waste Disposal and Drainage Co.

FREEPHONE 08000 855185

spirebourne@hotmail.co.uk
www.spirebourne.co.uk

EMERGENCY CALL OUTS

Septic Tank/Cess Pool Emptying - Any Size
Grease Traps
Drain Blockage Clearance
Various Commercial Liquid Waste Disposal
Servicing
CCTV Drainage Surveys
Pump Repairs & Renewals
Installation of Septic Tanks & Sewage Treatment Works
Mantair Units

Chris Flay

Plumbing & Heating Engineer



For Quality Workmanship
and Guaranteed Success

RAYBURN

Boiler Servicing & Maintenance
Rayburn Sales & Service
Gas, Oil and Solid Fuel Installations
Oil Tank Replacement - 24 Hour Service
Domestic or New Housing Enquiries Welcome

STANLEY

AGA

25 YEARS
EXPERIENCE



OIL BURNER CONVERSION

NETHER STOWEY (01278) 732 732

The Arches, South Lane, Nether Stowey, Bridgwater

EXE PEST

All types of pest control services & supplies

01398 331885

home

15 West Street

07971 983093

Bob

Bampton

07812 037716

Graham

Devon Ex16 9NJ



**Rats, Mice, Fleas, Ants, Wasps,
Bees, Cockroaches, Flies, Moths.**

info@exepest.com





01984 623404 | wci.co.uk
enquiries@wci.co.uk

Service, maintenance and repair of all types of sewage treatment plant and pumping equipment.

All manufacturers. Domestic and commercial systems.

Emergency Call Outs. Biennial diarised visits.
Annual Service Contracts with a Service Level Agreement.

Call or email us today to arrange a service visit or discuss your options

British Water Accredited Service Engineers.

- ✓ Responsive
- ✓ Professional
- ✓ Fully Insured
- ✓ Family Run



Oil fired boiler servicing and repairs.

Rayburns, Agas, Stanleys & fires all covered.

Oil tank installations.

All types of plumbing & heating work undertaken.

01769 550504

07951 436042



MIKE COTTRELL
Your Local Building Contractor

**New Build
Extensions
Renovations
Loft Conversions**

Tel: 01398 323789
Mobile: 07837 729484

Email: mikecottrell20@gmail.com

Making time for you to enjoy life



Providing support and housing for older people at Abbeyfield House, Dulverton

Please call **01398 324136** for more information

Abbeyfield

Dulverton Society
Making time for older people

Registered National Office: The Abbeyfield Society, St Peters House, 2 Bricket Road, St Albans, Hertfordshire AL1 3JW

Figs Shop

2 Newton Square
Bampton
EX16 9NE
01398331420
07949 534687
info@figsshop.co.uk
www.figsshop.co.uk

Exmoor Creative

WEB DESIGN + DIGITAL COMMUNICATION

INSPIRED DIGITAL COMMUNICATION

Web Design • Copywriting • PR • Branding • Marketing Strategy • Planning • Hosting • Email • Photography

w: exmoorcreative.co.uk e: info@exmoorcreative.co.uk

t: 07725815802 / 07725810907



BRIDGE COTTAGE TEAROOM & GARDENS

Situated in the pretty village
of Winsford TA24 7JE

SEASON COMMENCES ON SUNDAY 29th MARCH 2020

Bookings now being taken for Sunday Lunch

Open Wednesday to Sunday 10.00 to 4.00pm & Bank Holiday Mondays

Open later on sunny days!

Now serving hot & cold food, daily specials and Sunday lunches

Fully Licenced

Available for private functions

Tel: 01643 851 362/mob 07885503776 www.bridgecottageexmoor.co.uk

HOBBS Electrical Contractors Ltd



*** Commercial * Domestic * Industrial ***

Electrical Installation

Rewires, new builds & renovations

Maintenance & Repairs

Inspection & Testing, Portable Appliance Testing

Dulverton: 01398 323518 Tiverton: 01884 253563

Unit 4, Exebridge industrial Estate, Exebridge, Dulverton, Somerset, TA22 9BL

Early bird tickets now on sale for Minehead Literary Festival 2020

Minehead Literary Festival returns for a second year over the weekend of Saturday and Sunday April 25 and 26 with a fabulous line-up of speakers. The early bird discounted weekend pass for just £30 is available until March 27, 2020, and tickets may be booked online at www.mineheadliteraryfestival.org.

Fact is the New Fiction - writing in a post-fiction world

Novelist, biographer and critic Dame Margaret Drabble heads an impressive line-up of speakers, including popular children's author Sam Angus, whose first book Soldier Dog will be released as a movie this year. Sam will give a talk about historical events as inspiration for her writing.

Exmoor writer and harpist Hazel Prior talks about her first two novels Ellie and the Harp Maker and Away with the Penguins, which will be published in March.

Cartoonist Kipper Williams, who has drawn for The Spectator, Private Eye and The Oldie, will give an illustrated talk – with examples of his work and some live drawings – about telling stories through cartoons in Talking Cartoons.

Film maker and television director David Parker gives an illustrated talk about the interviews he recorded in 1994 with Laurie Lee, who notoriously didn't 'do' television, giving a rare insight into the experiences that shaped one of England's great 20th Century writers and author of the much beloved Cider with Rosie.

Hazel Prior will also give a workshop on writing fiction and getting it published. In her workshop Hazel will look at the elements that make a really good story, examine common mistakes made by budding writers and discover some self-editing tips and tricks. The workshop will also explore different pathways to publication. Tickets for the writing workshop are limited, so early booking is essential.

Speakers at last year's festival Tessa Hadley and Pamela Holmes will also be participating in MLF 2020 and, with Margaret Drabble and Kipper Williams, will take part in the closing panel discussion on this year's theme Fact is the New Fiction – writing in a post-fiction world.

A short story competition, with separate classes for adults and children, is being organised in the run-up to the festival, for which the deadline for all entries on March 6, 2020, and further details can be found on the MLF website.

For more information about MLF 2020, please visit the website or call 01643 703921.





N. H. Hopkins

General Builder

All Building Work Undertaken

Tel: 01398 323687

Mob: 07790 711 125

EXMOOR CARPENTRY

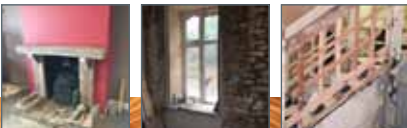
Offering a wide range of carpentry and joinery services in the North Devon area. These services range from timber framed building projects and domestic alterations, through to hand-made doors and bespoke internal joinery, including built-in bookcases, wardrobes and hardwood furniture.

Contact Andy on:

m 07920403703 **f** 01398341620

e enquiries@exmoorcarpentry.com

w www.exmoorcarpentry.com



CHIMNEY SWEEP

**NACS REGISTERED
CLEAN AND EFFICIENT
FULLY INSURED/ CERT ISSUED
COWLS AND BIRDGUARDS FITTED
WOODBURNERS REFURBISHED
POWER SWEEPING
CCTV CAMERA SURVEYING**

**PHONE IAN
TEL : 01984 640893
MOBILE : 07502099323**



EXMOOR FOREST INN

Ideally located in the middle of Exmoor

A warm welcome • Family & dog friendly

Delicious freshly prepared meals and snacks

Local and guest cask ales

Beverages and cream teas • Party bookings invited

Bed & Breakfast accommodation

2 bedroom self catering cottage

Our large entrance hall is an ideal place to leave walking gear,
muddy boots and coats. Towels provided for damp dogs.




Simonsbath, Minehead, Somerset, TA24 7SH

telephone: 01643 831341 • info@exmoorforestinn.co.uk



[@exmoorforest](https://twitter.com/exmoorforest)

www.exmoorforestinn.co.uk

Find us on 



Remote Therapies

Beauty & Wellbeing Clinic

A beauty salon situated just 1.6 miles from the historic charter town of Bampton, on the outskirts of Shillingford. Here at Remote Therapies we offer a range of treatments to suit all.

~Waxing

~Gel & Acrylic Nails

~Eye Treatments

~Dermalogica Skin Care

~Eyelash Extensions

~Massage

~Manicures & Pedicures

~CryoSthetics

~Spray Tanning

~Treatments for Men

Free onsite parking

T: 07845 925907

E: remotetherapies@gmail.com

w: www.remotetherapies.co.uk

Unit 2d, Fourwinds, Shillingford, Bampton, Tiverton, Devon, EX16 9AU



CanDo4U



No job is too small.
If you need it done,
call to get your work
done at a fair price.

Estimates are free, so
don't wait, call Mike.

07866 429896
01398 323968

- * **Painting & decorating**
- * **Small maintenance work**
- * **Lawn mowing & gardening**
- * **General help around the home**

Leave a message if I'm busy,
I'll get back to you soon.

Fully insured, local and reliable service.

OIL BURNER SERVICE MAINTENANCE & REPAIRS

PAUL JONES EXFORD



with over 15 years experience

OFFERING YOU THE BEST QUALITY
OIL BURNER SERVICING AROUND

COMPETITIVE RATES
BEST QUALITY SERVICE
ALL REPAIRS UNDERTAKEN

Call now on **01643 831384**
or **07811 600694**



Need your Chimney swept or thinking of having a Log Burner fitted?

It could be damaged or blocked with birds nests. If so it could be a fire risk and may lead to deadly Carbon Monoxide fumes leaking into your home. Now is the time to get it checked.

We cover North Devon, West Somerset, Exmoor, North Cornwall. We have full Public Liability Insurance and certificates are issued to confirm work.

The services we provide are:

- Full sweeping service to all chimneys including Rayburns, Agas and Stanleys
- H.E.T.A.S. registered installer of Wood and Multifuel burners.
- Service and repairs
- Gas and smoke detectors supplied and fitted
- Chimney stack repairs
- Supply and Fit all types of Cows, Bird guards and chimney pots
- Landlord & holiday home owner solid fuel appliance safety checks issued.



Follow us on our
Twitter and
Facebook pages
for more information
and offers.



Call to arrange a no obligation site visit

www.phoenix-chimneys.co.uk

01271 855543 / 07956 866593

Are you struggling with debt?

1 in 12 adults are struggling with unmanageable debt in the UK today, and only 20% of them seek help. In rural areas the problem can be even more severe, with isolation and lack of infrastructure meaning that even those who try to find help can take up to 3 years before doing so, by which time their problems are much worse.

But now there is help available locally for those living in and around Exmoor.

CAP (which stands for "Christians Against Poverty") is a UK-based charity which helps people get out of debt. CAP now has over 300 "Debt Centres" in the UK, which provide their debt-advice service in people's homes, and face-to-face. This service is completely confidential, and completely free.

The Exmoor area is covered from the Wiveliscombe Debt Centre, which is managed by Andrew Kelly.

When someone calls the CAP helpline (0800 328 0006), they will talk to highly-trained and compassionate advisors who will put them in contact with the local Debt Centre.

The Centre Manager will visit them in their home, and over the course of three visits CAP will assess their exact needs and put together a Debt Management Plan. The local CAP team will also offer the support and advice needed to establish healthy and balanced finances so they stay out of debt going forwards.

The Wivey Debt Centre also provides emergency short-term help for clients in particular difficulty – such as food supplies and/or food bank vouchers, support in court appearances, and dealing with a range of agencies.

If you, or someone you know, is struggling with debt, call CAP on 0800 328 0006, and begin the journey to freedom.



Haddeo Firewood

Kiln dried oak firewood	£85
Seasoned oak firewood	£62
per large dumpy bag (0.72m ³)	

Bickham, Timberscombe, TA24 7UA

Delivery can be arranged.

BERNARD DRU 07920 516225

email: bernard.dru@oakfloor.co.uk



TRYCHAY 500

One for your Diary

August Bank Holiday weekend at Morebath Church and Village Hall.

All invited to come and celebrate 500 years since Sir Christopher Trychay began writing his historical records of life in Morebath during the reformation.

There will be entertainment for all the family, a flower festival, historical artefacts, refreshments and much more.

Do you dream of having your book published?

We specialise in getting published a wide variety of books, from autobiographies, poetry, art books, photo memory books etc. typing manuscripts and also video presentations... the list goes on.



Need design and print services?

Why not contact us on E: exmoornews@gmail.com T: 07497 914441

THE EXMOOR SOCIETY PINNACLE AWARD

An award of £3,000 is available to individuals or groups aged between 18 and 27 who live, work or study in the Greater Exmoor area.

The Award was set up in 2011 by The Exmoor Society for young entrepreneurs who wish to live and work on Exmoor. As a conservation body, we fully recognise the importance of providing opportunities for young people to remain on the moor when they enter the world of work. We want to show that beautiful landscapes and livelihoods can go together to keep the very essence of Exmoor alive.

Applications for 2020 are being taken now. Apply now! info@exmoorsociety.com 01398 323335 www.exmoorsociety.com

Closing date 30th June 2020

RAFFLE OF A LIFETIME, DINNER FOR 4 + WINE AT THE IVY - LONDON'S MOST EXCLUSIVE RESTAURANT

This just has to be everyone's idea of a dream meal! How often do we get the chance of eating mouth watering delicacies and in the grandest of locations? The raffle voucher has been given by the owner of The Ivy and specifically aimed at raising money for the community around Dulverton; in this case, Dulverton and Brushford's churches and for the Hospice. Tickets costing £1 are available at a number of outlets in Dulverton. The draw takes place in Dulverton church on the 27th March.



Bobcat Hire

Skid Steer Loaders 44", 48" & 66" wide

Mini Diggers ranging from 1.5 ton to 6 ton

**Available with Hydraulic Auger, Breakers,
Post Banger, Grab and Tree Shear Grab**

Self Drive/Competitive Rates

Tel: 01598 740406

Mob: 07970 914070

**Richard Smith – Agricultural Engineer
North Molton, Devon**



FRIENDSHIP & SONS

Funeral Directors

For the personal touches that matter

Dedicated to providing dignified funeral services at affordable costs without compromising on quality

Inclusive Funeral - £1995 plus disbursements

- Oak veneered coffin provided
- Provide hearse and bearers
- Limousine to transport family
- 50 service sheets • 3ft coffin spray
- Newspaper announcement in the local press



For professional advice and guidance please contact us 24 hours a day

Dulverton 01398 324590

Golden Charter
Smart's Planning for a Better Life



Office and Chapel of Rest, Unit 7 Barle
Enterprise Centre, Dulverton TA22 9BF | www.friendshipandsons.co.uk | nick@friendshipandsons.co.uk

EXE VALLEY ELECTRICAL

For all your electrical needs

DOMESTIC ♦ COMMERCIAL ♦ AGRICULTURAL

- ▶ Electrical Installation, maintenance & repairs
- ▶ Full & part rewires
- ▶ Additional sockets & lights
- ▶ Security lighting
- ▶ Portable appliance & installation testing

National Inspection Council For
Electrical Installation Contracting



Call Robin Allen, your friendly local electrician

Tel: 07773 366 751

Dulverton based
ALL WORK GUARANTEED

PARISH AND TOWN COUNCILS

Bampton T.C.: Clerk: Penny Clapham	clerk@bamptontowncouncil.gov.uk	01647 253066
Brompton Regis P.C.: S Buchanan	brpcclerk@gmail.com	01984 641706
Brushford P.C.: Clerk: Clive Knight,	cliveknight@me.com	01398 324140
Cutcombe P.C.: Clerk: Nic Kemp	cutcombeclerk@gmail.com	07852 813983
Dulverton T.C.: Sec: Miss A. Rose	clerk@dulvertontowncouncil.co.uk	01398 324561
East Anstey P.C.: Clerk: Mrs Jill Larcombe	eastansteypc@yahoo.co.uk	01884 252647
Exford P.C.: Clerk: Nic Kemp	clerk@exfordparishcouncil.org	07852 813983
Exmoor P.C.: Clerk: Verity Vigers	exmoorparishcouncil@gmail.com	01643 831511
Exton P.C.: Clerk: Andrew Moore	clerk@extonparishcouncil.co.uk	01643 851694
Oakford Parish Council: Chair: Mr John Phillips	patsyphili@aol.com,	07583 146498
Upton P.C.: Clerk: Mrs P Purvis	uptonparishclerk@hotmail.co.uk	01398 371548
Winsford P.C.: Clerk: Nic Kemp	winsfordparishcouncil@gmail.com	07852 813983
Withypool & Hawkridge P.C.: Clerk: Charlotte Hornsby	withypoolhawkridgeparishclerk@gmail.com	01643 831535
Wiveliscombe T.C.: Clerk: Bryan Howe	townclerk@wiveliscombe.com	01643 704963

LOCAL CHURCHES AND CHAPEL CONTACT NUMBERS

All Saints Church, Dulverton: The Rev. Andrew Thomas	01398 323018
Dulverton Benefice/All Saints/Community choirs: Gary Cooper	07419 212354
All Saints Church, Dulverton, Bell Tower: Anne Markwick	01398 323823
Brompton Regis with Withiel Florey, Upton and Skilgate: The Rev. Andrew Thomas	01398 323018
Brushford: The Rev. Andrew Thomas	01398 323018
Exmoor Benefice: The Rev. David Weir, The Rectory, Exford, TA24 7LX	01643 831330
Catholic Church: Priest: Father Michael	01643 702201
Dulverton Congregational Church, Chapel St: Minister:	01398 323943
The Traditional Anglican Church: Loxbear, Priest Reverend Aird	01769 581042
St Peter's Church: Mrs B. Staples	01643 851396
St Peter's Church Oakford: Rev'd Stephanie Gordon-Jeffs office@exevalleymissioncommunity.org	01884 250417

ARTS

Community Music Events: Gary Cooper www.all saintsdulverton.org.uk	07419 212354
Dulverton Art Group: Sec: Mrs G Rose, 2 Stable Mews, The Square, Witheridge	01884 860495
Dulverton Camera Club: Sec: Peter Main, 4 Valley View, Morebath, Tiverton, EX16	01398 331556
Dulverton Players: Chair: Les Silverlock	01398 341850
Oakford Players, Chair: Mr A Holmes	01398 351665

SPORTS CLUBS

Anstey Short Mat Bowls: Chris Dale 01398 341615
 Bridgetown Cricket: Sec: Mr. D. Sherring, Mid-Wicket, Bridgetown, Dulverton TA22 9JN administrator@bridgetowncc.co.uk
 Brushford Short Mat Bowling: Sec: Sam Takle 01398 324147
 Cutcombe Cricket: Sec: Mrs Maria Adams, 1 The Beeches, Wheddon Cross 01643 841036
 Dulverton Angling Assn: c/o Pat Veale, 9 High St., Dulverton, TA22 9HB 01398 323409
 Dulverton Badminton Club: Sec Judy Smith 01398 324353
 Dulverton Cricket Club: Robert Dubery 01398 323474
 Dulverton Cricket Club, Colts: Mrs Christine Dubery 01398 323474
 Dulverton & District Tennis Club: Orla Jones 07783 930700
 Dulverton & Exmoor Squash Club: Membership Sec: Chris Winter. chriscwin@aol.com 07710 046107
 Dulverton Jnr. F.C: Sec: Mrs Christine Dubery 01398 323474
 Dulverton Netball Club: Sec Lindsay Smith, 25, Nicholas Close, Brushford 01398 323834
 Dulverton Snooker: Sec: Mr. D. Bodger, 39 Fishers Mead, Dulverton, TA22 9EN 01398 323899
 Dulverton Sports and Social: Chair: Carl Hooper 01398 324494
 Dulverton Sportsfield Management: Adrian Smith 01398 323834
 Dulverton Senior Table Tennis: Richard Archer 01398 324160
 Dulverton Town F.C: Sec: Mr. J. Atkins, 1 Exebridge, Dulverton. TA22 9AY 01398 323787
 Exmoor Croquet Club: Chair: Connie Heywood 01398 341556
 Moorland Hall Sports: info@wheddoncross.org.uk
 Wimbleball Fly Fishers: enquiries@fishingthewest.co.uk

PRE-SCHOOL GROUPS

All Saints School & Nursery: 01398 323231 & 01398 323223
 Anstey Parent and Toddlers Group: E A School 01398 341369
 Little Owls Nursery at All Saints C of E School, Dulverton 01398 324360
 Rhythm n' Brews Toddler Group: Sabine Cooper 07419 212354

SCHOOLS

All Saints C of E School: Fishers Mead TA22 9EN 01398 323231
 Brompton Regis Toddlers: Mrs.S. Julian, Court Place Farm, Skilgate 01398 331031
 Cutcombe C of E First School: Wheddon Cross, TA24 7DZ 01643 841462
 Dulverton Junior School: Barns Close West, TA22 9EE 01398 323223
 Dulverton Children's Centre: All Saints School, Fishers Mead TA22 9EN 01398 324360
 Dulverton Family and Toddlers Group: 01398 324329
 Dunkery PreSchool: Supervisor: Mrs. S. Matravers, Shute Close, Cutcombe, Minehead 01643 841008
 East Anstey Primary School: East Anstey, Tiverton, Devon, EX16 9JP 01398 341369
 Little Owls Nursery: All Saints School, Fishers Mead TA22 9EN 01398 324360

WOMEN'S ORGANISATIONS

Anstey W.I.: President: Mrs. C Wood 01398 341472
 Brompton Regis W.I.: Sec: Mrs. P. Beecham, Rose Cottage, Brompton Regis 01398 371407
 Cutcombe & District M.U.: President, Pam Anson 01643 851616
 Cutcombe & District W.I.: Mrs. Pam Anson 01643 851616
 Dulverton & Brushford M. U.: Mrs A. Gregory, 22 Jury Road, Dulverton, TA22 9DU 01398 323587
 Exford Moorhens: Chairman: Mrs. I. Collett 01643 831016
 Oakford Moorland Ladies Club: Chair: Patsy Phillips Patsyphili@aol.com 01398 351648

YOUTH ORGANISATIONS AND ACTIVITIES

Bampton Scouts/Cubs/Beaver748s: Tony Weiss 01398 331901
 Dulverton & District Young People's Project: Chair: John Preston 01398 323862
 Dulverton Ballet: Mrs Wightmore, Flat 3, Easter House, St. Andrews St. Tiverton 01884 253999
 Exmoor Community Youth Club: Organiser Laura Tasker, Fridays 6 – 8 pm 01643 831125

OTHERS

Abbeyfield House 01398 324136
 Bampton Library and Resource Centre, Station Road 01398 332466
 Brushford Parish Hall: Bookings enquiries@brushfordparishhall.org.uk 07941 139846
 Brushford Luncheon Club: Treasurer: Margaret Albergy 01398 324587
 Care Direct for help and advice: www.somerset.gov.uk 0300 1232224
 Cutcombe Flower & Produce Show: Sue White 01643 841142

Dulverton Action Group: Magdalena Harding	01398 323 785
Dulverton & District Civic Soc: Kathy Currie, Bramble Bank, Ellersdown Lane, Brushford, Dulverton TA22 9BH	07493 518350
Dulverton & Southern Exmoor Twinning: Chair: Steve Ford, Dulverton	01398 323016
Dulverton Bridge Club: Sec. Brian Hughes, www.Bridgewebs.com/dulverton	01398 331219
Dulverton Dance:	01398 341850
Dulverton Ballroom Dance: Sec: Mrs Christine Dubery	01398 323474
Dulverton Development Forum: Sec: Mrs J. Ross	01398 323818
Dulverton Films: Jan Ross	01398 323818
Dulverton Fellowship for Mental Health: Marion Silverlock	01398 341850
Dulverton Gardening Club: Roger Hammond	01398 323954
Dulverton Group Exmoor Society: Sec: Dr Ken Mills	01398 331482
Dulverton Vets	01398 323285
Dulverton Vintage Films: Magdalena Harding	01398 323785
Dulverton Voluntary Drivers: Mike Beale	07743 885115
Exe Valley Market Bus: Chairman: Colin Radford, cjrbutterdale@gmail.com	
Bookings (To include private use) Jennie Chappell smilerjenniec@hotmail.com	01398 351666
Exmoor Patient Group: Chair: Sandra Wilson, W Nightcott, Dulverton TA22 9RT	01398 324687
Exmoor Beekeepers Association: Sec: Caroline Ralph	01643 851622
Exmoor Community Bus Assn: Sec: Mr. G Knock, 6 Pounds Close, Brushford TA22 9AL	01398 324555
Exmoor Pony Centre: Ashwick, Dulverton, Somerset, TA22 9QE	01398 323093
Exmoor Pony Society: Sec: Sue McGeever, Woodmans, Brithem Bottom Cullompton, Devon EX15 1NB	01884 839930
Exmoor Rotary Club: Humphrey Berridge (PRO), Station Hse, Luke St, Bampton	01398 332324
Oakford Village Hall: Chair: Mr D Bannister davidbannister10@hotmail.com	01398 351135
Bookings: Mrs Dawn Williams dawnwilliams1@gmail.com	01398 324035
Royal British Legion Dulverton: Peter Donnelly	01398 323030
TA22 Voluntary Lift Scheme (formerly Brushford Voluntary Lifts): Chair: T. Wilson	07528 326880
Tiverton Model Aero Club: Sec: Mr. P Veale, 9 High St., Dulverton TA22 9HB	01398 323409
U3A Exmoor: Yvonne Moorfoot, 3 Lamb Back, Dulverton	01398 323529
Village Agent Jane Lillis janel@somersetccc.org.uk	07958 415270
West Somerset Advice Bureau:	01643 704624



WOODCOTT

Building Services & Property Maintenance

All house and garden work undertaken

Tel: 01398 322981 Mobile: 07960 944964

Email: woodcottbuildingservices@gmail.com

Contact Martin for a quotation Smaller jobs always welcome

Folding Chairs/Table Hire
Licensed Waste Carrier
House Clearance
Seasoned Logs
Bric a Brac
Valuations
Antiques

Brushford Bizarre

Tony Skilton

Carnarvon Arms Garage
Brushford TA22 9AG

Tel: 01398 324 150

Mob: 07802 357 962

Email: taskilton@aol.com



RENOVATION
RESTORATION
PRESERVATION

Maintaining the Building Heritage of Exmoor

All types
of work
undertaken



EXMOOR **BUILDERS**

T 01398 324 669 M 07831 252 276

e info@exmoorbuilders.co.uk w www.exmoorbuilders.co.uk



Tel: 01884 257808

- **NEW BUILDS**
- **EXTENSIONS**
- **RENOVATIONS**
- **LOFT CONVERSIONS**

Jimsam View, Canal Hill, Tiverton, Devon EX16 4JE

Tel: 01884 257808

Mobile: 07977 993526

Email: nick6692@sky.com

