

Delamere and Oakmere

News

Number 1

June 2005

Welcome.....

to the first edition of the new magazine. *Delamere & Oakmere News* is due to appear every other month and will be available free of charge to every household in the parish of Delamere, which includes Eddisbury, Oakmere and part of Willington as well as Delamere itself.

I first had the idea of doing this magazine when I suspected there was more going on locally than was generally known about. I had no idea how much more. The Community Centre alone is a hive of activity - from Bingo to Badminton, from Art Classes to Whist Drives, from Brownies to Golden Age. There are at least five places in the parish where you can dine out in style; we have the oldest caravan dealership in the country (if not the world), a garden centre, a horticultural nursery, a farmers' market, gardens now open to the public, a golf club, a cricket club, several lakes... oh and a forest... We are a major tourist centre. And in the unlikely event of your having to go anywhere else for anything we have trains and buses that can take you there (See the back page for details).

Hang on to this first issue, not that it's likely to become a collector's piece, but it does contain items that may not be repeated - basic information on clubs, phone numbers, bus and train times etc. If you feel you have any helpful contributions to make - news of activities, items of interest, comments or suggestions - these would be more than welcome.

One thing we do need - VOLUNTEER DISTRIBUTORS. Making sure this magazine reaches every household in a large and scattered area is a massive undertaking. Please get in touch if you can help. Contact me on 01829 752723.

Robin Ackerley.

Windermere?.....No, Delamere Blakemere on an April evening.



Welcome also to...

All those who have arrived in the area in the last few months. Among them.....

The Reverend Ann Kenton, who came to Oakmere Methodist Church last September (see page 4).

The Cartwrights. Ryan, his wife Emma and newlyweds Lee, Ryan's brother, and Suzanne*, took over at Delamere Stores last November. They opened the new delicatessen in April. Soon after they learned that the post office, which had been closed from one o'clock, was to remain open for another hour each day. The additional hour's opening was a result of Delamere Parish Council's request that the Post Office reconsider the afternoon closure which had taken effect the year before.

The Fishpool Inn acquired a new landlady in November with the arrival of Lynn Hore.

In January Stephen Docking was appointed Headteacher at Delamere School. He had been Deputy Head at Kelsall. The move was not the only memorable event for Stephen. At Christmas he became the proud father of baby son Frankie.

And Goodbye to..

Ron Giebka, who gave up his milk round on 15th April. I'm sure many people would like, belatedly, to thank Ron for his reliable service over the last 27 years. The new milkman is Stan Garner. Ring him on 01928 725852 if you wish to arrange delivery.

After nearly two years work is now almost completed on the barn conversions at what was the Old Pale Farm. Seven of the eight Pale Heights properties are now occupied. Meanwhile another set of barn conversions, at Farm Road, Oakmere is also now partly occupied.

What do you call the steep hill that runs up from Station Road towards the Old Pale?

Newcomers call it Eddisbury Hill, for the very good reasons that it leads to Eddisbury Hill itself and also to the farm of that name. What's more, there's a sign at the bottom that leaves no doubt. Local people, though, still call it Black Hill. Does anyone know why we do? And while we're on the subject, who knows where Black Bank is?

Firbobs

Natives of Delamere used to be called "Delamere Firbobs". Firbobs in turn called their neighbours "Norley Gorbies". In days gone by it was common to give nicknames to people from nearby villages. My great-grandfather called people from Little Budworth "Bud'orth Dusters". Does anyone know of any more of these old names?

Congratulations to Derek Wheeler of Station Road. At a ceremony at Wyvern House, Winsford Derek was awarded third prize for outstanding service in the *Vale Royal Mayor's Award for Endeavour in the Community* in April. The host of golden daffodils planted along Station Road and on the church drive are visible signs of Derek's efforts. Not only that, he serves on both Delamere Parish Council and the Parochial Church Council, the only one to serve on both committees, is a tireless worker for the Community Centre and devotes hours of his time collecting and delivering prescriptions for the elderly.

* **Congratulations** also to Lee and Suzanne who were married at St. John's Church, Norley on 14th May.

Our Local Vale Royal Councillors

Thanks to all four of our local councillors who have expressed their willingness to have their phone numbers published here. They are:
Councillor Glen Cunningham ~ Cuddington & Oakmere (01606 596725)

Councillor Val Godfrey ~ Cuddington & Oakmere (01606 883385)

Councillor John Grimshaw ~ Mara (ie Delamere & Willington) (01829 752177)

Councillor David Parks-Smith ~ Cuddington & Oakmere (01606 882007).

Our Two Parish Councils

Delamere Parish Council meets in the Church Room at 7.30pm on the third Monday of each month (August excepted). The Chairman is Mrs Sandra Hardy; the Clerk to the Council is Mrs Jenny Harrison (01829 752221). The AGM is on 20th June when a new Chairman is to be elected.

Oakmere Parish Council meets at 7.00pm at The Fourways on one Monday in the month. (again, August excepted). The outgoing Chairman is John Lynch; the new Chairman takes over from the end of May. The Clerk to the Council is Mrs Mary Carter (01606 883645).

Both councils would like to make it clear that parishioners are welcome to attend meetings. Dates and agendas of meetings are posted on the noticeboards at Delamere Stores (Delamere P.C.) and at the main road end of Waste Lane (Oakmere P.C.)

LATE NEWS

Community Policeman for Delamere and Oakmere

Thanks to a change of policy by Cheshire Constabulary from 13th June we will have our own community police officer.

PC3294 Robin Fisher is based at Mickle Trafford Police Office, but his brief is to concentrate on *this* area and to deal specifically with local concerns. He is clearly committed to the new challenge and has already begun to look into local issues.

Contact him on 01244 350222 or by e-mail:

robin.fisher@cheshire.pnn.police.uk

SWP ELECTRICS
TARPORLEY

SOCKETS LIGHTS REWIRES

*

NO JOB TOO SMALL WE DO THEM ALL

*

PORTABLE APPLIANCE TESTING (PAT)

*

PROMPT RELIABLE SERVICE

*

FREE ESTIMATES

*

REFERENCES AVAILABLE

*

Telephone 01829 781736 or 01928 740237

Stephen Warburton

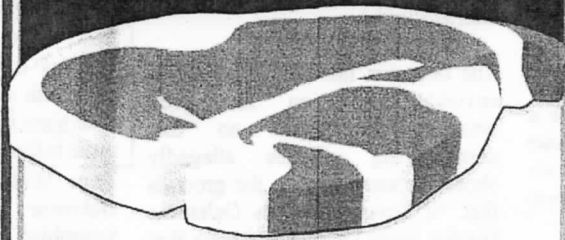
SWP Electrics

Common Lane

Duddon

Tarporley

**OUR REPUTATION
IS AT STEAK!**



DUTTON'S
Quality Meats

4a Church St, Kelsall

Opp. Dr Surgery

01829 751355



A letter from

Oakmere Methodist Church

Hello Everyone,

I am the Methodist Minister at Oakmere Church, Delamere. I also have two other churches in Kingsley, The Hurst and Blakelees. I arrived at Oakmere in September, 2004 and everyone made me feel very welcome.

Oakmere Methodist Church is new in some ways as well. It was built in 1913 and was the third Methodist chapel in the area. It is a typical small, country chapel. Oakmere was about to close a few years ago because of falling attendance.

However, a number of other chapels did actually close for the same reasons and these congregations joined Oakmere Church. Consequently Oakmere was brought back to life. A building project is now under way to improve the church's facilities.

The different congregations have gelled very well and there is a caring and friendly feel to the church. There is a Sunday service at 10.45 a.m. and the high points of the year are the Christmas and Easter services. Then, of course, there is the chapel anniversary held in the second week in February! We hold a number of services to celebrate the opening of the church and then we tuck into a very good tea! All are welcome! The church also has connections with St. Peter's C. of E. Church, Delamere.

Because both the church and I are new, we thought we would write a mission statement to declare our faith in God and to say how we hope to witness the Good News. Here it is:

We at Oakmere Church believe that God sent his Son, Jesus, to save us.

We hope to grow in faith and fellowship through worship and prayer. We hope to make our building and ourselves available so that others may come to know God in their lives.

Yours in Christ
Rev. Ann Kenton

The Methodist Church

will be holding a Circuit Service at 4.00pm on Sunday, 12th June, followed by a picnic tea. Some food will be provided, but bring your own as well. All are invited. Then on the following Tuesday (14th) there will be the Mid-Week Fellowship Meeting at 2.30pm.

Delamere Church

Fellowship meets in the Church Room at 2..30pm on the first Tuesday of the month. On the 7th June, however, the meeting will be at St. John's Church Ashton Hayes, when there will be a Strawberry Tea.

Further Delamere Church news appears in the monthly News from the Pews, which is distributed to every household in the parish.

Change of Date for the Church Garden Party

The date of the Delamere Church Garden Party, traditionally held on the first Saturday in July, has been moved to 25th June at the Fishpool Inn.

Originally called 'The Parochial Bazaar' the first-ever Garden Party was held at the old rectory on Wednesday, 15th July, 1914. (Further details of this and other events from the past will appear in later editions.)

The occasion has long enjoyed an enviable reputation for good weather, so much so that neighbouring villages allegedly chose the same day on the grounds that "it never rains on Delamere Garden Party Day". Let's hope that we're not tempting fate (or should it be fete?) by changing the date this year.

Football Tournament

Among the many attractions will be the Six-a-Side Football Tournament, now in its eleventh year, organised once again by Mike Gore and sponsored by Forster Dean Solicitors. Teams from, Bunbury School, Delamere School, Kingsley Cubs, Mickle Trafford Cubs, Tarporley Cubs, Tarvin School and Weaver Vale School, Frodsham will be trying to knock

last year's winners, Bunbury Cubs, off their pedestal.

Sideshows and Prizes Galore

Football apart, Mike has also applied his entrepreneurial skills to arranging a number of sideshows and obtaining several exciting prizes. Among these are tickets for a Manchester United Ground & Museum Tour, a £30 Voucher for Harringtons Leisure Shop, Sunday Lunch for Two at The Fourways, a Delamere Deli Voucher and many, many more.

First prize in the Grand Draw is a Meal for Two at The Fishpool Inn. If you are able to help with the sale of Raffle Tickets, please contact Mary Carter (01606 883645). If you can help in any other way, ring David Uinsworth (01928 788078).

Crufts Comes to Delamere

A Companion Dog Show

Bring your doggy to be judged by professional judges. Prizes awarded for different classes; if your pooch doesn't belong to any particular class, don't worry! It can still win a sympathy prize.

Make no bones about it, this is the dog show of the year.

Garden Party ~ From 2.00pm Saturday, June 25th Fishpool Inn Don't miss it!

Gloria Ackerley would like to thank everyone who supported the Network Gloria Quiz Night on 6th May. £306 was raised to support families in Romania struggling to cope with severe disabilities.

See www.networkgloria.org.uk for more information.

Tom Wright of Chrimes Drive, Oakmere has over the years assembled a wonderful collection of local photographs. He plans to publish a book of pictures of Delamere, Oakmere and Norley sometime towards the end of the year.

Tarporley Hospital League of Friends
Will be selling teas in aid of the hospital
at

Mount Pleasant Gardens

(see ad. on p.7)

on Bank Holiday Saturday &
Sunday (28th & 29th May).

Support a good cause and pay a
visit to these magnificent gardens
with their superb views.

The Fishpool Inn

Traditional Ales

Garden

Open: 11.30 – 3.00 & 5.30 – 11.00 Monday to Friday
All Day Saturday & Sunday

Food Served All Day at Weekends.

Senior Citizens Menus Available ~ £5.95

Telephone: 01606 889576

DELAMERE STORES

13 Station Road, Delamere, Northwich, Cheshire CW8 2HU
Tel: 01606 882226



A TRADITIONAL VILLAGE STORE AND POST OFFICE OFFERING AN EXTENSIVE RANGE OF FRESH PRODUCE/WINES AND BEERS. THE STORE HAS RECENTLY EXPANDED AND NOW OFFERS A FANTASTIC RANGE OF DELICATESSEN PRODUCTS, INCLUDING AN IN-STORE BAKERY AND A FULL MENU OF FRESH HAND-MADE SANDWICHES WHICH ARE PREPARED AS YOU WAIT.

COME AND VISIT US.

WE ARE OPEN 6AM – 6PM DAILY & 7AM – 4PM ON SUNDAYS

The Community Centre **Station Road Delamere.**

The Centre opened in 1972. Unless shown otherwise, all activities covered below take place here. To book the Centre for a function apply to Mrs Norah Sikorowski (01606 882485).

Badminton

There are two clubs:

The Tuesday morning (10.30 – 12.30) club plays just for pleasure. Contact Dennis Lorrinan for further details.

The Thursday evening (8.00 – 10.00) club plays in the Chester & District League. Matches begin again in September. The Secretary, Jane Wright, wishes to stress that they also play for pleasure, but more competitively. Contact Jane on 01606 882708. Both clubs would welcome more players.

Forest Art Group

This highly popular group meets for two hours every Monday morning to practise their water colour skills under the expert tuition of Fred Gardner. In the summer there are painting expeditions to sites of interest. Contact Fred on 01829 751907 if you would like more details.

On 3rd July each member of the group has been invited to exhibit two of their paintings at the Duddon & Clotton Flower Festival.

Bowls

For many years Delamere has had a strong and thriving Crown Green Bowls Club. Two teams, an A and a B, compete in each of three local leagues:

Norley Afternoon League (home days Tuesday);

Norley Evening League (home nights Wednesday);

Mid-Cheshire Evening League (Fridays).

Details of the teams' progress will appear in following editions.

Contact Gerald Merry (01829 733388) for club details.

Golden Age Club

The Golden Age Club, now in its 33rd year, meets on alternate Wednesdays.

Forthcoming Events:

1st June: Bingo.

15th June: An afternoon coach trip to Rushton Spencer near Macclesfield with tea at Sheila's Tea Room. The cost will be about £9 and there are still **vacancies for this outing**. Ring Jean Riches (01606 882094) as soon as possible for details.

29th June: A Talk by Donald Lodge on *My Life as a Butler*.

13th July: Salad Lunch followed by a Musical Afternoon.

27th July: A Visit to the Royal Exchange Theatre to see *Sex, Chips & Rock'n Roll*. **There are still a few places** on the coach for this trip. Again ring Mrs Riches

There will be no meetings in August.

Guides and Brownies

Shortly after coming to live in Oakmere in 2003 Elly Heffernan founded the 1st Delamere Brownies Pack and then in January 2005 the 1st Delamere Guides Unit was formed. The Brownies (7 to 10 years) meet every Wednesday from 6.00 to 7.30 pm; the Guides (10 to 14 years) meet from 7.30 to 9.00 pm. Both are thriving, so much so that there is already a waiting list. More news of the Guides' and Brownies' activities will appear in later editions. Meanwhile anyone interested in joining or learning more should contact Elly on 01606 888449.

Oakmere Cricket Club, Overdale Lane, Oakmere

Oakmere began their 52nd season with a return to their rightful place in Division One of the **Meller Braggins Cheshire Cricket League** – and began it in style with 1st XI victories over Mere and Wilmslow in their opening matches.

From a small bunch of enthusiasts gathering to play in a field in the early 1950s, the club now has nearly 100 fixtures for 2005 for its various teams (including a Ladies' XI) and one of the best-kept grounds outside the first-class game.

A fuller coverage of Oakmere's fortunes will appear in the August edition.

Women's Institute

Founded May, 1941.

Delamere W.I. meets on the second Tuesday in the month at 7.30pm.

Forthcoming Events:

14th June: June Grinney will give a talk on Crafts

12th July: Strawberry and Cream Evening at 7.00pm at the home of the President, Brenda Bailes, Grassendale, Abbey Lane, Delamere. Tickets £2.50

July 12th: Talk on Hidden Chester by Lyn Hand. Members are invited to bring items of local interest for a competition.

August: Trip to the Port Sunlight Museum.

New members welcome. Please contact Glenys Didsbury (01829 751645)

Bingo, Bridge & Snooker will all be covered later.....Plus any other clubs you can tell me about...

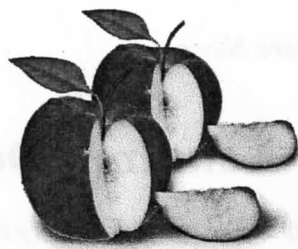
ACKOMATICS



WASHING MACHINES,
TUMBLE DRYERS
&
DISHWASHER REPAIRS

*Also New & Re-conditioned
Machines available for sale or
rental
Reasonable Rates*

**Call Paul on 07976 969223
Or 01829 760355
Cotebrook, Tarporley**



Cheshire Apple Juice

Cheshire's most pure and natural apple juice
made from the finest quality apples grown on
rich Cheshire Soils.

Ideal for a breakfast juice, or an aperitif
at any time of the day or night.

Choose from over 10 varieties
of apple juice all with their own individual
character and flavour.

No artificial colourings or preservatives,
no sugar is added.

Grown, Pressed & Bottled at Eddisbury Fruit Farm,
Kelsall, Cheshire. Telephone 01829 751300
www.eddisbury.co.uk



VALE ROYAL FARMERS' MARKET

**EDDISBURY FRUIT FARM
YELD LANE, KELSALL**

**EVERY THIRD SATURDAY
OF THE MONTH**

20 Stalls Local Food & Craft

18TH JUNE 2005

16TH JULY 2005

20TH AUGUST 2005

**16th JULY is Vale Royal Farmers'
Market 5th Birthday**

MOUNT PLEASANT GARDENS

Yeld Lane

[Turn off A54 at Kelsall Traffic Lights and then right into
Yeld Lane]

Over six acres of landscaped garden

**OPEN TO THE PUBLIC
Saturdays/Sundays/Wednesdays
& Bank Holiday Mondays
until 28th September**

Admission £3

*Visitors can purchase a variety of homegrown plants and
seasonal hanging baskets or just spend time relaxing
and admiring the views.*

**CONTACT: Louise Worthington
Tel: 01829 751592 or 07971 086239**

News from Delamere School

I took over the headship at Delamere in January this year. I have been delighted with how the children and staff have made me feel most welcome. During my time at school we have had several exciting visits to a number of different locations, including Liverpool and Tatton Park. One of the children in Class I has decided to share her experience of a recent visit to Twickenham to watch two rugby matches.

I hope you enjoy reading it.

Steve Docking, Headteacher.

Twickenham is Trytastic!

Delamere School Visits the Home of Rugby

On Wednesday 27th April Delamere Primary School set off to an amazing trip to Twickenham. The children were really tired because they had to be at school for 6.25am. At 6.55am they reached Crewe to pick up Pebble Brook Primary School who went with them.

It was a long four and a half hour journey. The bus stopped at a service station mid morning for the children to rest. When they arrived at the stadium bags were checked, and the children were in for a treat watching two games of rugby and visiting the museum.

In an interview with Mr Docking, Headteacher, he said, "I really enjoyed the trip with the children. They were very well behaved. The Museum was very exciting, the trophies were magnificent, but I was surprised how small the world cup was. Today the home of rugby, tomorrow who knows what exciting events are in the pipeline."

Arriving back at 10.30 the children were exhausted. Everyone was tired, apart from Jessica and her laugh which had kept everyone awake all the way home. Everyone enjoyed the trip to Twickenham and they hope they go on another exciting trip again soon.

By Jodie

Another Delamere School Outing.

This time in 1952, probably to Liverpool. Some of the last of the seniors to attend the school, together with Headmaster Norman Ackerley (on the right) and the "new" Rector Howard Huggill (on the left).



How many can you identify?

THIS SPACE FOR SALE

Advertise in

Delamere & Oakmere News

for

£6.50 per Quarter Page

or

£12.50 per Half Page

every two months

*and reach a wide and discerning
reading public – over 600 households.*

[Ring 01829 752723 for details.]

Following editions will appear in:

August October December

Articles/Letters/Suggestions/complaints/ etc. Welcome

And, of course, offers of help with distribution.

Deadline for submissions: 15th of the preceding month – sooner, if possible.

Travel Information

Trains

from Delamere

to Manchester:

(Cheap Day Returns/
£7.95-Mon to Sat.)

dep.10.16 am arr.11.27am

then every hour until

dep.5.16pm arr. 6.27pm

from Delamere

to Chester

(Cheap Day Returns/
£3.95 Mon. to Sat.)

dep.10.31am arr.10.50am

then every hour until

dep.5.31pm arr.5.50pm

[N.B. These times apply until 11th June, when Summer Timetable due, but this was not available by 17th May. Northern Rail spokesman uncertain about possible alterations, but warns "anything can happen". No comment! Strangely, no info available "on line".

Buses

Whitegate Travel

Single Full Fare:£2.40

(Tuesdays only – to Northwich)

dep.Frith Avenue 9.20am

Eddisbury Hl Pk 9.30am

Abbey Arms 9.35am

then via Little Budworth, Whitegate,

Hartford to

Northwich Watling St. 10.37am Sainsburys

10.40am

Return to Delamere:

dep. Sainsburys 12.10pm

Watling St. Stand D 12.23pm

arr. Delamere 1.35pm

Arriva

[Route 82] Mon – Sat ~ to Northwich

opp. Abbey Arms 8.59am & then every hour until 6.39pm (-4 mins.at School)

[Route 82] Mon-Sat ~ to Chester

by Harringtons 7.40am & then every hour until 5.40pm (+11 mins. at School)

No.82 Buses leave Chester & Northwich at 5 minutes past the hour.

[Route 230] Mon – Fri ~ to Winsford

Top End of Kelsall : 8.05am,9.50am,

11.20am, 1.20pm & 3.25pm

Dep. Winsford

8.30am,10.15am,12.00pm,2.00pm & 4.35pm

[Route X20]Tues,Thur,Sat ~ to Cheshire

Oaks.Top End of Kelsall: 9.44am

Arriva Day Ticket:

Adult £3.30

Child £1.60

Conc.£1.65

Rural Bus Service

01606 871990

**To book a journey please ring the day before
you wish to travel**

Fare: £2.20 each way/ £1.10 concessionary.

Monday

9.00am Cote Brook, Utkinton, Delamere

to Winsford.

Return 12.00pm

10.30am

Cote Brook, Utkinton, Tarporley, Delamere

to Northwich.

Return 1.30 pm

Tuesday

9.00am Crowton, Norley, Delamere **to Winsford**

Return 12.00pm

12.30pm Crowton, Norley, Delamere

to Northwich

Return 3.00pm

Wednesday

9.30am Cote Brook, Tarporley, Delamere

to Northwich

Return 12.30pm

1.30pm Tarporley, Delamere, Utkinton, Cote Brook

to Winsford

Return 3.30pm

Other Routes

From Delamere Stn. ~ to Tarporley,

via Summertrees & Utkinton, (35 mins.)

& Whitchurch (79 mins.):

9.36am, 11.36am, 1.36pm, 4.36pm

From Delamere Stn ~. to Frodsham

(c.20 mins.): 10.30am, 12.26pm, 2.56pm.5.30pm*

*to Runcorn at 5.56pm

From Willington Corner ~ to Tarporley &

Bunbury (via Beeston & Peckforton):

11.47am, 5.01pm

From Willington Corner ~ to Chester:

9.33am, 10.32am,12.43pm,1.02pm.

The editor disclaims all responsibility for changes, cancellations, mistakes, breakdowns, leaves on the line, cows on the road – or almost anything else – in the above information.