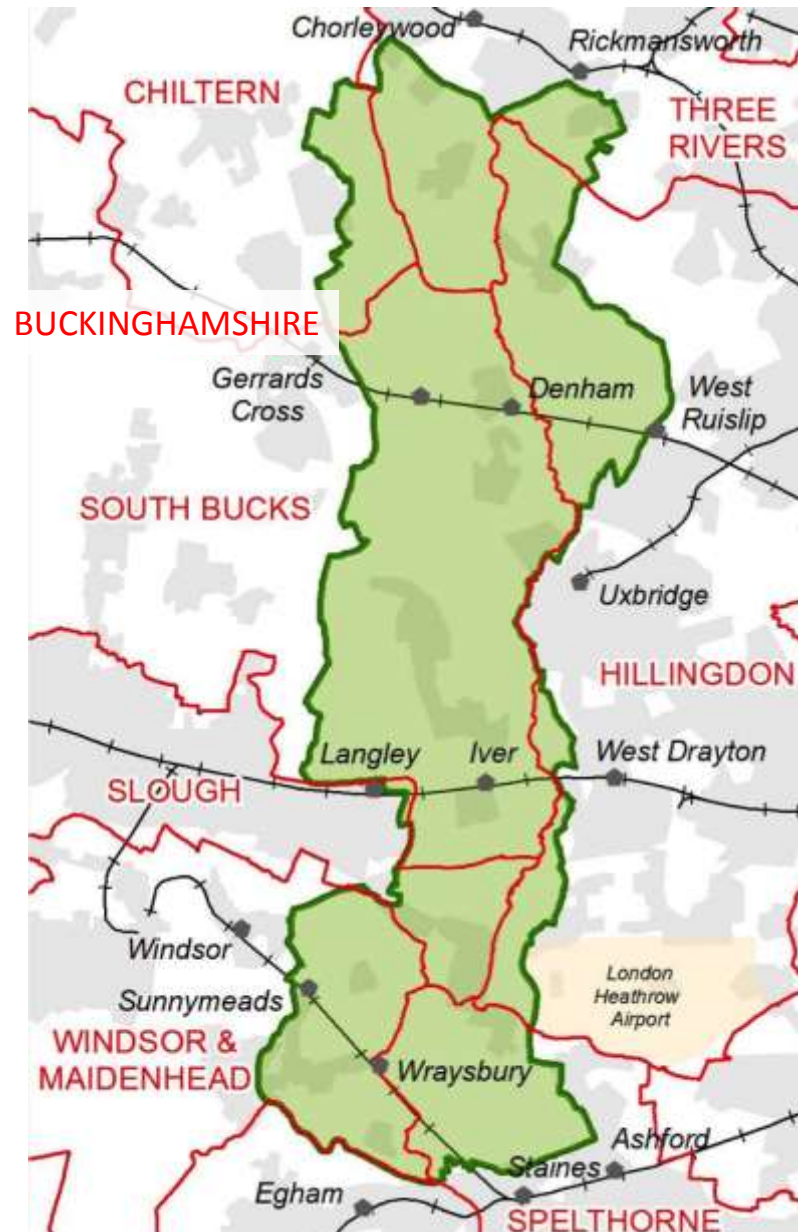


Colne Valley Regional Park



43 square miles

>3M people within 10 miles

70 lakes + 200km rivers/canals

100's of green spaces, 5 country parks, 20 Nature Reserves, 13 SSSI's

270km of public rights of way

CVRP - key to fulfilling the positive aspects of Green Belt policy

Key to physical and mental health, biodiversity & farming

Most pressured part of the (inner) Green Belt



Landscape
Recreation



Countryside
6 OBJECTIVES
Rural Economy



Biodiversity
Community



Members

Local Authorities

Buckinghamshire Council
Chalfont St Peter Parish Council
Colnbrook with Poyle Parish Council
Denham Parish Council
Horton Parish Council
The Ivers Parish Council
London Borough of Hillingdon
R B Windsor & Maidenhead
Slough Borough Council
Surrey County Council
Wexham Parish Council
Wraysbury Parish Council

Charities

Angling Trust
Buckinghamshire Conservation Trust
Chiltern Open Air Museum
Chiltern Society
Groundwork Hertfordshire
Groundwork South
Herts & Middx Wildlife Trust
Hillingdon Outdoor Activity Centre
London Wildlife Trust
National Trust
Rickmansworth Waterways Trust
Surrey Wildlife Trust
Sustrans
TCV

User Groups

Blenheim Angling Society
Bucks Natural Environment Partnership
Colnbrook Community Association
Colnbrook Community Partnership
Colne Catchment Action Network
Colne Valley Fisheries Consultative
Colne Valley Ringing Group
Denham Water Ski Club
Earthworks Conservation Volunteers
Eastcote Conservation Panel
Eastcote Residents Association
Fisheries Inn Angling Society
Friends of Great Barn Harmondsworth
Friends of Pinn Meadows
Friends of Slough Canal
Friends of Stockers Lake
Hillingdon Canals Partnership
Hillingdon Narrowboat Association
Hillingdon Natural History Society
Hillingdon Ramblers
Inland Waterways Association
Iver & District Countryside Association
Iver Heath Residents Association
Maple Cross & west Hyde Residents
Maple Lodge Conservation Society
North Harrow Waltonians Angling Society
Richings Park Residents Association
Rickmansworth Residents Association
Ruislip & District Natural History Society

Ruislip Woods Trust
Runnymede & Maple Cross Ringing Group
Slough Local Access Forum
Spelthorne Natural History Society
Three Rivers Joint Residents Association
Uxbridge Rovers Angling & Conservation
West London Group of the Ramblers
West London Model Aeroplane Club
Willowbank Association

Corporate

Affinity Water
Ambush Security
Coca Cola
Grundon Waste Management
Harleyford Valley
Lakeside EFW
Mad Squirrel Brewery
Thames Water

Statutory

Environment Agency

Friends of the Colne Valley Park



G.I. Strategy



COLNE & CRANE VALLEYS
GREEN INFRASTRUCTURE STRATEGY
SEPTEMBER 2019
EXECUTIVE SUMMARY



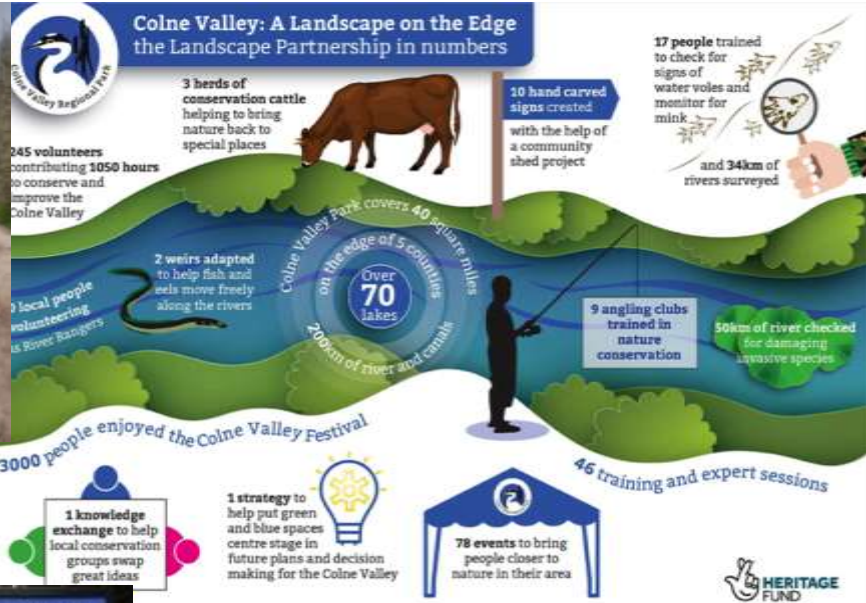
ARUP



FINALIST

Landscape Planning and Assessment Award

The good work to improve the Colne Valley as a resource for people and nature



Floating Pennywort Removal at Uxbridge Moor

We need your help to remove Floating Pennywort which is suffocating the River Colne in Uxbridge.

Friday 11th October (10.30-15.30)

Enterprise entrance. No registration needed.

Meeting Point: 11 Anandale Rd, Uxbridge, UB8 2JP

Confirm your place with Colne at: colne@heritagefund.org.uk / 01753 838003

All you need: suitable clothes and sturdy shoes/boots. We will provide: hand saws, rfid gear, and Debitos.

HERITAGE FUND

Please let us know if you are unable to attend by email or phone call: 01753 838003 and Debitos

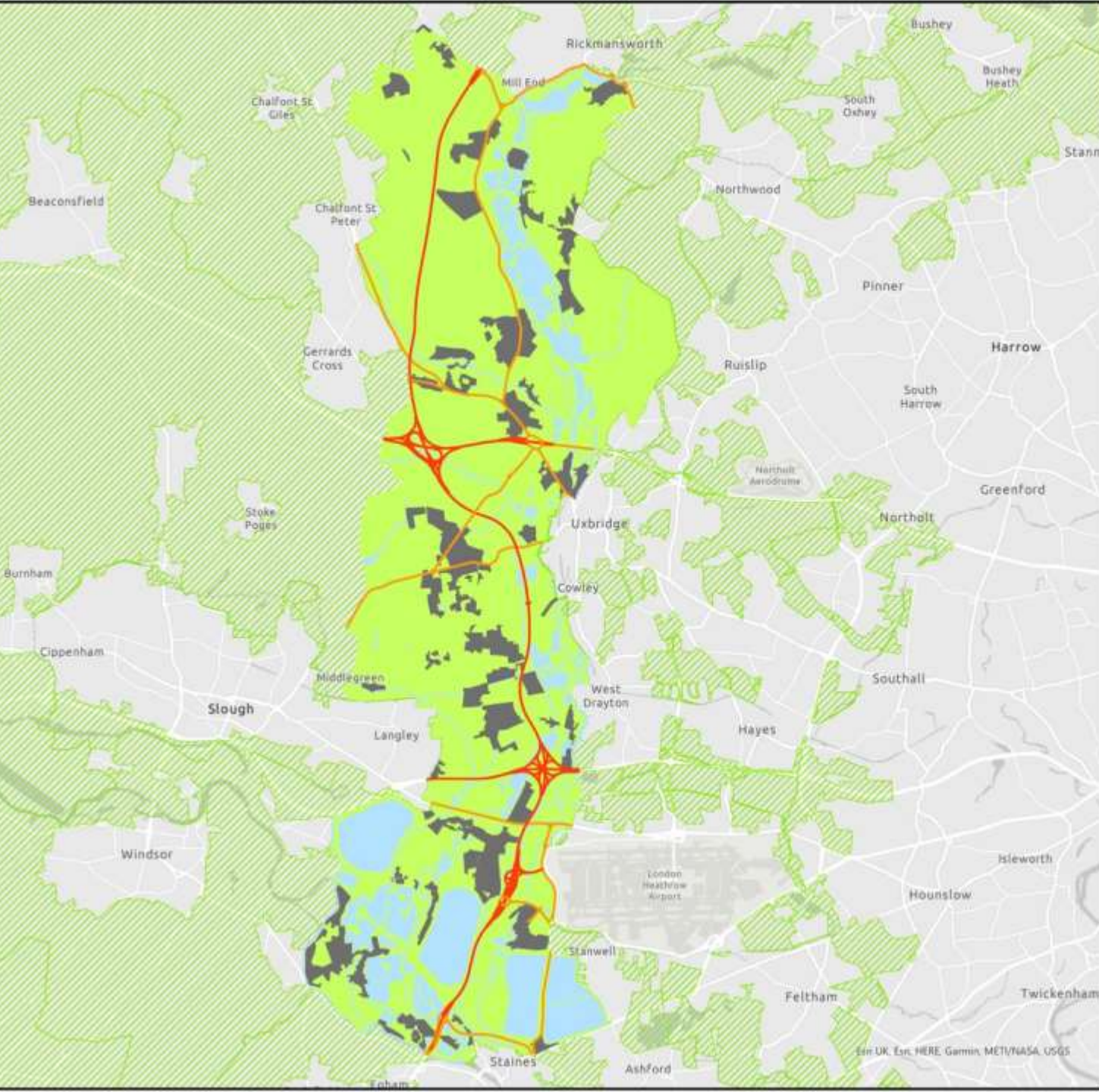
© 2022 HERITAGE FUND. All rights reserved. www.heritagefund.org.uk



Good work frustrated on a daily basis by so much (plus all the development proposals)



Colne Valley Regional Park (2018)

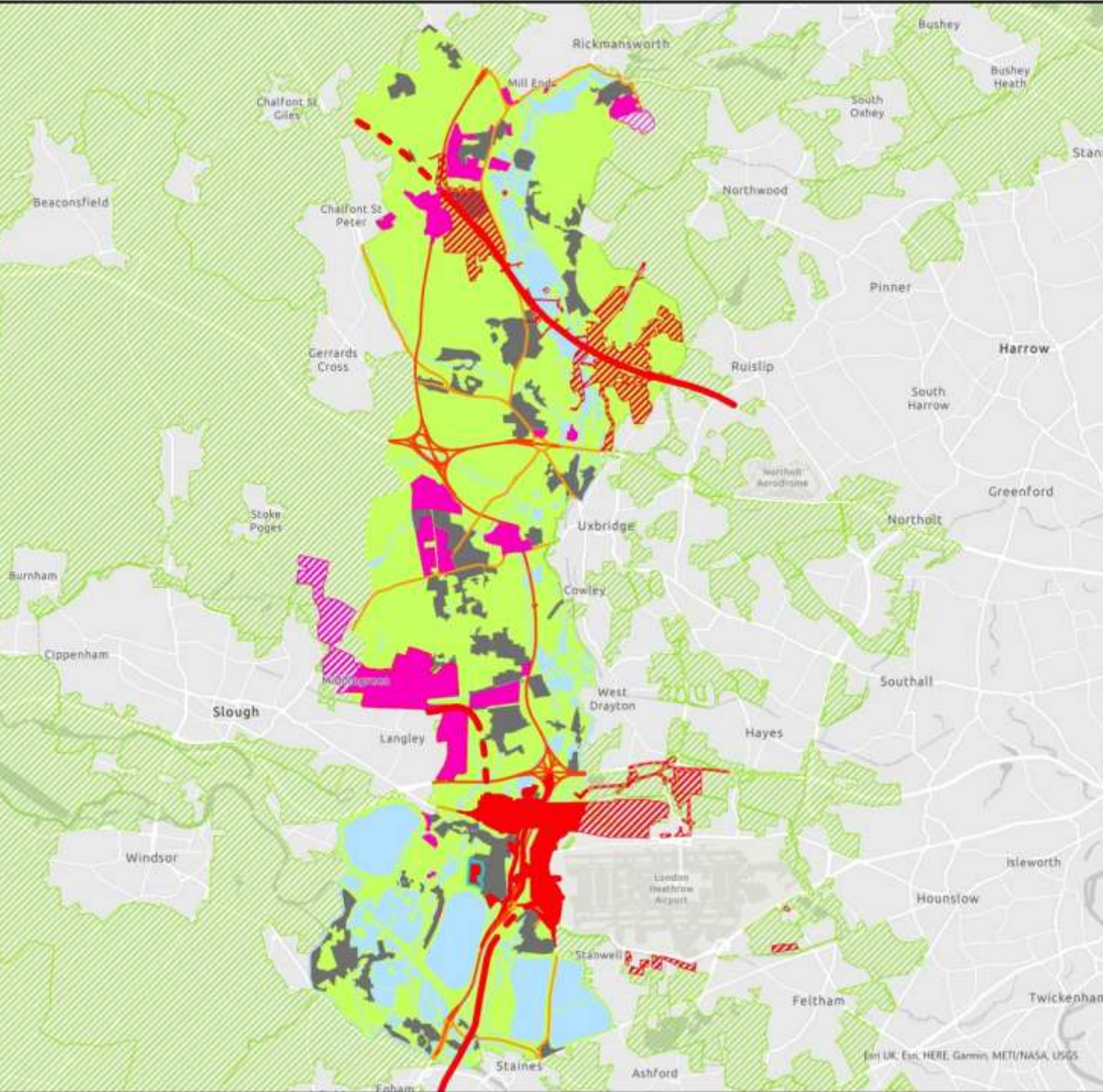


Contains OS data © Crown copyright 2021.
© Groundwork GDS 2021



Colne Valley Regional Park (The Future?)

Showing approved schemes (current Pinewood Studios expansion & HS2 works) and if planned proposals (from Local Authorities and others) are followed through



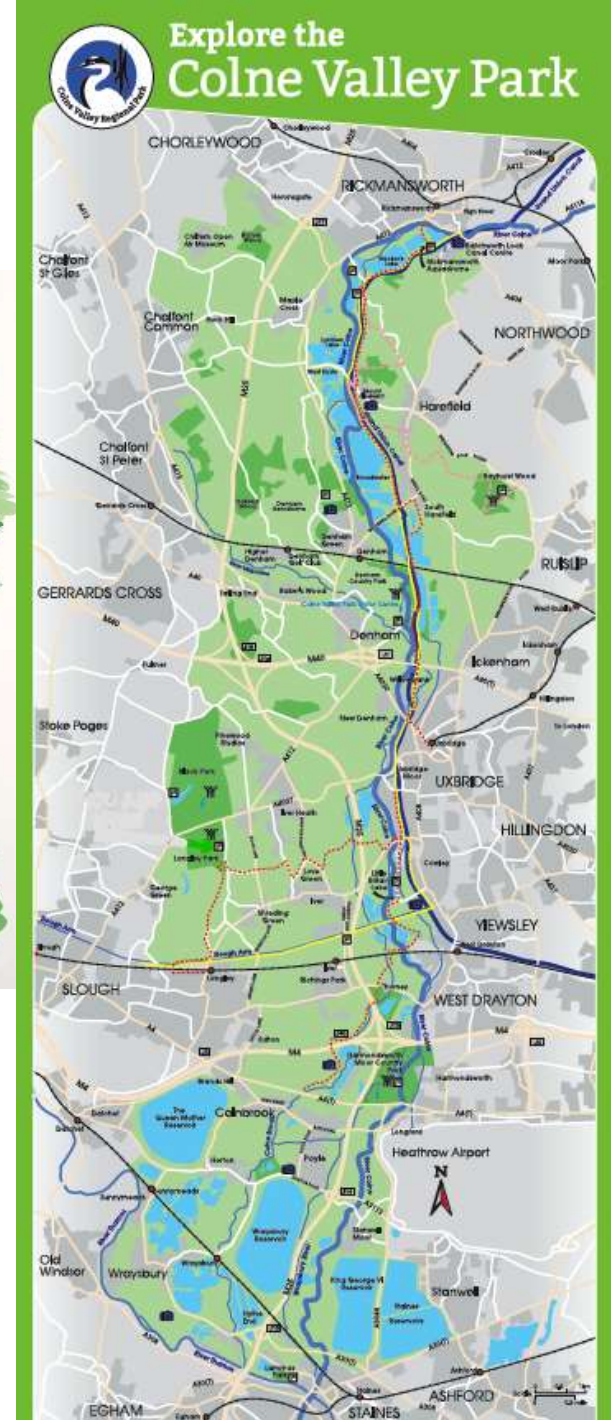
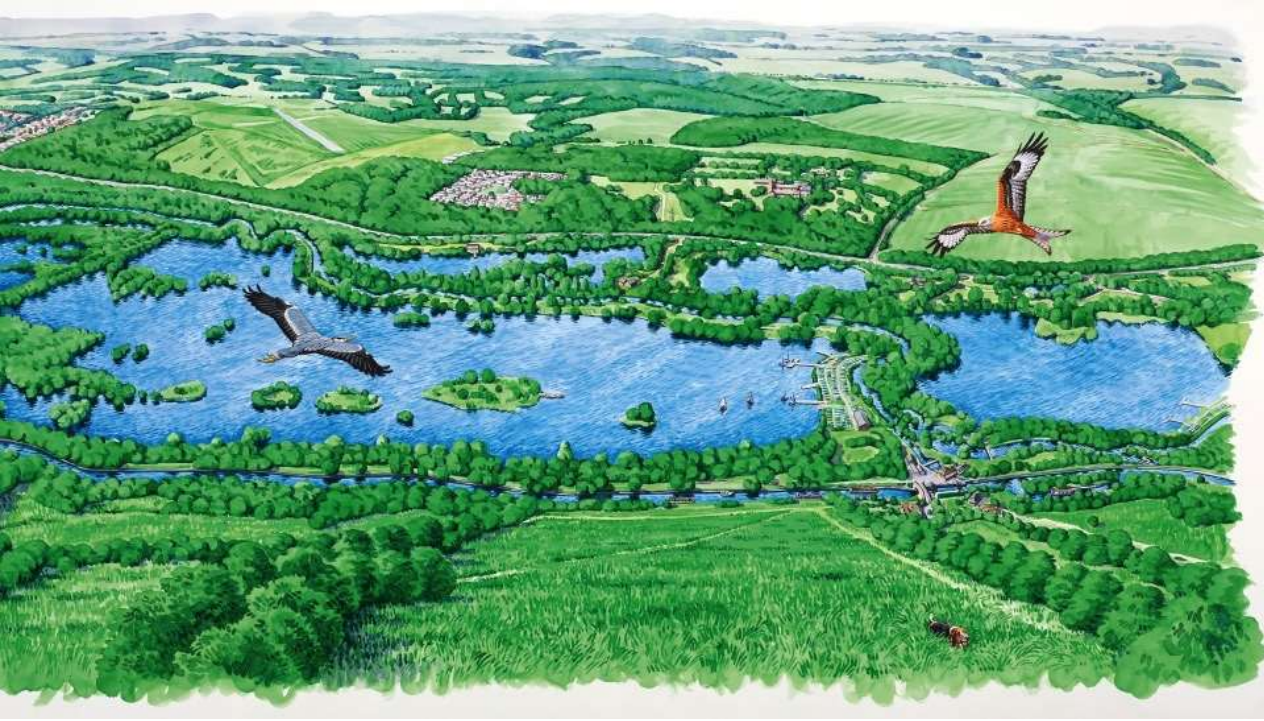
Contains OS data © Crown copyright 2021.
© Groundwork GDS 2021





£14 of projects for every £1 invested by local authorities and corporate supporters.

Thank You



www.colnevalleypark.org.uk

Follow on facebook & twitter.
Join the Friends of the Colne
Valley Park.