

South Kilworth News

July 2022



South Kilworth Directory

Name	Contact details	Description
Allotment Committee	Michael Langman 07811 111854	For the green-fingered aspirants
Bowls Club	Gerry Byrne 01858 575080	gerrypatrickbyrne@gmail.com keithrickhuss@gmail.com
Cafe	Tina Morley 07786496041	Café held monthly in the village hall - see posters around the village for details
Kid's football	Brian Robbins 07795105591	On the village hall playing fields
Kilworth Village Facebook page	https://www.facebook.com/groups/1052827924913620/?ref=share	Digital news and more
Korks (ladies only)	Contact Claire Hubbard 07590254043 to be added to the Korks WhatsApp group	A ladies social group from the Village meets monthly. Add your name to the mailing list.
Luncheon Club	Rita Hallam 575449	
Lutterworth Library	www.leicestershire.gov.uk/leisure-and-community/libraries/find-a-library/lutterworth-library	Use the free digital library services to download eBooks, eAudiobooks, eMagazines eNewspapers using a smartphone, tablet, Mac, or PC
Parish Council	Parish Clerk: Karen Brown parishclerk@southkilworth.co.uk	Meet on the second Tuesday of each month at 7:15 pm Chair: Phil Alcock 575978 philalcock@aol.com
SK Security WhatsApp group	Gary Aram 07799894207 Kate Millington 07990504734 Graham Rutter 07721442561	Alerts regarding security issues in the village are posted with a link to Community Police
Skittles Teams	Ray Dorman 07780846002 Tracey 07733235306 (Ladies team)	Games take place at the pub
South Kilworth Art Group	Maggy Roberts 07912031816 and 01858682173 magsroberts@yahoo.co.uk	Thursdays, 9.30 am to 12.00 Midday, Village Hall
South Kilworth Neighbourhood Plan	Contact the Parish Council	Information on the plan: www.harborough.gov.uk/directory_record/2256/south_kilworth_neighbourhood_plan
South Kilworth News	sknews@southkilworth.co.uk	Community news for the village – contact us with ideas & news.
South Kilworth Village Website	southkilworth.co.uk	Kevin Coyne: admin@southkilworth.co.uk
St Nicholas Church	Sharon March (Minister): 07889 88038 https://www.avonswift.co.uk/ https://www.facebook.com/avonswiftbenefice	Administrator: Karen Morgan: 01858 882032 PCC Secretary Joanna Wilson: 01455 558 372 Email Joanna.wilson17@btinternet.com
Table Tennis	Bob Morley 575832 bobjmorley1953@gmail.com	Thursday at 7 pm in the village hall
Travelling lunch club	Alison Anderton: 0870 240 6993	Lutterworth Age Concern currently has two travelling lunch clubs, travelling to a different pub each month.
Village Email circulation list	southkilworthlist@gmail.com	Send an email to become a member of this list - Note it is a postbox and so it doesn't reply! If you send something through for circulation, please put contact details on the email. Email addresses are never shared and cannot be used for commercial purposes.
Village Hall Committee	Chair Mark Tottman:01858 575157 07990813784	Village Hall bookings contact: Gail on woodgail11@icloud.com or 01858 575064
Women's Institute	Gaye Duncombe Tel 01858 880650 or gduncombe1@gmail.com	Combined with North Kilworth. 3 rd Thursday of each month at Belgrave Village Hall LE17 6EZ, North Kilworth at 7. 30 p.m.
Youth Club (SKY) (8-16yrs)	Ruth Cross (Youth Projects Coordinator) 07921 847347; Avril Da Silva (Play and Youth Work Leader) 07933899700.	SK Youth club meets in the village hall every Wednesday @ 6:45 pm

From the Editorial Team

The SK News is published every other month. The electronic version can be found on the South Kilworth website. Please send news, photos, and articles to sknews@southkilworth.co.uk. The submission deadline for the September edition is 15 August. News that does not coincide with the printed SK News can be uploaded to the South Kilworth website.



The Queen's Platinum Jubilee 5 June 2022

A big thank you to all who made the day a success – especially those who attended and made it the great celebration that it was. There was face painting, bouncy castle, welly wanging, football goal kicks and tug of war.

For the record, the kids beat the Dads! Thanks to the Village Hall committee members who worked hard to organise the day, the fun activities and manage the pub. Thanks too, to Joseph Morris Butchers for the donation of the delicious hog roast; the Community Café team who prepared the cream teas and ran the café and the Parish Council who provided the funding. Our front cover contains just a few of the photos taken on 5 June. Please see the Village website, <https://www.southkilworth.co.uk/>, for more photos that will soon be added.



All welcome for Cake and a Cuppa - Community Café 12 July 2022



The next Cafés will be held in the Village Hall on **12 July and 9 August 2022 from 11 am – 1 pm**. Pop in for a chat, take a short break if you are working from home or settle in for the morning!

It's not too late to participate in the Café feedback – we would especially like to hear from those that have not attended a Café before!

<https://www.surveymonkey.com/r/2H7ZSM7>

The links can also be found on the South Kilworth website



JOSEPH MORRIS

High Class Family Butcher

Home killed Beef, Lamb, Pork,
Poultry and Cooked Meats.
Home made sausages our speciality.
We now make our own Pork Pies,
Sausage Rolls and Pate's
01858 575 210



Chocolate Workshops

Have you ever wondered about having a go at making chocolates yourself? Well, now you can!

My chocolate studio in North Kilworth provides the perfect place in which you can make your own chocolates to take home with you.

Come with a group of friends or make new ones over chocolate. 2 workshop options to select: you choose how chocolatey you'd like to get!

Call Nenette on 07811 170633 or visit

www.nenettechocolates.co.uk



Nenette

HAND CRAFTED CHOCOLATES

Kilworth Accountancy

Experience counts

An accountancy practice in the village for all your accounting and taxation requirements.

Qualified accountant and tax specialist with over 35 years experience of routine compliance and the delivery of innovative solutions to strategic and taxation problems.

No charge for initial assessment.
Why not ask the Accountants in Kilworth?

Email
martinhav@kilworthaccountancy.co.uk
Or call
01858 575481 or 0791 865 1375

Focus on South Kilworth Primary School



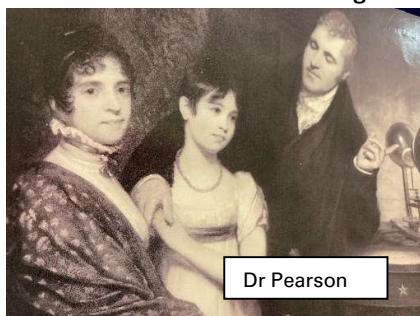
Located in the heart of the village, South Kilworth Primary School has seen many changes over the years, from the reign of Queen Victoria and the industrial revolution to two World Wars and the advent of the technology age.

It has educated many of the village's children – with generation after generation passing through its classrooms and corridors, placing their coats upon family pegs and joining in with the school traditions of Easter egg rolling, May Pole Dancing and Harvest time. The building itself



has had several incarnations, extensions and alterations – from a building with 'low ceilings and poor ventilation' in the 19th century to housing an Austin 7 in the 1920s, to today, where it has amazing classroom spaces for over 60 bright, enthusiastic and engaging children.

As a thriving, modern primary school that is part of the Learn Academies Trust (one of 11 schools across south Leicestershire), South Kilworth Primary School welcomes children aged 4-11. With a purpose-built foundation classroom that gives the younger children their own space to learn through play, as well as its new Woodland Hall for communal activities like drumming workshops, PE lessons, lunches and PTA events, it is a far cry from its origins in the 1720s.



Originally housed in the Church, the school served to 'improve the morals of the poor and prevent the spread of subversive views' as part of the Society for the Propagation of Christian Knowledge. The school stayed at the Church, educating the young of the village, including '10 poor children a year', until 1834. It was in this year, that the then Rector, Dr William Pearson applied for a grant to erect a school building 'for not less than forty-five

boys and thirty-five girls, aged 7 to 13. 28 of these were to be 'paupers', taught free, the others paid a 'trifle a week'.

The school was originally designed with two classrooms, one for girls, and the other boys, to be made of brick, with a slated roof and tiled floor, plus a playground and two privies. It was to be built on land 'granted by the parish in vesty...lately let for a cabbage garden.' The school was built, alongside a schoolhouse for the schoolmaster or mistress (paid for by Dr Pearson).

Fast forward to 1851 and the new Rector of South Kilworth, Assheton Pownall (Dr Pearson has died in 1847), wrote again asking for financial aid as the number of children being taught had risen. He stated that while the village was poor and could not afford monetary contributions, they would provide transport and materials for free. Through a combination of grants and donations, the money was raised.

Local builders, R and J Law of Lutterworth were commissioned to build the new school rooms, complete with brickwork of 'black headers of Nuneaton brick to be worked into the approved pattern.' Alongside this, a 7lb bell with rope and pulley, desks and benches secured to the floor and beams of Baltic Pine or English Oak were to be installed. While the desks and benches have been replaced with tables and chairs, the rest of the school's wonderful history is visible to see – especially the brick design and the inscription on the wooden beams of Anno Domini 1851. In 1858 the schoolmaster's house was rebuilt and enlarged, using the same brickwork design and patterning as the school room.



In 1902, the Education Act transferred the secular education of children to the local authority – meaning children from the age of 5 – 14 could attend school. For South Kilworth this again meant a classroom expansion, and plans were drawn up for a new infant room, with a corner fireplace, another cloakroom for 50 children, and new toilets as the local authority would not approve of ‘two seats on one toilet’.

Thanks once again to money granted from the National Society, the school opened on 13th January 1908 with the new alterations in place. It also had a new Rector, the Rev Bryant, and was known as South Kilworth Church of England School, number 206. It opened with 52 ‘mixed’ and 24 ‘infants’.

Throughout its history, the school has welcomed and benefitted from a great host of Head Teachers, and in particular a notable number of Head Mistresses all in succession since 1905. Today our Head of School is Mrs Kerry Willars and our Executive Head is Mrs Heather White. In 1905 Miss Smith took up the post of Head Teacher, followed by Miss Cooper in 1919 (she was permitted to convert the old infant room, adjoining the school house, into a garage for her Austin 7) and in 1929 by Miss Lloyd, who stayed in the post for the next 31 years. She was followed by Miss Edith Morse and Mrs Saxon 21 years later, and Mrs Martin in 1996. Her daughter was a pupil at the time and now her granddaughter is at the school – hanging her coat on the peg her mother once used. She told us: *‘I’m very lucky because my Nana and my mum went to this school. My mum’s brothers and sisters went here too and my cousins!’*



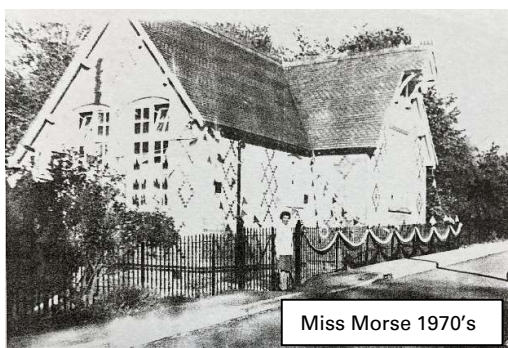
It was during these years that many of the school’s traditions were formed – the choosing of the May Queen, the youngest girl in school who dresses in flowers and welcomes in Spring, is still re-enacted today; along with the May Pole Dancing, the Easter Egg Roll (down the slope in the courtyard) and Harvest Festival – echoing a time when the school closed for 3 weeks to allow the children to help bring in the harvest.

On the day of the Queen’s Coronation in 1953, the children had three days off school for tea parties and celebrations.

In recent weeks our own Platinum Jubilee Celebrations saw history repeating itself as the school once again hosted a tea party for the community with outdoor games. And with the event falling during Half Term, the children once again didn’t have to attend school!



In 1959 the school changed its name to South Kilworth Church of England Junior and Infant School, number 3058 and received for the first time, indoor toilets. At that time, it had 34 children on roll but only 28 pegs for their coats and bags.



The late 1970s finally brought school dinners to South Kilworth, something the parents had voted for 12 years previously. Today we are lucky enough to receive delicious, freshly cooked meals that the children adore, as well as free fruit and vegetable snacks for our younger pupils.

During the 1980s the school continued to reconfigure its spaces and Miss Cooper’s garage once again became a cloakroom. In the 1990s the school adopted a uniform and logo – the Oak Tree which symbolising the ‘growth of knowledge and growth of children’.

Evident around the school on jumpers and cardigans today, it can also be seen in the Woodland Hall mural.

Since its inception in 1720, the school has had 9 names, over 22 Headteachers and seen thousands of children educated. Its reputation is as a caring, committed school that works hard to develop its children and their interests. It places great emphasis on outdoor learning and giving children the space to grow into themselves. As one pupil put it, “I love my school. It’s where my friends are and where I belong.” And as the school motto rightly says, ‘Tall oaks from little acorns grow’.



Georgie Willock
Communications and Engagement Coordinator



South Kilworth Primary School May Fayre 2022 – including the new May Queen (the youngest girl in school is always asked) and the children dancing around the May Pole.

“The event was a great success and everyone had much fun – it was lovely to see everyone back in school, enjoying the sunshine, stalls and entertainment. The event raised over £1600 which will be used to help provide additional items for the children throughout the school year. Thank you to everyone who attended.”



Appeal for Ukraine



Some of our readers will have noticed this recent appeal made by Alec & Steph Wilson. We decided to ask them how they became involved with this effort and Alec gave us this account:

“Our grandson Bowen is a pupil at Fleckney Primary School. Together with a couple of his friends and a teacher, they have been responsible for collecting vital supplies from the Fleckney community and delivering them to a Ukrainian support group at the Ukrainian Church in Peterborough - Stand with Ukraine - <https://www.facebook.com/groups/649953096312493>

I went on one such mission with Bowen, his teacher and friends, to help deliver supplies to Peterborough. Whilst there, I met a Ukrainian lady who had just escaped from Sumy in the east of the country, very close to the Russian border. Her story, so harrowing, made a great impression.

Natalya’s son who is a regular in the Ukrainian army, sent her a message at the start of the war - “Mother, erase all of my details, contact, photos, everything, from your phone. If the Russians take you and find this information on your phone they may imprison you, even murder you!”. Because Natalya followed her son’s instructions, she had no idea of his whereabouts or well-being - even if he is still alive.

She then hid in a cellar for many weeks, witnessing pillage, rape and murder by the retreating Russian soldiers - young conscripts under the influence of drugs and or alcohol and completely out of control. They had behaved relatively well during their advance into Ukraine but changed, as described, during the withdrawal.

She then escaped to the UK, alone and with nothing and not knowing whether her son was alive, wounded, captured, or even dead. Whilst fleeing by vehicle, she witnessed women and children, in civilian-marked family cars, being machine gunned - resulting in an unknown number of casualties.

Impressed with her fortitude and the plight of so many millions of displaced people, especially women and children, Steph and I decided to help in the best way we could by asking our family and local Kilworth community to donate items as per the list from ‘Stand with Ukraine’.

It was reasonably successful and we delivered a car load to Peterborough. But as the crisis continues and to a certain extent, fades from the news limelight, much more is still needed.”



Alec, his grandson Emlyn & Nataliya (not the same person as in the report)

If you would be kind enough to donate any items from the list which can be found on the South Kilworth website <https://www.southkilworth.co.uk/notice-board/ukraine-appeal> please call Alec or Steph on 01858571086 and we can collect. Alternatively, drop them off at Hemploe View (last house at the bottom of the Belt). **ONLY NEW ITEMS PLEASE.**

Thank you so much. Alec & Steph Wilson alec@willoughby-house.co.uk

JOIN THE SOUTH KILWORTH ART GROUP



Meeting every Thursday morning in the Village Hall, the South Kilworth Art Group enjoy a peaceful, yet convivial, time creating Art using a variety of styles and mediums. We are all amateurs and every month we have a "Challenge" to inspire us to create work outside our normal comfort zone.

We managed to continue our work online during the Covid Lockdown and have been surprised by the impressive results. Experts and complete beginners are welcome to join us.

Please contact Maggy Roberts in the first instance: magsroberts@yahoo.co.uk Tel 07912031816

JR Pest Control 

Ants | Bed Bugs | Bees | Cockroaches
Fleas | Mice | Moles | Moths
Rabbits | Rats | Squirrels | Wasps

Comprehensive Pest Control Service
Residential, Commercial, Industrial & Farms
Evenings, Weekends & Emergency Callouts
Investigation, Control & Prevention
BPCA Qualified & Fully Insured

Tel: 07967 821421
E-mail: enquiries@jrpestcontrol.co.uk

BARRY JONES

Electrical Contractor

- No job too small
- Free estimates
- Reasonable prices
- All work guaranteed

Stonebridge House, Black Lane
Shearsby 0116 247 8077
Mobile 07831 474700

Totally Trees Ltd

Pruning - Felling - Stump removal
Tree Surgery

01455 554182
www.totallytrees.co.uk
info@totallytrees.co.uk

 Kindling
Hardwood logs 

 **TRUSTMARK**
Government Endorsed Quality

The Hollies Bed & Breakfast South Kilworth







Host Tim Mills would love to welcome visiting family and friends of South Kilworth residents to his lovely 200-year-old upmarket bed and breakfast guest house and venue. Situated next to the pub, Tim has 6 beautifully appointed smoke-free guestrooms with all the expected amenities, including a barbecue and a terrace area. He offers a Full English/Irish breakfast daily.

There is no excuse for not having family and friends over for a visit with this home from home location on our doorstep. Please call Tim on 07811 652267 or email: Mills.Tim3@icloud.com to check on availability.



KORKS - Village Ladies' group

All ladies are welcome to join. You need to join the KORKS WhatsApp group to find out about events. You will be notified at least a month before the event of all the details. You can then sign up for the event if you are interested. If you are not on the KORKS list please WhatsApp Claire on 07590254043 to be added.

Month	Activity
July	Walk to North Kilworth pub
August	Gin tasting at Little Acorns
September	Long alley bowling at Bulls Head Cosby
October	"Pop up" Bistro at Lynton Come and cook your own supper (or just watch)!
November	Wreath making - with The Plant Yard /Pink Peony (Gail)
December	Christmas Dinner. Grey Goose /Attic? etc
January 2023	Aromatherapy



KORKS Bowls Event May

South Kilworth Bowls club sits nestled beside the village hall, in the heart of our community, and their sign, next to the entrance, offers a warm welcome to all. There was certainly a warm welcome for the Ladies of Korks, who gathered to learn the intricacies of the game from John Wilson, a club member, one evening in early May. It was a fine evening, the sun shone, and there was much fun and laughter as some 10 ladies rolled down their bowls to that elusive jack. Like many sports, bowls can be harder than it looks, but many soon mastered the skills, and a mini-tournament then ensued. Perhaps everyone was a winner on the evening, and it was certainly celebrated with a Bowls club supper and a glass or two of Prosecco afterward. The verdict? An absolute Bowl, (or was that Ball) - **Colin Derrick**



Photos: Kate Pearson & Toni Snell

KORKS Loros Walk Event June

For some years, many ladies have gathered to take part in a 'Twilight Walk' around the streets of Leicester, individually, and collectively raising substantial funds for this vital charity. The Loros Hospice which is based in Glenfield, has been an important refuge over the years for many in their moment of crisis, and a source of comfort for all, both patients and family, affected by the end of life. This valuable fundraising event, like many, because of the Pandemic, was initially suspended, and because of crowds, difficult to resume. One evening in early June, the KORKS came together to support this initiative. 12 ladies set off from the village, and walked around the Stamford reservoir, (with the kind permission of Severn Trent). They looked resplendent in their Loros 'Twilight' T-shirts, and sporting Tiaras. The weather was kind, the sun shone, funds were raised, and fun was had. And, weary, but happy on their return, the ladies enjoyed supper and a well-earned glass of Pimms! - **Elaine Derrick**



Birds - Stanford Reservoir

Stanford Reservoir: As we moved into June, lots of species are well into their breeding cycle. Little Grebe, Mute Swan, Mallard, Gadwall, Grey Heron, Canada Goose, Greylag Goose, Coot and Moorhen to name but a few have all been observed with young. Warblers are also in full swing and there have been 3 Cuckoos around the site for several weeks – hopefully, it won't be too long before we see young ones.

We only have one tern raft in operation so this is proving very popular with several pairs of Common Tern with at least 3 young observed so far. Rafts are critical at sites such as Stanford, offering the terns a safe predator-proof area for breeding.





White-tailed Eagle number 2: I mentioned in my last article that we had a satellite-tagged White-tailed Eagle pass over the reservoir in March but unfortunately, this was not seen by anyone. With these birds roaming widely I did wonder if we would get a second chance at some point. Well, that second chance arrived on Saturday 16th April when a White-tailed Eagle flew low from the direction of Shawell and over my head whilst I was walking along the bottom of the dam. The sheer size of the bird was incredible, made even more obvious when it settled in a row of trees and was mobbed by Buzzards – they were tiny in comparison. From the satellite data I received later that evening (courtesy of Tim Mackrill at the reintroduction programme), it was obvious that the bird was roosting overnight in the small wood close to the reedbed. Several of us were there at first light to see the bird leave its roost site – at that stage, it looked like it had departed but data received at 09.00 from Tim showed it was still in the area. I then re-found the bird close to the canal and watched it for well over an hour before it headed south – an incredible sight as it flew off being mobbed consistently by Buzzards, Red Kites and Crows. This was actually a different bird to the one that passed over on 28th March – it was G819, a second calendar year female.

Black-tailed Godwit: With the water level down slightly, I was hoping for some passage waders over the next few months. On 16th June a quick lunchtime check produced 3 Black-tailed Godwits in front of the hide. I headed off round there to try to get some images and thankfully they were still present when I got to the hide. They are definitely one of my favourite waders and a species that I haven't seen at Stanford since 2018. So, a great addition to the 2022 list for the site which is now at 131.



Black-tailed Godwits have 3 distinct 'forms' or races, 2 of which occur in the UK. The vast majority that we have seen previously at Stanford are of the form *icelandica*. However, the 3 on Thursday were of the much rarer form, *limosa*. The breeding stronghold for *limosa* is the Netherlands with much of the remaining population spread across central and eastern parts of Europe. A relatively stable (although small and declining) breeding population remains in and around the Ouse and Nene Washes.

Chris Hubbard c.hubbard2@icloud.com

News from the Avon Swift Group of Churches

Here in Leicester diocese, we are now well underway with the first group of churches piloting the process to form a 'Minster Community'. Churches from 6 benefices around the Launde area were invited into this process and all have chosen to take part. People from each local church are undertaking some initial work that enables us to build up a picture of ourselves that is honest and grounded in reality. As we do this and learn from each other, we will begin to develop an identity as a Minster Community and will be able to engage in conversations for our next steps. These will include discussing our future mission and consideration of our assets – people, buildings, and finance.

A group of churches around the Coalville area has now been invited to be part of piloting the process as we form a second Minster Community. (All our congregations will be invited to be part of a Minster Community by 2026). We are encouraging all other churches to engage with the Discussion Starter sent out to PCCs in February. The biggest thing we have learnt so far in the pilots is that the preparation is really important and takes much longer than you might think! The more honestly and deeply any church understands itself, its calling and mission, and its relationships (with the local community, other churches, and more widely), the better prepared the church will be for beginning to form a Minster Community when the time comes.

Further to this, we encourage churches to consider how they can develop partnerships to support each other in mission and ministry. We must all remember our diocesan vision is not Minster Communities, our diocesan vision is to grow the Kingdom of God. We will continue to discern together how the Minster Communities framework will best support all our churches. Please pray for all the clergy and lay leaders in churches engaged in forming Minster Communities and the volunteers and staff supporting and facilitating the process; particularly for wisdom and attentiveness in discernment, courage, and creativity in imagining the future, and humility and generosity in developing relationships.

Sharon March

AVON SWIFT Group of Churches SERVICES July 2022

Sunday 3rd July St. Thomas the Apostle **RED/GREEN**

Lectionary Page: 993 Habakkuk 2. 1 – 4 Ephesians 2. 19 – 22 John 20. 24 - 29

9.30a.m.		Stanford on Avon	Holy Communion (CW)	Rev. Canon B. Davis
11.00 a.m.		Gilmorton	Holy Communion (CW)	Rev. A. Micklethwaite
4.00 p.m.		Peatling Parva	Songs of Praise	Local Team

Wednesday 6th July

7.30 p.m.	Shawell	Compline	Local Team
-----------	---------	----------	------------

Sunday 10th July 4th after Trinity **GREEN**

Lectionary Page: 839 Deuteronomy 30. 9 – 14 Colossians 1. 1 – 14 Luke 10. 25 - 37

8.30 a.m.	Kimcote	Holy Communion (BCP)	Rev. A. Micklethwaite
9.30 a.m.	Swinford	Holy Communion (CW)	Rev. D. Hebblewhite
11.00 a.m.	Misterton	Holy Communion (CW)	Rev. D. Hebblewhite

Sunday 17th July 5th after Trinity **GREEN**

Lectionary Page: 845 Genesis 18. 1 – 10a Colossians 1. 15 – 28 Luke 10. 38 - 42

9.30 a.m.	North Kilworth	Holy Communion (CW)	Rev. Canon B. Davis
11.00 a.m.	Peatling Parva	Holy Communion (BCP)	Rev. A. Micklethwaite
6.00 p.m.	Shawell	Holy Communion (CW)	Rev. Canon B. Davis

Sunday 24th July 6th after Trinity **GREEN**

Lectionary Page: 850 Genesis 18. 20 – 32 Colossians 2. 6 – 15 (16 – 19) Luke 11. 1 - 13

8.30 a.m.	South Kilworth	Holy Communion (BCP)	Rev Canon B. Davis
11.00 a.m.	Catthorpe	Holy Communion with Baptism	Rev. A. Rhoades
11.00 a.m.	Ashby Magna	Holy Communion (CW)	Rev. T. Colling

Sunday 31st July 7th after Trinity **GREEN**

Lectionary Page: 856 Ecclesiastes 1. 2, 12 – 14; 2. 18 – 23 Colossians 3. 1 – 11 Luke 13 - 21

10.30 a.m.	Shawell	Benefice Group Service	Rev. T. Colling
------------	---------	------------------------	-----------------

Wednesday 3rd August

7.30 p.m.	Shawell	Compline	Local Team
-----------	---------	----------	------------

Sunday 7th August 8th after Trinity **GREEN**

Lectionary Page: 861 Genesis 15. 1 – 6 Hebrews 11. 1 – 3, 8 – 16 Luke 12. 32 - 40

9.30 a.m.	Stanford on Avon	Holy Communion (CW)	Rev. D. Hebblewhite
11.00 a.m.	Gilmorton	Holy Communion (CW)	Rev. D. Hebblewhite
4.00 p.m.	Peatling Parva	Songs of Praise	Local Team



vT Tuition
YOUR LOCAL TUTOR

Would you like your child to:

- Have greater self-confidence?
- Catch up with their peers?
- Be challenged further?
- Ace their exams?
- Love learning?

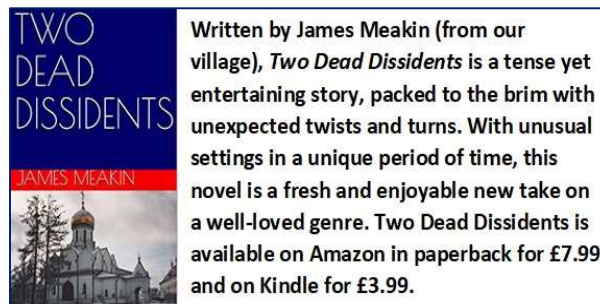
Ages 7-13
Maths & English

- Headteacher
- Maths Subject Leader
- English BA (Hons) 2:1

CONTACT ANDY TODAY!

WHATSAPP: 07533 144666

WWW.FACEBOOK.COM/VTTUITION



TWO DEAD DISSIDENTS

Written by James Meakin (from our village), *Two Dead Dissidents* is a tense yet entertaining story, packed to the brim with unexpected twists and turns. With unusual settings in a unique period of time, this novel is a fresh and enjoyable new take on a well-loved genre. *Two Dead Dissidents* is available on Amazon in paperback for £7.99 and on Kindle for £3.99.

JAMES MEAKIN



KILWORTH PRE-SCHOOLERS

A space for parents and children to meet.

Thursdays 10-11am
St Andrew's Church, North Kilworth

Toys and refreshments provided
A £1 voluntary contribution per child is appreciated

Contact Sophie - 07841 215300 or Sharon - 07889 488038 for details or just come along!



Minuteman Press Lutterworth
WE DESIGN, PRINT & PROMOTE...YOU!

- Business stationery
- Large Format
- Wedding stationery
- Labels
- Menus
- Invites
- Promotional Items
- Design Services

and much more

Offering a hassle-free, cost-effective, single source print solution with free delivery to local businesses

We go over and above usual customer service

We come to you to discuss your personal print requirements

10% off your first order

01455 207 508
lutterworth@minutemanpress.com
www.lutterworth.minutemanpress.co.uk
14c High Street | Lutterworth | Leicestershire | LE17 4AD

Cycling from South Kilworth

As the summer weather is now here and the lockdown is well and truly behind us, you may be thinking about how to get out and enjoy the fabulous surrounding countryside – and one way to do this is, to use an infamous quote, ‘Get on yer bike!’

There are a couple of very different, but equally enjoyable options for cycling from South Kilworth. The more obvious option is using the roads and lanes that head out into the countryside, but an interesting alternative is to take advantage of the extensive network of bridleways that cover South Leicestershire and into Northamptonshire.

Although it has been curtailed by the pandemic, a local event that raised over £3,000 every year for the local Air Ambulance is the PieCycle – a bike ride that followed a route taking in the villages of Walcote, Gilmorton, Peatling Magna, Wistow, Hallaton, Medbourne, Great Bowden, Foxton, Laughton, Walton and back to South Kilworth. The PieCycle route followed the country lanes that connect these villages and running alongside this was the ‘Dirty PieCycle’, which followed pretty much the same route but using bridleways and off-road tracks – both routes manage to take in plenty of café stops for refueling! So hopefully look out for that (or any similar) event if you need the motivation of an altruistic goal.



There are also options that sort of sit between road and off-road cycling, such as the Brampton Valley Way, which connects Market Harborough and Northampton via a high-quality traffic-free cycling and walking path.



This lovely trail meanders through the countryside and makes for the perfect family day out. The route follows one of the longest dismantled railway paths in the country and was opened for recreational use in 1993. More details of this great route can be found by following this link: <https://www.sustrans.org.uk/find-a-route-on-the-national-cycle-network/brampton-valley-way/>

There are plenty of cyclists in South Kilworth – both road and off-road – so if you want any advice or support in finding equipment, routes, or company to cycle, chat with us or contact SK News and they’ll make sure to connect you with the right person.

Phil Alcock

South Kilworth Snippet

Kilworth Springs Golf Club

Over the past 12 months, Kilworth Springs has invested heavily in its facilities and will continue to do so. As well as Golf Course Machinery, they have enhanced the Driving Range Facilities by adding Trackman Launch Monitors in all Bays. This gives the user an opportunity to practice, play a round of golf on a number of World-Class Courses (virtually) and Play Fun Games. You do not need to be a golfer to enjoy this facility and it is fun for all ages.

General Manager, Mark Phillips, and his team are also proud of the newly refurbished function room in the Clubhouse Bar and would like to remind everyone that Kilworth Springs is open to all and not just golfers. It offers bar food & drink throughout the week with internal and external seating. It can accommodate events like Family Get-Togethers, Birthday Parties, Wakes and Weddings from 30-150 people. They have various menu options including 3 Course Meals and Hot & Cold Buffets. Mark says: “If you are looking for a bar meal, a cold beer, or a Gin & Tonic, why not come and join us? We hope to see more locals pop in and see our facilities as we always want to be part of your community.”



Contact Us Today

Join the family of Home Instead CAREGivers and help make the world of difference.

- ✓ Award winning training
- ✓ Flexible hours
- ✓ Great rates of pay
- ✓ Make a difference to older people's lives

Contact us on: 01455 247100
www.homeinstead.co.uk/rugby

Each Home Instead Senior Care franchise office is independently owned and operated

DRAFT MINUTES OF THE ANNUAL MEETING FOR SOUTH KILWORTH PARISH COUNCIL

Held on Tuesday, 14th June 2022, 7.15 p.m. Minutes Ref: 817/0622

1.0 To Confirm Members Present

Cllr P Alcock (PA) – Chairman

Cllr T Wood (TW)

Cllr K Coyne – Vice Chairman

Cllr G Byrne (GB)

Cllr E Derrick (ED)

Mrs K Brown (KB) – Clerk

2.0 To Receive Any Apologies

None

3.0 Disclosure of any Member's Interest/s

None

4.0 To Confirm Other Attendees

3 Parishioners in total, 2 from 7.15 pm, further 1 from 7.30 pm

5.0 To Confirm Minutes of Previous Meeting of Council, held on 10th May'22

These minutes were confirmed to be a true record of matters discussed, and decisions reached, by the Parish Council, and duly signed.

6.0 Parishioners' Time

6.1 Re playing field overhanging tree branches onto neighbouring parishioner's garden: The PC agreed that the bird nesting season was coming to a close and so therefore they would now be able to arrange for the trimming of the above. Action: PA will liaise with the parishioner to discuss a suitable time for the work to be carried out.

6.2 Re parishioners email request for overhanging trees to be cleared along a pathway running from Walcote Road: Action: KB to contact HDC for advice. GB will seek possible contractor to carry out the work.

6.3 Re email complaints received from a parishioner regarding strewn litter on the village hall car park and dog mess on the playing field: After consulting the village hall committee it was confirmed that the bins are emptied once a week, and it was generally agreed that the recent incidence had been exceptional. The situation however will continue to be monitored. With regard to dog mess, the PC acknowledged that this is an ongoing problem, despite many appeals to the public to adhere to the signs displayed, on and around the playing fields, which clearly state no dogs allowed on the field. Action – PA will prepare another notice to be published in the SKN reminding people of this issue and, in particular, the dangers that exist to children, in particular, coming into contact with dog faeces. KB to report to HDC dog warden, requesting increased patrolling of the area.

7.0 Parish Council Procedures

No update

8.0 Planning Matters

8.1 New Applications: None

8.2 Planning decision/s rec'd: 22/00845/FUL and 22/00972/FUL, Monte Bello development plans – both applications were withdrawn by the applicant on 16/05/22.

9.0 Accounts / Finance Matters

9.1 The PC approved, and chairman signed, Sections 1 and 2 of the Annual Governance and Accountability Return, for the financial year ending 31/03/22.

The PC approved the following payments:

Nett	Vat	Total	Details/Comments
15.00	3.00	18.00	Payroll Processing Apr-June'22
80.00	0.00	80.00	Internal Auditor re AGAR 21/22
1430.44	0.00	1430.44	Youth Club Provision 05/01-06/04/22
1077.08	33.36	1110.44	Clerk's Qrtly Payroll, plus mileage, Printer purchase, & Toner
250.00	0.00	250.00	To transfer HDC Jubilee Event Grant to village hall
16.99	0.00	16.99	Engraved Plaque for Queen's Canopy Tree

9.2 KB reported on the cash balances held by the Parish Council at 31/05/22, along with a bank reconciliation.

9.3 The PC agreed to transfer surplus funds from the PC Lloyds current account to the interest earning reserve account held with MHBS.

10.0 Highways and Footpaths

10.1 Re the Mobile Vehicle Activated Sign (MVAS) to be installed in the village: PA reported that he and a parishioner had met with a Traffic and Signals officer from HDC, to confirm two positions for the installation of the required supporting posts. These were agreed to be sited on Welford Road and Walcote Road, near to the entrance points to the village. Action: PA will complete, and conduct, the risk assessments and residents' consultations, as required by HDC, prior to the ordering of the posts. KB to request the updated plans as promised by HDC.

10.2 Re the planned removal, by Western Power, of the wooden pole on Welford Road, which supports a village street light: PA reported that he had corresponded with WP and requested that they provide and fit a bracket that is suitable for attaching the existing street light to the new metal post. The PC agreed to cover any cost incurred. Pending.

10.3 Walcote Road bus shelter maintenance: the PC discussed the suggestion of the bus shelter being used as a civic amenity in some way, which might deter the vandalism and abuse experienced on previous occasions. Action: It

was agreed that KC and GB would look at options. Meantime, GB to request a reduced quote from the maintenance contractor for the currently required maintenance.

11.0 Grounds and General Outside Maintenance

11.1 Memorial Benches Maintenance, to include current maintenance required, as well as an ongoing plan: TW reported that he had no update at this time however the issue was in hand.

11.2 Village Litter Picks: GB reported that he was in the process of arranging for the undergrowth below the playing field hedges to be mown, allowing easier access for the removal of rubbish, at a previously agreed cost of £60 approximately. ED requested that GB liaise with her to enable co-ordination of the next litter picking arrangement.

12.0 Recreation

12.1 Regular Play Area Safety Inspections: PA reported that he had inspected the area during the month and had found no defects.

12.2 Holiday Club, summer '22: KB reported that the provider had had a good response with bookings so far and had delivered some equipment for storage in the village hall, in readiness for the club starting in July. Pending.

13.0 Village Website

13.1 New Village website – No update.

14.0 S106 and CIC Funding

14.1 The PC agreed to have a questionnaire / survey published in the SKN, July edition, to be able to determine support for individual suggested projects. Action: PA will prepare and discuss with the SKN editor.

Proposed plans for the landscaping of Walcote Road corner verges: GB produced pictures and ideas for how this could look. It was commented that this would probably be an autumn project and that the upkeep of the area would need to be considered. Action: GB to draft a plan, with costings, and submit to the PC at the next meeting.

14.2 It was confirmed that the previous application for a CIC refund of Youth Club costs had now been received in to the PC's bank account. Resolved.

15.0 South Kilworth News

15.1 The attending SKN editors confirmed that they had many photographs of the Jubilee village celebrations, to be published in the upcoming July edition, and on the website. The PC agreed that the event had been very successful.

16.0 Her Majesty's Platinum Jubilee 2022 Celebrations

16.1 The Planting of a Commemorative Tree for The Queen's Green Canopy: GB submitted an invoice for a plaque to be placed alongside the tree, when planted. TW made a suggestion for the tree planting location. PC to agree the planning of location at a later date. Pending.

16.2 Village Hall Jubilee Celebrations event: The PC agreed to make a contribution of £120 to the Community Café organisers, regarding the free cream teas provided on the day. Resolved.

16.3 Commemorative Bench: GB confirmed that he had taken delivery of the engraved bench. The PC agreed for this to be installed on the verge of Rugby Road. Action: GB to arrange installation.

16.4 Community Grant Jubilee Fund, 10 grants of £70k, available for bids by 31/07/22: TW reported that he has been in discussion with various contractors, regarding quotes for a MUGA to be installed within the village. TW said that he welcomed anyone that would like to be included in the meeting/s with potential contractors. Action: TW to bring all quotes to next month's meeting so that a preferred supplier decision can be made in time for the submission of the grant application. KB to confirm with HDC how much comparison between quotes was required.

17.0 Defibrillator and CPR Training

17.1 Re proposed further Defibrillator Training session: KC reported that the training event would probably be held in the autumn, and he would confirm a date with the provider for the next meeting.

18.0 Any Other Business

18.1 KC asked the PC to approve, in principle, a request from the Table Tennis club for £500 to be granted from the CIC fund to finance the purchase of a third table for the club. The PC agreed. Resolved.

18.2 GB informed the PC that he was looking in to the costs of a storage battery as suggested the previous month and would bring details to the next meeting for discussion.

19.0 To Confirm Date of Next Meeting

Tuesday, 12th July '22, 7.15 p.m.

Meeting ended at 8.55 p.m.

A copy of these minutes will be published on the South Kilworth Website, no later than thirty days from the date of the meeting.

CPR and Defibrillator Training

Following the success of the courses at the end of 2021, Dr Simon Vincent has offered to run CPR and Defibrillator training on Thursday the 6th October, 7.30 in the Village Hall. Enquiries for a place on the course to: parishclerk@southkilworth.co.uk

Parish Council





Do you want to make a difference in your local community whilst developing your own leadership, planning and financial skills?

Why not join the award-winning governance team at Learn Academies Trust by volunteering as a Local Governor at South Kilworth C of E Primary School?



Local Governors work on behalf of the Trust Board, focusing on:

- Standards, curriculum and school ethos
- Health, safety and premises, including safeguarding
- Parental and wider community engagement
- Assurance and oversight of compliance and risk, including finance



SCAN ME

To find out more about governance in Learn-AT schools:

- Go to <https://www.learnat.uk/governance>
- Or email Pippa Darbourne on pdarbourne@learnat.uk

To find out more about South Kilworth C of E Primary School go to <https://www.southkilworthprimarschool.com/>



Focus on South Kilworth Security Alert WhatsApp group

A normally functioning society depends on laws that are generally accepted, respected and obeyed. Vigilance is required to protect one's community and quality of life. Knowing that someone 'has your back' is not only reassuring but valuable support. In our village, the SK Security Alert Group provides an important and supportive platform and we asked Gary Aram, one of the volunteer team to tell us a bit more about the group. He responded:

"Following a spate of burglaries in the village, we began the South Kilworth Security Alert WhatsApp group in November 2017 and it now has 76 members.

Originally we had PC Andy Cooper (Coops) as a valuable member who was able to give feedback on concerns. Our understanding was that the existence of the group had spread and was acting as a deterrent. Unfortunately, Police policy changed and Coops had to withdraw but there is hope we may be able to establish another link and discussions are taking place.

The administrator team are also members of Neighbourhood Watch North Kilworth and Swinford (and vice versa) and we try to post relevant information onto each other's sites. If we see interesting articles on the Neighbourhood Watch mailings we endeavour to post those as well.

The focus of the group is security. Any member can post details or photos of suspicious behaviour, vehicles, etc. Social chatter is discouraged as it can be a distraction from the important notifications when you have a string of messages coming through.

We have a Welcome page and Code of Conduct and ask that you are respectful of your fellow villagers when posting comments. The police do not monitor the site so please report a crime, serious concerns, or Anti Social Behaviour to the police via 999 / 101 or online at <https://www.leics.police.uk/> Make your posts concise but detailed – times/places/event, etc. Remember not to include personal information without permission or consent - post pictures if that helps. The group is not to be used for anything other than conveying security alert information – remember we have a village email system: southkilworth@gmail.com. If you need to contact someone directly, please do it separately.

South Kilworth Security Alert Code of Conduct

To ensure public confidence in SK Alert WhatsApp Group, it is appropriate that the group members adhere to the Ethics and Standards Guidelines, and Policies adopted and taken from the Neighbourhood Watch Network. Please read them in detail when joining the group as failure to adhere to the Code of Conduct will result in removal from the group.

The volunteer admin. team has changed over time and now consists of:

Gary Aram 07799894207 Kate Millington 07990504734 & Graham Rutter 07721442561
Please contact us if you are a resident of South Kilworth and wish to join the group. You will need to have or download WhatsApp. The simplest way is to share your contact (containing name and address) with a member of the admin. team.

With the permission of BT to use their poles, we have placed "Burglars beware" & "CCTV" signs at the four entrances to the village as a further deterrent. "





HD Physiotherapy and Sports Injury Practice

Sophie Davies
Chartered Physiotherapist
MCSP, HCPC Registered

07818 858741 or 07939 234579
sophie@hdphysiotherapypractice.co.uk
www.hdphysiotherapypractice.co.uk

- ✓ Expert local Physiotherapy assessment, treatment and rehabilitation
- ✓ Treadmill and gym facilities for dynamic assessment
- ✓ COVID Secure
- ✓ Registered with all leading healthcare insurers





Bliss & Beauty are based in the beautiful village of South Kilworth.

We specialize in treating skin, and offer free consultations to help tackle your skin concerns, whether it's acne, rosacea, or simply the joys of ageing!!! Consultations are very in depth and include the option of a Zoom session or phone call, if preferred. You can call the salon on 01858 571244 and leave a message, or email us on info@blissandbeauty.co.uk

Follow us on Facebook and Instagram and see some of our successes



What to do in the Garden in July and August

- ✦ To keep your garden flowering right through to autumn, it is important to dead head which prolongs flowering. Some perennials, such as *Alchemilla mollis*, common name Lady's Mantle and hardy geraniums may have so many spent flowers it is easier to take the shears to them and cut them down. If this is done early in July, they will reward with new growth and a second flush, as will many perennials.
- ✦ July/August is the time to summer prune Wisteria which is important to keep it flowering year after year. Wisteria is vigorous and needs harsh treatment. Prune back the summer growth to contain the plant by cutting the whippy tendrils back to about 15cm (6") long.
- ✦ Keep feeding and watering Tomatoes to ensure a good tasty crop.
- ✦ Under Wildlife & Countryside Act 1981 it is an offence to intentionally



damage, destroy or take the nest of any wild bird. This restricts the pruning of hedges during the bird breeding season. By August it is generally considered that the birds have finished nesting and it is possible to prune hedges, checking first.

- ✦ Remove any rose suckers and keep feeding roses for a long flowering display. Black spot can be a problem, and there are now several good organic black spot sprays available to keep it at bay.



More gardening tips www.sundaygardener.co.uk

Carol Bartlett



Photos from the NGS Open Garden (Pam Shave's Oak Tree House) in South Kilworth, North Road, held in June. Next Open Garden dates are 10 and 11 Sept 2022.

JLR **BESPOKE** PROPERTY RENOVATIONS



JLR Bespoke Property Renovations are an experienced and trusted Project Management and Construction team based in North Kilworth, Leicestershire.

If you have a project or idea in mind, please don't hesitate to contact us either by phone or via our website.
 Tet: 07866 741 261 (Jason Wright)
www.jlrbespokeproperties.com

ECLECTIC STOVES

Multi-fuel Stoves Installation
Service & Alterations • Chimney Liners
Chimney Systems Accessories



Outdoor Ovens & Accessories
Outdoor Heaters & BBQ's

Tel: 077368 14399 - 07976 177987

Email: info@eclecticstoves.co.uk

Web: www.eclecticstoves.co.uk



Eclectic, Lodge Farm

Walton Lane, Husbands Bosworth LE17 6NN

Open 9-5 Sat and 9.30-3 Thurs

STOVES



Multi-fuel Stoves • Installation,
Service & Alterations • Chimney Liners
Chimney Systems • Accessories

Tel: 077368 14399 - 07976 177987

Email: info@eclecticstoves.co.uk

Web: www.eclecticstoves.co.uk

Eclectic, Lodge Farm

Walton Lane, Husbands Bosworth LE17 6NN

Open 9-5 Sat and 9.30-3 Thurs

South Kilworth 'Sky' Youth Club

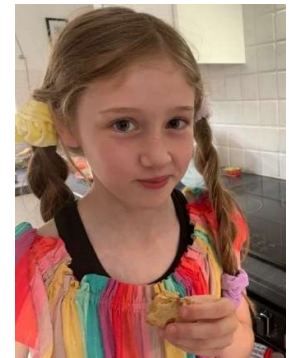
We love sweet things and when our favourite SK young person recently brought us some delicious warm cookies, we had to ask where they came from. She told us eagerly: 'The Sky Youth Club'. It turns out that South Kilworth has one of the longest successfully running Youth Clubs in the Harborough district.

Wanting to know more, we spoke to Ruth Cross who coordinates several youth projects and who is a qualified Community Worker. Ruth has teams of Community Workers who run Youth Clubs and other projects across the district.

Ruth told us that the SKY Youth Club provides a depth of valuable life skills such as building resilience, building relationship skills with peers

and adults, building a sense of identity, and promoting mental and emotional wellbeing... this is all done while undertaking fun activities. This wonderful opportunity for the youth of South Kilworth came about when some years ago, the Parish Council

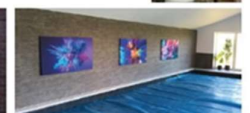
decided to provide and fund the program. This enables the program to be delivered free of charge to South Kilworth residents.



KILWORTH CARPENTER

30 Years experience in domestic work, including:

- Door hanging
- Built in cupboards and wardrobes
- Flooring installation - solid wood and laminate
- Fencing - new, replacement panels and repairs
- Garden structures - sheds, summer houses and pergolas
- General carpentry repairs and alterations
- Painting and decorating
- **No job too small!**



CONTACT NEIL SMITH ON 07835 976998
or neths62@icloud.com FOR A **FREE QUOTE**

All young people join together for the first half of the evening and the second half is for the older group only. The ratio of youth to community workers is 8:1 and currently, 12 young people attend. Volunteers are welcome to contact Ruth Cross if you wish to get involved in supporting the Youth Club.

The club is promoted by word of mouth and it is the young people who provide the recommendations! So, we will let our cookie benefactor, Harriet Langman, have the last say: *'I like the Youth Club because all of the staff and all of the activities are great and every week, they provide snacks....and sometimes you can make food and it is exciting!'*

Toni & Rob Snell

Admission is free
 South Kilworth Village Hall
 Wed 6:45 – 8:45
 Young people 8-16
 (12+ only 7:45-8:45)
 Call Ruth 07921847347
 E-mail: ruth@hcy.org.uk
www.hcy.org.uk/chill-out



Harriet Langman provided all of the pictures of her activities. We ate some of the output 😊.

Albert's Café and Tearoom
Friendly atmosphere and freshly cooked food
 All day breakfasts, toasties, jacket potatoes, cakes and more...
 Open Thursday – Sunday 10 – 3
 To pre-order, call 07742342772

Unit 2, Evergreen Fields, Pincet Lane, North Kilworth, LE17 6NE

Jenny Attkinson, has taken over Albert's Café and tearoom from 1st April 2022. So, if you are walking your dog, need a pit-stop for a cuppa or are feeling peckish, Jenny will welcome you. Please check the opening times.

A.T. BROWN & SON
CLEANCARE SERVICES

PROFESSIONAL CARPET & UPHOLSTERY CLEANERS

Telephone: 0116 279 6969
 Mobile: 07442 531 284
matt@atbrownandson.co.uk www.atbrownandson.co.uk

F & W Plumbing & Heating Services Ltd
 Elmcroft Road | North Kilworth | Lutterworth | LE17 6HX
Bespoke Bathroom & Kitchen Design & Installation
 Over 30 years experience in Designing and Installing Contemporary to Traditional Kitchens and Bathrooms

Call Jason for Free Quotation on 07866741261 | Email: jasonfandw@hotmail.com
www.fandwplumbingandheatingservices.co.uk

"We employed Jason to revamp our hotwater system , bath and shower room. The quality of his work and Jason's attention to detail is exceptional. Everything Jason said he would do, he did. He was totally reliable. The whole project was completed on time and on budget. We are delighted with his work and have no hesitation in recommending him."
 Graham and Julie Fish | North Kilworth

"Jason was a great help when we were choosing the fittings for our bathroom and downstairs cloakroom. He started and finished the work in line with the agreed programme dates. The quality of the work carried out was first class and we could not be more pleased with the completed job. We have no hesitation in recommending Jason."
 Phil & Barbara Lawrence | North Kilworth

Plumbing | Joinery | Plastering | Electrical | Decoration | Floor & Wall Tiling
 Gas Safe Reg. No. 75883 | Hot & Cold Water System Upgrades | Boiler Heating System Upgrades
 Project Managed Personally with all Associated Trades coordinated for High Quality Finish.



Kilworth Springs

PREMIER GOLF CLUB

Founded in 1993 and overlooking the beautiful Avon Valley in South Leicestershire. Our 18-hole golf course and TrackMan powered driving range are the perfect place to unwind whilst working on your swing.

With a function room available for hire complete with event catering for weddings, special occasions and corporate events. All aspects are open to the public, so whether you are looking for a social game of golf, a drink or bar meal, a premier golfing venue to stage your golf tournament or somewhere to impress for your forthcoming wedding, party, or corporate event – Kilworth Springs Golf Club provides the finest facilities and catering for every occasion.



www.kilworthsprings.co.uk