



Welcome to Lowther Hills Ski Club

Thank you for joining the Lowther Hills Ski Club. Your membership application has been processed and now you are formally a member of the Ski Club. We hope you will enjoy being part of this small family-friendly and volunteer-based club which operates the only snowsports facilities in the South of Scotland.

Skiing in the Lowther Hills would not be possible without the extraordinary amount of work and time given by our volunteers.

As a volunteer-run club, we operate the facilities when volunteers are available (and the weather is right!). We tend to open the ski tows mainly during weekends and school holidays, but if volunteers are available we also open during the week. Our aim is to provide skiing for about 20 days per season.

While our hill is small and our facilities are humble, our camaraderie is great and the privilege of being part of the history of skiing in the South of Scotland is unique.

The Lowther Hills Ski Club is now your club. Please consider getting actively involved through volunteering. There are all sorts of jobs available and many different ways to help the club. The more people lending a hand, the more we will get done.

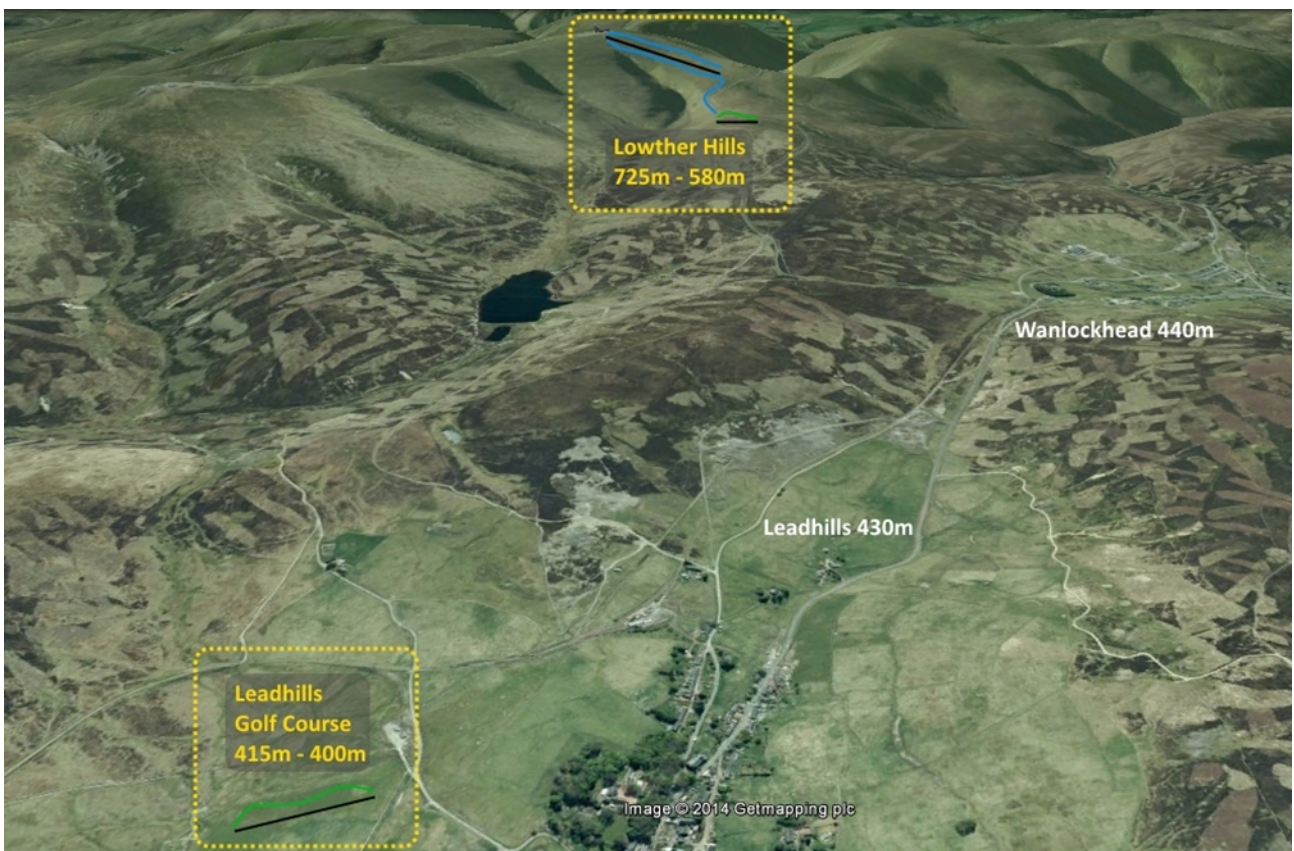
Member Benefits

Lowther Hills Ski Club members enjoy a wide range of benefits which include:

- + Using the Club facilities (ski tows and clubhouse) free of charge every day we open.
- + Discounts on day tickets at other Scottish ski resorts upon production of a Lowther Hills Ski Pass.
- + Discounts from selected suppliers of equipment, clothing, and travel. For full details on the discounts offered please visit: <http://www.snowsportscotland.org/member-benefits>

Club Facilities

The Lowther Hills Ski Club operates two skiing areas: one for beginners and children in the village of **Leadhills**, and the other main ski area on **Lowther Hill** which has a 475 metre-long rope tow for intermediate skiers and a beginners' slope.



Leadhills Nursery Area

Located in the Golf Course grounds, the Leadhills nursery area is without a doubt the most popular spot for families and beginners alike. The wide and gentle 100 metre-long piste and easy rope tow makes this slope an excellent place to practice your first turns.

Conveniently situated near the village's public parking spaces and about 500m (6 minute walk) up the road from the Hopetoun Arms Hotel, the slope is particularly great for those days when the clouds come in. **This nursery slope is the recommended area for families, particularly with small children** as there is no long walk involved to get to the slope.

Ski Club members have the use of the Leadhills Golf Club clubhouse, where you can put on your ski boots and use the facilities – toilets, a basic kitchen and shelter from the cold.



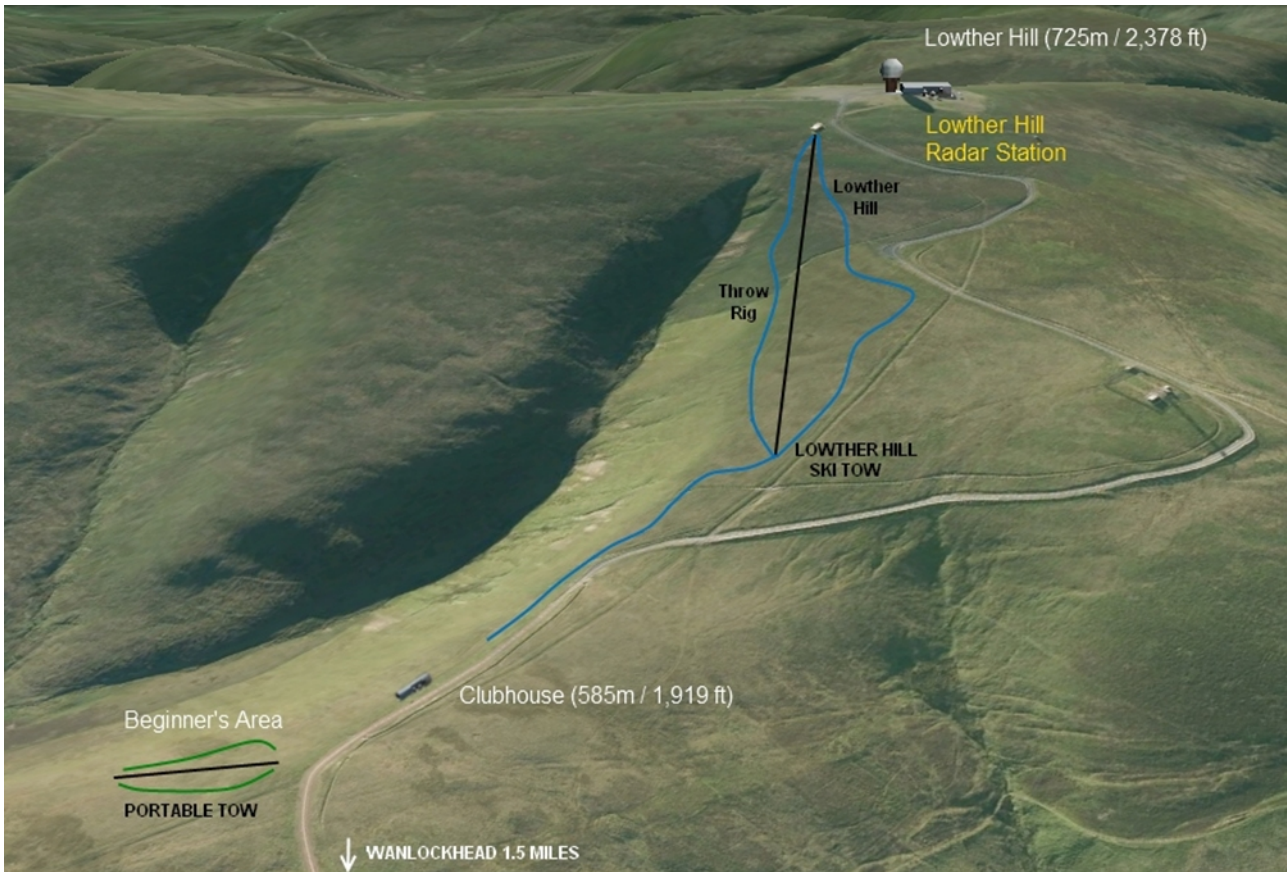
Please park your car at Leadhills square or at the public parking spaces at Leadhills Primary School. Ski Club members are welcome to use the Hopetoun Arms (www.hopetounarms.co.uk) Hotel/Pub car park, which is located behind the hotel. If you use their car park, please consider giving your business to the pub after your day on the slopes.

Please be considerate and do not try to drive up to the Golf Club in winter conditions. The track is steep and not cleared in winter. Too many cars get stuck in this road trying to make it all the way to the Golf Course, blocking the road and wasting volunteers' time.

Lowther Hill

The facilities on Lowther Hill include a 475 metre-long rope tow for intermediate skiers, and a beginners' area with a 100 metre-long rope tow. **This season 2014/15 we will have a temporary building and use of a chemical toilet until the permanent Clubhouse is built in summer 2015.**

The Lowther Hill ski tow is for intermediate and advanced skiers only. You must be confident that you can ride all the way without falling off. In the interest of safety, please do not use the Lowther Hill ski tow if you are a beginner with no experience of using a fast drag lift.



The Club's facilities are located 1.5 miles (40 minutes walk) from Wanlockhead, on the Lowther Hill Radar Station road. This is a private road and no public vehicular access is permitted. You will have to walk all the way up.

However, at certain times and subject to the condition of the Radar Road, the owner of the Wanlockhead Inn (www.wanlockheadinn.co.uk) may be available to transfer Ski Club members from the Inn to Lowther Hill, in his Land Rover, at £2 per round trip, per person. If you use the Land Rover transfer, please park your car at the Wanlockhead Inn and consider giving your business to the pub after your day on the slopes.

In Wanlockhead, members should park in the designated parking areas (and only in these areas), as shown on the site map.

Ski Club members have permission to park at the Wanlockhead Inn and at the area below the Mountain Lodge.

When parking at the Wanlockhead Inn can members please park around the side of the building, if possible, as shown below:



If you are walking to Lowther Hill, the area below the Mountain Lodge is the closest parking area to the Radar Road. From the Mountain Lodge, you can access the Radar Road by the disused railway line.



Please be considerate and do not leave your car near the cottages in the village or by the main road. The roads must be kept clear at all times. In order to minimise traffic impact, please try to car share wherever possible.

Please be aware that parking areas in Leadhills and Wanlockhead are often not cleared, so please bring a snow shovel with you to clear a space or, in the event of heavy snow, dig your car back out!

Upon arrival at the slope...

Upon arrival at the slope please sign-in in the Clubhouse. Please have your ski pass in your possession at all times when using the facilities. If you have any questions feel free to approach one of our volunteers who will be identifiable by their high-visibility vests. If you require any assistance to familiarise yourself with how to use the tow please ask one of our volunteers who will be happy to assist you.

General Information

The Ski Club is volunteer-run and will operate the tows whenever volunteers are available and weather conditions are suitable. Our snow report will be sent to you regularly by email to the email address you provided in your membership form. An update will be also published on the club's website, www.skiclub.lowtherhills.com. We always try to provide as much notice as possible whether the ski tows will be in operation. Because of the vagaries of the Lowther weather, very often we have to take the decision to run a tow at very short notice after assessing the snow and weather conditions in the morning.

Please be aware that as of yet we do not have a snow groomer, therefore be aware that the slopes will not be pisted. If anyone has any ideas on fundraising to purchase a groomer for the 2015/2016 season please do not hesitate to get in touch!

The part of the B797 between Mennock-Wanlockhead-Leadhills is very poorly maintained by Dumfries & Galloway Council in wintry conditions. Do not take the risk of getting stuck or blocking the road. If you are travelling from the south, we strongly recommend you to access the area through Leadhills via Elvanfoot (Exit at the M-74 Junction 14, then follow the B7040 to Leadhills and then continue to Wanlockhead). The roads to Leadhills are regularly ploughed and gritted by South Lanarkshire Council.

The Ski Club **does not** have rental equipment. Good quality, cheap second hand equipment can often be found on eBay. There are many rental shops in Glasgow and Edinburgh.

The Ski Club has a group of trained First Aiders and a good relationship with the Leadhills Fire & Rescue brigade. Emergency contact numbers are displayed in the Clubhouse.

The Lowther Hills Ski Club is a non-for-profit club which is run by and on behalf of the members. The Officers, Committee and helpers give their time voluntarily. In terms of injury, skiing is one of the highest risk sports that adults and children undertake on a regular basis. Whilst every effort is made to maintain as high a standard of equipment as possible, every person who uses the Club's equipment does so entirely at the persons' own risk, and has no claim against the Club members, for any injury or damage howsoever occasioned and whether or not in any way whatsoever due to any negligent act and/or omission.

Please respect the Ski Club's rules

Lowther Hills Ski Club Code of Conduct

It is extremely important that all members read and abide by the Ski clubs code of conduct. **Failure to do so could result in the loss of the Clubs lease.**

Parking – **PLEASE PARK ONLY** in the designated car parks as shown on the site map. **It is vitally important that local residents are not impacted upon by members' cars** - not everyone is as enthusiastic about the Club as we are! Please be aware that the car parking areas are not always cleared by the snow plough so it is a good idea to bring a shovel to clear an area of the car park, if required.

Ski Passes are non-transferable and should be kept in your possession at all times when using the facilities. **Please note there will be a £5 replacement fee for lost Ski Passes.**

Dogs ARE NOT allowed on the hill, as per the Club's lease.

Litter – No litter to be left on the hill. Please ensure that you pick up after yourself. Parents are responsible for ensuring that children do not leave litter behind.

Smoking – No cigarette butts to be thrown on the hill. If you are a smoker please ensure that you dispose of butts the same as any other litter and take it away with you.

Clubhouse - Please ensure that no belongings are left behind in the Clubhouse. The Club will accept no responsibility for items left behind, either in the Clubhouse or on the hill. Please do not leave litter in the Clubhouse, bag it and take it home.

Tows – Before using the rope tows please make sure that all straps, scarves, long hair, anything that could get caught in the tow and cause an accident are secure. If the tow operator gives instructions regarding the tow please listen carefully and follow directions.

Children – Parents are responsible for their children's safety at all times.

Weather – Please dress appropriately for the weather conditions. Be aware that conditions can change rapidly and be prepared for this possibility.

General wellbeing – Be aware that the facility is remote. Bring enough food and water for the time that will be spent on the hill. If you feel unwell please contact one of the first aiders on site or a volunteer who will alert one for you.

Environment - Please respect the local environment. Stick to the access routes shown on the maps.

Lowther Hills Ski Club strongly recommends the wearing of helmets.

Lowther Hills Ski Club hopes that all of our members have a fantastic time on the slopes!

10 FIS Rules for the Conduct of Skiers and Snowboarders

Please familiarise yourself with the 10 FIS (International Ski Federation) Rules of Conduct. These are the international standard of conduct for responsible skiers and have the purpose to avoid accidents on the slopes.



Rule 1: Respect for others

A skier or snowboarder must behave in such a way that he does not endanger or prejudice others.



Rule 2: Control of speed and skiing or snowboarding

A skier or snowboarder must move in control. He must adapt his speed and manner of skiing or snowboarding to his personal ability and to the prevailing conditions of terrain, snow and weather as well as to the density of traffic.



Rule 3: Choice of route

A skier or snowboarder coming from behind must choose his route in such a way that he does not endanger skiers or snowboarders ahead.



Rule 4: Overtaking

A skier or snowboarder may overtake another skier or snowboarder above or below and to the right or to the left provided that he leaves enough space for the overtaken skier or snowboarder to make any voluntary or involuntary movement.



Rule 5: Entering, starting and moving upwards

A skier or snowboarder entering a marked run, starting again after stopping or moving upwards on the slopes must look up and down the slopes that he can do so without endangering himself or others.



Rule 6: Stopping on the piste

Unless absolutely necessary, a skier or snowboarder must avoid stopping on the piste in narrow places or where visibility is restricted. After a fall in such a place, a skier or snowboarder must move clear of the piste as soon as possible.



Rule 7: Climbing and descending on foot

A skier or snowboarder either climbing or descending on foot must keep to the side of the piste.



Rule 8: Respect for signs and markings

A skier or snowboarder must respect all signs and markings.



Rule 9: Assistance

At accidents, every skier or snowboarder is duty bound to assist.



Rule 10: Identification

Every skier or snowboarder and witness, whether a responsible party or not, must exchange names and addresses following an accident.