

Chapter 9

Sporting Organisations

Last Revised 06/04/2017

Table of Contents

[Summary](#).....2
[The Basin Badminton Club](#).....3
[The Basin Football Club](#).....3
[The Basin Football Club Ladies Team](#).....6
[The Basin Cricket Club](#).....6
[The Basin/Ferntree Gully Salvation Army Cricket Club](#).....7
[The Basin Junction Basketball Club](#).....7
[Batterham Park Tennis Club](#).....8
[Miller Park Tennis Club](#).....10
[The Basin Netball Club](#).....10
[The Basin Basketball Club](#).....10
[The Basin Tennis Club](#).....11
[Riding for the Disabled](#).....11
[Lilydale Bowmen Club](#).....12
[Doongalla Horse and Pony Club](#).....12
[Questions and More Information](#).....14
 [The Basin FC](#).....14
 [The Basin Cricket Club](#).....14
 [The Basin Basketball Club](#).....14
 [Doongalla Pony Club](#).....14
 [All Clubs](#).....14
[Sources of Information](#).....14
[Media Items](#).....15
[Appendix I Honour Roll](#).....16
[Alphabetical Index](#).....22

Summary

Summary

The Basin Badminton Club was established in 1935. The club's most successful years were the 1950's and 1960's.

The Basin Football Club was established in 1946. The senior side won its first premiership in 1962.

The Basin Ladies Football Team was active from the late 1950's to the early 1970's.

The Basin Cricket Club was formed in 1946 although not until 1983 was it known by that name. The club has won at least 10 premierships over the grades since the 1960's.

The Basin Junction Basketball Club was formed in 1962 and won their first premiership in 1964. The club was disbanded in the late 1960's.

The Batterham Park Tennis Club came into being in 1972.

Miller Park Tennis Club was formed in 1986.

The Basin Netball Club was formed in the late 1950's.

The Basin Basketball Club was formed in 1976. Many teams in all grades have won premierships over the years.

The Basin Tennis Club was formed in 1932. In 1951, the club won its first premiership. The club disbanded in 1954.

In 1971, the first "Riding for the Disabled" group in Victoria was registered with its base at Wicks Reserve, The Basin.

The Lilydale Bowman Club was formed in 1977 and operates off land in Sheffield Road.

The Doongalla Horse and Pony Club was formed in 1969 and have their base in Sheffield Road.

Distinguished Resident

Max White

A past Secretary, President and junior team manager, Max was a great worker for The Basin Football Club. Never a shirker from hard work, Max ran a drainage business and a hardware store at The Basin. He was a former policeman and in 1962 brought honour to himself, family and town when he was awarded a Police Valour Medal for bravery in assisting to arrest an armed man at Blackburn. Many local organisations have benefited from Max's charitable nature. In a good cause he often rolled up his sleeves or made donations of materials.

In 1965 and 1966 Max stood for the Knox Shire Council. The Basin people gave him an almost unanimous vote but the bigger population in Boronia carried the day for his opponents. Max was eventually elected to Council in 1969 and served for 12 years. He held the position of Mayor in 1971 and 1972.

After leaving The Basin, Max and his wife Pat ran the Homestead motel at Buninyong, near Ballarat for a time.

The Basin Badminton Club

It seems that as a result of talks, between the first minister of The Basin Presbyterian Church Mr. H. M. Bell and church members Mr. & Mrs. Roxburgh, Mrs. Pickett and Mr. L. Gretton, The Basin badminton club was established in 1935. Mr. Roxburgh donated four racquets and a net and the game was played in the Presbyterian Church. Other first year members included Messrs. F. & E. Gretton, A. John, G. & F. Grumont, W. Martin, and Misses M. Dickson, and N. Gibson. Foundation office bearers were Mr. H. M. Bell Chairman, and Mr. L. Gretton Secretary and Treasurer.

The Basin Presbyterian church hall was used for approximately 2 years before the club moved to the Basin Progress Hall which provided extra space and better playing conditions. Prior to S.E.C. power coming to the district the game was played under kerosene lamps. Finance was very limited and the club held various social functions to help defray costs.

The game was played mainly in a social nature before World War II but individuals entered Victorian Badminton Association Carnivals such as country Week. Matches were arranged with neighbouring clubs and tournaments held within the club. Gentlemen were then rarely seen playing in shorts. Because of the war the club went into recess until reformed in March 1946, when it soon began to flourish.

In 1949 the Croydon District Badminton Association was formed with The Basin as a foundation member. In 1952 The Basin emerged as A Grade premiers. To make a stronger competition the Mountain District and Croydon and District Associations amalgamated in 1953 with Basin President George Grumont as President. The "A" Grade pennant was again won in 1958 by The Basin after many years as runners up.

In 1964 The Basin won the "A" Reserve premiership. Among many fine former players Bob Irwin holds a high place having been ranked No. 5 player in Victoria in 1965 and having represented Victoria in 1965-66.

There were many long standing members of the club including George Grumont (32 years - 17 years as President), Ernie Gretton, John Chandler, Wally Goodwin, May Moran, Elsie Greenwell,

The Basin Football Club Achievements

Senior Premierships

1962 Basin 10.8 68 defeated Wandin 9.13 67
 1985 Basin 18.14 122 defeated Fairpark 18.11 119
 1994 (Div. 3) Basin 15.10 100 defeated Templestowe 5.18 48

2012 (Div 4) Basin 19.19. 123 defeated South Belgrave 11.4.70

Reserves Colts (Under 18) Premierships

1981, 1991 (Div. 3), 2007 (Div. 4)

Junior Premierships

Under 15: 1977*, 1978*, 2004, 2007

Under 13: 1990*, 2002, 2007

Under 12: 1989*, 1999, 2003

Under 11: 1983* 1988*

Under 10: 1985* 1986*

*Knox Junior Football Association

Highest Goal Kicker

Nick Tennant 75 (1997)

Senior Runners Up

1984, 1988 (Div. 3), 2004, 2005 (Div. 4)

Wooden Spoons

1967 (Div 2), 1979(Div 3), 1986(Div 2)

2002(Div 2), 2003(Div 3)

Highest Score

41.29 275 versus Rowville (Div. 3) round 16 1969

Lowest Score

4 points versus Montrose (Div. 3) round 13 1980

Players to AFL (VFL)

Angelo Petraglia North Melbourne 5 games,

Footscray 49 games

John Holt North Melbourne 71 games

Jason Danilchenko North Melbourne 39 games

Liam Shiels Hawthorn

Gretton, Marjorie Dickson, and Anne Spry.

The club produced many fine players including Ernie Gretton, Bob Irwin, Margaret Ritchie, May Dickson and Elsie Greenwell.

The Basin Football Club

In Victoria, no town is complete without an Australian Rules Football Club.

From 1946 the young men of The Basin has been represented in this field. To the credit of many staunch workers, the club, after a modest beginning, has grown to a formidable club. Its growth has been in spite of the fact that little local support was forthcoming in the early days and great reliance was placed upon the efforts of officials and the ladies auxiliary for sorely needed funds.

Before the days of The Basin Football Club the Bayswater team had Basin boys W. Jackson,

The Basin Football Club

Premiership Celebrations

One mystery not solved is the identity of the football supporter who ran in his undies down Forest Road after The Basin won its first premiership in 1962.

Collier, A. Collier, A. Turner and Gib. and Alan Chandler playing with it. Consequently the football club dance was well patronised by Basin lads and lasses. A wonderful supper was included in the entry price of four shillings.

The club's inaugural meeting was held at the home of Mr. Jack Martin late in 1946. Arthur Cooper was elected President, R. Peck Treasurer and F. Byford Secretary. Committee members included A. Collett, C. Whitworth, and A. J. Stephens. In 1947, a side was fielded in the Croydon Mail Football League. Having no home ground, the side was drawn to play away continuously and consequently were beaten by huge margins. Players and loyal supporters were transported by Thompson's buses.

In 1948 the club combined with the Colchester-Basin Cricket Club and commenced playing at Batterham Reserve after the proposed site of Wicks Reserve proved unsuitable. South West of the lower oval (beside the dam from which the football was frequently retrieved) was a bark and paling hut built by a working bee. This supplemented by an army tent supplied by Arthur Cooper. The army tent was used as a change room until 1949 when a temporary dressing shed was built.

In 1950, the club joined the Croydon Ferntree Gully Football League, staying with them until 1961.

In 1953 Clifton Pugh, well known artist, was president and in 1955, because of insufficient players, the club was temporarily suspended.

In those early days it seems that the team used to be selected at "Vassos's" Hotel (later known as the Club hotel) on Saturday morning (there was no training in those days) and they could always pick two or three drinkers when short.

In 1957 the club reformed with Alf Petrie President, A. Cooper Treasurer and J. Stephens Secretary with their home at Batterham. Anyone involved with the re-birth of The Basin Football Club would scarcely believe the changes made to

Batterham Reserve in the intervening years as a result of the continued presence of the Football Club and later the Cricket and Tennis Clubs.

In 1957, the club was using the lower oval and played on a surface which still bore signs of the drainage furrows from the days when the ground was part of Rowley Batterham's apple orchard. The club had many working bees to develop the grounds. Saplings were cut down at The Ravine for point and goal posts and power poles were erected to obtain electric power.

An "Ugly Man's Competition" raised enough money to buy timber and galvanised iron to proudly build a 24x48 foot unlined "tin shed" - the first in the district with a 1000 gallon water tank that served for a couple of years for showers and other water supplies. A briquette hot water service and wire netting were added later. Working bees laid the first water pipes from Arcadia Avenue.

Dinny Lewer was appointed coach in 1957 but the team finished last. Dinny was involved in a memorable event in late July 1957. The club had only a single win at this stage and were playing Yarra Glen at home. The forty-seven year old non-playing coach decided to play in the team and show them how it should be done. The side did well, without much help from Dinny. In the dying moments of the last quarter with The Basin three points down, Dinny took a mark thirty yards from goal. Rather than go with convention, the coach decided on a place kick to win the game - probably the first place kick in the district since the war. Dinny kicked a point and The Basin went on to lose.

All year the club had struggled to attract more than seven or eight players to training, but the coach's place kick was responsible for the full nineteen players attending an emergency team meeting at the club the following Sunday morning. After much debate, Dinny managed to hold on to the coach's position by the narrowest margin. That place kick will never be forgotten by those who witnessed it.

Ugly Man Competition

Dinny Lewer, a captain and coach of The Basin Football Club, contributed more than football ability to the cause. His face won the Uglyman's competition in 1957, thus lifting the club's funds by 96 pounds.

The Basin Football Club

The club's first success came in 1958 when side made the semi-finals. Wally Lindsay took over as coach in 1959 and the side finished about the middle of the list. In 1960 Noel Harman was coach and an under 16 side, with Max Norton coach, was fielded.

In 1962, the club joined the EDFL, which later became the EFL

Continuing as coach, Harman was rewarded in 1962 when the senior side won its first premiership by one point. Officials that year were J. Wallace (President), A. Cooper (Treasurer), and R. Williams (Secretary). Star players included John Wright, Norm Parkinson, Morrie Cook, Kevin McDonagh and Ron Williams.

In 1963 a 2nd XVIII was fielded and justified its existence by playing in the grand final.

From 1957 to 1965 the club owed a lot to the work of the ladies committee. Stalwarts among them being Mesdames Swanson, Petrie, Norton, Murray, Scanlon and Harrod.

Until about 1962, all improvements at Batterham were jointly funded by the Park Committee and the Football Club. On many occasions, the club loaned money to the Park Committee for improvements in lieu of future rentals. Over the years the facilities have been improved and upgraded. The ground is now considered by many one of the best in Melbourne.

On the playing field the club has had mixed fortunes since that 1962 premiership, but it is now flourishing. Of note was the first premiership win in 1977 by the under 15's. The club is winning their share of games and enjoying financial stability - all finances being self generated.

A supporters group meet monthly and have been responsible for many improvements to the club rooms and grounds. The group is credited with starting the highly popular Country and Western Day that was held in February for many years.

The Club is fully licensed and runs a well



Top Row: Mavis Battersby, Alice Wallace, Joyce Howe, Jill Wright, Alison Slean, Val James., Eunice Eagles
Bottom Row: Dianne Copley, Ivy Attwood, Edith Thompson, Clara Beale, Lorraine Cable, Maxine Edwards, Lois Evans, Eunice Hared.

The Basin Ladies Football Team 7th May, 1959. Community Fund-Raising Day Batterham Park.

The Basin Football Club

ordered bar. Discipline was established some years back when a handful of individuals were banned for behaviour unbecoming to the club. Members are aware of the value of the facilities and take pride in them. Visitors are also made welcome.

The stability of the club and the esteem in which it is held by its players was highlighted by senior coach, John Ruffles, when he observed in June 1992 that the senior side which beat Templestowe by ten goals the previous week contained only two players who did not play their junior football at The Basin.

To Commemorate 50 years of football at the Club, the Legends Teams was announced at a gala function at The York on Lilydale on the 29th June 1996. See insert on page 6 for details.

The Basin Football Club Ladies Team

Little is known about the team which appeared in the early 1950's.

As reported in the Free Press, 7th May, 1959 at The Basin family picnic and baby show at Batterham Park:

"Ladies Football Game

In a day full of entertainment The Basin ladies played a football match against the football team.

Umpire Russell Harod officiated in a most appropriate outfit – that of a clown.

Starring as a ruck-rover combination was Alison Sloane (5'10") and Eunice Harod (4'10"). Many scoring opportunities were created by the fine play of these two players and young Mavis Battersby was very noticeable as centre half forward and kicked two fine angle goals on the run. Eunice Eagles and Maxine Edwards were both prominent in defence. Jill Wright played a fine game on the wings and was too fast for Billy Girvan. Splendid hand-ball and team work was noticed by Edith Thompson and Lois Evans.

Final scores were ladies four goals three behinds, to men, no goals one point, in a most entertaining game".

A photo of an early 1959 team is on page 5.

A report in the Knox News in 1972 stated:

"HEY GIRLS! ITS OVER HERE"

"The football match between the girls of The Basin and Upper Ferntree Gully didn't interest

the two above (a picture shows two players looking the wrong way). One felt the need to pull guernsey down in all modesty and the other was giving the knicks a womanly tug. But where the action was there was little time to powder the nose or add a touch of lipstick The match was played at Batterham Reserve, The Basin and was naturally a lady-like affair."

As late as 1972, the team was still playing and were known as the "The Basin Beauties".

The Basin Cricket Club

Cricket has had a rather chequered career in The Basin, having many phases over the years.

Before the 2nd World War, Cricket was played by a team calling themselves "The Valley" competing in the Ringwood competition. The side played on a pitch at the corner of Colchester and Canterbury Roads and included such players as George Fiedler, Mick Godfrey and A. Treleven. This club continued after the war as "The Colchester-Basin Cricket Club".

In 1946 The Basin Cricket Club formed and played on the same private property as The Valley in the Ferntree Gully Competition but shortly afterwards moved to Batterham Reserve.

The club was officially affiliated with the FTGDCA on 25th August 1947 with two teams. Players and officials remembered in that period include Alan Collett, Graeme Kerr, and Jim Stephens. A "B" Grade sides were fielded but the club met hard times and was disbanded in 1948 and eventually suspended from the FTGDCA in December 1951.

The Basin Football Club

Legends Team 1947-1996

Back: N. Parkinson W. Lindsay N. Harman

Half Back: S. Kruger M. Redpath Garth Smith

Centre: S. Wright D. Lambert Greg Smith

Half Forward: F. Davis M. Thomas A. Dalton

Forward: D. Ling D. Hill T. Murphy

Followers: M. Cook B. Hartman C. Watson

Interchange: B. Beverley L. Dalton R. Brasher
A. McCarthy

Coach: J. Ruffles **President:** Steve Mills

The Basin Cricket Club Hat Tricks			
Season	Name	Opponent	Grade
1991-92	A. Corbitt	Eildon Park	4XI
1992-93	D. Flanagan	Ferndale	3XI
1997-98	M. Morris		3XI
1998-99	J. Coates		1XI
2008-09	C. Betka	Knox	2XI

A club known as “Somerville Park” then played for the seasons 1952/53 and 1953/54.

The club was in recess for the 1954/55 to 1957/58 seasons.

In 1958 a fresh start was made when The Basin Footballers fielded a cricket side again in “B” Grade of the Ferntree Gully Competition. Over about a ten year period, the club headed the ladder after the home and away matches a number of times, but unfortunately a premiership did not come the club’s way. Defeats in finals were by as little as 3 and 9 runs. One season the “B” Grade side headed the list with 88 points out of a possible 100, but was plagued by injuries and mishaps during the final.

In season 1962-1963 a “C” Grade side was added, and then in 1964-1965 A, B, C and Juniors were fielded - the club had come a long way in a short time.

There were many staunch players and officials up to 1965, among them being Doug Sims, John Wallace, Noel Harman, Alan Sward, Alan White, Norm Parkinson, Morrie Cook, John Wright and Philip Jordan.

In the late 1960’s, the word “Footballers” was dropped from the clubs name. For the period 1973-1983 the club played under the banner of Batterham Park Cricket Club after combining with the Church of Christ Cricket Club. At the commencement of the 1983/84 cricket season, the club reverted to the name The Basin Cricket Club and continues to play under this name.

In the last twenty-five years the club has achieved much success on-field and has won ten premierships throughout the grades. By far the most successful leader has been the late Phillip Johnstone, who captained three premiership teams in the lower grades before his tragic death in 1991. Phillip and his wife Robyn were staunch

Hard Times

The Basin Football Club could have done with a benefactor one year when finances took a sudden dive. No new project had been entered into, no great player had been bought - the treasurer had absconded with the funds and police had to be called in.

workers for the club.

From having two senior and one junior team in the early 1970’s, in the 1990’s, the club had grown to the stage where it was fielding five senior and five junior teams each Saturday.

The Basin Cricket Club has had many outstanding players in the past twenty-five years, including Fred Davies, David Lambert, Steven Plymin, Garth Smith and Tony James. Players have also filled most positions on the club’s committee and there have been many tireless workers including Robert Smith who served as President for eight years, Graeme Murray, Secretary for six years and Mark Posch, Treasurer for eight years.

The outstanding service of these men has been recognised with the presentation of life membership awards and others awarded this honour include Terry Davis, Dennis Wheeler, Paul Wakefield and David Smith.

Since 1989, there have been over 100 centuries scored for the club. The highest being 232 by K. Glover in the 1996/97 season.

Since 1989, there have been over 20 instances of a player obtaining 7 or more wickets in an innings. The best being 9/41 by M Flanagan in the 1989/90 season.

The Basin/Ferntree Gully Salvation

Army Cricket Club.

The first team was formed in 1988. Foundation members were Bill Cooper, a retired Major in the Salvation Army, his two sons, Alan and John, and the then O.I.C. Of the Salvation Army farm, Captain Barker. The idea was to field a local team in the Eastern Suburban Churches Competition.

Part of the charter of the teams formation was to include in the team

The Basin Junction Basketball Club

In 1962, several local girls who were keen on

The Basin Junction Basketball Club

sport decided to form a basketball club. These girls raised enough support to form two teams which were entered in the Mountain District Girls Basketball Association. A distinctive uniform was designed by Joyce Reid and The Basin Junction Basketball Club made its debut with an "A" Grade and "B" Reserve team. Both teams had successful seasons with "B" finishing runners-up.

Another team was added in 1963 and, playing at St. John's Ferntree Gully, all teams finished in the four. The need for home courts was obvious so the girls set to work to raise funds. With the assistance of parents, The Basin Progress Association and the Shire Council, a court was finally put down in 1964. The same year saw Mrs. Marie Alexanderson appointed as the club's first official coach. With extra practice, excellent support and fine coaching "A" Grade won the club's first premiership. It was fitting that this team consisted mainly of the club's original members. Two more courts were added as now six teams were to be fielded. The club had come a long way in a short

time.

In 1966, few of the original members remained but this report would not be complete without mention of Jill and Carol Wright, Joyce Reid, Meryl Neeson, and Denise Gretton whose work and play combined with the efforts of Mrs. Alexanderson, Mrs. Nicholls, Mrs. Hayles and Mrs. Kaliszewski lifted the club to prominence.

Batterham Park Tennis Club

The Batterham Park Tennis Club came into being on 4 September 1972. The founding President was Rev. Ian Parton and Secretary Mrs. Claire MacMillan.

The idea of a tennis club at the reserve had been raised some time earlier when the Batterham Park Grounds Committee called a meeting of local people to discuss the formation of a tennis club. Little interest was shown however, and it was not until a chance meeting between Don Maguire and Claire MacMillan that steps were



*Janice Clinton, Robyn Frost, Ceri Thilby, Norma McNamara, Alison Hampton, Janina Kaliszewski, Pam Mackie.
(names not verified).*

The Basin Junction Basketball Club 1964.

taken to form the Batterham Park Tennis Club.

Don Maguire was a member of The Batterham Park Grounds Committee, and Clare MacMillan was a member of The Boronia Presbyterian Church Tennis Club, a small, but active club without their own courts. They had three teams and hired various courts in Boronia and Bayswater for home matches. After months of negotiation, The Boronia Presbyterian Church Tennis Club ceased functioning, and together with a group of ladies from Mount View became the nucleus of the new Batterham Park Tennis Club. (The Mount View ladies played mid-week on Rita Matthews' private court in Boronia.)

The aim of the new organisation was to have a family based tennis club, open to the local community and catering for all levels of tennis. Founding members were: Len and Judy Pacey, Jeanette and Don Osborne, Beryl Tate, Claire and Hamish MacMillan, Ian and Anne Parton, Ted Cornell, Jean Isherwood, Bill and Dawn Ochiltree, Peter and Lorraine Smith, Gordon and Laurence Hill, Pat Ewart, Robert Henry, Pieta

Boyles, Pat Ingram, Terry Starling, Lorraine Davie, Pat Harvey, Jeanette Brown and Alan Thorne.

The new club was located on its present site and consisted of two en-tout-cas courts, a clubhouse and one asphalt netball court.

A number of prominent local identities have been members of the club, including four Mayors of Knox - Hurtle Lupton, Tom Blaze, Geoff Draper and Peter Maley. Another prominent member was Hamish MacMillan, who was Treasurer of the Victorian Tennis Association and a Director of Tennis Australia. Hamish is also a life member of Batterham Tennis Club and was a past president of Ferntree Gully and District Tennis Association, a position he held for 15 years.

In 1992, the Tennis Club had grown from its original 43 members, to 266. and boasted five en-tout-cas courts and an attractive clubhouse surrounded by gardens and lawn. The courts can be floodlit for night matches.

In 1997, the club held their 25th anniversary with a celebration at a local restaurant.



*Vanessa Beesley, Norma McNamara, Heather Chandler, Alison Hampton, ?, ?, Robyn Ritchie, Barbara Wallace.
(names not verified).*

The Basin Netball Club c1963.

Batterham Park Tennis Club

The Club has had some financial assistance from the local council, but the majority of funds come from the membership and from fund raising events.

Miller Park Tennis Club

Situated on the corner of Liverpool Road and Mountain Highway, the club was officially opened on 6th July 1986 by Cr Tom Blaze.

Original members of the Committee of Management were N. Gooday, A Barden, C. Roberts, B. White, I. Major and J. Hall

The original complex consisted of the club-rooms and 3 plexipave courts.

The first night competition was registered in July 1988 after lights were installed on the existing courts. Twelve months later, three en tout cas courts were constructed with lights installed on these courts in August 1990.

In May 2002, the worn plexipave courts were upgraded to sand filled artificial grass courts with help with a grant from Knox Council.

In October, 2007, the club held its 21st year celebrations with dinner and entertainment at the clubrooms.

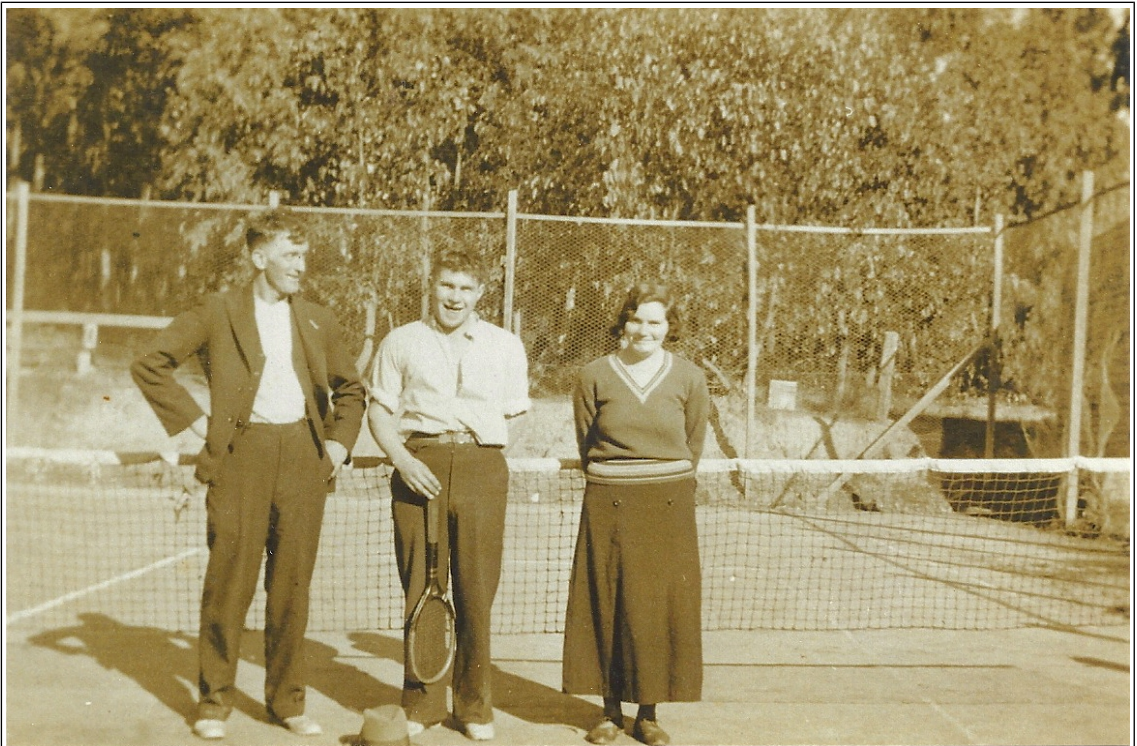
Well known coaches over the years have been Keith Rogers and Ian Goolagong.

The Basin Netball Club

The Basin Netball Club came into being in the early 1960's. Initially, they played on a court in Bayswater Road. One year in the early 1960's, they were unable to play on the scheduled court and used the tennis court at the residence on Midge Beesley.

The Basin Basketball Club

In 1975 a number of women living in The Basin were getting together at playgroup meetings. Their husbands also met regularly, playing cards and billiards. Some of these men decided to form The Basin Basketball Club. The team, which played at Kilsyth stadium, consisted of Dick



*Ernie Burton, Ernie Westworth, Dell Burton. Both men worked at the Doongalla Timber Mill
The Basin Tennis Club Courts c1933.*

Thomas, Matt McManus, Bill Major, Howard Blegg, Andy Sweet, Brian Hill, Godfrey Baker and Bill Barry.

The following year a women's team was formed. This team, coached by Dick Thomas, also played at Kilsyth stadium and was made up of Norma Thomas, Sandra McManus, Irene Major, Joy Wallace, Margaret Stewart, Barbara Moxham, Marilyn Rose, Carol Baker, Loretta Kelly and Lyn Blegg.

The first junior team was formed in 1978 when the coach of an under 16 boys Boronia Technical School team ceased coaching: the team was taken over by Dick Thomas under the banner of The Basin Basketball Club. Included in the team were Geoff Toulson, Matt and Seymour Van De Meere and several boys from the school.

On the 21st April 1979, the club entered its first boy's team for a full season. The team, an 11d side, played at Nunawading and was coached by Bruce Kelly, although the first game was coached by Dick Thomas as Bruce was unavailable. Much of the early work was done by Dick Thomas and Irene Major. A team set of green singlets with white trim were purchased from Kmart and red numbers sewn on. Red cotton football shorts were also purchased and completed the uniform. The boys in the team were David Bortolussi, Ian Bottel, Peter Dobson, Simon and Tony Major, Brian Page, Stephen Shepherd and Andrew Wallace.

In 1981, the first junior girls team was formed and coached by Margaret Sweet and Ute Frankcom played in the under 10 competition. The team played at Boronia stadium and was made up of Gillian Bottel, Michelle Sweet, Joanne Frankcom, Kendra and Donna Gill and Michelle Moore.

In 1992 the club, under the Presidency of Justin Walton, had 460 juniors and 80 seniors making 70 junior teams and 8 senior teams competing at Knox Amateur Basketball Association (K.A.B.A.), Melbourne East Basketball Association, Nunawading (M.E.B.A.), and Kilsyth and Mountain District Basketball Association (K. & M.D.B.A.).

Many teams have won premierships over the years. A championship mens team playing at Kilsyth has been premiers for the past two years.

The Basin Tennis Club

The Basin Tennis Club was formed in 1932 at the initiative of Mr R. B. Smith, owner and operator of Smith's Store, the first store in The Basin. The first meetings were held in Mr Smiths lounge room. The clubs' first President was Mr. Smith himself and the first treasurer and secretary was Miss Rose Rafferty. Mr Smith provided some land at the rear of his property and constructed an asphalted tennis court. Due to the popularity of the game another court was added a little later. The club affiliated with and participated in the Fern Tree Gully and District Tennis Association.

The first few years successes were few. In 1951 the club won its first premiership, the "Dr Farrow Cup". During its existence, the club was extremely popular with its warmth of atmosphere and the afternoon teas provided by the ladies.

Due to property development leading to the loss of their courts, the club disbanded in 1954 with the clubs funds being donated to The Basin Progress Association.

The Basin Progress Association attempted to reform the Tennis club in 1962 in the Batterham Park area but this was unsuccessful. Later, in 1972, the Batterham Park Tennis Club was formed.

Riding for the Disabled

Early in 1971, a number of community minded people in The Basin formed a group with aim of teaching handicapped children to ride. Lead by Mrs. J. Ericson, of Fern Street, the group initially started at South Yarra. In October 1971, the group became the first registered "Riding for the Disabled" group in Victoria with its base at Wicks Reserve, The Basin.

Riding for the Disabled had its origins in England in 1954 and quickly spread to other countries. Queensland was the first State in Australia to start in 1964.

For the handicapped, riding represents a whole new way of life: four strong legs to carry you instead of two weak or useless ones. To those confined to a wheelchair or to moving slowly using crutches or callipers, horse riding opens new horizons, gives new independence and confid-

The Story of Johnny Reb

The Royal Melbourne Show is the Mecca of show jumping in Australia. Show Day is Grand Prix Day; the most coveted event on the Australian Show Jumping circuit.

On Show Day 1971, a cloud hung over the event. The third horse to jump was the skewbald, Johnny Reb, ridden by Guy Creighton. As he made his way around the course, all those who knew him could see that he was not jumping his best or in his usual neat fashion.

Coming to the second last fence, he looked right to jump the parallel bars. He failed to rise high enough to clear the bar, took the front rail with him and crashed heavily to the ground, throwing his rider well clear. He made an attempt to rise but failed to do so.

A screen was placed around him and eventually he was removed to the Research Station at Werribee, where he died on the operating table.

Owned by Max Towns of Orbost in Victoria, Johnny was only a 10-year -old. Starting his jumping career at the early age of 3 years, firstly with his owner, then Geoff Richards, Robert Allen and finally Guy Creighton.

Johnny Reb had jumped with distinction at every worthwhile show between Adelaide and Cairns. He was a Melbourne Grand Prix winner in 1969 when ridden by Geoff Richards, an event he won in brilliant fashion over a very big course.

Plagued by leg injuries for a couple of seasons, he came right back to his own in 1971 with a number of placings in Sydney. This was followed by a win in the Queensland Championships, at Toowoomba, a string of wins in Northern Queensland during the Winter, winning the Australian Show jumping Championships during the Royal National Exhibition in Brisbane and 5 wins in Adelaide.

Johnny Reb was not a big horse, but he was a brilliant jumper who disliked hitting fences. By all standards he was great horse - any horse that wins a Melbourne Grand Prix must be classed as great.

Johnny Reb died a Champion - a true Champion in every sense of the word.

ence, and a lot of enjoyment.

The group at The Basin were known as the "Wick's" group (for the reserve where they met). They were greatly assisted by the Wicks Reserve Committee and the Rotary Club of Boronia, who provided an enclosed area for the riders to work within.

Lilydale Bowmen Club

The Lilydale Bowman Club is located on the corner of Pavitt Lane and Sheffield Rd.

The club was formed in 1977 by five members of the Moorabbin Archery Club. These members were Steve Edwards, Peter Dickson, Brian

Williams, Graham Windsor and David Abbott. They recognised a need for a club that focussed on Field Archery and at the time the Moorabbin Club focussed on Target Archery.

Field Archery simulates hunting game, with small targets placed in natural surroundings at various distances. It requires a large site with natural bush surroundings.

The founding members spent considerable time assessing potential sites for the club; finally choosing a site of 22 acres on the corner of Pavitt Lane and Sheffield Rd. This site was ideal for the purpose and was also surrounded by national park and farm land. The farm land has been leased on occasions for use when the club hosted international shooting competitions. The site is owned by the local council and leased by the club who pay all the land rates. The site has no reticulated water or electricity. Water is provided by on site tanks and a generator provides electricity.

In the early days, the local council supported the club by providing clubrooms in 1984 and toilets in 1986. The toilets were installed on the site boundary to be shared with Doongalla Horse and Pony Club.

Over the years, the club has spent over \$20,000 improving the facilities and now have excellent clubrooms and their own toilets and showers. Finances to improve the facilities have been entirely self funded.

The club grew rapidly and in 1997 boasted the largest club membership in Australia.

The farm was originally called Bonnie Doon and is shown on early maps. The property was auctioned on the 28th June 1912 as reported in the Reporter (Box Hill) newspaper. About 1917, Thomas Burden and his family came to live on the land and called the farm Brockbury. Five of their six children attended The Basin Primary School. Their daughter Kathleen (Kit) married Robert Dobson, the grandson of Davis Dobson, one of the original settlers in The Basin.

Doongalla Horse and Pony Club

On the 24th March, 1969, The Basin Progress Association called a special meeting inviting interested people to form a local horse and pony club. A total of 33 people attended the meeting where following points were made:

There was a definite need in this area for a Horse and Pony Club, as the nearest was at Croydon.

After investigation, The Basin Progress Association compiled a list of 33 names who did not belong to a club but were interested in joining if a local one was formed.

A suitable location was available at Wicks Reserve and the Committee of Management would encourage and assist a newly formed club.

The Shire Riding Councillors were in favour of the proposal and would do what was within their power to help.

The Basin Progress Association was sponsoring the proposal in the interest of community benefit and once the club was formed would take no further active participation unless requested by the club.

Various executive and members of the Croydon and Mountain District Horse and Pony Club had been contacted and some had inspected the proposed location. While the proposal had not been put at their meeting, they personally felt the proposal a worthy one and stated they felt that their club would be willing to advise and assist in the formation of the club.

A committee of 15 was elected to guide the formation and draft a constitution. The first committee members were Mrs Morgan, Mrs Elliott, Mr. John Pittard, Mr. Wallace Campbell, Mrs. Phelan, Mr. John Campbell, Mrs. Ierufi, Mrs. Veal, Mrs Tremevan, Mr. K. Riddell, Mr. L. Everett, Mr. Roy Ritchie, Mrs. Stellar, Mrs. Ericason and Mrs. Gale. President was Mrs. Morgan, Secretary Mrs. Elliott.

The committee arranged to hold a rally and gymkhana in the near future. A local veterinarian, Mr. Wilson, offered his services to the club. Miss Ericason offered to loan 4 horses to the club for a few months and Mr. Robinson offered to let them graze in his paddock provided someone looked after them to which Miss Vikki Walker volunteered.

Subsequent meetings drafted a constitution and the club commenced operations at Wicks Reserve. It was soon discovered that Wicks was unsuitable and other areas including land near Millers Road and the Chandlers paddocks were used for a time. In 1971, the group discovered a large tract of land in Sheffield Road owned by the

then Lilydale Council. Negotiations were successful in obtaining the use of the land, although the agreement to use the land was a loose one.

The land in Sheffield Road became the clubs home and has proved extremely suitable. It consists of an area of 8 - 10 acres that has been cleared over time with a further 10-15 acres of bush used for cross country jumping. All the area is appropriately fenced.

The Doongalla Pony Club Incorporated was registered/affiliated with the Victorian Pony Club Association on 25th May, 1971 with full affiliation granted on 14th December, 1971.

Major ground and building improvements over the years have been:

- The first shed (a double garage) erected in 1972 to store gear and an area flattened for a temporary arena.
- Another double garage shed erected in 1976 beside the earlier one creating a walkway between the two.
- In the late 1970's, a cover was erected over the area between the two garages and also extended out the front of the garages.
- In 1985, a better block shed was constructed with a concrete floor and roof and roller door. A 25KVA electric generator complete with electric wiring to other areas was installed. Prior to this, the members used a portable generator. This new shed was financed and erected by club members. The generator was donated by a club member.
- In 1988, the club negotiated with the Council to construct a series of riding trails that followed local roads and led to the pony club. Many of the younger club members agist horses in local paddocks and have to ride to and from the pony club.
- A stone topped and fenced arena was created in 1989. The local Council financed the excavation and stone topping and the club paid for and erected the fence.
- In 1990, the club renegotiated the land lease arrangement with the Council incorporating much tighter conditions that suited the club.

Doongalla Horse and Pony Club

- In 1991, a huge tree planting effort saw trees around the arena and in many other areas.

- The club used pan toilets up until 1986 when Council constructed public toilet facilities on the land border that is shared with the Lilydale Bowmans Club. However, these toilets were too distant from the club buildings. In 1992, the club financed and erected a large toilet block located closer to the club's buildings.

- The largest "gear" shed was donated to the club in 1993 and erected by members.

- Over time, the canteen front area roof was extended and the floor concreted. In 1999, steel walls were added.

- In 2002, the construction of an additional arena commenced and this is expected to be complete in a few years.

Major events held each year include:

- The Annual Johnny Reb memorial jumping competition (see the insert on page 12 describing how this event came to be named).

- The Annual Johnny McCabe fancy dress event held after the last rally of the year. The McCabe family were active members of the club in the 1970's. Johnny McCabe, the young son, was killed in a tragic accident and the fancy dress is named in his honour.

- Show jumping day, Dressage day and One Day Event (includes Cross Country Jumping).

The club operates a Junior Committee and a Senior Committee. The Junior Committee has been operating since inception and offers younger members of the club a venue for involvement in the administrative functions of the club.

The site is also home to the Doongalla Adult Riders Club who commenced operation in 1981, They use the club facilities, provide finance to the club and assist at working bees but operate as an independent organisation.

Questions and More Information

The Basin FC

Facility development over the years.
Photo of 1962 premiership team with names.

The Basin Cricket Club

Information on recent premierships
Where does the cricket club play
Development of facilities over the years

The Basin Basketball Club

Information since 1992

Doongalla Pony Club

Does the club have an honour roll (President, Secretary etc.)?

Details of the Johnny Reb Memorial Jumping Competition from 2002 to now.

All Clubs

Honour Rolls

Sources of Information

- "The Basin Centenary booklet" - Ron Ikin.

- "Fire on the Hill, Flowers on the Valley" - Rick Coxhill.

- Current and former residents. In particular, Jim and Barbara Stephens for general help and information.

- Current and former members of the Doongalla Horse and Pony Club.

- Current and former members of the Lilydale Bowman Club Club.

Media Items on the Internet

Basin Cricket Club

The Basin Cricket Club has obtained the services of Art. Franklin's band for club dances and extends a hearty welcome to young and old to come along and have a good time at future dances. A nice supper will be provided and there will also be some very good prizes given for Monte Carlos, etc. If local support is given to this club it should go ahead by leaps and bounds.

The Basin football club notes

We have put away the sweaters for this year just a couple of matches sooner than we'd hoped but that's the way it goes. We've had a mighty season; we've beaten every team in the comp. (nobody else has tested East Ringwood); we've been in the four for the first time ever and we've a nice new dressing shed almost finished.

What more could we want? This year several players have played their 100th game with this club — Wal Linsay, A. Galloway, W. Girvan, T. Murphy — and we hope they'll play another 100.

T. Murphy ("Claude") has won best and fairest of the club. He proved that a fit old man is better than an unfit young man.

Murray Adams won the most improved trophy (well earned too). Can you remember a few years back when he first played? Mrs Adams' little boy took some fearful punishment but this year was a different tale. Don Ling was voted the best

utility player. think he could play anywhere on the field with great success. I've seen him exchange bumps with rucks, forwards full backs and even goal posts.

M. Cook won most consistent and R. Fowkes the best first year player; both popular awards.

R. Harrod won best clubman and was another good choice. Not many people realise the work Russell does marking the ground, minding the gear and caring it to every game.

The club is very grateful for the excellent support that players and spectators have given this year and look forward to even better things next season.

Also as special vote of thanks to the ladies' committee for their untiring job done in the background.

To wind up the year we are having our annual presentation ball next Friday, August 29. You are all welcome to come along and help wind up our successful footy season.

—BASIN-ITE

Basin win first flag by point in thriller

In a hard game featuring strength and speed, The Basin last Saturday defeated Wandin by one point to gain their first premiership ever.

Right from the start the Basin went into attack but Wandin's back line turned them back. The Basin persisted, and G. Parker kicked a brilliant goal. Not to be denied, Wandin attacked and goaled.

As the game settled down it could be seen that this would be a battle of back lines.

The siren rang to end the first quarter with the Basin having a one goal advantage.

Basin, 3.2.

Wandin, 2.2.

With the wind in this quarter, Wandin soon evened the score and looked like running away from the Basin, but the Basin took stock, and with K. McDonough at full-back pulling down every kick that came his way, and P. Badge showing plenty of pace, slowed down the attack and many times sent the Basin into attack, where R. Williams and P. Percy gave Wandin plenty of trouble.

At the close of the quarter the Basin were trailing by 11 points but looked like settling down.

Half-time scores:—

Basin, 5.2.

Wandin, 6.7.

After the rest it was a different Basin. With a few positional changes they settled down and really got on with the job. The Basin's rucks were killing their opponents, and with J. Wright on the ball now were attacking all the time.

K. Elliott, in the centre, was giving his side plenty of drive, while G. Parker and R. Williams were putting plenty of fire into the forward line.

At the other end of the ground K. Elliot and P. Badge were turning back all that came their way, only allowing Wandin two scoring shots.

Three - quarter time scores:—

Basin, 9.6.

Wandin, 7.8.

From the start Wandin were into attack but only to be turned back by a very tight, hard-hitting back line.

Then it happened. A free-kick to Wandin, and the Basin looked like being in trouble with Wandin going mad and having shots from all angles, but K. McDonough still stood firm.

With only time-on to play, N. Harmon grabbed the ball out of a pack and running around two opponents, kicked a beautiful goal. Back to the centre and Wandin towards goal. Poulter gained possession and this looked like Wandin's flag, but up in the middle of the pack came two big hands and K. McDonough saved again. With only seconds to go the Basin were driving forward again, and then it was all over, with the Basin taking out the flag.

Basin, 10.8.

Wandin, 9.13.

Best: K. McDonough (best on ground), M.

Cook, P. Percy, J. Wright, P. Badge, J. Horsnail.

Goalkeepers: P. Percy 3, R. Taylor 2, N. Harmon 2, G. Parker, M. Cook and K. Elliott one each.



• CARL BREWSTER, Basin ruckman, palms the ball to N. Mitchell (22) in last Saturday's grand-final. —R. GATHERUM photo.

THE BASIN BADMINTON CLUB.

Sir,—Re letters printed in your paper (10/4/47), the above club has never at any time given permission to send letters to the "Press" under the heading "The Basin Badminton Club." We have no complaints to put to the progress association. So unless official, please do not head them as above—(Signed) J. N. GRIFFIN, Secretary and Treasurer.

F.T.G. District Cricket Association

The F.T.G.D.C.A., which was formed on August 25, held a further meeting on Tuesday, September 2. Eight clubs have stated their willingness to enter the newly formed Association and entries by any clubs wishing to enter will be accepted up to September 30, 1947.

Teams which have already entered are Scoresby, Fern Tree Gully (No. 1 and 2 teams), Boronia Church of Christ, The Basin (No. 1 and No. 2 teams) and Upper Fern Tree Gully (No. 1 and No. 2 teams).

It had been hoped that two grades would be formed this year, but owing to the lateness of the move to form an Association, many local clubs were not prepared. It is hoped that all clubs in F.T.G. district will give the Association a try, and that next year there will be two grades and all adjoining clubs will be represented.

The competition will be started in October and will be for the Cr. A. F. Pickett Shield.

The office bearers who were appointed are as follows:—Cr. A. F. Pickett, Burke road, Fern Tree Gully, president; Mr L. Ewart, the Avenue, Fern Tree Gully, hon. treasurer, Mr A. C. K. Aplin, C/o T. Hayes, Upper Fern Tree Gully, hon. secretary.

Appendix I Honour Roll

The Basin Football Club Honour Roll							
Year	President	Secretary	Treasurer	Captain	Coach	Best & Fairest	Best Club Person
2013	A. Winters	B. Phillips	C. Mackay		M. Glassborow		
2012	B. Howlett	B. Phillips	C. Mackay	D. Den Braber	M. Glassborow	T. Mills	
2011	B. Howlett	B. Phillips	C. Mackay	D. Den Braber	M. Glassborow		
2010	B. Howlett	B. Phillips	C. Mackay	P. Garrity	L. Rowe/ M Clark	D. Den Braber	C Mackay
2009	G. Lee	B. Phillips	C. Mackay	M. Smith	L. Rowe	P. Garrity	J. Ikin
2008	G. Lee	B. Phillips	V. Laurito	A. Cowlshaw	L. Rowe	L. Haslem	J. Ikin
2007	B. Phillips	S. Billsborrow	J. Wilson	M. Smith/ L. Anderson	D. Searle	B. Holmes	T. Burt
2006	V. Laurito	B. Phillips	J. Jones	S. Ellis	B. Hartman	M. Smith	C. Thompson
2005	V. Laurito	M. Bailey	S. Wilson	C. Gillett	C. Gillett	R. Mitchell	
2004	B. Akers	M. Bailey	C. Mehegan	C. Gillett	C. Gillett	L. Cook	G. Smith
2003	B. Akers	C. Mehegan	C. Mehegan	S. Flynn	S. Downward/ S. Mehegan	A. Watson	N. Akers
2002	B. Akers	D. Cowlshaw	S. Wilson	S. Flynn	J. Ruffles	A. Cowlshaw	A. Morse
2001	L. Keenan	V. Laurito	S. Wilson	R. Mitchell	R. O'Neil	S. Flynn	J. Ikin
2000	L. Keenan	V. Laurito	S. Wilson	R. Mitchell	R. O'Neil	M. Thomas	A. Farrell
1999	S. Mills	M. Mills	D. Larter	R. Mitchell	S. Jones	R. Mitchell	F. Davis
1998	S. Mills	M. Mills	G. Smith	M. Thomas	G. Norbry	R. Mitchell	T. Williams
1997	S. Mills	M. Mills	G. Smith	N. Tenant	N. Tenant	A. Watson	
1996	S. Semken/ S. Mills	C. Mehegan	G. Smith	M. Redpath	P. Brown	M. Smith	V. Laurito/ M. Bailey
1995	S. Semken	D. Semken	G. Smith	M. Redpath	P. Brown	C. Watson	R. Johnstone
1994	S. Mills	D. Semken	G. Smith	M. Redpath	J. Ruffles	C. Watson	K. Winters
1993	S. Mills	S. Semken	G. Smith	M. Redpath	J. Ruffles	B. Hartman	G. Smith
1992	S. Mills	D. Semken	G. Smith	M. Redpath	J. Ruffles	A. Dalton	G. Smith
1991	S. Mills	C. Mehegan	G. Smith	G. Newbold	G. Newbold	M. Redpath	L. Mehegan
1990	K. Ryan	C. Mehegan	B. Ryan	M. Hall	S. Waye	N. Flanagan	B. Ryan
1989	K. Ryan	C. Mehegan	B. Ryan	J. Wright	S. Waye	M. Redpath	K. Ryan
1988	K. Ryan	B. Ryan	B. Ryan	S. Downard	S. Waye	A. Dalton	S. Mills/ J. Brasher
1987	K. Ryan	B. Ryan	L. King	M. Hall	S. Hilton	A. Dalton	H. McDonald
1986	K. Ryan	J. Ruffles	L. King	M. Hall	S. Hilton	S. Kruger	K. Ryan
1985	C. Kruger/ N. Harman	R. Bruton	M. Little	K. Rout	K. Rout	K. Rout	D. & B. Palmer
1984	J. Wallace	W. Fillis	R. Smith		K. Rout		
1983	J. Wallace	D. Wilson	R. Smith	G. Smith	J. Ruffles	S. Hilton	B. Wilson
1982	J. Wallace	T. Slatter	R. Smith	G. Smith	J. Ruffles	P. Cannon	R & J Smith
1981	J. Wallace	N. Smith/ R. Fay	R. Smith	G. Smith	A. Gill	J. Cerini	A & S Jacobs
1980	J. Brasher/ P. Ashby	M. Mills	M. Little		A. Gill	Greg Smith	D. Ross
1979	D. Luscombe	A. Rennick	D. Lambert	R. Smith	G. Robinson	Garth Smith	A. Robinson
1978	D. Luscombe	P. Ashby	D. Lambert		G. Barnet	D. Lambert	D. Lambert
1977	J. Cosstick	T. Tate	F. Cosstick		D. Hunnam	D. Lambert	J. Bennett
1976	P. Smith	T. Tate	J. Cosstick		A. Lambert	D. Lambert	R. Luscombe

The Basin Football Club Life Members Honour Roll			
Adams, Mark	Akers, Bert And Noreen	Amos, Ian	Brasher, John
Cook, Maurie	Davis, Terry	Davis, Fred	Dalton, Les
Downard, Steve	Ewart, Colin	Fay, Reg	Folino, Jim
Gill, Adrian	Gillies, Don	Gramlick, Ted	Hall, Mark
Harrod, John	Howlett, Brett	Ikin, John	Jacobs, Ron
Jacobs, Shirl	Kidner, Harry	Killian, Matthew	Kirkman, Josie
Kirkman, Bill	Kirkpatrick, N	Kruger, Stephen	Lambert, Dave
Larter, Daryl	Laurito, Dom & Vivienne	Lindsay, Wally	Luscombe, Mick
Lynch, Dave	Mcginty, Tom	McLachlan, B	Megehan, Larry
Megehan, Simon	Megehan, Carol	Mills, Steve	Morse, Andrew
Murray, Paul	Murray, Graham	Murray, Freda	Norton, Max
O'Hare, Wally	Redpath, Mick	Robinson, Annette	Ruffles, John
Scanlon, D & M	Skerke, Gordon	Smith, David	Smith, Keith
Smith, Greg	Smith, Robert & Wendy	Stephens, Jim	Tompkins, James
Wallace, Jack	Wallace, Matthew	White, Max	Wilson, Sharyn
Winters, Karl			

The Basin Cricket Club Life Members Honour Roll	
1967/68 Jack Wallace	1994/95 Matt Wallace, Rick Turncinovic
1968/69 Norm Parkinson	1995/96 John Kilby, Robyn Johnstone
1969/70 John Wright, Alan Sward	1997/98 Matthew Stickland
1984/85 Fred Davis, David Smith	1999/00 Glenda James, Colin Ewart
1985/86 Robert Smith, Terry Davis	2000/01 Paul Stewart
1986/87 David Lambert	2002/03 Alan Clark
1987/88 Garth Smith	2003/04 Ross Osborne
1988/89 Dennis Wheeler, Paul Wakefield	2004/05 Mathew Whalan
1989/90 Tony James, Brian Jackson	2006/07 Greg Best
1990/91 Colin Jacobs	
1991/92 Mark Posch, Phil Johnstone	
1993/94 Graham Murray, Danny Evans	

Appendix I Honour Roll

The Basin Cricket Club Honour Roll						
Season	President	Secretary	Treasurer	Captain	Best Clubman	Presidents Trophy
1947/48		J. Stephens		S. Fiedler		
1948/49				S. Fiedler		
1958/59/60	D. Sims	J. Wallace	J. Wallace	D. Sims		
1960/61	D. Sims	S. Hallett	S. Hallett	D. Sims		
1961/62	D. Sims			N. Harman		
1962/63	D. Sims		D. Sims	N. Harman		
1963/64	J. Wallace	A. Sward	N. Parkinson	N. Harman		
1964/65	J. Wallace	G. Murray	N. Parkinson	N. Harman		
1965/66	J. Wallace	G. Murray	N. Parkinson	N. Harman		
1966/67/68	J. Wallace	G. Murray	N. Parkinson	J. Davies		
1968/69/70	J. Wallace	G. Murray	N. Parkinson	B. McKerrin		
1970/71	J. Wallace	G. Murray	N. Parkinson	P. Jordan		
1971/72	P. Jordan	D. Lynch	N. Parkinson	P. Jordan		
1972/73	P. Jordan	D. Lynch	P. Wakefield	P. Jordan		
1973/74	J. McMullan	P. Wakefield	P. Jordan	P. Hinch		
1974/75	J. McMullan			P. Hinch		
1975/76	R. Hogan	H. McIntosh	S. Plymin	P. Hinch		
1976/77	R. Hogan	H. McIntosh	R. Jacobs	H. McIntosh		
1977/78	R. Hogan	H. McIntosh		H. McIntosh		
1978/79	R. Hogan	D. Burgess		J. Cosstick		
1979/80	D. Smith	A. Rennick	L. Heller	G. Smith		
1980/81	D. Smith	P. McIntyre	C. Williams.	P. Joiner		
1981/82	D. Lambert	R. McIntyre	C. Williams	T. James		
1982/83	R. Smith	D. Wilson	G. Best/ R. Smith	L. Harvey		
1983/84	R. Smith	D. Wilson	J. Alexander	D. Lambert	T. Davis	
1984/85	R. Smith	R. Turcinovic	M. Posch	D. Lambert	B. Jackson	
1985/86	R. Smith	R. Turcinovic	M. Posch	P. Gardiner	R. Smith	
1986/87	R. Smith	R. Turcinovic	M. Posch	R. Turcinovic	B. Jackson	
1987/88	R. Smith	D. Walker	M. Posch	A. Gale	M. Posch	P. Johnstone
1988/89	J. Kilby	D. Evans	M. Posch	R. Irving	M. Posch	D. Evans
1989/90	R. Smith	D. Evans	M. Posch	S. Walter	M. Posch	T. Davis
1990/91	R. Smith	D. Evans	M. Posch	S. Walter	P. & R. Johnstone	B. Jackson
1991/92	P. Johnstone/ S. Semken	D. Evans	M. Posch	S. Walter	D. Semken	S. Walter
1992/93	D. Smith	D. Evans	M. Posch	S. Wilkins	D. Smith	T. & G. James
1993/94	D. Smith	G. James	M. Stickland	S. Roberts	T. James	S. Wilkins

The Basin Cricket Club Honour Roll						
Season	President	Secretary	Treasurer	Captain	Best Clubman	Presidents Trophy
1994/95	D. Smith	G. James	S. Wallace	S. Roberts	T. James	M. Wallace
1995/96	D. Smith	K. Winters	S. Wallace	C. Baxter	M. & S. Wallace	R. Osborne
1996/97	D. Smith	G. James	R. Smith	D. Brodtmann	D. Heskes	R. Johnstone
1997/98	D. Smith	G. James	R. Smith	D. Brodtmann	P. Blake	D. Heskes
1998/99	T. Howlett	G. James	R. Smith	P. Evans	R. Smith	T. James
1999/00	T. Howlett	G. James	R. Smith	A. Brown	M. Davis	G. Best
2000/01	R. Osborne	G. James	R. Smith	M. Stickland	S. Vincent	M. Heskes
2001/02	R. Osborne	M. Humphries	G. Bunker	D. Brodtmann	G. Best	G. Best
2002/03	R. Osborne	M. Humphries	G. Bunker	C. Brown	L. Clarke	C. Flynn
2003/04	G. Carey	M. Bosley	G. Bunker	A. Luckman	G. Best	G. Bunker
2004/05	G. Carey	M. Bosley	G. Bunker	A. Luckman	G. Best	V. Blangiardo
2005/06	G. Carey	M. Bosley	G. Bunker	A. Luckman	M. Bosley	G. Rawnsley
2006/07	G. Best	W. Koster	R. Smith	A. Luckman Captain A. Huntington Coach	L. Clarke	R. & D. Pavia
2007/08	G. Best	R. Pavia	R. Smith	A. Luckman	V. Blangiardo	T. Davis
2008/09	G. Best	R. Pavia	R. Smith	S. Rodie/ A. Heath	G. Best	R. Smith
2009/10						
2010/11						

Appendix I Honour Roll

Johnny Reb Memorial Jumping Competition Past Winners	
1971	Debbie Rawlinson with Manning
1972	Jenny Parlevliet with Tamborine Lass
1973	Howard Ward with Big Ben
1974	Felicity Brennan with Allegro
1975	Glen Bishop with Chubasco
1976	Debbie House with The Exhibitionist
1977	Andrew Garret with Ash
1978	Paul Buckland with Romany Nomad
1979	Lee Davis with Just Peter
1980	David Strapp with Della
1981	Tanya Werna with Corncob
1982	David Joyce with Roly Poly
1983	Phillip Johnston with Circle J Jason
1984	Sarah Bray with Tudor Park Prophet
1985	Lori Hicks with Scooby Doo
1986	Sally Heeps with Wimalong
1987	Daralyn Hodge with Hustler
1989	Brook Dobbin with Cha Cha
1990	Brook Dobbin with Take A Risk
1991	Brook Dobbin with Esso
1992	Caroline Quilty with Columbia
1993	Anna-Jane Stevens with Supper Balaria Boy
1994	Tara Prendercast with Mirror Quest
1995	Sophie Hughes with Supper Cooper
1996	Rebecca Allen with Donlun
1997	Amanda Eltringham with Excavators Illusion
1998	Colleen Waddell with Khan Coban
1999	Amberley Thorpe with All American Boy
2000	Leigh Shera-Jones with Fair Dinkum
2001	Kristy Lee Pettifer with Wenloch Cuchlain
2002	
2003	

Johnny Reb Memorial Jumping Competition Past Winners	
2004	
2005	
2006	
2007	
2008	
2009	
2010	
2011	

Doongalla Pony Club Life Members Honour Roll			
Miller, Gordon and Nooreen	Hertigan, Gary	Domican, Margaret	Steel, Noel and Pam
Dawson, Iris	Anderson, John, Shirley and Mark	Martin, Andrew	Chaplin, Diana
Chipperfield, Bob and Pat	Lowe, Brian	Hudson, Geoffrey	

Alphabetical Index

Alphabetical Index

- A
- Abbott, David
founding member of Lilydale Bowman Club
.....12
- Alexanderson, Mrs. Marie
early supporter of The Basin Junction
Basketball Club.....8
first coach of The Basin Junction Basketball
Club.....8
- Attwood, Ivy
member The Basin Ladies Football team.....5
- B
- Baker, Carol
member of first The Basin Basketball Club
womens team.....11
- Baker, Godfrey
member of first The Basin Basketball Club
mens team.....10
- Barry, Bill
member of first The Basin Basketball Club
mens team.....10
- Batterham Park Tennis Club
formation - 1972.....8
founding members.....9
prominent members.....9
- Batterham Reserve
cricket played there as early as 1946.....6
- Battersby, Mavis
member The Basin Ladies Football team.....5
- Beale, Clara
member The Basin Ladies Football team.....5
- Bell, Mr. H. M.
first President of The Basin Badminton Club.3
founding member of The Basin Badminton
Club.....3
- Blaze, Tom
prominent member of Batterham Park Tennis
Club.....9
- Blegg, Howard
member of first The Basin Basketball Club
mens team.....10
- Blegg, Lyn
member of first The Basin Basketball Club
womens team.....11
- Bonnie Doon
house located at east end of Pavitt Lane.....12
- Bortolussi, David
early member of The Basin Basketball Club
junior boys team.....11
- Bottel, Gillian
early member of The Basin Basketball Club
junior girls team.....11
- Bottel, Ian
early member of The Basin Basketball Club
junior boys team.....11
- Boyles, Pieta
founding member of Batterham Park Tennis
Club.....9
- Brockbury12
- Brown, Jeanette
founding member of Batterham Park Tennis
Club.....9
- Burden, Thomas
owner of Brockbury.....12
- Byford, F.
first The Basin Football Club Secretary.....4
- C
- Cable, Lorraine
member The Basin Ladies Football team.....5
- Campbell, John
on first committee - Doongalla Horse and
Pony Club.....12
- Campbell, Wallace
on first committee - Doongalla Horse and
Pony Club.....12
- Chandler, Alan
played football for Bayswater.....3
- Chandler, Gib
played football for Bayswater.....3
- Chandler, John
long term player - The Basin Badminton Club
.....3
- Collett, A.
first The Basin Football Club committee
member.....4
- Collett, Alan
early The Basin Cricket Club player.....6
- Collier, A.
played football for Bayswater.....3
- Collier, H.
played football for Bayswater.....3
- Cook, Morrie
early The Basin Cricket Club member.....7
star player - The Basin Football Club 1962
premiership.....5
- Cooper, Arthur

first The Basin Football Club President.....4	2002 - additional arena.....14
supplied tent for early days of The Basin	first committee members.....12
Football Club.....4	honour roll Life Members.....23
The Basin Football Club Treasurer when it	how formed.....12
reformed in 1957.....4	Johnny Reb.....
Treasurer when The Basin Football Club won	list of winners Memorial Jumping
first premiership.....5	Competition.....22
Copley, Dianne	story of.....13
member The Basin Ladies Football team.....5	junior and senior committees.....14
Cornell, Ted	locations.....
founding member of Batterham Park Tennis	commenced in Wicks Reserve - 1969.....12
Club.....9	established in Sheffield Road - 1971.....13
Croydon District Badminton Association	major events.....
The Basin Badminton Club as foundation	Johnny McCabe fancy dress.....14
member.....3	Johnny Reb memorial jumping
D	competition.....14
Davie, Lorraine	Showjumping day, Dressage day, One day
founding member of Batterham Park Tennis	event.....14
Club.....9	Draper, Geoff
Davies, Fred	prominent member of Batterham Park Tennis
outstanding The Basin Cricket Club player....7	Club.....9
Davis, Terry	E
The Basin Cricket Club life membership.....7	Eagles, Eunice
Dickson, Marjorie	member The Basin Ladies Football team.....5
long term player - The Basin Badminton Club	Edwards, Maxine
.....3	member The Basin Ladies Football team.....5
Dickson, May	Edwards, Steve
The Basin Badminton Club fine player.....3	founding member of Lilydale Bowman Club
Dickson, Miss May12
early member of The Basin Badminton Club. 3	Elliott, Mrs
Dickson, Peter	first Secretary - Doongalla Horse and Pony
founding member of Lilydale Bowman Club	Club.....12
.....12	Ericason, Mrs
Distinguished Resident	on first committee - Doongalla Horse and
Max White.....2	Pony Club.....12
Dobson, Peter	Ericson, Mrs. J.
early member of The Basin Basketball Club	first Riding for the Disabled group in The
junior boys team.....11	Basin.....11
Doongalla Horse and Pony Club	Evans, Lois
adult riders club.....14	member The Basin Ladies Football team.....5
building improvements.....	Everett, Mr L
1972 - first shed.....13	on first committee - Doongalla Horse and
1974 - double garage.....13	Pony Club.....12
1985 - besser block shed.....13	Ewart, Pat
1986, 1992 - toilet blocks.....13	founding member of Batterham Park Tennis
1988 - riding trails.....13	Club.....9
1989 - stone topped and fenced arena.....13	F
1993 - gear shed.....13	Fiedler, George
1999 - canteen improvements.....14	

Alphabetical Index

played in "The Valley".....	6
Frankcom, Joanne	
early member of The Basin Basketball Club	
junior girls team.....	11
Frankcom, Ute	
coached first The Basin Basketball Club	
Junior Girls team.....	11
G	
Gale, Mrs	
on first committee - Doongalla Horse and	
Pony Club.....	12
Gibson, Miss N.	
early member of The Basin Badminton Club.	3
Gill, Donna	
early member of The Basin Basketball Club	
junior girls team.....	11
Gill, Kendra	
early member of The Basin Basketball Club	
junior girls team.....	11
Godfrey, Mick	
played in "The Valley".....	6
Goodwin, Wally	
long term player - The Basin Badminton Club	
.....	3
Goolagong, Ian	
Coach at Miller Park Tennis Club.....	10
Greenwell, Elsie	
long term player - The Basin Badminton Club	
.....	3
The Basin Badminton Club fine player.....	3
Gretton, Denise	
early supporter of The Basin Junction	
Basketball Club.....	8
Gretton, Ernie	
early member of The Basin Badminton Club.	3
The Basin Badminton Club fine player.....	3
Gretton, F.	
early member of The Basin Badminton Club.	3
Gretton, Mr. L.	
first Secretary and Treasurer of The Basin	
Badminton Club.....	3
founding member of The Basin Badminton	
Club.....	3
Gretton, Val	
long term player - The Basin Badminton Club	
.....	3
Grumont, F.	
early member of The Basin Badminton Club.	3
Grumont, George	

early member of The Basin Badminton Club.	3
president amalgamated Badminton	
Associations.....	3
H	
Harman, Noel	
appointed The Basin Football Club coach	
1960.....	4
early The Basin Cricket Club member.....	7
Harred, Eunice	
member The Basin Ladies Football team.....	5
Harrod, Mrs.	
early member of The Basin Football Club	
ladies committee.....	5
Harvey, Pat	
founding member of Batterham Park Tennis	
Club.....	9
Hayles, Mrs.	
early supporter of The Basin Junction	
Basketball Club.....	8
Henry, Robert	
founding member of Batterham Park Tennis	
Club.....	9
Hill, Brian	
member of first The Basin Basketball Club	
mens team.....	10
Hill, Gordon	
founding member of Batterham Park Tennis	
Club.....	9
Hill, Laurence	
founding member of Batterham Park Tennis	
Club.....	9
Honour Rolls	
Doongalla Horse and Pony Club Life	
Members.....	23
Doongalla Pony Club Johnny Reb competition	
winners.....	22
The Basin Cricket Club.....	20
The Basin Cricket Club Life Members.....	19
The Basin Football Club.....	17
The Basin Football Club Life Members.....	19
Howe, Joyce	
member The Basin Ladies Football team.....	5
I	
Ierufi, Mrs	
on first committee - Doongalla Horse and	
Pony Club.....	12
Ingram, Pat	
founding member of Batterham Park Tennis	

Club.....	9	1959.....	4
Irwin, Bob		Lupton, Hurtle	
The Basin Badminton Club outstanding player	3	prominent member of Batterham Park Tennis	
Isherwood, Jean		Club.....	9
founding member of Batterham Park Tennis		M	
Club.....	9	MacMillan, Claire	
J		founding member of Batterham Park Tennis	
Jackson, W.		Club.....	9
played football for Bayswater.....	3	influenced formation of Batterham Park	
James, Tony		Tennis Club.....	8
outstanding The Basin Cricket Club player....	7	member of Boronia Presbyterian Church	
James, Val		Tennis Club.....	8
member The Basin Ladies Football team.....	5	MacMillan, Hamish	
John, A.		founding member of Batterham Park Tennis	
early member of The Basin Badminton Club.	3	Club.....	9
Johnstone, Phillip		prominent member of Batterham Park Tennis	
successful player for The Basin Cricket Club	7	Club.....	9
Jordan, Philip		Maguire, Don	
early The Basin Cricket Club member.....	7	influenced formation of Batterham Park	
K		Tennis Club.....	8
Kaliszewski, Mrs.		member of Batterham Park Grounds	
early supporter of The Basin Junction		Committee.....	8
Basketball Club.....	8	Major, Bill	
Kelly, Bruce		member of first The Basin Basketball Club	
coached The Basin Basketball Club junior		mens team.....	10
team.....	11	Major, Irene	
Kelly, Loretta		assisted in running first The Basin Basketball	
member of first The Basin Basketball Club		Club junior team.....	11
womens team.....	11	member of first The Basin Basketball Club	
Kerr, Graeme		womens team.....	10
early The Basin Cricket Club player.....	6	Major, Simon	
L		early member of The Basin Basketball Club	
Lambert, David		junior boys team.....	11
outstanding The Basin Cricket Club player....	7	Major, Tony	
Lewer, Dinny		early member of The Basin Basketball Club	
appointed The Basin Football Club coach		junior team.....	11
1957.....	4	Maley, Peter	
Lilydale Bowmen Club		prominent member of Batterham Park Tennis	
facilities.....	12	Club.....	9
focussed on field archery.....	12	Martin, W.	
formation - 1977.....	12	early member of The Basin Badminton Club.	3
founding members.....	12	McDonagh, Kevin	
location.....	11	star player - The Basin Football Club 1962	
site description.....	12	premiership.....	5
Lindsay, Wally		McManus, Matt	
appointed The Basin Football Club coach		member of first The Basin Basketball Club	
		mens team.....	10
		McManus, Sandra	
		member of first The Basin Basketball Club	

Alphabetical Index

- womens team.....10
- Miller Park Tennis Club
 first night competition.....10
 new courts.....10
 officially opened.....10
- Moore, Michelle
 early member of The Basin Basketball Club
 junior girls team.....11
- Moran, May
 long term player - The Basin Badminton Club
3
- Morgan, Mrs
 first President - Doongalla Horse and Pony
 Club.....12
- Moxham, Barbara
 member of first The Basin Basketball Club
 womens team.....11
- Murray, Graeme
 outstanding The Basin Cricket Club official. .7
- Murray, Mrs.
 early member of The Basin Football Club
 ladies committee.....5
- N
- Neeson, Meryl
 early supporter of The Basin Junction
 Basketball Club.....8
- Nicholls, Mrs.
 early supporter of The Basin Junction
 Basketball Club.....8
- Norton, Max
 appointed The Basin Football Club under 16
 coach 1960.....4
- Norton, Mrs.
 early member of The Basin Football Club
 ladies committee.....5
- O
- Ochiltree, Bill
 founding member of Batterham Park Tennis
 Club.....9
- Ochiltree, Dawn
 founding member of Batterham Park Tennis
 Club.....9
- Osborne, Don
 founding member of Batterham Park Tennis
 Club.....9
- Osborne, Jeanette
 founding member of Batterham Park Tennis
 Club.....9
- P
- Pacey, Judy
 founding member of Batterham Park Tennis
 Club.....9
- Pacey, Len
 founding member of Batterham Park Tennis
 Club.....9
- Page, Brian
 early member of The Basin Basketball Club
 junior boys team.....11
- Parkinson, Norm
 early The Basin Cricket Club member.....7
 star player - The Basin Football Club 1962
 premiership.....5
- Parton, Anne
 founding member of Batterham Park Tennis
 Club.....9
- Parton, Rev. Ian
 founding member of Batterham Park Tennis
 Club.....9
 founding President Batterham Park Tennis
 Club.....8
- Peck, R.
 first The Basin Football Club Treasurer.....4
- Petrie, Alf
 The Basin Football Club President when it
 reformed in 1957.....4
- Petrie, Mrs.
 early member of The Basin Football Club
 ladies committee.....5
- Phelan, Mrs
 on first committee - Doongalla Horse and
 Pony Club.....12
- Pickett, Mrs.
 founding member of The Basin Badminton
 Club.....3
- Pittard, John
 on first committee - Doongalla Horse and
 Pony Club.....12
- Plymin, Steven
 outstanding The Basin Cricket Club player....7
- Posch, Mark
 outstanding The Basin Cricket Club official. .7
- Pugh, Clifton
 president The Basin Football Club.....4
- R
- Rafferty, Miss Rose
 founding Secretary of The Basin Tennis Club

.....	11	Club.....	9
Ravine, The		Smith, Peter	
supplied saplings for goal posts and power		founding member of Batterham Park Tennis	
poles.....	4	Club.....	9
Reid, Joyce		Smith, R. B	
designed uniform for The Basin Junction		formed The Basin Tennis Club.....	11
Basketball Club.....	7	founding President of The Basin Tennis Club	
early supporter of The Basin Junction		11
Basketball Club.....	8	Smith, Robert	
Riddell, Mr K		outstanding The Basin Cricket Club official. .7	
on first committee - Doongalla Horse and		Somerville Park Cricket Club	
Pony Club.....	12	early name for The Basin Cricket Club.....	6
Riding for the Disabled		Spry, Anne	
description.....	11	long term player - The Basin Badminton Club	
first registered group in The Basin.....	11	3
origin.....	11	Starling, Terry	
Ritchie, Margaret		founding member of Batterham Park Tennis	
The Basin Badminton Club fine player.....	3	Club.....	9
Ritchie, Roy		Stellar, Mrs	
on first committee - Doongalla Horse and		on first committee - Doongalla Horse and	
Pony Club.....	12	Pony Club.....	12
Rogers, Keith		Stephens, Jim	
Coach at Miller Park Tennis Club.....	10	early The Basin Cricket Club player.....	6
Rose, Marilyn		first The Basin Football Club committee	
member of first The Basin Basketball Club		member.....	4
womens team.....	11	The Basin Football Club Secretary when it	
Roxburgh, Mr.		reformed in 1957.....	4
donated equipment to start The Basin		Stewart, Margaret	
Badminton Club.....	3	member of first The Basin Basketball Club	
Roxburgh, Mr. & Mrs.		womens team.....	11
founding members of The Basin Badminton		Swanson, Mrs.	
Club.....	3	early member of The Basin Football Club	
S		ladies committee.....	5
Scanlon, Mrs.		Sward, Alan	
early member of The Basin Football Club		early The Basin Cricket Club member.....	7
ladies committee.....	5	Sweet, Andy	
Shepherd, Stephen		member of first The Basin Basketball Club	
early member of The Basin Basketball Club		mens team.....	10
junior boys team.....	11	Sweet, Margaret	
Sims, Doug		coached first The Basin Basketball Club	
early The Basin Cricket Club member.....	7	Junior Girls team.....	11
Slean, Alison		Sweet, Michelle	
member The Basin Ladies Football team.....	5	early member of The Basin Basketball Club	
Smith, David		junior girls team.....	11
The Basin Cricket Club life membership.....	7	T	
Smith, Garth		Tate, Beryl	
outstanding The Basin Cricket Club player....	7	founding member of Batterham Park Tennis	
Smith, Lorraine		Club.....	9
founding member of Batterham Park Tennis		Temevan, Mrs	

Alphabetical Index

on first committee - Doongalla Horse and Pony Club.....	12	Gully League.....	4
The Basin Badminton Club		first Basonites played for Bayswater.....	3
early members.....	3	formation -1946.....	4
fine players.....	3	ground improvements.....	5
founding members.....	3	honour roll.....	17
in recess during WW II.....	3	honour roll life members.....	19
long standing members.....	3	legends team.....	6
once played under kerosene lamps.....	3	premierships.....	
premierships.....		1962 - Seniors.....	5
1952 - A Grade.....	3	1977 - under 15's.....	5
1958 - A Grade.....	3	reformation.....	4
1964 - A Reserve.....	3	story about hard times.....	7
The Basin Basketball Club		story about premiership celebrations.....	4
first junior team.....	11	story about uglymans competition.....	4
first men team members.....	10	temporarily suspended.....	4
first women team members.....	10	The Basin Junction Basketball Club	
formation - 1975.....	10	courts.....	8
teams in Kilsyth and Mountain District Basketball Association.....	11	first premiership - 1964.....	8
teams in Knox Amateur Basketball Association.....	11	formation - 1962.....	7
teams in Melbourne East Basketball Association.....	11	original members.....	8
The Basin Cricket Club		photo - 1964.....	8, 9, 10
called Colchester-Basin Cricket Club after WWII.....	6	The Basin Ladies Football Team	
early members.....	7	about.....	6
hat tricks.....	7	photo - 1959.....	5
honour roll.....	20	The Basin Netball Club	
honour roll life members.....	19	about.....	10
life members.....	7	The Basin Presbyterian Church	
once called "Somerville Park".....	6	used by The Basin Badminton Club.....	3
once called "The Valley".....	6	The Basin Progress Association	
played as Batterham Park Cricket Club 1973-1983.....	7	assisted in courts for The Basin Junction Basketball Club.....	8
staunch players and officials.....	7	The Basin Tennis Club	
the word "Footballers".....	7	attempted reformation.....	11
The Basin Football Club		disbanded.....	11
achievements.....	3	first premiership in 1951.....	11
amalgamation with Colchester-Basin Cricket Club.....	4	formation - 1932.....	11
commenced playing at Batterham reserve in 1948.....	4	founding members.....	11
early clubrooms.....		location.....	11
paling hut.....	4	The Basin/Ferntree Gully Salvation Army Cricket Club	
tent.....	4	formed 1988.....	7
tin shed.....	4	The Valley Cricket Club	
early ladies committee work.....	5	early name for The Basin Cricket Club.....	6
early players played in Croydon Ferntree		Thomas, Dick	
		assisted in running first The Basin Basketball Club junior team.....	11
		coach of first The Basin Basketball Club womens team.....	10
		coached first The Basin Basketball Club junior team.....	11

member of first The Basin Basketball Club mens team.....	10	early The Basin Cricket Club member.....	7
Thomas, Norma		White, Max	
member of first The Basin Basketball Club womens team.....	10	Distinguished Resident.....	2
Thompson, Edith		Whitworth, C.	
member The Basin Ladies Football team.....	5	first The Basin Football Club committee member.....	4
Thorne, Alan		Wicks Reserve Committee	
founding member of Batterham Park Tennis Club.....	9	assisted Riding for the Disabled.....	11
Toulson, Geoff		Williams, Brian	
member of first The Basin Basketball Club junior team.....	11	founding member of Lilydale Bowman Club	12
Treleaven, A.		Williams, R.	
played in "The Valley".....	6	Secretary when The Basin Football Club won first premierships.....	5
Turner, A.		Williams, Ron	
played football for Bayswater.....	3	star player - The Basin Football Club 1962 premiership.....	5
V		Windsor, Graham	
Van De Meere, Matt		founding member of Lilydale Bowman Club	12
member of first The Basin Basketball Club junior team.....	11	Wright, Carol	
Van De Meere, Seymour		early supporter of The Basin Junction Basketball Club.....	8
member of first The Basin Basketball Club junior team.....	11	Wright, Jill	
Veal, Mrs		early supporter of The Basin Junction Basketball Club.....	8
on first committee - Doongalla Horse and Pony Club.....	12	member The Basin Ladies Football team.....	5
W		Wright, John	
Wakefield, Paul		early The Basin Cricket Club member.....	7
The Basin Cricket Club life membership.....	7	star player - The Basin Football Club 1962 premiership.....	5
Wallace, Alice			
member The Basin Ladies Football team.....	5		
Wallace, Andrew			
early member of The Basin Basketball Club junior boys team.....	11		
Wallace, Jack			
President when The Basin Football Club won first premierships.....	5		
Wallace, John			
early The Basin Cricket Club member.....	7		
Wallace, Joy			
member of first The Basin Basketball Club womens team.....	11		
Walton, Justin			
president The Basin Basketball Club 1992...11			
Wheeler, Dennis			
The Basin Cricket Club life membership.....	7		
White, Alan			