

'Like a friend
dropping in'



The Elmswell Newsletter



More than thirty years of Parish Record... all the Community News...

APRIL 2020



The 'C' word -
Community

... see pages 10 - 13

Published on the first Friday of every month by the Elmswell Amenities Association Reg. Charity No. 304879.
1,950 copies delivered free to households and to businesses in the community. A volunteer enterprise entirely supported by advertising.

PLEASE SUPPORT OUR ADVERTISERS

EAA@elmswell.org.uk



Our editorial is designed to inform and to encourage debate. If you wish to comment, please do so via the office or by email at; eaa.elmswell.org.uk We reserve the right to edit any such contributions that we may use in a subsequent edition.

We did our best, over many tortured months, to avoid the 'B' Word as we engaged in Euro-Isolation and National Distancing.

But we cannot avoid the 'C' word, bringing with it Self-Isolation and Social Distancing. For our community is comatose, our streets and public spaces are deserted as, drugged by the alcoholic fumes of the hand gel, exhausted by the constant singing of Happy Birthday and hypnotised by the daily escalation of prohibition, we shudder in the face of the brutal reality of daytime television.

Stories of human hardship and struggle abound – a positive pundemic. A youngish couple on Bennett Avenue who misread some of the health advice and self-isolated, only for the lady of the house to fall off, occasioning some slight bruising. Or the chap in Gardeners Walk who, intent on stock-piling, cleared both the Co-op and the Mace of Oxo cubes, Bisto and gravy granules. And as, possibly, the ultimate indicator that all is not well, your Newsletter did not pop jauntily through your door on the first Friday of every month as it has been for the past 30+ years. You are either reading this on a screen or in a rare, soon to be available on e bay for a small fortune, collectors'- piece hard copy from one of our valiant local food retailers. We value our 36 volunteer distributors too much to ask them to deal with dozens of germ-ridden letterboxes or risk a, 'thank you', through a cacophony of coughing. For several years, our front cover masthead has featured the phrase, 'Like a friend dropping in'. Perhaps not for this month, nor for as many months hence as it takes to revert to the deliciously mundane, 'normal'. To a normal hug or a handshake, to the usual popping to the pub or to the everyday Buy-One-Get-One Free toilet roll multi-packs bearing the appropriate acronym, 'BOGOFF'.

Normal is not, currently, a useful concept. The word of the moment is, 'meanwhile'. It defines what happens in the interim, in the gap between the way things were and the way things will be again.

Our pages give a massive clue. Large chunks of life are cancelled. Formal getting together cannot happen. From art to youth football, through Beavers, babies and Bingo through gardening, history, karate, quilting and slimming, not to mention Legs Bums & Tums which seldom, in all fairness, do get a mention in polite society. A rumoured WI session on Origami has folded.

Informal getting together certainly should not happen, and, by all accounts (accounts via Facetime and semaphore only) this maintains.

Ironically, the very last seminar booked at Blackbourne was an NHS session, 'Effective communication with distressed people'. Half-way through the day's session word came from on high and the event was summarily abandoned. It does seem, however, that Elmswell has grasped the concept of, 'effective communication', and extended it beyond the 'distressed' to all of us. Our 'Covid Crew' were one of the first such support networks to set up and, as they link in via the Parish Council with Mid Suffolk, SCC, St John's and other agencies, there is a safety net which is provably effective. Long after the much-vaunted and vacuous, 'Big Society', political tag line, we are demonstrating, 'Small Community Sticking Together', and it works. We are adapting a common-sense approach to the London bias of the regulations designed to prevent overcrowding on the tube and too many joggers. So far so good. We have distinct advantages in our favour. Many of us have a garden. Even a space no larger than a double duvet is welcome relief that a high-rise balcony cannot afford. With a garden comes a fence to talk through and, often, a shed to disappear into. We have life on a human scale. The food shops continue, with sensible adaptations, to serve and their prices remain as before... no profiteering and a remarkably patient, cheerful service despite some testing challenges from an often apprehensive and sometimes downright selfish public.

These people join the Police, the NHS, our milkmen, binmen and countless community servants and volunteers as heroes for our time.

There are other positives:

- fewer aeroplanes, less pollution, clearer skies and the space station is clearly visible at night;
- without recourse to the salon, true hair colours will emerge making, 'how old do you think they are?', less of a lottery;
- peoples are actually using (undoubtedly within their allotted daily trip outside) the trim trail at Blackbourne;
- with MacDonalDs closed, litter levels have dropped dramatically.

...and some that run deeper, perhaps:

- ? our legislators may begin to realise that, 'worth', and, 'pay', are not at all fairly linked – every Chief Executive needs an office cleaner;
- ? that the strong community drivers of, 'certainty', and 'entitlement', are social constructs which crumble in the face of the realities of, say, a bit of a virus;
- ? that Oscar Wilde's observation relating, 'cost', and, 'value', is worth considering when, in the sunny uplands of a Covid-free world, we assess the value of shopping locally;
- ? certain commonly held football inspired philosophies might deserve revisiting and, for example, it might be better, until further notice, to consider walking alone.

Our pages also tell of real, tangible, progress in various areas which bode well for life after lockdown. The Greene King site now belongs to the community. The Wesley project is emerging and exceeding expectations. The long-promised extra land at Blackbourne is actually happening. These, to continue our theme, are not to be sneezed at.

**UNTIL FURTHER NOTICE WE WILL PUBLISH ON LINE AT [ELMSWELL.SUFFOLK.CLOUD](https://elmswell.suffolk.cloud)
HARD COPIES WILL BE AVAILABLE, BY KIND PERMISSION, AT THE VILLAGE SHOPS THAT ARE OPEN.
COPIES ARE ALSO AVAILABLE THROUGH YOUR DOOR, OR FOR A NEIGHBOUR**

**Call 244134 (do leave a message if it's the answerphone)
or email**

clerk@elmswell.suffolk.gov.uk

CLUBS & SOCIETIES



ELMSWELL ART CLUB

Time on your hands? Looking for a new challenge, a new hobby? How about painting? Where do you start, what do you need? Paints, paper, brushes and something to paint. There's loads of options depending on whether you want to try watercolour, oils or ceramics, the choice is yours. An important tip, don't overspend initially, wait to see how you get on and see whether you like it. There's always time to splash out later. What to paint can be a bit of a problem at times but there are hundreds of sources from which to choose, magazines, holiday brochures, animals, friends and family photos, flowers from the garden, you name it and there will be something out there to inspire you. Where to paint can also be a problem. There is, of course, the Elmswell Art Club on a Tuesday morning! At home spare



bedrooms can be used, the kitchen table, dining table, any place where there is adequate light. Natural light is favourite but that is not always possible. Artists the world over all prefer to work with as much natural light as possible but so many are obliged to use artificial light. Once you really get the bug you can always splash out on costly 'white light bulbs'. I do wonder how the artists and painters in the past managed with flame torches and candles. Places like St Ives in Cornwall, Avignon and Arles in France attract many artists due to the wonderful natural light there. Van Gogh spent some long time in Arles because of the light. Perhaps the most noted artist famed for his depiction of light in paintings is our own John Turner.

Greta Davies did the painting of the River Ribble at Sawley in water soluble oils and the Ponte Vecchio Bridge in Florence was done in watercolour by Josephine Hale. This is a sight we may not be able to visit for some time due to Italy's lockdown caused by the Coronavirus.

John Welford 01359 240166



Light is therefore colour... JMW TURNER

ELMSWELL EXCHANGE SOCIAL CLUB

Our meeting this month was cancelled due to the current health situation.

Unfortunately the meetings are cancelled until further notice.

If any members need anything please let me know if I can help.

At least the sun is shining and the spring flowers have been lovely.

Look forward to seeing all of you later in the year.

Carol 242 884

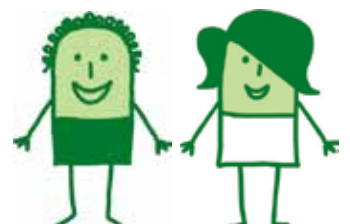


Burnett Barker
Solicitors

Ask us
about our
Fixed Fees!

Helping you with the legal issues you don't have the time or expertise to deal with...

- ✓ Family Law
- ✓ Wills, LPAs and Probate
- ✓ Residential Conveyancing
- ✓ Crime and Motoring
- ✓ Business Legal Services
- ✓ Disputes and Litigation



Call **01284 701131**, visit **burnettbarker.co.uk** or pop in and see us at 20 Whiting Street, Bury St Edmunds - free parking on site!

PARK GARAGE SERVICES

Units 1-2, Station Rd Industrial Estate, Station Rd, Elmswell, Bury St. Edmunds, Suffolk IP30 9HD.

ALL TYPES OF SERVICING - WELDING - MOT WORK - CLUTCHES - EXHAUSTS - SHOCKS
AIR CONDITIONING - TYRES - COMPUTER DIAGNOSTICS - BATTERIES - CAMBELTS - BRAKES



Your **LOCAL GARAGE** with over 20 years experience servicing and repairing all makes and models.

TEL: 01359 242479 OR VISIT: WWW.PARKGARAGESERVICES.CO.UK

Hicks TV & Audio Solutions

(Formerly BV Hicks Ltd)

**Are you having trouble setting up or operating your TV / Audio or DVD?
Has your equipment stopped working?
Does your TV need a re-tune?**

**Help is at hand - Call Toby Hicks
01449 771991 / 07968 686035**

NEW DOMESTIC APPLIANCES AND TV PRODUCTS SUPPLIED



Residential & Commercial Cleaning Services

- Carpets
- Upholstery
- Curtains
- Hard Floors

call Peter on 01359 241577
email: peterjedmonds@tiscali.co.uk
ServiceMaster West Suffolk
Little Acre, Ashfield Road, Elmswell IP30 9HJ

The Old Tea Room Veterinary Surgery

For a professional caring service



Tel: 01359 241 761

Station Road, Elmswell, Bury St Edmunds IP30 9HA

A member of Stowe Veterinary Group
www.stovevets.co.uk



HAYWARDS

SOLICITORS

FOR ALL YOUR FAMILY LEGAL NEEDS

We offer Fixed Fees at Competitive Rates

Telephone: (01449) 613631
email: enquiries@haywards-solicitors.co.uk
www.haywards-solicitors.co.uk
Free Car Park Available For Use By Clients.
7 - 9 TAVERN STREET, STOWMARKET, SUFFOLK IP14 1PJ



F. G. BROWN
- OPTICIANS

Denmark House,
41 Bury Street,
Stowmarket

Tel:- 01449 612812/674030

As independent opticians we offer a more personalised eyecare service that you can trust for all the family including:-

- Optomap retinal examination
- Colorimetry

A wide range of competitively priced frames and spectacle lenses

- Contact lenses

Prescription and non-prescription sunglasses

Your sight care is our priority

CLUBS & SOCIETIES

ELMSWELL GARDENING CLUB

As with all organisations that meet in Elmswell our programme of talks has been cancelled for the foreseeable future, but speakers have intimated that they will look to visiting us when the time is right. We are in unprecedented times and need to keep well and safe until we can meet again.

We were ready to welcome Head Gardener, Chris Reeve from Helmingham Hall to talk about 'A Gardeners Year at the Hall' for our second meeting of the year. It was to be an opportunity to find out what we could expect to see on a visit later in the year. Now we do not know what we are missing but can rest assured that when the time is right Chris will return to share the magnificence of Helminham.

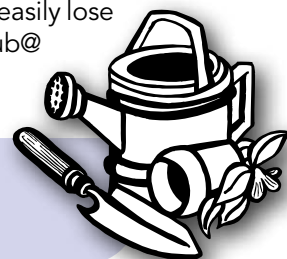
The station flowers planted in the autumn are looking spectacular in the spring sunshine. The Gardening Club will not allow this tiny corner of the village lack lustre during these strange times. We will be looking to refresh the tubs and set up a watering rota ready to welcome the summer as the situation allows. This will be the 10th year that the club has taken responsibility for giving a genuine welcome to visitors and residents as they visit Elmswell station.

Nature is putting on a stunning spectacle as spring concentrates upon what it does best. Gardens and outdoor spaces around the village are full of daffodils, the tulips are hard on their heels and amongst the foliage primroses and cowslips hold up their pretty faces. In just seven days since we were due to meet, normal social activities have been curtailed for adults and children alike. Many of us have found ourselves digitally challenged as computers, smart phone and the good old telephone have become a vital line of communication with friends and family. I would encourage you to get out outside in your garden space for a little time each day and see what changes you can make to encourage the new growing year. Sprinkle a packet of seeds into pot of soil, gently dig over a border and reposition plants that needs a bit more space. If you have sight of trees from your window or patio, watch them bud and bloom. As I write, the Suffolk sky is a brilliant blue and the birds are singing. Now really is a time to focus on uplifting things for despite everything nature is at work.

Those of us with space to grow or an allotment to tend have been able to lose ourselves in the act of preparing for even better weather to come. Gardeners know from experience, that time outside tending our plots we easily lose ourselves in the act of gardening. Give it a try, and don't forget you can always email at elmswellgardenclub@gmail.com There will always be someone that we can call on to answer your question.

Keep safe and well.

If you require further information about Elmswell Garden Club (EGC), please contact Catherine, on 01359 242172 or Nick, on 01359 242601. The Club email is elmswellgardenclub@gmail.com and is a good way of asking a question that will be swiftly answered.



ELMSWELL EXCHANGE W.I.

A JOURNEY AROUND THE MYSTERIES OF EASTER ISLAND

Elmswell Exchange Afternoon W.I. spent their March meeting with Chris Parfitt who took us on a guided tour of Easter Island. It comes under the auspices of Chile but is, in fact, over 2,000 miles away. A very remote place which would have been overwhelmed by the Pacific Ocean had it not been formed from volcanic rock. It is, of course, most famous for its 900 monumental statues, constructed in the 13th to 16th centuries and representing their ancestors. This photo taken by Chris shows an ancestral cemetery with the statues in a line behind. You can judge their size by the very small person standing nearby. Will we ever know how they achieved this great feat, I wonder. This is sacred ground and visitors are expected to respect this fact. The native name for the island is Rapa Nui. Their language is Spanish and, of course, their native Rapa Nui.

The island is only small (14 miles x 7 miles) and the landscape photo shows pretty much the whole island. There are three extinct volcanoes. It was a most interesting afternoon. Our competition was "An unusual and quirky item". Our members did not fail us. Chris selected his favourite three and first was Margaret Hitchins (hope I've got it right this time Margaret), second Jayne and third Betty Phillips.



theWI
INSPIRING WOMEN

We had even more new members this month and we hope they enjoyed their afternoon.

Guests and new members are always welcome. For further details contact Mary on 245022 or Maureen on 241033.

Next month we are going to enjoy a film of Favourites from The National Ballet followed by Riverdance. Great music and amazing dancing talent.

Transform your old conservatory into a room you can use all year round



With a solid roof from Frames Conservatories Direct

If your conservatory has an old glass or polycarbonate roof you may find it doesn't get used to its full potential. By simply replacing the roof with a lightweight solid roof, you can completely transform your conservatory into a room you can use all year round.

For a room you can use all year round, call us now on:

★★★★★ MULTI AWARD-WINNING

Frames Conservatories

Your Complete Home Improvement Centre

Direct

**01284
799470**

Or visit www.fcdhomeimprovements.co.uk

Your nearest showroom is at Unit 3, Barton Road Retail Park,
Bury St Edmunds, Suffolk IP32 7BE (Nr Farm Foods)

ALUMINIUM PRODUCTS ★ CLADDING ★ WINDOWS ★ DOORS ★ CONSERVATORIES ★ FASCIAS & SOFFITS



FENCING, GARDENING & PATIOS

All fencing supplied and erected

All garden work...regular maintenance or one-off

- Grass cutting up to 3½ acres
- Garden Clearance
- Tree Felling • Stump Grinding
- Concrete bases laid • Sheds erected
- Turf Laying • Artificial Turf
- Driveways
- Garden machines serviced and repaired

No obligation quotes

Contact Andy

01449 403050 077487 85197

wade.andrew63@gmail.com

TRAVEL STOP
BIG ENOUGH TO OFFER THE WORLD, SMALL ENOUGH TO CARE.

CORONAVIRUS

At Travel Stop, with three local offices and twenty staff, we are working tirelessly for our customers who booked with us, at no cost to them.

We are here to help you even if you have not booked with us. If you are unable to get answers, we will try to help you. All we ask is that you support local business and book with us in the future.

Find your nearest branch at www.travel-stop.co.uk



Is your club,
society or
charity in need
of **PRINT?**

call Jason on 01473 652354

or jason@printingforpleasure.co.uk

Printing for Pleasure Ltd
Elder House | Chattisham
Ipswich | Suffolk | IP8 3QE
www.printingforpleasure.co.uk



AROUND & ABOUT

ELMSWELL HISTORY GROUP

Our speaker on 12 March was Frances Hart, whose subject was 'British Canals and Waterways'.

Frances worked for many years with the Inland Waterways Association and has a very broad knowledge about the subject.

The IWA was formed in 1946 for the protection and restoration of the country's 6,500 miles of canals and rivers. Frances mentioned several canals and the following is an example of one of the canals still under restoration - the Bridgewater Canal, started in 1761 to transport coal from the 3rd Duke of Bridgewater's coal mines to the industrialised city of Manchester.

It connects Runcorn to Manchester and Leigh in the North West, to the Trent and Mersey Canal, to Liverpool and the Manchester Ship Canal. James Brindley was the architect and his design included an aqueduct to carry the canal over the River Irwell. Like most of the canals, with the coming of the Railways and then Road Haulage, much of the canal trade was lost and the canals gradually deteriorated until they fell out of use altogether. However, there is now much more interest in preserving the waterways and many of them are now navigable.

To end her talk, Frances spoke about the River Gipping which had its source near Mendlesham Green and was in use as far back as 860 AD. The coming of the railway in 1846 led to a decline in the River's use and business ceased in 1934. The Ipswich branch of the Inland Waterways Association started restoration work in the 1970's and in 1994 started work on the restoration of Bosmere and Creeting Locks by the River Gipping Trust.

Future Meetings

Following the recent announcements by the Prime Minister, the History Group committee has decided that we cannot meet for the next few months, i.e. until further notice. So, certainly our next two talks, on 9th April and 14th May will not now take place. After that, we will just have to see how things are, in these uncertain times. Meanwhile, we hope you will all keep as healthy as possible and look forward to meeting again as soon as we are able.

Appeal to Internet Users

In your internet browsing of auction or similar sites, should you come across any Elmswell items such as old sales particulars, letters, maps, postcards, or indeed anything at all to do with our village, the history group would be interested to see these as possible additions to our local archive. Many thanks.

For further information about our History Group, our website is www.elmswell-history.org.uk or please contact our Secretary, Stella Chamberlain on 01359-242601.

ELMSWELL OVER 55'S CLUB

As you are all aware Covid 19 (Coronavirus) is now a serious threat to everybody especially the older age group so if you have elderly neighbours please check they are ok perhaps a phone call rather than physical contact.

On Monday March 16th it was decided to cancel all club activities the fish & chip supper being the first victim followed by the holiday to Llandudno. There will be no meetings for the foreseeable future. It is hoped that if and when things settle down we will be able to meet again at the Blackbourne later in the year.

In the meantime just a few photos of the good times featuring Brotherhood at our one and only meeting of 2020 and the committee receiving a cheque at the Fireman's Presentation Evening.

Stay safe from all the committee.



P H Peckham

Plumbing and
Heating Engineer

28 Eastern Way

Elmswell

Tel. 01359 240958

Mob. 07802 642884

Email:

phpeckhamplumbing@gmail.com

Gas Safe Register No 214650



214650



- 24 HOUR CALL OUT
- FREE Estimates
- Corgi Registered Solid Fuel, Oil or Gas
- Bathroom Suites Designed and Installed
- Water Softners Fitted
- Tiling
- Boilers Serviced

Wayne Salmon Electrical

For all your electrical requirements - Domestic, commercial and industrial.

All work carried out to a high standard.

Mobile 07843 302798

Phone: 01359 242145



M.O.T. DUE

Require a quick reliable service ?

M.O.T. classes 4 and 7 tested.

Tests available for all types of cars and vans up to 3.5 tonnes gross.

Local collection service available.

Also repairs and servicing available on request.

**D A BEVAN
THE WORKSHOP
GROVE LANE
INDUSTRIAL ESTATE
ELMSWELL**

PHONE 01359 241158 / 244421

CRJ

Accountancy

The Tax and Accountancy Service
for Small Businesses
and Taxpayers

Self Assessment, Tax Returns,
Annual Accounts, Book-Keeping,
Employed, Self-Employed or
Starting a New Business

For a free initial discussion without
obligation call

**Clive Jenkins
Tel 01359 230231**

www.crjaccountancy.co.uk

BLOMFIELD MAINTENANCE

GAS ENGINEER

Natural and Propane (LPG)

Servicing and repairs of:
BOILERS, COOKERS, FIRES

COMMERCIAL CATERING
EQUIPMENT

Installation of:
COOKERS and HOBS



LANDLORD GAS
SAFETY CHECKS

01359 241454

07889 616937

TONY FISHER PLUMBING & PROPERTY MAINTENANCE

- 24hr Emergency Callout
- Bursts, leaks, blockages etc.
- Bathroom/shower installation
- Tanks/cylinders/radiators
- Tiling floors/walls
- Painting & Decorating
- General DIY jobs
- Garden Maintenance

Tel. 01359 242556

Mobile 07758327743

Reliable & Friendly Service!



PAUL SCASE Home Improvements Painting

Interior & Exterior

Painting

- Using the best named paints to give you a professional finish
- Colour charts provided to give you the best choice of colours

- General Carpentry & DIY

Excellent Rates

Mobile: 07745 250440



Carpentry

- Wardrobes made to your design
- Floor to ceiling, wall to wall

AROUND & ABOUT

ELMSWELL COMMUNITY PRIMARY SCHOOL

We have had a busy spring term this year. Our school was inspected in January and I am delighted that OFSTED recognised that we continue to be a GOOD school.

All of the school staff work hard to ensure that our children receive the best possible experience and the inspection report recognised this by acknowledging that staff were "ambitious for their pupils... and provided support, reassurance and encouragement to help the pupils do as well as they can."

The report also comments on how happy the children are and that they were interested, enjoying their lessons and behaved well.

The curriculum has been developed over the last few years so that the content is varied and challenging and the report comments on how the children enjoy the wider opportunities offered by our schools such as clubs, theatre trips, residential visits and links with St. John's Church.

A full copy of the report is available here. <https://www.elmswell.suffolk.sch.uk/suffolk/primary/elmswell/site/pages/information/ofstedreports>

We said goodbye to our Administrator, Mrs Lunken who is replaced by Mrs Miles in the office and we also welcomed Miss Woollin to the team on the front desk.



Several classes have held Curiosity Cafes (Community Assets for Education) which allow us to work alongside parents and carers to support pupils' learning and development. Parents and carers learn with their child and can be inspired to create something together, ideas can then be taken away and used at home. Fox and Badger classes have been making good use of our Woods with a weekly Forest School lesson. The Forest School approach creates a space in which children feel inspired and motivated to learn. By having a direct experience with nature, this active learning style nurtures the social, emotional and physical development all children need in order to become more independent and confident learners.

In February our Year 5 pupils were invited by Thurston Community College to see their musical performance of Joseph and the Amazing Technicolour Dreamcoat. It was a fantastic performance and enjoyed by everyone.

Our supportive FRESCH team (Friends of Elmswell SCHOOL) have been busy again this term, a successful cake sale took place as well as a sponsored Readathon event to celebrate World Book Day, both of which have raised money for the school. The Year 5 and 6 children will be enjoying a disco later this term.

Nursery

If you have a child born between 1st September 2016 and 31st August 2017, they may be able to join our school nursery from September. Our Nursery children (Rabbit class) have opportunities to join in with many parts of school life including assemblies, school lunches, school performances and trips. Applications are also accepted for children who may be too young at the present time but would like to join at an alternative date. For further details or to apply for a place please see our website or phone 01359 240261.

Midday Supervisor Vacancies

Finally we do have current vacancies for midday supervisors who work during lunch time to help supervise meals and playtimes. This is a paid post (currently £9 an hour) and is subject to a satisfactory DBS check. Application forms and further information are available from the school office.

For further information about the school, term dates, PD days and to see details of events and activities coming up in the future, please visit our website at www.elmswell.suffolk.sch.uk



J Ash, Headteacher, Elmswell CP School 01359 240261 ©



TBS HIRE

Available to Hire from a modern Fleet:



- Diggers & Dumpers
- Access Equipment
- Power Tools
- Concreting Equipment
- Landscaping & Garden Machinery
- Stump Grinders and Chippers

Plant & Tool servicing and repair also undertaken

Thurston Rd,
Great Barton,
Bury St. Edmunds, Suffolk, IP31 2PJ
T: 01284 788122
E: info@tbs-hire.co.uk

www.tbs-hire.co.uk



FOR SALE quantity of Paviours

as recently removed from the Wesley during refurbishment

200 x 100 x 50mm

Enough to cover approx. 120 sq. metres

Offered in any quantity

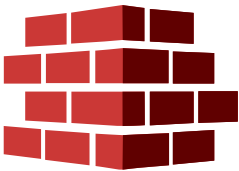
No reasonable local offer refused

Contact the Council office on 01359 244134
clerk@elmswell.suffolk.gov.uk

01359 259 259

Suppliers & Manufacturers Agricultural, Retail & Building Materials

CLARKES



BUILDING MATERIALS



FENCING SUPPLIES



POWER TOOLS



GARDENING PRODUCTS



CALL



CLICK



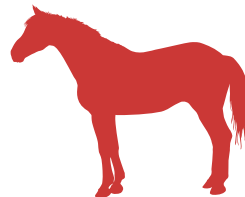
BUY IN STORE



SHOOTING SUPPLIES



COUNTRY CLOTHING



EQUESTRIAN PRODUCTS



ANIMAL FEED

www.clarkesofwalsham.co.uk

Clarkes of Walsham Limited

The Street • Walsham-le-Willows • Bury St Edmunds • IP31 3BA
Monday - Friday: 7.30am - 5.15pm Saturday: 8am - 4pm

Clarkes of Walsham at Jimmy's Farm

Pannington Hall Lane • Wherstead • Ipswich • IP9 2AR
Open 7 Days a week



ELMSWELL MEMORIAL LIBRARY

Hello Elmswell,

As we are all aware March took an unexpected turn which unfortunately has meant that Elmswell Library is currently closed until further notice. This also means that the community café will not be happening either.

Due dates have been extended and fines will not increase over the period we are closed. I know many of you have been worrying about that and please make sure anyone you know who might be worrying about it also is aware. If you have any questions the best contact currently is Suffolk Libraries Customer Services on 01473 351 249 or email help@suffolklibraries.co.uk

Our eLibrary service will still be available. Here you can download ebooks, listen to audiobooks, read newspapers and magazines, listen to music and watch films. There are instructions on how to set these up on the Suffolk Libraries website www.suffolklibraries.co.uk/elibrary/

While we are closed we will also be posting daily to Facebook. This includes information about Suffolk Libraries, Baby Bounce session

videos, Lego ideas, tutorials of how to use the eLibrary services and other things that might be interesting like links to storytellers doing stories for children and stories for adults. Our facebook page is www.facebook.com/ElmswellLibrary/

While we are away we are also spending time to look at what more we can do once the library opens again and will have more information next month.

Stay well and I hope to see you soon,
Miles

What's on at Elmswell Library?

Baby Bounce

There will be a Baby Bounce related Facebook post early each week.

The Keep in Touch Community Café

Cancelled until further notice.

Lego Club

Lego ideas will be posted on Facebook every Sunday.

The Velveteen Rabbit performance by Spinning Wheel Theatre Company

Postponed until further notice.

Elmswell Library Friends Group AGM

Postponed until further notice.

Miles Row
Elmswell Library Manager

Opening Hours

Day	Hours
Monday	Closed
Tuesday	1000 – 1900
Wednesday	1000 – 1900
Thursday	1000 – 1900
Friday	1400 – 1700
Saturday	1000 – 1300
Sunday	1000 – 1500

Tel: 01359 240974



CLOSED UNTIL FURTHER NOTICE



SAVE THE DATE - SUNDAY 6th SEPTEMBER 2020

Contact: chris.wiley@hotmail.co.uk



I think it's fair to say that these last few weeks have been extremely difficult for many people, and the uncertainty of what's going to happen over the coming weeks is challenging for everyone. There has obviously been a vast range of events cancelled on the run up to summer, which is extremely sad to see, but completely understandable. However, we are still very much intending to run ElmsFest once more...we, sadly, received no response to our plea for more volunteers to take ElmsFest forward from next year, so it is with great sadness that this will be the very last year – unless somebody steps forward within the next few weeks.

A few things to look forward to... as previously mentioned, Circus Avago and Wonder Wheelers will be returning to ElmsFest, as well as a flypast from an RAF Spitfire! There will also be plenty of live music to keep you entertained throughout the afternoon, including performances from Pop Chorus, Serena Grant and Nine Way Spin, all confirmed so far. More to follow over the coming weeks! ElmsFest takes place at the Blackbourne Community Centre on Sunday 06 September, from 12:00 til 17:00. Hot/Cold food will be available all afternoon, including the return of ElmsCafé – our award winning (or so we like to think) in-house catering service!

Who knows where the country will be in September, but the ElmsFest team will continue to strive to bring you an event to remember – with the proviso that we will not be accepting any payments for Business or Craft Stands until it is clear that the event will still run – this may well mean taking money on entry. We will endeavour, as always, to secure sponsors again, on the understanding that should the event be cancelled, all sponsorship money would be used for the good of the village – exactly how and where will be decided at a later date. Please keep an eye on the Newsletter and our Facebook page for further information.

Stay safe and keep well.

Chris, Brittany, Mike and Sol

COVID19 COMMUNITY CREW

It's in time like these when we all need to find some community spirit...and wow aren't we lucky to be living in Elmswell because there's a lot of it out there!

Last weekend I put a post out on social media to see if we could get some volunteers together to post flyers through neighbors doors, offering our assistance with tasks such as shopping should they need to isolate. Little did I know that within a few days we would have a team of over 60 people covering every single road in Elmswell.

Times are a little worrying at the moment but if we all pull together as a community, we will come out of this a lot stronger.

If you haven't already had a flyer through your door then you will do very soon. If you need help in any way, please don't hesitate to make contact if you are unable to leave your house as normal. There's a very big team of us so we can all share the load.

Volunteers have been inundated with messages of thanks and are simply happy to get to know their neighbors that they have been living along side for years and not known. We have already carried out prescription runs, delivered shopping and been at the end of the phone for those in need. Please also rest assured that whilst carrying out tasks we are practicing good hand washing and leaving any items on doorsteps.

We have also been contacted by Woolpit Health Centre in assisting with prescriptions deliveries. A small team have formed to assist the Health Centre with deliveries in and around Elmswell so please do not worry, if you normally have your prescriptions delivered, this will still happen.

To keep up to date with any news in Elmswell, to reach out for any assistance, or to help in any way please join "Elmswell virus support group" on Facebook.

I feel a big party is needed at the end of this!

Rachel



I think we can all agree that good Mental health is going to be key to making it through this time as self isolation occurs more and lockdown becomes more likely.

If you are willing to make phone calls to people, say once a week or if you feel isolated and would love to receive the occasional phone call, please contact Peter Goodridge, the rector at St.Johns and he will co-ordinate callers and receivers.

Peter can be reached at Tel: **01359 240512** or
E-mail: **elmswellrector@gmail.com**

Thank you

Please note this does not counter what people have signed up for with leaflet dropping and the Covid Community Crew, it's an extra as some people can't take part in the Covid Community Crew operation but would like to help.

Best wishes,

Peter

Revd Peter Goodridge

Rector, St John's Elmswell

01359 240512

<http://www.stjohnselmswell.org.uk/>



In light of the current situation, Sarah Jane Fitness will be providing a full timetable of online fitness classes starting Monday 23rd March - live and direct from my kitchen!

For details, please visit my facebook page @SARAH JANE FITNESS or email me on sarahjane.fitness@outlook.com

Keeping happy, healthy and positive is vital during times like this and these classes should be a perfect way to do just that!!



COVID19 COMMUNITY CREW



I'm Angie Shaw and I distributed help leaflets to Ashfield Road on the Blacksmiths Way side up to Oak Lane to include the houses on the front of both sides of Blacksmiths. I also did coming back from Oak lane on the opposite side up the house just before Virginia House. Someone else did from Virginia house up to St Edmunds Road.



Becky Brunning of Miller Close is pleased to help...



I'm Collette and I have delivered to Cross St and Prescott Drive



My name is Emily and I distributed leaflets to school rd and Pigtlet Close. I have helped deliver a prescription and have had several grateful phone calls and texts, some offering help if I need it too!



My is Emma Ridgeon and I delivered flyers to residents in Rowan Green



Frances Hall helping out in Gardeners Walk



My name is Hazel and I have distributed flyers to Pyes Meadow.



Jen - offering to do errands for people in self-isolation and looking after half of Whatley Close and half of Cooks Road.



My name is Jen Bunning and along with Zoe De'ath we've covered St Edmunds Drive and Hall Lane



I am a volunteer to help the self isolators for Cresmedow way my name is Kelly.



I am Lauren Emms, offering dog walking services on my days off work. I am a dog groomer therefore am used to dogs of all temperaments.



Lisa & Peter helping wherever needed.



Hi, this is Ria and Steven - we are covering part of Gardeners Walk and part of Rose Lane to provide support for people who need it!



Sarah Jones has delivered her flyers down half of Blackbourne Road.



My name is Steph Newton, we have delivered offers of help to Wyatt close and Borley Crescent. It's a family effort!

Thanks and take care



My name is Emma Hemingway & down to cover New Road at the moment... happy to help anywhere if needed!



I'm Emma and I (with the help of my children Molly & Isaac and my husband Dan) have delivered flyers to Lyle Close, Grove Lane, part of Oak Lane and part of Ashfield Road. I have had a few positive responses already which is great and feel we can get through this if we all stick together as a community



My name's Gail Webb and I covered Jubilee Terrace and Laurel Court



My name is Gillian Rowell and I have posted leaflets and am offering my help to everyone in William Armstrong Close. I've had some lovely messages and calls from people that are pleased to know there is someone there if needed and offering their help too. What a great way to get a real community feeling in our village but especially our Close!

I am 63 and am working part time doing finance administration at home and child minding my grand children as my son and his wife both have key working positions in nursing and the prison service. We have a grandson on chemo and a 9 month baby to watch out for together with the help of their 18 and 16 year old siblings. Everyone stay safe and look out for each other!!



Jodie – one of the Covid Crisis volunteer helpers



Joy delivered offers of help to Warren Lane & Warren Gate with Louise



My name is Julia Rance and I covered Whatley Close and Oak Lane



Hello, I'm Liza and I'm keeping an eye on Bennett Avenue.



Louise Lambert I helped out and posted leaflets in Warren Lane



I'm Maria in Farm Meadow – always ready to help!



Will and Victoria Sutton are covering Little Green Crabtree Meadow and Grange meadow



Yvette Hill



I have volunteered to deliver leaflets as part of the virus support group, and help anyone who may need supplies or any other help. My name is Zoe De'ath and have delivered with my friend Jenny for all of the Kingsbrook Estate. Stay Well and Safe



ST JOHN'S CHURCH

www.stjohnselmswell.org.uk, elmswellrector@gmail.com, 01359 240512 and www.facebook.com/stjohnselmswell/ If you are in self-isolation, or desperation, and require assistance, please get in touch. We will help.

This month, rather than list our news, updates and future plans, we would like to take the opportunity to share this letter with you. For the most up to date news, please visit our web and social media pages. Thank you.

Dear friends,

We are heading into a period of uncertainty and, for many, distress. Most of us have never had to face the radical measures that are being introduced, not just in the UK, but throughout the world. At such a time as this, we need to remember these important words from Psalm 46:

God is our refuge and strength, an ever-present help in trouble. Therefore we will not fear, though the earth give way and the mountains fall into the heart of the sea. (Psalm 46:1-2)

At the PCC meeting last night, it was agreed that St John's will not meet physically in our church building for the foreseeable future. Instead we will use the internet to stream a shorter service at 10:30am each Sunday, with the option of those without internet to dial-in and listen using a standard telephone. We will let you know more details soon.

During this time we also hope to have the church building open at certain times during the week for individuals to come and pray and we hope to use one of the outside trees as a large Prayer Tree. Finally, the church tower will be lit up every evening – on those evenings when there is no existing sponsorship, we will be thinking of and praying for those affected in whatever way by the situation caused virus.

If anybody requires any shopping or wants somebody to talk to on the telephone, please let us know. We will be sending out regular updates, prayers and offers of support together with details of how we, as a church, will continue to be here for you.

A few weeks ago, I took a trip out into a huge lake in the heart of Cambodia. A Vietnamese community live there, each family living in floating houses. It feels very isolated. The houses are not large – they are single storey and are about twice the size of our living room for a family of 5 or 6. Despite boatloads of tourists that sail close by to take pictures, there are few visitors who come and engage with them. Being Vietnamese they are often ostracised in Cambodia, due to centuries of past hatred. They are charged exorbitant fees if they wish to travel to the shore and dock.

However, God is at work there in that isolated community. The church is little more than 10 years old and yet the Christians have provided a floating school for the children. One Christian mother told us the tale of how she could not afford the \$20 docking fee to take her 2 sick children to hospital. All the family could do is pray – and God healed them. Another man told me how he was cured of alcoholism and smoking, since committing his life fully to Christ.

As we move into a time of feeling isolated, fearing for our health and future, the one secure hope that remains is Jesus Christ. I have been privileged to see how powerful and faithful he is over the past few weeks and I know I need to take this with me into the coming months. I want to encourage us all to remember this and to pray this beautiful prayer frequently:

Keep us, good Lord, under the shadow of your mercy in this time of uncertainty and distress. Sustain and support the anxious and fearful, and lift up all who are brought low; that we may rejoice in your comfort knowing that nothing can separate us from your love in Christ Jesus our Lord. Amen.

*With every blessing in Christ,
Peter*



ST. JOHN'S CHURCH TOWER FLOODLIGHTING

Please note for the foreseeable future the church tower will be illuminated on all evenings when there are no personal sponsorships, this to support and remember those affected in whatever way by the Coronavirus pandemic.

However, personal sponsorships are still welcomed, and you are invited, as before, to sponsor the floodlighting of St. John's to help with the day-to-day running expenses of our parish church. You can choose to commemorate a personal event, an anniversary, or any other special occasion. Alternatively you can simply make a donation.

A night's floodlighting costs £5, cheques payable to "ST. JOHN'S CHURCH, ELMSWELL".

During April the lights will be on between 7.30 p.m. and midnight.

Thank you very much for your support.

APRIL 2020 SPONSORSHIPS

- 5 to remember and thank all those Elmswell Fire-Fighters who have served their village and community so well.
- 9 remembering Grace Rush, a dear Mum, Grandma and Great Grandma, on her Birthday.
- 9 Dennis Hopper. Remembering my dear Dad, who left us 9th April 1998. "Loved and remembered always". Sally & Alan, xx.
- 14 remembering Carl Finch on the anniversary of his death in 1999.
- 14 in memory of Ray Borrett's Birthday.
- 17 in loving memory of Jane Goodchild. Love, Colin. xx.



- 20 in memory of Jim Baker (1933 - 2009) on his Birthday.
- 22 in loving memory of Teasel - never ever forgotten..
- 23 remembering Carl Finch on St. George's Day.
- 26 in memory of Colin Plowright, Elmswell C.C.
- 30 in memory of David Lakey.
- 30 Ivy & Dennis Hopper. Happy memories of my Mum & Dad's Birthdays. Sally & Alan. xxxx.

All bookings and payments please to :-
Trevor Sadler, Abbots Warren, Church Road, Elmswell (Tel: 240908)



ELMSWELL BAPTIST CHURCH

We are certainly living through uncertain times aren't we? When times are tough, we look for solid, unchangeable things to base our lives on; the love of friends, work which satisfies and fulfils us. The Christian faith is based around the death and resurrection of Jesus, and Easter is the time that Christians mark these two pivotal events in world history. Christians know there is rock-solid reliable evidence for both these amazing events, demonstrated daily in the lives of millions of people worldwide.

Sadly, in view of the government's advice about congregating together we have decided that we cannot in all conscience continue with our programme at the chapel for at least the next 12 weeks. This will mean that there will be no services over Easter which is tremendously sad for us. We were looking forward to once again celebrating God keeping his promise when Jesus died and then rose again. It was God launching a fresh start for every man, woman and child for the rest of time – forgiveness, hope and a

real future. Do take the chance to look at any programmes on the television about this over the Easter period.

The Ladies Friendship Group will not now meet again until September 7th. Food 'n' Friends will not take place in April or May and there must be a question mark over June as well.


We will resume normal service (and services!) as soon as is possible and responsible. We will continue to make a contribution to the village newsletter each month although it will inevitably be shorter than normal for a few months!

Visit our website at www.elmswellbaptist.org.uk , email cockant2@btinternet.com or telephone 01359 241541 for further info. You can also find us on Facebook.



Tony

Elmswell Baby and Toddler Group



Today I sit here listening to the birds outside, the sun is shining and my little one is outside digging in mud, finding bugs and having rides in the wheelbarrow! Such a change from our normal Monday morning at Toddlers.



Before Toddler Group finished we had many craft activities including a beautiful giraffe with fingerprint spots and colourful trees for Holi. We also purchased some lovely new toys to help with physical skills (balance board, stepping stones and tunnels). Donna also brought along a song basket to share with everyone; this was made by collecting toys from around the house, finding a basket (charity shop buy) and then singing the tune "who is in the box" before opening up and choosing an animal from the box and then singing a song about them ie 5 little pigs for the pig toy.

Understandably at this time in the world our bi-annual sale was cancelled. Usually by the time you read this we are in the mists of counting labels are celebrating the amount raised for the group. We do thank those who worked behind the scenes in planning the sale. We also thank those who were prepared to volunteer on the day to help and to bake cakes.

Look after yourselves and your families, enjoy the time to slow down and treasure those moments and memories.



ELMSWELL FOOTBALL CLUB



Professional painting and decorating group
 Residential & Commercial
 Specialises in new build spraying
 Traditional painters for any job big or small
 Call for a free quote
 Mobile- 07814240840
 Office- 01379 741515
 Email- wjcpainters@outlook.com
 Website- www.wjcpainters.co.uk



TOMLINSON GROUND CARE



Horticultural & Garden Machinery Suppliers
 Sales Service Parts Repairs Toys

Al-Ko Echo Ego + Weibang walk behind petrol
 & battery mowers from £199 inc vat

John Deere ride on mowers from £2095 inc vat

Strimmers hedgecutters chainsaws etc

Garden tools paddock & turf machinery

Free friendly advice – Try before you buy

A family run business established in 1991

Brettenham Road Buxhall Stowmarket IP14 3DL
 01449 736060 www.tomlinsongroundcare.co.uk

CHAIRMAN'S NOTES

So world events are at the forefront of everyone's thoughts - & quite rightly so, health at the top of everyone's priority.

The lockdown has created a sense of reality, and with it a case for everyone to appreciate life & those things we all take for granted - we will all take a share of the burden and live it in good health with the hope & desire to get the country & indeed the world back on its feet.

It has had a massive impact on personal finances, and also on personal hobbies . Everyone has had to adapt in different ways.

As Chairman of Elmswell Football Club, it's such a shame the 2019/20 season has come to an end. Our first team probably in the best shape and position for as long as I can recall. Sitting several games in hand & looking comfortable for promotion. The lads have also beaten some good teams in the semi final of the Suffolk FA Primary cup - the final to be played on the hallowed turf at Portney.

Our reserves had had an enjoyable season , again with ups & downs on the pitch but they were successful throughout.

However, with a sense of perspective and reality, there are more important things in life than football.

So despite the disappointment of this season being declared null & void, we still hope to see the efforts of all teams in all the leagues & reward them with the chance to play out their season. Respecting the current health predicament it would bring a bit of joy to not only players but also those involved with & supporting amateur sport .

This almost feels like an end of season report, but that is still to come when as all the league results have been announced.

I would like to thank a few people at this stage

The players - a great bunch of lads through out the club, hopefully they appreciate the opportunity they have been given , and are more determined to regroup & do it again, only better , whenever next season comes.

The managers - Ed's & Rich done a great job with reserves, especially Ed's whilst also covering for the club secretary - thank you both

First team managers William & Jedrick , both with their first season as managers - they have been full of desire , full of promises & two great lads . They have managed to fulfil all there pledges to the fellas & thank you

The sponsors- thank you BADWELL ASH WHITE HORSE for your very generous first team kit. To all our match ball & club sponsors who have supported us through the season , it really has been great to be supported by everyone at the club.

So, as soon as we can, we will regroup & come again, stronger & more determined than ever before.

Please take care everyone, stay safe & please take care of your friends & family.

If you would like any information regards the mighty ELMSWELL FC , please don't hesitate to contact me on pratt@btinternet.com {great sponsor deals on offer !}

**YOU COULD
 ADVERTISE HERE
 MONTHLY TO OVER
 2000 ELMSWELL
 ADDRESSES**

**CALL
 SHAUN**

07494 864 231

PODIUM plumbing and heating

- BATHROOMS
- BOILER SERVICING
- NEW BUILDS
- RENOVATIONS
- GAS/ HEATING
- GENERAL PLUMBING

WWW.PODIUMPLUMBING.CO.UK
 HARRY@PODIUMPLUMBING.CO.UK

01359 240 454
 07540 589 187





ServiceMASTER Clean

Carpet & Rugs
Upholstery
Hard Floors
Curtains



tel. 01359 241577
mob. 07398251908
peterjedmonds@tiscali.co.uk

www.servicemasterclean.co.uk/west-suffolk/

& wellbeing should be

ate the important things
hopefully come through
track

one is affected, in many

to a premature end. Our
second in the SIL D3 with
great teams to reach the
Portman Road .

It still a great club spirit

than football .

be Suffolk FA recognise
the cups to the final - still
but many other people

guge & FA decisions have

decisions of the SIL & FA
n starts

doing an amazing job as

ame full of ambition, full
ges & more ! Well done

m sponsorship , but also
lly is very much appreci-

n ever

ate to contact me shaun.

ind regards, Shaun Pratt

Proud to sponsor
Elmswell FC
First Team



**THE
WHITE
HORSE INN**
BADWELL ASH
SUFFOLK



Farthings of Newmarket

are proud
to support
**Elmswell
Football Club**

5c Wellington Street, Newmarket Tel: 01638 560610
17 Whiting Street, Bury St Edmunds Tel: 01284 701060
143 Milton Road, Cambridge Tel: 01223 755180
www.farthingsdrycleaners.co.uk

BADWELL ASH

RUMBLES

FISH BAR

The Street, Badwell Ash, IP31 3DH

TELEPHONE ORDERS WELCOME
TEL: 01359 258258

OPENING TIMES

Monday - 11:30am - 9pm
Tuesday - 11:30am - 9pm
Wednesday - 11:30am - 9pm
Thursday - 11:30am - 9pm
Friday - 11:30am - 9:30pm
Saturday - 11:30am - 9:30pm
Sunday - Closed



WHAT GOES ON AT BLACKBOURNE?

There are currently more than 30 separate activities held at Blackbourne each month. When the new-improved Wesley is back in commission, hopefully in May, there will be scope for some of the groups which cannot be accommodated at the moment.

Meanwhile, by frequent request, we publish a breakdown of who does what and when. The contact details give access to more information and we have invited the various groups to give a brief outline of what they are about.



touching hearts, changing lives

on Tuesday Morning

The Tuesday morning Slimming World group at Blackbourne 9.30 am. is to be relaunched as soon as circumstance allow under a new consultant..

Jen Jeffery, an established member of Fornham St Martin group is using her personal experience to pass on to current members and newcomers alike the tips and techniques that guided her to a 2½ stone (16Kg.) weight loss following the guidelines that have led her and many like her towards a healthy, enjoyable way of eating where nothing is banned – treats in limited amounts are fine.

It's not a diet but a change of eating habits which, without the pressures of constant weighing and measuring, and in an entirely supportive, non-judgemental group, gently produces consistently amazing results.

With mums in mind, babies and toddlers are welcome.

Contact Jen by phone 07801757237 or email jen.sw19@yahoo.com

Or turn up when the big day is announced – it will be in your Newsletter.

Jen ready to pass on some tips



Jen before Slimming World



Bingo takes place the last Friday of each month, doors open 6.30 eyes down 7.30, cash prizes for the winners,

All money raised is donated to local charities and good causes, If you have never been before or are new to the village come along and make new friends, **A warm welcome awaits.**

Clearly, with a lockdown across the board, these events will be cancelled until further notice -

but we leave them listed so that, whenever we get the OK to start up again, we're ready to go!
(And as a reminder that we will be back to normal, hopefully in the not too distant future.)

MONDAYS	Baby & Toddler Group	morning	elmswellbtgroup@gmail.com
	Stretch & Flex	morning	sarahjane.fitness@outlook.com
	Ju jitsu	evening	07711 680262
	Guides	evening	sueguides2011@talktalk.net
	Circuit Training (MetaPWR)	evening	sarahjane.fitness@outlook.com
TUESDAYS	Slimming World	morning + evening sessions	07979 151248
	Art Club	morning	welford955@btinternet.com
	Beavers	evening	ruthcourt4@hotmail.co.uk
	Karate	after school	www.elmswellkarate.com
WEDNESDAYS	Circuit Training (MetaPWR)	morning	sarahjane.fitness@outlook.com
	Spin	morning	sarahjane.fitness@outlook.com
	Baby & Toddler group	morning	elmswellbtgroup@gmail.com
	Carpet Bowls	afternoon	Jf.boxall@btinternet.com
	Scouts	evening	hovels23@hotmail.co.uk
	Spin	evening	sarahjane.fitness@outlook.com
	Boxercise	evening	sarahjane.fitness@outlook.com
THURSDAYS	Circle dancing	afternoon	jenlerner@gmail.com
	Brownies	evening	elmswellbrownies@hotmail.com
	Spin	evening	sarahjane.fitness@outlook.com
	Legs, Bums & Tums	evening	sarahjane.fitness@outlook.com
FRIDAYS	Pilates	morning	info@pilateswithsuzanne.co.uk
	Total Body Blast	morning	sarahjane.fitness@outlook.com
	Spin	morning	sarahjane.fitness@outlook.com
	Karate	after school	www.elmswellkarate.com
	BATS (badminton / table tennis)	evening	edmondspeterj@gmail.com
SATURDAYS	Boot Camp	morning	hughes-fitness@hotmail.com
SUNDAYS	Spin	morning	sarahjane.fitness@outlook.com
FORTNIGHTLY	Companions	Friday mornings	linda@abbott.plus.com
	Over 55's	Thursday evenings	grantelliston@hotmail.co.uk
MONTHLY	History Group	evening - 2 nd Thursday	stellachamberlin@yahoo.co.uk
	Gardening Club	evening - 3 rd Tuesday	elmswellgardenclub@gmail.com
	Exchange Club	afternoon - 3 rd Tuesday	carolblissett@hotmail.co.uk
	WI	evening - 2 nd Tuesday	stevensmarg@tiscali.co.uk
	Exchange WI	afternoon - 1 st Wednesday	modavis6@gmail.com
	Trefoil Guild	evening - 1 st Tuesday	lesley.grout@btinternet.com
	Bingo	evening - last Friday	brian.hawes@suffolk.gov.uk
	Mardle Quilters	all day- last Friday	stevenson33z@btinternet.com
	Sewing Bee	afternoon - 2 nd Saturday	isabel.burgess@live.com
Arts Society of West Suffolk	morning - 1 st Tuesday	info@theartsociety-westsuffolk.org.uk	
OUTDOOR SPORTS IN SEASON	Bowls	Dick Burch	ann.richards47@gmail.com
	Cricket	Eileen Brooks	elmswellcricketclub@gmail.com
	Football	Shaun Pratt	shaun.pratt@btinternet.com
	Youth Football	Chris Smyth	smyth98@hotmail.com

KH

Kevin Hollings KITCHEN STUDIO



Unit 14 Lodge Works, Stowmarket Road,
Old Newton, IP14 4EE
01449 257160 www.kevinhollings.com
info@kevinhollingskitchens.co.uk

www.clearfinancialservices.co.uk

Worried about Savings?

Let our team of financial advisers help you to get the most from your savings and investments.

Confused about your pension?

We would be happy to discuss the options available for your retirement planning.

Want to protect your family or income or mortgage and loan?

We are here to advise on the most suitable solutions for your budget.

Mortgages?

For a competitive mortgage, we have advisers to assist with that purchase or remortgage.

We make it **Clear** Financial Services 



The Old Police House,
Cooks Road, Elmswell,
Bury St Edmunds,
Suffolk IP30 9DB.
Tel: 0345 271 3245

The value of your investments can go down as well as up, so you could get back less than you invested. A pension is a long term investment. Clear Financial Services is an appointed representative of Lighthouse Advisory Services Ltd which is authorised and regulated by the Financial Conduct Authority.



W. Jarvis & Son Tree Services & Landscapes

All aspects of tree surgery, landscaping and fencing undertaken



Fully insured, 24hr call out, council approved contractor and over 35 years in the industry

Call for a free estimate & advice T: 01359 241958 M: 07891208710 M: 07850046504
E: office@waynej Jarvisandson.co.uk

Visit our website for information about our company and the work we do
www.wjarvistreeservices.co.uk





WESLEY – the latest pictures of rapid progress, an impressive result emerging, and a grinding halt!



The chapel looking towards the rose window – high level painting under way.



The view from the contractor's cabin window – glazing and main door in place under the roof which is now finished.



The new building as you walk through from the chapel; the meeting room is framed by the stud wall which will have a folding door. When not sectioned off for meetings, it can be incorporated into the café area, seen in the foreground. The kitchen & serve-over will be in the bottom right hand corner. Eventually.



Ian, the site Foreman, skilfully driving the project forward on time, finally gets the front door fitted...and has to immediately lock it as the site closes down. He was crosser than he looks.

STOP PRESS

As the site closed down completely on 27th March until further notice following Government guidelines. All of the buildings are secure and watertight. The chapel is awaiting the underfloor heating pipes and concrete screed over, together with the double-glazing of the windows together with final-fix electrics and low level decoration. The new build awaits plastering, fitting out of the kitchen & toilets, heat pump installation, final-fix electrics and decoration. All of this was well on the way to being delivered within the last 7 weeks of the contract period. Disappointing but worth waiting for!



MR PYE OF PYE'S YARD AND MITFORD HOUSE IN STATION ROAD

I am a long term family history researcher and have recently begun looking into a DNA link between my wife's ancestors and those of the Pye family of Morpeth. Now Morpeth is a long way from Elmswell and there is certainly the world of difference between the two but Robert Stephen Pye made that journey sometime in the late 1870's. He'd have been in his early twenties but soon married and settled down with Georgiana Eliza Edwards who hailed from Bacton. Three children were sent up to Morpeth where they lived with their grandmother and Georgiana died in 1911 in Linton, Cambridgeshire. Robert was soon married again to Eliza Goode from Shelland with whom he had five children. Robert was a well-known timber merchant who lived at Mitford House and had a saw mill beside the railway station. He bred and raced greyhounds and was a champion middle distance runner. He actively supported the football club. Following his death in 1932 his children Ruby and Robert carried on the timber business until the mid-1980's.

The Elmswell History web site provides some excellent information about the family and the business but I would be very pleased to hear from anyone who can help me further piece together both the family and the business. I would particularly like to make contact with any surviving descendants of Robert – I've been very fortunate in contacting some from the Morpeth side of the family. I think that this will be a very interesting story and I promise that I will share it with readers of this newsletter when it has been pieced together.

David Kerr, david.b.kerr@btinternet.com

T.P. Services

UPV-c Window & Door Repairs

Sealed Units, Hinges, Locks, Handles, Letter Boxes

Over 30 years' experience, free quotations

Contact: Tom
Mob: 07957 098118
 Email: tpservices65@gmail.com

Computer Help

PC, Mac, Server or Tablet support in your office or home.
 A rapid response from a qualified IT professional.

- laptop and desktop repairs, speed up your system
- cyber security, cloud systems, network setup
- data recovery and virus removal
- improve wifi, smart TV, phone, tablet etc
- individual tuition

Gage Computer Services (01359) 245273
www.comphelp.co.uk steve@comphelp.co.uk

Est. 2003



GARDEN WARFARE LANDSCAPES

PATIOS - FENCING - SHED BASES - DECKING
DRIVEWAYS - MAINTENANCE - TURF & ARTIFICIAL GRASS

WWW.GARDENWARFARELANDSCAPES.CO.UK
INFO@GARDENWARFARELANDSCAPES.CO.UK
 01359 760005 - 07780 313330

DAVID MARTIN MOTOR VEHICLE ENGINEERS & CAR SALES

The Waste Place, Station Hill, Thurston, IP31 3QU
www.davidmartinmotorengineer.co.uk
In-fo@davidmartinmotorengineer.co.uk
 Open 8am-5pm Monday-Friday
 Tel: 01359 230536 Mob: 07808508864

Local, honest, friendly, reliable family run business offering car and light commercial vehicle repairs at competitive prices
 Proud to be members of the Good Garage Scheme, check our feedback @ www.goodgaragescheme.com
 NO WORK IS CARRIED OUT WITHOUT FULL CONSENT FROM THE CUSTOMER
 FREE local collection and delivery to your home or work place.

<ul style="list-style-type: none"> • Servicing on all makes & models (incl. vehicles still under main dealer warranty) • MOT tests & repairs • Break overhauls • Cam belts • Diagnostics • Bodywork • Tracking • Welding • Exhausts • Batteries • Vehicle recoveries <p>Courtesy car available (subject to availability)</p>	<p>Tyres supplied & fitted at very competitive prices (available same day if ordered before 12pm)</p> <p>Air con. re-gas from £50 plus VAT (R134A system only)</p>
<p>MOT & Service (including vehicles still under main dealer warranty) FROM</p> <p>£135 inc. VAT (Subject to Labour time and parts prices)</p>	<p>All MOTs</p> <p>£45 </p> <p>Class 4, 5 (minibus) & 7 (up to 3,500kg), incl. Free retest</p>

NEWS FROM ELMSWILD

We're not working...

In line with the latest government ruling our work parties are suspended until the coronavirus emergency is over. Normally we have a weekly work party every Tuesday morning to carry out essential work at Lukeswood, Kiln Meadow or the Memorial Garden. We will be trying to keep an eye on all three sites when we can to monitor for problems, but we won't be carrying out our normal schedule of work. The paths may get a bit overgrown during this time and you may notice some weeds in the flowerbeds at the Garden. Please bear with us during this difficult time, and be assured that as soon as we can we'll be back out there! The good news is that we managed to complete this year's tree planting before the shutters came down. New fruit trees are now in place in Norman's Orchard and mini orchards of five trees each have been planted at the library and the maze. Let's hope it won't be long before you see our orange hi-vis jackets buzzing around the village again!



...But they can't cancel Spring!

Days of bright sunshine have brought out all the signs of Spring that we so look forward to. Wildflowers are emerging at Lukeswood, including violets in a variety of shades, primroses and white deadnettle. The blackthorn is in blossom and buds are breaking on the trees. The silver birch trees are showing a soft smudge of green as the leaves begin to emerge. Chiffchaffs are shouting from every branch and birds are well into the nesting season. Early butterflies are on the wing – at Lukeswood you'll find both Peacock and Brimstone if the weather is sunny. It can be very restorative to get out and spend a little time in nature. At the time of writing, both Kiln Meadow and Lukeswood remain open and are ideal places to take advantage of the "one form of exercise per day" prescribed by our prime minister. If you do visit, please remember to keep yourself and others safe:

- Only visit with members of your own household and don't meet up with friends
- Keep a safe distance from other people
- Don't come if you or another member of your household is feeling unwell
- Don't leave litter and keep your dog on a lead.

We want to keep our two green spaces open and safe for everyone to enjoy, and you can help us with this by listening to the advice and acting on it. Things are moving very quickly and this situation may change in the coming weeks, so please listen out for new announcements.

If you're stuck inside and can't get out you can still enjoy the spring, even if it's just from your window. Try putting out some bird feeders and see what turns up!

Take care and stay safe

Better times are surely ahead. In the meantime take the opportunity to have a closer look at nature as it springs into life. Here are some ideas for activities that you can even do in your back garden along with a tree-themed crossword that you can do anywhere.

Arboricultural & Landscaping Solutions

- All Aspects of Tree Surgery
- Soft & Hard Landscaping
- Maintenance & Lawn Care
- Fencing
- Domestic & Commercial
- Fully Insured
- NPTC Qualified

For more information please visit:
www.greenscenetreesurgery.co.uk



GREEN SCENE

PLEASE CONTACT US TODAY FOR FREE QUOTATIONS & ADVICE

Phone: 01359 298141 Mobile: 07866 866 880

Email: greenscene@hotmail.co.uk

KEEVIL ROOFING

Qualified Roofing Specialist
 Over 10 Years Experience
 Free Quotations & Advice



Contact Will on 07912 663 713
keevilroofing@gmail.com



Safe and Secure Storage in Great Ashfield, Suffolk.

from as little as £20 per week!

Looking to de-clutter? Or moving house? Just need some extra space?
 Look no further for self-service storage for your personal belongings.

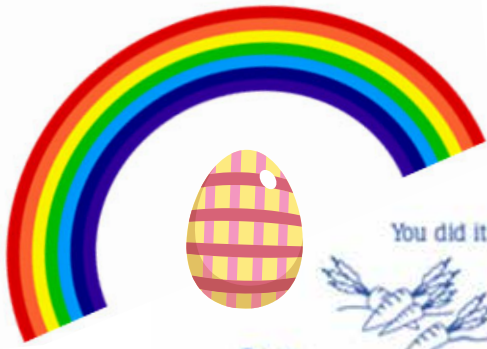
Think of your container as an extension of your home. Ashfield Storage is situated in Great Ashfield, 1 mile from Elmswell. Simply choose from the following two options:

Small (2.9m x 2.36m) - £20/week
 Medium (5.89m x 2.36m) - £30/week

- ✓ Ground Level Access
- ✓ Secure & Convenient Access
- ✓ Heavy Duty Locks Provided
- ✓ CCTV Coverage
- ✓ 24/7 Access

Contact Us Today 01359 244047 info@ashfieldstorage.co.uk

Lea Farm, Haugh Lane, Great Ashfield, Bury St Edmunds, IP31 3HL



You did it!



Can you help the bunny find the carrots?



Start Here!



Easter Nests!

You will need:

- 4 cups marshmallows
- 5 cups rice cereal
- 1/4 cup coconut oil (or butter)
- 2 teaspoons vanilla
- 2 cups mini eggs

Method

1. Grease a cupcake tin
2. Melt your marshmallows
3. Add in coconut oil and vanilla extract, mix well.
4. Mix in the rice crispies
5. Set in the fridge
6. Take the nests out of the tin, and then fill with your yummy mini eggs!

Colour
In



Rainbow Wands

You will need:

- A stick, straw, twig or lollipop stick
- Paper/ card
- Coloured ribbon / strips of tissue paper or fabric



This page sponsored by





RANDOM THOUGHTS FROM A (SELF) ISOLATIONIST

This is a situation I never thought I would have to do, and in my case it is going to be 12 weeks at least. I am by nature, inherited from my Mum, very gregarious so it won't come easy! What can I do to fill the time? My main interest is gardening and that will take up a lot of time. When I look around it seems most of the time I am the only one working in my garden. But I enjoy it, I get loads of fresh air and a nice lot of fresh vegetables and the odd flower or two and lots of satisfaction and, in the current crisis, also lots of exercise. I also paint. I thought I might do a bit of house painting instead of doing my usual feeble efforts on a bit of paper. I was so delighted when I discovered I didn't have any suitable paint for the jobs I was considering. I was so relieved! If you have nothing to do you could try painting and drawing. There is a massive advantage trying something like this – there's only those indoors with you to see what you have done. So no one can laugh at your attempts, apart from yourself and those you are isolating with. All you need is a bit of paper and a pencil and a bit of imagination. If you have a garden you could pop outside and draw a tree or flower or bird table or anything else you fancy. Try doing a face, just do an oval like an egg and fill in the details after, but remember the eyes are halfway between the top of the head and the chin. Try a simple rowboat. Draw a figure of eight laid on its side, slightly flattened and you have the basic shape of a boat. The things you can do are endless so give it a try, you

never know you could be a budding Picasso. If the results look awful who cares, if it gives you something to do and might just stop you from going stir crazy.

How about a jigsaw or a book even. I do a lot of reading, mainly historical stuff. Man is capable of such invention but never seems to learn from the past. I have to have an actual book in my hand, I like to be able to look back to check on things. My wife, due to her eye problems, uses a Kindle and since acquiring this wonder of technology has read about 75 books. The great advantage with this is that she finishes one book and can do a couple of clicks and hey bingo she has another to read. All this without getting up from the settee. If this is not a form of self isolation I don't know what is! We both read in bed before sleep and occasionally read out snippets which often leads to me buying the paperback version as well. It would be much easier if I bought a Kindle as well and cheaper. But I can't help it, I like books. A drawback with reading in bed is that if I happen to drop off mid sentence you can be assured the book will fall on the floor and cause words to be said. I know people who have never read a book in their lives. They have no idea what they are missing.

Last weekend my daughter who lives in Norway organised a family game of Animal, Mineral, Vegetable. This involved Mark in Iowa, USA, Keeley and Niv in Oslo, Lindsay and Ellie in Badwell Ash and me in Elmswell. Somehow we had split screens on our iPads so we could interact with much fun and a large dollop of leg pulling. Don't ask me how she set this up because me and technology are not best friends and please don't ask me who won 3 and came second on the other two games. Modesty forbids me from saying!

There's lots of things to do to kill the time, just don't kill each other.

Finally, a heartfelt word of thanks to all those working so hard in the NHS to get us over this crisis.

John Welford

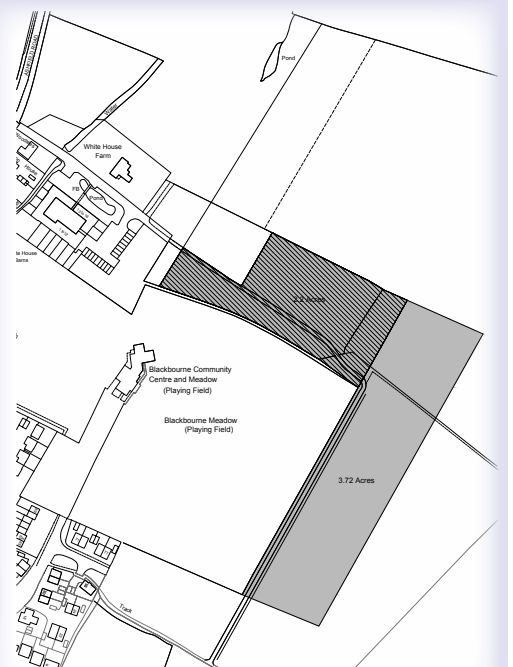


BIGGER & BETTER AT BLACKBOURNE

In December 1997, a Consultation Draft for residential, and community development at White House farm on Ashfield Road included the proposal for additional recreational land at Blackbourne.

After 23 years of due process the Parish Council has now been able to instruct solicitors in the matter. Some 6 acres of land along the northern an eastern edges of Blackbourne Meadow are to be conveyed to the community for a nominal consideration of £1.00. The acquisition has been anticipated and a budget is already set aside for any immediate costs such as fencing. The longer term plans will be debated by the BWMA and Councillors once the transfer is effected.

Watch this space!



07534 525 263
01449 258 254



STOWMARKET SKIP HIRE

Suppliers of
2, 4, 6 & 8 Yards Skips
1 Tonne Waste Bags
Hoggin, Topsoil & Hardcore

PROMPT & RELIABLE SERVICE

Weaver House
Finborough Road
Onehouse, Nr Stowmarket

Mobile: (07860) 692733

Professional & Reliable Service



Plumbing, Bathrooms, Heating, Boilers, Servicing,
Underfloor Heating, Tiling, New builds & Renovations

gidneyph@outlook.com www.plumbinginsuffolk.com

Diagnostic Testing



- Car & Light Commercial Service & Repair Specialist
- General Servicing, Maintenance and Repairs on All Makes and Models
 - MOT Preparation and Repairs
- Recovery, Collection and Delivery Service

FOR A PERSONAL SERVICE AT A
COMPETITIVE RATE PLEASE CALL ON

Tel: 01359 245 998
Mob: 0780 5604793

Unit 3

The Old Coach Yard - Grove Lane Ind. Est.
Elmswell IP30 9HN

NO VAT!

ALL MAJOR CREDIT CARDS ACCEPTED
Appointment Not Always Required
• CAMBELT • HEAD GASKETS

BJW PLUMBING & HEATING YOUR RELIABLE LOCAL PLUMBER

- Boiler Servicing
- Central Heating Installation
- Maintenance & Repairs
- Bathroom Suites, Showers, Tiling
- Install Washing Machines/Dishwashers
- Burst/Leaking Pipes
- Water Softeners
- General Plumbing Needs



200169

GAS Safe registered 200169

BARRY WARD: 01449 616034/07734 872549

Not just a pet food shop...

We also have a large stock of
pet sundries, wild bird foods,
poultry feeds and coldwater
and tropical fish sundries.

We also stock horse grooming equipment,
frozen reptile foods, salt tablets for your
water softeners and dishwashers...
and much more.

Come and
see our
range of
products
today!



Mon -Fri: 9-5

Sat: 9-2

01359 242942

Station Road, Elmswell IP309HD (behind the pharmacy)

www.tcllandscapes.co.uk



The Country Life
Landscapes



The Country Life Landscapes is a
family run business. Locally based we are
here to make your surrounding landscape
is a pleasure to be in. All aspects of
garden design and construction carried out
to your complete satisfaction with on site
free quotations given.

Our maintenance team will carry out all
work in your garden, from grass cutting
large/small areas to complete overall care
of your outside space including pruning,
hedge cutting, tree work, weeding, planting,
green waste disposal, etc. Please feel free
to contact us to discuss your requirements
at any time.

Tel: 01359 240094
email: enquiries@tcllandscapes.co.uk



Be honest now, did anyone see that coming?

No, I thought not. Couple of months ago we were fretting about having no League Secretary and now we have no League! Little wonder that it is called off really, as most bowlers are somewhat mature to put it politely and rather over-ripe to be more truthful, and so predominately of the vulnerable category in these dangerous times. We really can't afford to lose more than a few each year because recruitment is slow and commonly from the same generation as those already playing.

I was all geared up to tell you about our official opening on Sunday, 19th April and our first friendly against the very like-minded Coney Weston Swans. Must be something about pub teams that makes them take very similar approaches to all things bowls related or, possibly the shared fondness for alcohol, who knows?

Anyway, the cruellest aspect of this clamp-down, however justified and understandable, is that we will have to maintain the green pretty much as if we really were playing. True, we will not have to cut it so frequently and sometimes possibly only once per week instead of two or three times, but everything else, spiking and scarifying will continue just the same. How frustrating do you think that will be? Working on the green always makes me want to bet a set of woods and see what effect our maintenance has. Moreover, we can only do it in pairs to stay within the Government's (current) guidelines. Looking on the bright side, and I am determined to find one, this may fade before summer ends and we might, possibly,

return to something nearer to normality but so little is known as yet that there is no guarantee of anything at the moment. 'Normal' might have a very definition a year from now. Well, so much for my 'bright side'!

Quite what I am going to find to write about through the summer I really have no idea just now.

Photographs will have to be recycled, I imagine, and I had such plans for the season, too.

This month's offerings are from recent work parties which will now become work pairs, I suppose. The selection show David Grunbaum clearing debris ahead of the mower and Dick and Peter Williams doing the actual cutting. Both were taken with a mobile phone, which are easily carried and remarkably good these days, but don't allow for any adjustments at all.



Anyway, dear and faithful readers, both of you, do keep yourselves safe and try to keep smiling and remember, this will end sooner or later, that I can guarantee.

**Peter Edmonds,
E.F.B.C. t.07860 395720**



Looking for the perfect home?



Whoever you are, wherever you're looking to move; we'll be on hand every step of the way. We'll even give you your own **FREE personalised property website** to tweet to family and friends!

T. 01359 234444 | W. allhomes.uk.com | E. mail@allhomes.uk.com

ELMSWELL PARISH COUNCIL April Report

Full Council is scheduled to meet on the 3rd Monday monthly, excepting August, unless the timetable for responding to consultations on Planning applications requires an extraordinary meeting. The Ordinary March meeting took place on the 16th at Blackbourne with 9 councillors present together with 1 member of the public and, for part of the meeting, Mid Suffolk Ward Member Helen Geake and SCC Ward Member Cllr Jane Storey.

This report is compiled from that meeting by the Parish Clerk and edited by the Council's Editorial Board which comprises the Council Chairman, Cllr Fred Pallett, the Council Vice-chairman, Cllr David Barker, and Cllr Mike Friend, nominated by his peers to join them. It seeks to cover some of the more interesting or significant items thought to deserve wider public attention. Included, where appropriate, are matters reported to the meetings by external bodies such as Ward Members or as raised at the meeting by members of the public. Further background and reference to subsequent events are included where relevant.

The Minutes of recent Parish Council meetings and Committee meetings, together with the agenda for the next meeting, when published, are available on line at elmswell.suffolk.cloud and from the Parish Clerk by arrangement. Bound copies of older Minutes are lodged with the Suffolk County Records Office in Bury St. Edmunds. The most recent Minutes, from the meeting on 17th February and from an Extraordinary Meeting on 2nd March, as approved at this meeting, are posted in the community notice board at the Co-op.

Planning result

The Meeting noted the result of a Planning Applications, as determined by Mid Suffolk District Council reference DC/20/2005, being the discharge of conditions relating to materials under Permission 4911/16 on land adjacent to Wetherden Road where 240 houses are currently under development by Crest Nicholson.

Planning Applications

The Meeting discussed submissions as forwarded for comment by Mid

Suffolk District Council, the Planning Authority, and agreed to support the following:

DC/20/00901

Erection of single-storey rear extension and addition of cladding to rear elevation; insertion of 1 No. window to side elevation and installation of roof lantern to rear extension; insertion of windows and door to front elevation in lieu of existing at 32 Miller Close

DC/20/00931

Erection of single-storey rear extension at 5 Gardeners Walk

DC/20/00717

Erection of 2 No first floor and single storey side extensions; replacement of cladding at 22 Pightle Close

The following applications were recommended for Refusal for the reasons as detailed:

DC/19/05878

Outline with access considered and all other matters reserved re erection of 1 No dwelling (following demolition of buildings) [Re-consultation with revised Planning Statement] on Land north of Dagwood Farm, Ashfield Road Councillors objected to this application for the following reasons:

The Settlement Boundary, as defined in the Local Plan, now has behind it the empowering factor of an accepted 5 year housing land supply. The site is in the countryside outside of the Settlement Boundary within which new development will properly take place. Further, the site is not identified in the emerging joint Local Plan as suitable for development. With regard to the strong policy imperatives aimed at protecting the existing character and appearance of the countryside, this proposal offers no justification for exceptional treatment and does not present a case for special consideration under categories identified and defined in the Local Plan, the Core Strategy or the National Planning Policy Framework. The current burden of development with extant Permission amounts to a 37% uplift in housing stock imposed on a community already suffering from poor infrastructure provision, in particular regarding education and highways. There is no need for the extra dwelling proposed.

Furthermore, the emerging Joint Local Plan has it, at LP24, that development should 'Respond and safeguard the existing character and context', and that, 'Development that fails to improve the quality and character of the area will not be supported.' This ad hoc, opportunistic off-Plan proposal clearly fails on both of these counts. If granted, it would breach the current building line boundary presented by the existing farm track and represents an incursion into an adjacent holding which would make further creep of development difficult to resist. In reaching these conclusions, Councillors had reference to Local Plan policies SB1 & H7, Core Strategy Policies CS1 & CS2, National Planning Policy Framework para.55 and to the emerging BMSDC Joint Local Plan.

DC/20/00779

User of land for the storage and distribution of containers including lighting, hard surfacing and Landscaping at Goldstar Transport, Elmswell Road, Woolpit

Councillors objected to this application for the following reasons:

- 1 The noise nuisance suffered by Woolpit residents from the existing operations on this site extends, to a lesser but significant extent, to Elmswell. It is clearly the case that the proposal for a 25% uplift in capacity would commensurately increase this nuisance to the further detriment of the peaceful enjoyment of households in both villages.
- 2 A significant factor in the Inspector's Refusal decision at Appeal in 2013 was the constant and inevitable noise nuisance. Nothing in this Application mitigates the factors which led to that decision.
- 3 Suggestions as to specific orientation and arrangement of containers so as to create a notional barrier against noise from the operations on the site point up the Applicant's awareness of the obvious and overriding problem of consequential nuisance. Any such operational constraints would be difficult to monitor and impossible to enforce effectively.
- 4 The level of noise per operation will not vary. What this Proposal portends is a 25% increase in the frequency of these operations with no control determining timing or frequency other than the market demands of Felixstowe Container Port et

al. The nuisance is beyond the control of the applicant.

- 5 The Permissions granted since this scheme was first promulgated mean that some 300 new households and a primary school are included in the noise catchment. This, clearly, compounds the historic nuisance and puts beyond reasonable doubt the acceptability of this proposal.
- 6 There has to be a 25% increase in traffic to service the extra capacity sought here. These extra vehicles must all access the roundabout adjacent to A14 and inevitably worsen the hazard at this extremely busy junction.

In reaching these conclusions, Councillors had reference to Local Plan Policies E9, E10, E12, T10, Core Strategy Focussed Review para FC1, to NPPF areas 130, 170e, 180a & to emerging JLP Policy LP16 (2).

Mid Suffolk District Council

Cllrs Sarah Mansel and Helen Geake tabled a joint written report confirming that the District Council budget was discussed and agreed at the full Council meeting on 27th Feb. The administration proposed a 1.66% increase in Council Tax (5p per week on a Band D property). The Government funding proposals for district councils were announced at the beginning of February, and MSDC are expecting to receive just over £4M made up of base funding, new homes bonus and rural services delivery grant. Total net expenditure of the Council is in the region of £10M so a further £6M odd is needed via Council Tax. The Council still has over £9M in reserves, some of which is to be used in specific projects, including another round of Member Locality Budgets and £500k for projects suggested by the Climate Change Task Group and an art trail in Stowmarket.

The Council's Housing Revenue Account is separate to the General Fund. The Government are now allowing rents to increase by CPI +1% so this is what is proposed. This equates to a rent increase of 2.7% (average £2.19 a week). The Debt Cap has now been removed so Councils are now able to borrow funds for Housing without worrying about breaching the cap.

MSDC have gone into partnership with Icen Homes to deliver a number of affordable housing development over the next few years. There is a commitment to retain RTB receipts and to increase borrowing moderately to fund such developments.

Meanwhile, the Green and Lib Dem groups have been working together on an alternative budget since November. Some of the ideas put forward were incorporated into the administration's budget, but those concerned still didn't feel enough was being done to future proof Mid Suffolk. They proposed that MSDC should build some zero-carbon homes, and promote more EV charging points in our towns, encourage more residents to spend time in Stowmarket and increase resources for additional highways expertise in planning, but the proposals fell.

As Ward Members they have now spent their allocated locality grants across both the villages which they represent. There will be another round of locality grants in next year's budget. The following was awarded to Elmswell groups:

Elmswild Flowers	£500
Companions	£1200
Friends of St Johns Church	£600
Elmswell Library Friends	£682
Wesley Project	£4023

Wesley

The Clerk included, in his Report to the Meeting, an update on the position at the Wesley project site on School Road where work continues without serious impediment other than the discovery of a second underground void, assumed to be a well, in the area of the rear car park. This will not create any serious on-cost and the contract remains in budget. Meanwhile, suggestions regarding improving the external surfacing to avoid the use of gravel are being costed for consideration. The final floor screed is down throughout, which will allow detailed specification of the kitchen and other areas.

Greene King site

The Clerk's Report included confirmation that Contracts for the purchase of the Greene King site on School Road were exchanged on 3rd March with Completion enacted

on 13th. As previously confirmed, the transaction is for the business as a going concern, by virtue of which, given that Council is now Registered for VAT and undertook to make an Option to Tax, VAT was not levied on the sale or on the SDLT (Stamp Duty). The saving this represents is some £220,000. The VAT registration in no way alters the way VAT is dealt with in the normal course of Council activity and will currently only be relevant to the business activity of renting the pub premises to the tenant. The Chairman and Clerk have met with the tenant to confirm no interruption is proposed or is likely to affect the day-to-day running of his business and that there is no change to his current Agreement other than the name of the landlord. He has agreed to a suggestion that the remediation of the larger site by way of removing the scrub overgrowth and accumulated rubbish, together with the killing off and eventual removal of the ivy which has taken over the front of the premises, would be beneficial. It was agreed that these works might stand Council in good stead towards assessing next appropriate steps given that the boundaries would be more clearly defined, some extra parking afforded to serve both the pub and Wesley, and the building would not be at further risk from the potentially damaging ivy growth.

Elmswell Community Land Trust

The Clerk reported that the agreement of Ann Richards, Ben Whatling and Linda Waspe from the village has been secured to join him and Cllrs, Mansell, Pallett & Shaw as the necessary steering group towards the establishment of the Elmswell Community Land Trust. It will now be possible to move to the next phase which is to encourage and establish wide community membership as previously agreed.

Extension to the Chamberlayne Hall at Blackbourne The Meeting noted that Council's appointed architect has received 3 quotations for the works to extend the Chamberlayne Hall at Blackbourne designed to afford more storage, office space, and a dedicated room for a village archive. A meeting with the preferred contractor is to be arranged to confirm a final figure and ancillary detail for presentation to Council towards approval for the works.

Next Meeting

The next Ordinary Meeting is scheduled to take place on Monday 20th April at 7.30pm in the Chamberlayne Hall at Blackbourne. The public are, as ever, welcome to attend all Council and Council Committee meetings and the agenda will always offer opportunities for questions and comment. Agendas are published on line at www.elmswell.suffolk.cloud, on the Council's notice board at Crown Mill and in the community notice board at the Co-op outside the Post Office.

Enquiries on any Parish Council matter are invited to the Clerk, Peter Dow, at The Council Office, Blackbourne, Blackbourne Road, IP30 9UH – right next to the car park and with wheelchair access.

Staffed Mondays & Wednesdays 9.00am – 4pm,

Tuesday & Thursday 9.00am – 12 noon and at other times by arrangement.

clerk@elmswell.suffolk.gov.uk Tel. 244134



Parish Council coping with coronavirus

The Council office is functioning as normal by a combination of working from home and careful observation of recommended personal distancing at Blackbourne as necessary.

The phone on 244134 will normally be answered during the day and the answerphone is monitored regularly.

Regardless of the several options now available for seeking help through established and new volunteer channels, the Council will always try to deal with specific queries on any matter by telephone or email at clerk@elmswell.suffolk.gov.uk.

Council has helped wherever possible towards the volunteer efforts which are being made towards addressing social issues in the village and will continue to do so.

Blackbourne is closed until further notice, as are the play areas there and at Crown Mill. The car park gate is locked whenever an arranged access requirement is not due – eg the bin lorry.

Blackbourne was registered in 2017 as a 'Rest Centre' for emergency use, eg local field hospital. It is annually inspected, the available facilities are monitored and Council has formally agreed under a Memorandum of Understanding that it stands ready for use as and when needed.

Currently the grass continues to be cut by SCC augmented by Dick Burch as a volunteer carrying out cutting and general maintenance using the Council's tractor and kit. Other grass areas are maintained as per contract.

The bowls green is immaculately prepared for a postponed season, all the result of the Bowls Club volunteers working as advised in groups of 2 only.

Neither the caretaker nor the village warden are at work until further notice. All their essential roles are otherwise covered.

Advice from Government and from various bodies such as the Suffolk Association of local Councils, Community Action Suffolk, Suffolk County Council and Babergh Mid Suffolk District Councils is being closely monitored and followed.

It seems unlikely at the moment that the scheduled meeting on 20th April will go ahead and we await Government legislation regarding the May meeting which, as the Annual Council Meeting, is a statutory requirement.

Again as advised, the business of Council continues with certain actions delegated to Clerk & Chairmen to be ratified at a later date.

We remain suitably calm and, for the moment, are, appropriately, carrying on!

Peter Dow - Clerk to the Council

Future Council Meetings

Notice of all meetings and agendas is posted on the Council's notice board at Crown Mill and in the community notice board at the Co-op.

Apr 20th May 18th June 25th July 20th Sept 21st

Meetings are held at Blackbourne, beginning at 7.30 unless otherwise notified

elmswell.suffolk.cloud ...

...gives access to Parish Council agendas, Minutes and documents relating to the Council's finance and governance.



POTHOLES A PROBLEM? STREETLIGHT OUT?

These are Suffolk County Council responsibilities. The only way to report them is on the SCC on-line reporting tools. The more people reporting, the more pressure there is on the Council to act. Search; **Suffolk County Council Highways Reporting Tool** or **Suffolk County Council Street Light Out**

What's On in Elmswell ?



Clearly, with a lockdown across the board, these events will be cancelled until further notice -
but we leave them listed so that, whenever we get the OK to start up again, we're ready to go!
(And as a reminder that we will be back to normal, hopefully in the not too distant future.)

April 2020

- 1 Elmswell Exchange WI - An Afternoon with The Dance Comp: Any Dance related item
- 2 Over 55's Club "Bryan of Note" entertains Visitors welcome
- 3 "Companions" meet at The Wesley Hall 10.15am - 12 noon
- 9 Food n Friends at Elmswell Baptist Church midday
- 9 Elmswell History Group's 20th Anniversary meeting, Chamberlayne Hall, The Blackbourne - 7.30pm. Speaker Claire Gapper: "Decorative Plasterwork in Elizabethan & Jacobean Suffolk"
- 14 Elmswell WI at The Blackbourne at 7.30pm David McDonnell, Romans in Suffolk
- 16 Over 55's Club Bingo
- 17 "Companions" meet at The Wesley Hall 10.15am - 12 noon
- 19 10:30am - Messy Church at St John's Church Elmswell
- 21 Elmswell Gardening Club meet at The Blackbourne 7.30pm. Speaker: Jim Paine from Walnut Tree Garden Nursery - 'The Secret Life of Plants'
- 21 Elmswell Exchange Social Club Speaker Mr. Leader Portugal + Raffle
- 24 BINGO at Blackbourne Doors open 6.45...Eyes Down 7.30
- 30 Over 55's Club Sing along with Hank Open evening

May 2020

- 1 "Companions" meet at The Wesley Hall 10.15am - 12 noon
- 6 Elmswell Exchange WI - AGM and Resolutions Meeting Comp: A landscape photograph
- 12 Elmswell WI at The Blackbourne at 7.30pm Annual General Meeting
- 14 Elmswell History Group meeting, Chamberlayne Hall, The Blackbourne - 7.30pm. Speaker Jacquie Norman: "Tudor Costume in the time of Henry VIII" *July tickets on sale*
- 14 Over 55's Club Outing
- 15 "Companions" meet at The Wesley Hall 10.15am - 12 noon
- 17 7:00pm - Songs of Praise - Cambodia theme - at St John's Church Elmswell
- 19 Elmswell Exchange Social Club Outing
- 19 Elmswell Gardening Club meet at The Blackbourne 7.30pm Speaker: Chris Dale - 'Sweet Peas'

- 28 Over 55's Club
- 29 BINGO at Blackbourne Doors open 6.45...Eyes Down 7.30
- 29 "Companions" meet at The Wesley Hall 10.15am - 12 noon

June 2020

- 3 Elmswell Exchange WI - Edith Cavell - A British Heroine - Richard Mann Comp: Any memorabilia from World War 1
- 6 7:00pm - Quiz Night at St John's Church Elmswell
- 9 Elmswell WI at The Blackbourne at 7.30pm Judith Muncila, A look at the lighter side of life
- 11 Elmswell History Group meeting, Chamberlayne Hall, The Blackbourne - 7pm A.G.M., the Speaker Anthony Cobbold: "The Cobbold Family" *July tickets on sale*
- 11 Over 55's Club Bingo
- 12 "Companions" meet at The Wesley Hall 10.15am - 12 noon
- 16 Elmswell Gardening Club meet at The Blackbourne 7.30pm Speaker: Dr Ian Bedford - 'The trouble without wasps'
- 16 Elmswell Exchange Social Club Talk Our Special Friends + Raffle
- 25 Over 55's Club Music with "Times Past" open evening
- 26 "Companions" meet at The Wesley Hall 10.15am - 12 noon
- 26 BINGO at Blackbourne Doors open 6.45...Eyes Down 7.30
- 28 12:30pm - St John's Church BBQ at the Rectory

July 2020

- 1 Elmswell Exchange WI - The Work of a Parish Nurse - Lesley Williams Comp: A single flower in a container of your choice
- 9 Over 55's Club Strawberry Supper
- 9 Elmswell History Group - 6.45pm. Annual Outing - Bury Cathedral Details and Tickets from 01359-242601
- 10 "Companions" meet at The Wesley Hall 10.15am - 12 noon
- 14 Elmswell WI at The Blackbourne at 7.30pm Summer outing
- 21 Elmswell Exchange Social Club A.G.M. + Strawberry Tea

- 21 Elmswell Gardening Club Summer Outing to Helmingham Hall. Coach will leave the Blackbourne car park at 1.00pm
- 23 Over 55's Club Bury Male Voice Choir in Jubilee Hall Visitors welcome
- 24 "Companions" meet at The Wesley Hall 10.15am - 12 noon
- 31 BINGO at Blackbourne Doors open 6.45...Eyes Down 7.30

August 2020

- 2 2:30pm - St John's Summer walk (meet at Rectory)
- 5 Elmswell Exchange WI - Members Meeting - Create a Bookmark with Jayne Comp: The best three on the day
- 6 Over 55's Club Outing
- 7 "Companions" meet at The Wesley Hall 10.15am - 12 noon
- 11 Elmswell WI at The Blackbourne at 7.30pm Social evening
- 18 Elmswell Exchange Social Club Corncraft
- 21 "Companions" meet at The Wesley Hall 10.15am - 12 noon
- 28 BINGO at Blackbourne Doors open 6.45...Eyes Down 7.30
- 31 Over 55's Club Holiday

September 2020

- 1 Over 55's Club No Meeting
- 2 Elmswell Exchange WI - Making the Best of a Supermarket Bunch - Stephanie Lester Comp: A small arrangement with 3 flowers & greenery. 4 "Companions" meet at The Wesley Hall 10.15am - 12 noon
- 4 7:30pm - Nutz and Boltz concert at St John's Church Elmswell
- 7 7.45pm Ladies Friendship Group at Elmswell Baptist Church. An armchair walk of Ipswich waterfront by Ipswich TI.
- 8 Elmswell WI at The Blackbourne at 7.30pm Jane Marshall, craft evening
- 15 Elmswell Gardening Club meet at The Blackbourne 7.30pm. Speaker: Chris Bell - 'Weather Forecasting'
- 15 Elmswell Exchange Social Club Outing
- 25 BINGO at Blackbourne Doors open 6.45...Eyes Down 7.30
- 26 Elmswell Baby and Toddler Nearly New Sale

Your Newsletter Fact File

For the next 6 months we need copy by: April 21st, May 26th, June 23rd, July 28th, August 25th, September 22nd

Contact us on **01359 244 134** for all Amenities Association business, Newsletter and adverts.

Our new email address is **EAA@elmswell.org.uk** Your editors: Jean Barker, Maggie Bushell, Peter Dow

Published on the first Friday of every month by the Elmswell Amenities Association

Reg. Charity No. 304879. 1,906 copies delivered free to households and to businesses in the community. A volunteer enterprise entirely supported by advertising.

PLEASE SUPPORT OUR ADVERTISERS



A VILLAGE INDEX



Useful contacts for community groups & others...feedback is essential.

Do be in touch to correct or add details or to suggest someone else deserving of listing.

Amenities Association	Jean Barker (Sec)	eea@elmswell.org.uk	241135
Art Club	John Welford	welford955@btinternet.com	240166
Baby & Toddler Group	Donna Hughes	elmswellbtgroup@gmail.com	
Baptists	Dave Hollings	davehollings@btinternet.com	241323
Beavers	Ruth Court	ruthcourt4@hotmail.co.uk	
BWMA	Peter Edmonds (Sec)	edmondspeterj@gmail.com	241640
BATS – Badminton at Blackbourne	Peter Edmonds	edmondspeterj@gmail.com	241640
Blackbourne	Parish Council office	clerk@elmswell.suffolk.gov.uk	244134
Brownies	Gemma Sutton	elmswellbrownies@hotmail.com	
CAB		advice@midsuffolkcab.org.uk	01449 676060
Carpet Bowls Club	Frank Boxall	jf.boxall@btinternet.com	
Christians Together in Elmswell	Jean Folkard	derekrf2@gmail.com	
Community Speed Watch	Marie Spampanato	mariespampanato@hotmail.co.uk	07769 715209
Companions	Linda Waspe	linda@labbott.plus.com	
County Councillor	Cllr Jane Storey	Jane.Storey@suffolk.gov.uk	240555
Cricket Club	Eileen Brooks (Sec.)	elmswellcricketclub@gmail.com	
Cubs	Ben Savill	hovells23@hotmail.co.uk	
District Councillor	Sarah Mansell	Sarah.Mansel@midsuffolk.gov.uk	07860 829517
District Councillor	Helen Geake	Helen.geake@midsuffolk.gov.uk	
Elmswheelians	Trevor Sadler	trevor.sadler@dsl.pipex.com	240908
Elmswild	Mary Feeney	info@elmswild.org.uk	241901
Exchange afternoon WI	Maureen Davis	modavis6@gmail.com	
Exchange Club	Carol Blissett	carolblissett@hotmail.co.uk	
Fire Crew; non-emergencies	Brian Hawes	brian.hawes@suffolk.gov.uk	07761 125093
First Responders	Merv	merv.smith@tiscali.co.uk	07909 006 496
Football	Shaun Pratt	shaun.pratt@btinternet.com	07494 864 231
Fox Bowls Team bowls at Blackbourne	Dick Burch	ann.richards47@gmail.com	240105
Friends of St Johns	Jean Folkard	derekrf2@gmail.com	242099
Gardening Club	Nick Chamberlin	npch@btinternet.com	242601
Guides	Sue Howard	sueguides2011@talktalk.net	
Health Centre - Woolpit			240298
History Group	Stella Chamberlin	stellachamberlin@yahoo.co.uk	
Library	Miles Row - Manager	Elmswell.Library@suffolklibraries.co.uk	240974
Little Elms	Melanie Garner	info@littleelms.co.uk	240491
Newsletter	Editorial office	eea@elmswell.org.uk	244134
Oil buying Group		elmswelloil@gmail.com	07813829008
Over 55's Club	Diann Armstrong	Mayfield, Wetherden Road	241002
Parish Council	Parish Clerk	clerk@elmswell.suffolk.gov.uk	244134
Police Emergencies			999
Police; non-emergencies	Mid Suffolk South SNT	headquarters@suffolk.pnn.police.uk	101
Poor's Land Charity	Peter Goodridge	elmswellrector@gmail.com	240512
Power cuts		Powwercut105.com	105
School	Mrs Ash	admin@elmswell.suffolk.sch.uk	240261
Scouts	Paula Hollings	ddc.paula@stowmarketscouts.org.uk	07828 562485
St John's Church	Peter Goodridge	elmswellrector@gmail.com	240512
Sewing Bee	Isabel Burgess	isabel.burgess@live.com	
Village Tree Warden	John Ibbetson	jaye130@gmail.com	241086
WI - evening	Margaret Stevens	stevensmarg@tiscali.co.uk	408452
Youth Football	Chris Smyth	smyth98@hotmail.com	07717 841 591

Enquiries on any Parish Council matter are invited to the Clerk, Peter Dow, at The Council Office, Blackbourne, Blackbourne Road, IP30 9UH – right next to the car park and with wheelchair access. Staffed Mondays & Wednesdays 9.00am – 4pm, Tuesday & Thursday 9.00am – 12 noon and at other times by arrangement. clerk@elmswell.suffolk.gov.uk Tel. 244134

**IF YOU ARE NOT HAPPY THAT YOUR DETAILS APPEAR HERE,
PLEASE DO BE IN TOUCH VIA eea @elmswell.org.uk**

BULBS - ALTERNATORS - SHOCK ABSORBERS - COIL SPRINGS - WHEEL ALIGNMENT - REPAIRS - MOT PREP - WHEEL BALANCING - PUNCTURE REPAIRS



GUARANTEED BY THE
RETAIL MOTOR INDUSTRY



GUARANTEED BY THE
RETAIL MOTOR INDUSTRY

PROMECH



We cater for **ALL** your vehicles needs

MOT CENTRE



SERVICING

TYRES



TRACKING

BRAKES



EXHAUSTS

CLUTCHES



SUSPENSION

BATTERIES



DIAGNOSTICS

01359 242420

Find us at: Station Road Industrial Estate, Elmswell, IP30 9HR



KEY BATTERY REPLACEMENT - STARTER MOTORS - SPARK PLUGS - ELECTRICAL FAULTS - AIR BAG FAULTS - ENGINE MANAGEMENT LIGHTS - TPMS RESET